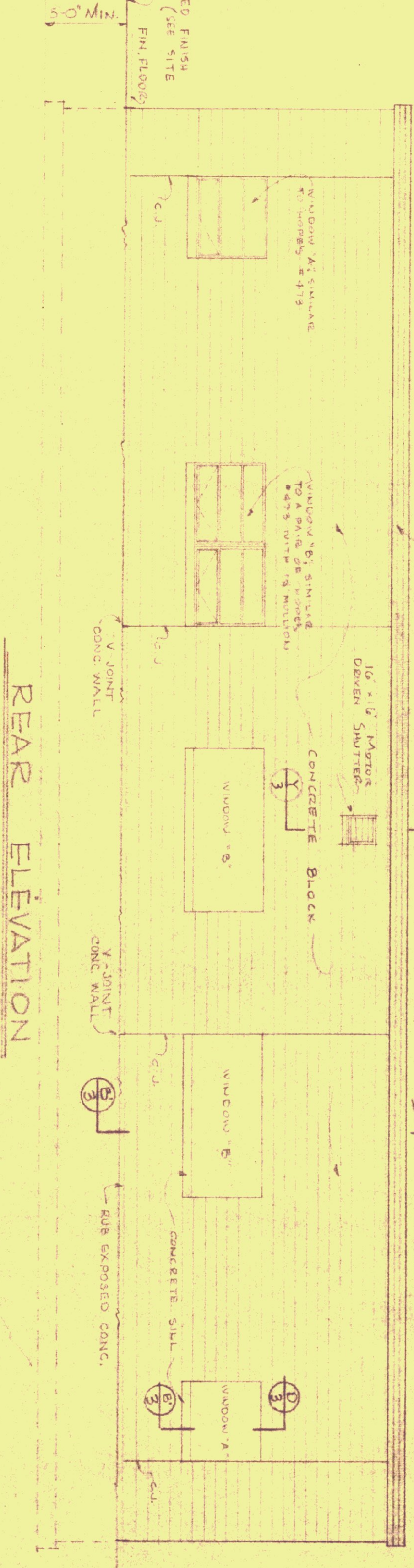
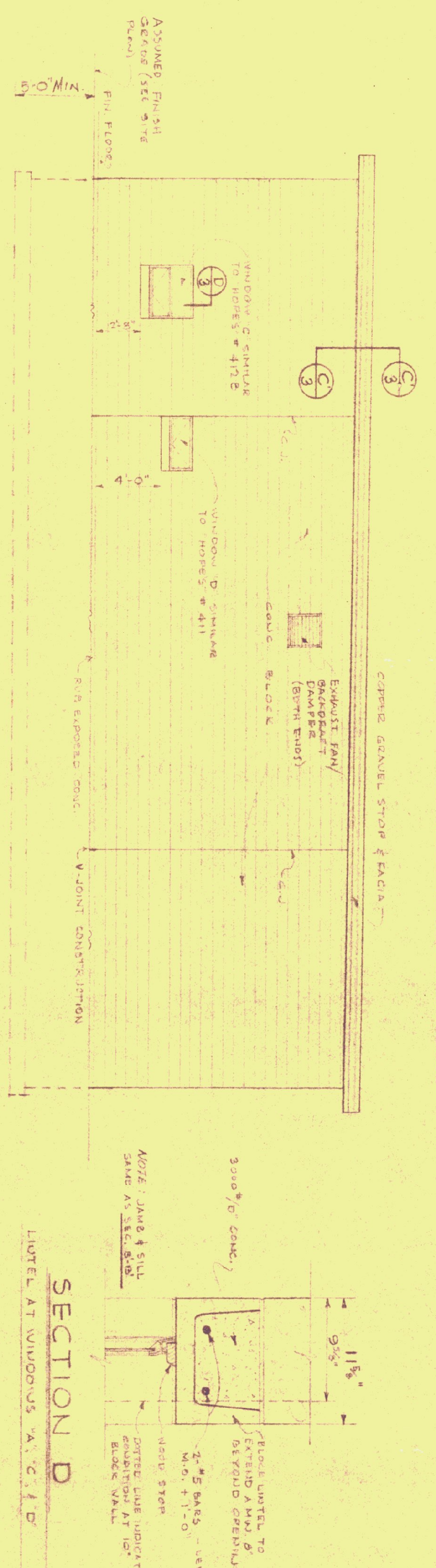


FRONT ELEVATION
SCALE 3/8" = 1'-0"

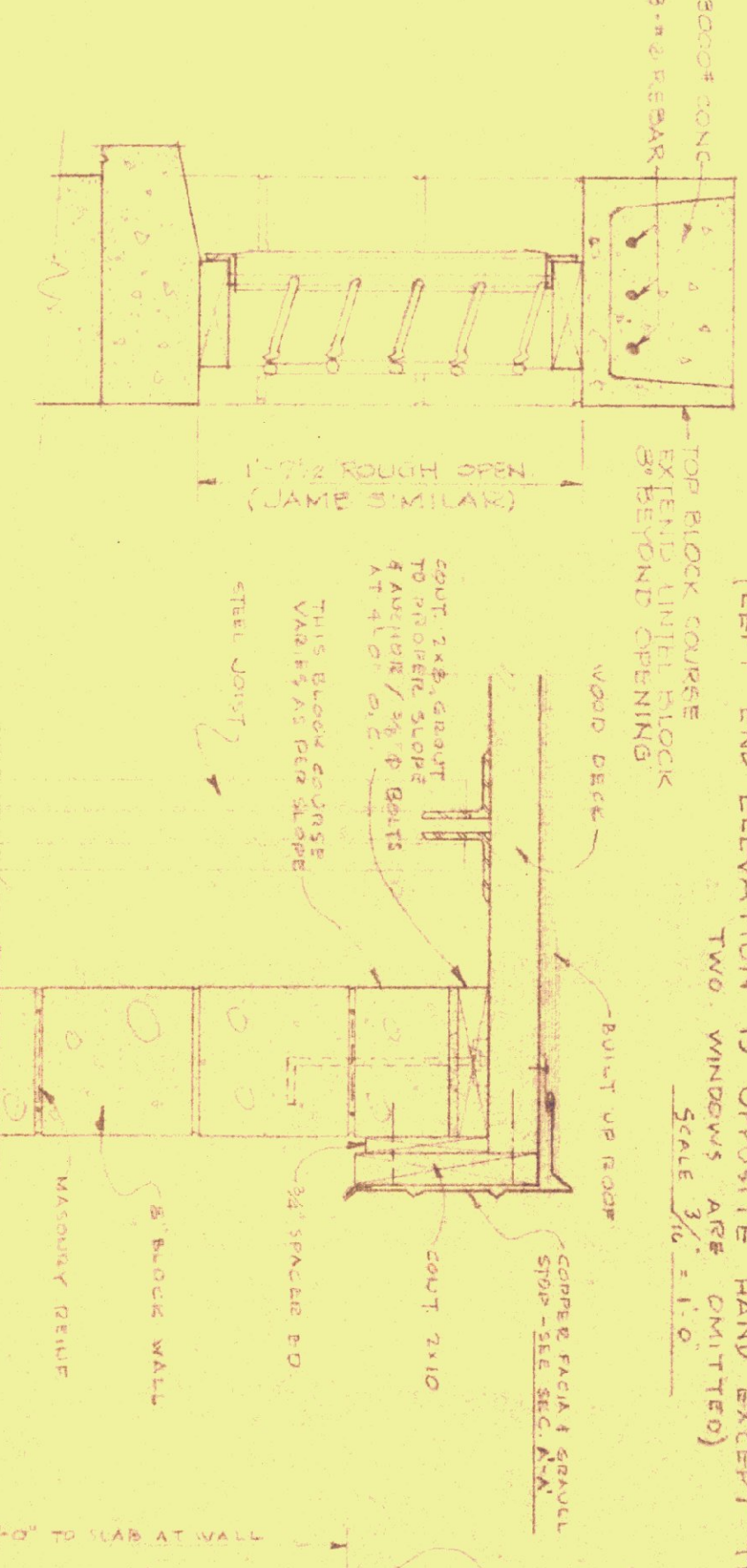


REAR ELEVATION
SCALE 3/8" = 1'-0"



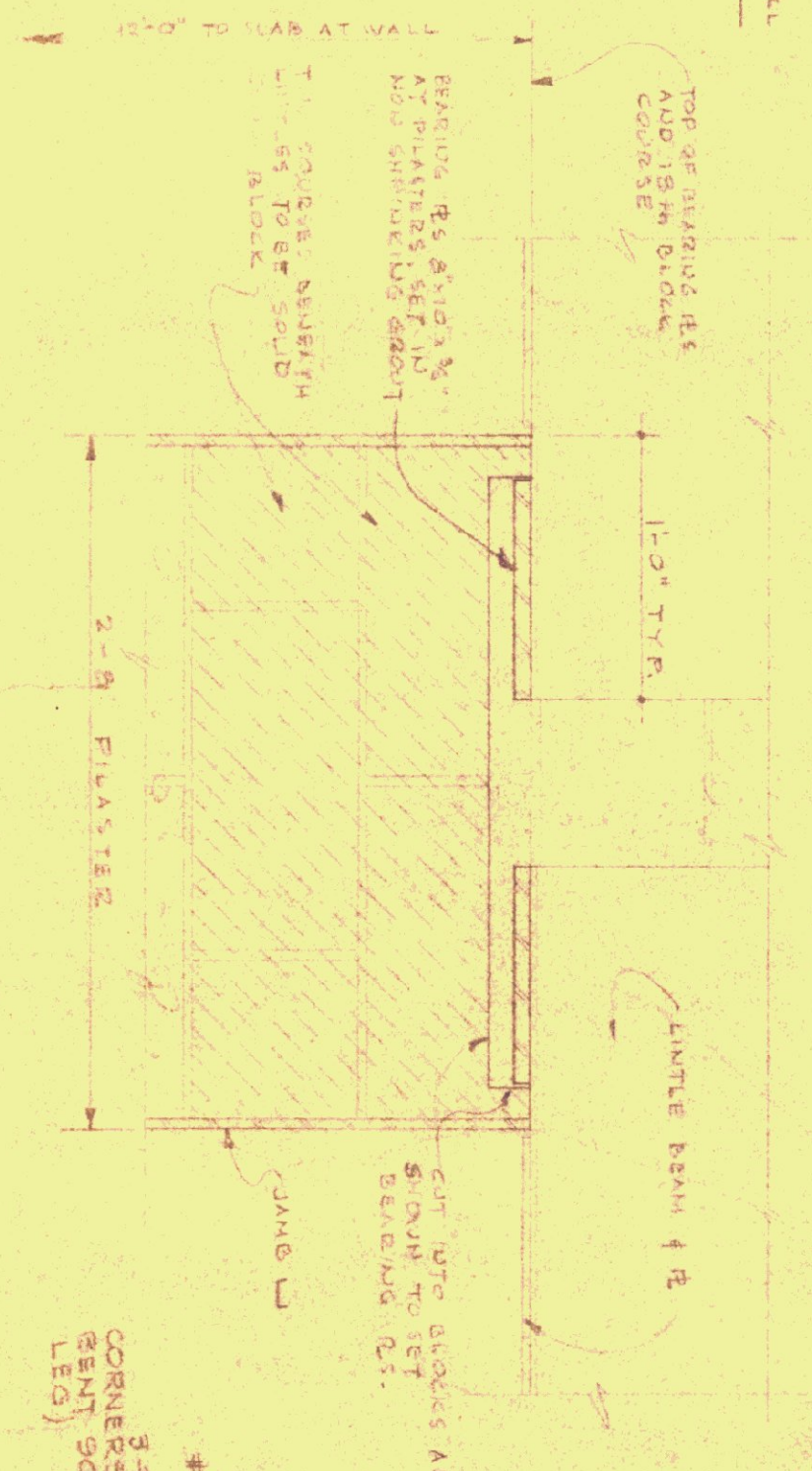
RIGHT END ELEVATION
SCALE 3/8" = 1'-0"

(LEFT END ELEVATION IS OPPOSITE HAND EXCEPT THAT THE TWO WINDOWS ARE OMITTED)

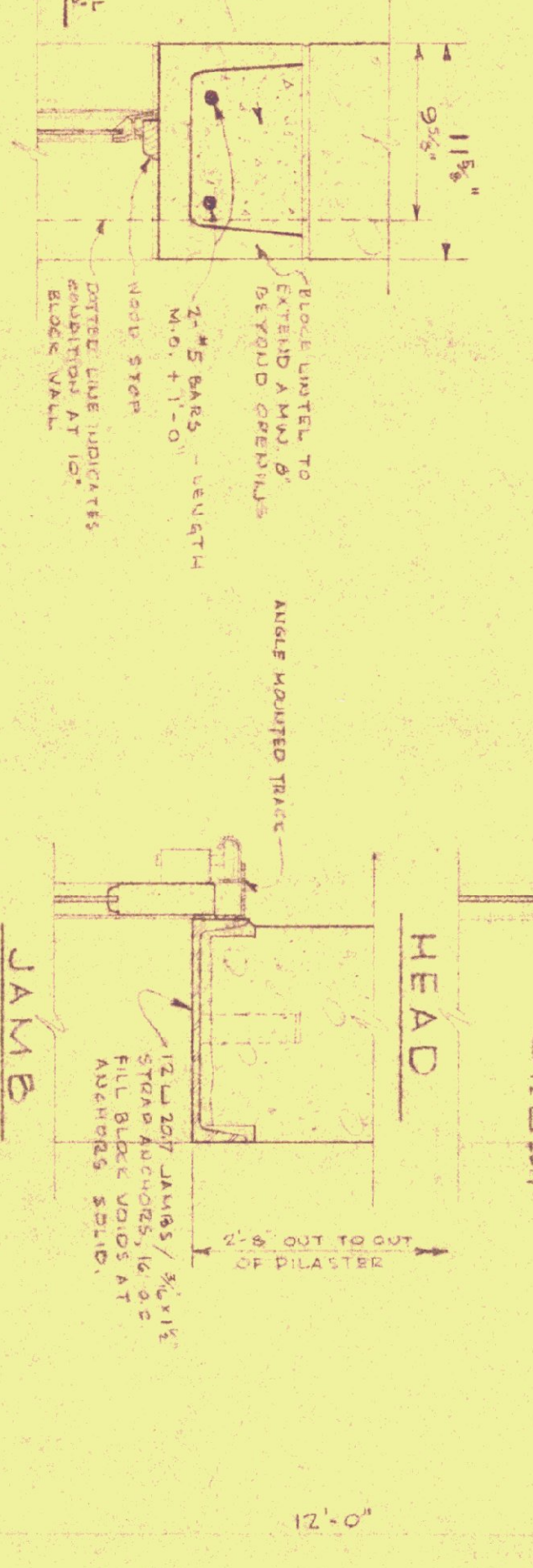


SECTION X-Y
THRU INLET SHOTTER
SCALE 1/2" = 1'-0"

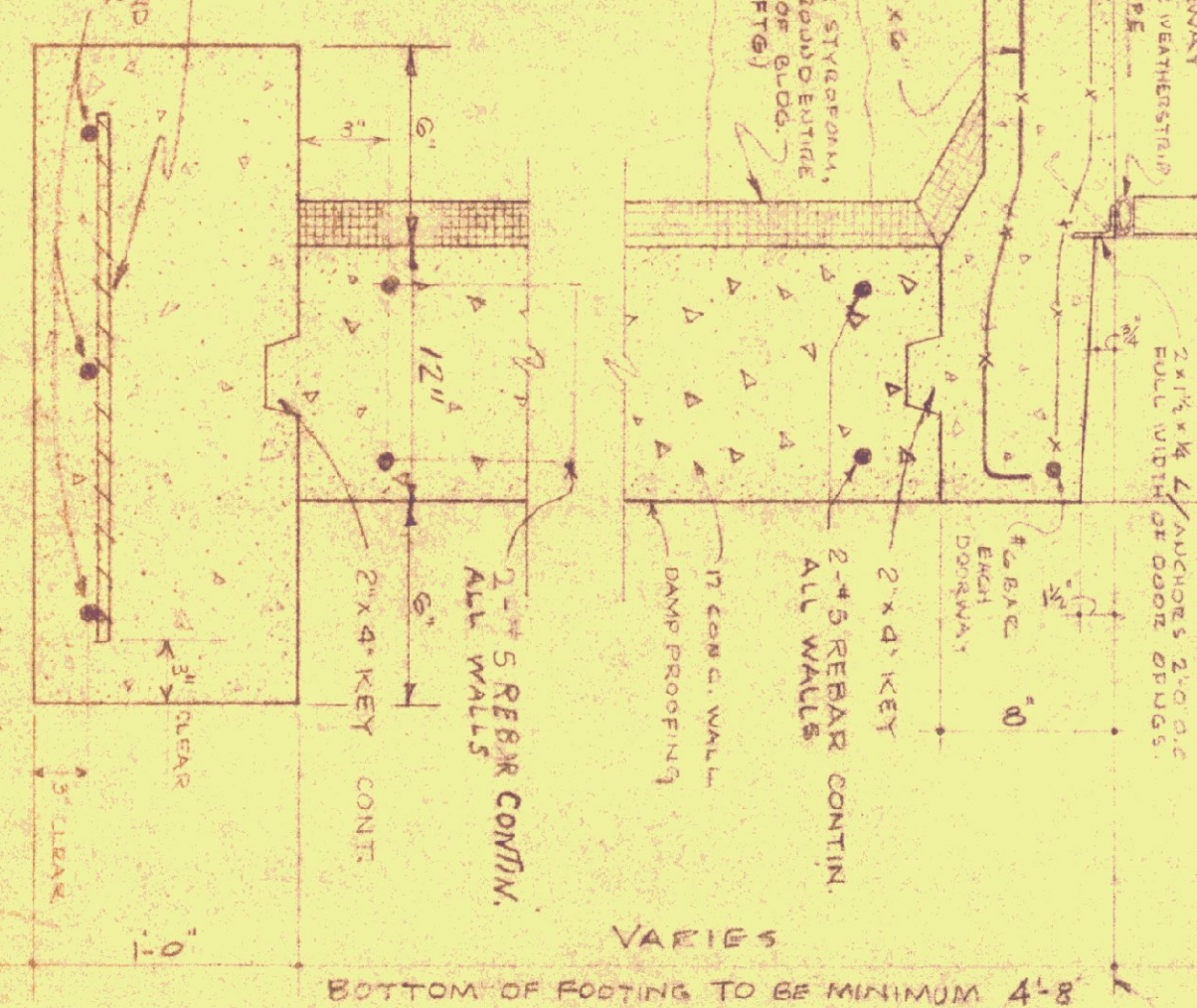
SECTION C-C
SCALE 1/2" = 1'-0"



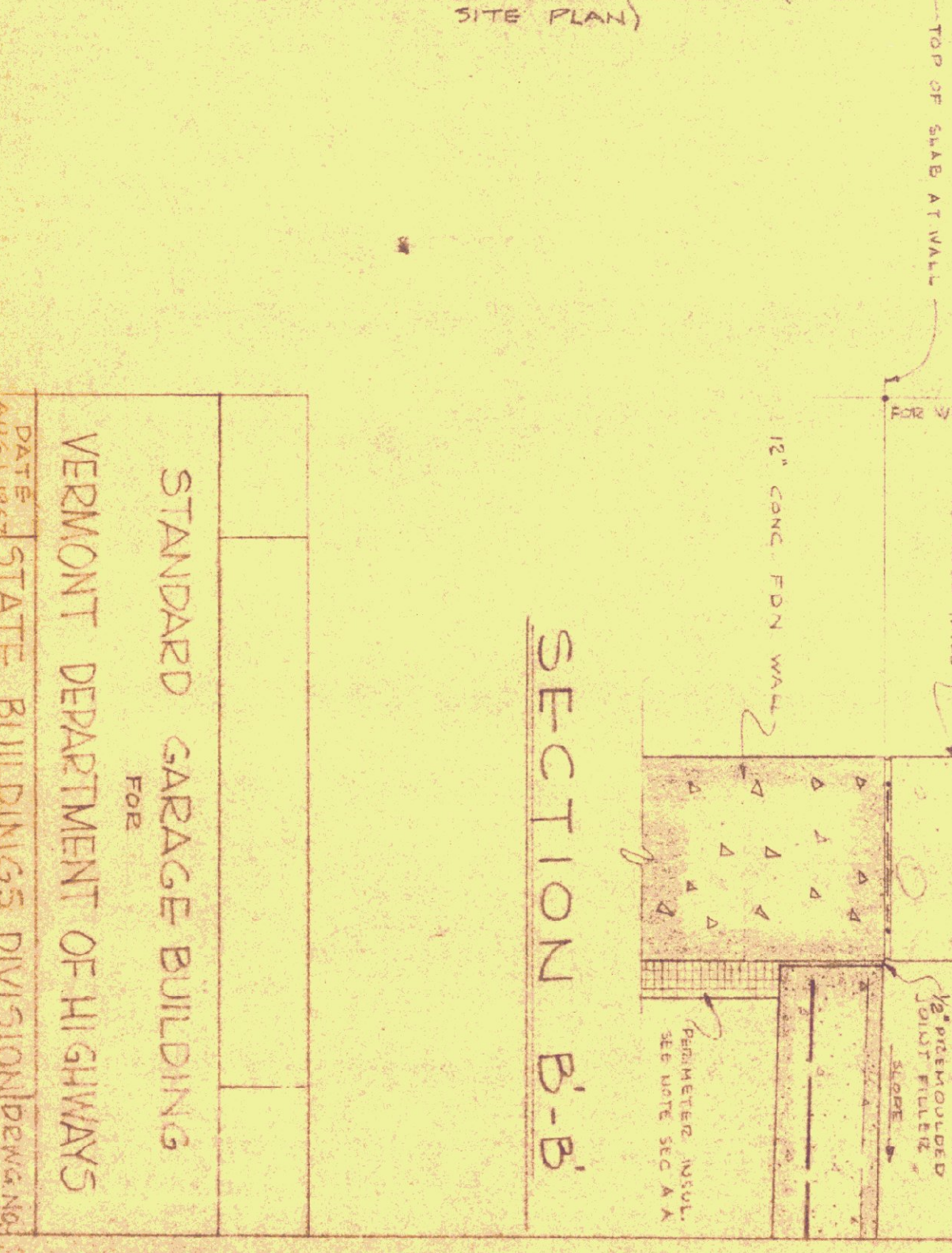
SECTION X
SCALE 1/2" = 1'-0"



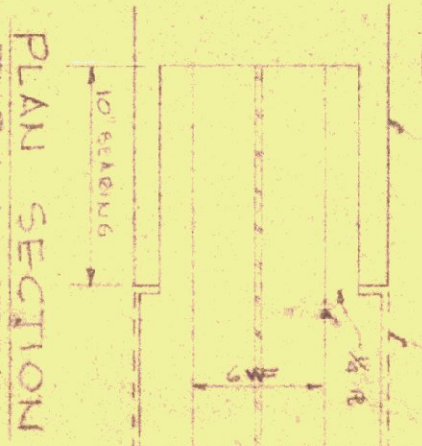
SECTION D
LINETEL AT WINDOWS A, C, E, G, I, D



SECTION A-A
SCALE 1/2" = 1'-0"



SECTION B-B
SCALE 1/2" = 1'-0"



PLAN SECTION THRU INLET
SCALE 1/2" = 1'-0"

NOTE:
ALL MATERIALS & CONSTRUCTION SHALL BE TO SPEC A.A.

STANDARD GARAGE BUILDING FOR VERMONT DEPARTMENT OF HIGHWAYS	
DATE AUG 1927	DEPT. OF ADMINISTRATION VERMONT
DRAWN BY MONTGOMERY	DEWAINE 3