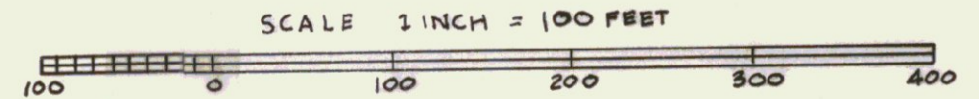


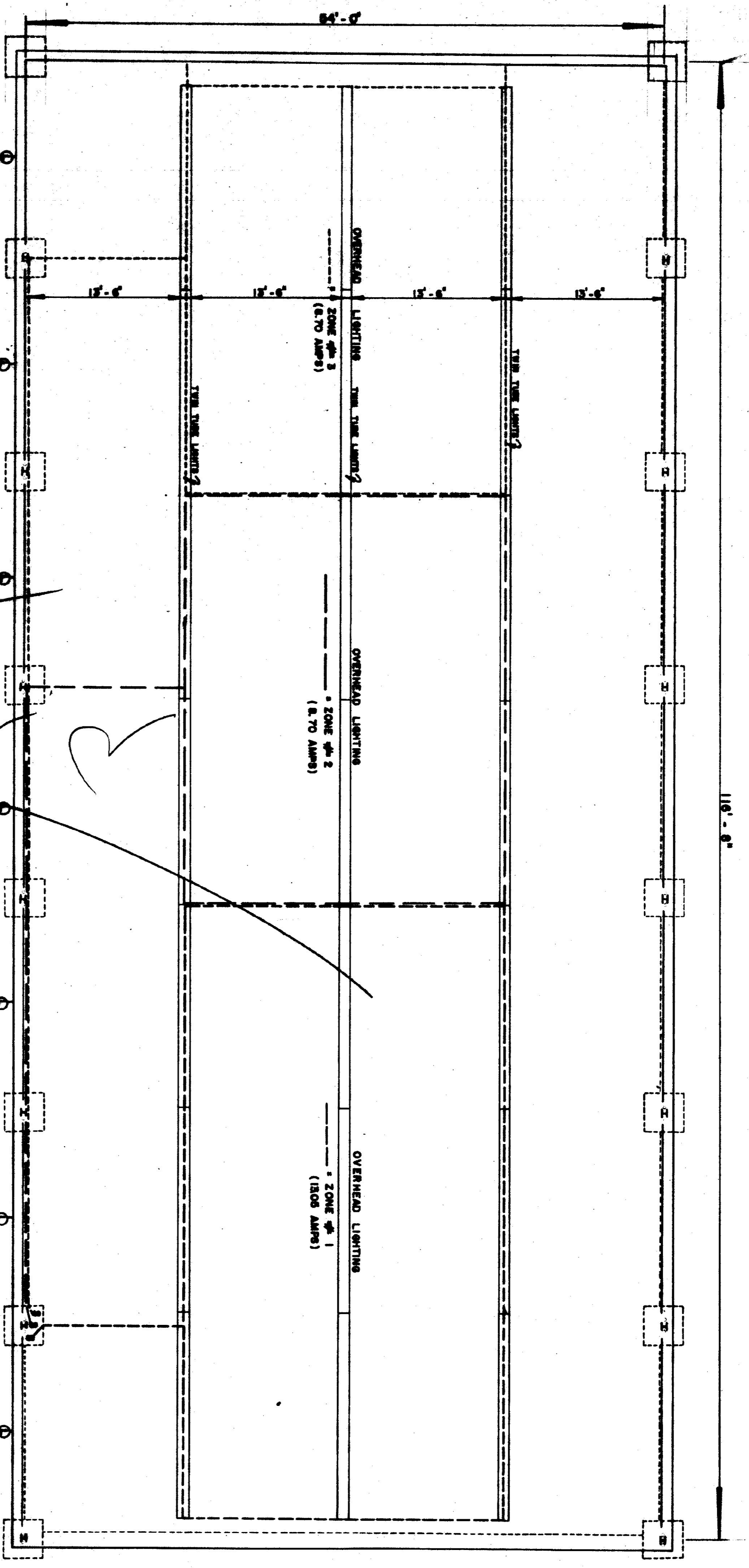
MARIAN E. WAGNER
To
STATE OF VERMONT

Warranty deed Recorded Book Page
283 acres ±

Survey and plan by Vermont Department of
Highways October 23, 1962 - G.M. Lane.



STATE OF VERMONT	
DEPARTMENT OF HIGHWAY	
TOWN OF <i>ROYALTON</i>	Bridge No.
HIGHWAY NO. <i>GARAGE</i>	Log Sta.
	Surv. Sta.
Drawn by	



ROYALTON
 STATE OF VERMONT
 HIGHWAY DEPARTMENT
 GARAGE FOR DISTRICT 5
 VT. ROUTE 14
 WIRING LAYOUT
 SHEET 1 OF 2

