

6 Columns C1
 2 d.
 C2
 One d.
 C6

5 Columns C3
 One d.
 C4
 One d.
 C5

BILL OF MATERIAL

NO.	PIECES	MARK	DESCRIPTION	LENGTH		WEIGHT
				FT.	IN.	
1	2		6 Col C1			
2	2		d. C2			
3	2		One d. C6			
4	15		6 WF20	15	0 3/8	M2E Res. 45.50
5	14		6 WF20	14	6 8	M2E Res. 45.50
6	1		Base Plate	0	0	100-0102-050
7	0		R. Col	0	10 1/2	100-C3, C4
8	0		d.	0	9 1/4	100-C5
9	0		12 d. 1	0	4 1/2	100-05-200-C3

VERMONT STRUCTURAL STEEL CORPORATION
 BURLINGTON, VT

PROJECT: Garage for Dist #5
 LOCATION: ROYALTON, VERMONT
 CUSTOMER: State of Vermont
 Dept. of Highways

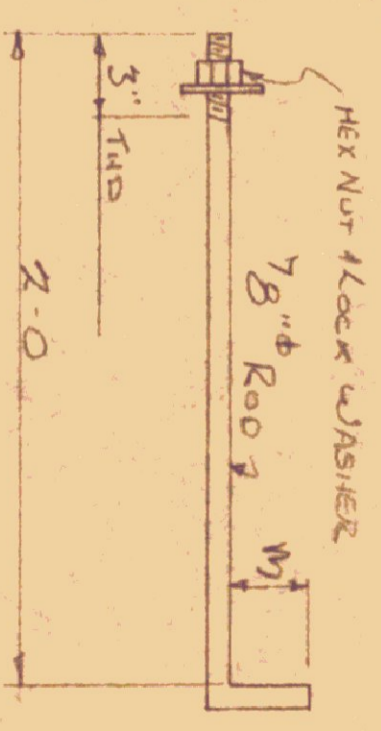
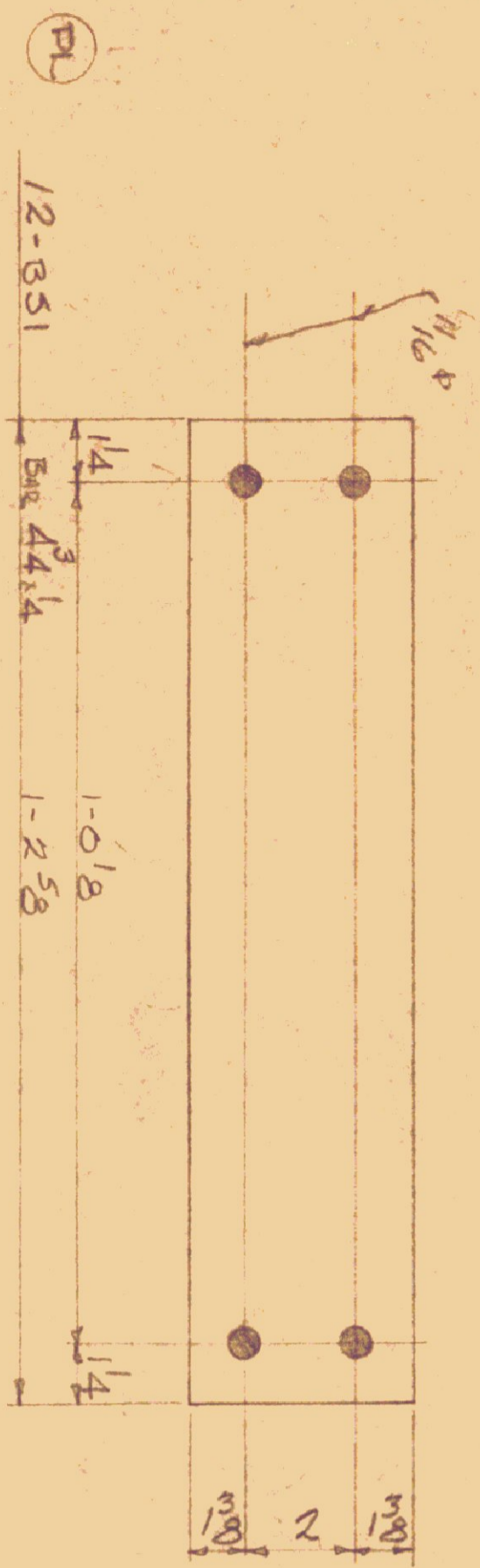
ARCHITECT: J. H. Green
 JOB NO. 62-579
 SHEET NO. 1

DATE: 8-15-62
 DRAWN BY: K. J. Green
 CHECKED BY: J. H. Green

HOURS: 19 1/2 hrs. needed
 ARCHITECT: J. H. Green
 PAINT: T. M. Green
 JOB NO. 999

PRINT RECORD:
 NO. FOR DATE
 3 APP 650
 30 SHOP 650

M



(A) 28 ANCHOR BOLTS BS1

VOID

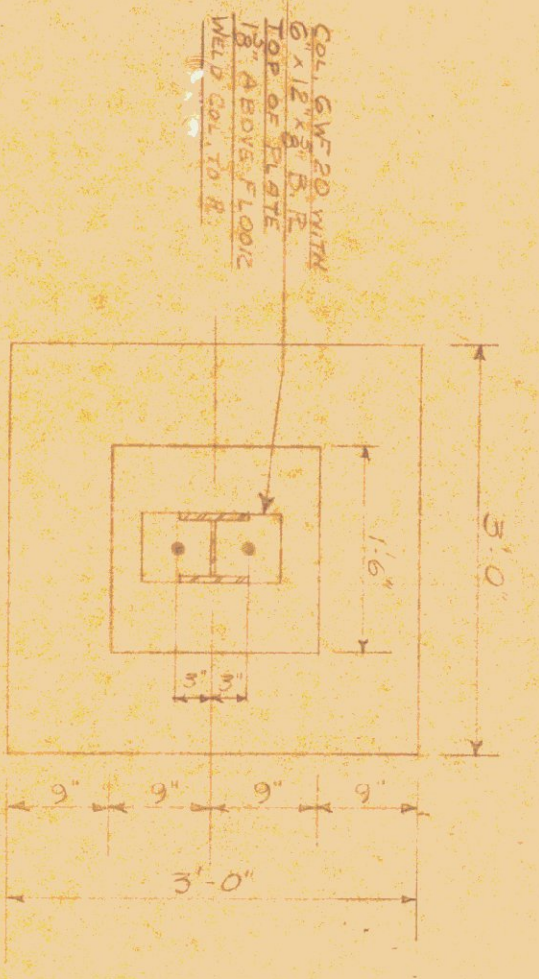
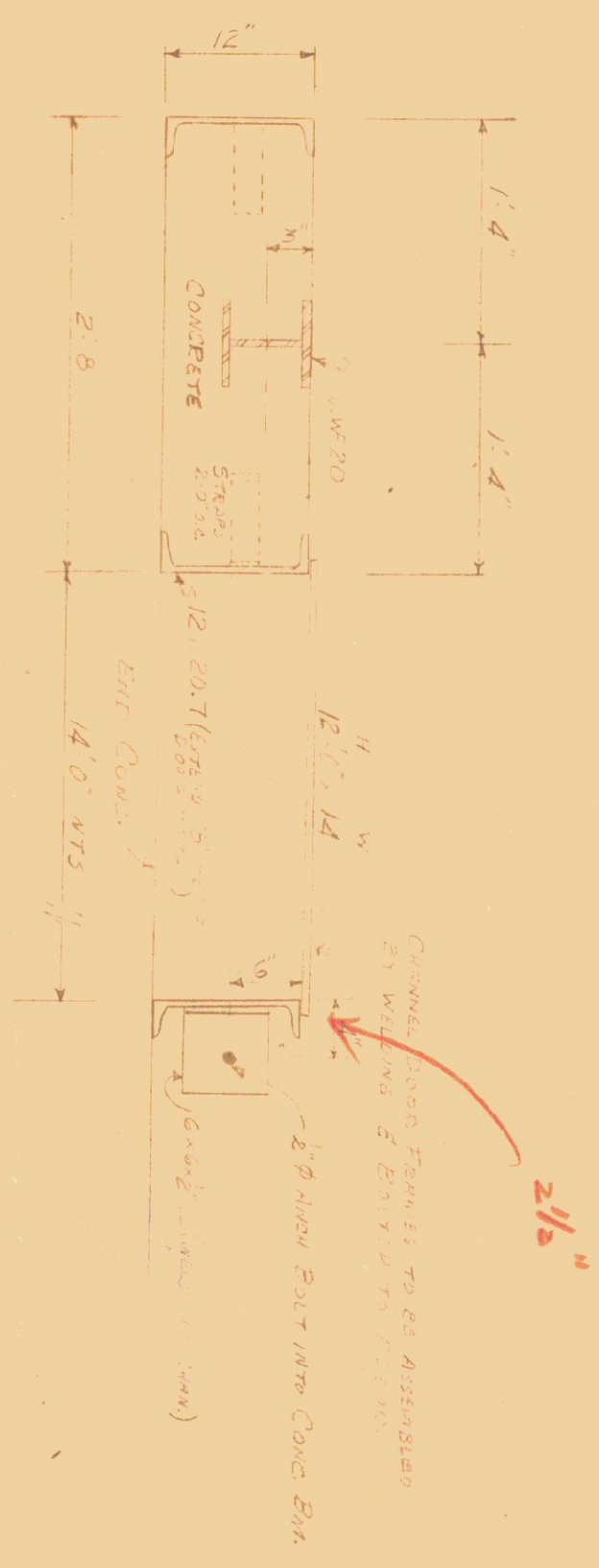
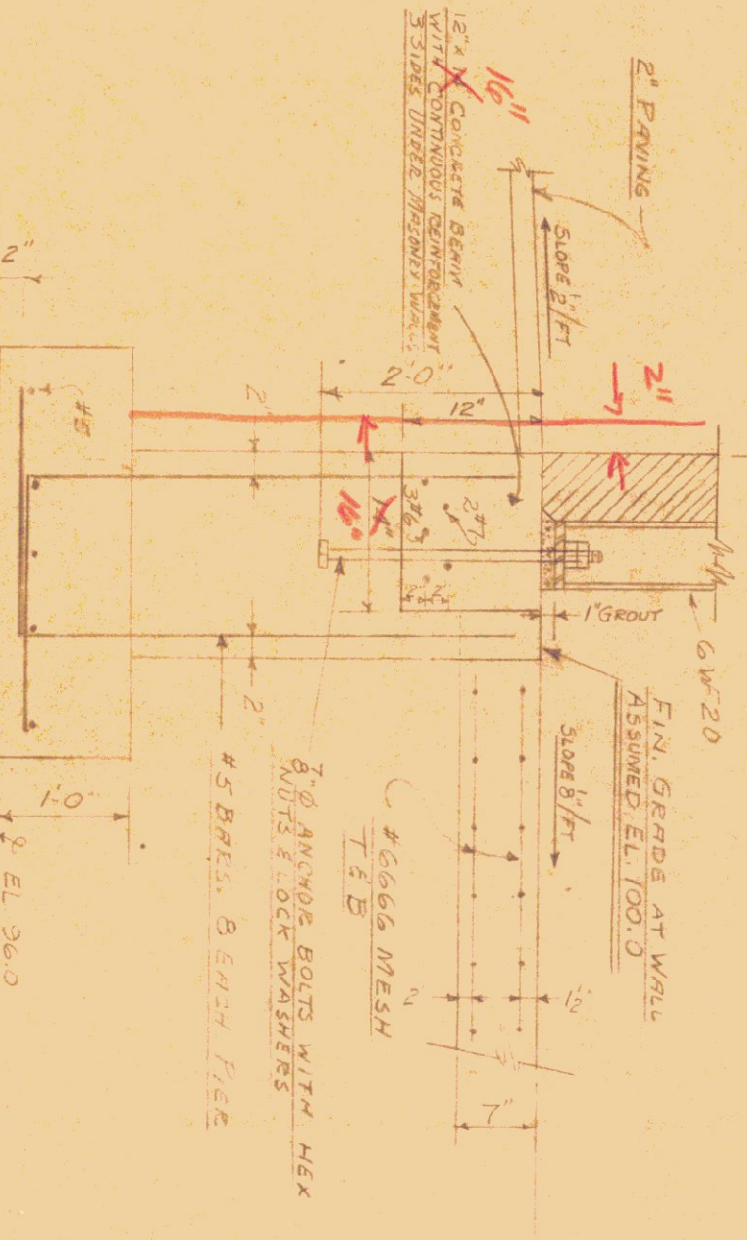
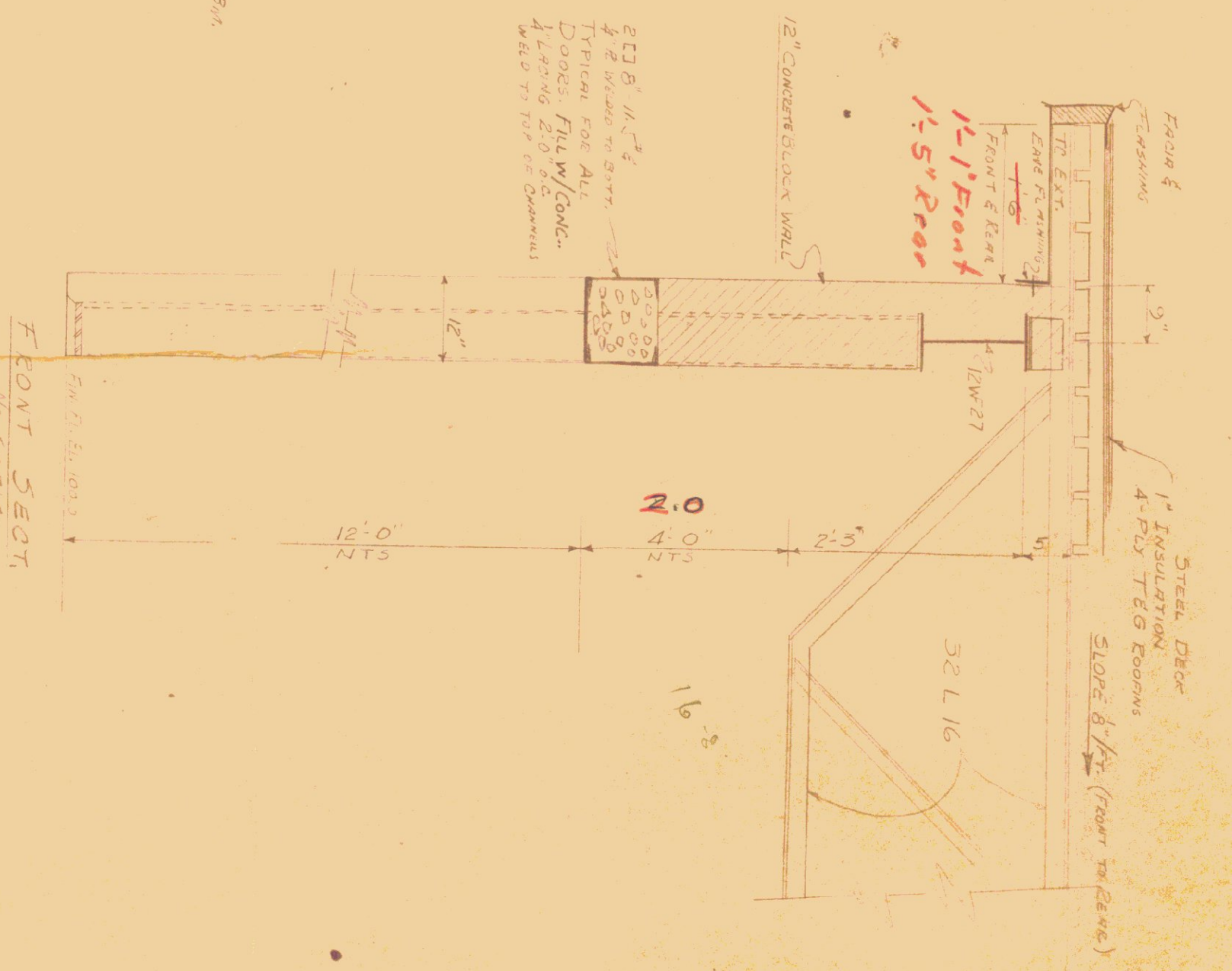
BILL OF MATERIAL

NO.	PIECES	MARK	DESCRIPTION	LENGTH		WEIGHT
				FT.	IN.	
12			12 BAR SUPPORTS BS1			
			BAR 44 x 4	1	258	572
97			FIELD MARK			
			3/4" BOLTS	0	2	
12			3/4" BOLTS	0	12	
130			do	0	134	
49			5/8" BOLTS	0	12	
12			3/4" PLNG BOLTS	0	4	
12			3/4" LRG SHIELDS			
12			KG 4 x 7/16	11	9	
2			do	5	1	
4			do	4	8	
2			do	9	1	

VERMONT STRUCTURAL STEEL CORPORATION
BURLINGTON, VT.

PROJECT	GARAGE FOR DIST # 5	PRINT RECORD	
LOCATION	ROYALTON, VT.	NO.	3
CUSTOMER	STATE OF VERMONT	FOR	APP 810
ARCHITECT	DEPT OF HIGHWAYS	DATE	30 NOV 810
JOB NO.	62-579	SHEET NO.	3
DATE	3/5/62		
DRAWN BY	KT BROWN		
NOES	As NOTED		
PAINT	THERMOC GREEN		

16 STRIPS @ 16" 8" = 100' 0"



- REINFORCING STEEL**
- 4 #7 x 5'-0"
 - 6 #6 x 5'-0"
 - 4 #7 x 25'-0"
 - 6 #7 x 25'-0"
 - 16 #7 x 21'-0"
 - 14 #6 x 21'-0"
 - 4 #7 x 24'-0"
 - 6 #7 x 24'-0"
- Side BMS: 21' 21' 21' 21' 21' 21'
- All Laps: 3'-0"

TYPICAL FOOTING

PLAN

FIN FLOOR ASSUMED EL. 100.0

TYPICAL FRONT

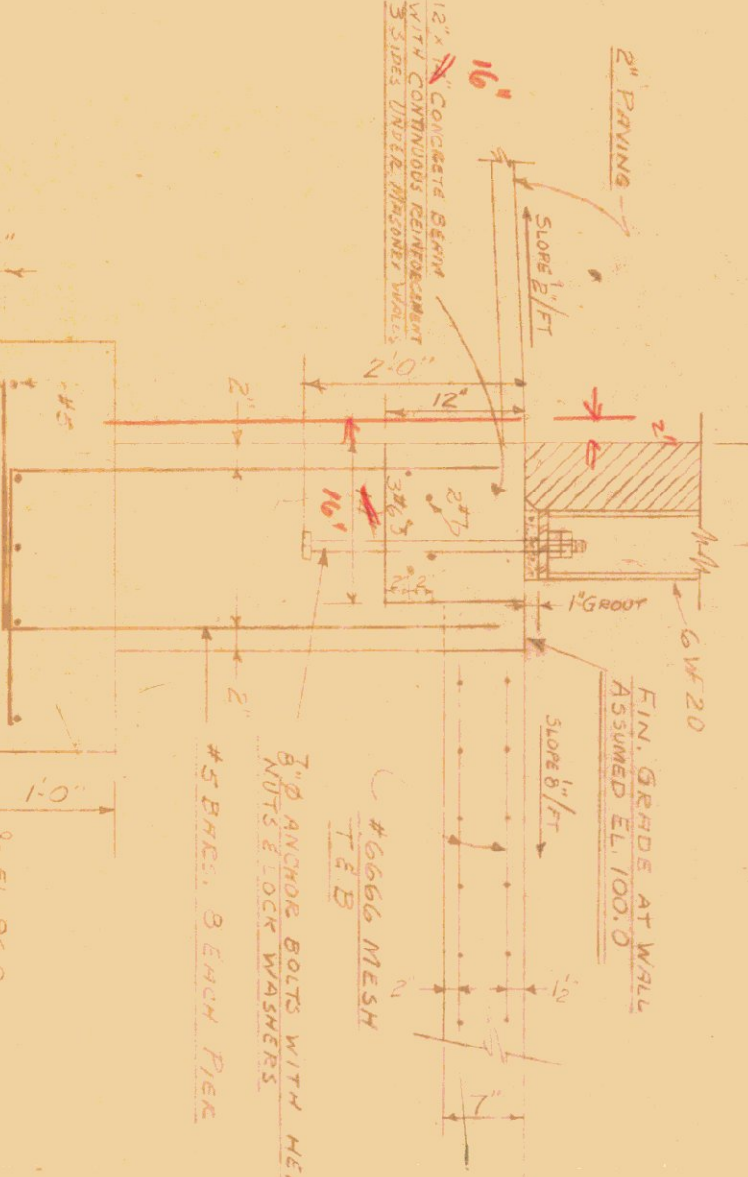
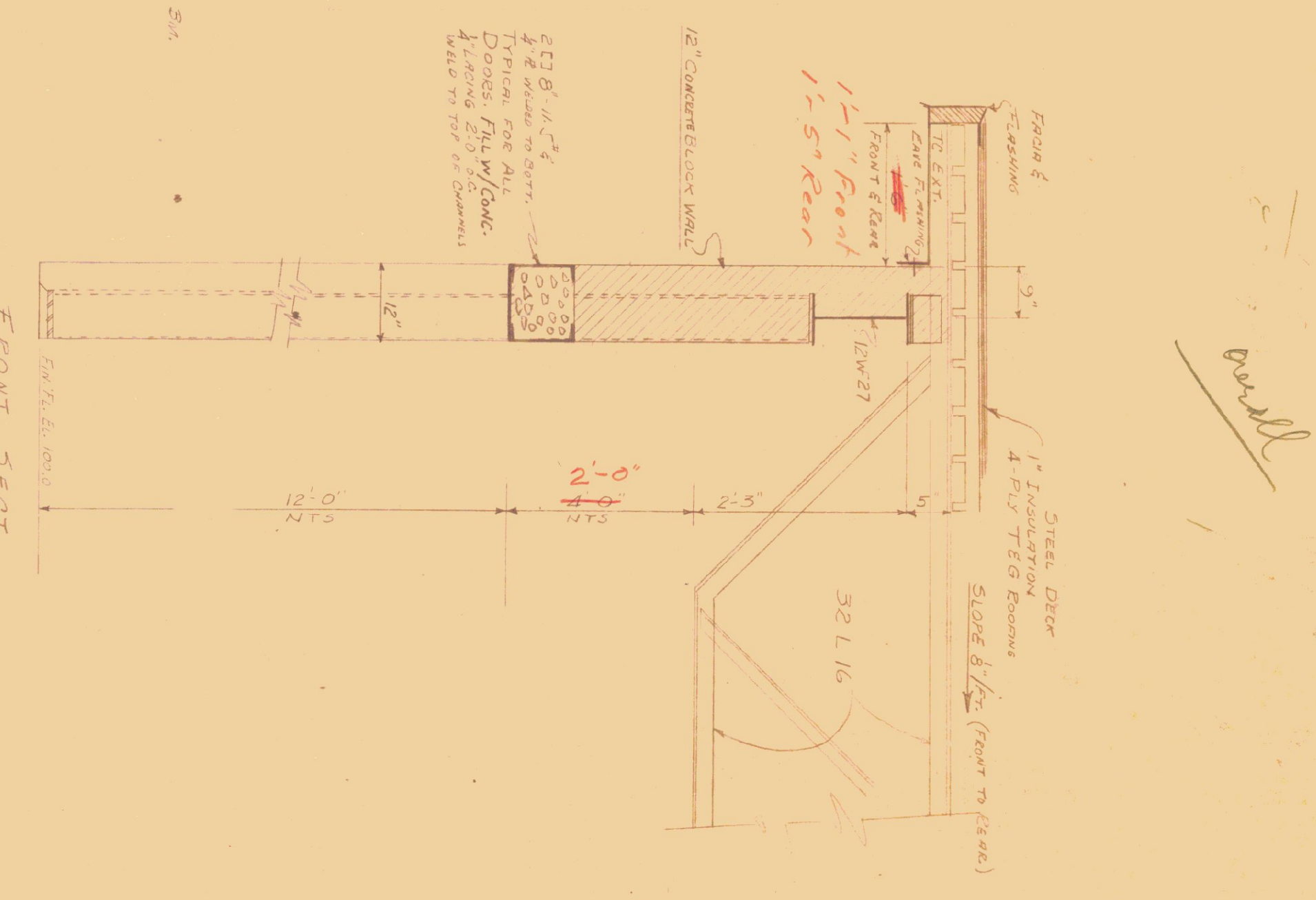
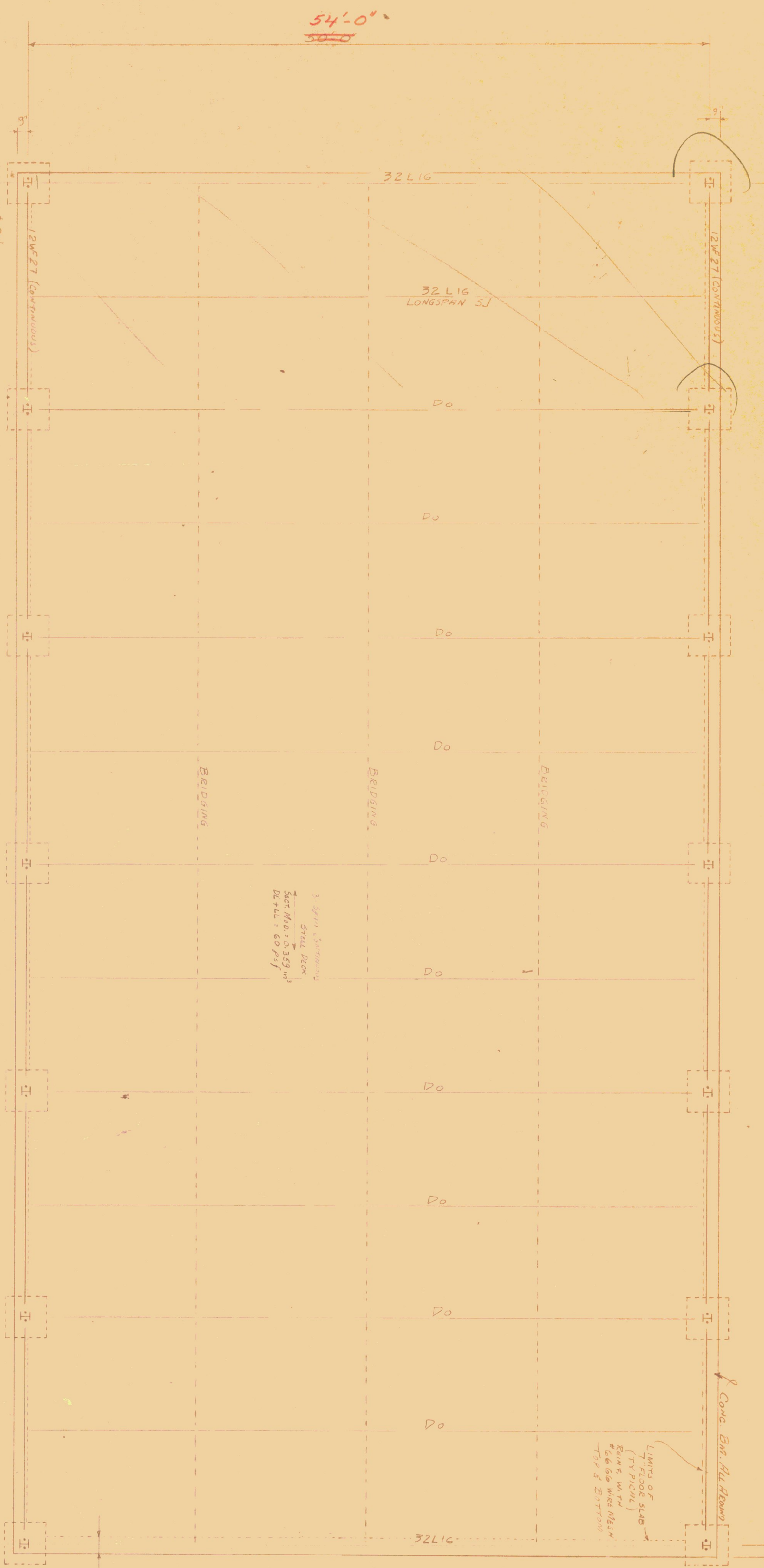
FRONT SECT

STRUCTURAL SHOP DRAWINGS ARE TO BE APPROVED BY THE ENGINEER BEFORE FABRICATION IS BEGUN

STATE OF VERMONT
 HIGHWAY DEPARTMENT
 GARAGE FOR DISTRICT NO. 5
 U.S. ROUTE 2 101
 WOODVILLE
 ROYALTON

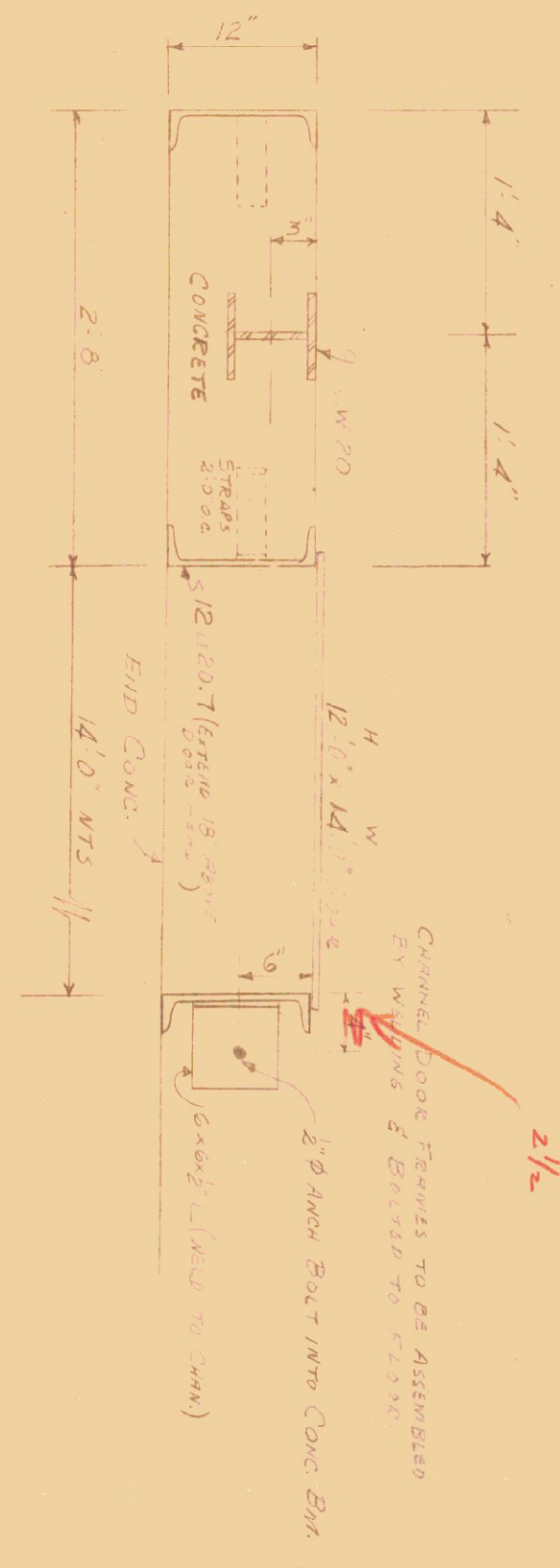
DESIGN BY: ENNASCO
 OCTOBER 1956
 Revised 9/16/60

116'-8"
 5 STAYS @ 16'-8" = 100'-0"
 5 SPANS @ 16'-8" = 83'-4"



PLAN
 SCALE: 1/8" = 1'-0"

TYPICAL FRONT
 SCALE: 1/8" = 1'-0"

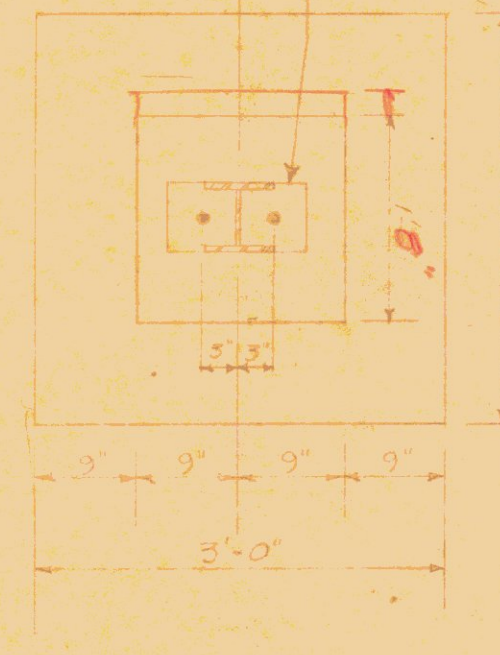


FRONT SECT
 1/8" SCALE

REINFORCING STEEL

1	7'-3.0'	4W 8M	2'-2"
2	8'-6.5'-0"	4W 8M	2'-2"
3	8'-7.25'-0"	4W 8M	2'-2"
4	8'-7'-8.5'-0"	4W 8M	2'-2"
5	16'-7'-21'-0"	4W 8M	2'-2"
6	24'-6'-21'-0"	4W 8M	2'-2"
7	4'-7'-24'-0"	4W 8M	2'-2"
8	6'-6'-24'-0"	4W 8M	2'-2"

ALL LAPS 2'-0"



CONCRETE WALL
 12" x 27"
 CONCRETE FLOOR
 12" THICK
 WITH CHANNEL IRON

TYPICAL PIER

1/6" B
 80'
 53'-4"
 40'

STRUCTURAL SHOP DRAWINGS ARE TO BE APPROVED BY THE ENGINEER BEFORE FABRICATION IS BEGUN.

STATE OF VERMONT
 HIGHWAY DEPARTMENT
 GARAGES FOR DISTRICT NO. 5
 ROUTE 214
 MIDDLEBURY ROYALTON
 DESIGN BY: RENASCO
 OCTOBER 1958
 R.V. & G.A. DION
 JUNE 1962