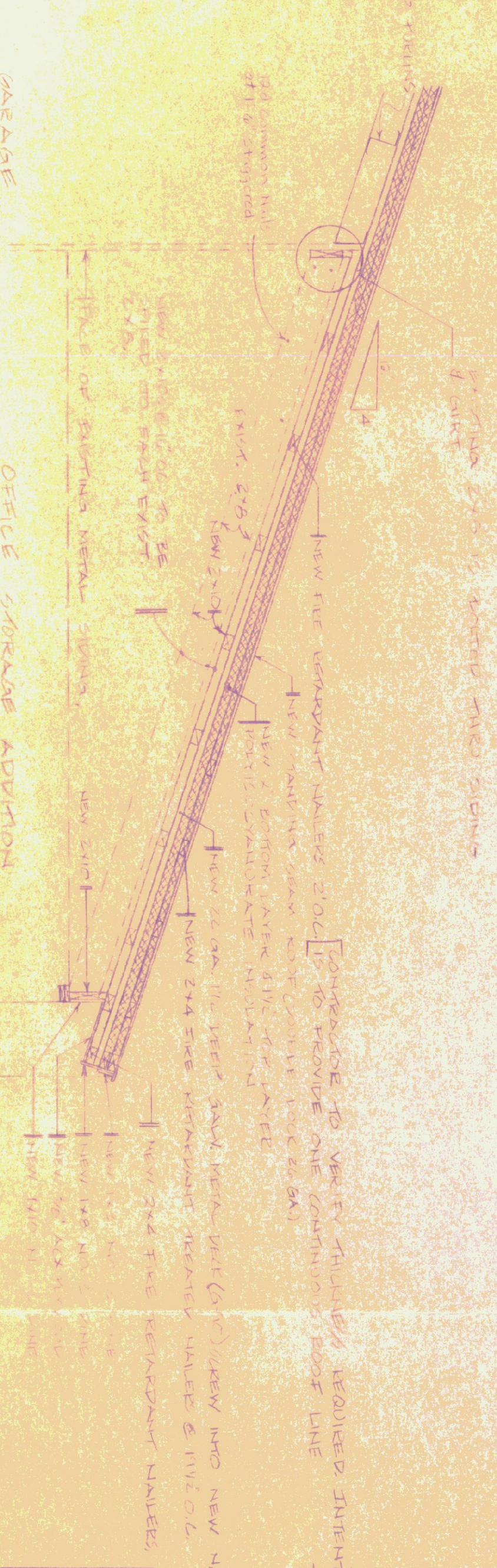
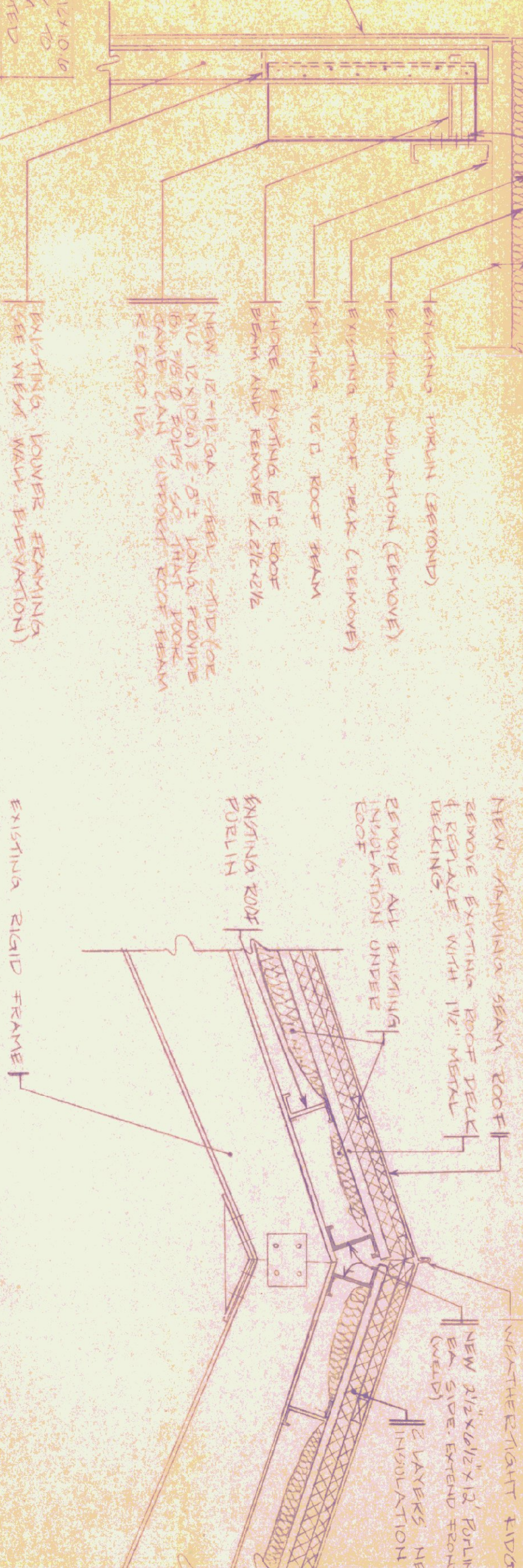


SECTION C
SCALE 1/8" = 1'-0"

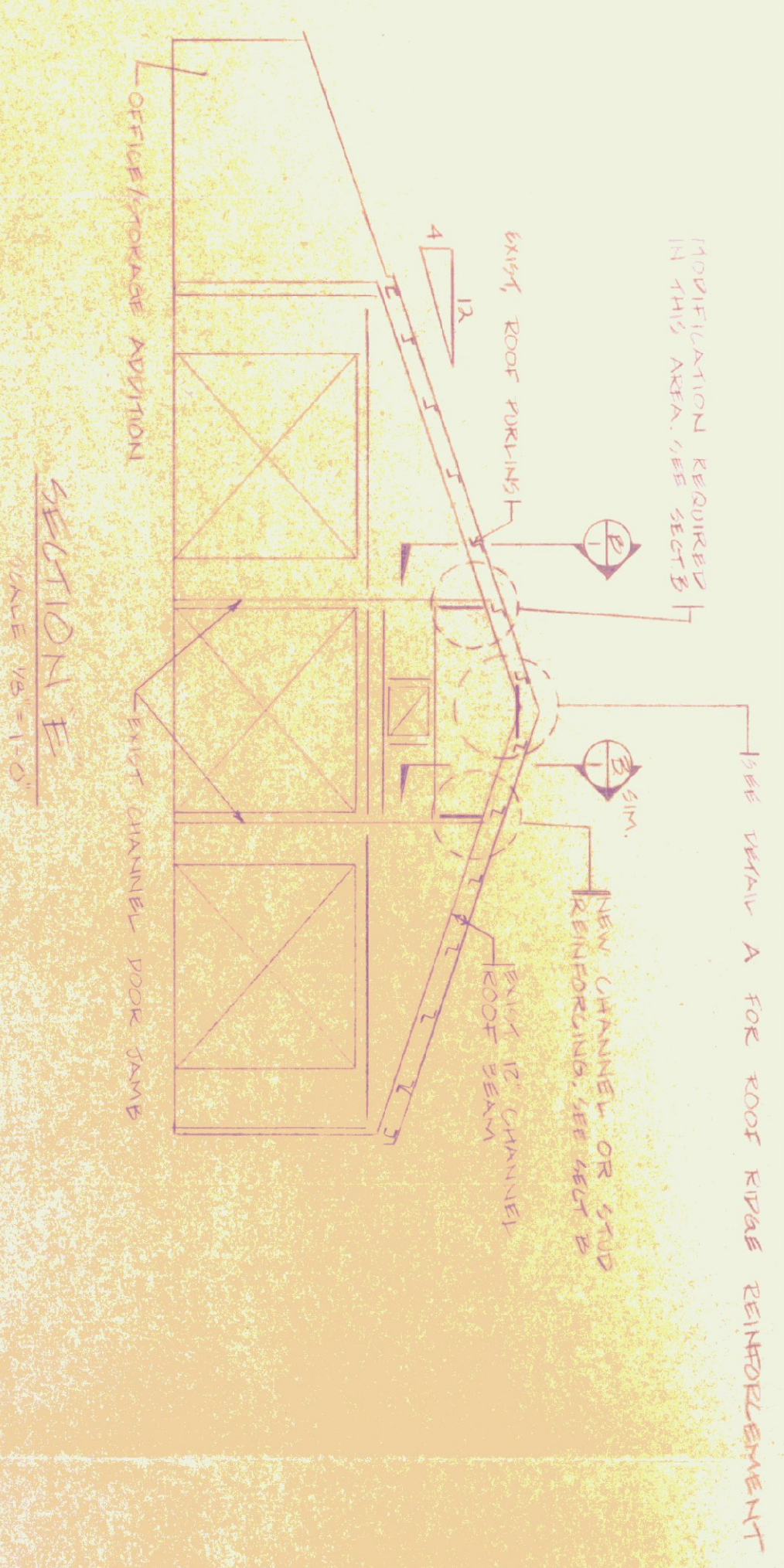


SECTION B
SCALE 1/8" = 1'-0"

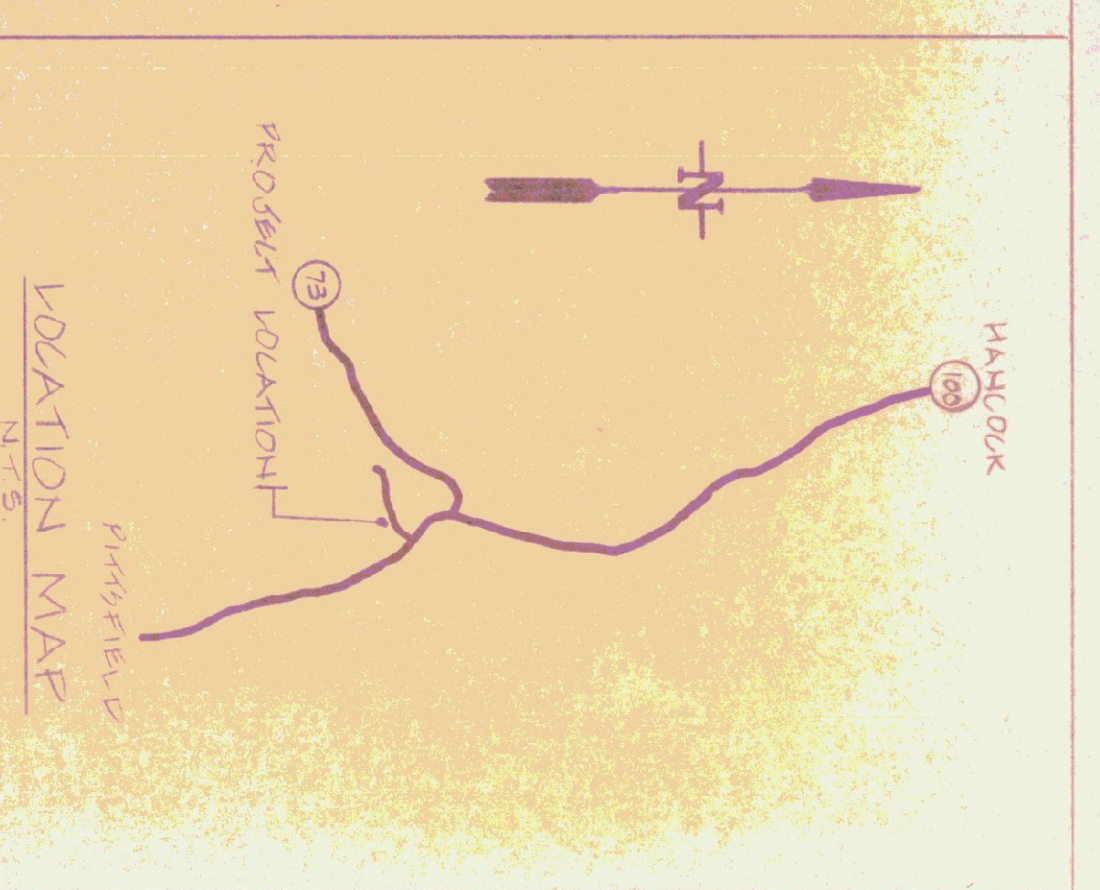
DETAIL A ROOF RIDGE
SCALE 1/8" = 1'-0"



SECTION D
SCALE 1/8" = 1'-0"



SECTION E
SCALE 1/8" = 1'-0"



NOTES

- 1) REMOVE EXISTING ROOFING & INSULATION ON GARAGE & OFFICE ADDITION.
- 2) NEW 2x4 1/2 DEEP TYPE B GAW METAL DECK (G90) TO BE WELDED TO EXISTING METAL PILING & SECURED TO NEW 2x10s. MANUFACTURE TO BE APPROVED STEEL YIELD OF APPROVED EQUAL.
- 3) NEW ROOFING TO BE 2x4x6 GALVANIZED STEEL.
- 4) ADD NEW PILING TO LENGTH OF RIDGE & EDGE AS SHOWN.

ROOF DESIGN LOAD
40 PSF LIVE LOAD
44 PSF DEAD LOAD

ALTERATIONS PROPOSALS BY THE ENGINEERED BUILDING SUPPLIERS WILL BE CONSIDERED HOWEVER, THEY MUST NOT HAVE MORE THAN 5% ABOVE THE EXISTING PILING.

STATE OF VERMONT
DEPARTMENT OF STATE BUILDINGS
AGENCY OF ADMINISTRATION
MONTPELIER, VERMONT

AGENCY OF TRANSPORTATION
ROCHESTER 3 BAY GARAGE
RE-ROOFING PROJECT
VERMONT

DATE	SCALE	REVISIONS	DWG NO.
1-17-90	AS NOTED	1-27-90	R-1
DRAWN BY: F. RANT		APPROVED BY: F. RANT	