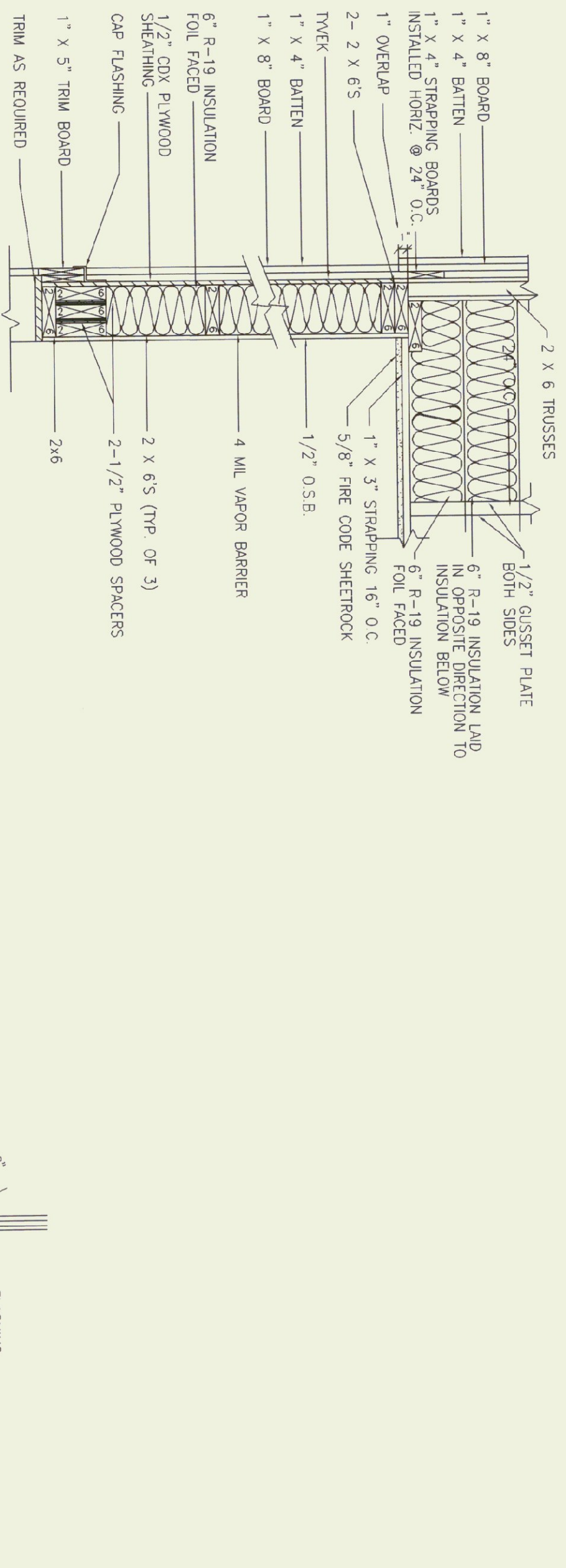
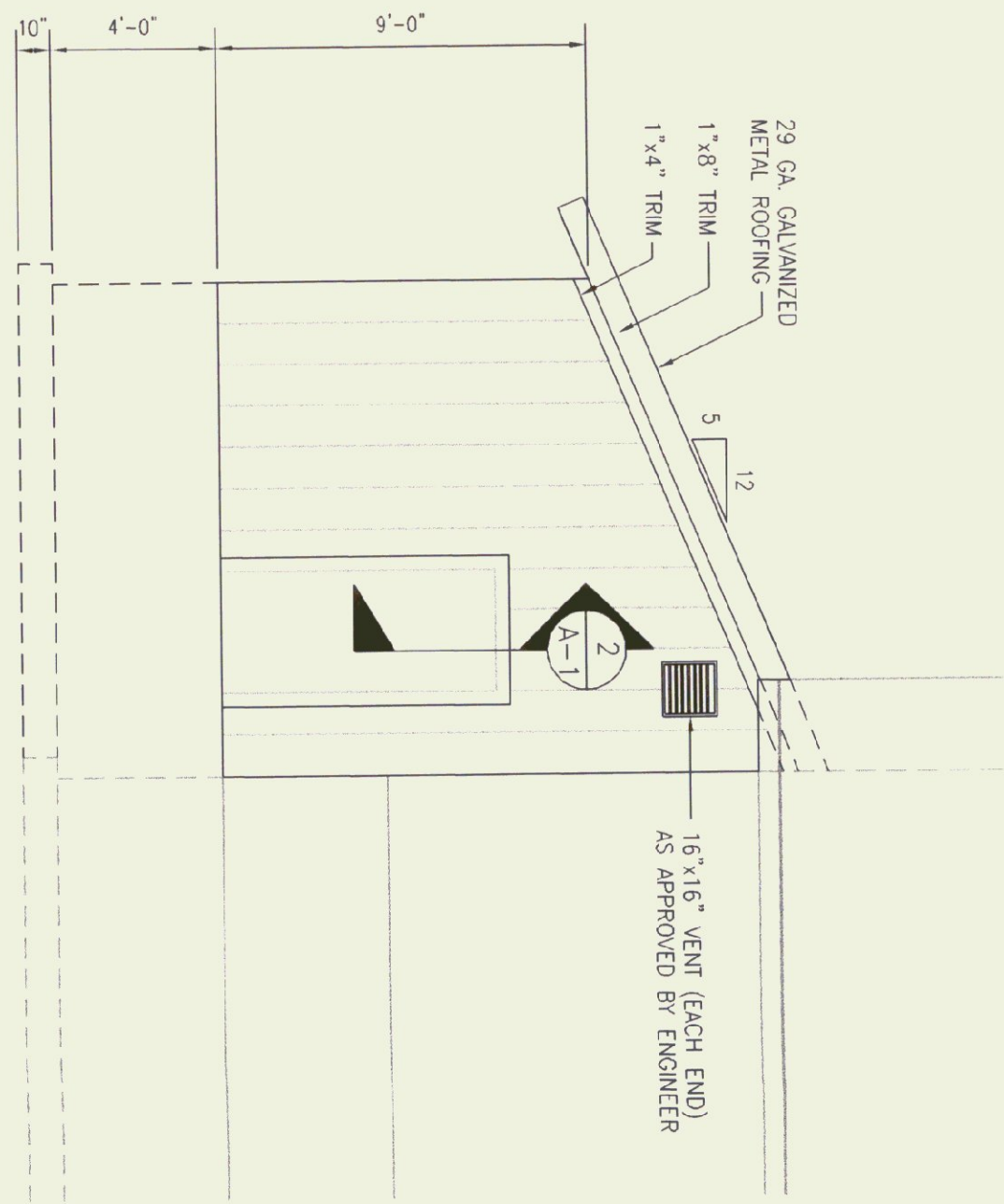
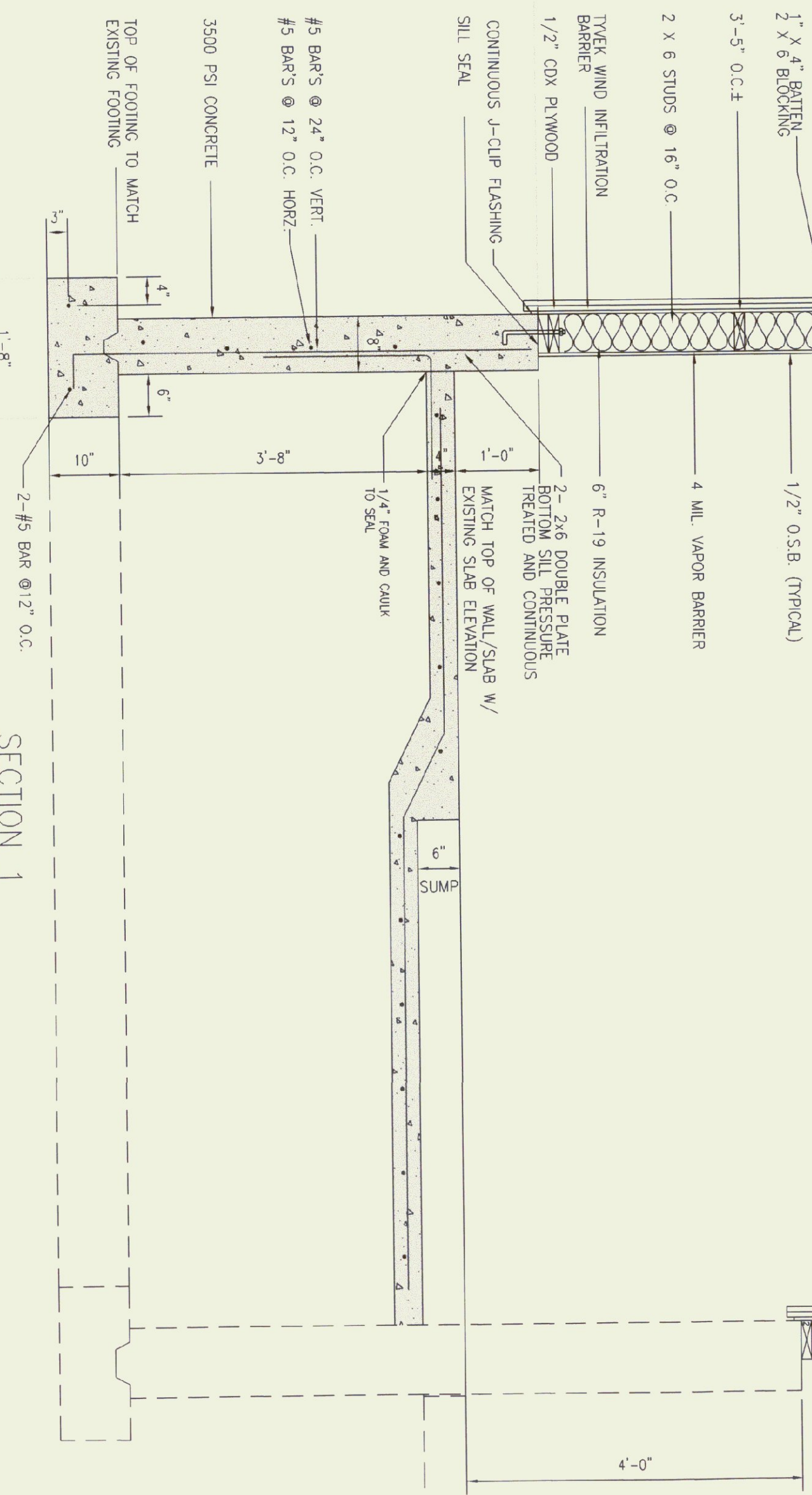


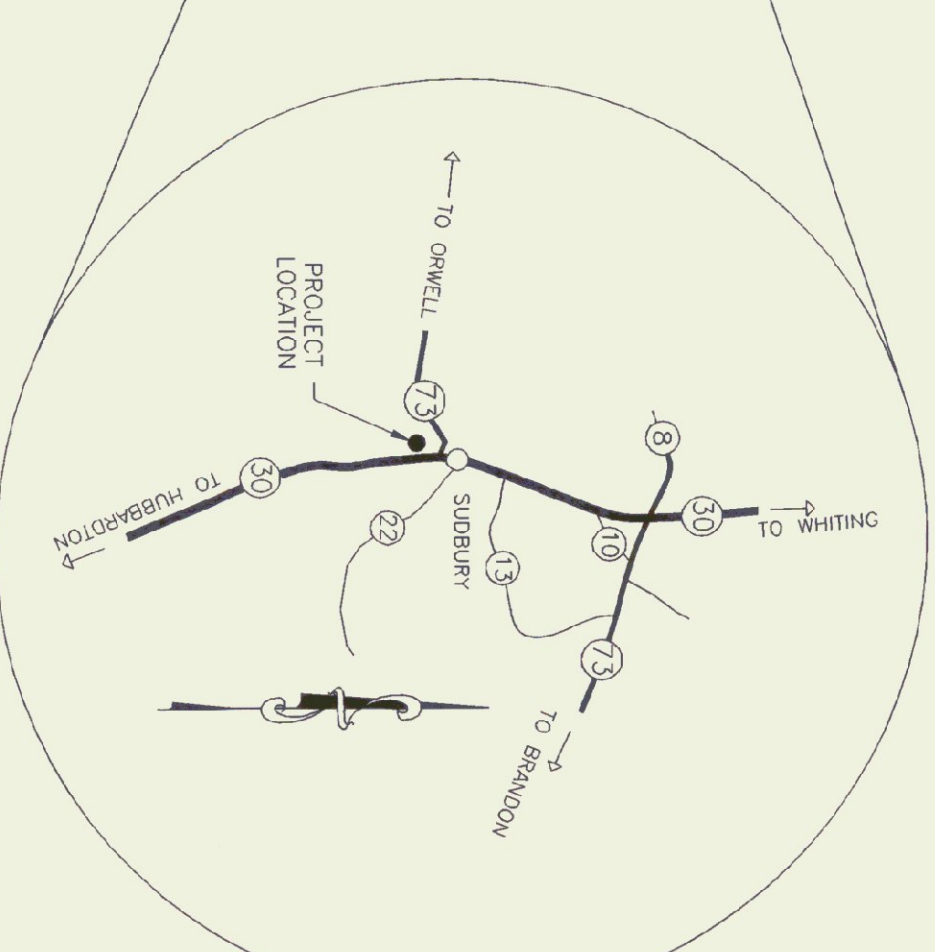
SECTION 2
SCALE: 1"=1'-0"



SECTION 1
SCALE: 3/4"=1'-0"



- GENERAL NOTES:**
1. REMOVE AND RE-USE EXISTING EXTERIOR DOOR IN NEW ADDITION.
 2. DRILL, PIN AND GROUT EXISTING CONCRETE WALL AND FOOTINGS TO JOIN NEW CONCRETE WALLS AND FOOTINGS.
 3. STAIN TO BE OIL BASE SEMI-TRANSPARENT SHERWIN WILLIAMS #3535.



STATE OF VERMONT
Department of Buildings
and General Services
Agency of Administration
Montpelier, Vermont



STORAGE BUILDING ADDITION
SUDBURY MAINTENANCE FACILITY
PLAN AND DETAILS

SUDBURY

VERMONT

PLAN & DETAIL

A-1

1 OF 1

SCALE: AS NOTED

DATE: 2/2002
DRAWN BY: TJ DREW
APPR. BY: RBT

REVISIONS

STORAGE ADDITION