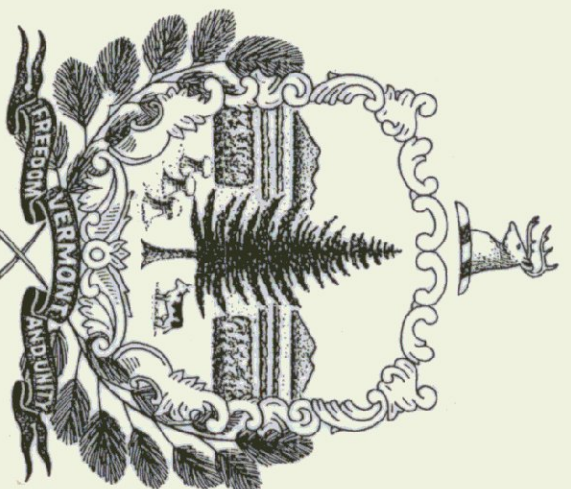


STATE OF VERMONT
 AGENCY OF TRANSPORTATION
THREE BAY MAINTENANCE GARAGE
 SUDBURY, VERMONT

AGENCY OF ADMINISTRATION
 DEPARTMENT OF STATE BUILDINGS
 2 GOVERNOR AIKEN AVENUE
 MONTPELIER, VERMONT 05602
 JOHN J. ZAMPIERI, COMMISSIONER



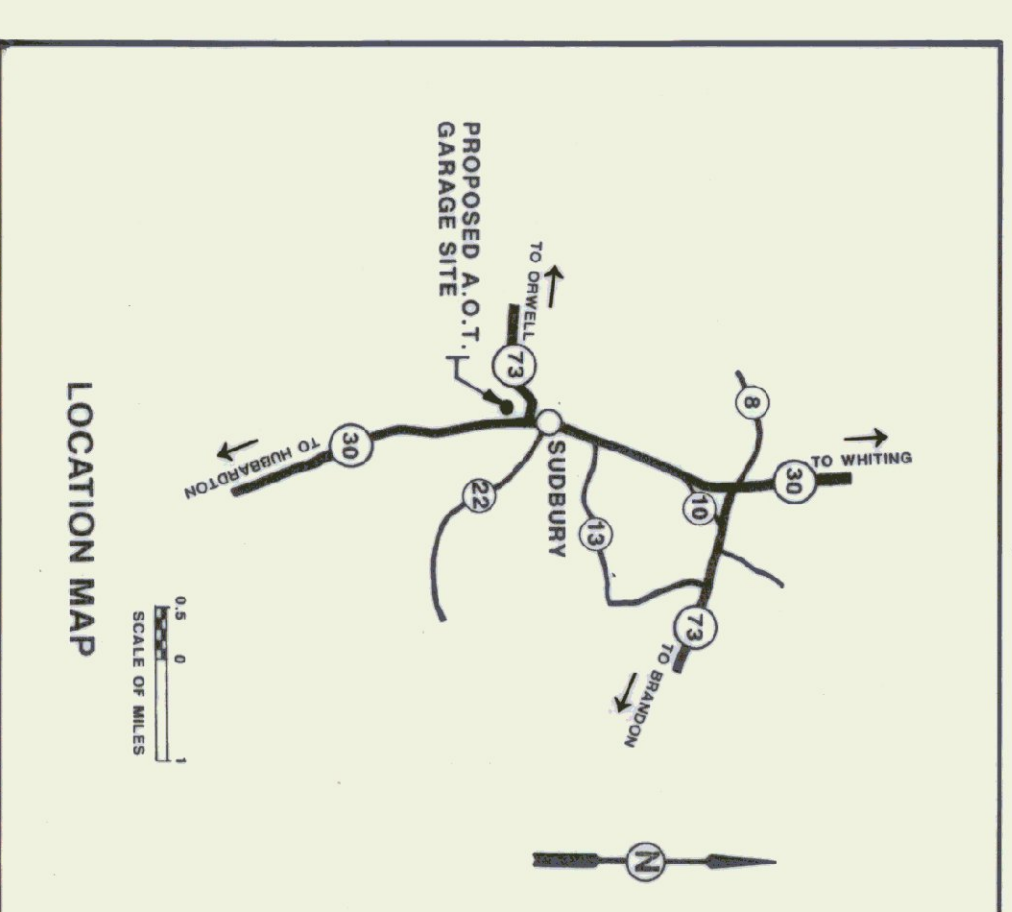
HOWARD DEAN, M.D.
 GOVERNOR

AGENCY OF TRANSPORTATION
 133 STATE STREET
 MONTPELIER, VERMONT 05602
 PATRICK J. GARAHAN, SECRETARY

APRIL 21, 1995

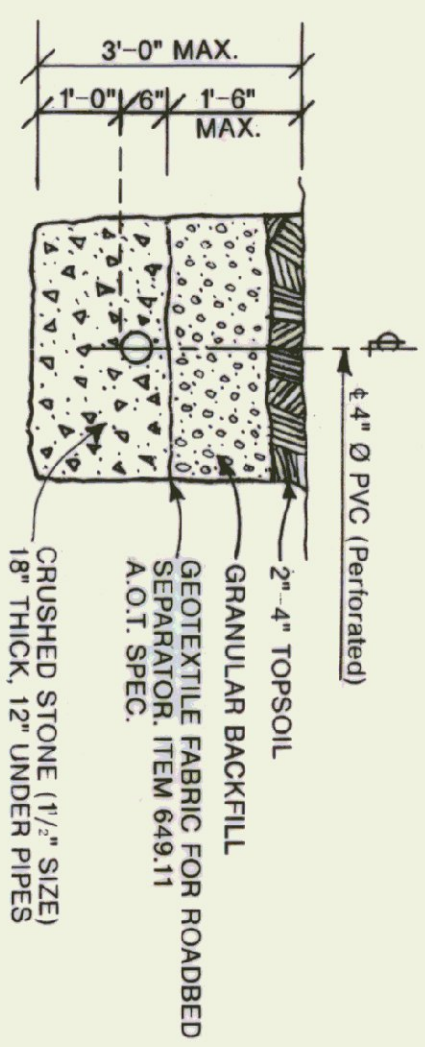
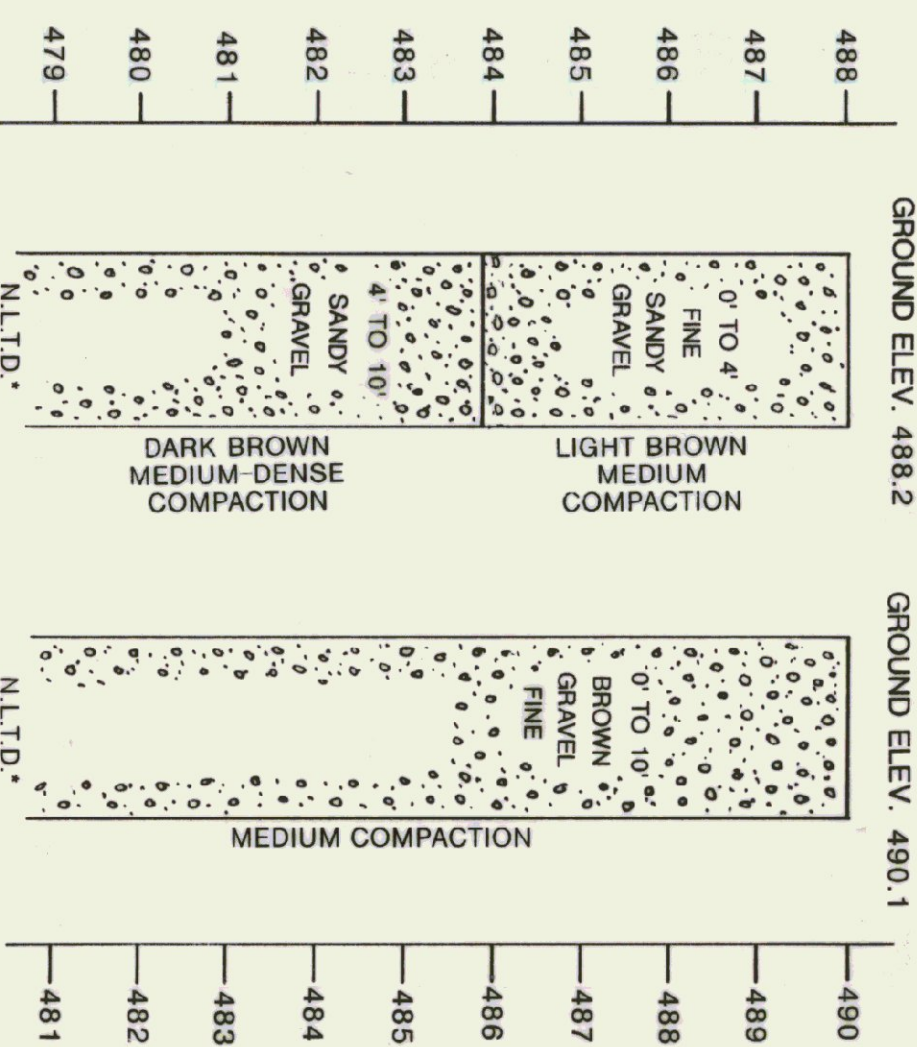
INDEX OF DRAWINGS

T-1	TITLE SHEET
SD-1	SITE PLAN
A-1	PLAN & SECTIONS OF 50' x 54' GARAGE
S-1	FOUNDATION PLAN & ELEVATION
M-1	MECHANICAL PLAN
E-1	ELECTRICAL PLAN
SS-1	40' X 64' SALT & SAND SHED
CSS-1	24' X 48' COLD STORAGE SHED



AS BUILT
 01/22/96

TEST PIT LOG

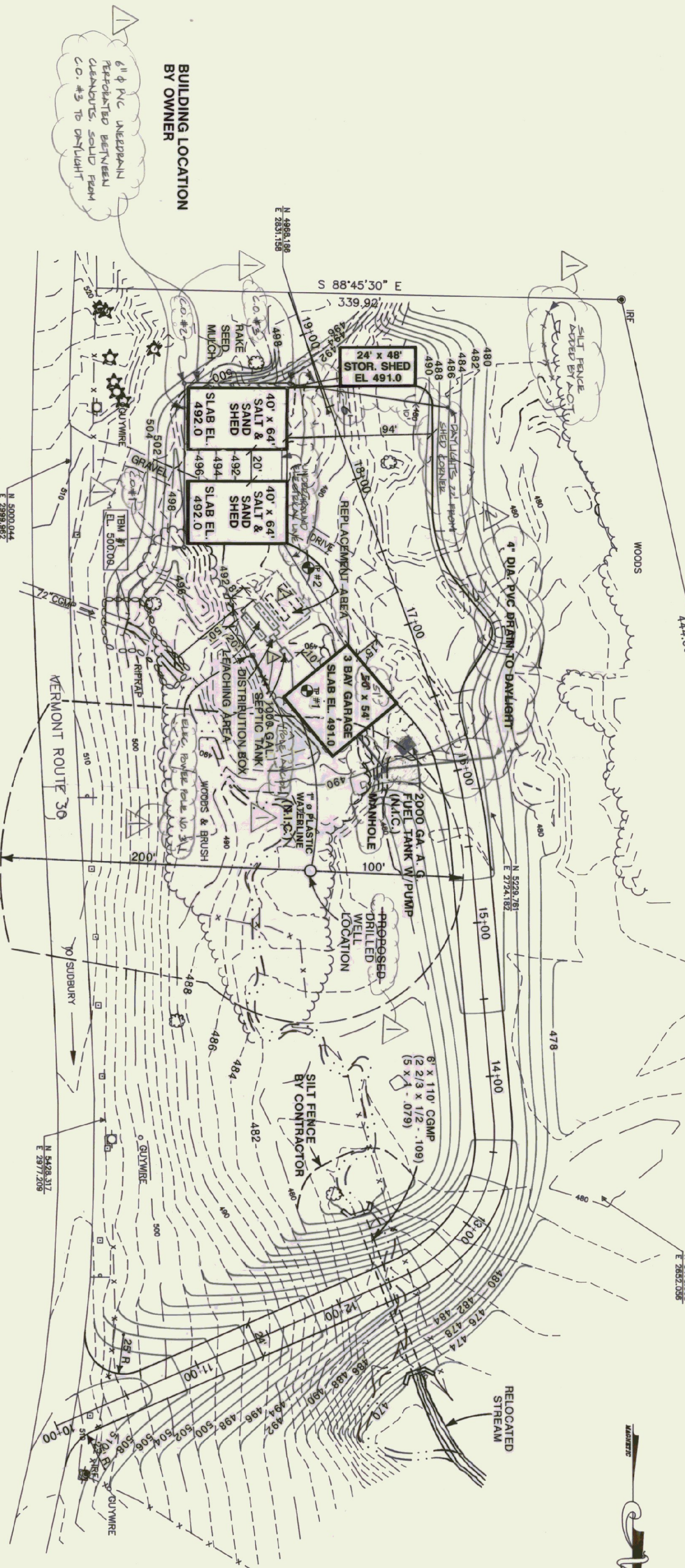


TYPICAL TRENCH SECTIONS
SCALE: 1/2" = 1'-0"

SEPTIC DESIGN INFORMATION

6 EMPLOYEES
DESIGN FLOW 150 GAL./DAY
PERCOLATION RATE: P-1 4.1 MIN./INCH
APPLICATION RATE 1.48 GAL./FT.² DAY
FACTOR OF SAFETY 1.2
SOIL BORING (10' DEPTH)
PERCOLATION TEST HOLE (30" DEPTH)

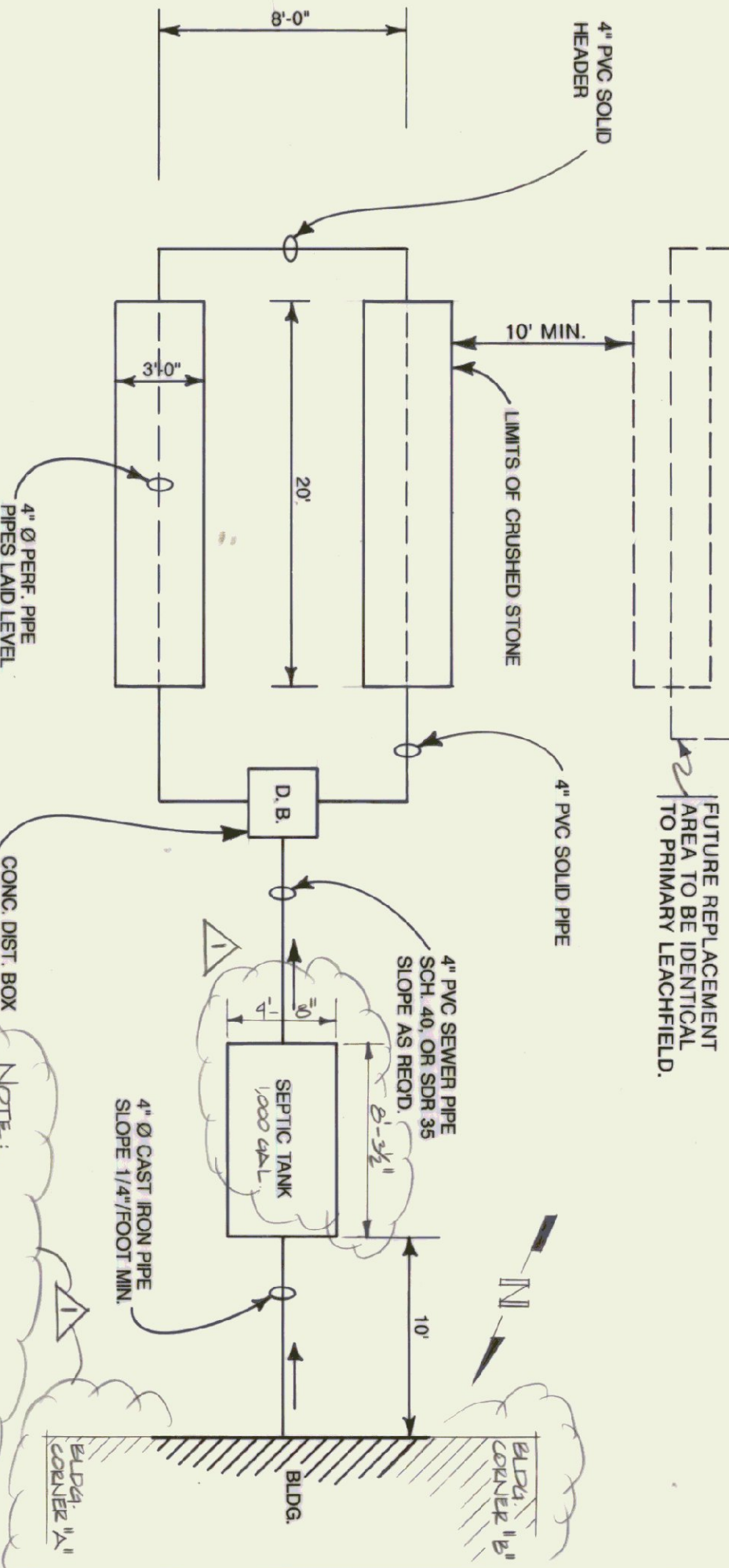
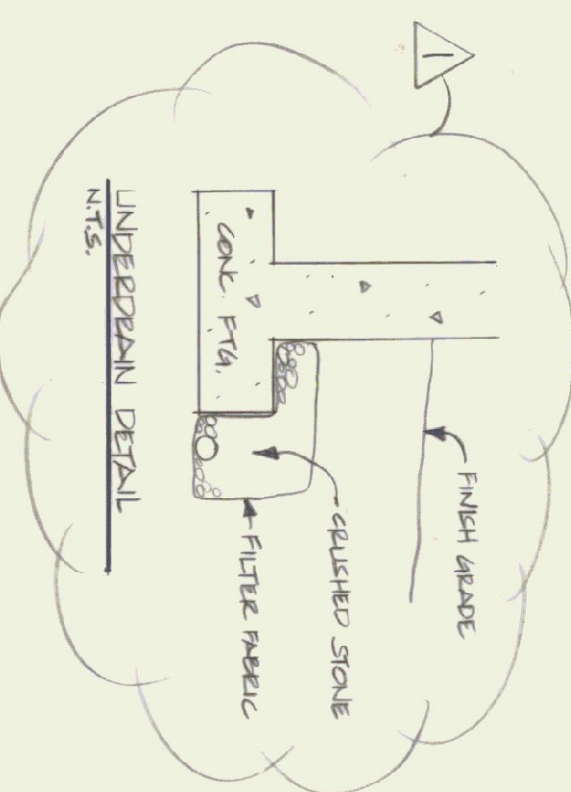
TEST HOLES DUG BY BACKHOE ON 11/15/94
* N.L.T.D. - NO LEUGE TO DEPTH



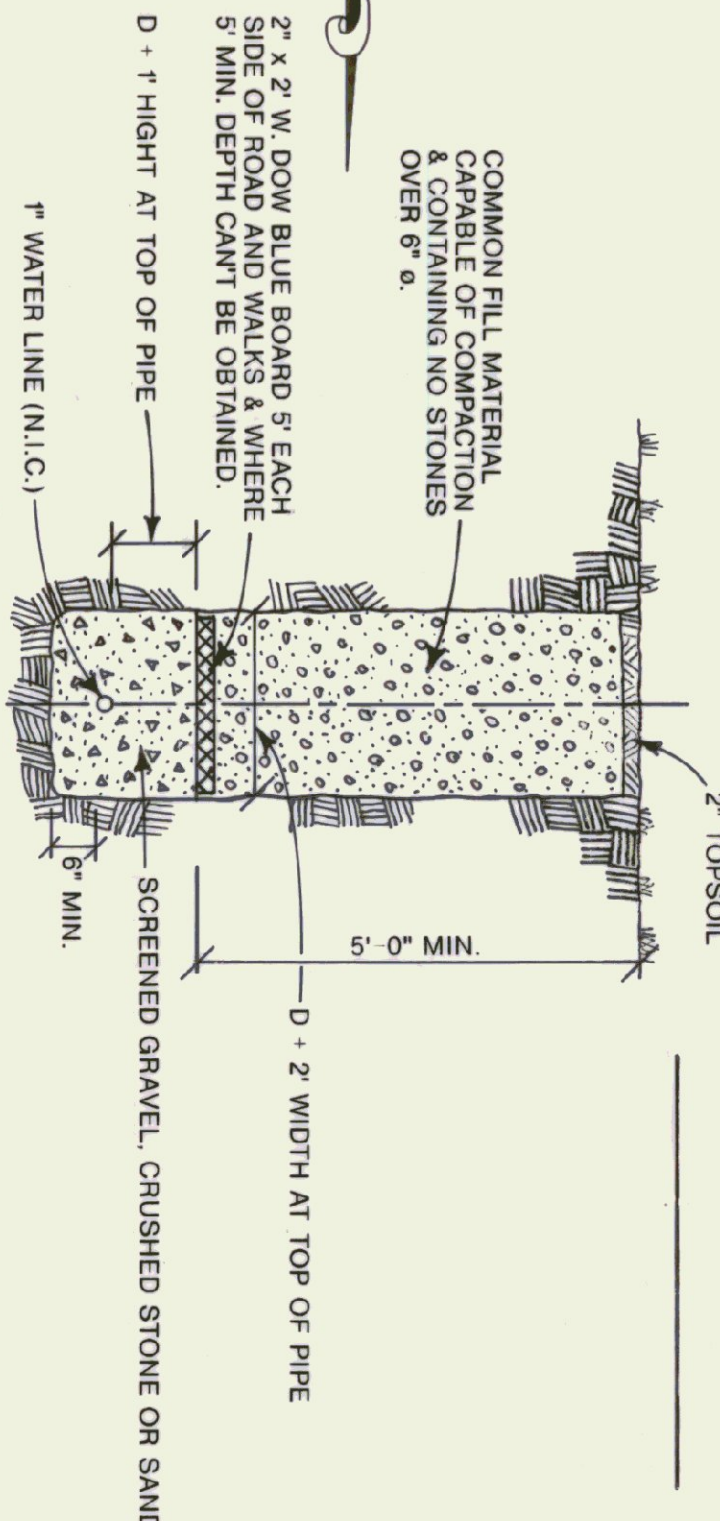
SCALE: 1" = 50'-0"

WELL LOCATION
STA. 15+40±
105' LT.

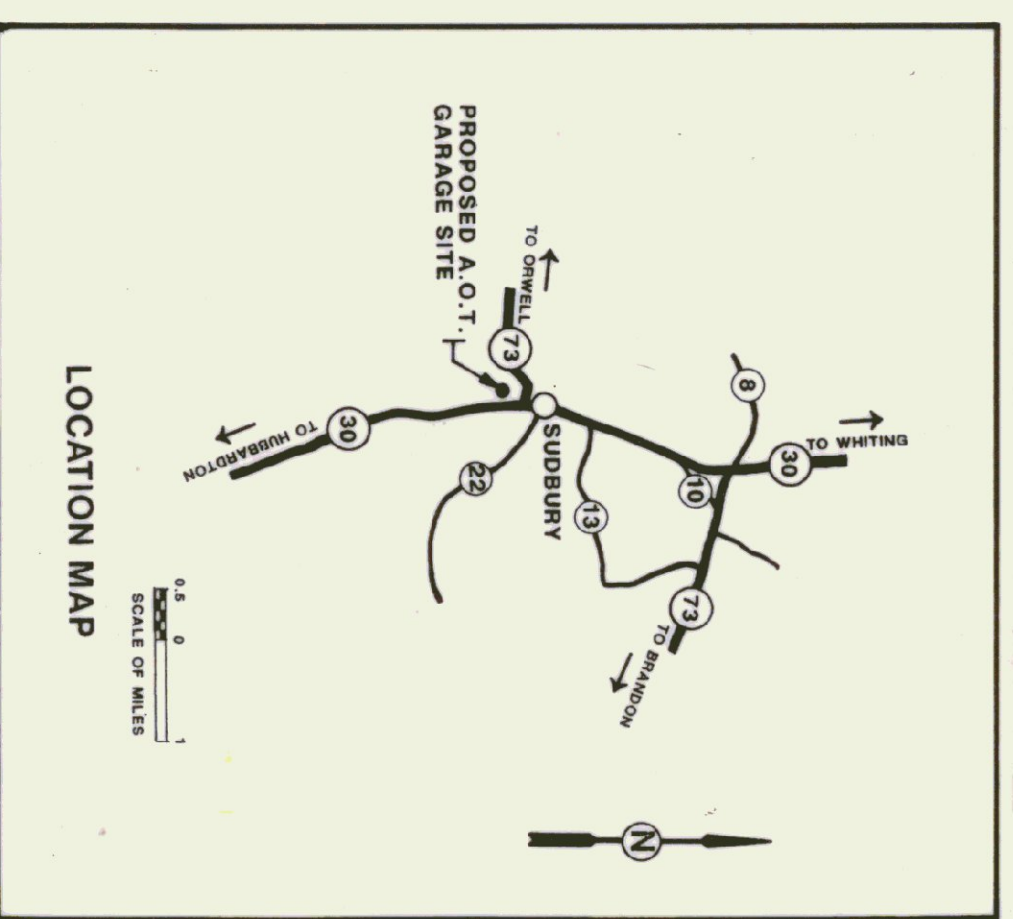
NOTE:
STATION 10+00 TO 18+65 ENTRANCE DRIVE AND
PARKING LOT CONSTRUCTION IS NOT IN CONTRACT



LEACH FIELD PLAN
NOT TO SCALE



WATER LINE DETAIL
SCALE: 1/2" = 1'-0"



AS BUILT

STATE OF VERMONT
DEPARTMENT OF STATE BUILDINGS
AGENCY OF ADMINISTRATION
MONTPELIER, VERMONT

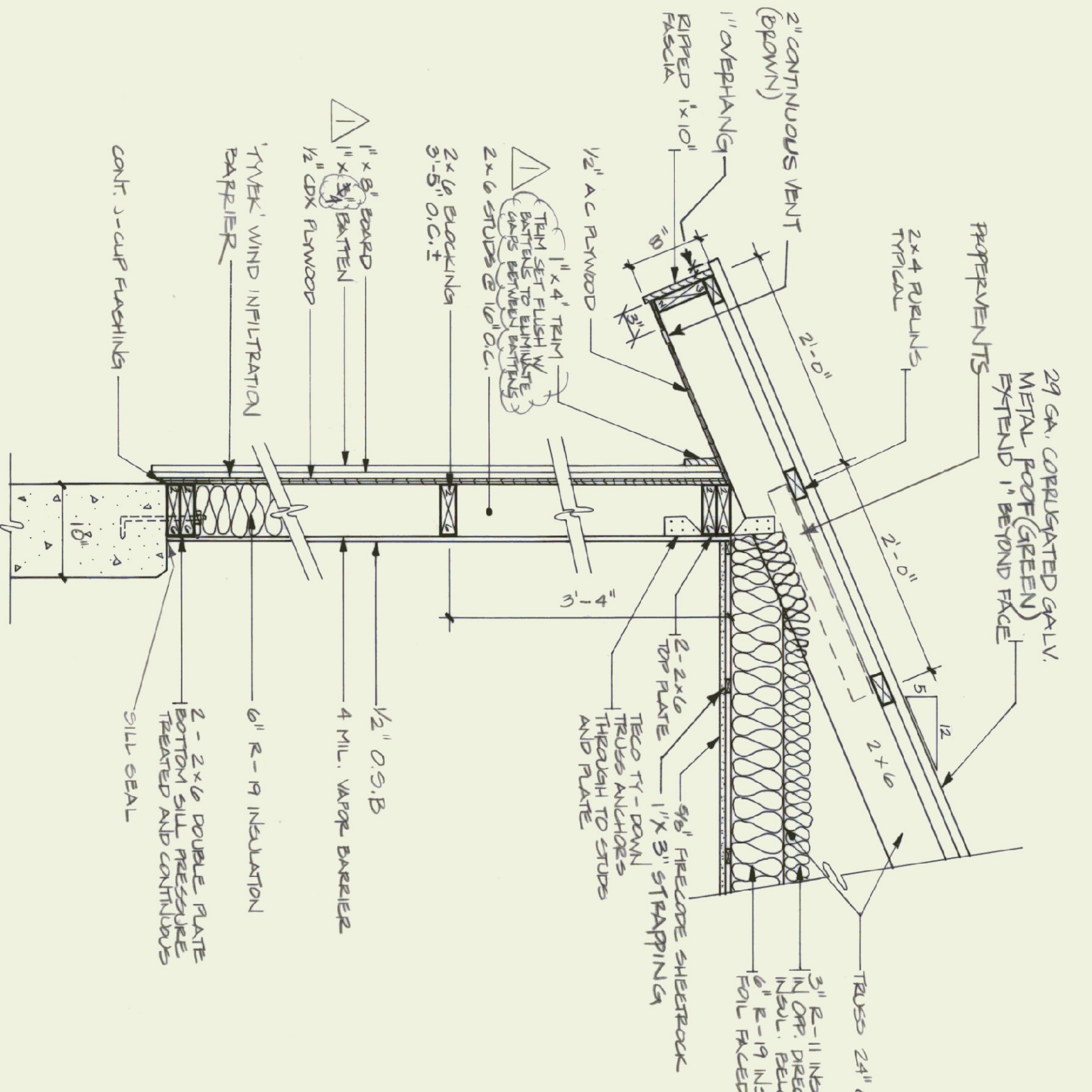
VERMONT AGENCY OF TRANSPORTATION
SITE PLAN
SUDBURY MAINTENANCE FACILITY
3 BAY GARAGE

DRAWING PREPARED FROM SURVEY DONE BY
VERMONT SURVEY AND ENGINEERING, INC.
(PROJECT NO. 13794)

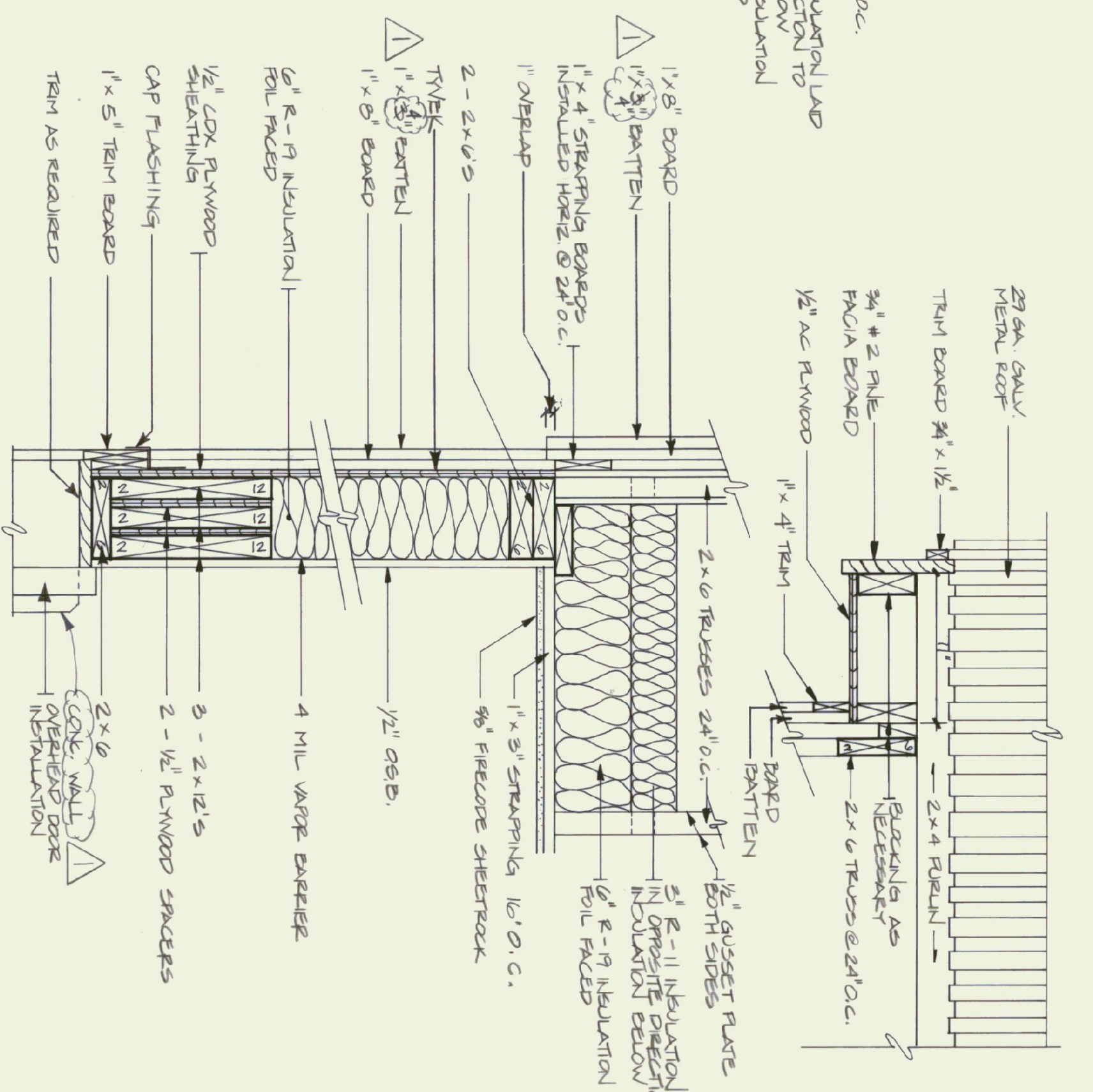
DATE	2/28/95	SCALE	1" = 50'-0"	DWG. NO.	SD-1
DESIGNED BY	A. POULIN	APPROVED BY	[Signature]	REVISED	2 OF 8



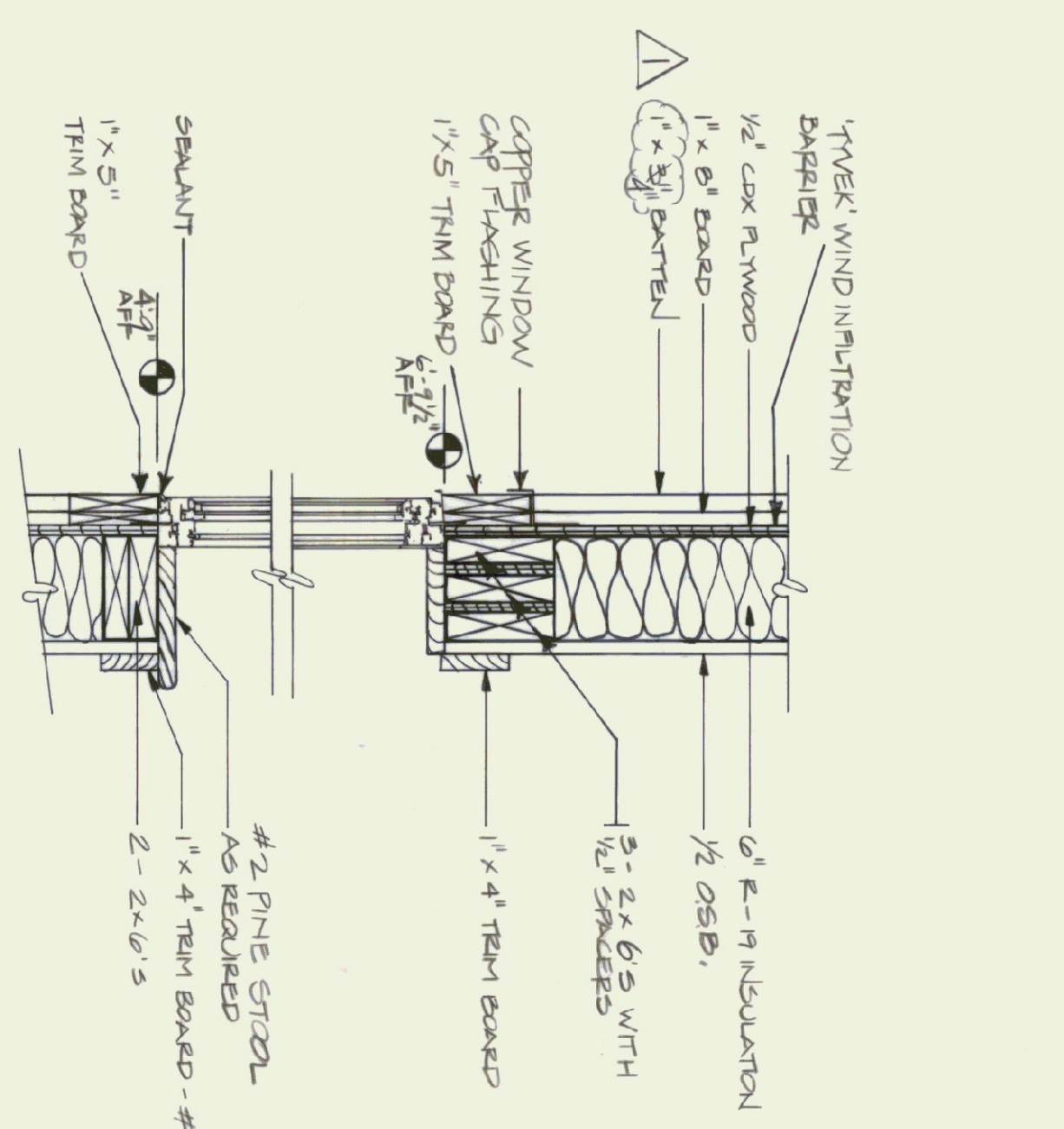
NOTE:
METAL CONTINUOUS
VENT AT RIDGE



**SECTION A - A
WALL SECTION**
SCALE: 1" = 1'-0"



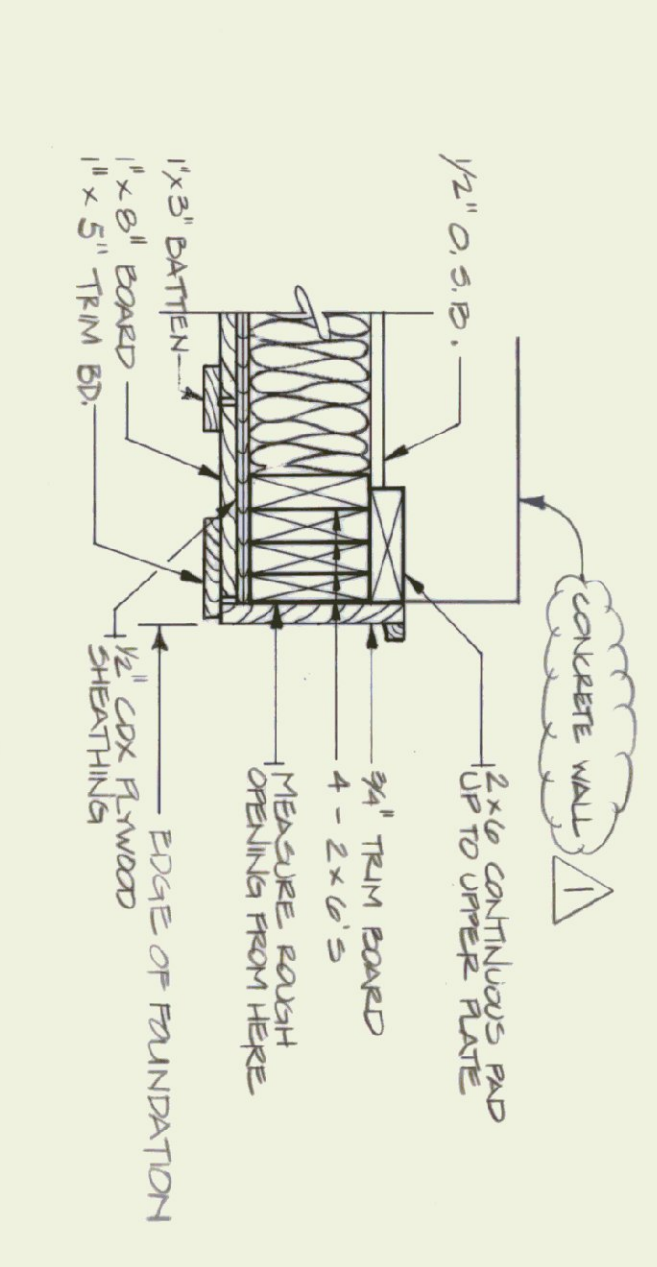
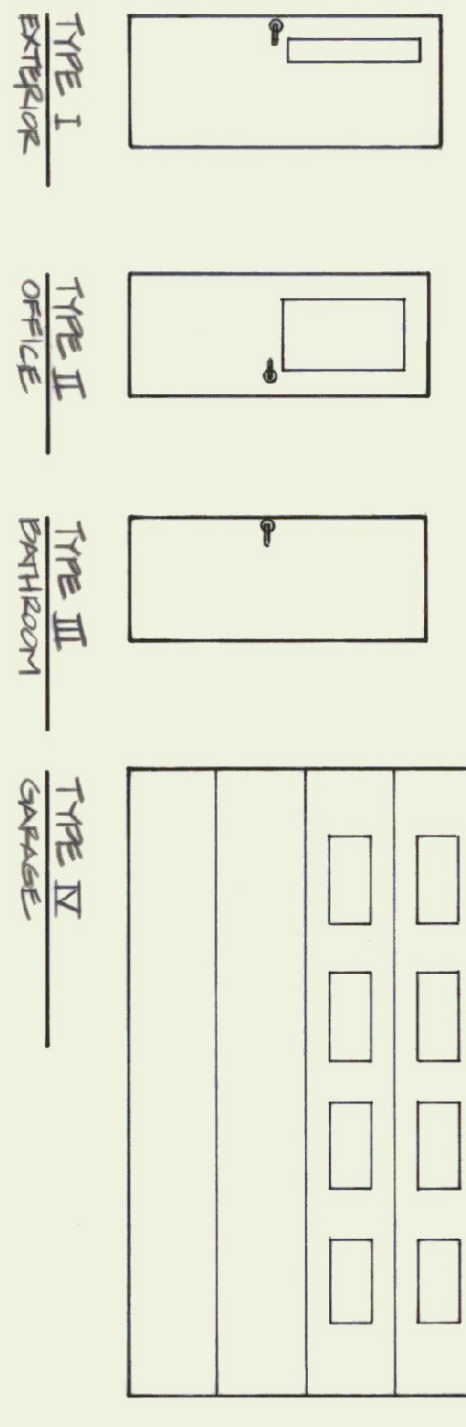
**SECTION B - B
HEADER DETAIL**
SCALE: 1 1/2" = 1'-0"



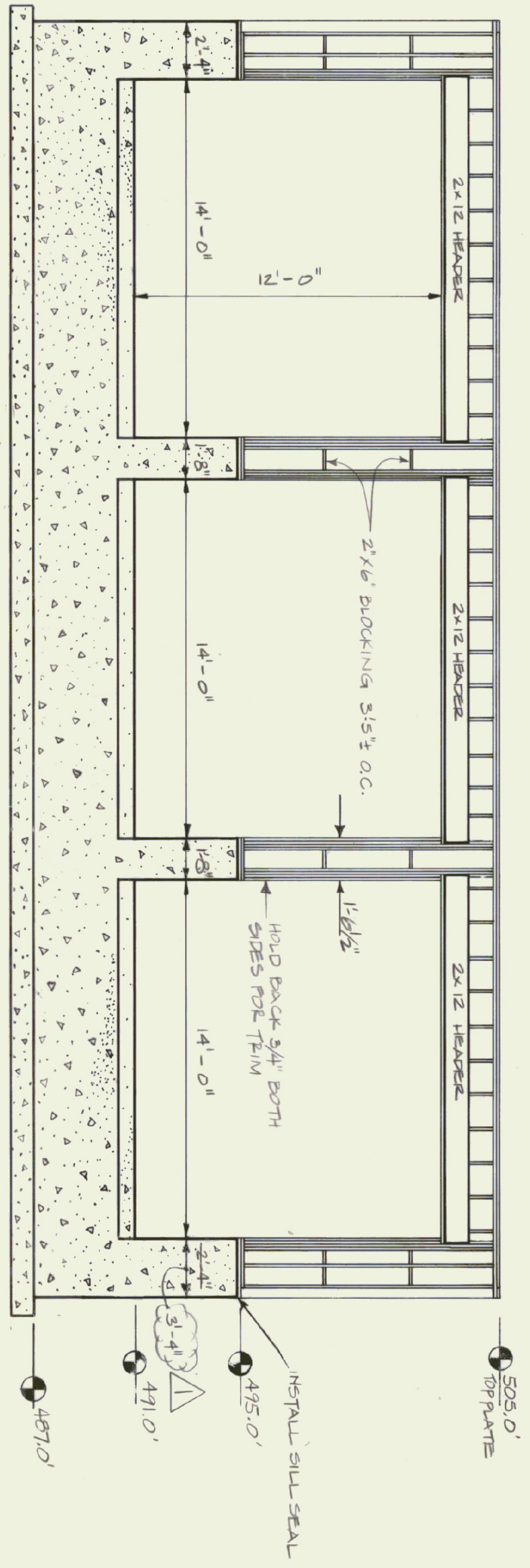
**SECTION C - C
WINDOW DETAIL**
SCALE: 1 1/2" = 1'-0"

DOOR SCHEDULE			
NO	QTY	SIZE	TYPE
1	1	3'-0" X 7'-0"	I
2	1	3'-0" X 7'-0"	II
3	1	3'-0" X 7'-0"	III
4	3	14'-0" X 12'-0"	IV

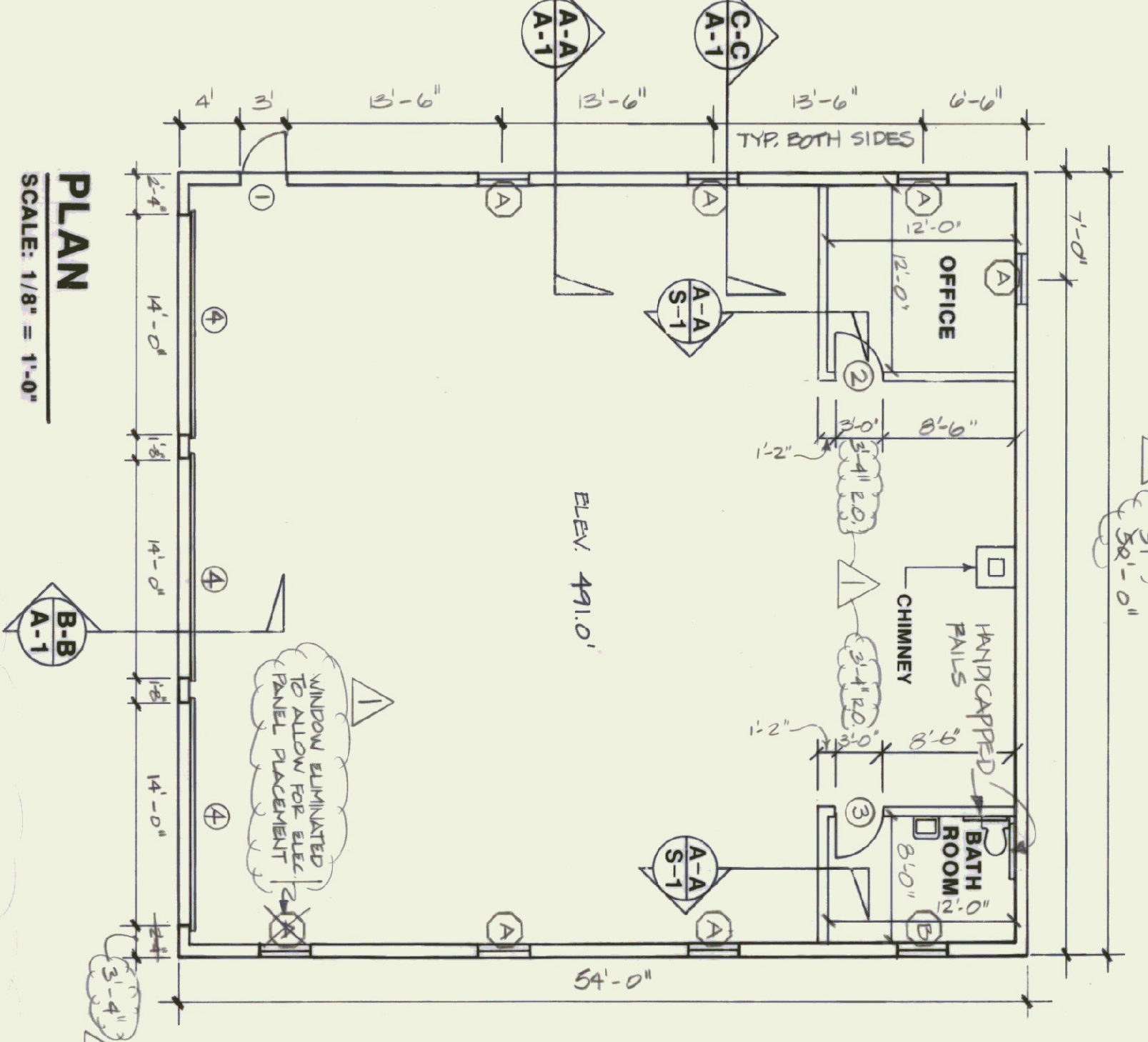
WINDOW SCHEDULE			
NO.	QTY	ROUGH OPENING	TYPE
A	1	3'-0" X 7'-0"	I
B	1	3'-0" X 7'-0"	II



OVERHEAD DOOR JAMB
SCALE: 1 1/2" = 1'-0"



SECTION @ OVERHEAD DOOR
SCALE: 1/4" = 1'-0"



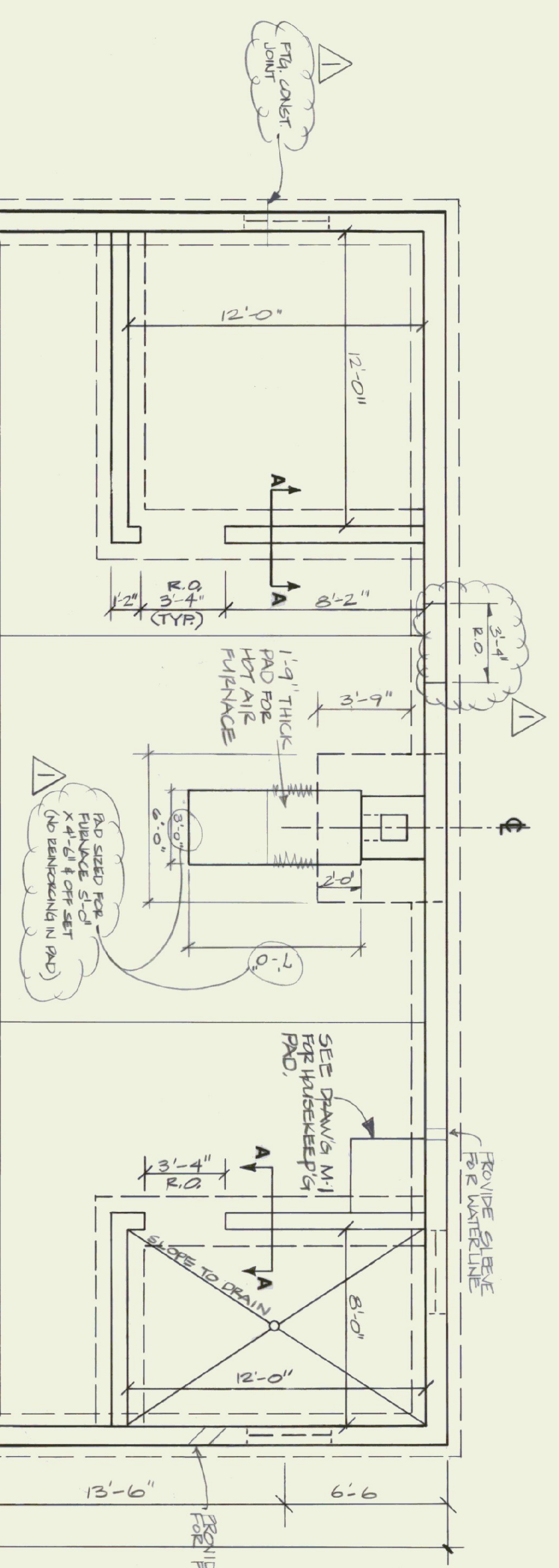
PLAN
SCALE: 1/8" = 1'-0"

STATE OF VERMONT
DEPARTMENT OF STATE BUILDINGS
AGENCY OF ADMINISTRATION
VERMONT

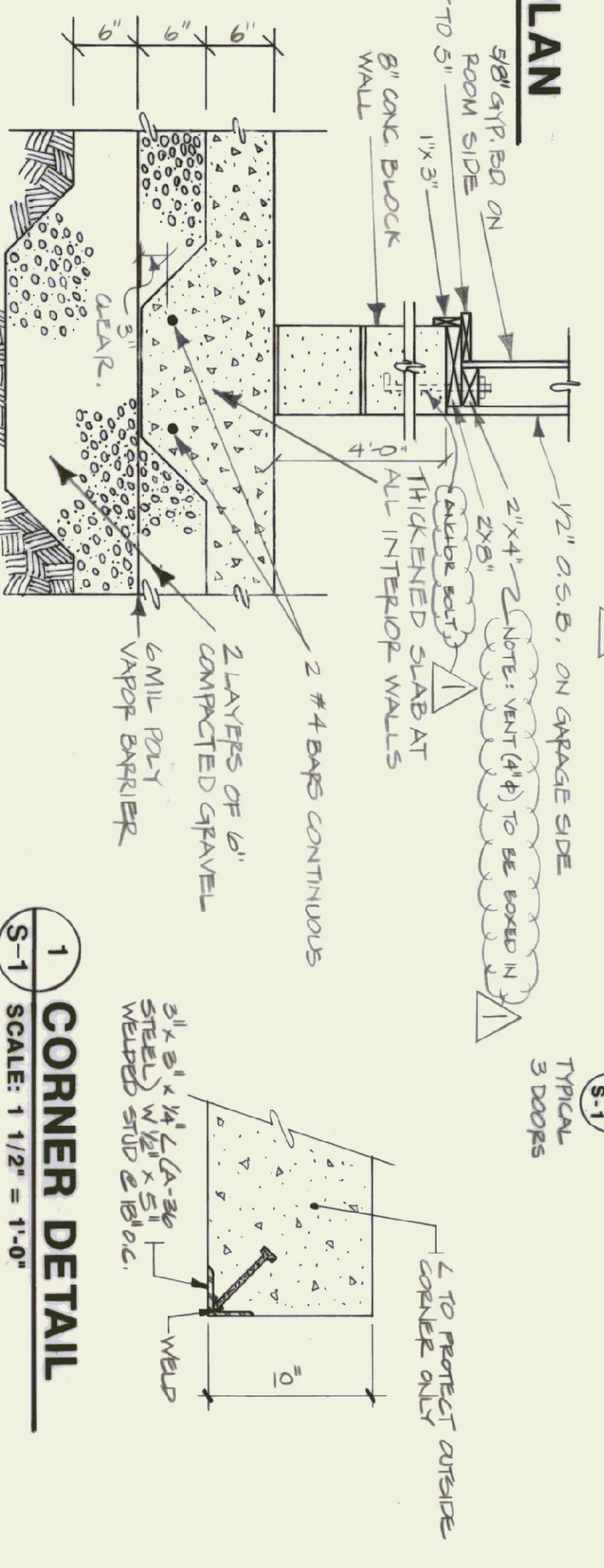
AGENCY OF TRANSPORTATION
PLAN & SECTIONS
SUBBURY MAINTENANCE FACILITY
3 BAY GARAGE

SUBBURY
DATE: April 21, 1995
DRAWN BY: A. POULIN
SCALE: AS NOTED
APPROVED BY: R. TREMBLAY

REVISIONS:
01/22/95 J.G.
DWG. NO. A-1
3 OF 8

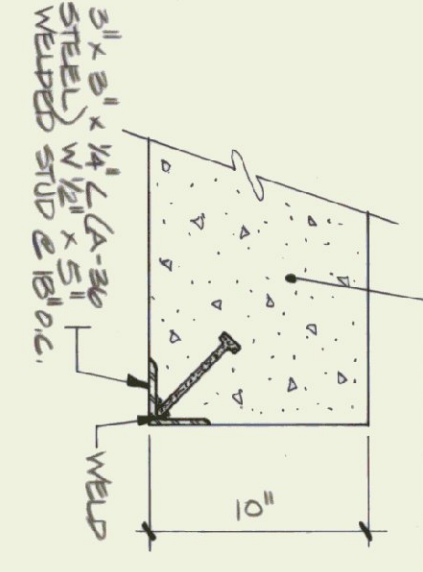


FOUNDATION PLAN
SCALE: 1/4" = 1'-0"

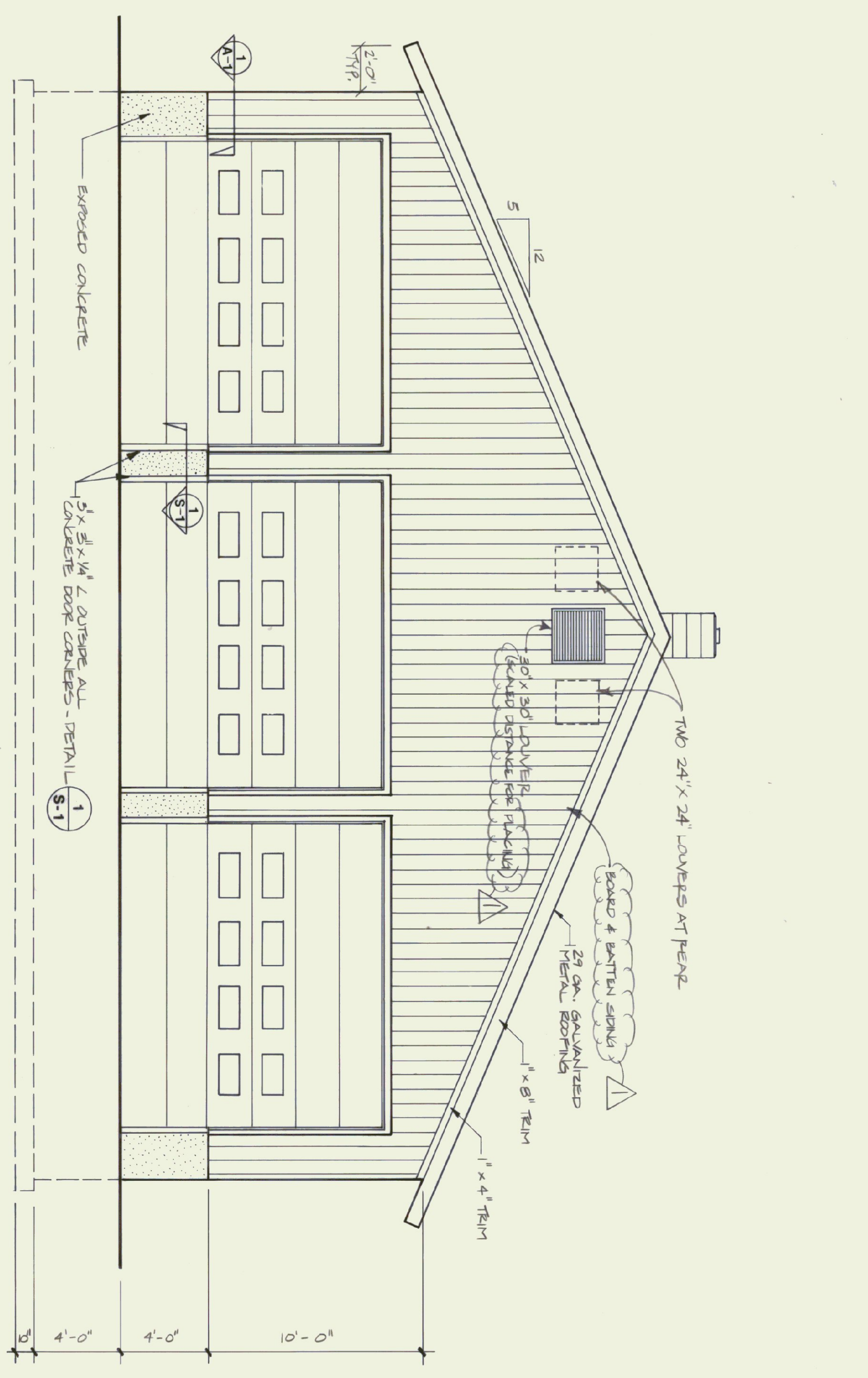


SECTION A-A
SCALE: 1" = 1'-0"

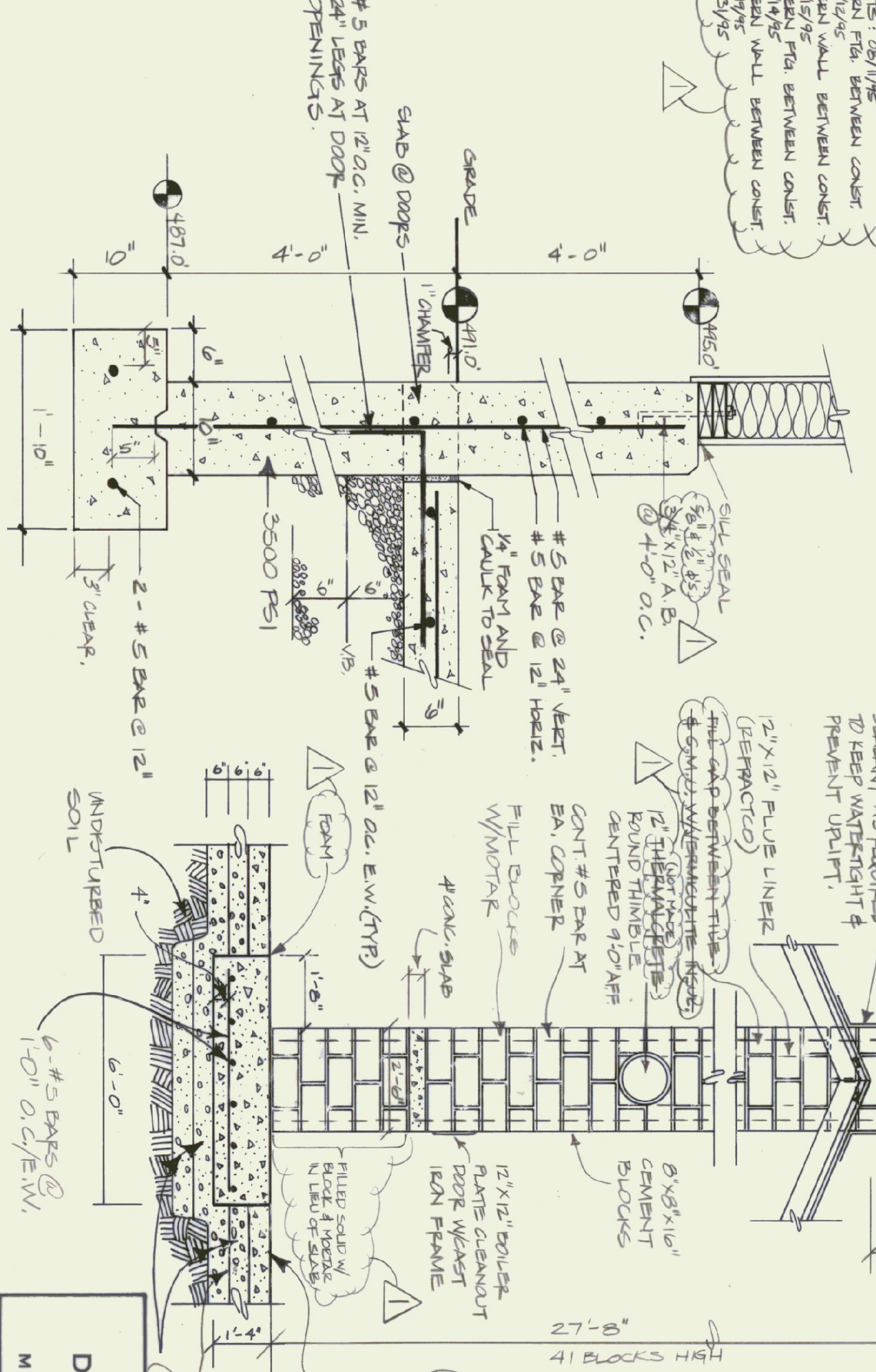
1 CORNER DETAIL
SCALE: 1 1/2" = 1'-0"



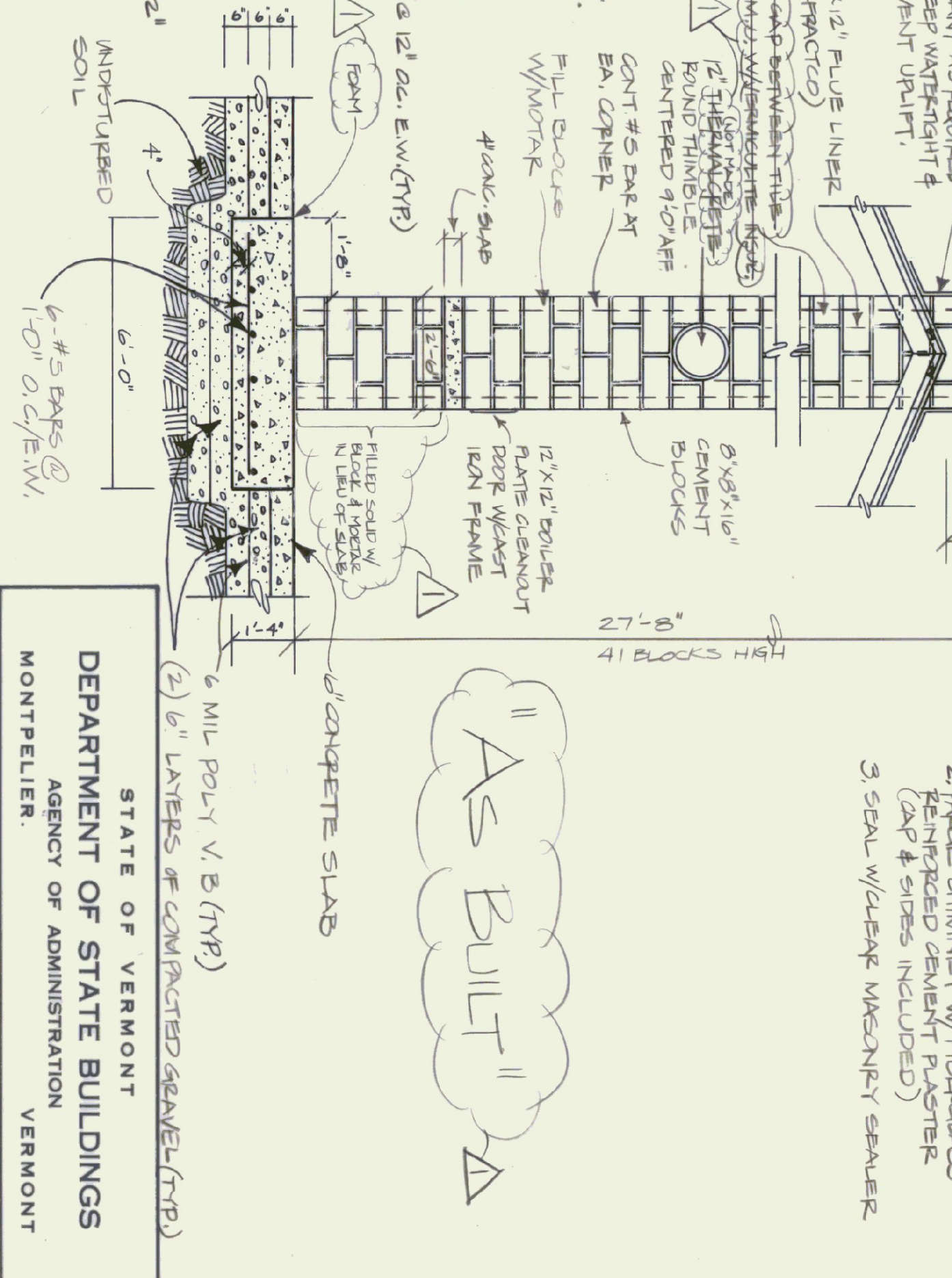
CONCRETE PLACEMENT
EASTERN PORTION OF FIBR BETWEEN
CONSTRUCTION JOINTS: 08/11/95
EASTERN PORTION OF WALLS BETWEEN
CONSTRUCTION JOINTS: 08/11/95
CONSTRUCTION JOINTS BETWEEN CONCR.
JOINTS: 08/11/95
NORTHWESTERN WALL BETWEEN CONCR.
JOINTS: 08/11/95
SOUTHWESTERN PORTION FIBR BETWEEN CONCR.
JOINTS: 08/11/95
SOUTHWESTERN WALL BETWEEN CONCR.
JOINTS: 08/11/95
SLAB: 08/11/95



FRONT ELEVATION
SCALE: 1/4" = 1'-0"



TYPICAL WALL/SLAB SECTION
SCALE: 1" = 1'-0"



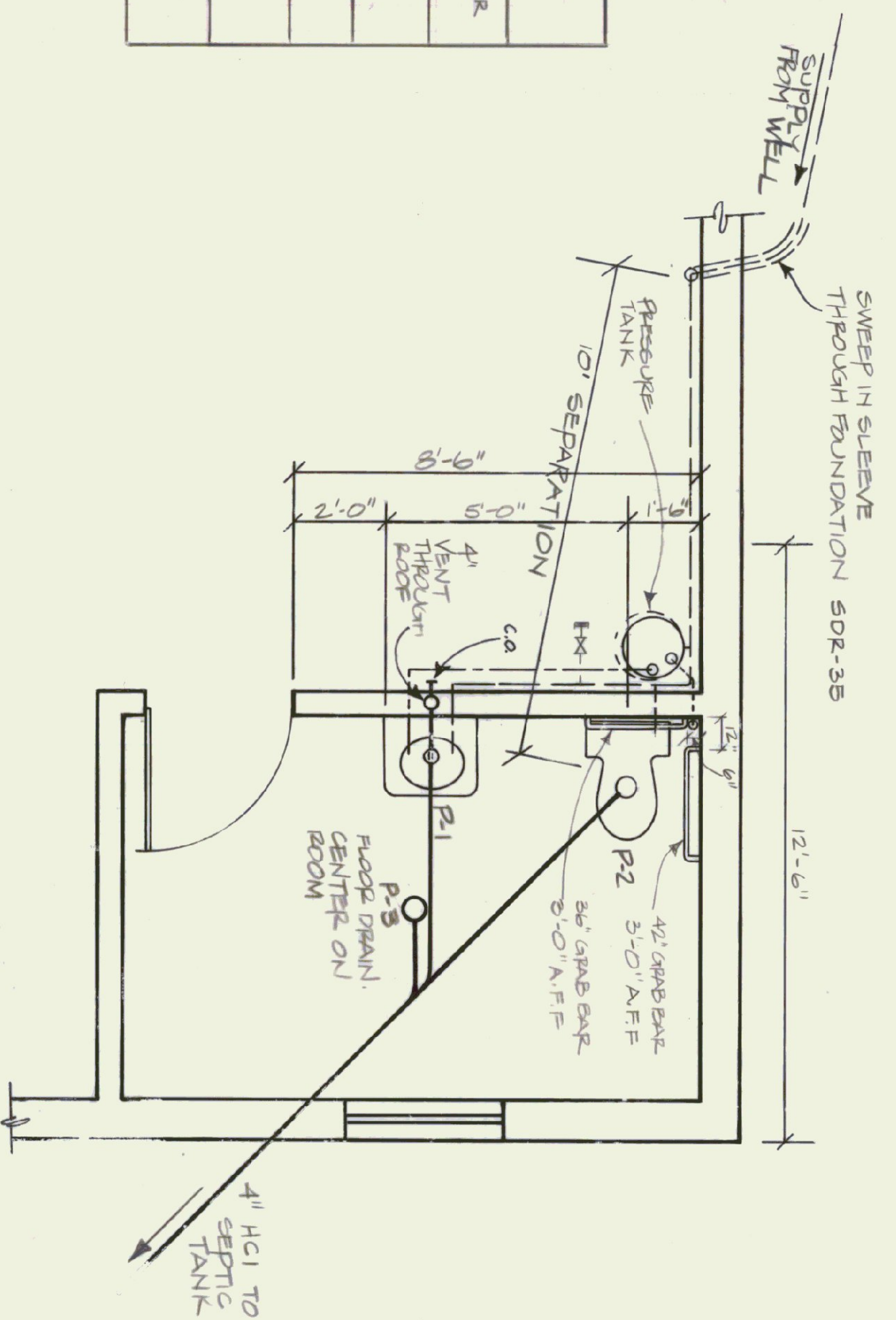
CHIMNEY ELEVATION
SCALE: 3/8" = 1'-0"

NOTE:
TO FINISH CHIMNEY AGENT
1. APPLY BRICKING
2. BRICK CHIMNEY W/ BRICKS
REINFORCED GEMENT PLASTER
(CAF # SIDES INCLUDED)
3. SEAL W/ CLEAR URETHANE SEALER

"As Built"

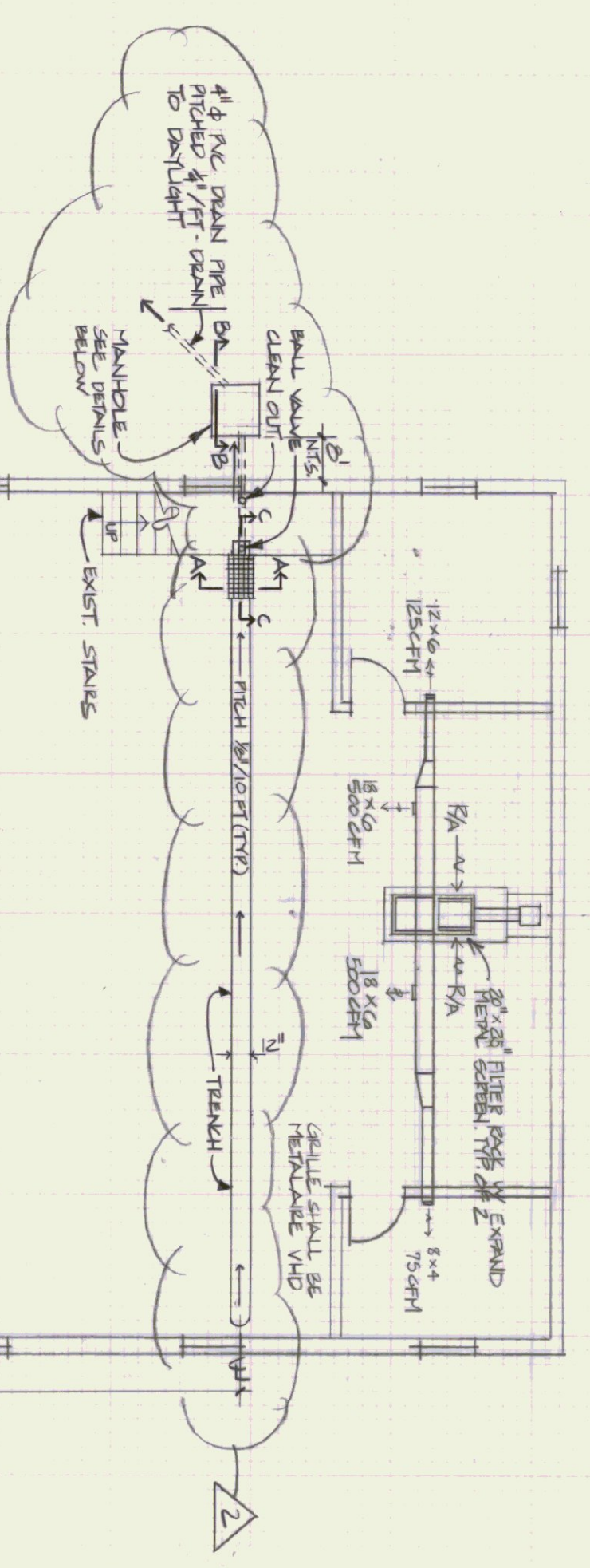
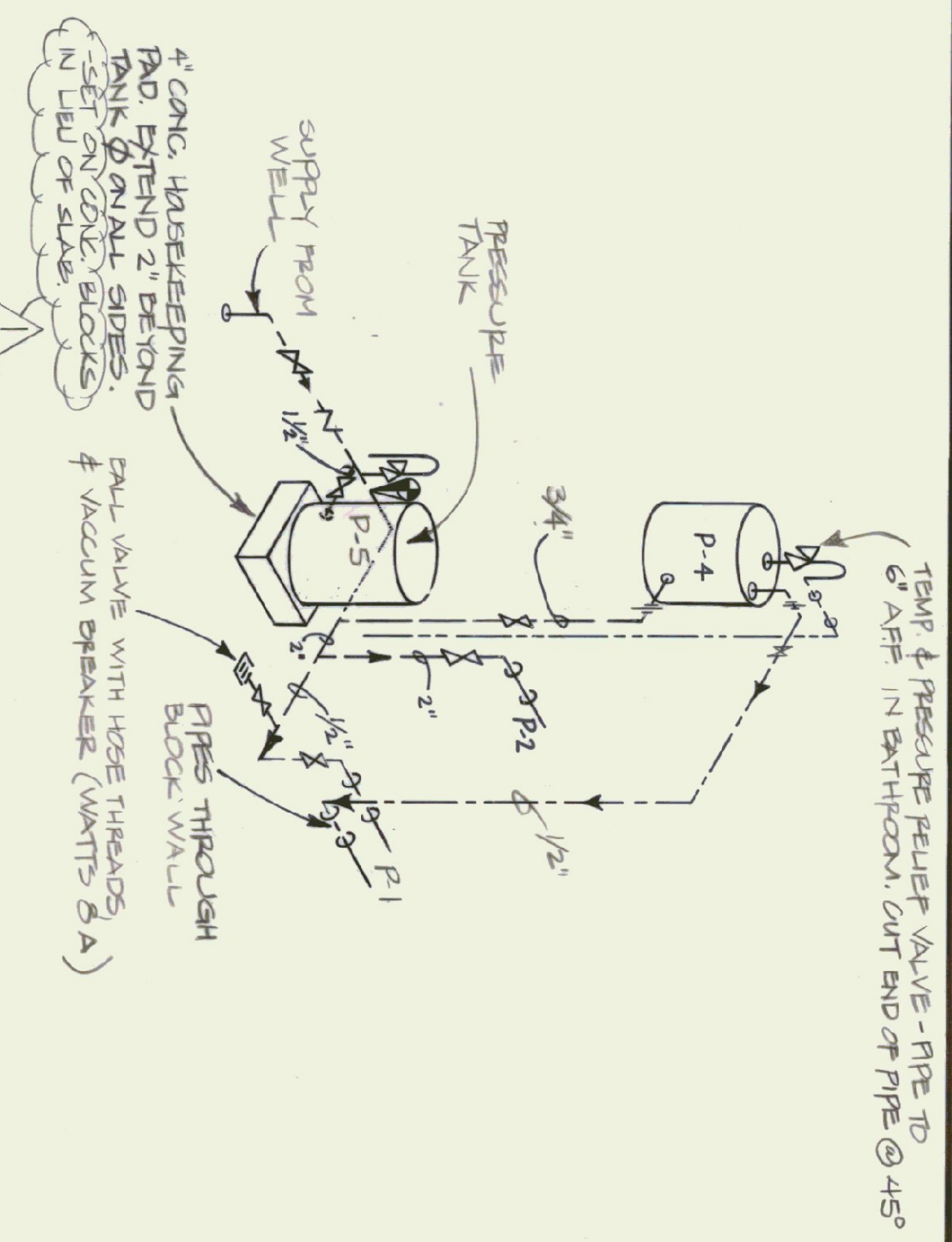
STATE OF VERMONT		DEPARTMENT OF STATE BUILDINGS	
AGENCY OF ADMINISTRATION		MONTPELIER, VERMONT	
AGENCY OF TRANSPORTATION			
FOUND. DETAILS & ELEVATION			
SUDBURY MAINTENANCE FACILITY			
3 BAY GARAGE			
SUBURBY	SCALE: AS NOTED	REVISED:	DWG. NO. S-1
DATE: April 21, 1995	APPROVED BY: A. POULIN	DATE: 07/26/95	4 OF 8
DRAWN BY: R. VERBAULT		VERMONT	

ITEM	FIXTURE	MAKE/MODEL	ROUGH-IN			REMARKS	
			HOT	COLD	WASTE		VENT
P-1	LAVATORY	AMERICAN STANDARD 0555.012	1/2"	1/2"	4"	4"	PROVIDE AFS #2385.131 FAUCET AND BRID STRAINER PROVIDE OFFSET DRAIN! WALL HANGER MOUNT RM AT 5' AFF
P-2	TOILET	AMERICAN STANDARD 3043.102	-	1/2"	4"	-	PROVIDE CHURCH #9400 KC SEAT SUON III FLUSH VALVE
P-3	FLOOR DRAIN	-	-	-	4"	-	PROVIDE NICKEL SLOTTED COVER
P-4	WATERHEATER	BRADFORD-WHITE M-1-6USS	3/4"	3/4"	-	-	PROVIDE P4 T RELIEF VALVE PIPED TO 6" A.F.F.
P-5	PRESSURE TANK	-	-	-	-	-	SUPPLIED BY WELL CO.



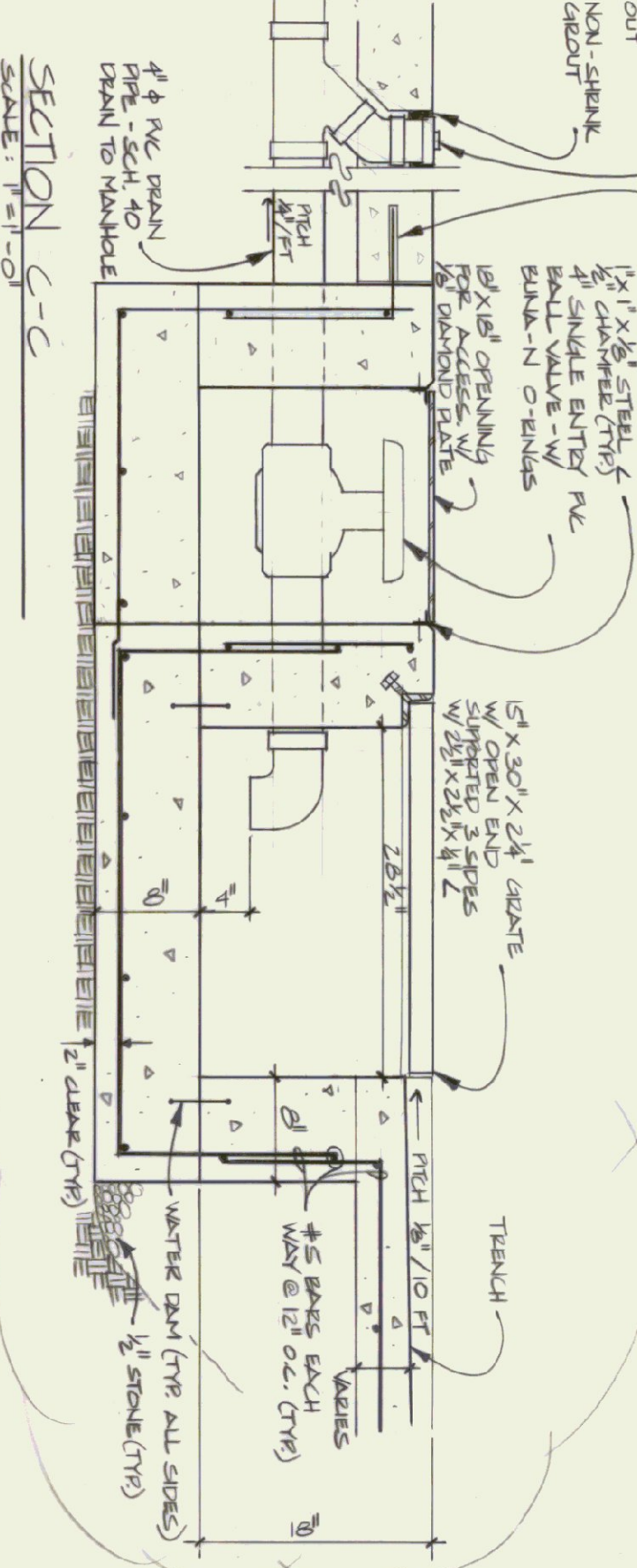
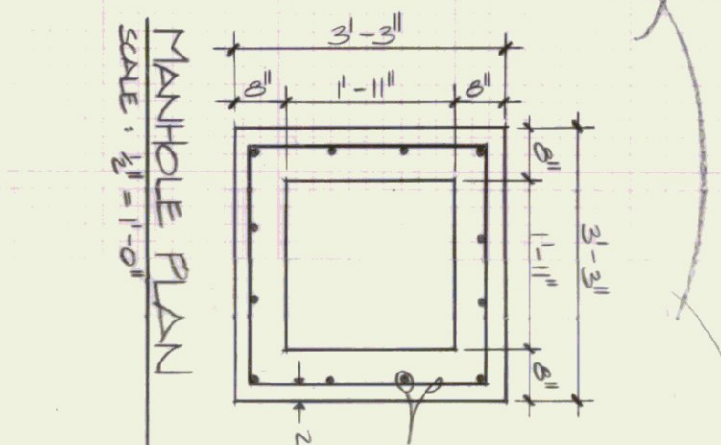
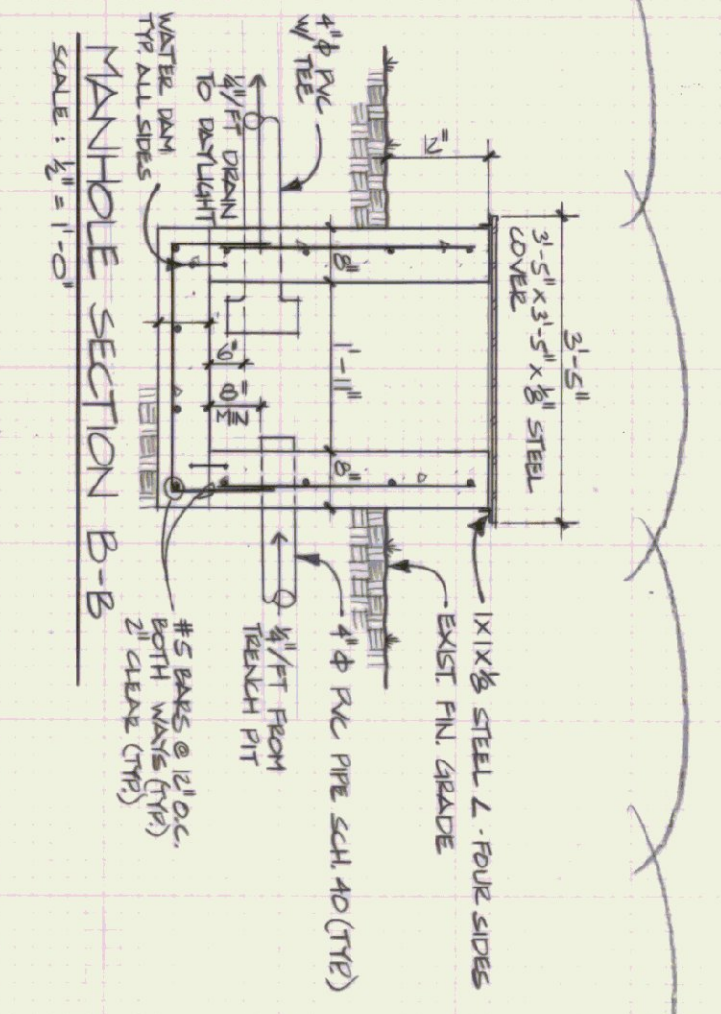
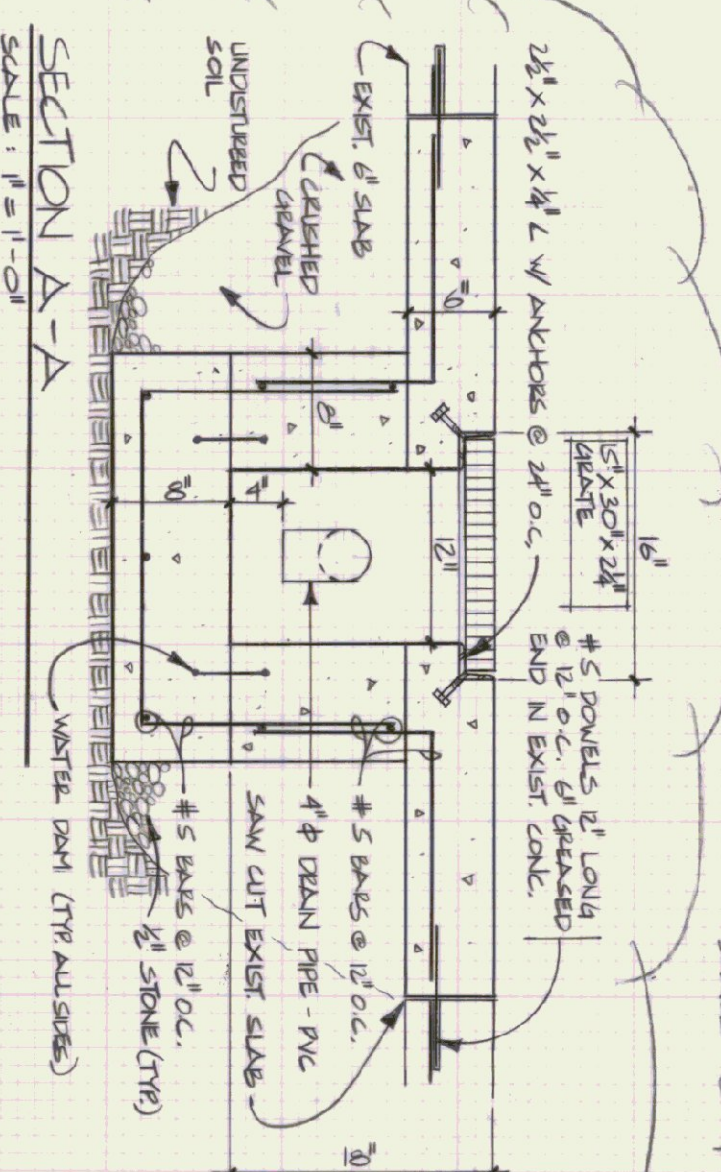
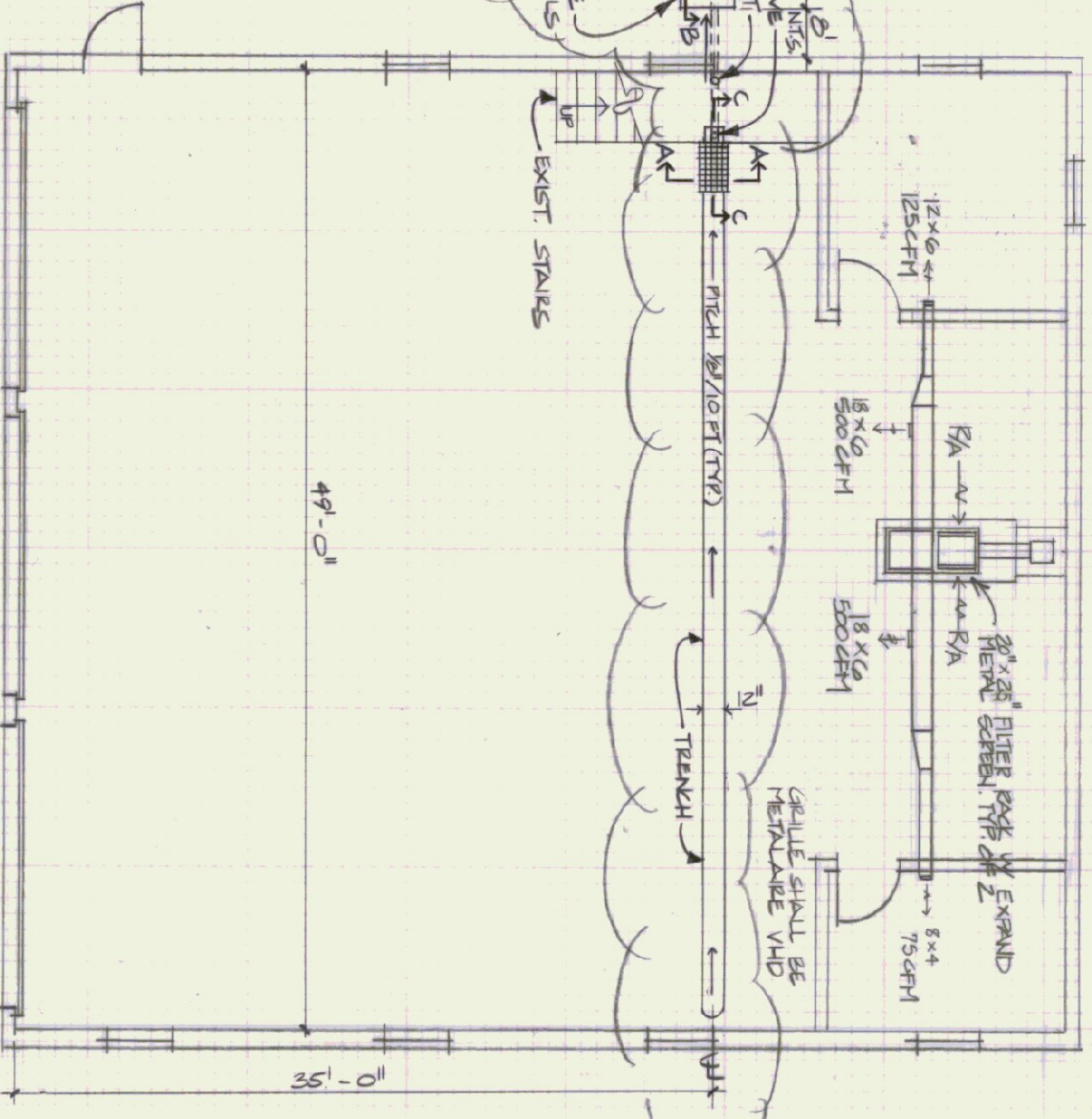
BATHROOM PLUMBING PLAN
SCALE: 3/8" = 1'-0"

HOT & COLD WATER RISER DIAGRAM
NOT TO SCALE



SANITARY WASTE & VENT RISER DIAGRAM
NOT TO SCALE

HEATING DRAWING
SCALE: 1/8" = 1'-0"



AS BUILT

STATE OF VERMONT
DEPARTMENT OF STATE BUILDINGS
AGENCY OF ADMINISTRATION
VERMONT

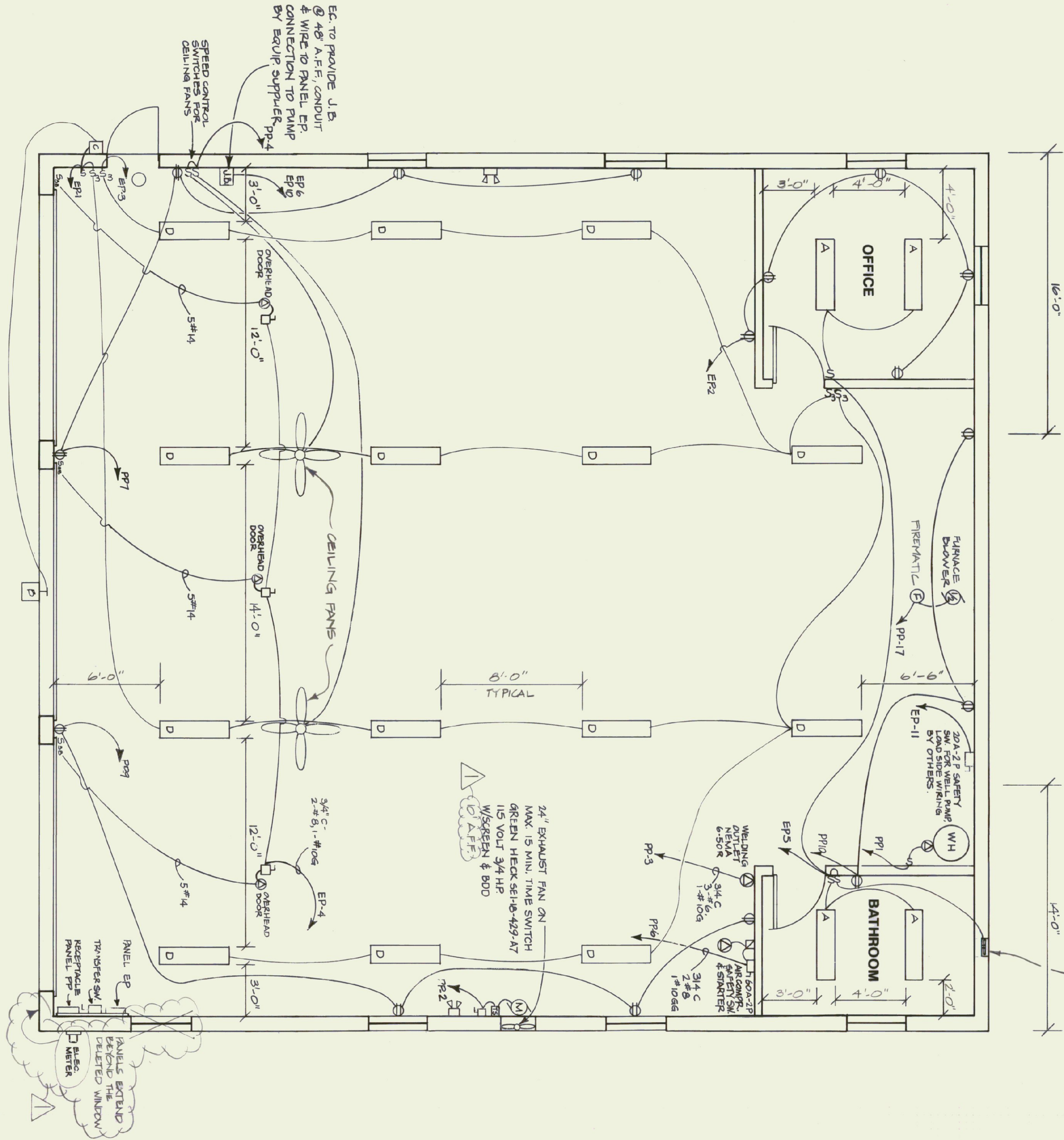
AGENCY OF TRANSPORTATION
MECHANICAL PLAN
SUBBURY MAINTENANCE FACILITY
3 BAY GARAGE

DATE: April 21, 1995
DRAWN BY: A. POULIN
SCALE: AS NOTED
APPROVED BY: [Signature]

REVISIONS:
1. G.A. APPROVED
2. G.A. APPROVED

DWG. NO. M-1
5 OF 8

100 CFM EXHAUST FAN @ 1'-0" A.F.F. BRANN SOF WITH BUILT-IN BACK DRAFT DAMPER & OUTSIDE WEATHER HOOD



ELECTRICAL PLAN
SCALE: 1/4" = 1'-0"

ELECTRICAL FIXTURE SCHEDULE

KEY	MANUFACTURER & MODEL	MOUNTING	LAMPS	VOLTAGE	REMARKS
A	Columbia WC 240 A Elec/OCT 120	Surface	2-F32WB/SF35	120	Electronic Ballast
B	Spaulding A-CVI-100-HPS-FG-VG-WBS	15' A.F.F.	100W - HPS	120	Photo Cell
C	Spaulding MRR-35-HPS-FC	Wall 8' A.F.F.	35W-HPS	120	Photo Cell
D	Columbia CSR 248-HO-1	Surface	2-F40T12H0/W/W/Spacer	120	Low Temp. Ballast
F	Stanco VCX121GC	Surf - Ceiling	150 -A-	130	
G	Stanco 150L & CAR. #80 Wire Guard	Surface Ceiling	150W-PAR-FL	130	WP Cast Box

ELECTRICAL SYMBOLS

- ① - Single duplex receptacle, 20 AMP-125 V CMT # 5362, Hubbell
- ② - Single receptacle 20 AMP - 125 V CMT # 5062, Hubbell, Ceiling Mounted
- S3 - Three Way Switch 20 AMP 120-277V # 1223 Hubbell
- S3B - Three Button 24V Control switch supplied with door opening system
- WP - Weather proof

PANEL DESIGNATORS

PANEL: PP
MOUNTING: SURFACE
MAINS: 200 Amp - 2 Pole - MCB, 120/240 Volt, 1 Phase, 3 Wire
BRANCHES: AS SHOWN
CONNECTED LOAD: 35 KW

UL LABELED FOR SERVICE ENTRANCE

CKT NO.	KW LOAD	DESCRIPTION	BREAKER		DESCRIPTION	KW LOAD	CKT NO.	
			P AMP	P AMP				
1	1.0	WATER HEATER	1	20	1	EXHAUST FAN	2	
3	10.0	WELDING OUTLET	2	50	1	CEILING FANS	4	
5	-	-	80	2	2	AIR COMPRESSOR	6	
7	5	RECEPTACLES	GH	15	-	-	8	
9	5	RECEPTACLES	GH	50	GH	1	RECEPTACLES	10
11	1.4	RECEPTACLES	GH	20	GH	1	SPARE	12
13	9.6	PANEL EP	2	60	20	1	SPARE	14
15	-	-	-	20	1	SPARE	16	
17	-	WOOD FURNACE	1	20	-	-	18	
19	-	SPACE	-	-	-	-	20	
21	-	SPACE	-	-	-	-	22	
23	-	SPACE	-	-	-	-	24	
25	-	SPACE	-	-	-	-	26	
27	-	SPACE	-	-	-	-	28	
29	-	SPACE	-	-	-	-	30	
31	-	SPACE	-	-	-	-	32	
33	-	SPACE	-	-	-	-	34	
35	-	SPACE	-	-	-	-	36	
37	-	SPACE	-	-	-	-	38	
39	-	SPACE	-	-	-	-	40	

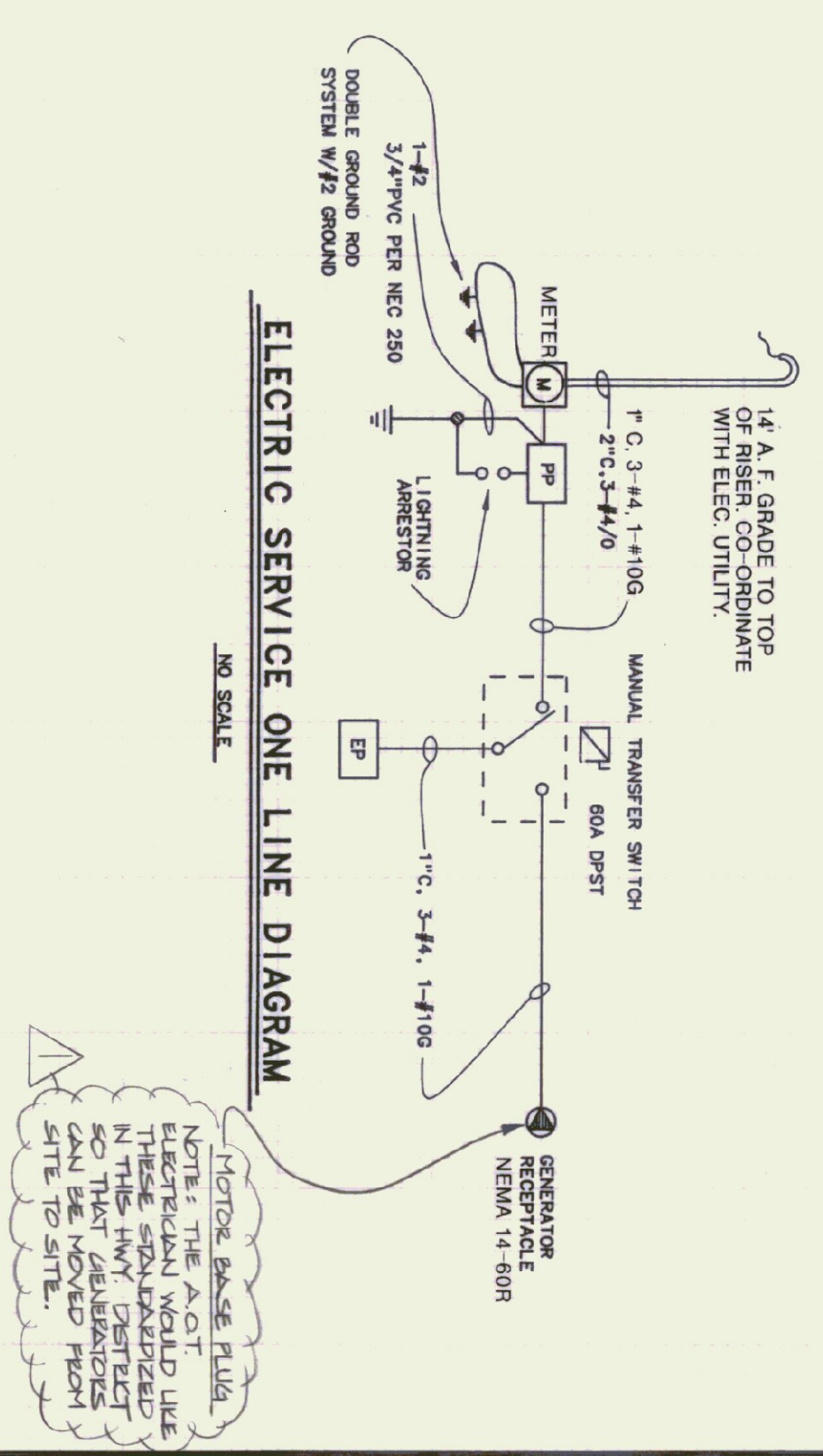
PANEL DESIGNATORS

PANEL: EP
MOUNTING: SURFACE
MAINS: 80 A - 2 P - MCB, 120/240 V, 1 PH, 3 W
BRANCHES: AS SHOWN
CONNECTED LOAD: 9.6 KW

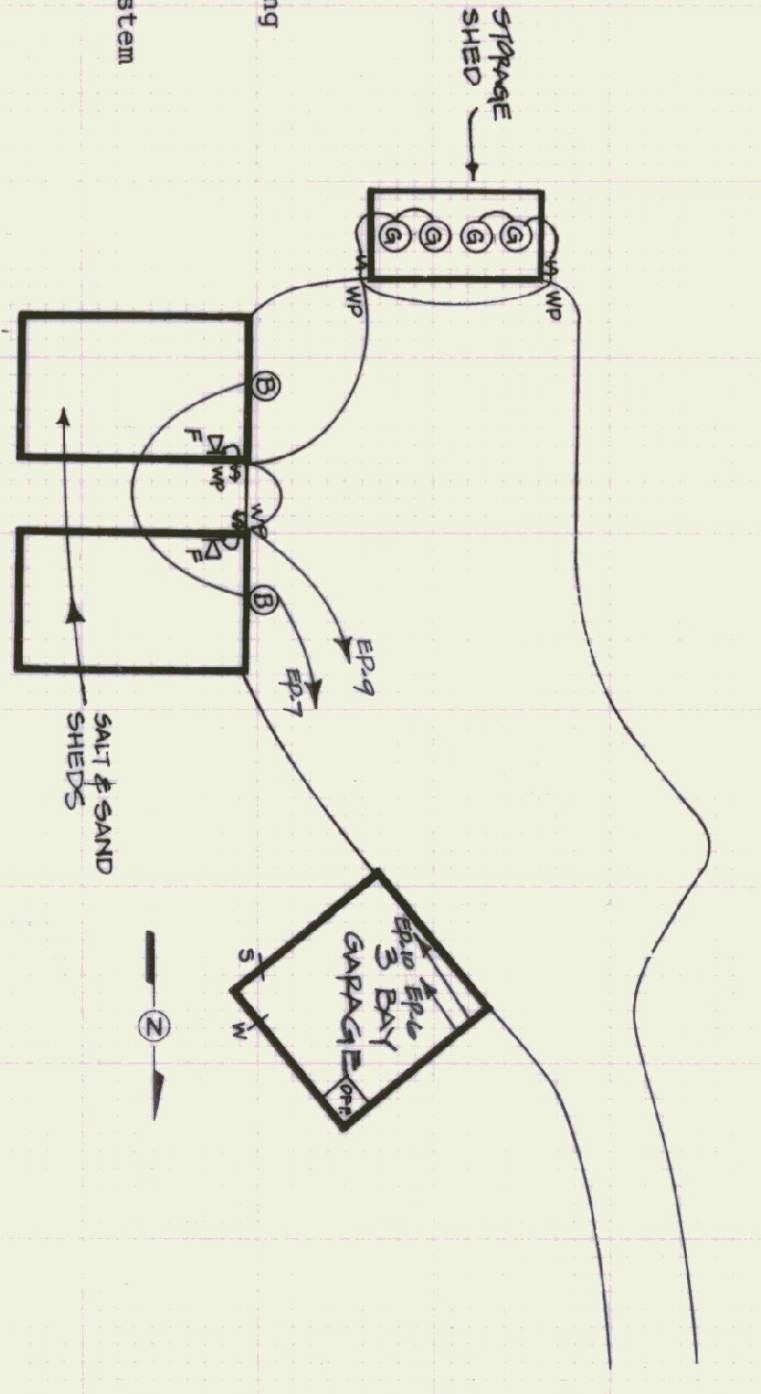
CKT NO.	KW LOAD	DESCRIPTION	BREAKER		DESCRIPTION	KW LOAD	CKT NO.		
			P AMP	P AMP					
1	7	LIGHTING	1	20	1	RECEPTACLES	1.0	2	
3	8	LIGHTING	1	20	40	1	OVERHEAD DRS.	1.5	4
5	4	LIGHTING	1	20	20	1	FUEL PUMP LIGHT	1.0	6
7	8	EXT SHED LIGHTS	1	20	-	-	(NEUTRAL DISC)	5	8
9	6	INT SHED LIGHTS	1	20	20	2	FUEL PUMP	1.5	10
11	5	WATER PUMP	2	20	-	-	-	12	
13	-	-	-	-	-	-	(NEUTRAL DISC)	-	14
15	-	SPACE	1	20	-	-	SPACE	16	
17	-	SPACE	1	20	-	-	SPACE	18	
19	-	SPACE	-	-	-	-	SPACE	20	
21	-	SPACE	-	-	-	-	SPACE	22	
23	-	SPACE	-	-	-	-	SPACE	24	

NOTES

- All branch circuit runs surface mounted in EMT minimum 4' above floor with suitable boxes & covers.
- All outlets & switches at all locations shall be at least 48" A.F.F.
- All wiring to moving or vibrating equipment to be in Greenfield conduit.
- Install ground wire & rod in accordance with local power company specifications.
- Provide plywood panel 3/4" thick with 2 coats of grey paint and 3/4" spacers for main distribution panel with main breaker. See Section 06100-2.
- Panel shall be SOD N00B 120/240V Single phase 3 wire 200 AMP main 10/000 ICR breakers 20 poles with piano cover or approved equal.



ELECTRIC SERVICE ONE LINE DIAGRAM
NO SCALE



PARTIAL SITE PLAN
SCALE: 1" = 50'-0"

AS BUILT

STATE OF VERMONT
DEPARTMENT OF STATE BUILDINGS
AGENCY OF ADMINISTRATION
VERMONT

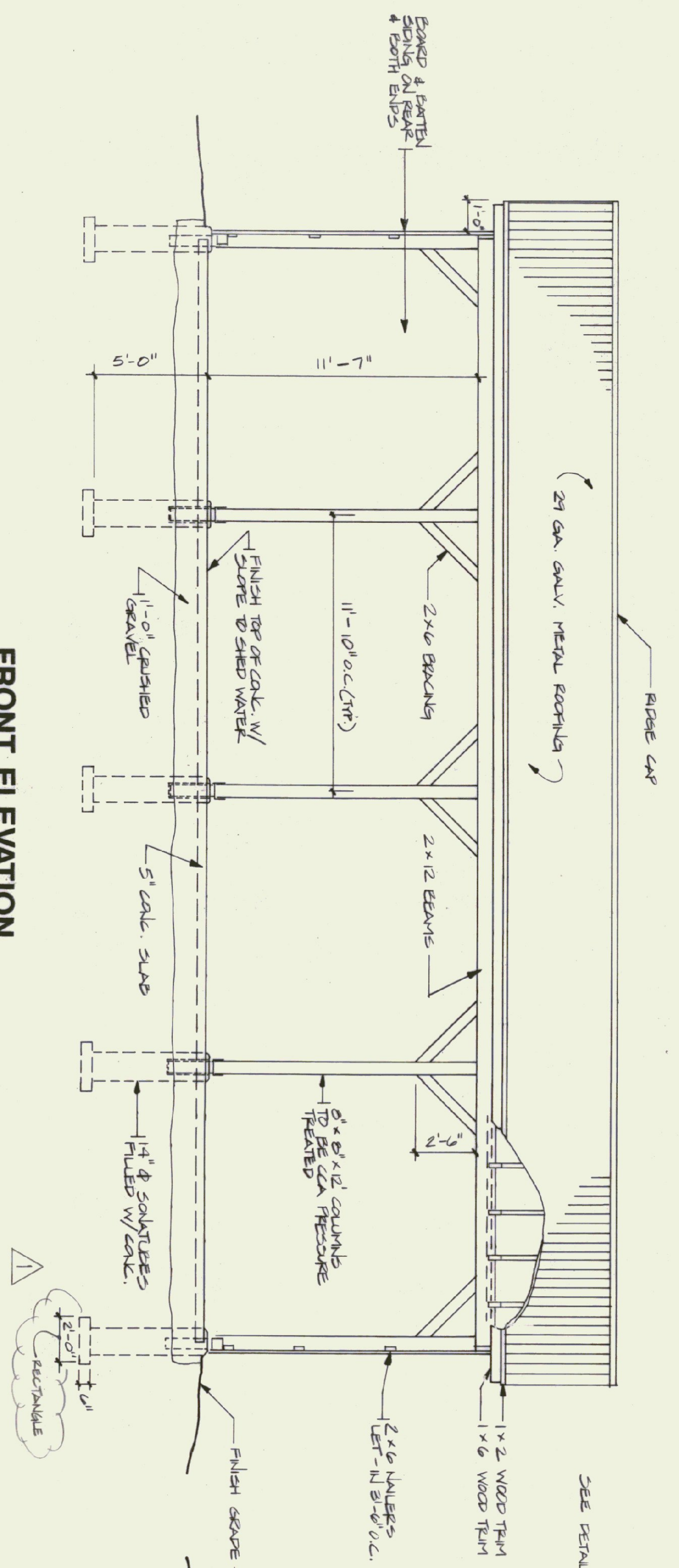
VERMONT AGENCY OF TRANSPORTATION
SUBBURY MAINTENANCE FACILITY
3 BAY GARAGE

VERMONT

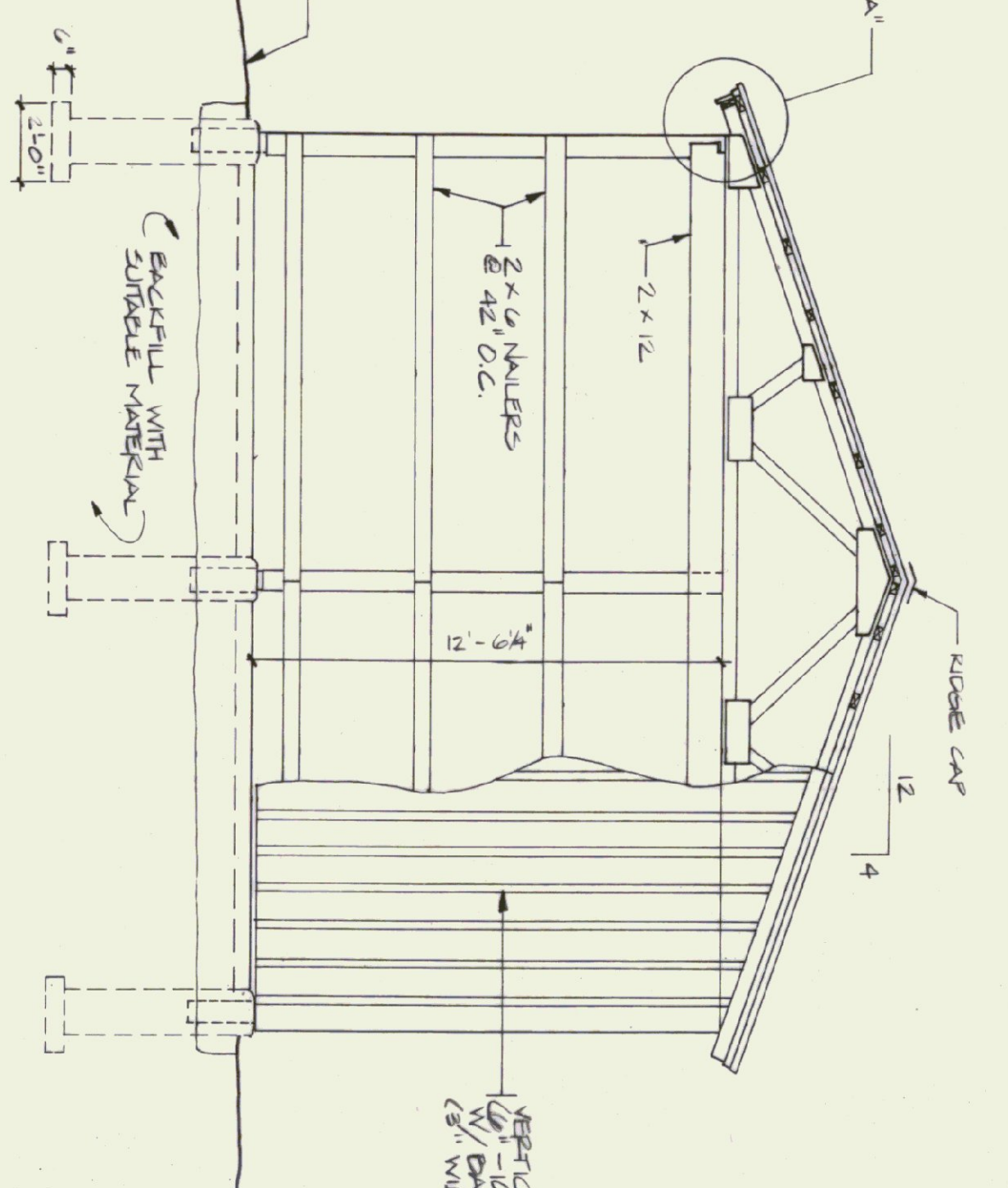
DATE: April 21, 1995
DRAWN BY: A. POULIN
APPROVED BY: R. TERRILL

SCALE: AS NOTED
REVISIONS: 07/29/95 JJA

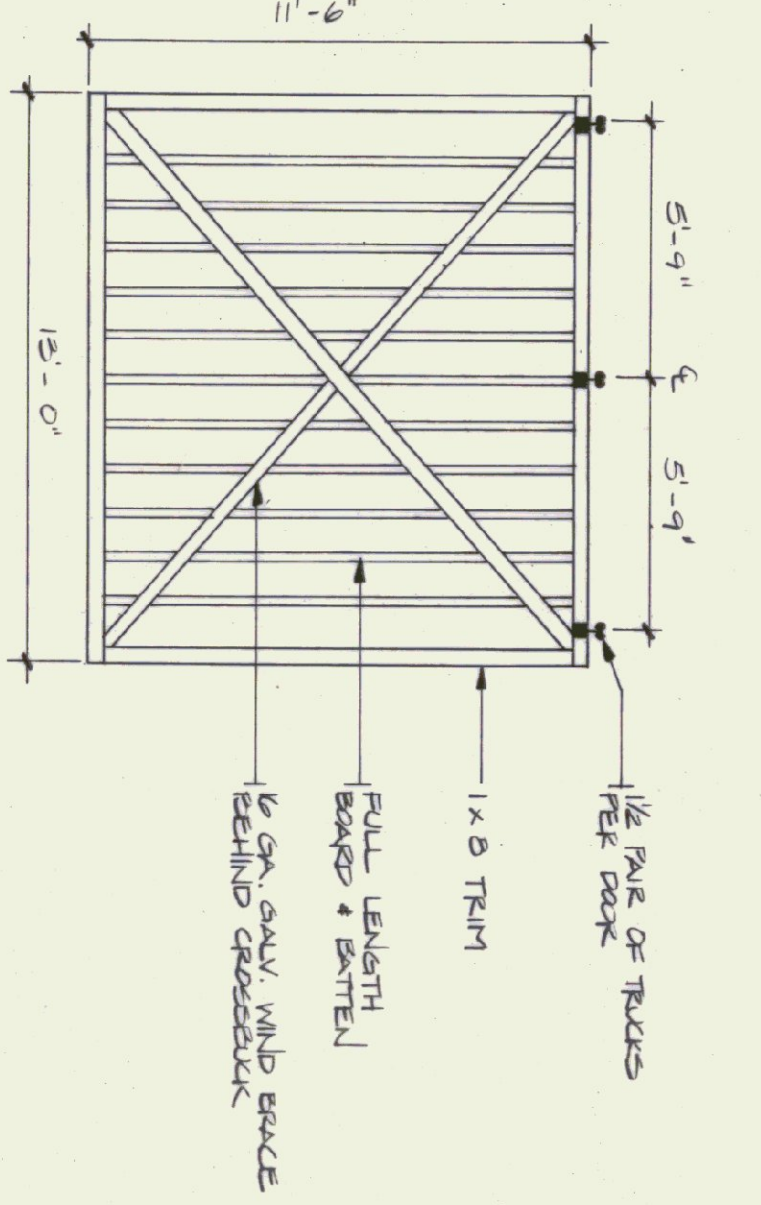
DWG. NO. E-1
6 OF 8



FRONT ELEVATION
SCALE: 1/4" = 1'-0"



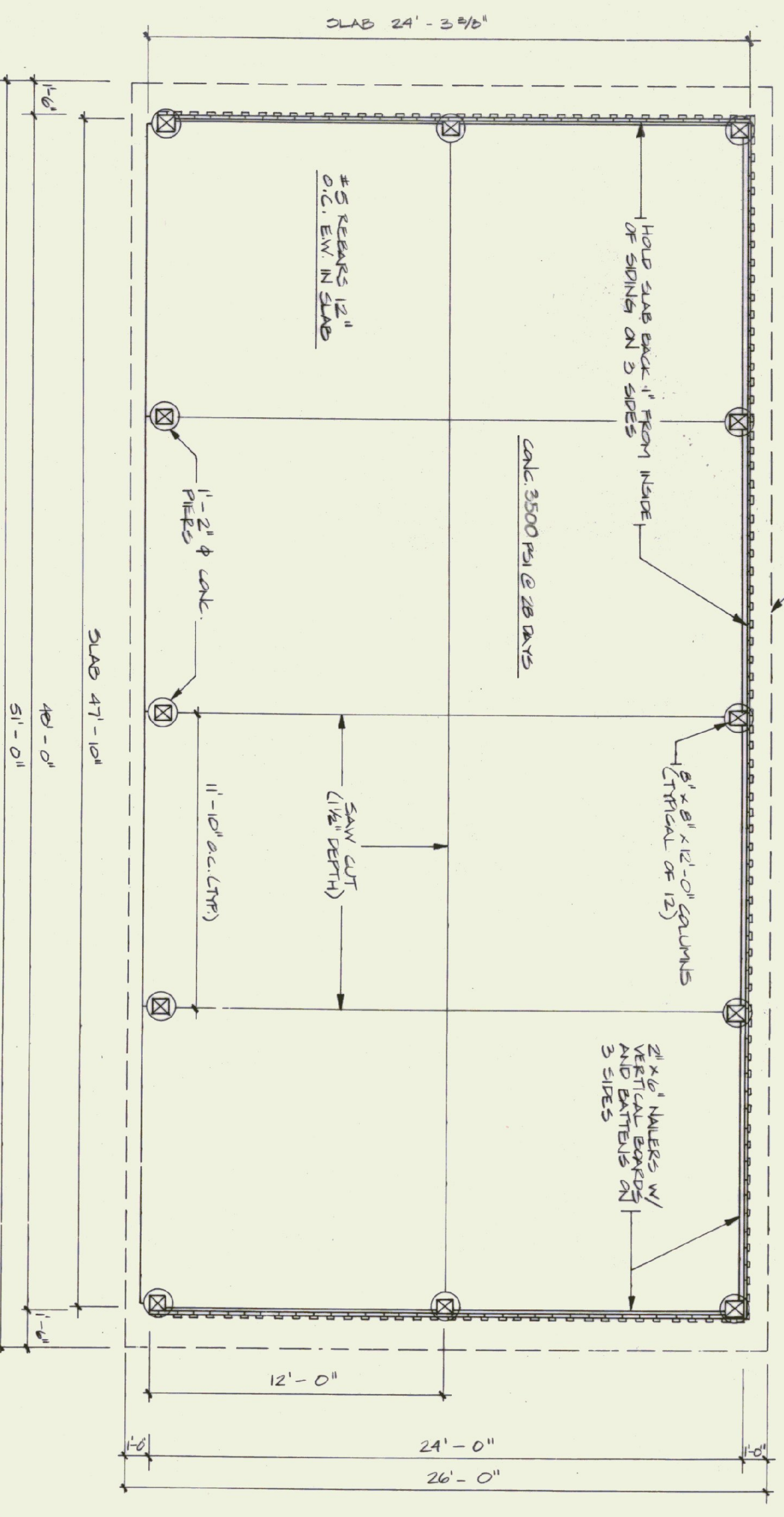
END ELEVATION
SCALE: 1/4" = 1'-0"



DOOR DETAIL
N.T.S. (TYPICAL OF 4)

- TRUSS NOTES:**
- 1) TRUSS MANUFACTURER TO REMOVE THE DEPT. OF STATE BUILDINGS ENGINEER A SET OF ENGINEERED & STAMPED DRAWINGS FOR APPROVAL PRIOR TO TRUSS MANUFACTURE.
 - 2) TRUSS MANUFACTURER TO REMOVE THE CONTRACTOR WITH ALL NECESSARY INSTALLATIONS FOR ROOF & FLOOR INSTALLATION, MECHANICAL, ELECTRICAL, PLUMBING, ETC.
 - 3) TRUSS DESIGN LOADS IN ACCORDANCE WITH THE 1987 B.O.C.A. MINIMUM LOADS:

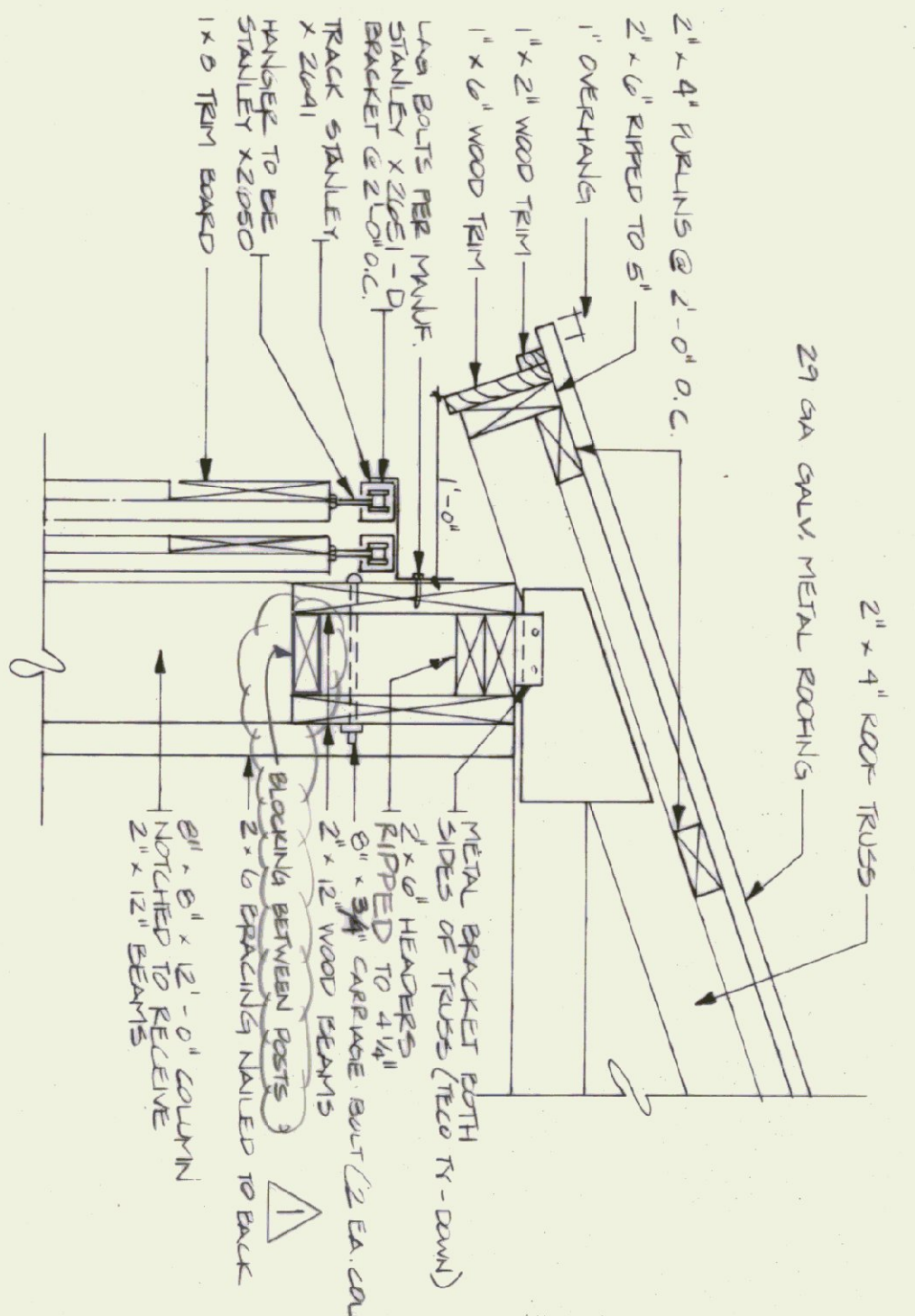
LIVE — FEB 1987 B.O.C.A. FOR VT (50 P.S.F. MIN.)
 DEAD — AS CALCULATED FROM TRUSSES & ROOF MATERIALS
 WIND — 25 P.S.F.
 DIAGONAL WIND BRACING PER TRUSS MANUF.



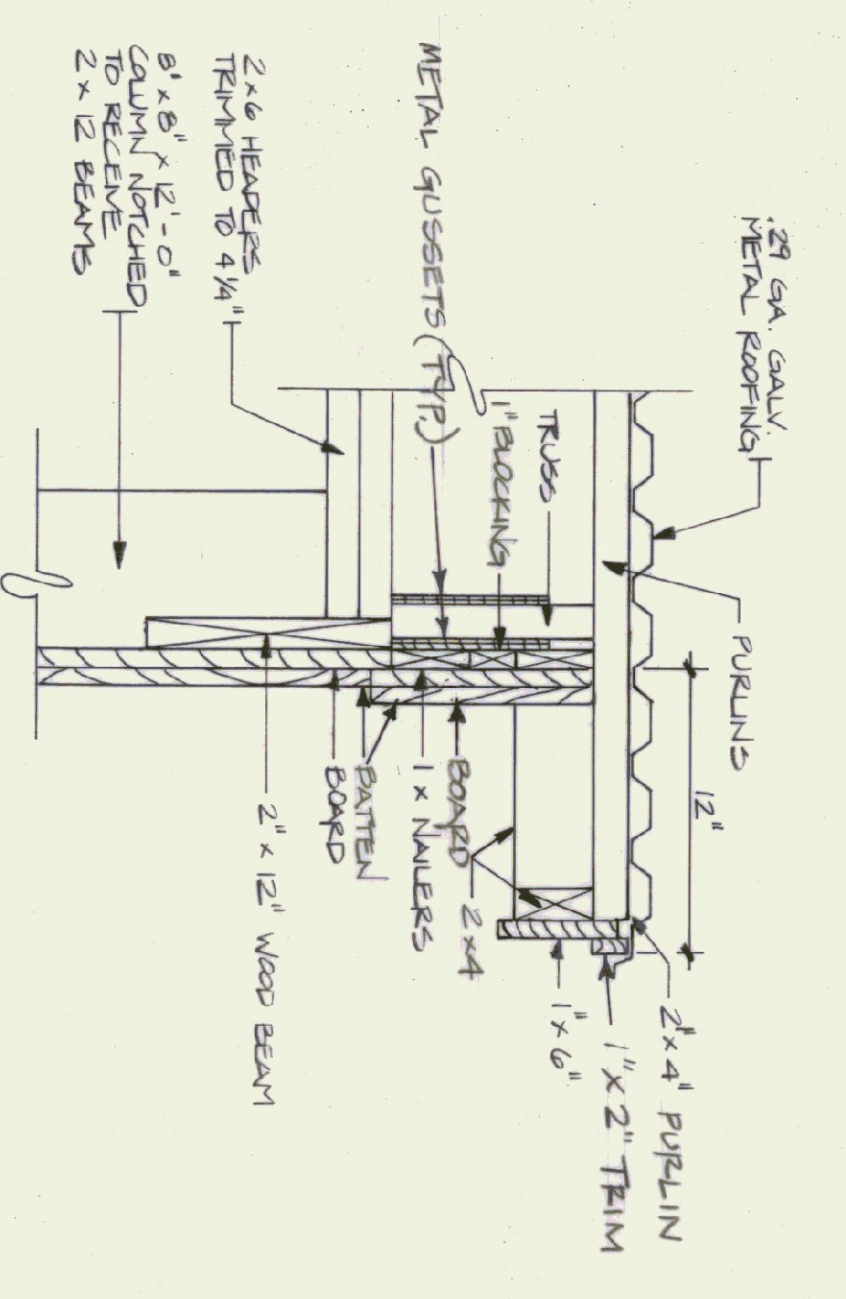
SHED PLAN
SCALE: 1/4" = 1'-0"

- CONCRETE REINFORCEMENT**
- FOOTINGS RECAST ON SITS 9-22 & 9-26-95.
 - SOUTHLINES ALONG THE SOUTHERN WALL & THE MIDDLE OF THE WEST WALL ON 10-2-95.
 - SOUTHLINES REMAINING ON 10-3-95.
 - SLAB ON 10-10-95.

NOTE:
 USE # 5 REBARS @ 1'-0" O.C. EACH WAY WITH 2" COVER



DETAIL "A"
SCALE: 1 1/2" = 1'-0"



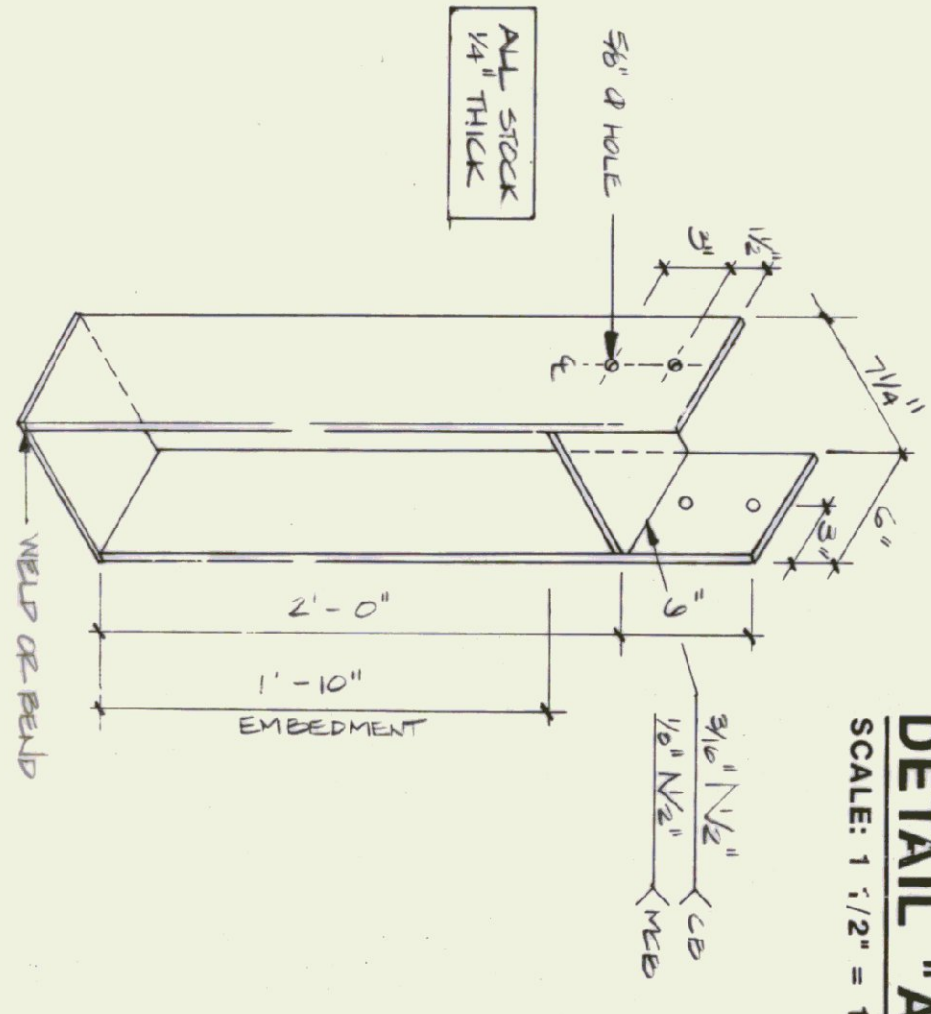
RAKE DETAIL
SCALE: 1 1/2" = 1'-0"

- LUMBER NOTES:**
- 1) FRAMING MEMBERS TO BE KILN DRIED
 - 2) ROOFING & BATTENS TO BE STAMPED WITH ONE COAT ON ALL SIDES PRIOR TO INSTALLATION.
 - 3) AFTER INSTALLATION EXTERIOR SIDING TO RECEIVE ONE ADDITIONAL COAT OF SIDING.
 - 4) BOARD & BATTEN SIDING TO BE UNKNEELED WITH SAWN WHITE FINISH. BOARD TO BE FINISHED WITH 10# BATTEN TO WIDTH 5".
 - 5) BOARD SIDING & BATTEN SIDING TO BE FULL LENGTH WITH NO HORIZONTAL JOINTS.
 - 6) ALL WALS TO BE GALVANIZED.

- FINISH NOTES:**
- 1) BOARD & BATTEN SIDING TO BE STAMPED WITH ONE COAT ON ALL SIDES PRIOR TO INSTALLATION.
 - 2) AFTER INSTALLATION EXTERIOR SIDING TO RECEIVE ONE ADDITIONAL COAT OF SIDING.
 - 3) STAIN TO BE OLYMPIC OIL BASE SEMI-TRANSPARENT DROWN # 713.

As BUILT

COLUMN BASE ANCHOR
SCALE: 1 1/2" = 1'-0"



STATE OF VERMONT DEPARTMENT OF STATE BUILDINGS AGENCY OF ADMINISTRATION MONTPELIER, VERMONT	
AGENCY OF TRANSPORTATION 24' X 48' STORAGE SHED SUBSURY MAINTENANCE FACILITY 3 BAY GARAGE	
DATE APRIL 21, 1995	SCALE AS NOTED
DRAWN BY A. POULIN	REVISIONS 02/27/96 JJA
APPROVED BY R. TETZLAUF	DWG. NO. CSS-1
VERMONT 8 OF 8	