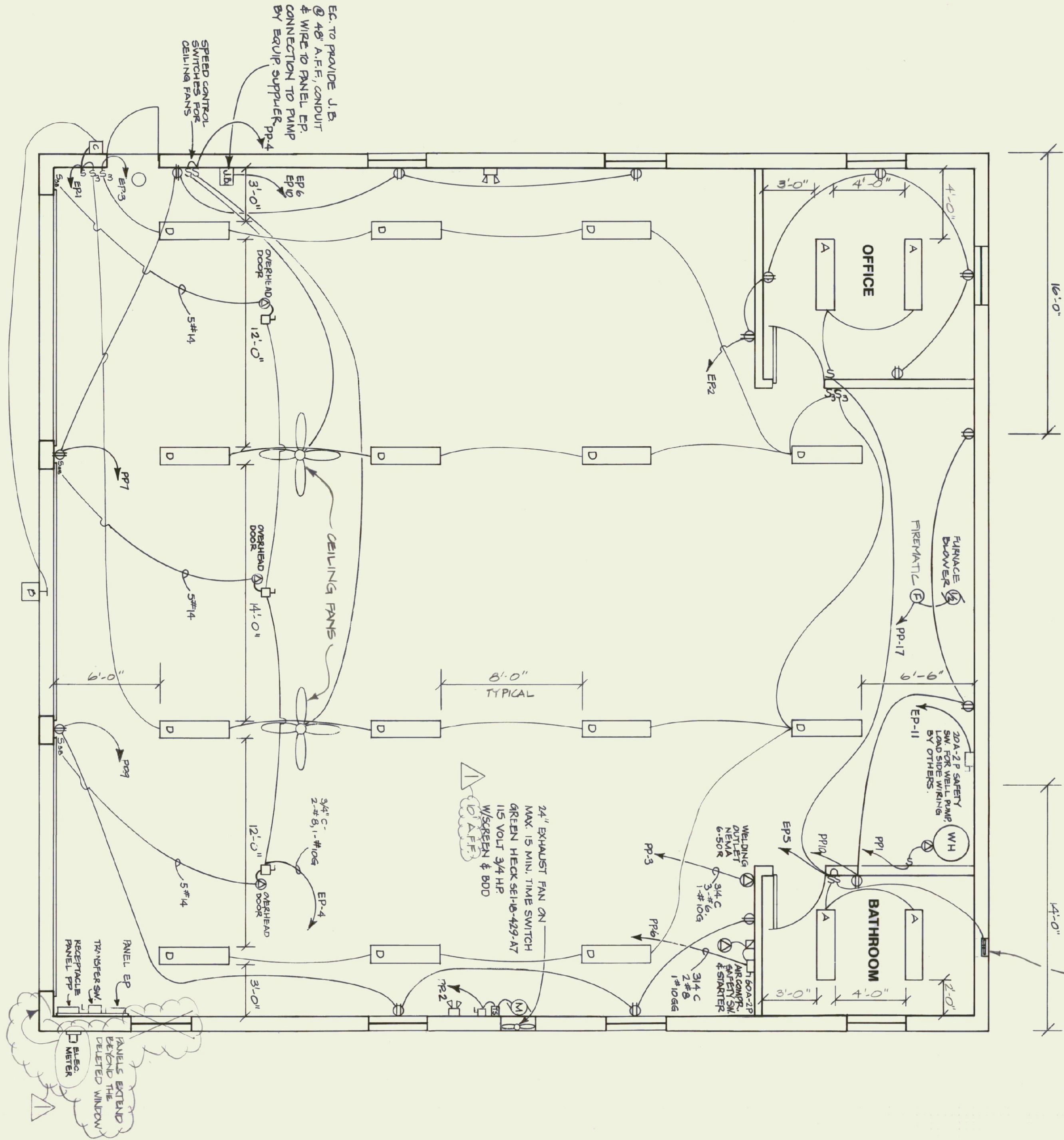


100 CFM EXHAUST FAN @ 1'-0" A.F.F. BRANN SOF WITH BUILT-IN BACK DRAFT DAMPER & OUTSIDE WEATHER HOOD



ELECTRICAL PLAN
SCALE: 1/4" = 1'-0"

ELECTRICAL FIXTURE SCHEDULE

KEY	MANUFACTURER & MODEL	MOUNTING	LAMPS	VOLTAGE	REMARKS
A	Columbia WC 240 A Elec/OCT 120	Surface	2-F32WB/SF35	120	Electronic Ballast
B	Spaulding A-CVI-100-HPS-FG-VG-WBS	15' A.F.F.	100W - HPS	120	Photo Cell
C	Spaulding MRR-35-HPS-FC	Wall 8' A.F.F.	35W-HPS	120	Photo Cell
D	Columbia CSR 248-HO-1	Surface	2-F40T12H0/W/W/Spacer	120	Low Temp. Ballast
F	Stanco VCX121GC	Surf - Ceiling	150 -A-	130	
G	Stanco 150L & CAR. #80 Wire Guard	Surface Ceiling	150W-PAR-FL	130	WP Cast Box

ELECTRICAL SYMBOLS

- ① - Single duplex receptacle, 20 AMP-125 V CMT # 5362, Hubbell
- ② - Single receptacle 20 AMP - 125 V CMT # 5062, Hubbell, Ceiling Mounted
- S3 - Three Way Switch 20 AMP 120-277V # 1223 Hubbell
- S3B - Three Button 24V Control switch supplied with door opening system
- WP - Weather proof

PANEL DESIGNATORS

PANEL: PP
MOUNTING: SURFACE
MAINS: 200 Amp - 2 Pole - MCB, 120/240 Volt, 1 Phase, 3 Wire
BRANCHES: AS SHOWN
CONNECTED LOAD: 35 KW

UL LABELED FOR SERVICE ENTRANCE

CKT NO.	KW LOAD	DESCRIPTION	BREAKER		DESCRIPTION	KW LOAD	CKT NO.	
			P AMP	P AMP				
1	1.0	WATER HEATER	1	20	1	EXHAUST FAN	2	
3	10.0	WELDING OUTLET	2	50	1	CEILING FANS	4	
5	-	-	80	2	2	AIR COMPRESSOR	6	
7	5	RECEPTACLES	GH	15	-	-	8	
9	5	RECEPTACLES	GH	50	GH	1	RECEPTACLES	10
11	1.4	RECEPTACLES	GH	20	GH	1	SPARE	12
13	9.6	PANEL EP	2	60	20	1	SPARE	14
15	-	-	-	20	1	SPARE	16	
17	-	WOOD FURNACE	1	20	-	-	18	
19	-	SPACE	-	-	-	-	20	
21	-	SPACE	-	-	-	-	22	
23	-	SPACE	-	-	-	-	24	
25	-	SPACE	-	-	-	-	26	
27	-	SPACE	-	-	-	-	28	
29	-	SPACE	-	-	-	-	30	
31	-	SPACE	-	-	-	-	32	
33	-	SPACE	-	-	-	-	34	
35	-	SPACE	-	-	-	-	36	
37	-	SPACE	-	-	-	-	38	
39	-	SPACE	-	-	-	-	40	

PANEL DESIGNATORS

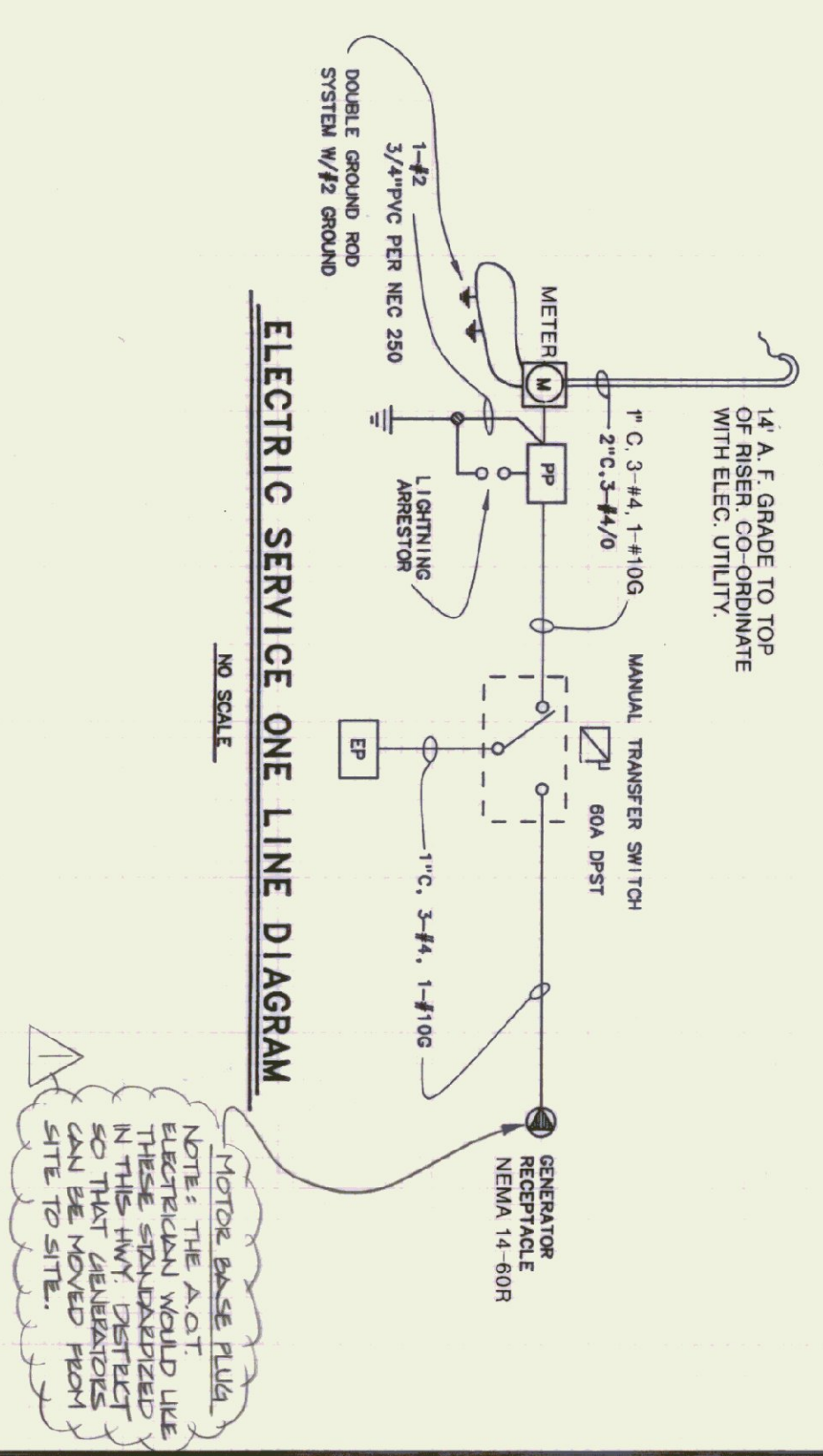
PANEL: EP
MOUNTING: SURFACE
MAINS: 80 A - 2 P - MCB, 120/240 V, 1 PH, 3 W
BRANCHES: AS SHOWN
CONNECTED LOAD: 9.6 KW

CKT NO.	KW LOAD	DESCRIPTION	BREAKER		DESCRIPTION	KW LOAD	CKT NO.		
			P AMP	P AMP					
1	7	LIGHTING	1	20	1	RECEPTACLES	1.0	2	
3	8	LIGHTING	1	20	40	1	OVERHEAD DRS.	1.5	4
5	4	LIGHTING	1	20	20	1	FUEL PUMP LIGHT	1.0	6
7	8	EXT SHED LIGHTS	1	20	-	-	(NEUTRAL DISC)	5	8
9	6	INT SHED LIGHTS	1	20	20	2	FUEL PUMP	1.5	10
11	5	WATER PUMP	2	20	-	-	-	12	
13	-	-	-	-	-	-	(NEUTRAL DISC)	-	14
15	-	SPACE	1	20	-	-	SPACE	16	
17	-	SPACE	1	20	-	-	SPACE	18	
19	-	SPACE	-	-	-	-	SPACE	20	
21	-	SPACE	-	-	-	-	SPACE	22	
23	-	SPACE	-	-	-	-	SPACE	24	

NOTES

- All branch circuit runs surface mounted in EMT minimum 4' above floor with suitable boxes & covers.
- All outlets & switches at all locations shall be at least 48" A.F.F.
- All wiring to moving or vibrating equipment to be in Greenfield conduit.
- Install ground wire & rod in accordance with local power company specifications.
- Provide plywood panel 3/4" thick with 2 coats of grey paint and 3/4" spacers for main distribution panel with main breaker. See Section 06100-2.
- Panel shall be SOD N00B 120/240V Single phase 3 wire 200 AMP main 10/000 ICR breakers 20 poles with piano cover or approved equal.

ELECTRIC SERVICE ONE LINE DIAGRAM



AS BUILT

STATE OF VERMONT
DEPARTMENT OF STATE BUILDINGS
AGENCY OF ADMINISTRATION
VERMONT
VERMONT AGENCY OF TRANSPORTATION
SUBBURY MAINTENANCE FACILITY
3 BAY GARAGE

REVISIONS

DATE	SCALE	REVISIONS	DWG. NO.
April 21, 1995	AS NOTED	07/21/95 JJA	E-1

DRAWN BY: A. POULIN
APPROVED BY: R. TERRILL

SCALE: 1" = 50'-0"

6 OF 8

PARTIAL SITE PLAN
SCALE: 1" = 50'-0"

