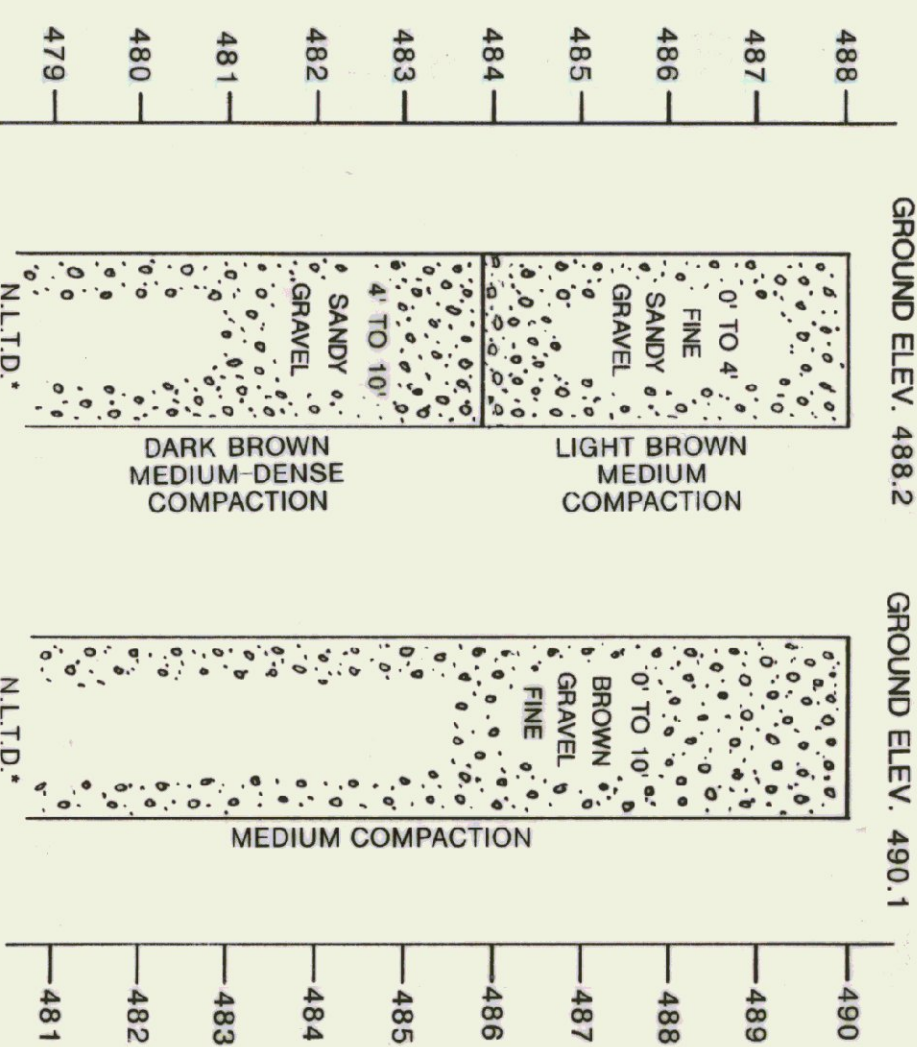


**TEST PIT LOG**



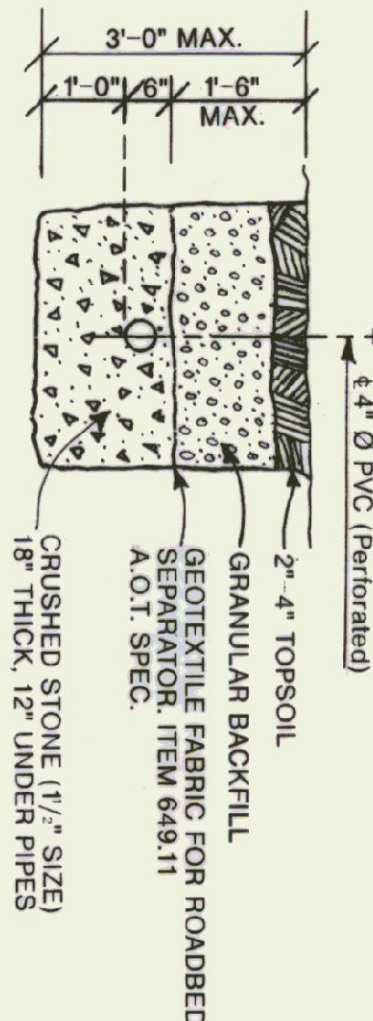
TEST HOLES DUG BY BACKHOE ON 11/15/94  
 \* N.L.T.D. - NO LEDGE TO DEPTH  
 NO MOTTLES  
 NO WATER

**SEPTIC DESIGN INFORMATION**

6 EMPLOYEES  
 DESIGN FLOW 150 GAL./DAY  
 PERCOLATION RATE: P-1 4.1 MIN./INCH  
 APPLICATION RATE 1.48 GAL./FT.<sup>2</sup> DAY  
 FACTOR OF SAFETY 1.2  
 SOIL BORING (10' DEPTH)  
 PERCOLATION TEST HOLE (30" DEPTH)

**TYPICAL TRENCH SECTIONS**

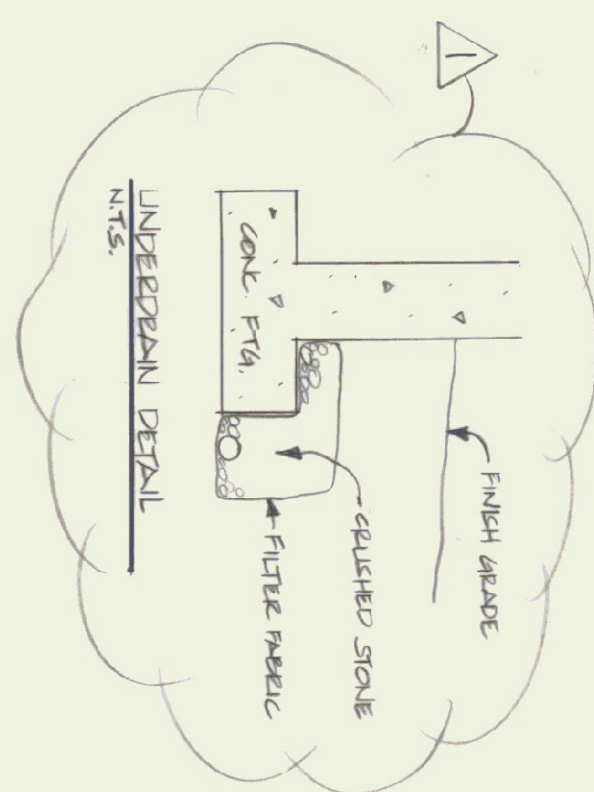
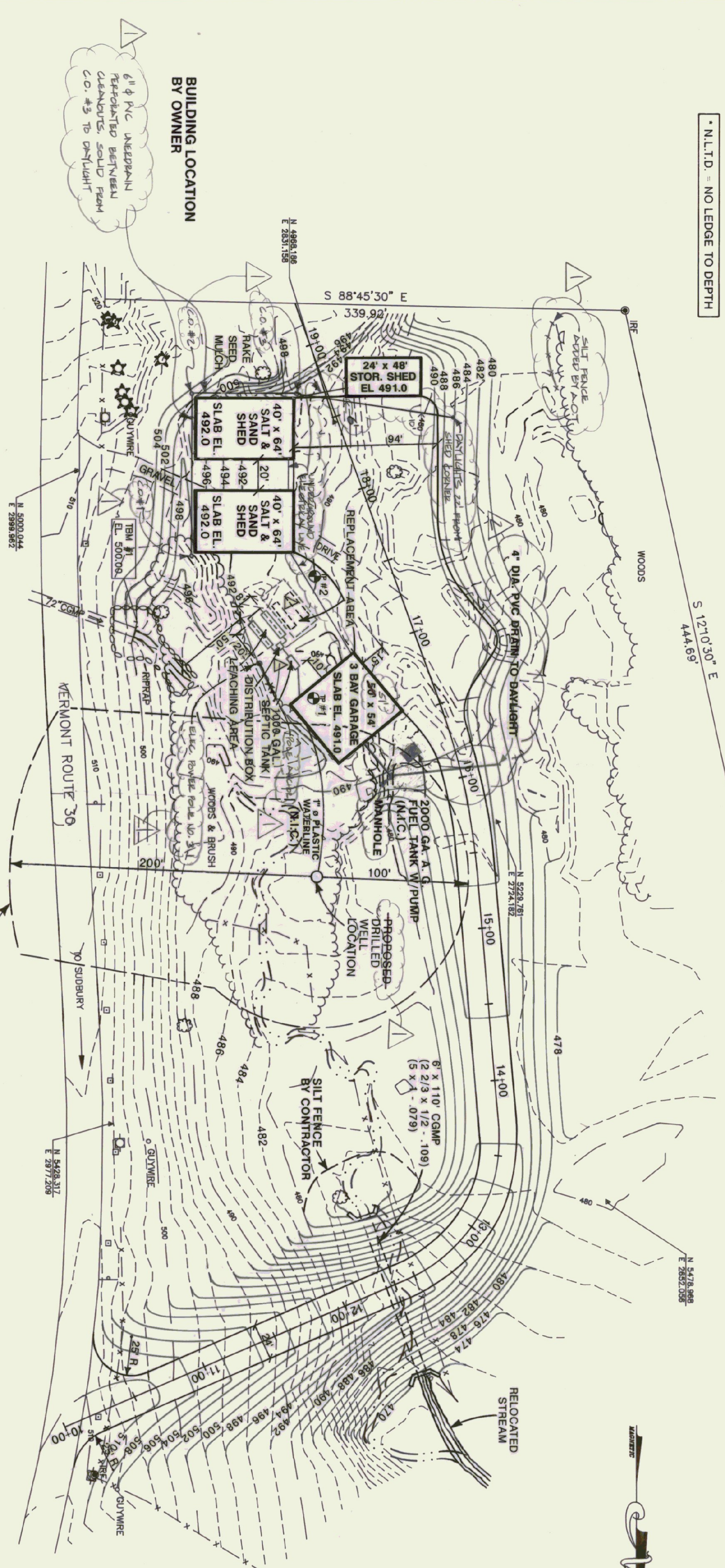
SCALE: 1/2" = 1'-0"



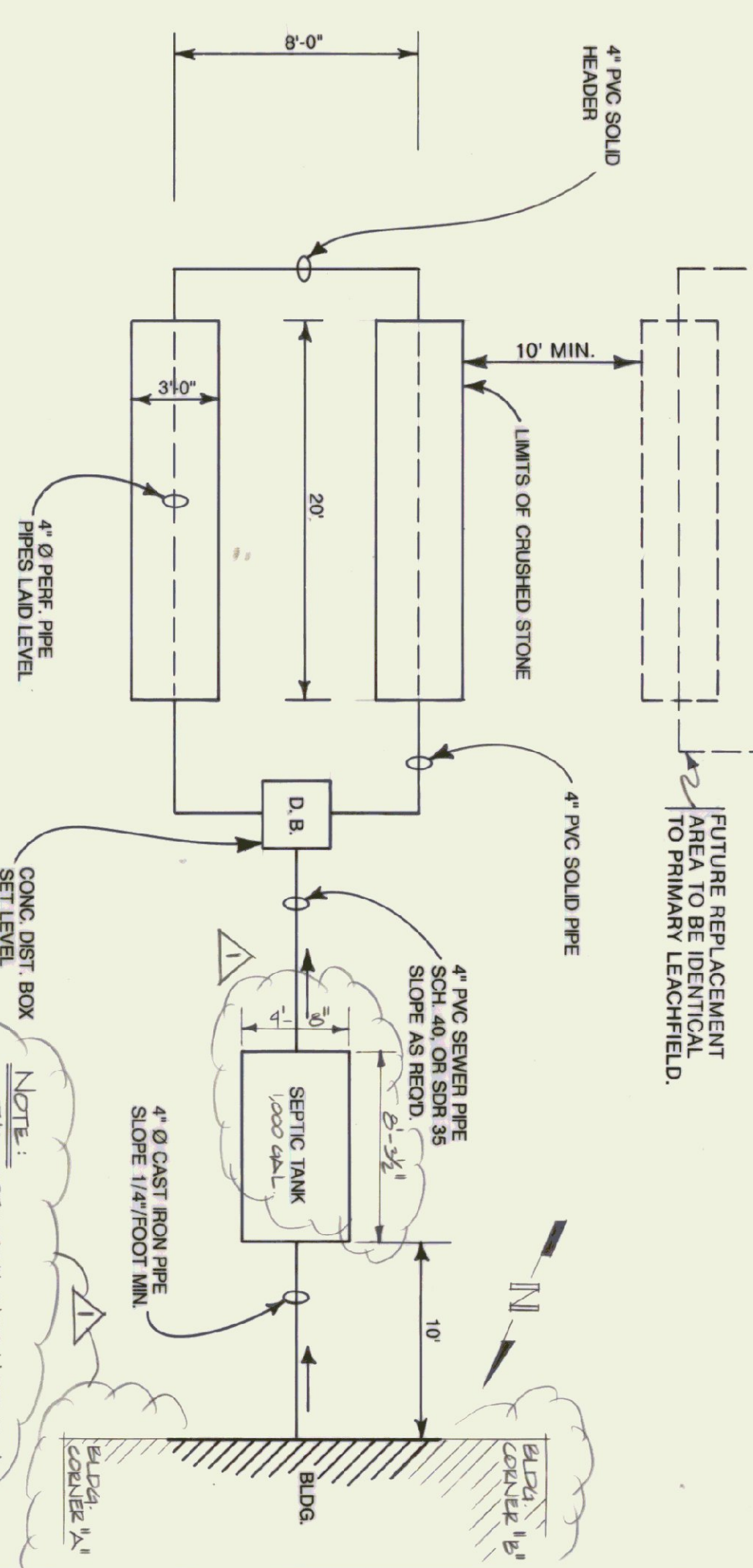
**NOTE:**  
 STATION 10+00 TO 18+65 ENTRANCE DRIVE AND  
 PARKING LOT CONSTRUCTION IS NOT IN CONTRACT

DRILLED WELL  
 SEPARATION AREA  
 FROM LEACH FIELD  
 STA. 15+40±  
 105' LT.

SCALE: 1" = 50'-0"



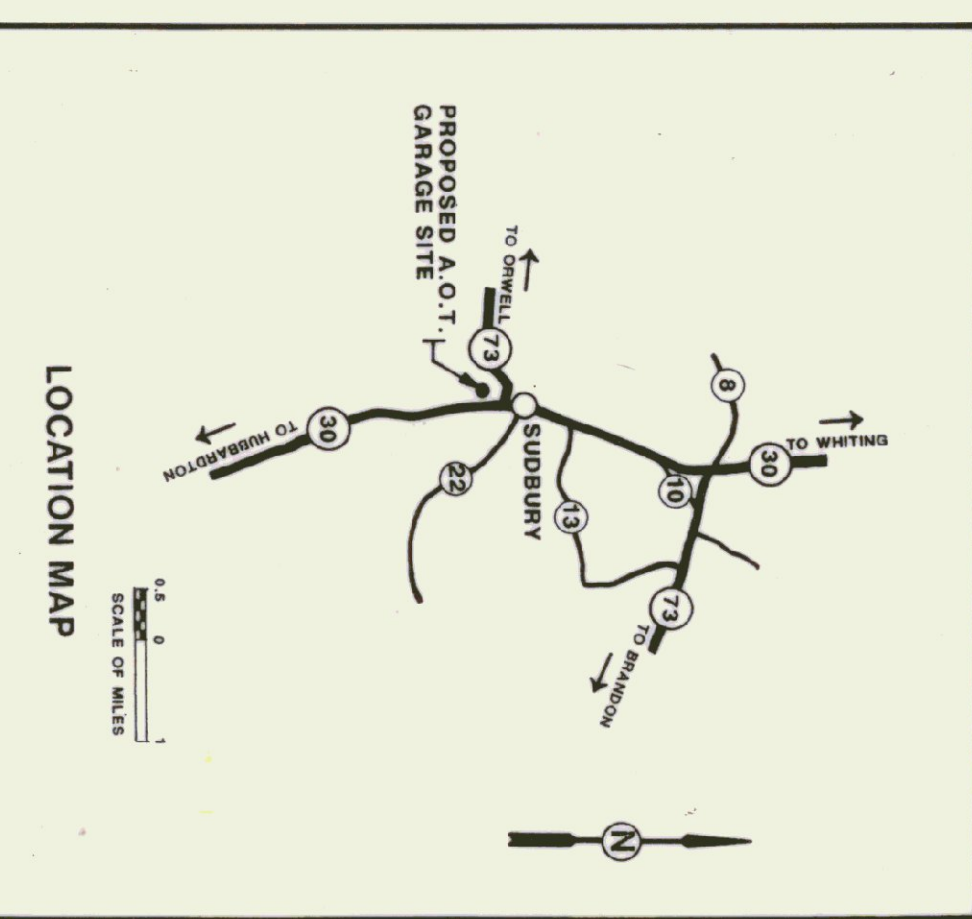
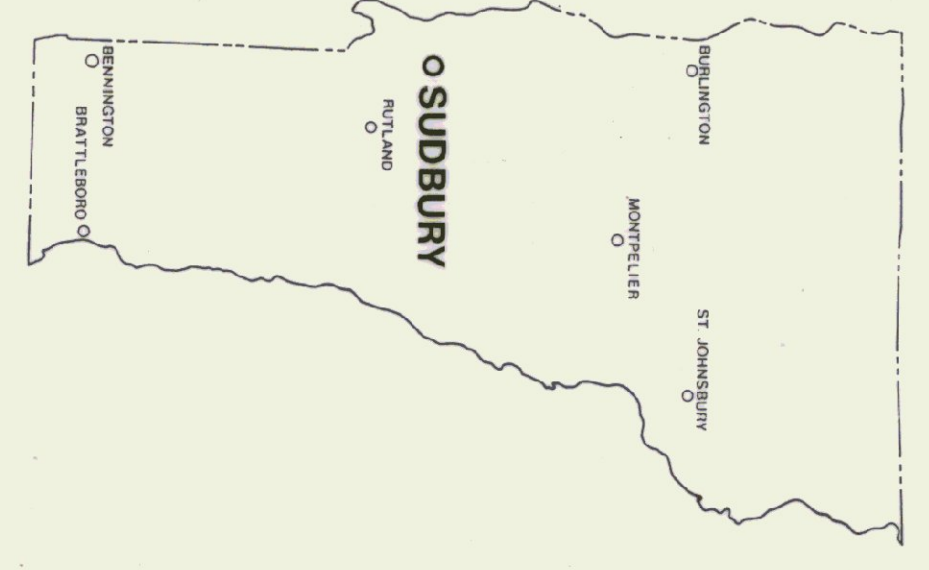
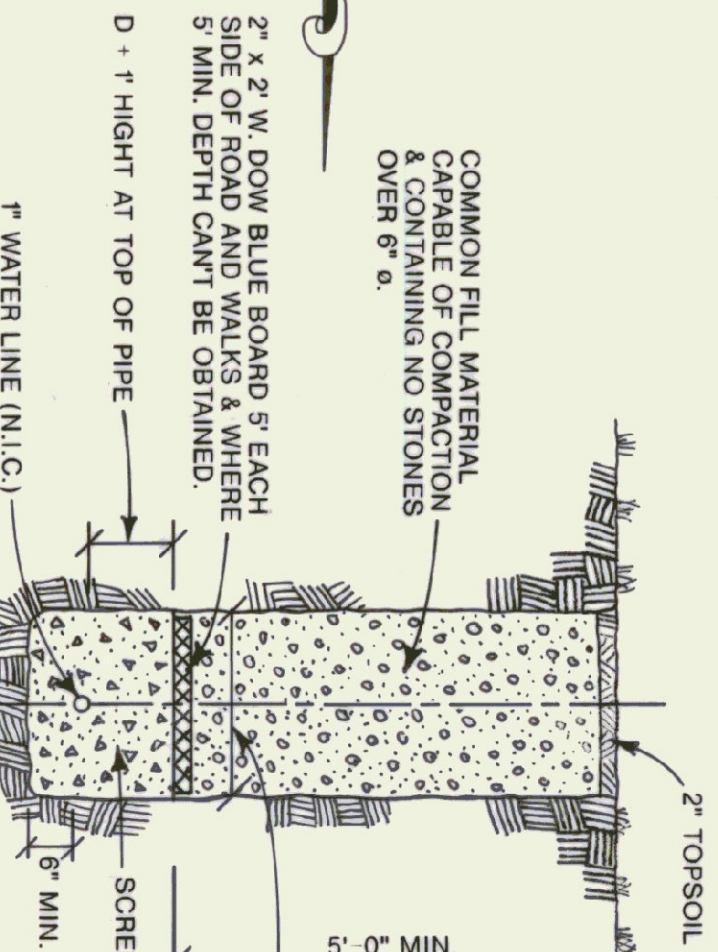
**LEACH FIELD PLAN**  
 NOT TO SCALE



COMMON FILL MATERIAL  
 CAPABLE OF COMPACTION  
 & CONTAINING NO STONES  
 OVER 6" Ø.

2" x 2" W. DOWN BLUE BOARD S' EACH  
 SIDE OF ROAD AND WALKS & WHERE  
 5' MIN. DEPTH CANT BE OBTAINED.

**WATER LINE DETAIL**  
 SCALE: 1/2" = 1'-0"



NOTE: THE SEPTIC TANK INSTALLED IS A 1000 GALL. PRECAST CONCRETE TANK MANUFACTURED BY J.P. CARBON & SONS. THE TANK IS EQUIPPED W/ A CLEAN OUT HOLE NEAR EACH END. EACH HOLE IS PROVIDED W/ A CONCRETE COVER. TIES TO EACH OF THESE ORIGINALLY ARE:

POINT	COORDINATE	DISTANCE FROM POINT	DISTANCE FROM CENTER
POINT C	36.5'	48.0'	48.0'
POINT D	38.2'	59.7'	59.7'
POINT E	59.0'	65.0'	65.0'
POINT F	57.5'	65.0'	65.0'

TIES TO ON-SITE ELEC. POLE & ANCHOR:

POLE #	COORDINATE	DISTANCE FROM CENTER
POLE #1	34.0'	42.5'
POLE #2	34.0'	58.5'

\* POLE HAS A TOTAL LENGTH OF 40'. (6' BURIED & 34' HIGH)

DRAWING PREPARED FROM SURVEY DONE BY  
 VERMONT SURVEY AND ENGINEERING, INC.  
 (PROJECT NO. 13794)

STATE OF VERMONT  
 DEPARTMENT OF STATE BUILDINGS  
 AGENCY OF ADMINISTRATION  
 MONTPELIER, VERMONT

VERMONT AGENCY OF TRANSPORTATION  
**SITE PLAN**  
 SUDBURY MAINTENANCE FACILITY  
 3 BAY GARAGE

DATE: 2/28/95  
 SCALE: 1" = 50'-0"  
 DRAWN BY: [Signature]  
 APPROVED BY: [Signature]

REVISIONS:  
 NO. 1: 4/25/95  
 NO. 2: 4/25/95

DWG. NO. SD-1  
 2 OF 8

AS BUILT

