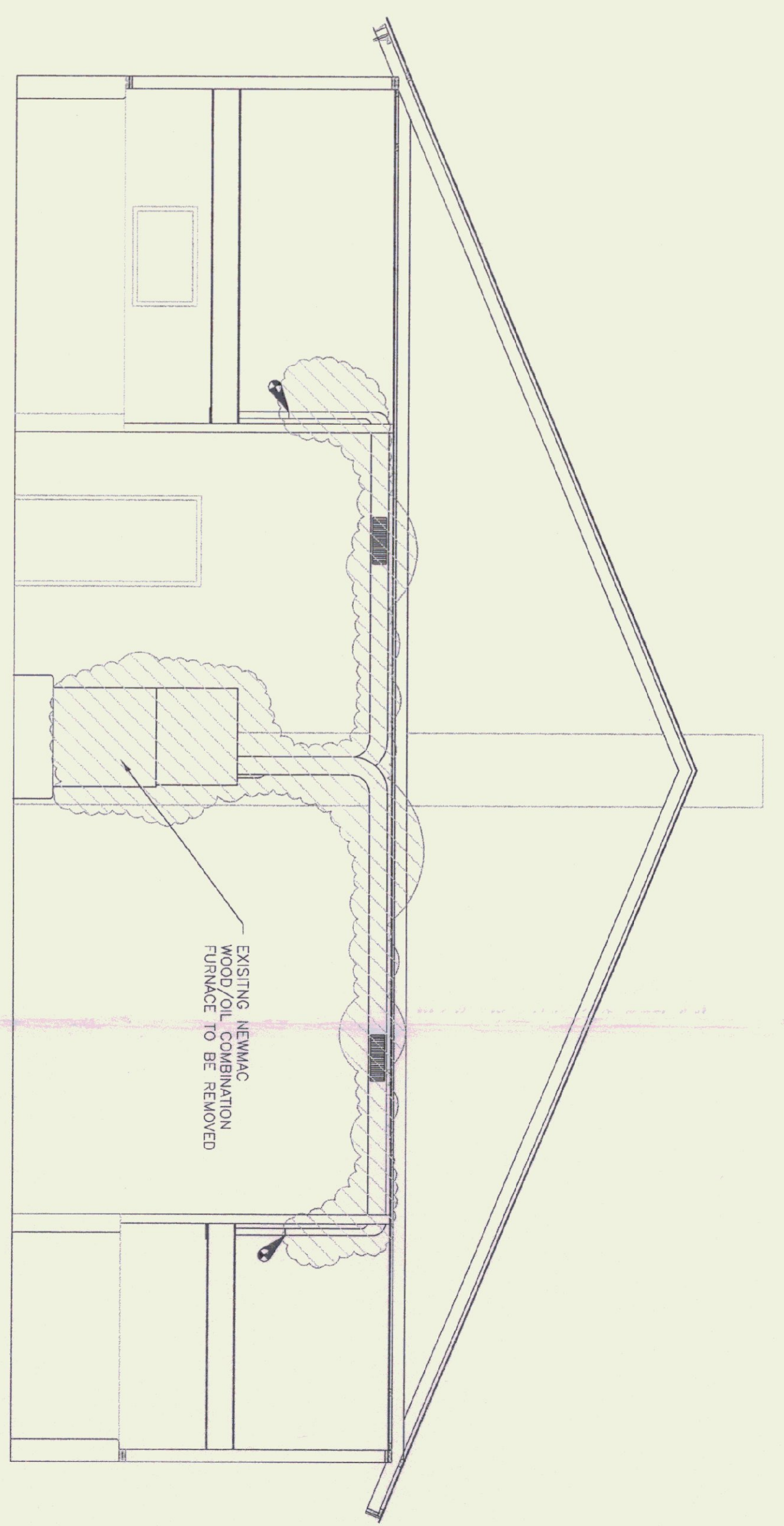


EXISTING 1/2" FUEL/OIL SUPPLY & RETURN PIPING TO BE REMOVED

FLOOR PLAN
1/4" = 1'-0"

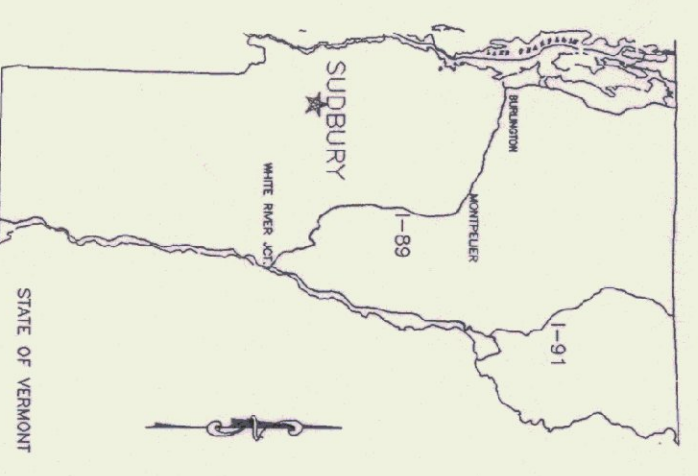
LEGEND	
	BALL VALVE
	FUSE-MATIC VALVE
	UNION
	SPRING ISOLATOR
	CHECK VALVE
	CONNECTION BETWEEN EXIST. & NEW
	WEBSTER OSV
	THERMOSTAT MOUNT @ 5' A.F.F.
	FUEL/OIL TRANSFER PUMP
	PRESSURE GAUGE
	TO BE REMOVED



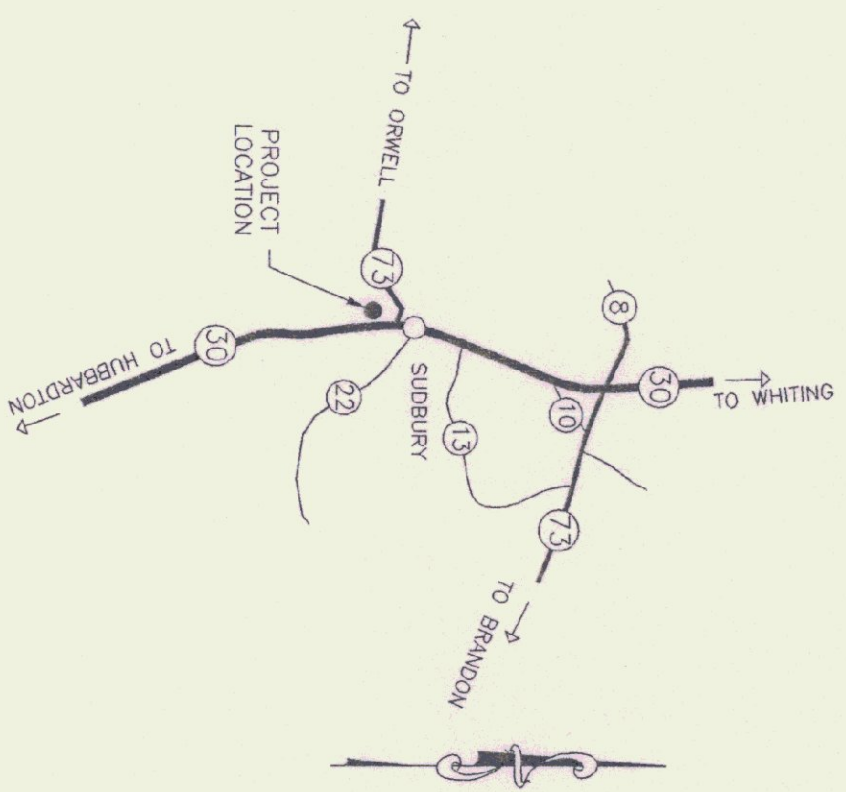
EXISTING NEW-MAC WOOD/OIL COMBINATION FURNACE TO BE REMOVED

SECTION
1/4" = 1'-0"

NOTES:
EXISTING FURNACE TO REMAIN OPERATIONAL UNTIL THE NEW OIL FURNACE IS FUNCTIONAL. UNLESS CONTRACTOR PROVIDES ADEQUATE TEMPORARY HEAT.

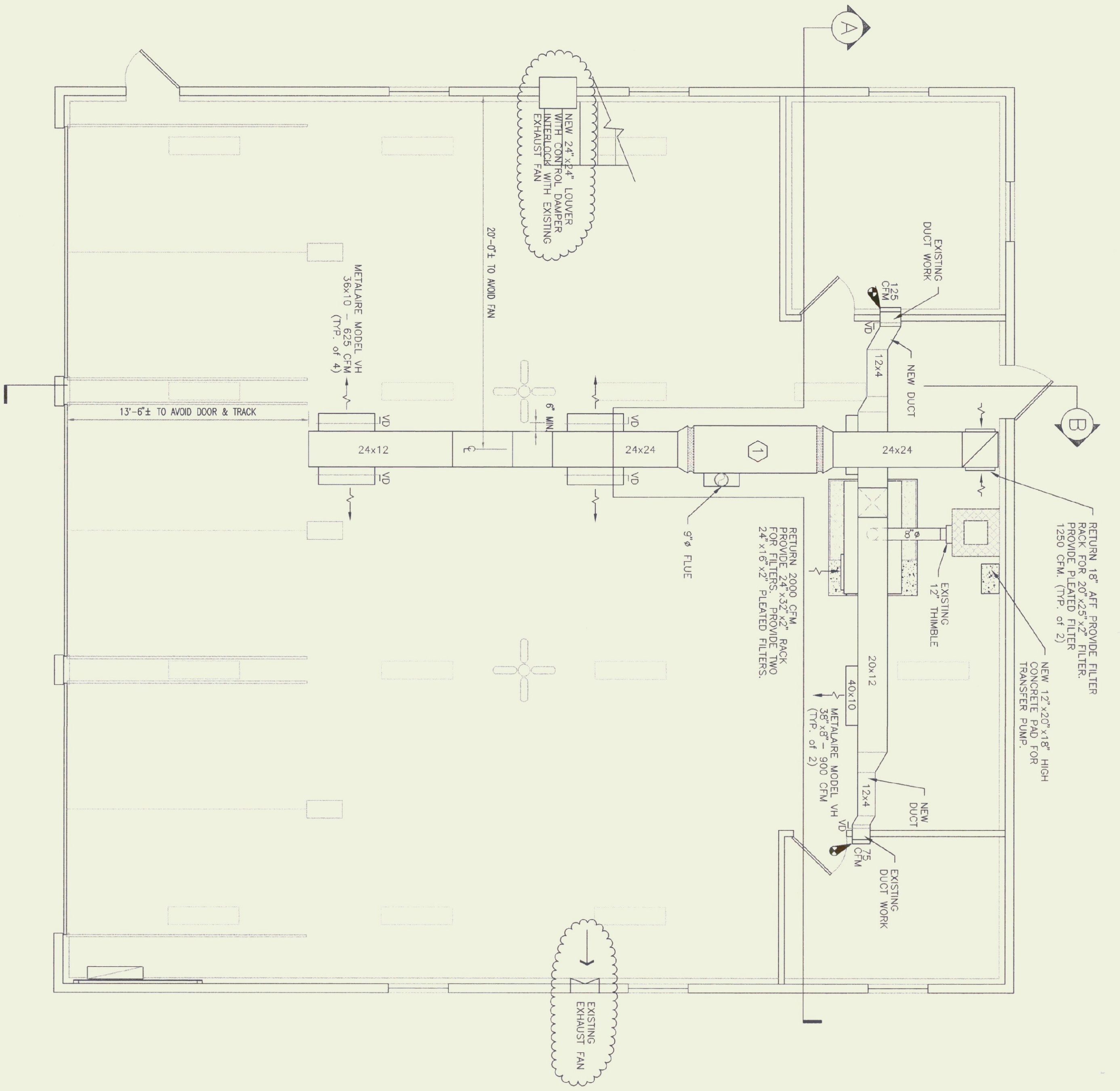


STATE MAP



TOWN of SUDBURY MAP

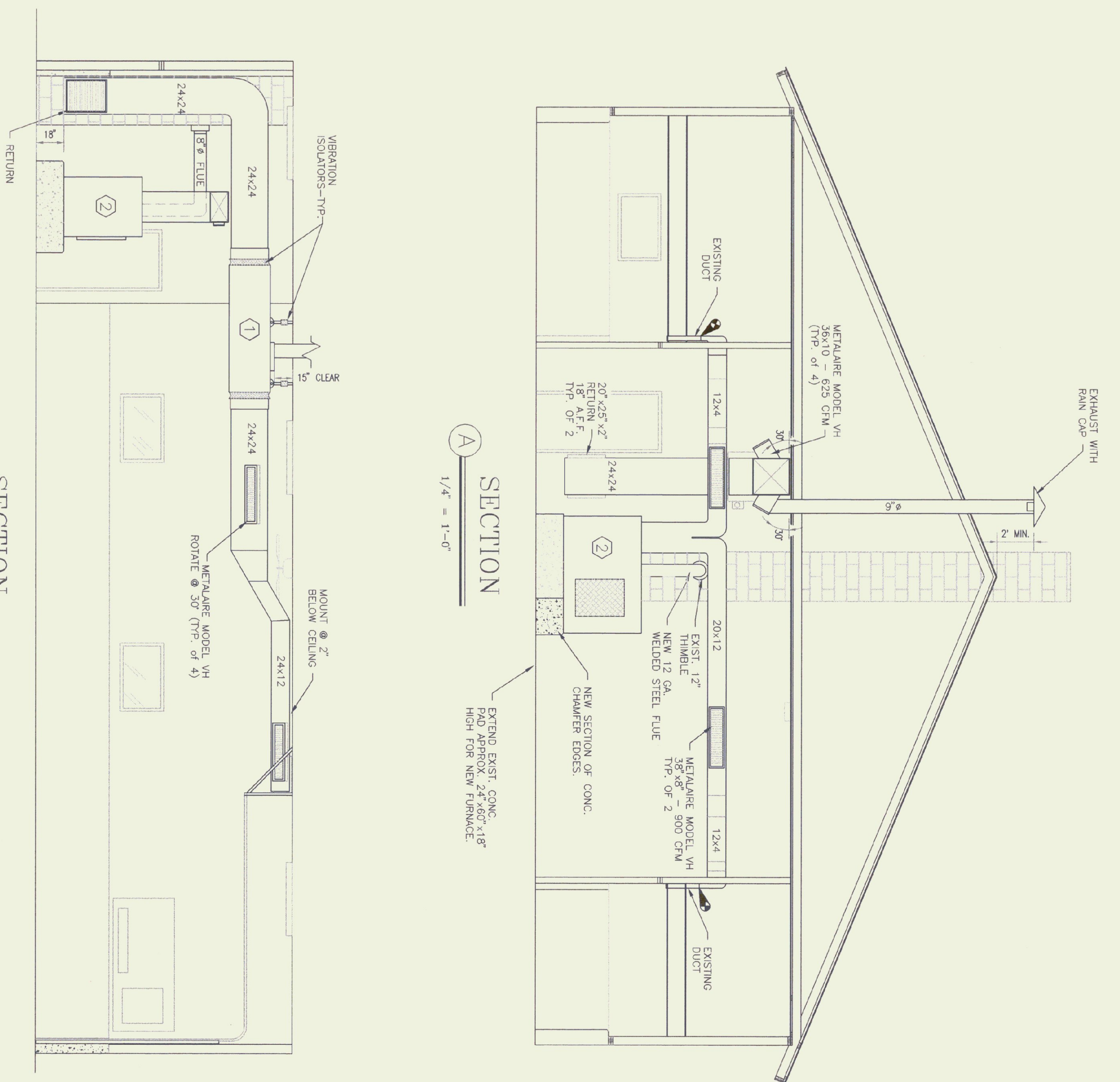
<p>SCALE: AS NOTED DATE: OCT 1996 DRAWN BY: G.P. MORWOOD APPR. BY: <i>[Signature]</i></p>	<p>REVISIONS</p>	<p>SUDBURY - A.O.T. GARAGE HEATING DEMO PLAN & NOTES</p>		<p>STATE OF VERMONT Department of Buildings & General Services Agency of Administration Montpelier, Vermont</p>
<p>SUDBURY HEATING DEMO PLAN</p>		<p>SUDBURY, VERMONT</p>		
<p>A-1 1 OF 2</p>				



FLOOR PLAN
1/4" = 1'-0"

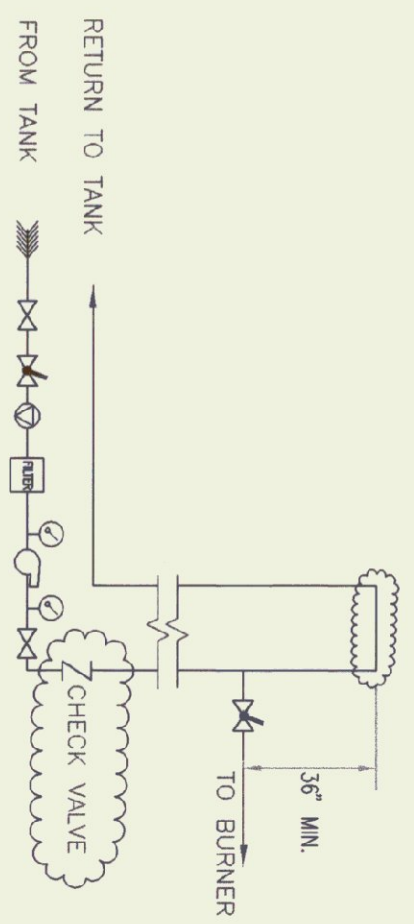
FURNACE SCHEDULE

MAKE / MODEL	BTU OUTPUT	FUEL	CFM	BLOWER HP	VOLTAGE	FLUE
1 JACOBSON - CHURCH 280-23	224,000	# 2 OIL	2440	3/4	115	8"
2 LYNDALDE 915	250,000	CHUNK WOOD	2000	3/4	115	8"



SECTION B
1/4" = 1'-0"

SECTION A
1/4" = 1'-0"



FUEL PIPING SCHEMATIC

NTS

"AS-BUILT"

SUDBURY - A.O.T. GARAGE
HEATING
NEW PLAN & SECTIONS



STATE OF VERMONT
Department of Buildings & General Services
Agency of Administration
Montpelier, Vermont

SCALE: AS NOTED
DATE: OCT 1996
DRAWN BY: G. P. NORWOOD
APPR. BY:

REVISIONS
"AS-BUILT"
9/2/97

SUDBURY
HEATING
PLAN & SECTIONS

SUDBURY,

VERMONT