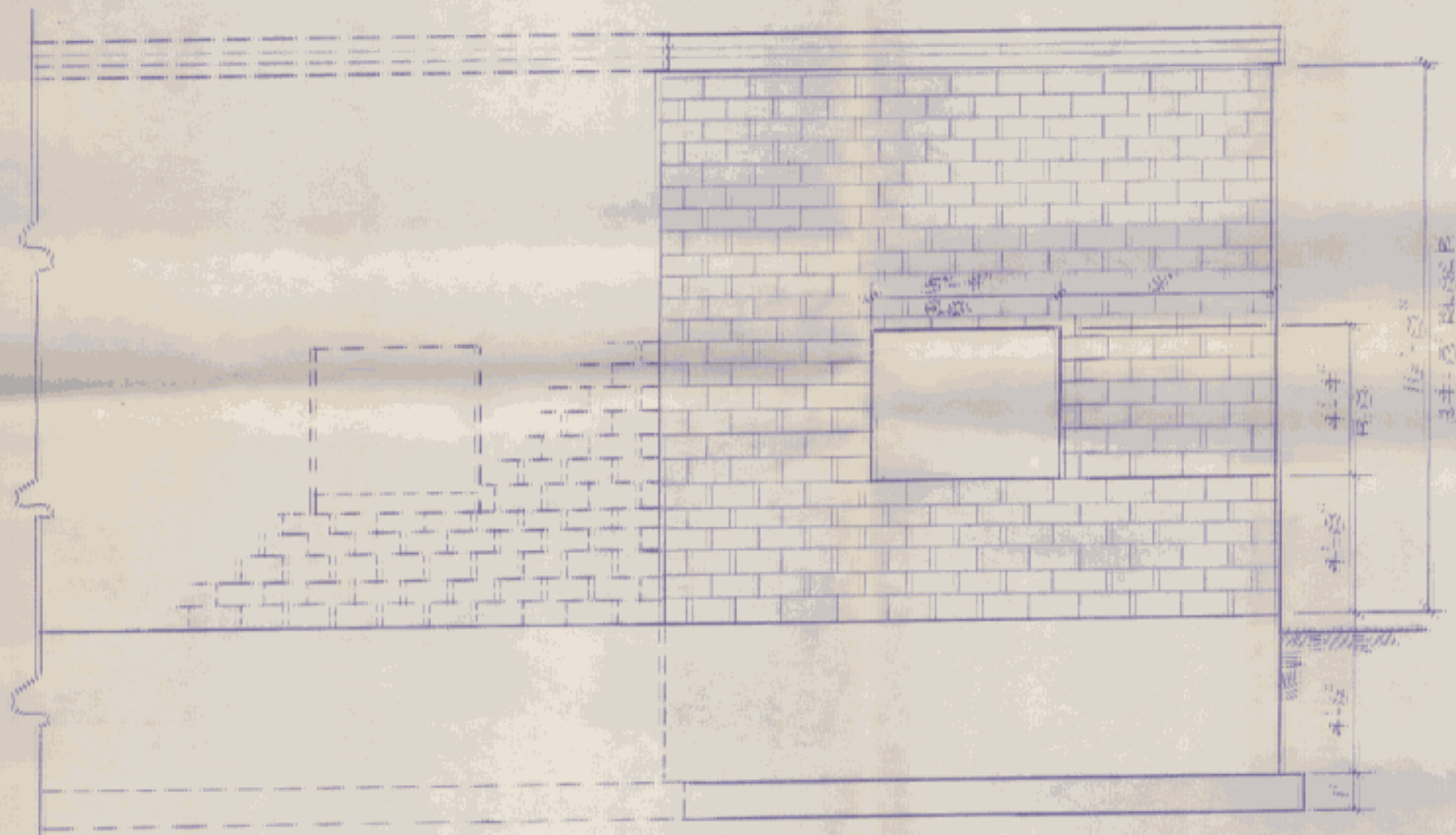


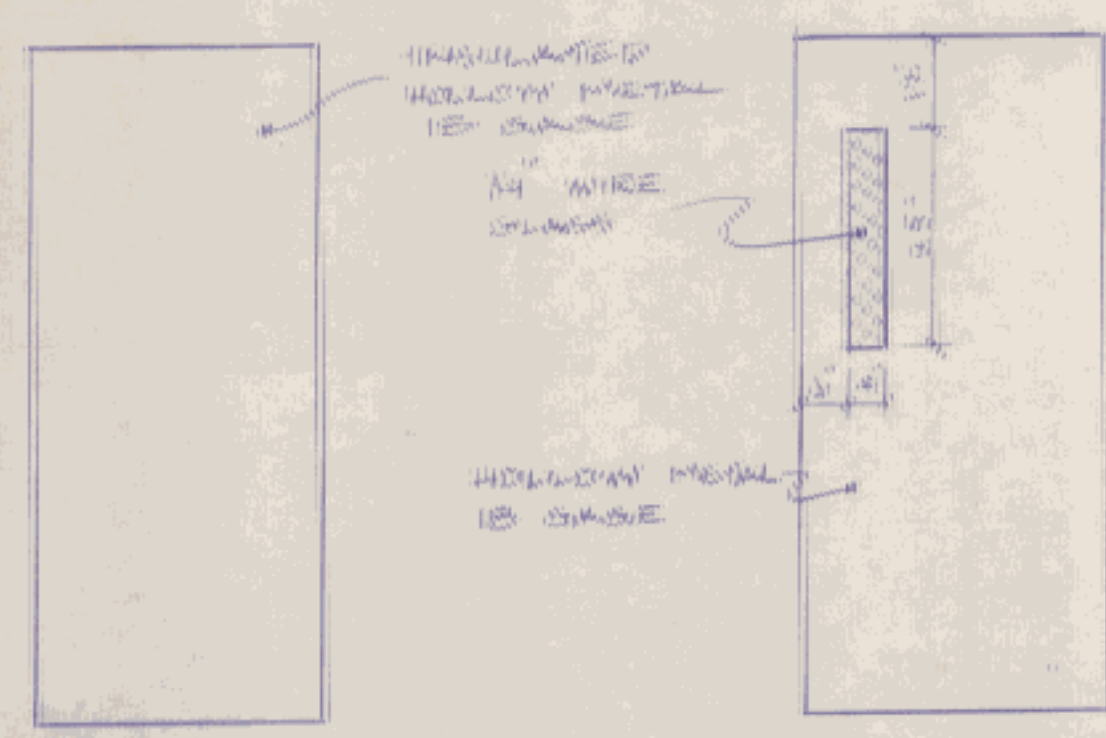
**FRONT ELEVATION**  
1/4" = 1'-0"



**PLAN**  
1/4" = 1'-0"



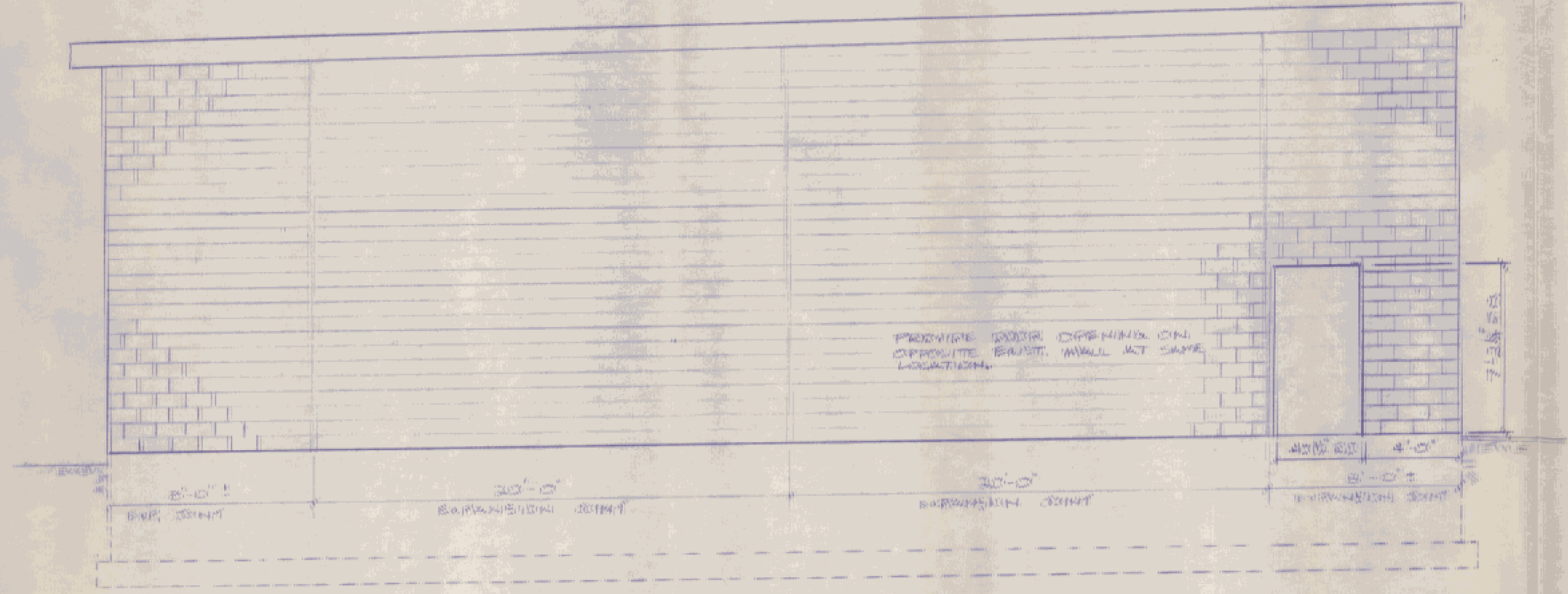
**REAR ELEVATION**  
1/4" = 1'-0"



**TYPE A**  
IMPERIAL DOOR  
TBF 34 THERMAL  
BREAK FRAME (1/2\"/>

**TYPE B**  
PRESENT DOOR  
SF 34 FRAME (1/2\"/>

NO.	GLD DOOR			GLD FRAME			COMMENTS
	TYPE	SIZE	FIN	TYPE	SIZE	FIN	
1	A	3'x7'6"	PTD	TBF 34	2'x8 1/2"	PTD	3/4\"/>
2	B	3'x7'6"	PTD		2'x8 1/2"	PTD	1/2\"/>



**END ELEVATION**  
1/4" = 1'-0"

STATE OF VERMONT  
DEPARTMENT OF STATE BUILDINGS  
AGENCY OF ADMINISTRATION  
MONTPELIER, VERMONT

PROPOSED ADDITION FOR  
A.O.T.  
RUTLAND HIGHWAY GARAGE

DATE: 3-10-87	SCALE: AS SHOWN	REVISIONS:	DWG NO. 3 OF 3
DRAWN BY: K. GIBSON	APPROVED BY: F. ROBERT		