

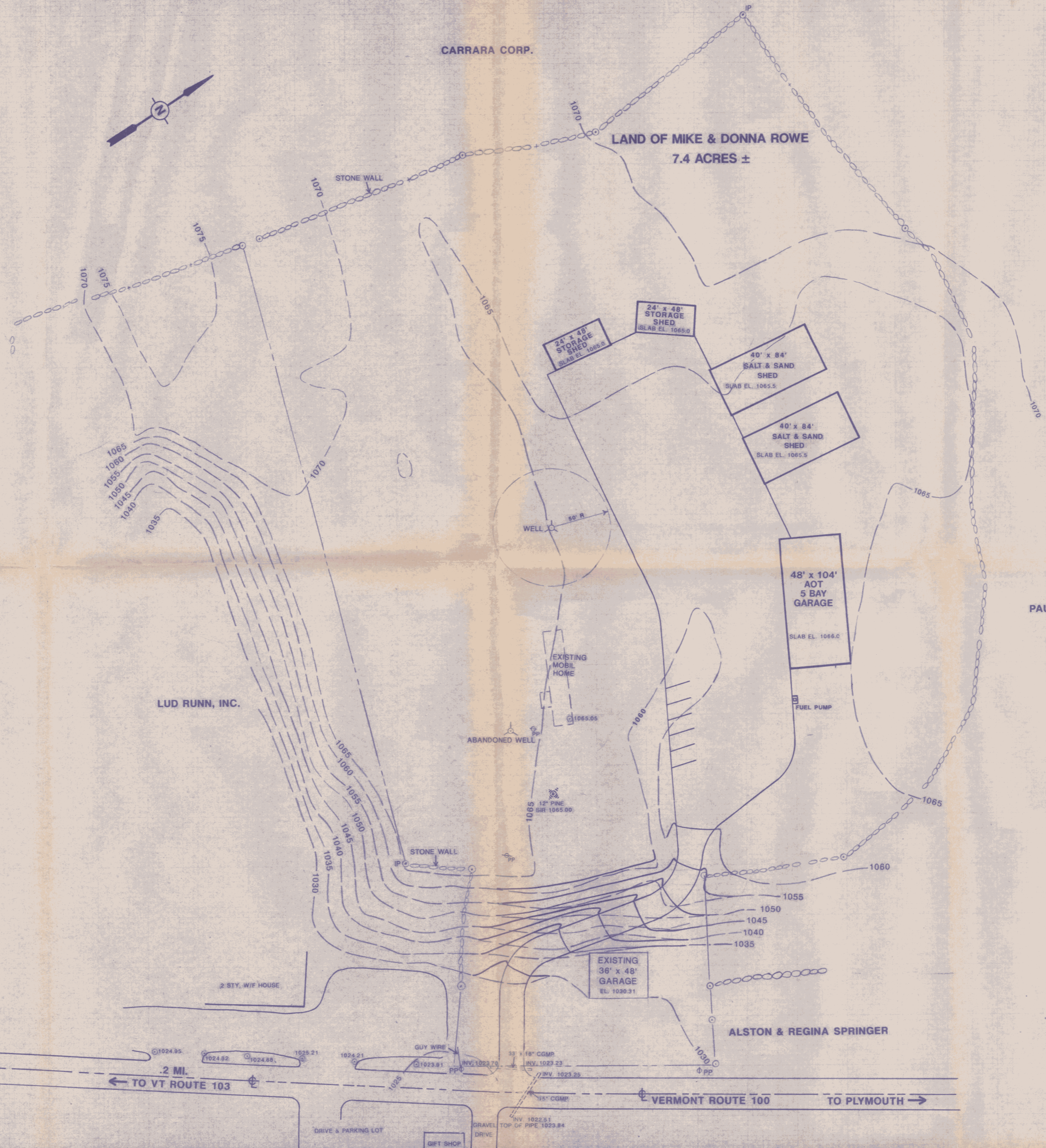
CARRARA CORP.

LAND OF MIKE & DONNA ROWE
7.4 ACRES ±

PAUL & THERESA PIERCE

LUD RUNN, INC.

ALSTON & REGINA SPRINGER



VT ROUTE 103

BMT-13 1032.66
N.W. COR.

← 2 MI. TO VT ROUTE 103

VERMONT ROUTE 100 TO PLYMOUTH →

STATE OF VERMONT
DEPARTMENT OF STATE BUILDINGS
AGENCY OF ADMINISTRATION
MONTPELIER, VERMONT

SITE PLAN
VERMONT AGENCY OF TRANSPORTATION
MAINTENANCE GARAGE

LUDLOW, VERMONT

DATE: APRIL 21, 1993	SCALE: 1" = 40'-0"	REVISIONS:	DWG. NO. SD-1
DRAWN BY: A. POULIN	APPROVED BY: [Signature]		OF