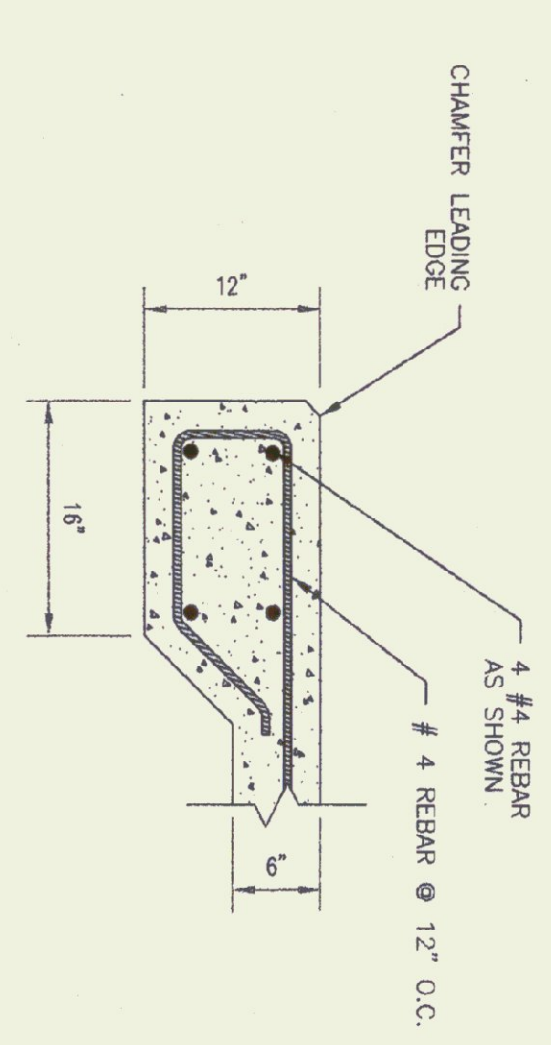


ALL DOOR COMPONENTS TO BE ASSEMBLED USING APPROPRIATELY SIZED GALVANIZED SCREWS.

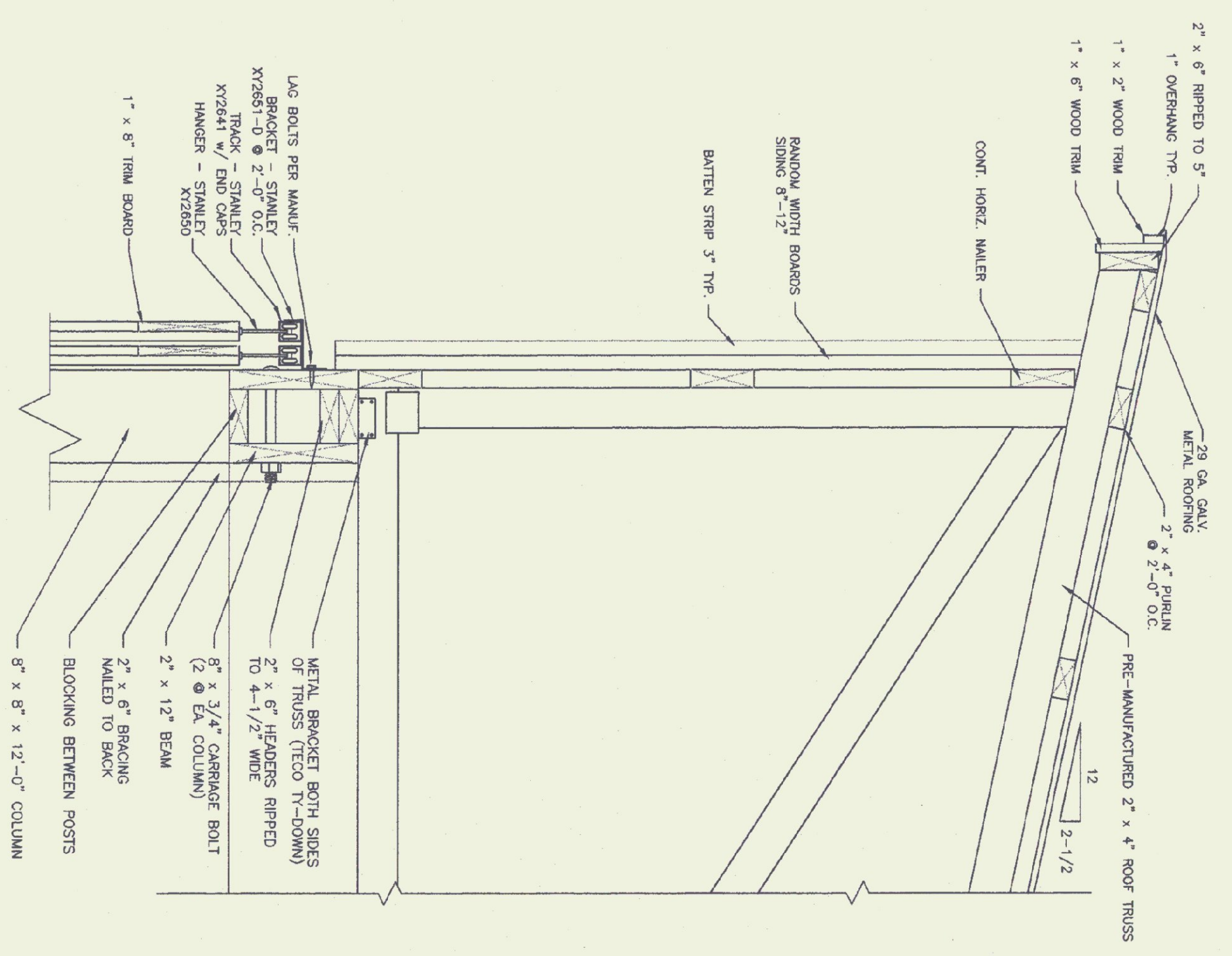


POST BASE
N.T.S.



SLAB DETAIL
N.T.S.

TRUSS DETAIL
N.T.S.



NOTES

TRUSS NOTES:

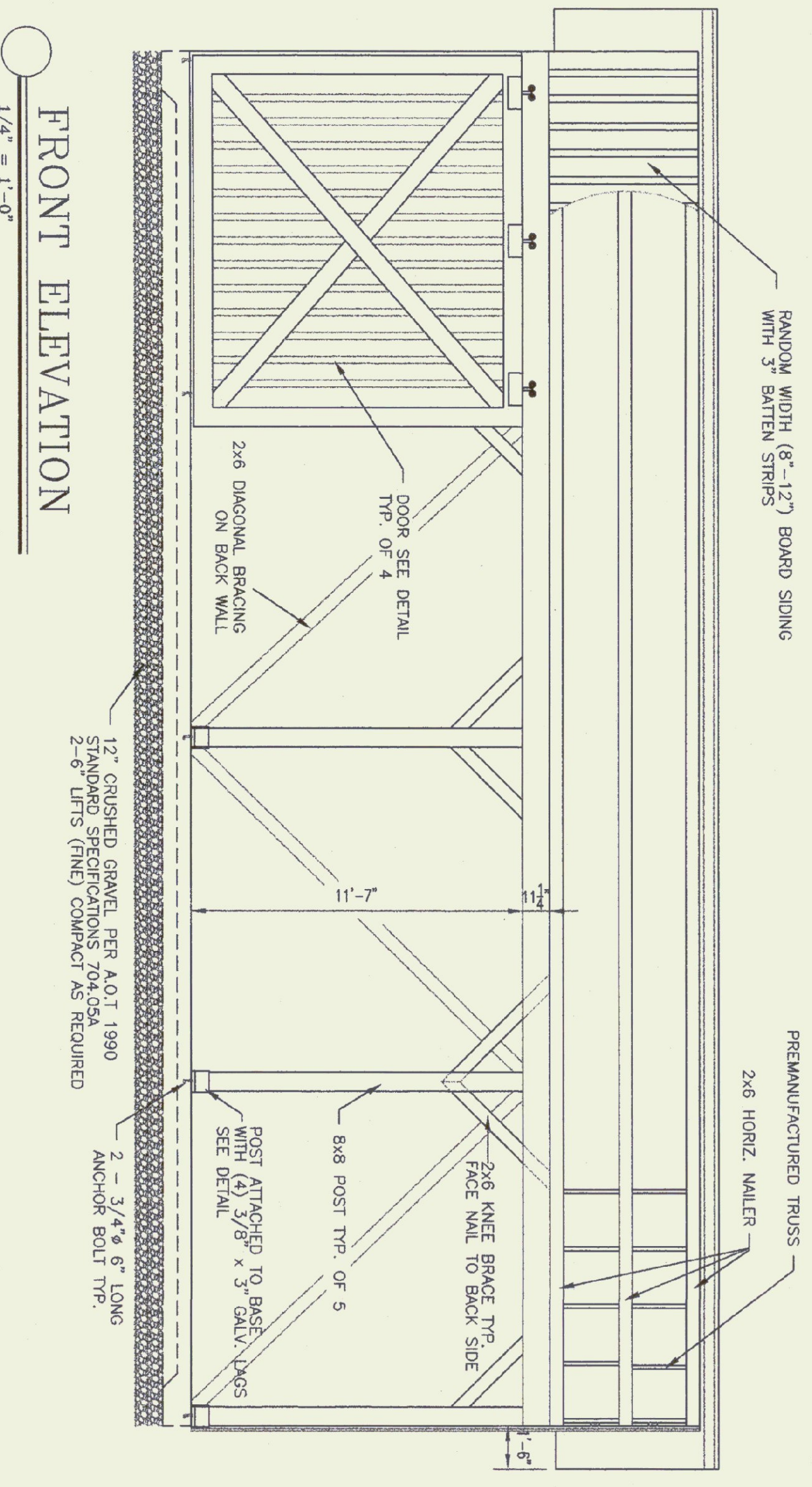
- TRUSS MANUFACTURER TO PROVIDE DEPT. OF STATE BUILDINGS ENGINEER A SET OF ENGINEERED & STAMPED DRAWINGS FOR APPROVAL PRIOR TO TRUSS MANUFACTURE.
- TRUSS MANUFACTURER TO PROVIDE THE CONTRACTOR WITH ALL NECESSARY INSTRUCTIONS FOR PROPER TRUSS INSTALLATION, ANCHORAGE, BRACING, LIFTING, ETC.
- TRUSS DESIGN LOADS IN ACCORDANCE WITH THE 1987 B.O.C.A. FOR VERMONT.
- MINIMUM LOADS: PER 1987 B.O.C.A. FOR VI. (60 PSF MIN.)
- LIVE - AS CALCULATED FROM TRUSS & ROOF MATERIALS
- DEAD - 5 PSF ON BOTTOM CHORD.
- WIND - 25 PSF
- DIAGONAL WIND BRACING PER TRUSS MANUFACTURER.

LUMBER NOTES:

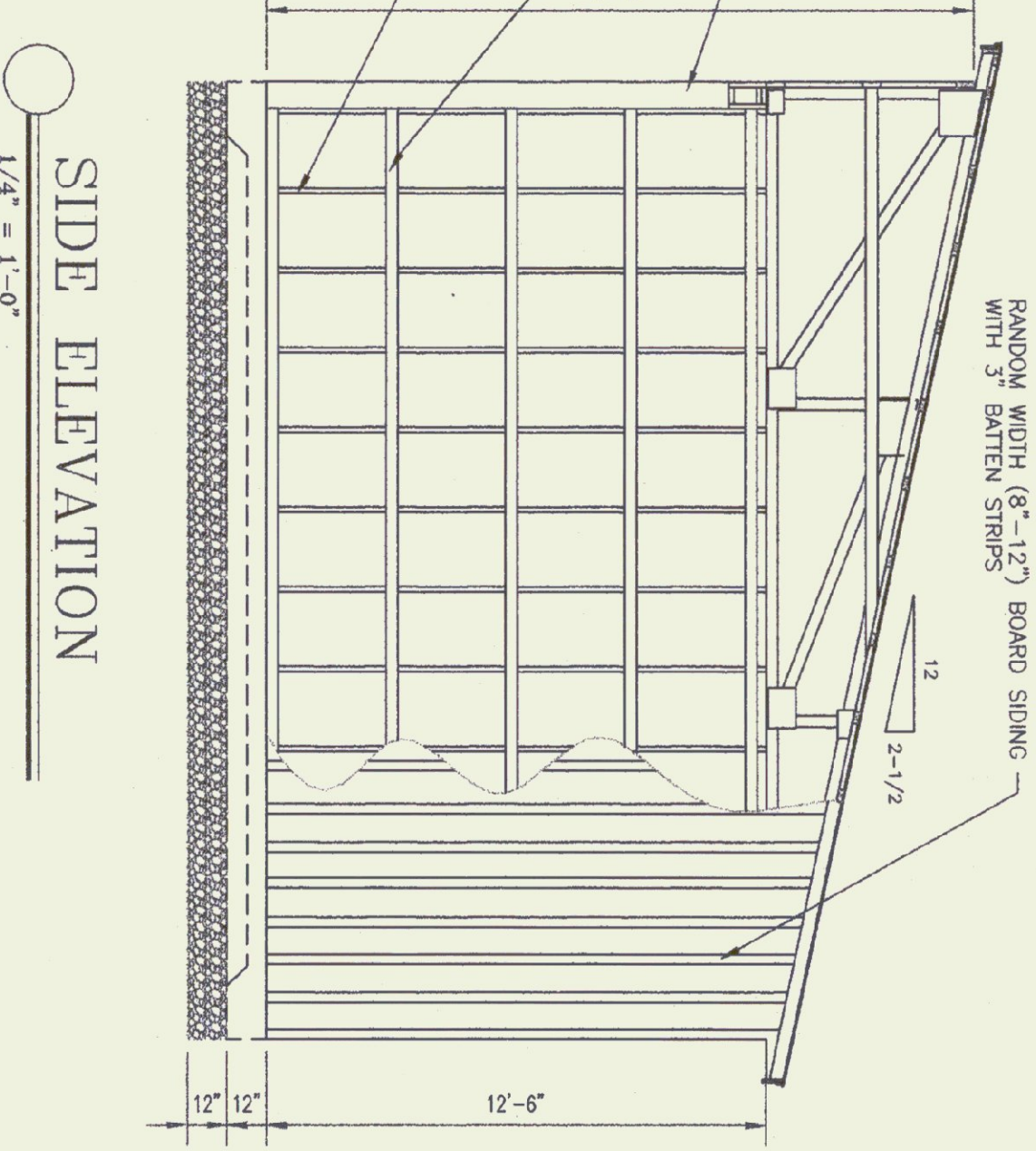
- FRAMING MEMBERS TO BE KILN DRIED CONSTRUCTION GRADE SPRUCE S4S 19% MOISTURE CONTENT.
- PLATES & NAILERS IN CONTACT WITH CONCRETE TO BE CCA 40 TREATED.
- BOARDS & BATTEN SIDING TO BE NATIVE ROUGH SAWN WHITE PINE, SPRUCE, OR EASTERN FIR
- BOARDS TO BE RANDOM WIDTH 8'-12\"/>
- BOARD SIDING AND BATTEN STRIPS TO BE FULL LENGTH (NO HORIZONTAL JOINTS).
- ALL WALLS TO BE GALVANIZED.

FINISH NOTES:

- ALL BOARDS & BATTENS TO BE STAINED WITH ONE COAT (ALL SURFACES) PRIOR TO INSTALLATION.
- AFTER INSTALLATION EXTERIOR SIDING TO RECEIVE ONE ADDITIONAL COAT OF STAIN.
- STAIN TO BE SHERWIN WILLIAMS #3535 FOLIAGE GREEN OR EQUAL. FIRST COAT TO BE SEMI-TRANSPARENT AND THE SECOND COAT TO BE HIGH PIGMENT STAIN.



FRONT ELEVATION
1/4\"/>



SIDE ELEVATION
1/4\"/>

| | | |
|------------------|------------------------------|-------------------------|
| SB-1 26 OF 30 | SCALE: AS NOTED | REVISIONS |
| | DATE: AUG 1998 | LUDLOW |
| | DRAWN BY: G. D. NORWOOD | LUDLOW A.O.T. |
| | APPR. BY: <i>[Signature]</i> | 24' x 48' STORAGE PLANS |

LUDLOW A.O.T.
24' x 48' STORAGE BUILDING
PLANS & DETAILS
LUDLOW, VERMONT

STATE OF VERMONT
Department of Buildings and General Services
Agency of Administration
Montpelier, Vermont