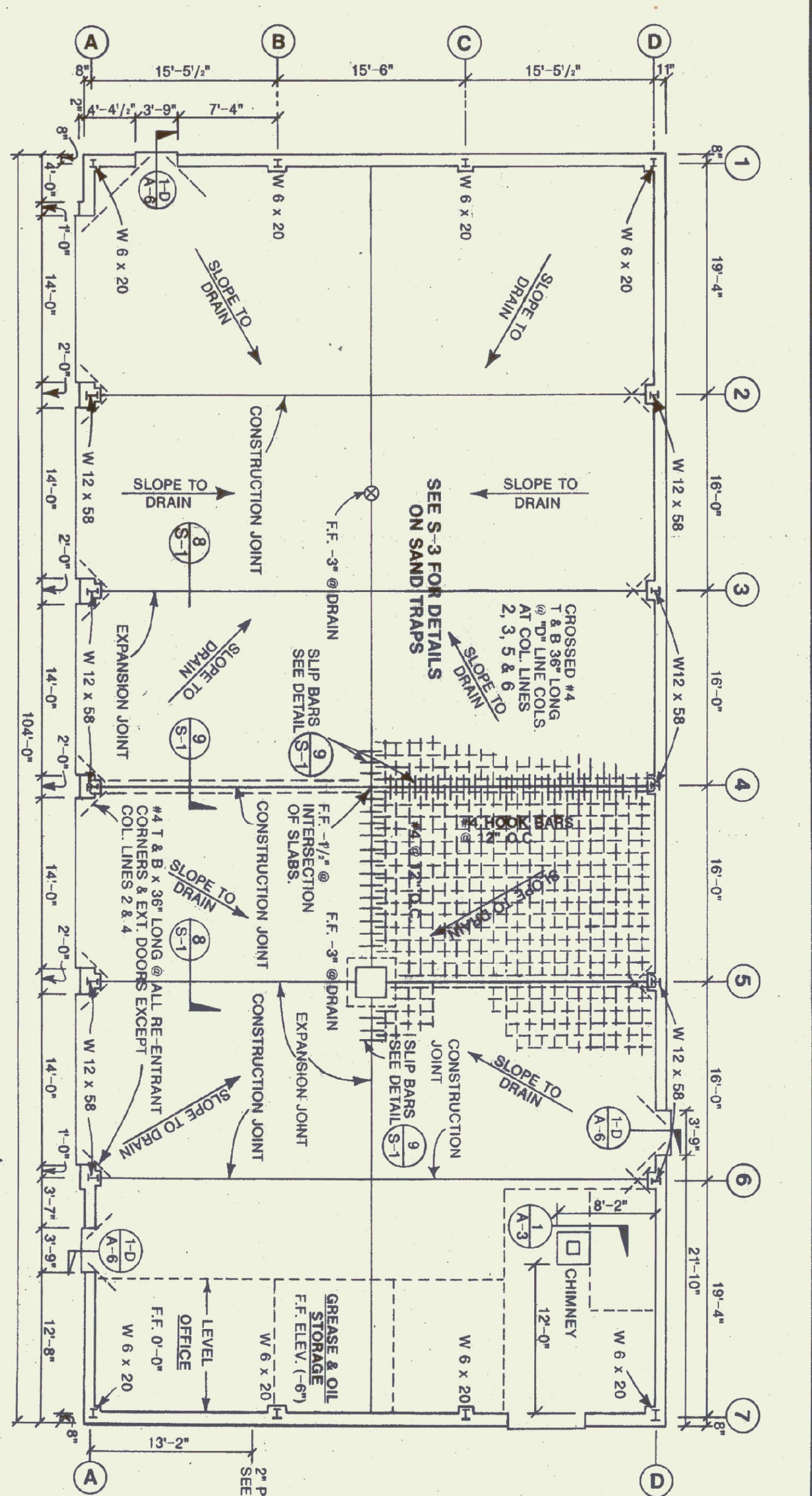


**ROOF FRAMING PLAN**  
SCALE: 1/8" = 1'-0"

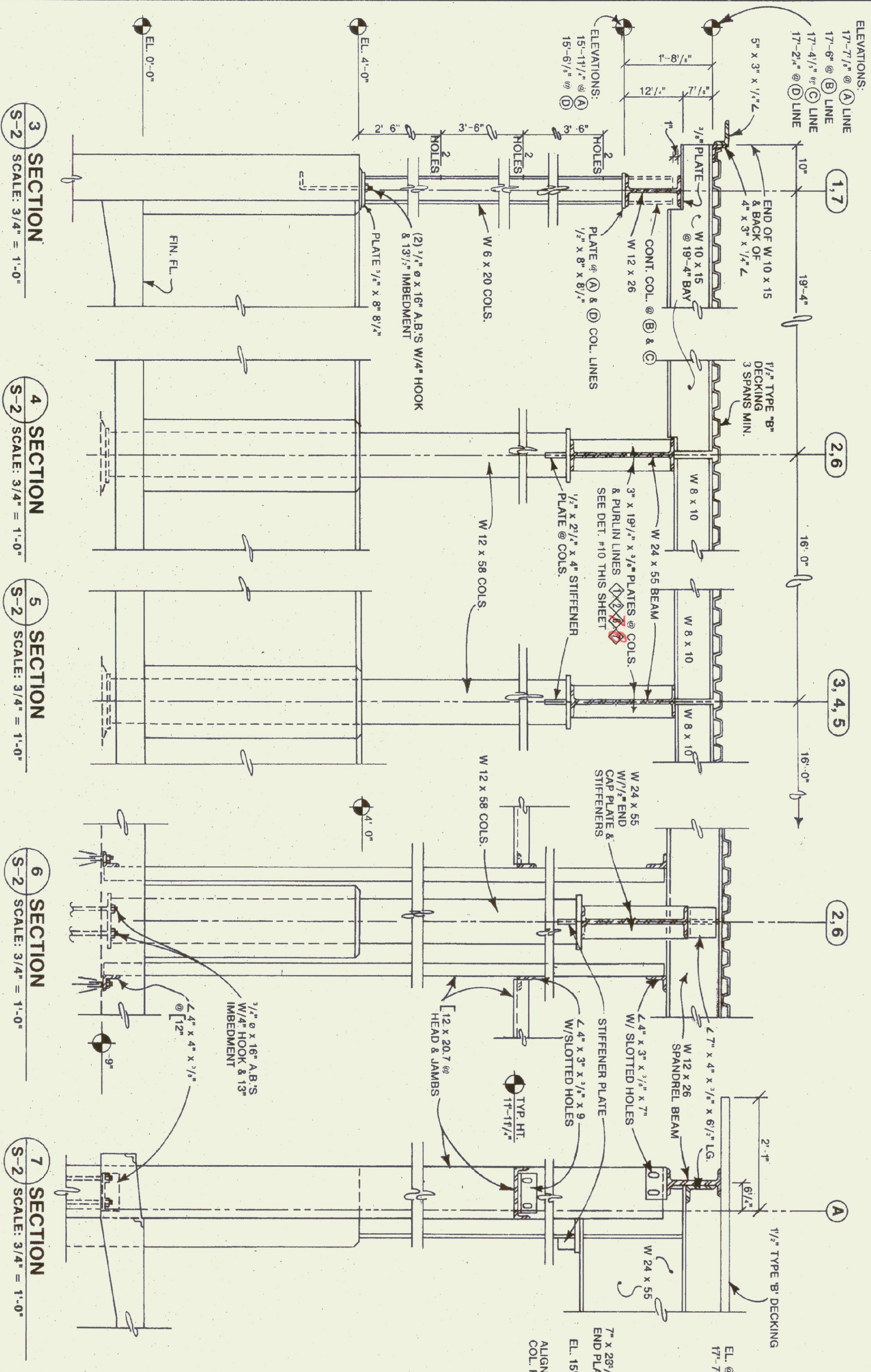
**NOTES:**  
(1) SLAB CONSTRUCTION JOINT/EXPANSION JOINT PATTERN REQUIRES AN ALTERNATING AREA (CHECKER BOARD) POURING SEQUENCE FOR GARAGE FLOOR.  
(2) SLABS @ EXTERIOR PEOPLE & OVERHEAD DOORS EXTEND 2' BEYOND FACE OF FOUNDATION.



**PLAN**  
SCALE: 1/8" = 1'-0"

**LOADING NOTES:**  
(1) SNOW LOAD = 50#/S.F.  
(2) DEAD LOAD = 20#/S.F. FOR ROOF  
(3) DEAD LOAD = 20#/S.F. @ WALLS  
(4) WIND LOAD = 100#/S.F. FLOOR

**BASE PLATE NOTES:**  
@ COL. LINES #1 & 7 BOT. OF BASE PLATES @ -4'-0 1/2"  
@ COL. LINES #2, 3, 4, 5 & 6 BOT. OF BASE PLATES @ -8 1/2"  
**MISC. NOTES:**  
CHANNELS FOR GARAGE DOORS (5 DOORS TOTAL) ARE NOT SHOWN ON FRAMING PLAN.



**SECTION 1.7**  
SCALE: 3/4" = 1'-0"

**SECTION 2.6**  
SCALE: 3/4" = 1'-0"

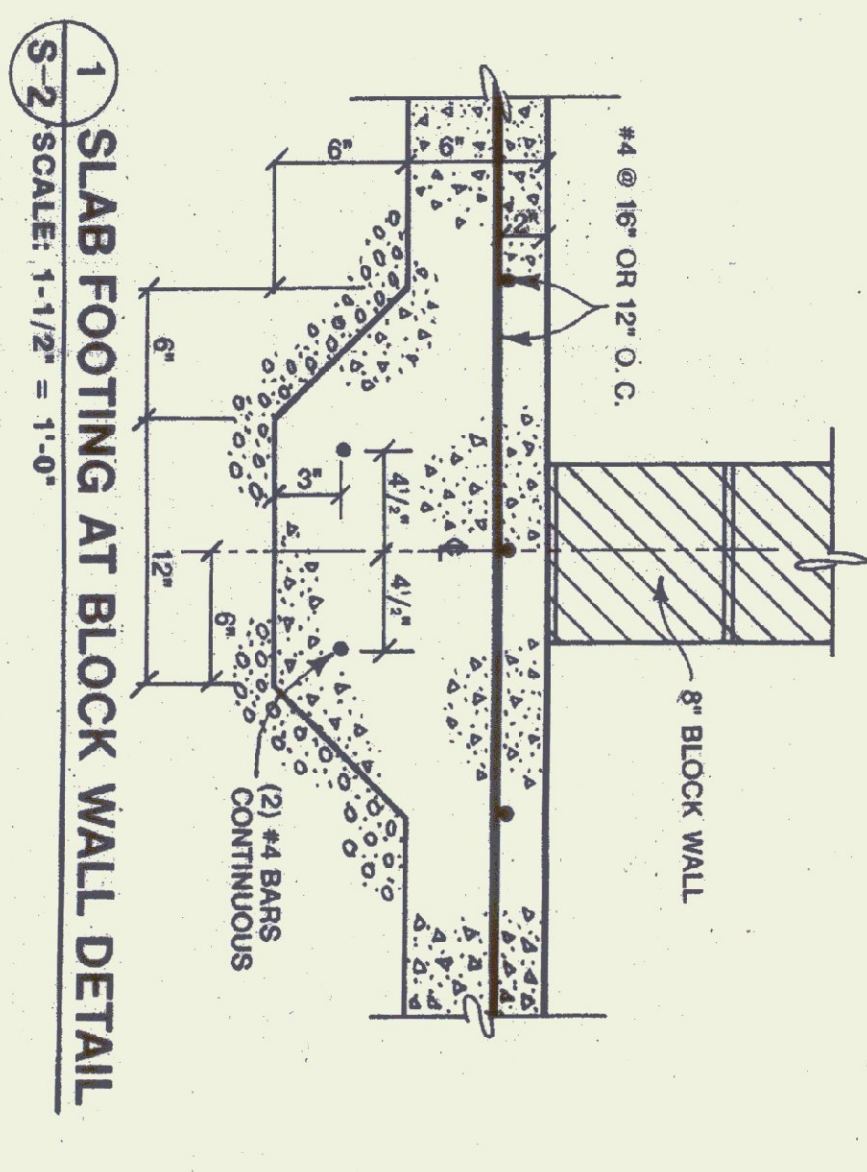
**SECTION 3, 4, 5**  
SCALE: 3/4" = 1'-0"

**SECTION 6**  
SCALE: 3/4" = 1'-0"

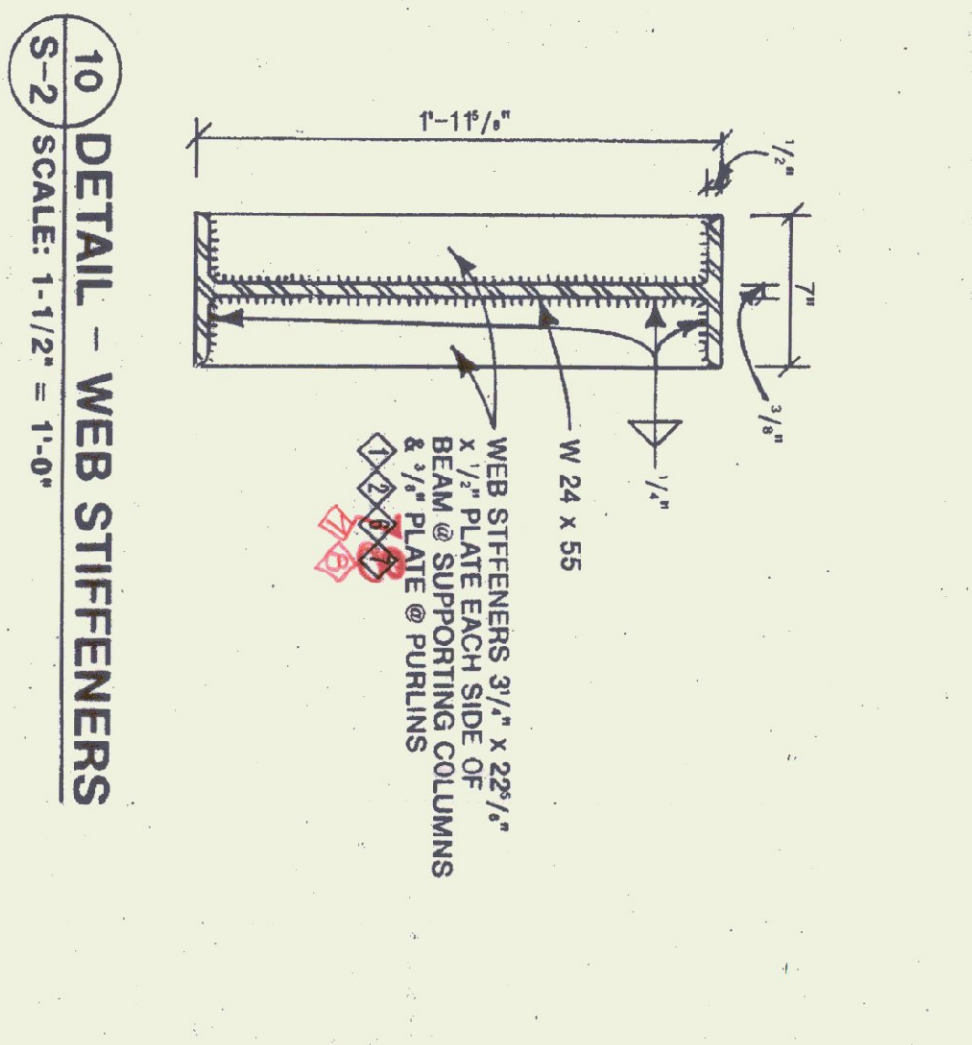
**SECTION 7**  
SCALE: 3/4" = 1'-0"

**SECTION @ COL. LINE 'A' 2-5**  
SCALE: 3/4" = 1'-0"

**SECTION @ COL. LINE 'D' 2-5**  
SCALE: 3/4" = 1'-0"



**1 SLAB FOOTING AT BLOCK WALL DETAIL**  
SCALE: 1-1/2" = 1'-0"



**10 DETAIL - WEB STIFFENERS**  
SCALE: 1-1/2" = 1'-0"

STATE OF VERMONT  
DEPARTMENT OF STATE BUILDINGS  
AGENCY OF ADMINISTRATION  
MONTPELIER, VERMONT

VERMONT AGENCY OF TRANSPORTATION  
STRUCTURAL STEEL FRAMING @ ROOF & STEEL SECTIONS & CONCRETE DETAILS  
5 BAY MAINTENANCE GARAGE  
VERMONT

LUDLOW,  
DATE: Aug. 1998  
DRAWN BY: A. POULIN

SCALE: AS NOTED  
APPROVED BY:

REVISIONS:  
DWG. NO. S-2  
23 OF 30