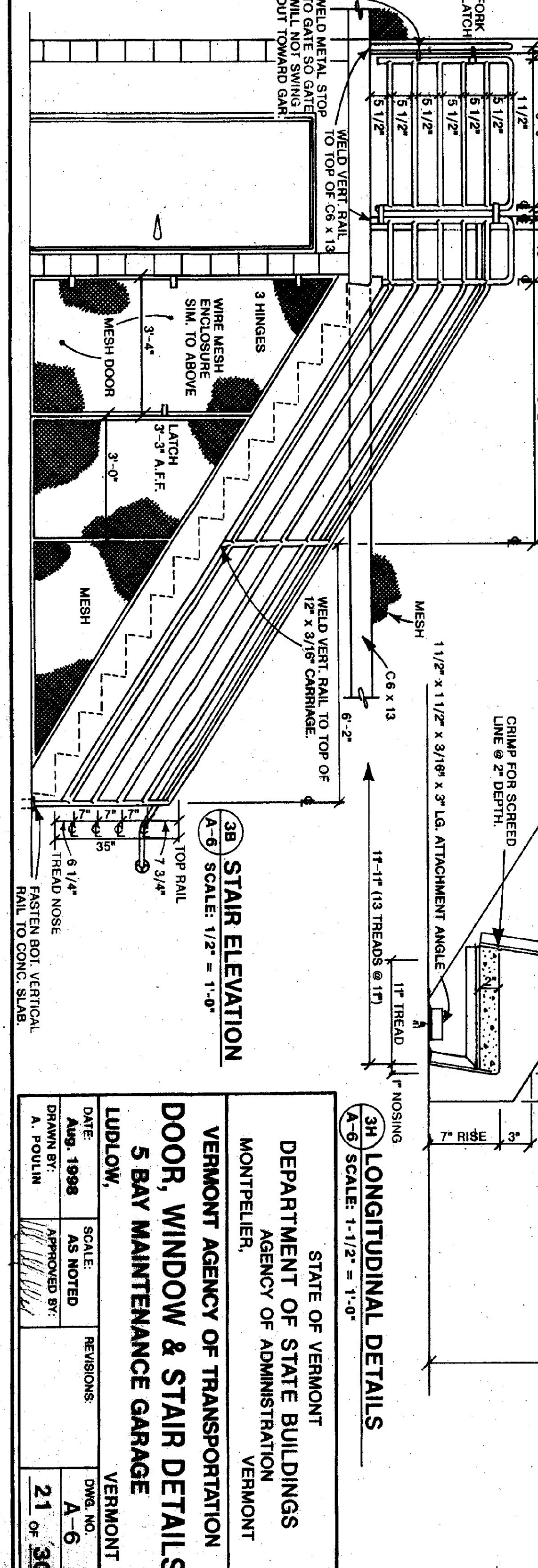
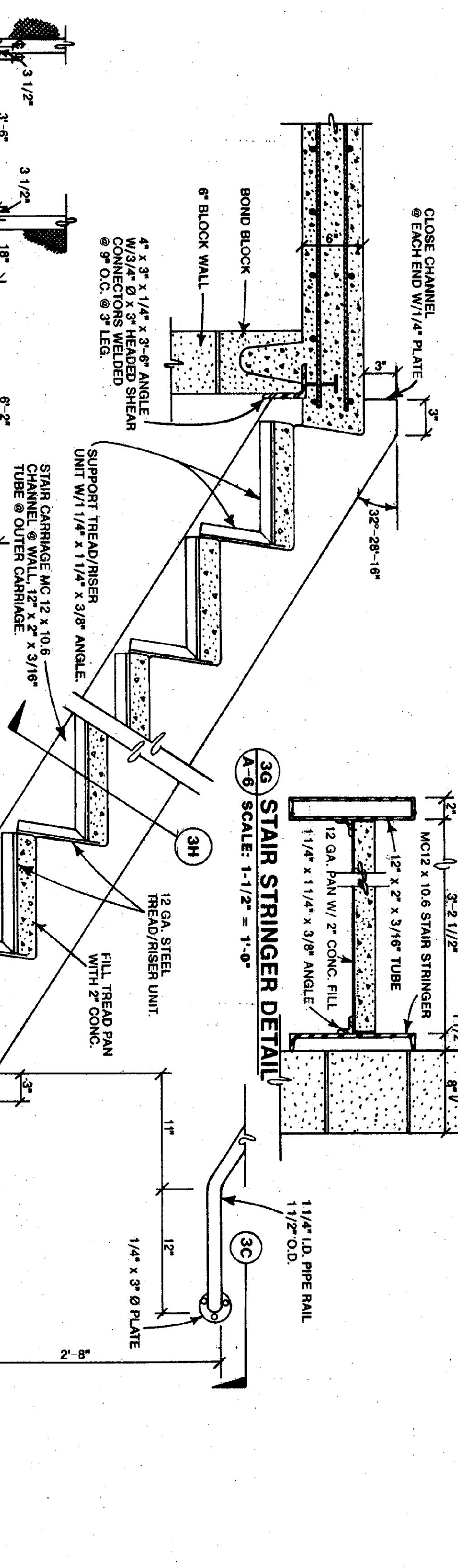
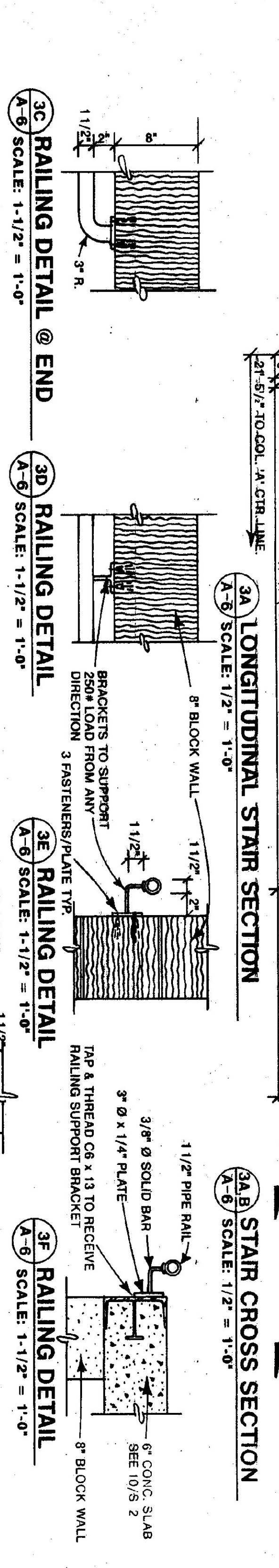
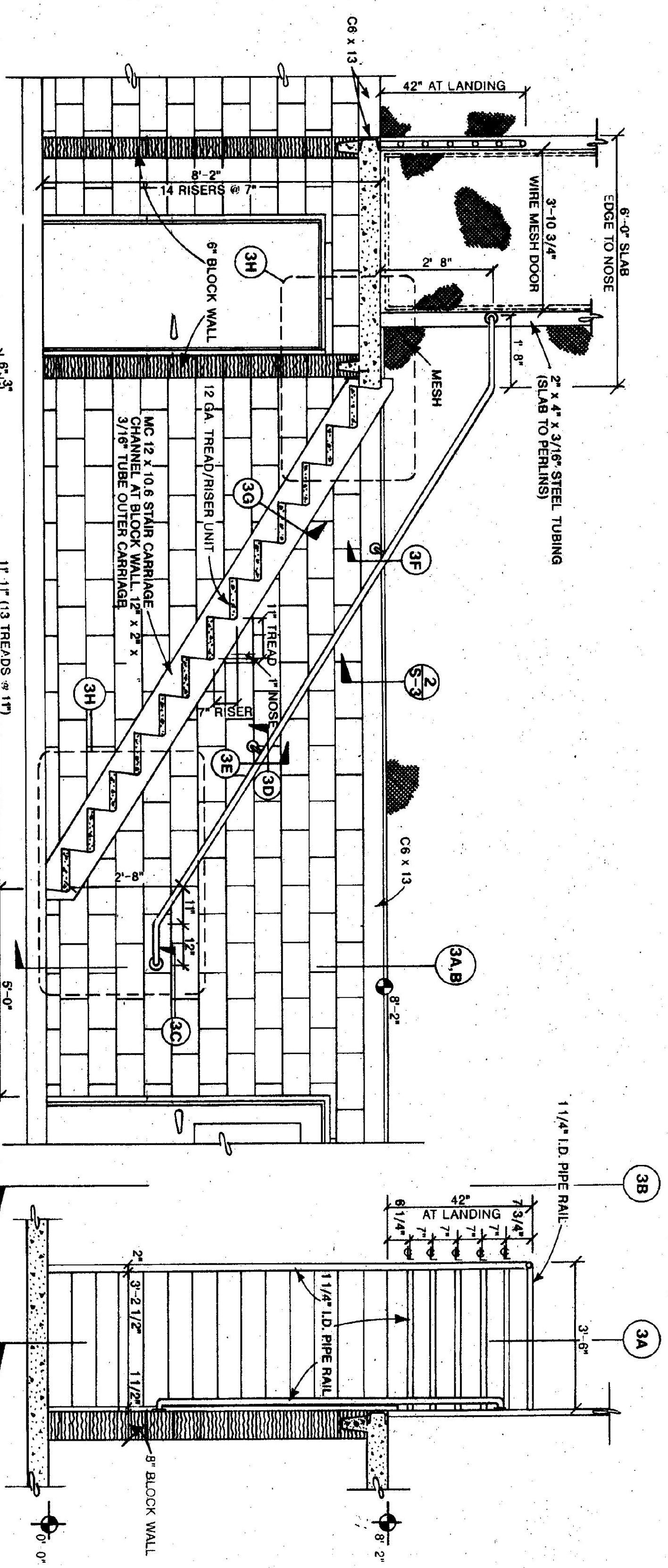
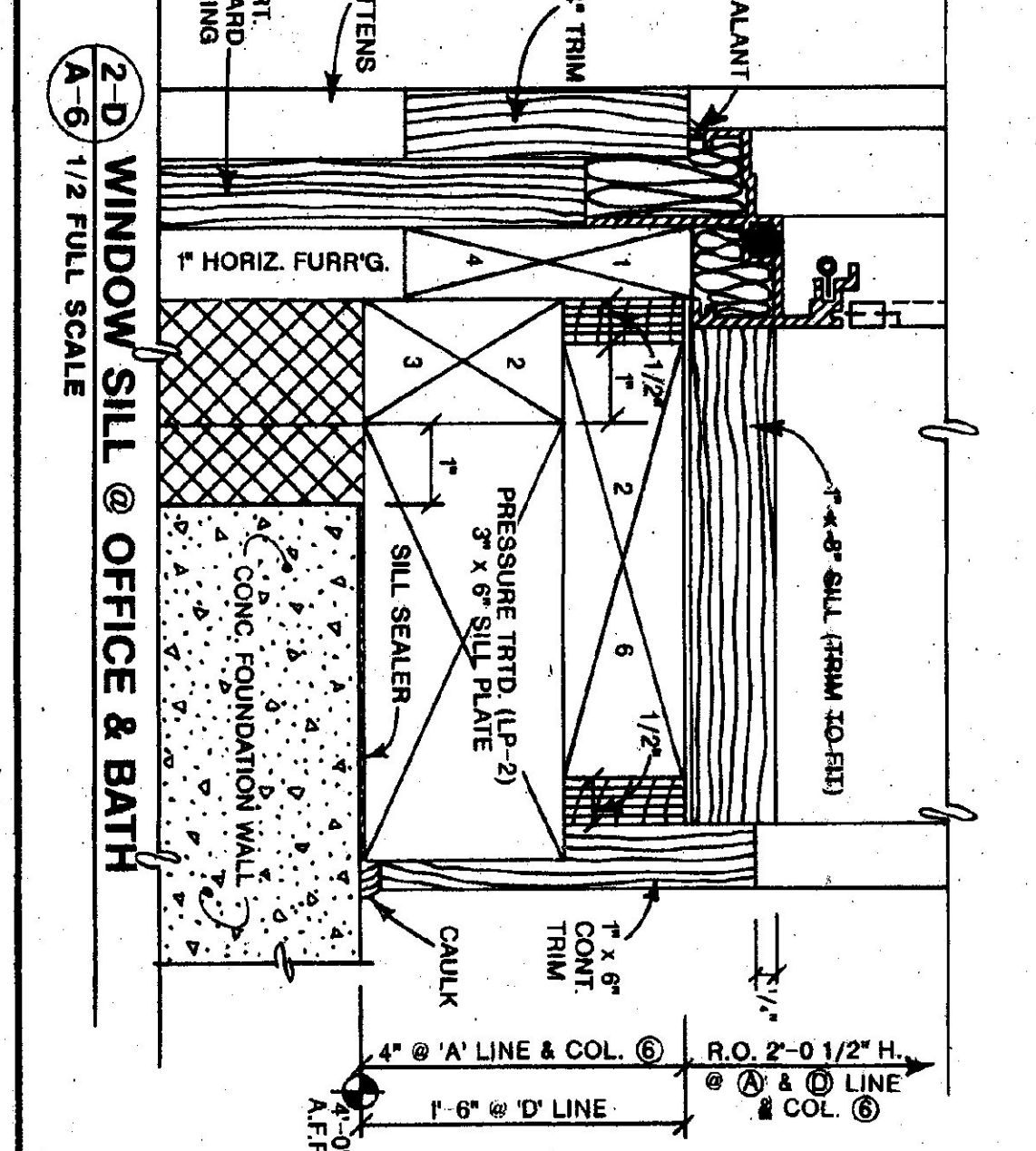
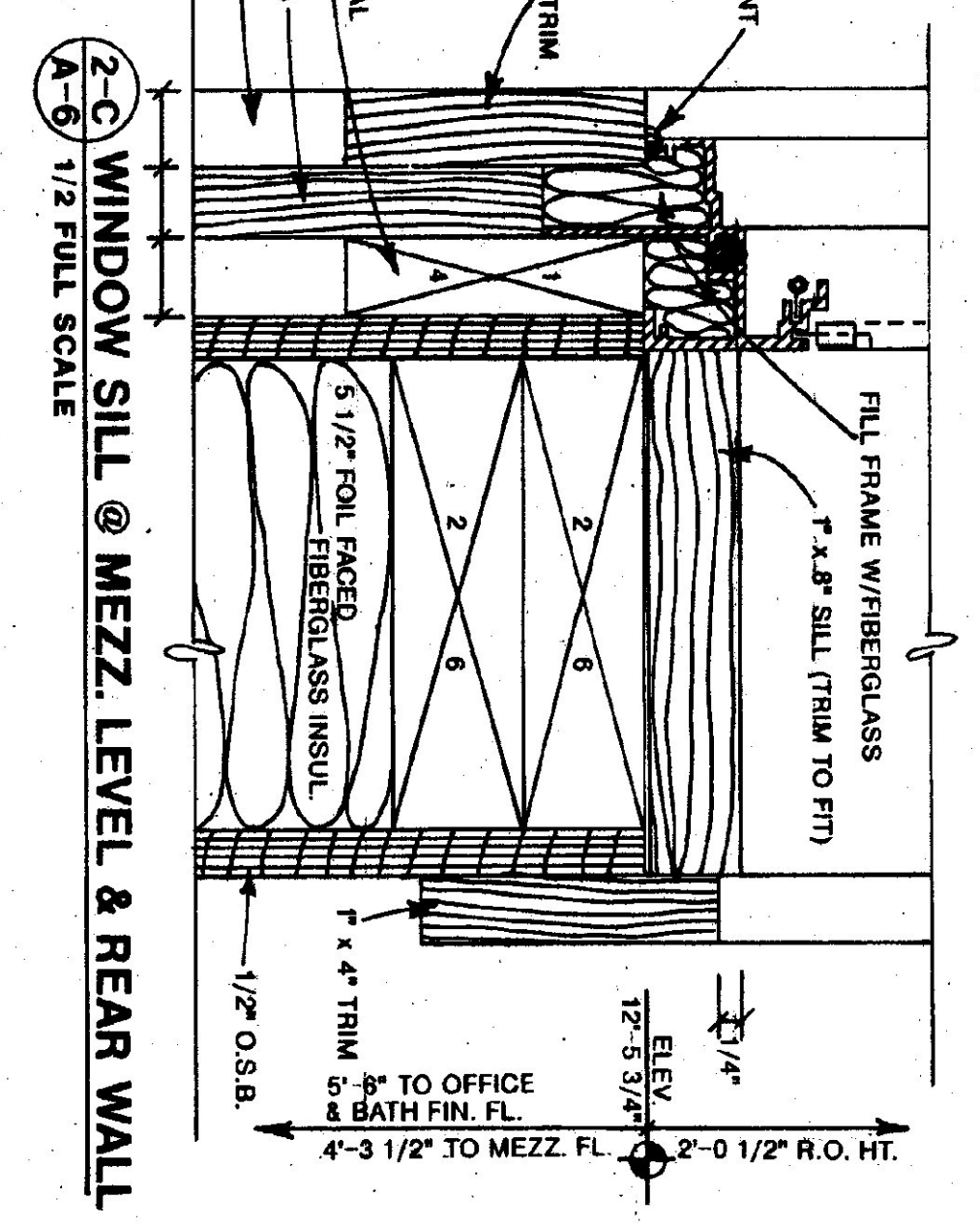
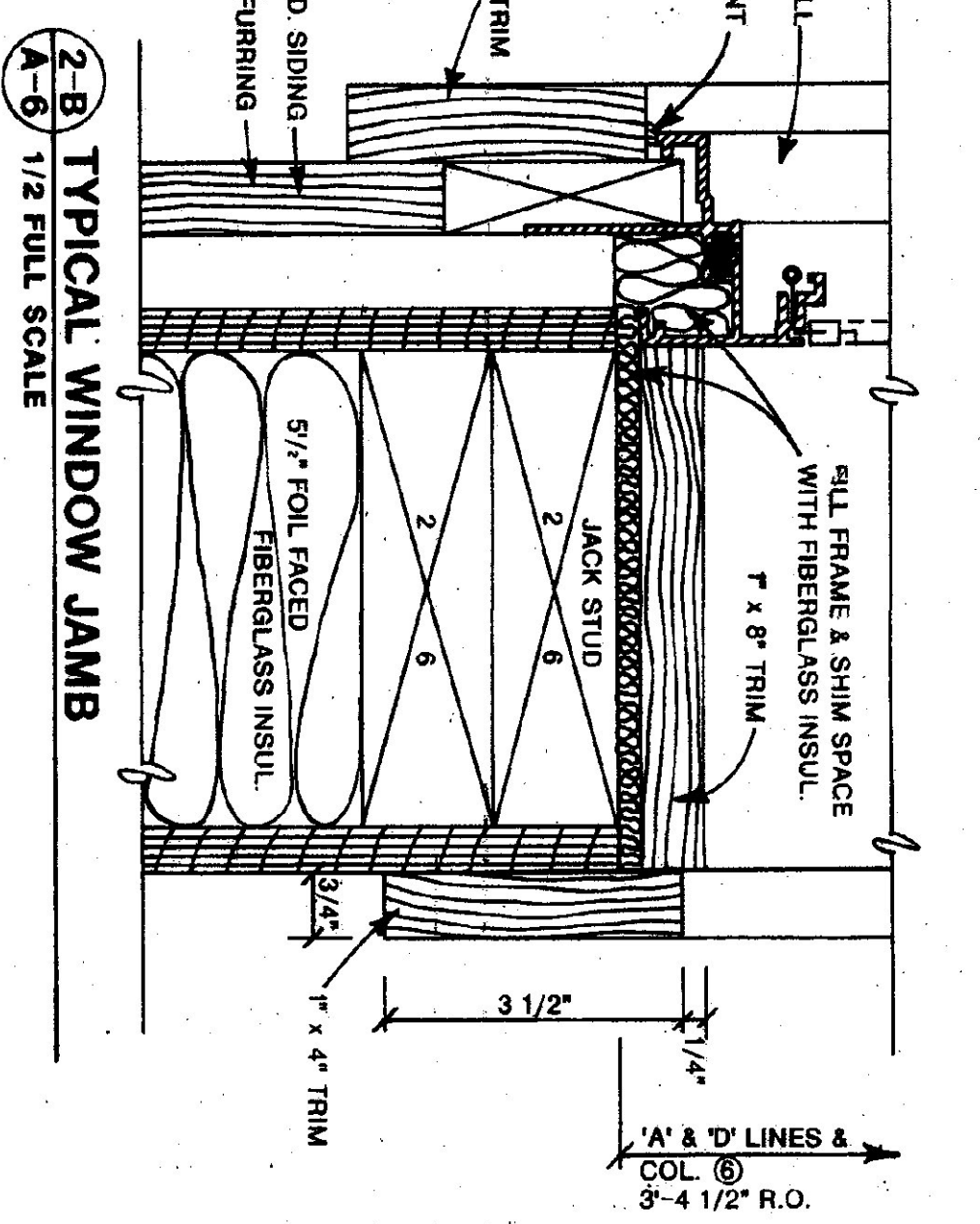
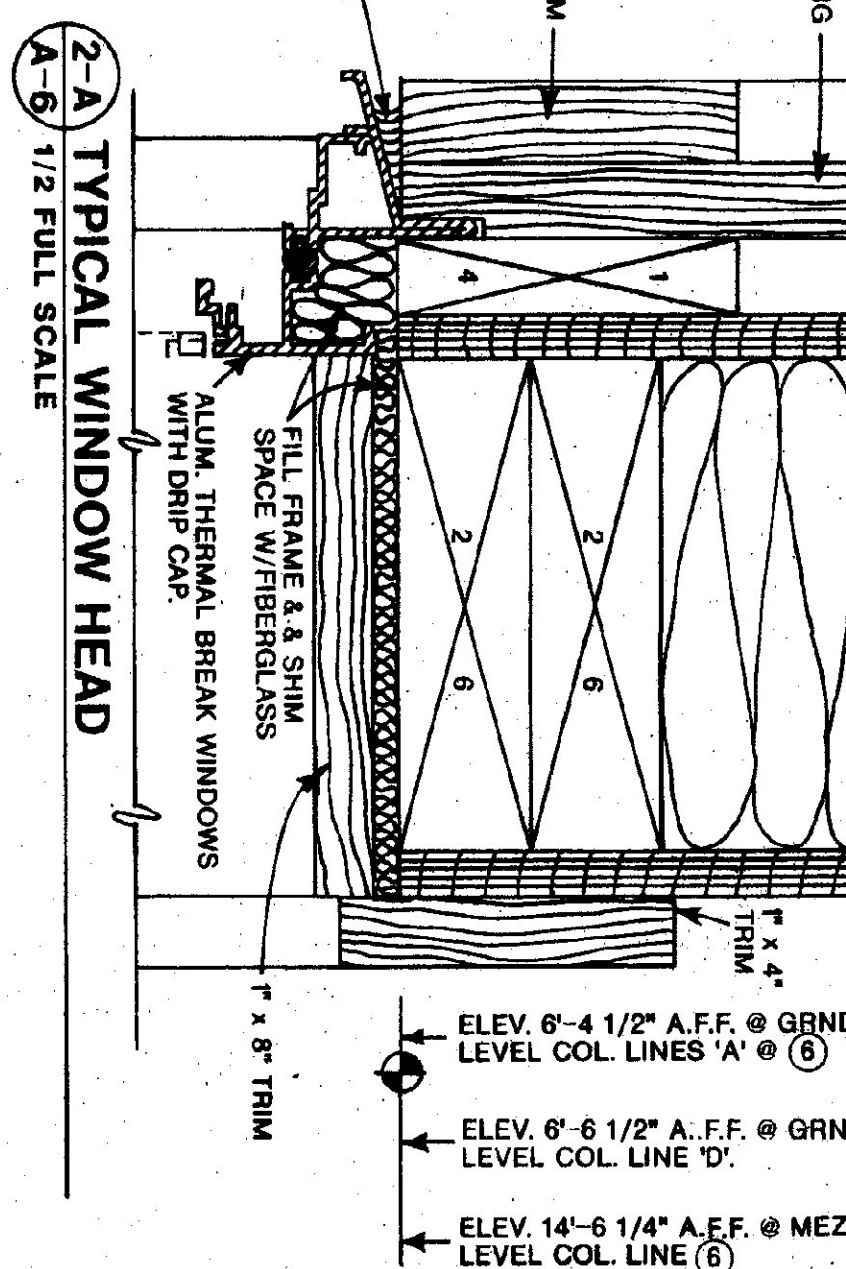
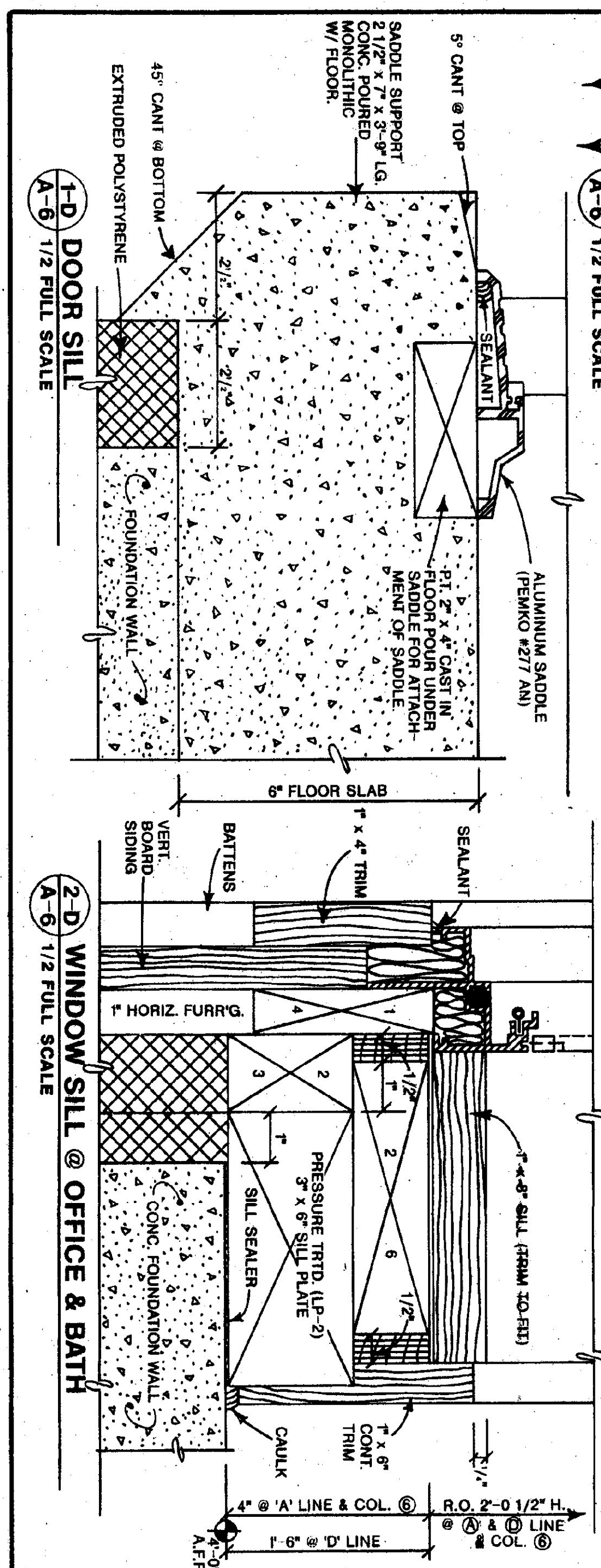
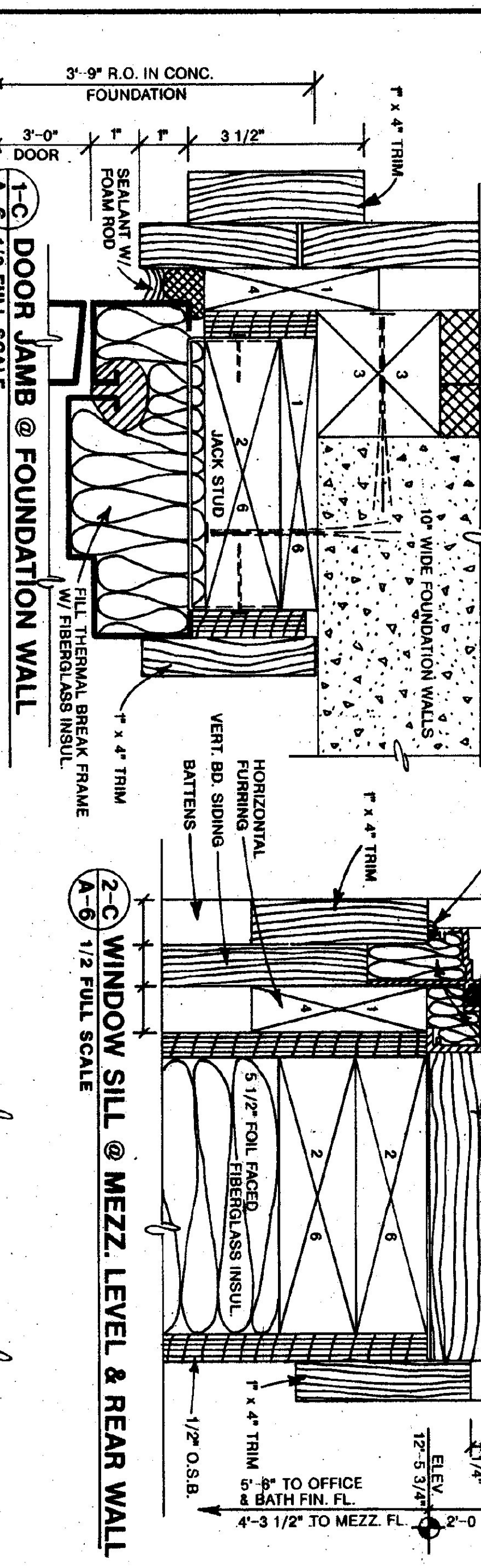
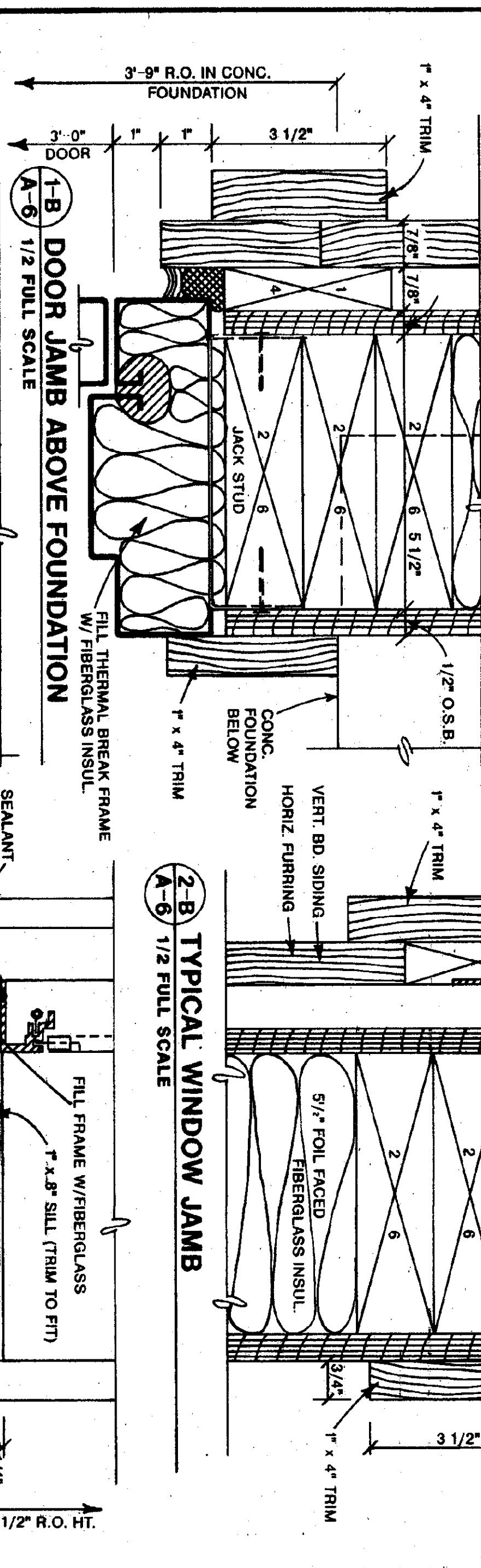
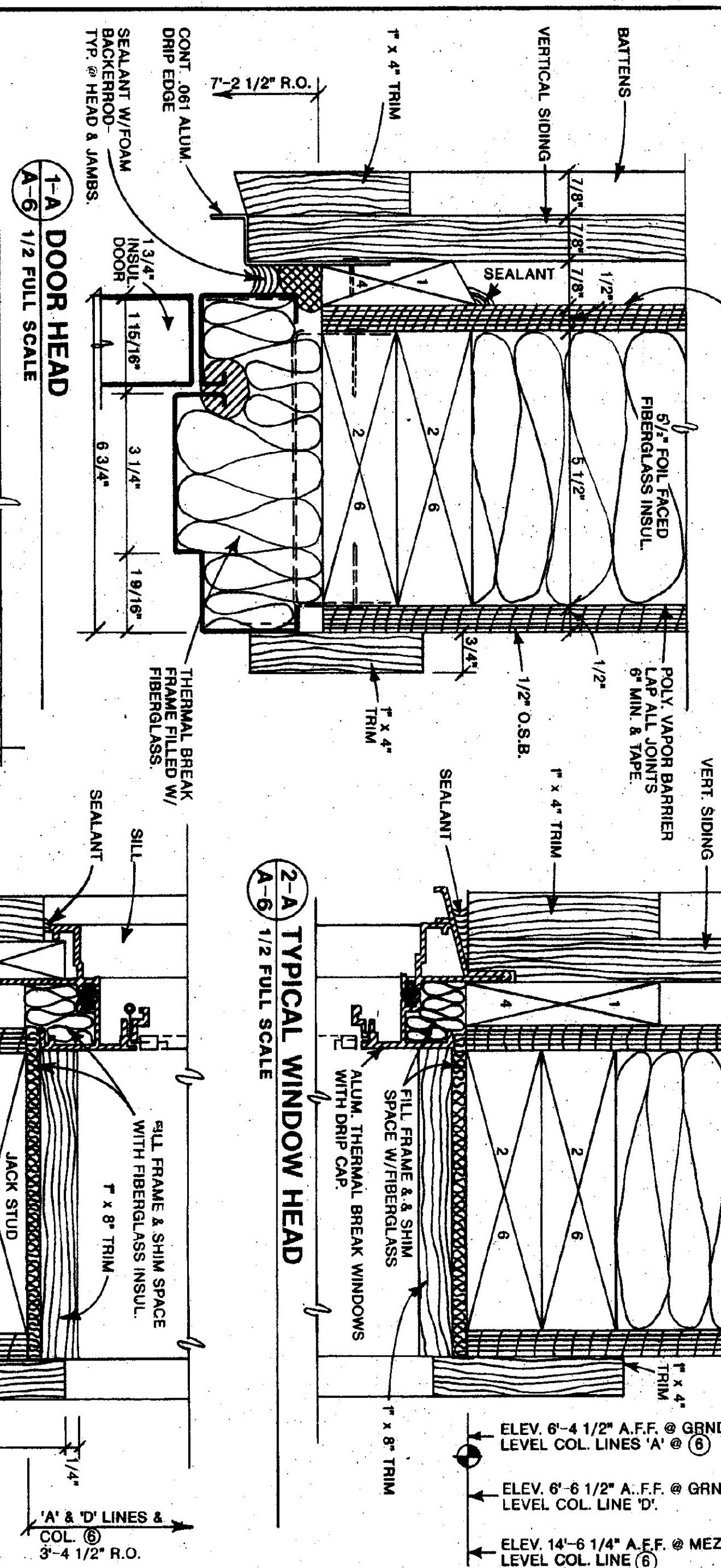


TYVEK WIND INFILTRATION FABRIC OVER HORIZONTALLY APPLIED 1/2" APA RATED EXTERIOR PLYWOOD SHEATHING.



VERMONT AGENCY OF TRANSPORTATION
STATE OF VERMONT
DEPARTMENT OF STATE BUILDINGS
AGENCY OF ADMINISTRATION
MONTPELIER, VERMONT

DOOR, WINDOW & STAIR DETAILS
5 BAY MAINTENANCE GARAGE
LUDLOW, VERMONT

DATE:	Aug. 1998	SCALE:	AS NOTED	REVISIONS:	DWG. NO.
DRAWN BY:	A. POUTLIN	APPROVED BY:			A-6
					21 OF 36