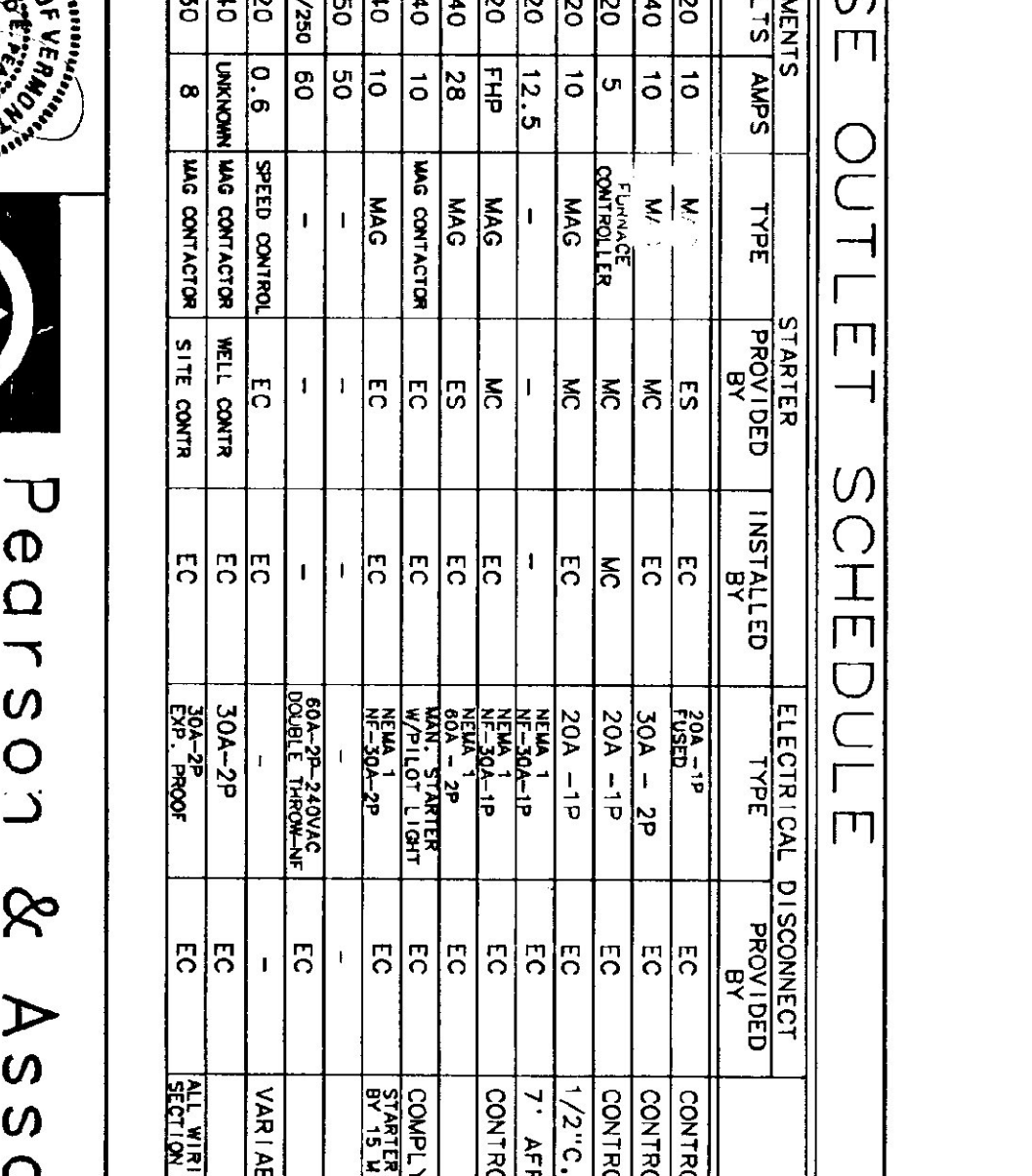
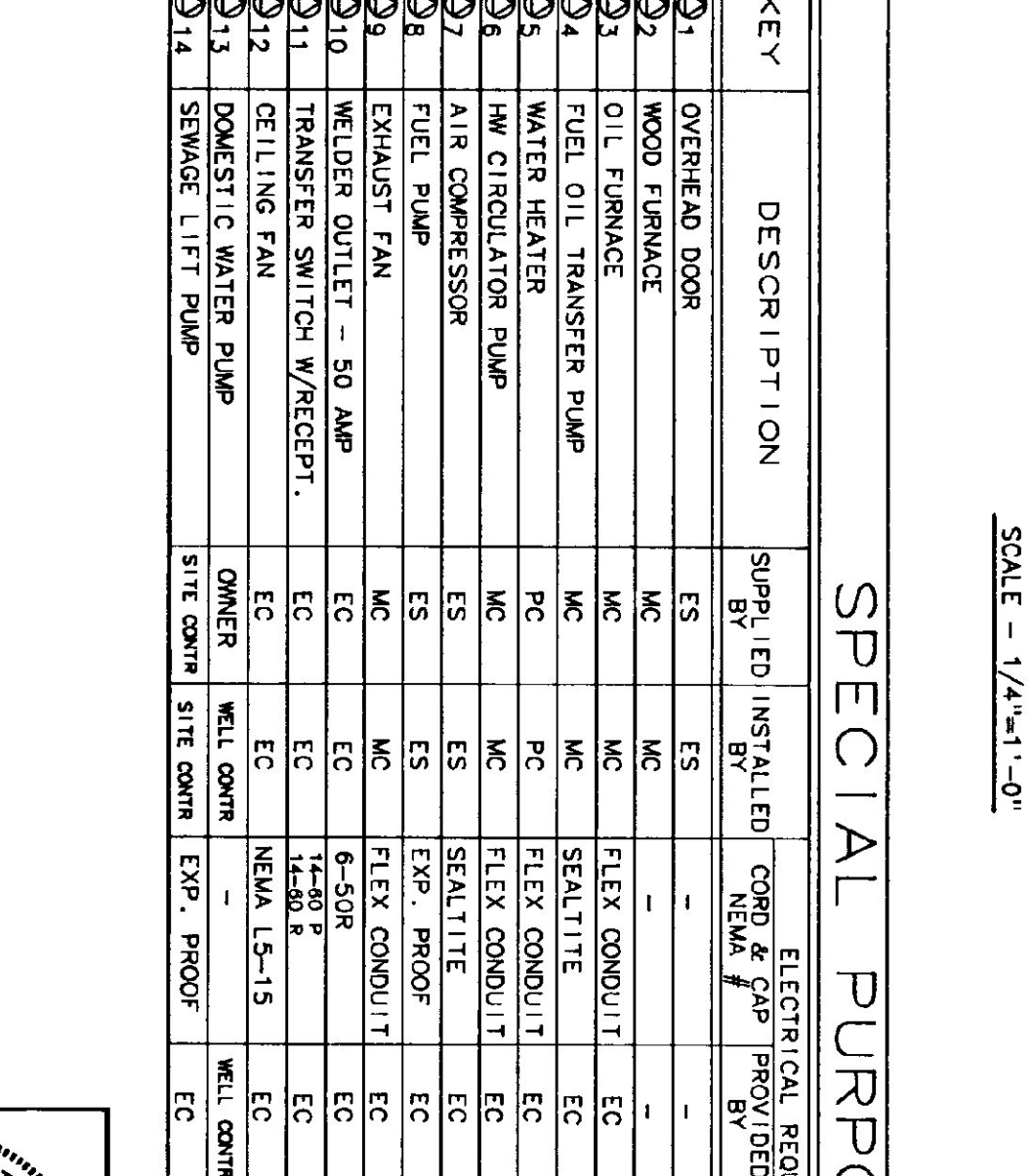
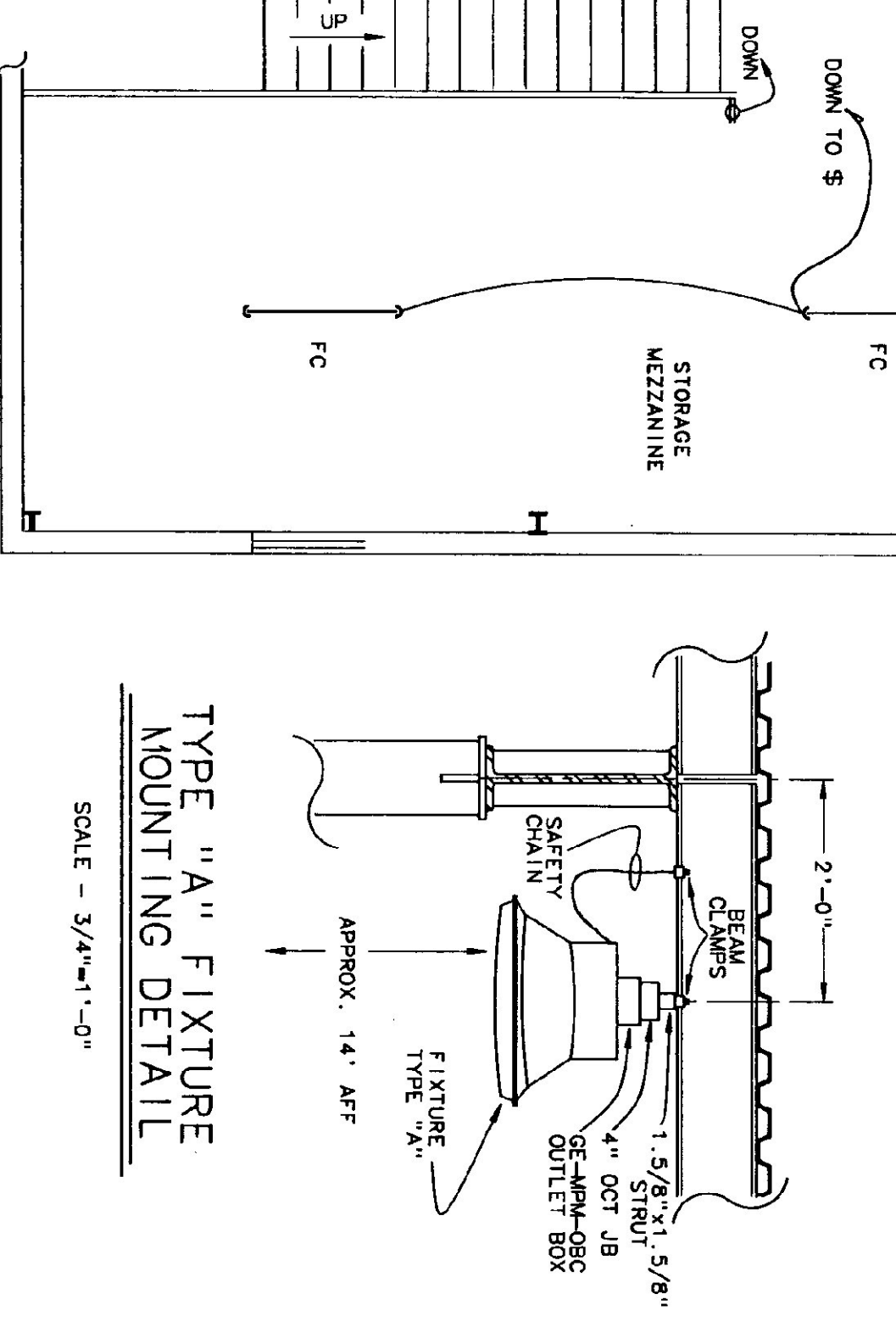


SPECIAL PURPOSE OUTLET SCHEDULE

KEY	DESCRIPTION	SUPPLIED BY	INSTALLED BY	CONDUCTOR & CAP	ELECTRICAL REQUIREMENTS	TYPE	STARTER PROVIDED BY	INSTALLED BY	ELECTRICAL DISCONNECT	REMARKS
1	OVERHEAD DOOR	ES	ES	120 10	10	M	ES	ES	ES	CONTROL WIRING BY EC
2	WOOD FURNACE	MC	MC	240 10	10	W/CONTROLLER	MC	EC	ES	30A-2P
3	OIL FURNACE	MC	MC	120 5	5	CONTROL	MC	EC	MC	CONTROL BY MC
4	FUEL OIL TRANSFER PUMP	MC	PC	120 10	10	MAG	MC	EC	EC	CONTROL BY MC
5	WATER HEATER	PC	PC	120 12.5	12.5	-	-	EC	EC	1/2" C, 2-#14 TO DISCHARGE
6	HW CIRCULATOR PUMP	MC	MC	120	10	MAG	MC	EC	ES	CONTROL BY MC
7	AIR COMPRESSOR	ES	ES	240 28	28	MAG	ES	EC	ES	CONTROL BY MC
8	FUEL PUMP	ES	ES	240 10	10	MAG	ES	EC	ES	CONTROL BY MC
9	EXHAUST FAN	ES	EXP	240 10	10	MAG	ES	EC	ES	CONTROL BY MC
10	WELDER OUTLET - 50 AMP	EC	EC	250 50	50	-	-	EC	EC	CONTROL BY MC
11	TRANSFER SWITCH W/RECEPT.	EC	EC	1-80 P	80	-	-	EC	EC	CONTROL BY MC
12	CELLING FAN	EC	EC	120	0.6	SPEED CONTROL	EC	EC	EC	CONTROL BY MC
13	DOMESTIC WATER PUMP	EC	EC	240	10	MAG	EC	EC	EC	CONTROL BY MC
14	SEWAGE LIFT PUMP	EC	EC	230	8	MAG	EC	EC	EC	CONTROL BY MC

KEYED NOTES

- REFER TO OIL BURNER ONE LINE DIAGRAM
- REFER TO OVERHEAD DOOR WIRING DIAGRAM
- REFER TO FUEL PUMP WIRING DIAGRAM
- LABEL ALL SWITCHES AS TO FUNCTION WITH BLACK PHENOLIC NAME PLATES, 1" HIGH WHITE LETTERS, FASTEN NAME PLATE TO SWITCH PLATE WITH BRASS SCREWS.



Pearson & Associates
MECHANICAL & ELECTRICAL ENGINEERS

P. O. BOX 610 STOWE, VERMONT, 05672
TEL. (802) 253-9607 FAX (802) 253-9290

STATE OF VERMONT
DEPARTMENT OF STATE BUILDINGS
AGENCY OF ADMINISTRATION

MONTPELIER VERMONT

FIRST FLOOR POWER PLAN
VERMONT AGENCY OF TRANSPORTATION
6 BAY MAINTENANCE GARAGE

CLARENDON VERMONT
DATE: 0/09/93 SCALE: 1/4"=1'-0" CAD FILE: PS-C-12 DWG NO. E-2
DRAWN BY: B.W.M. APPROVED BY: [Signature] REVISIONS:

20 OF 23