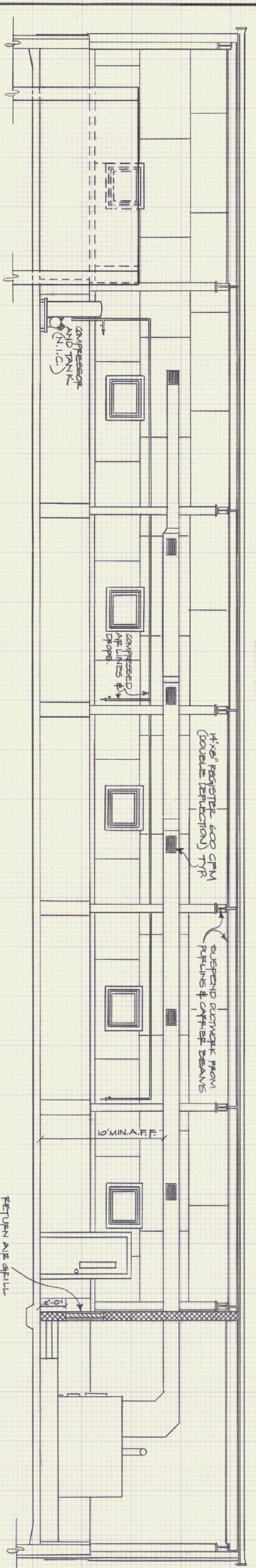


- NOTES:
1. FURNACE DRIVER MOTOR 1.5 HP 115/230V.
 2. STORAGE TANK FOR HOT WATER FROM FURNACE SHALL HAVE PRONGE CIRCULATING PUMP W/ONE LOOP FROM TANK TO FURNACE.
 3. ALL JOINTS IN FUEL OIL LINE TO BE PLASSED. ALL SOLDERED JOINTS TO BE SWEATED WITH SILVER SOLDER.

MECHANICAL PLAN
SCALE: 1/4" = 1'-0"



FURNACE & DUCTWORK ELEVATION
SCALE: 1/4" = 1'-0"

STATE OF VERMONT		DEPARTMENT OF STATE BUILDINGS	
MONTPELIER, VERMONT		AGENCY OF ADMINISTRATION	
HEATING PLAN			
VERMONT AGENCY OF TRANSPORTATION 6 BAY MAINTENANCE GARAGE CLARENDON, VERMONT			
DATE:	APRIL 19, 1993	SCALE:	1/4" = 1'-0"
DRAWN BY:	A. POULIN	APPROVED BY:	[Signature]
REVISIONS:		DWG. NO.	H-1
			15 OF 23