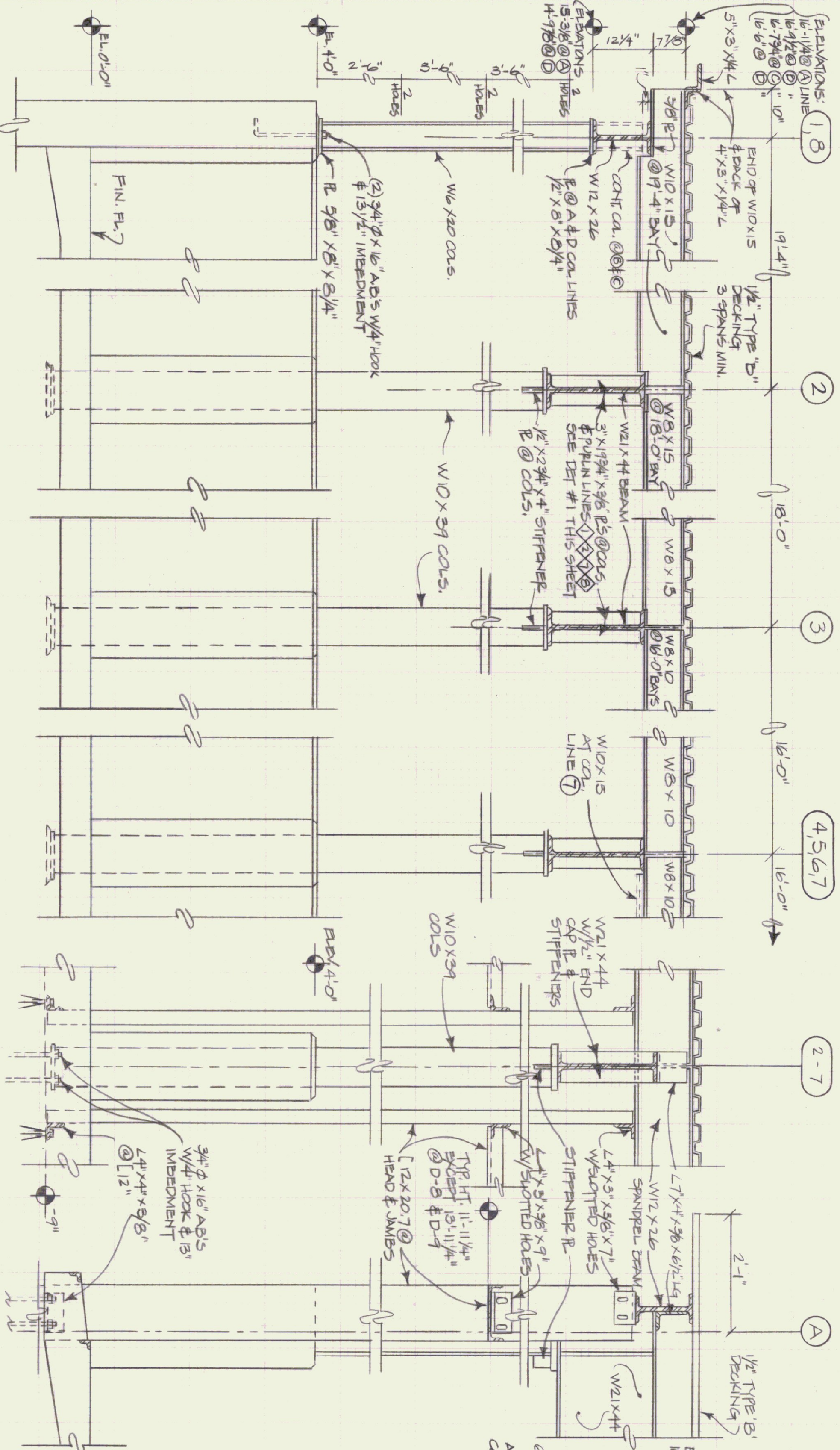
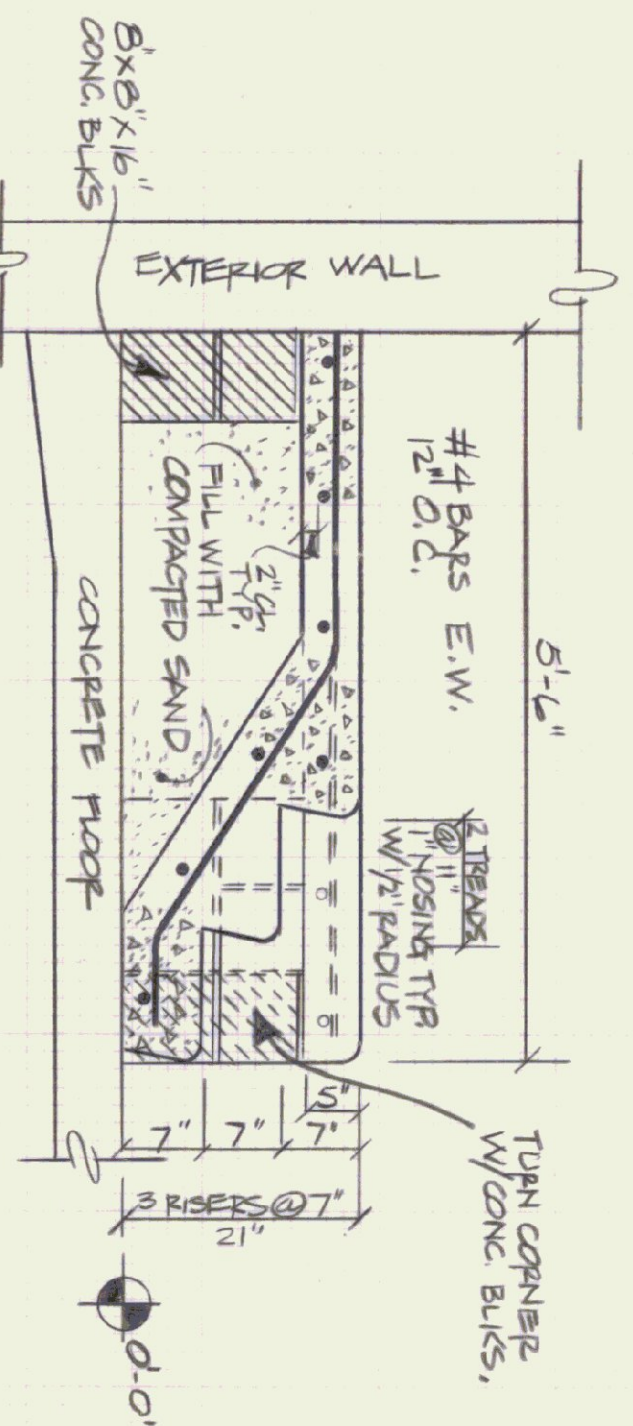


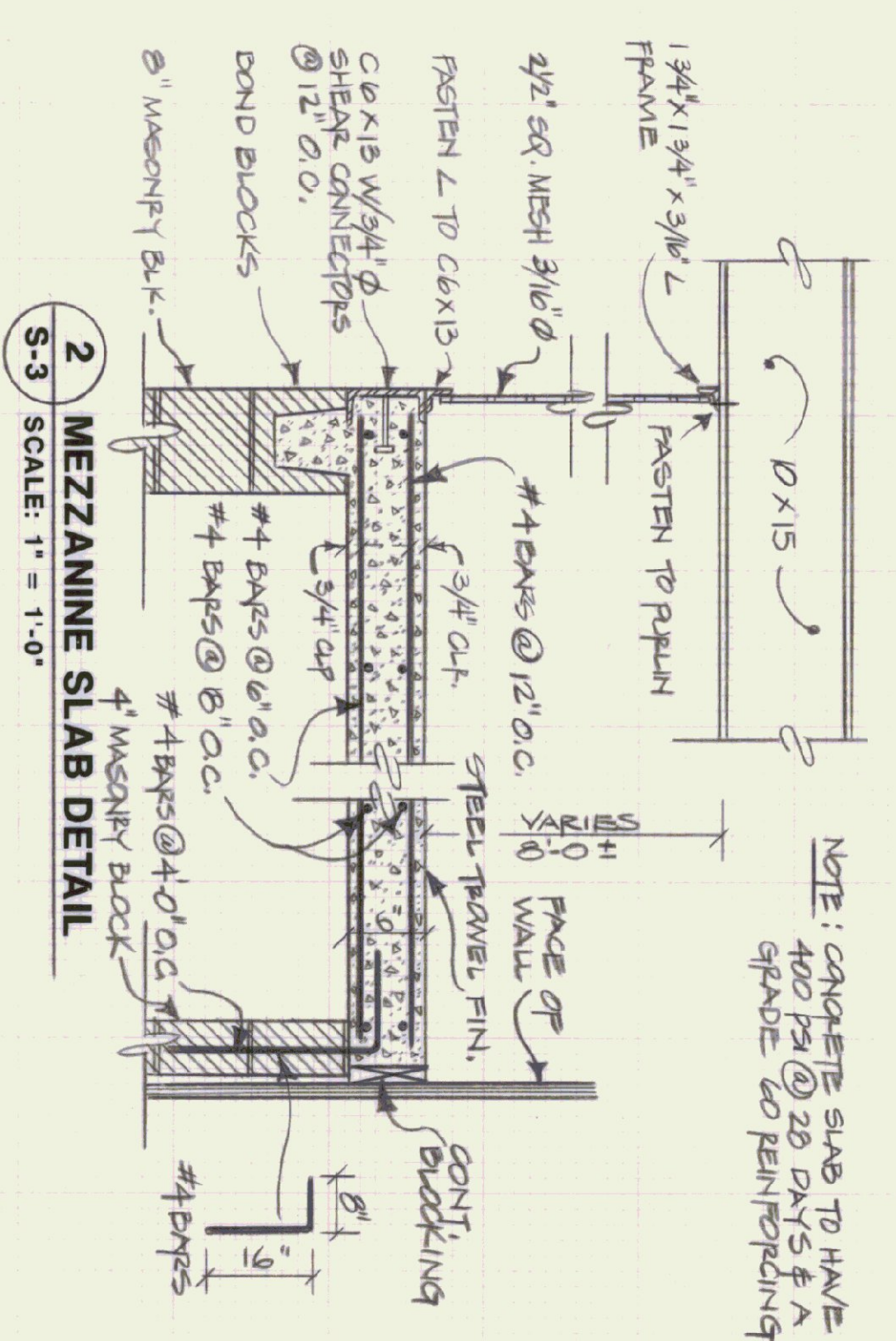
ROOF FRAMING PLAN
SCALE: 1/8" = 1'-0"



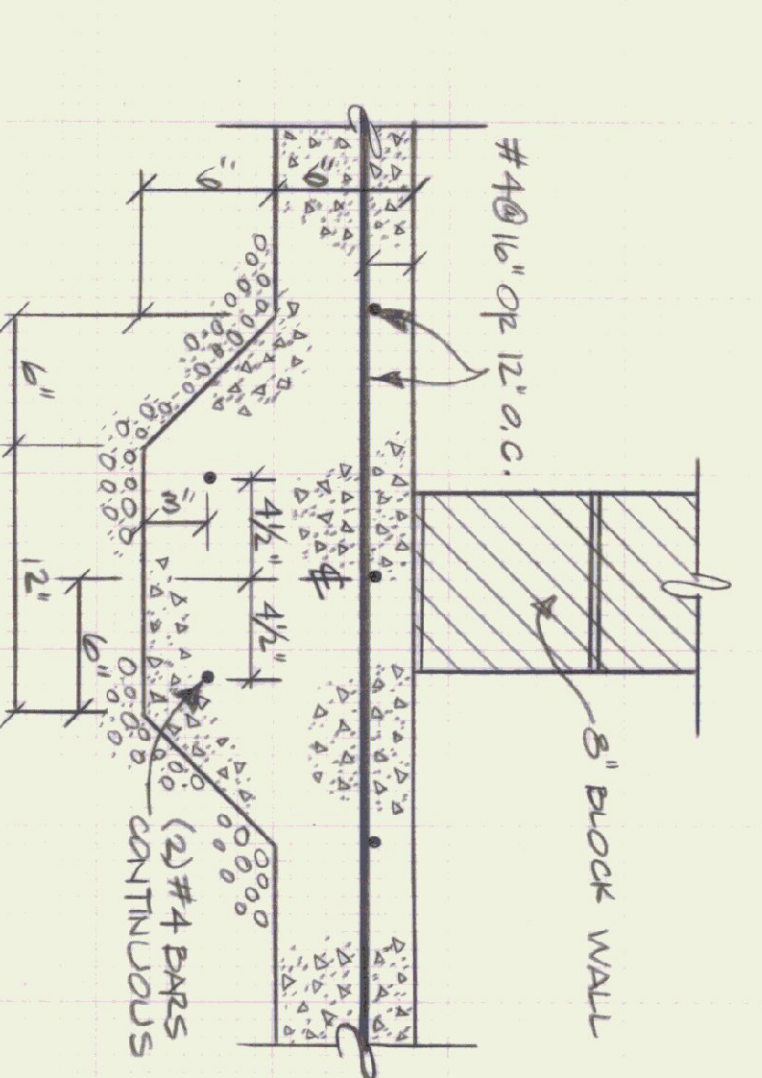
4 SECTION SCALE: 3/4" = 1'-0"
5 SECTION SCALE: 3/4" = 1'-0"
6 SECTION SCALE: 3/4" = 1'-0"
7 SECTION SCALE: 3/4" = 1'-0"
8 SECTION SCALE: 3/4" = 1'-0"
9 SECTION SCALE: 3/4" = 1'-0"



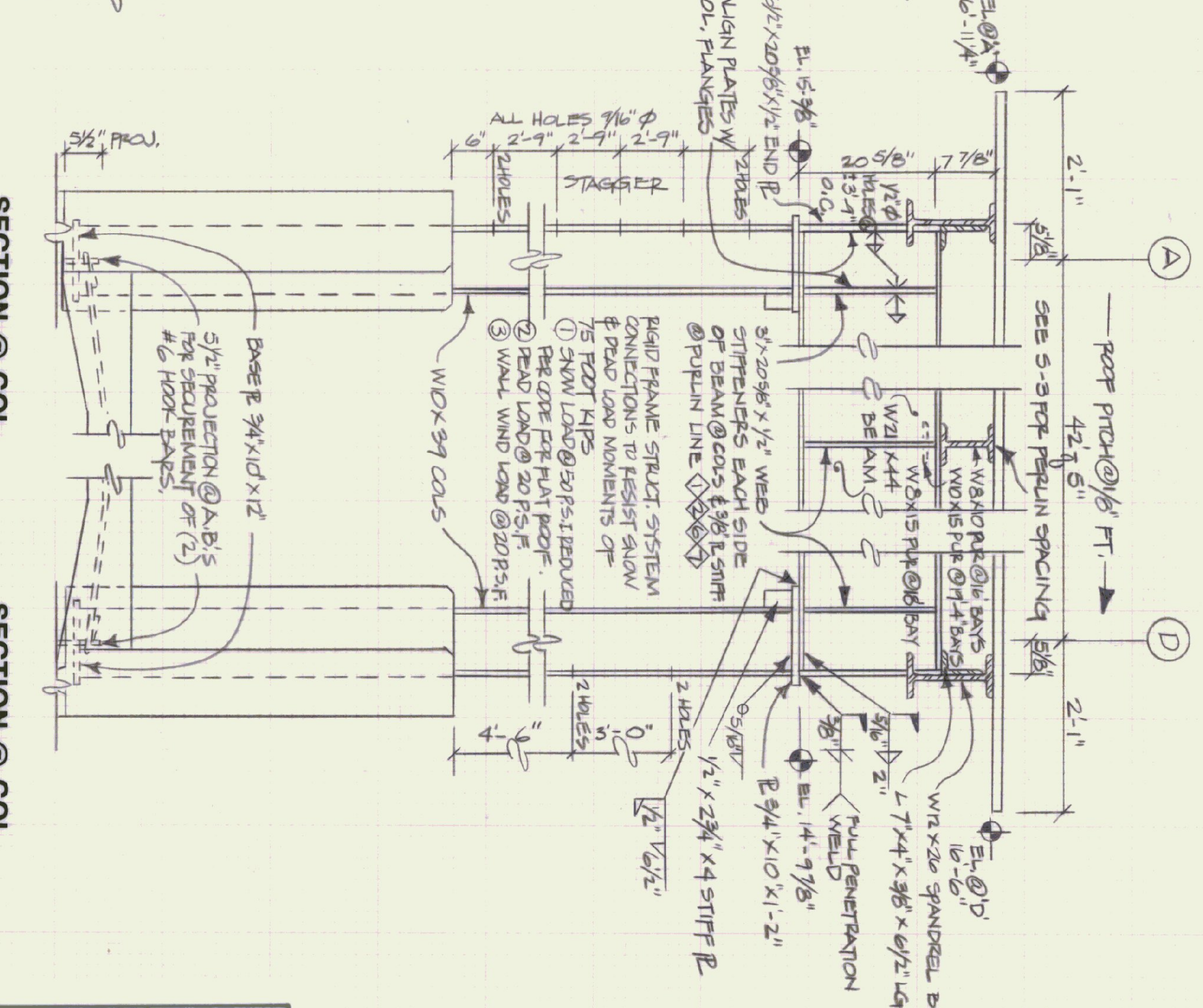
1 MECH. ROOM STAIR SECTION
SCALE: 3/4" = 1'-0"



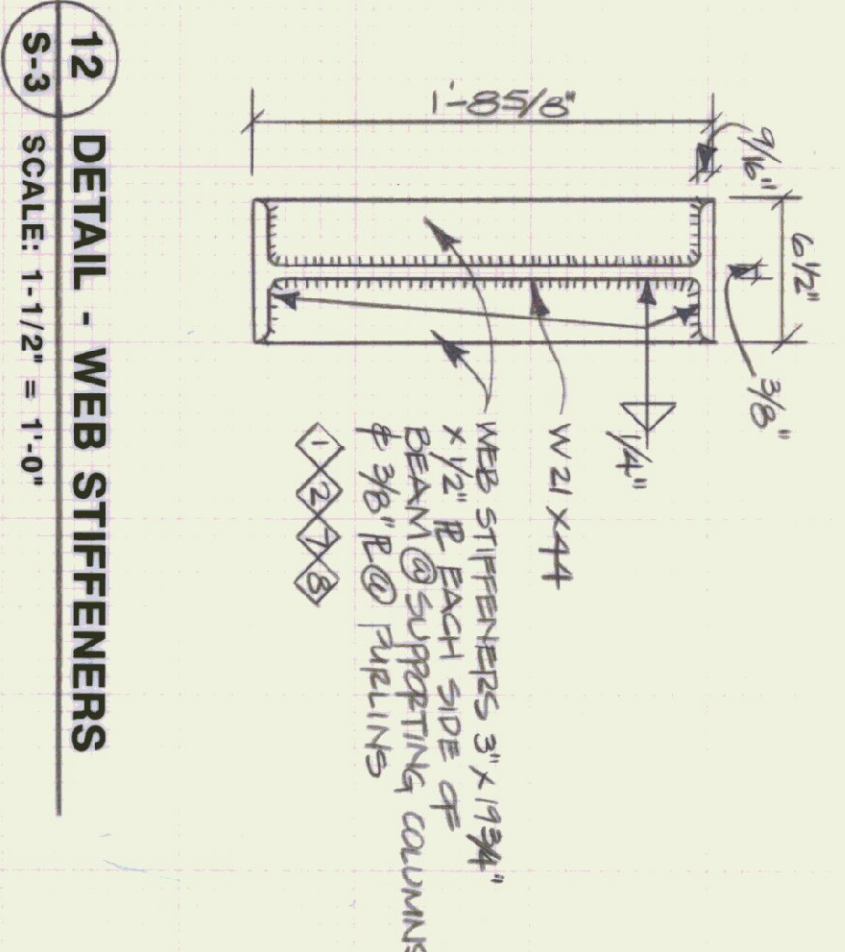
2 MEZZANINE SLAB DETAIL
SCALE: 1" = 1'-0"



3 SLAB FOOTING AT BLOCK WALL DETAIL
SCALE: 1-1/2" = 1'-0"



10 SECTION @ COL. LINE 'A'-2 SCALE: 3/4" = 1'-0"
11 SECTION @ COL. LINE 'D'-2 SCALE: 3/4" = 1'-0"



12 DETAIL - WEB STIFFENERS
SCALE: 1-1/2" = 1'-0"

LOADING NOTES:
(1) SNOW LOAD = 20#/SF REDUCED/COOL FOR FLAT ROOF
(2) DEAD LOAD = 20#/SF FOR ROOF
(3) WIND LOAD = 20#/SF @ WALLS
(4) MEZZANINE = 100#/SF FLOOR

BASE PLATE NOTES:
@ COL. LINES #1 & 8 BOT. OF BASE PL. @ +4'-0 3/4"
@ COL. LINES #2, 3, 4, 5, 6, 7 " " " @ -8 1/4"
MISC. NOTES:
CHANNELS FOR GARAGE DOORS (6 DOORS TOTAL) ARE NOT SHOWN ON FRAMING PLAN.
SEE A-5, A-6 & S-5

STATE OF VERMONT
DEPARTMENT OF STATE BUILDINGS
AGENCY OF ADMINISTRATION
MONTPELIER, VERMONT

STRUCTURAL STEEL FRAMING @ ROOF & STEEL SECTIONS & CONCRETE DETAILS
VERMONT AGENCY OF TRANSPORTATION
6 BAY MAINTENANCE GARAGE
CLARENDON, VERMONT

DATE: APRIL 19, 1993
DRAWN BY: A. POULIN
SCALE: AS NOTED
APPROVED BY: H. FRANK

REVISIONS:
DWG. NO. S-3
14 OF 23