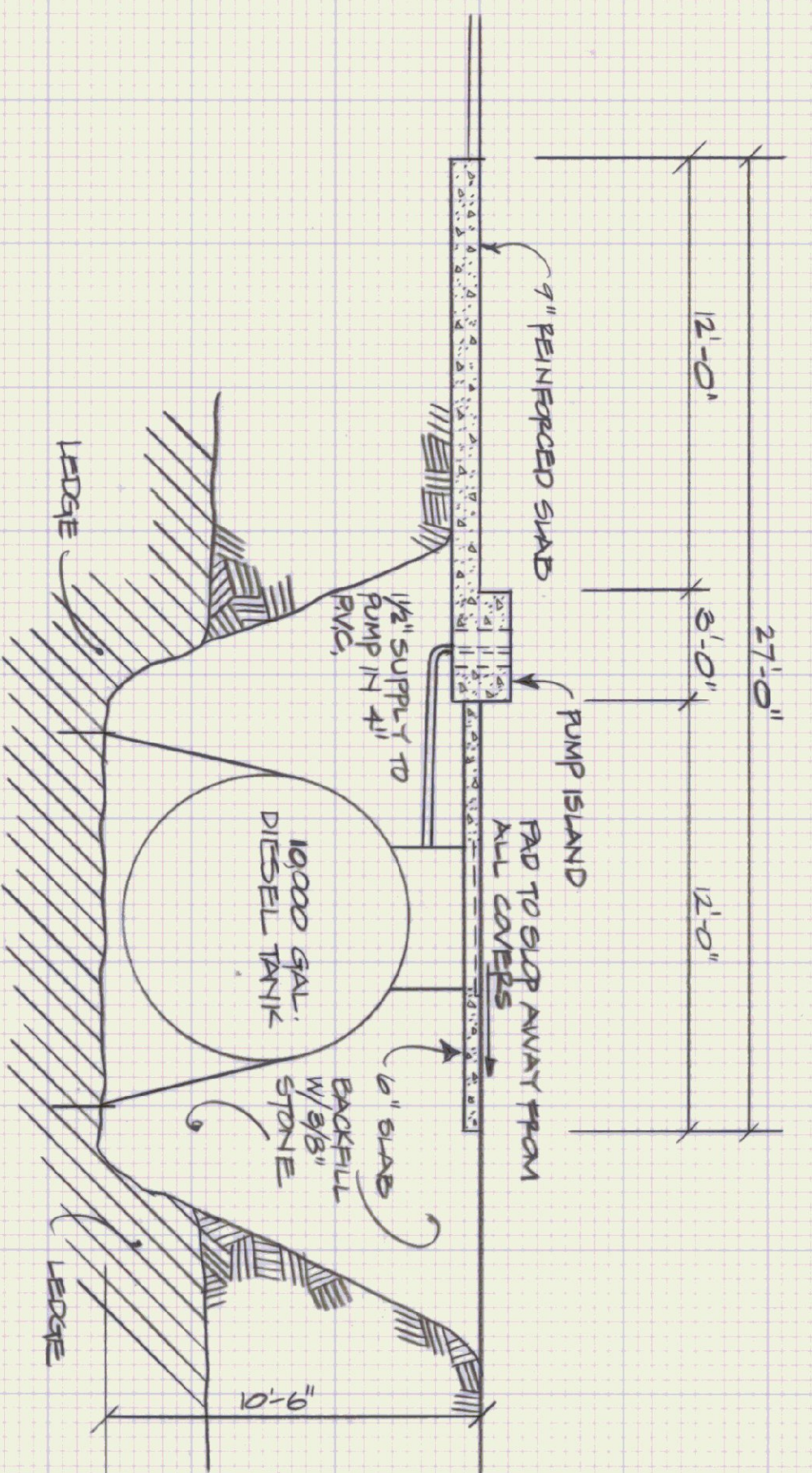
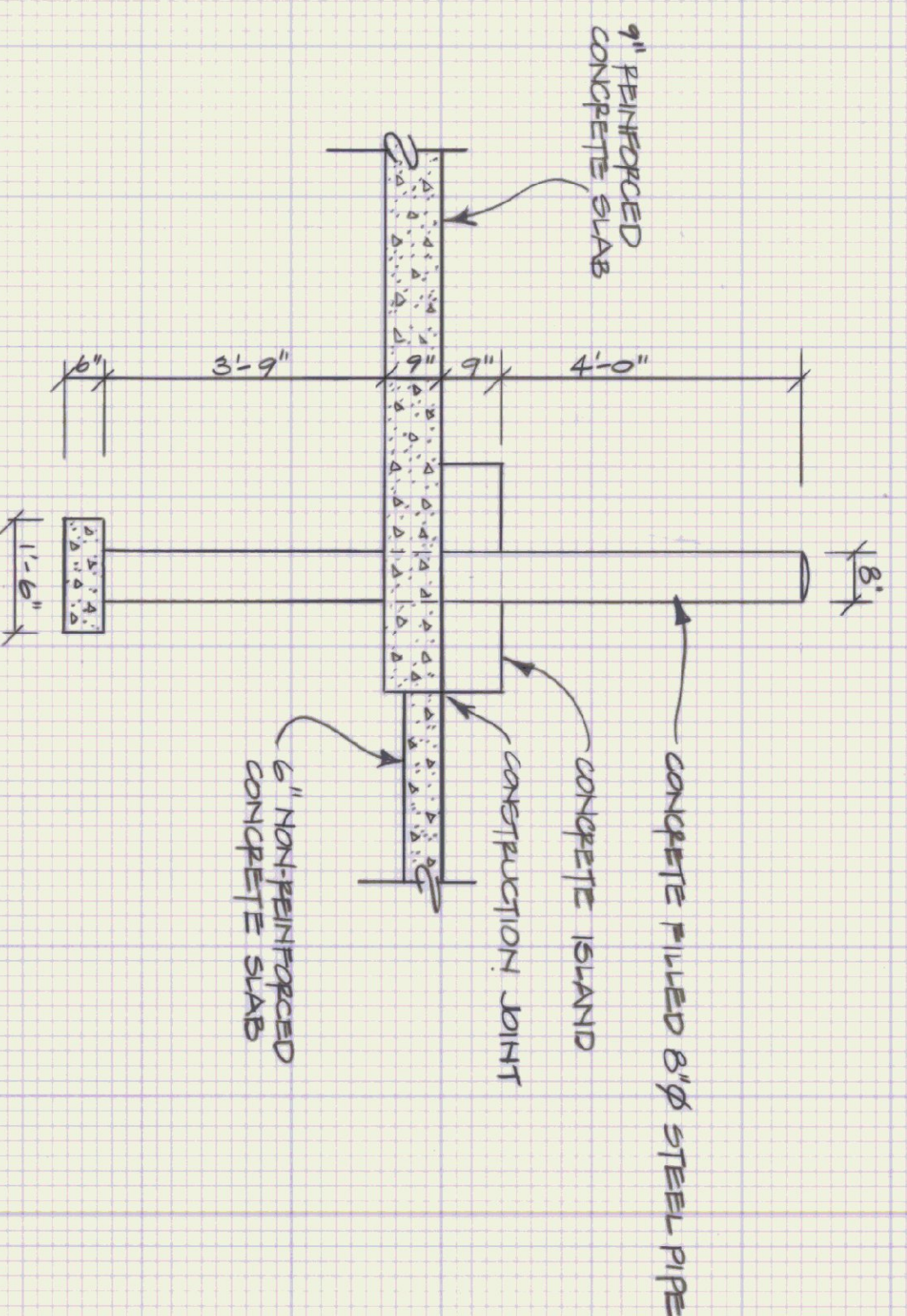


SLAB PLAN
SCALE: 1/4" = 1'-0"



END ELEVATION
SCALE: 1/4" = 1'-0"



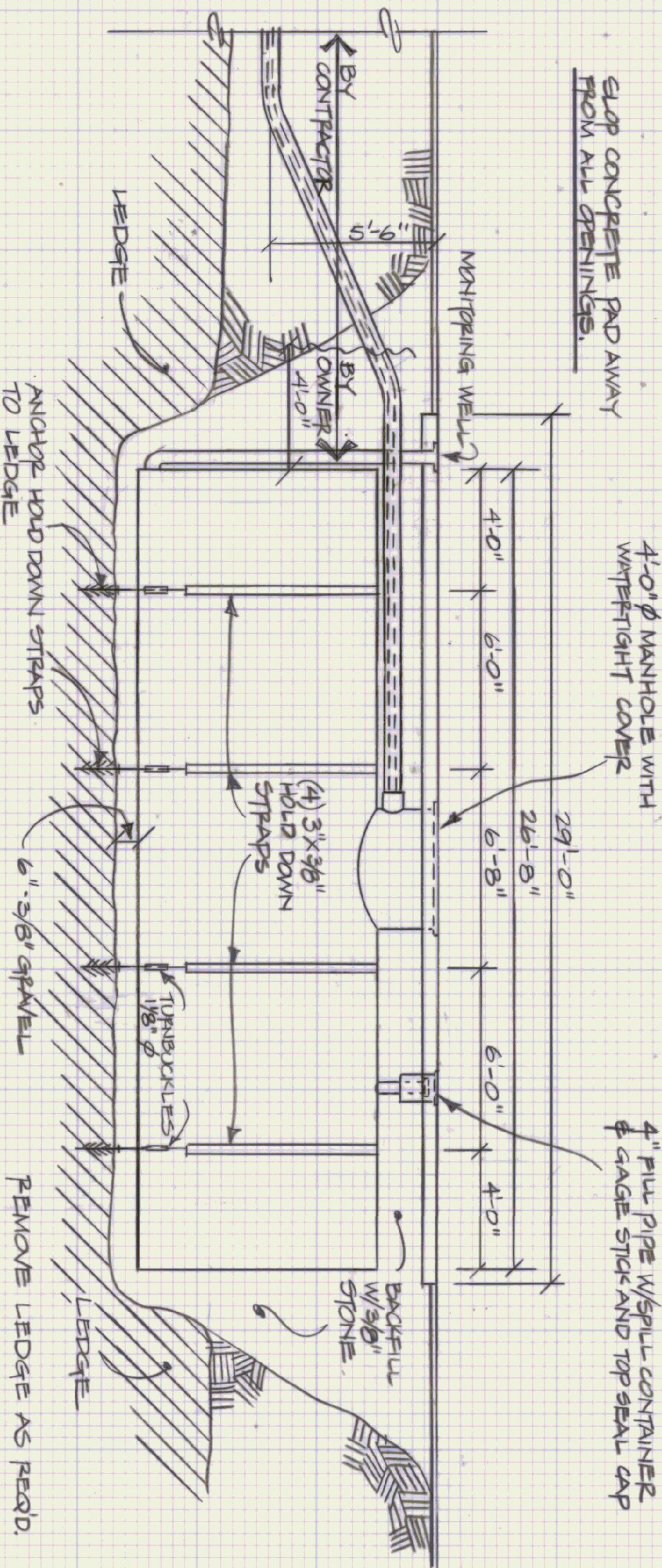
BOLLARD DETAIL
SCALE: 1/2" = 1'-0"

SLAB NOTES:

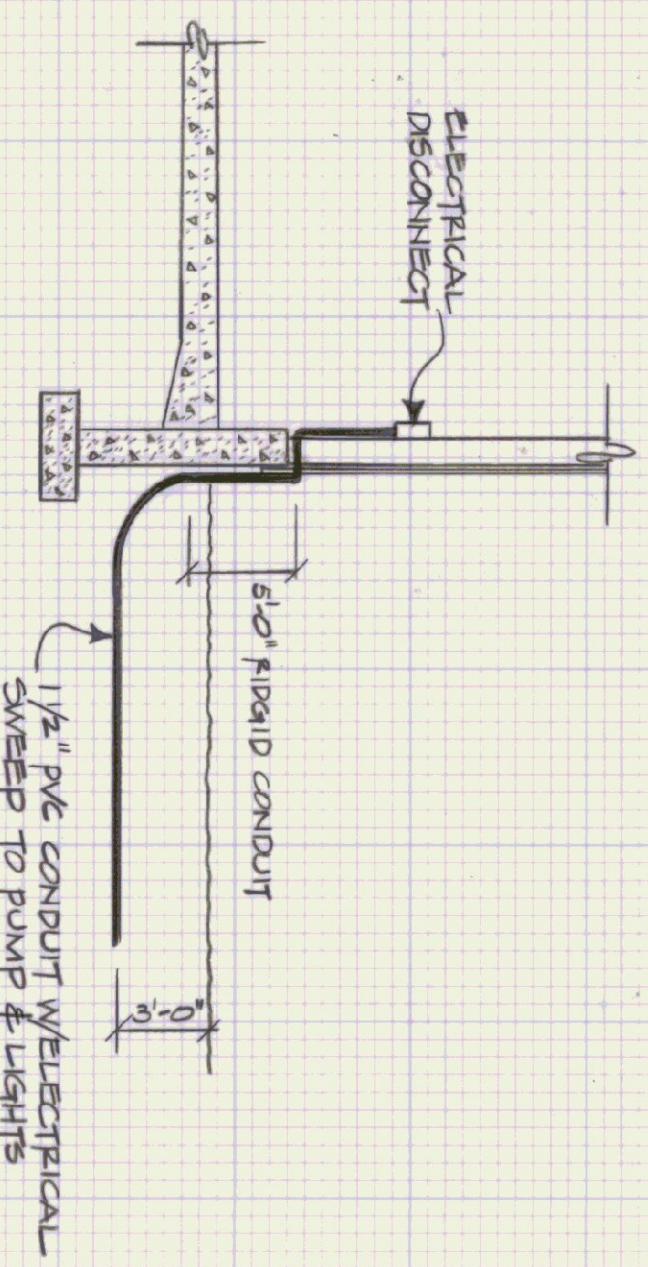
1. ALL CONCRETE SHALL BE NORMAL WEIGHT HAVING A MINIMUM STRENGTH OF 3500 PSI. AT 28 DAYS. CLASS B CONCRETE PER STATE OF VERMONT, AGENCY OF TRANSPORTATION STANDARD SPECIFICATION FOR CONSTRUCTION.
2. REINFORCING STEEL SHALL COMPLY WITH ASTM A615 GRADE 60.
3. ANCHOR BOLTS TO BE GRADE A 307.
4. SLOPE CONCRETE AWAY FROM ALL MANHOLES AND FILL PORTS.

PUMP AND TANK NOTES:

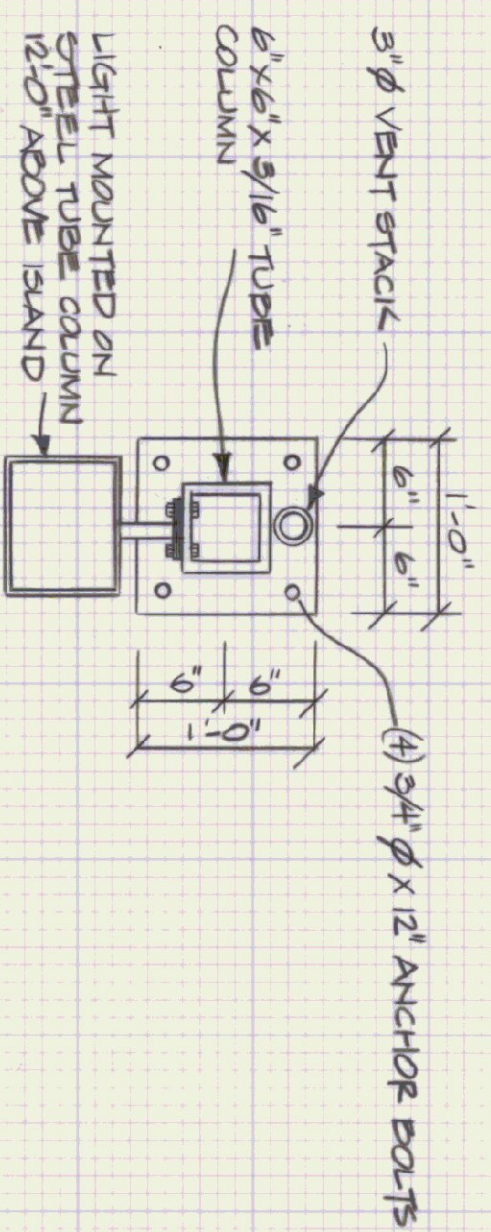
1. PROVIDE 1 GAS DOY SERIES 5053A REMOTE DISPENSERS AND CONNECT TO 10000 GAL. DIESEL TANK.
2. DIESEL TANK TO BE UNDERGROUND 571-P3 SYSTEM DOUBLE WALL TANK 1/4" INTERWALL, 10 GA OUTERWALL.
3. CONTAINMENT MANHOLE AND FILL PIPE TO HAVE WATER TIGHT SEAL.
4. PUMP TO HAVE DIESEL FILTER, 1/2" CHECK VALVE, STANDARD 25'-0" HOSE, MANUAL NOZZLE AND METER IN U.S. GALLONS WITH HOSE FEETWEAR.
5. ALL INSTALLATIONS ARE TO CONFORM TO STATE OF VERMONT, UNDERGROUND STORAGE TANK REGULATIONS, MARCH 1, 1987.



SIDE ELEVATION
SCALE: 1/4" = 1'-0"



ELECTRICAL TO LIGHT AND PUMP
NOT TO SCALE



VENT/COLUMN DETAIL
SCALE: 1" = 1'-0"

STATE OF VERMONT
DEPARTMENT OF STATE BUILDINGS
AGENCY OF ADMINISTRATION
MONTPELIER, VERMONT

FUEL TANK
VERMONT AGENCY OF TRANSPORTATION
6 BAY MAINTENANCE GARAGE
CLARENDON, VERMONT

DATE	SCALE	REVISIONS	DWG. NO.
APRIL 19, 1993	AS NOTED		FT-1
DRAWN BY A. POULIN	APPROVED BY F. RAYT		4 OF 23