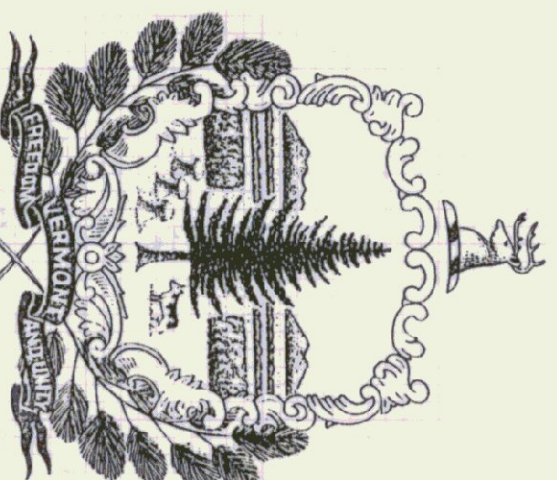


STATE OF VERMONT  
AGENCY OF TRANSPORTATION  
**SALT AND SAND SHEDS**  
CASTLETON, VERMONT

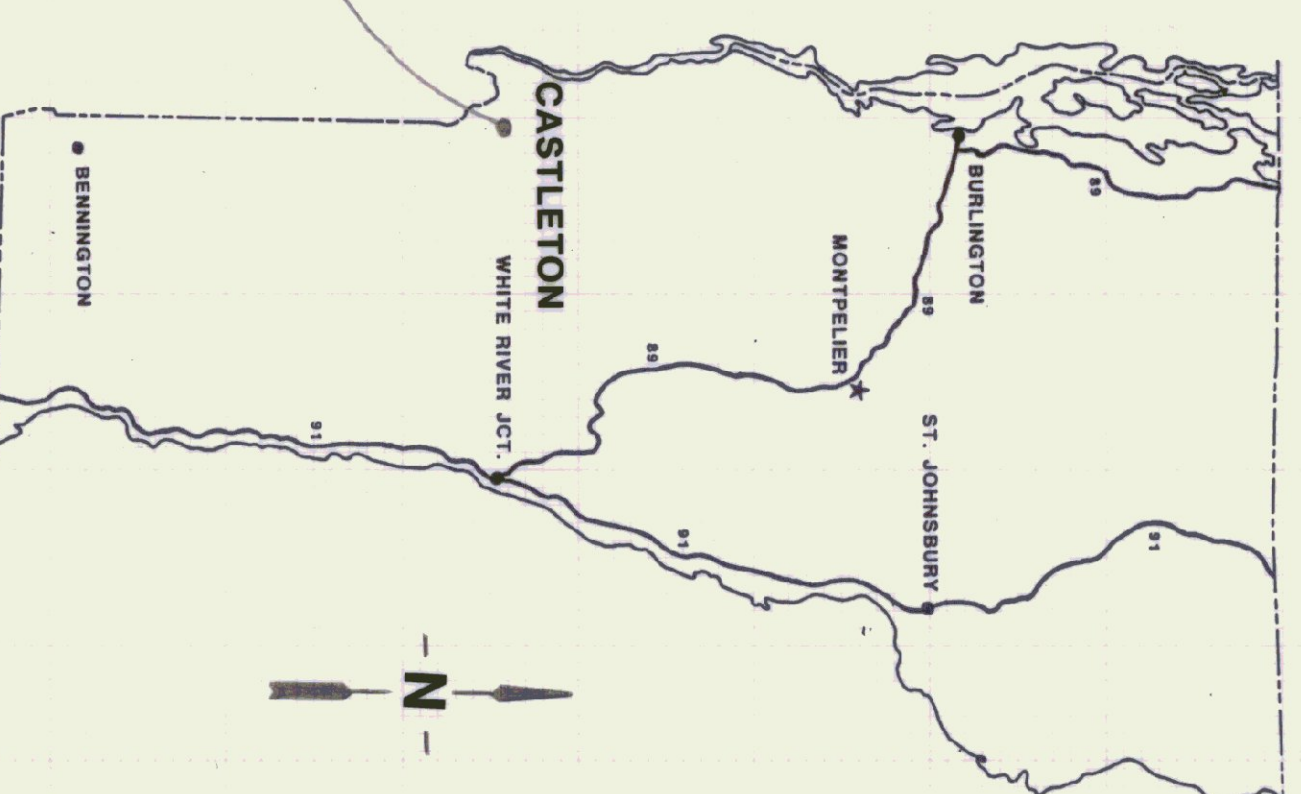
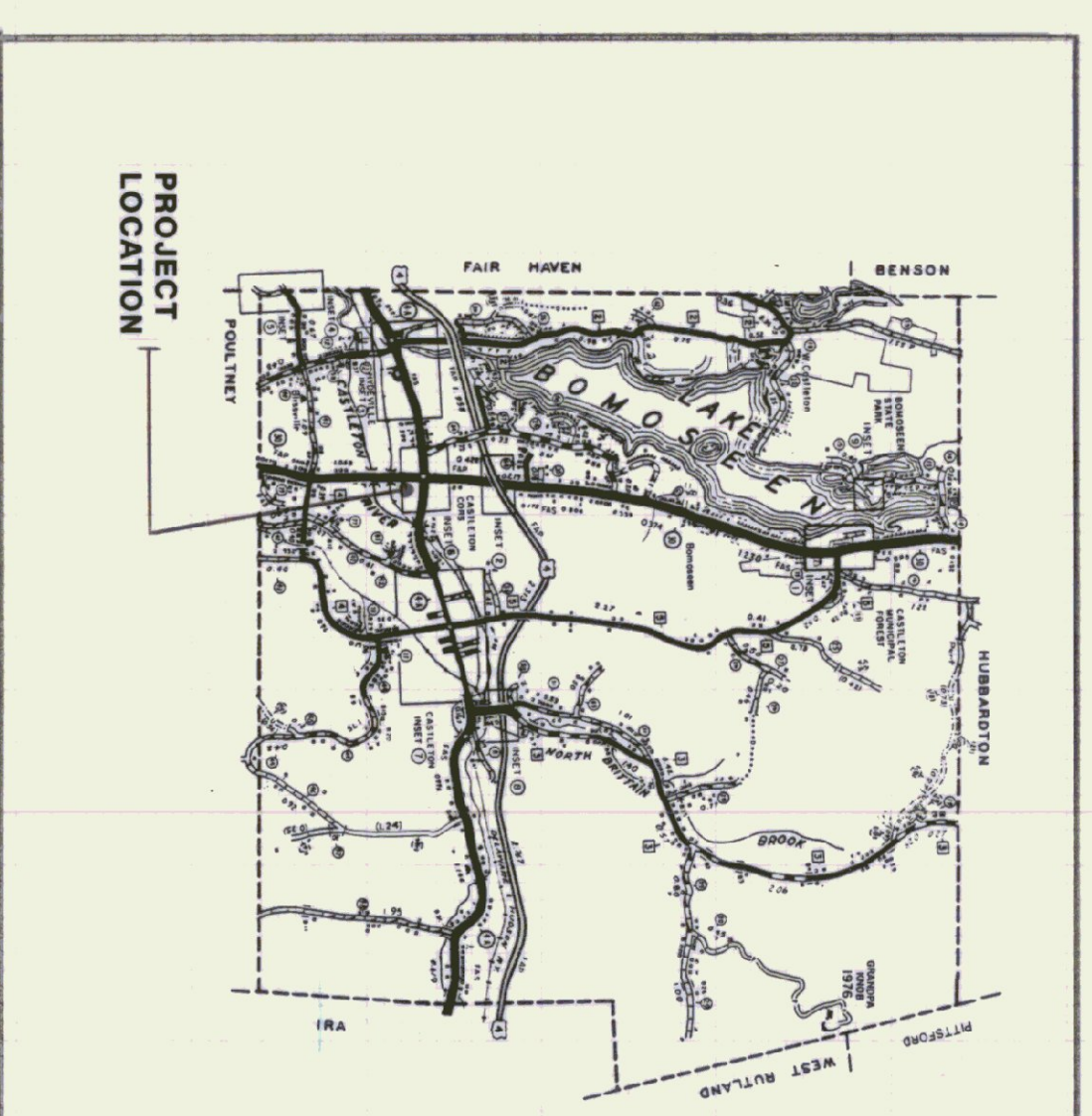
JULY 9, 1993

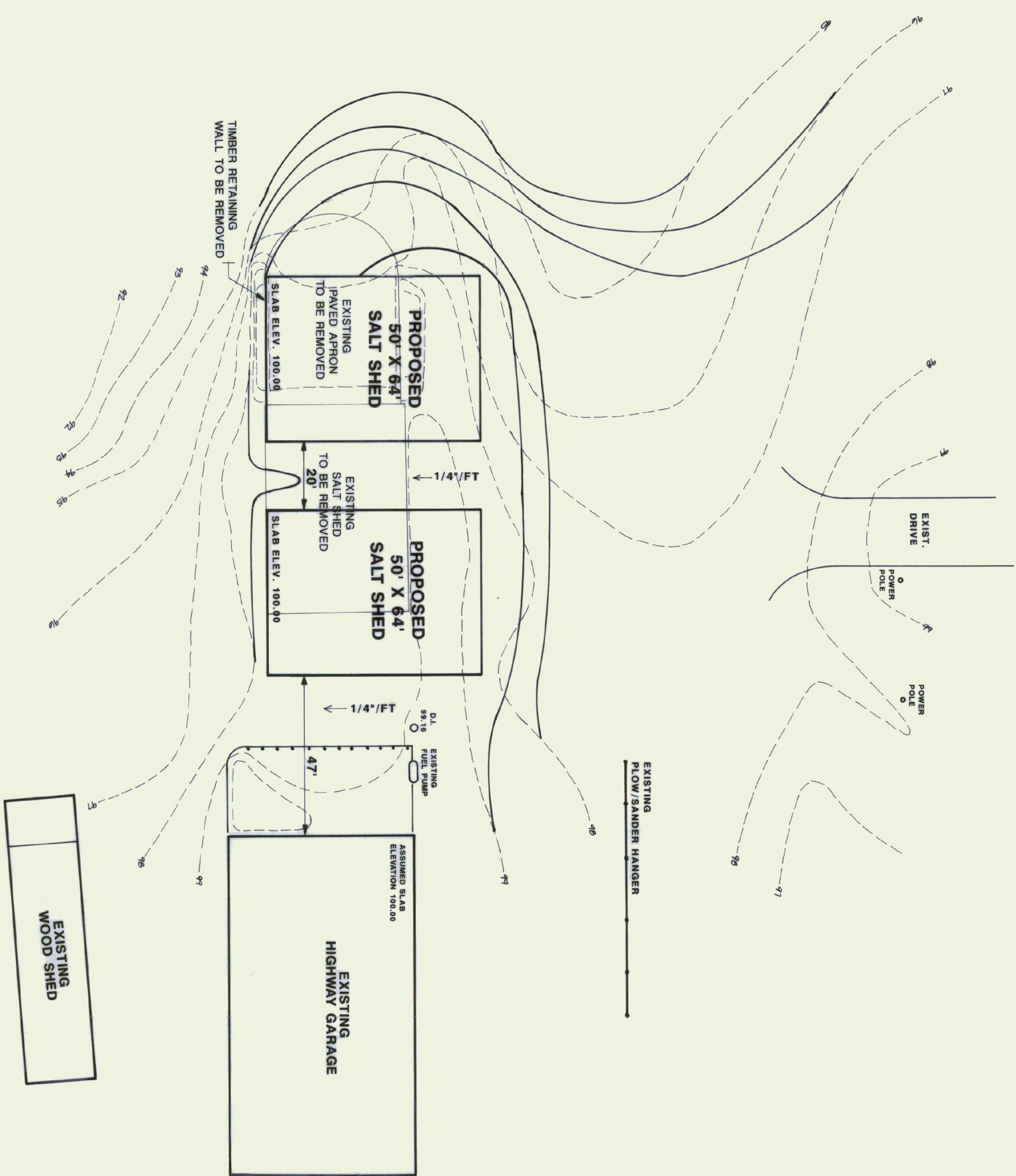
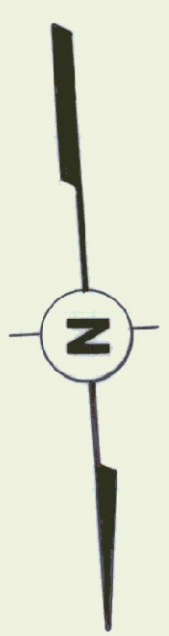
AGENCY OF ADMINISTRATION  
DEPARTMENT OF STATE BUILDINGS  
2 GOVERNOR AIKEN AVENUE  
MONTPELIER, VERMONT 05602  
JOHN J. ZAMPIERI, COMMISSIONER



GOVERNOR HOWARD DEAN

AGENCY OF TRANSPORTATION  
133 STATE STREET  
MONTPELIER, VERMONT 05602  
PATRICK J. GARAHAN, SECRETARY

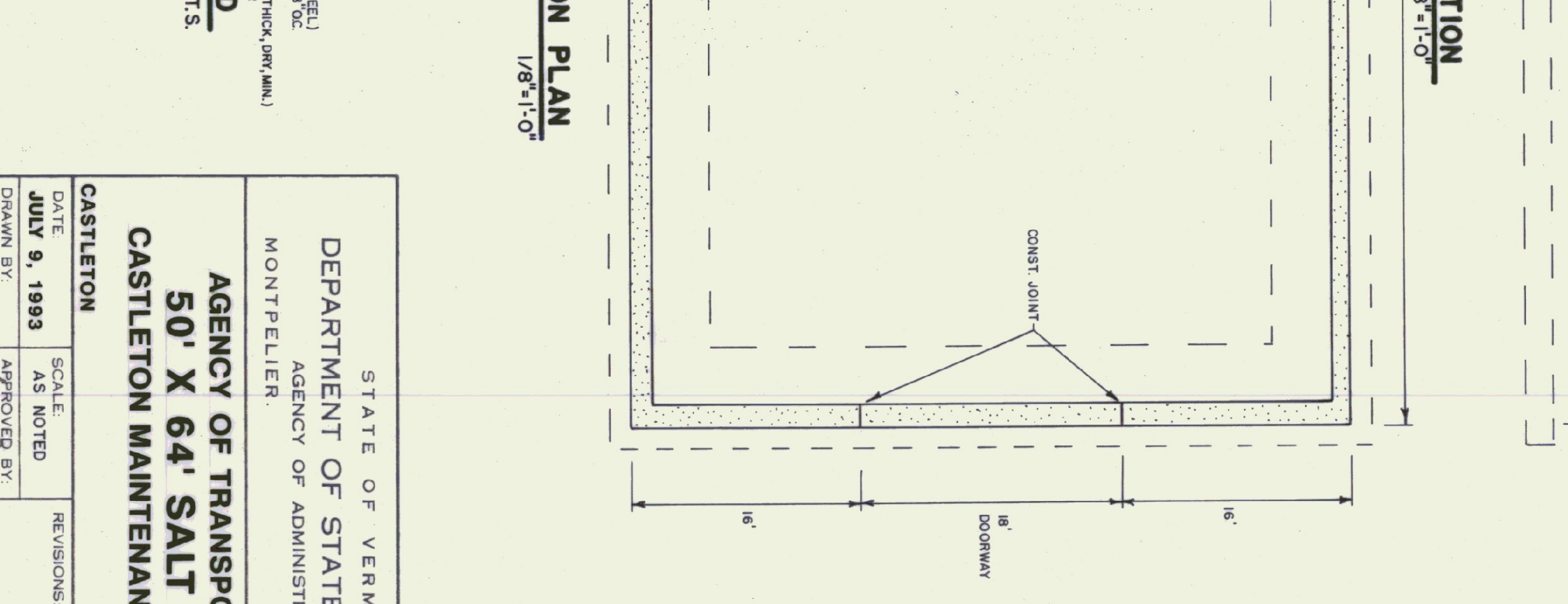
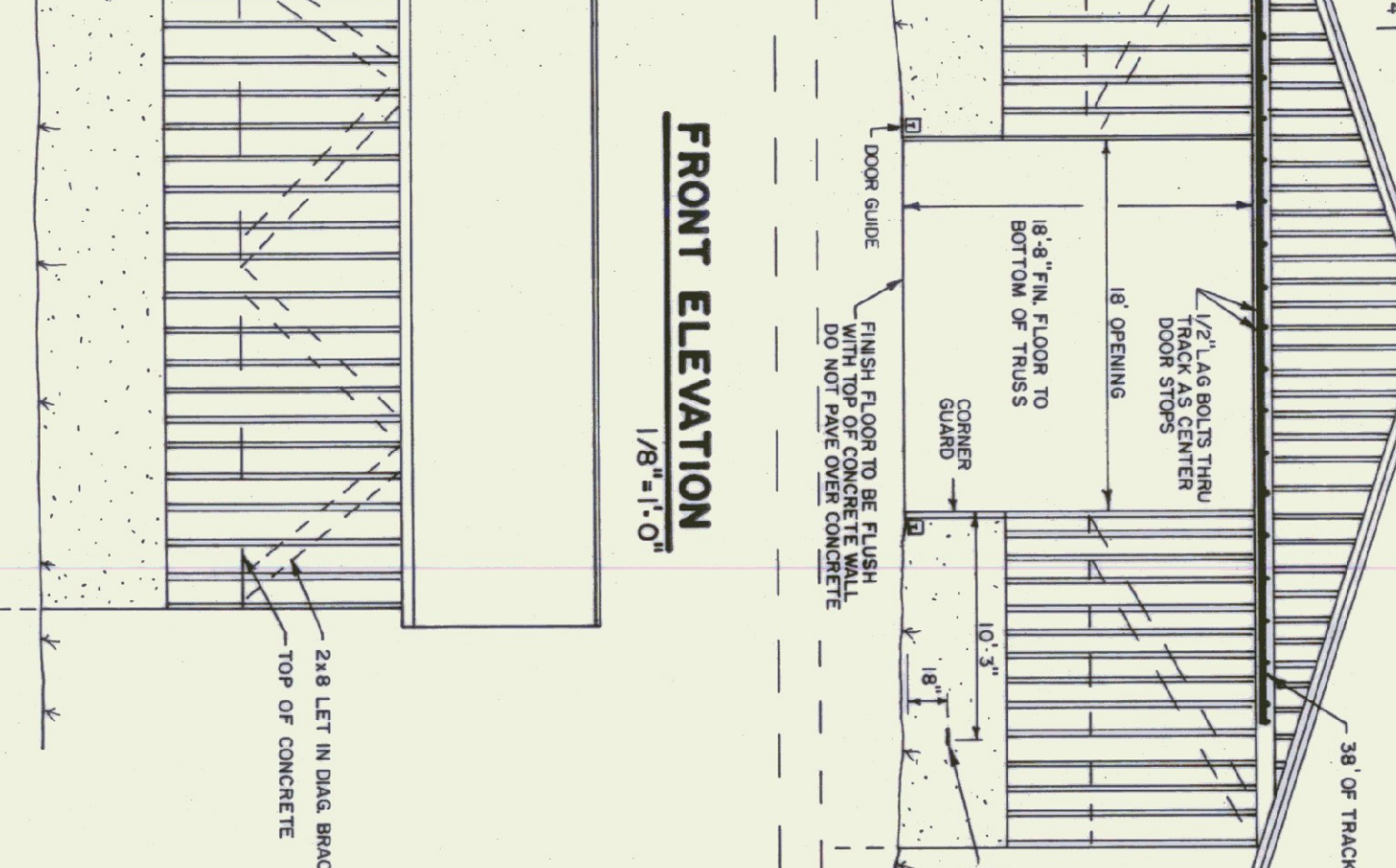
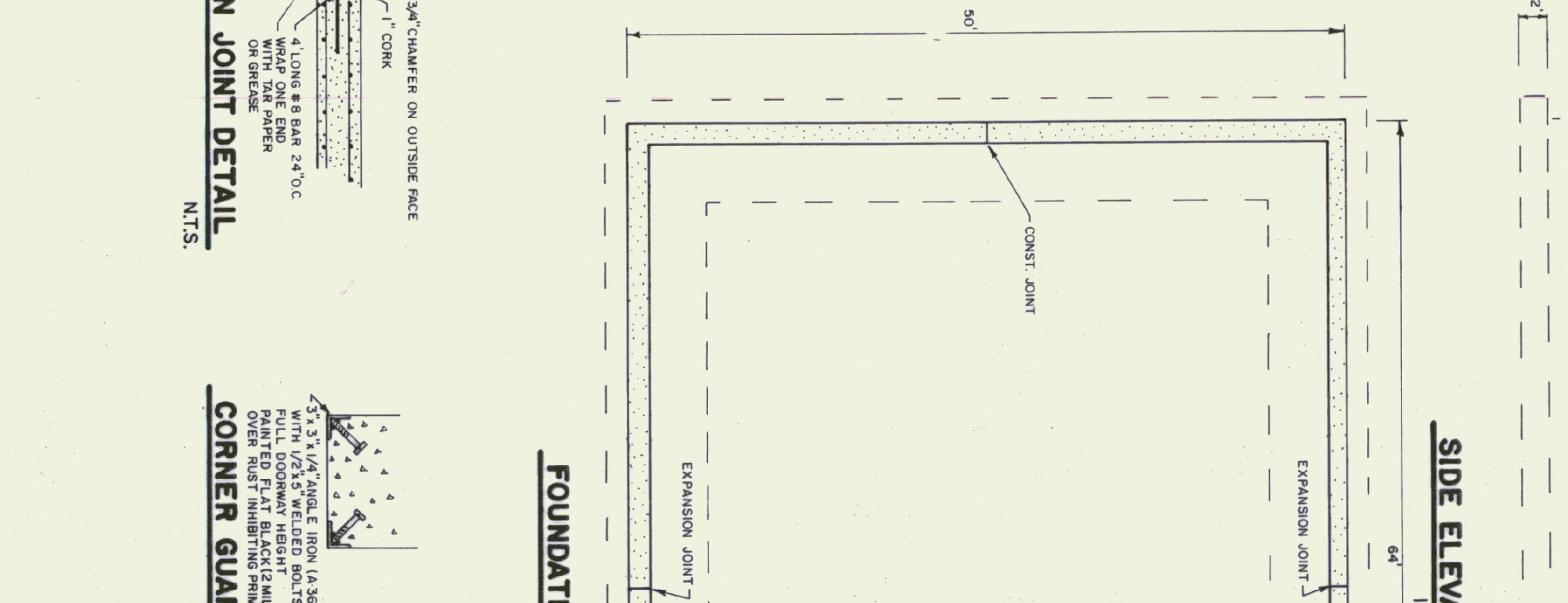
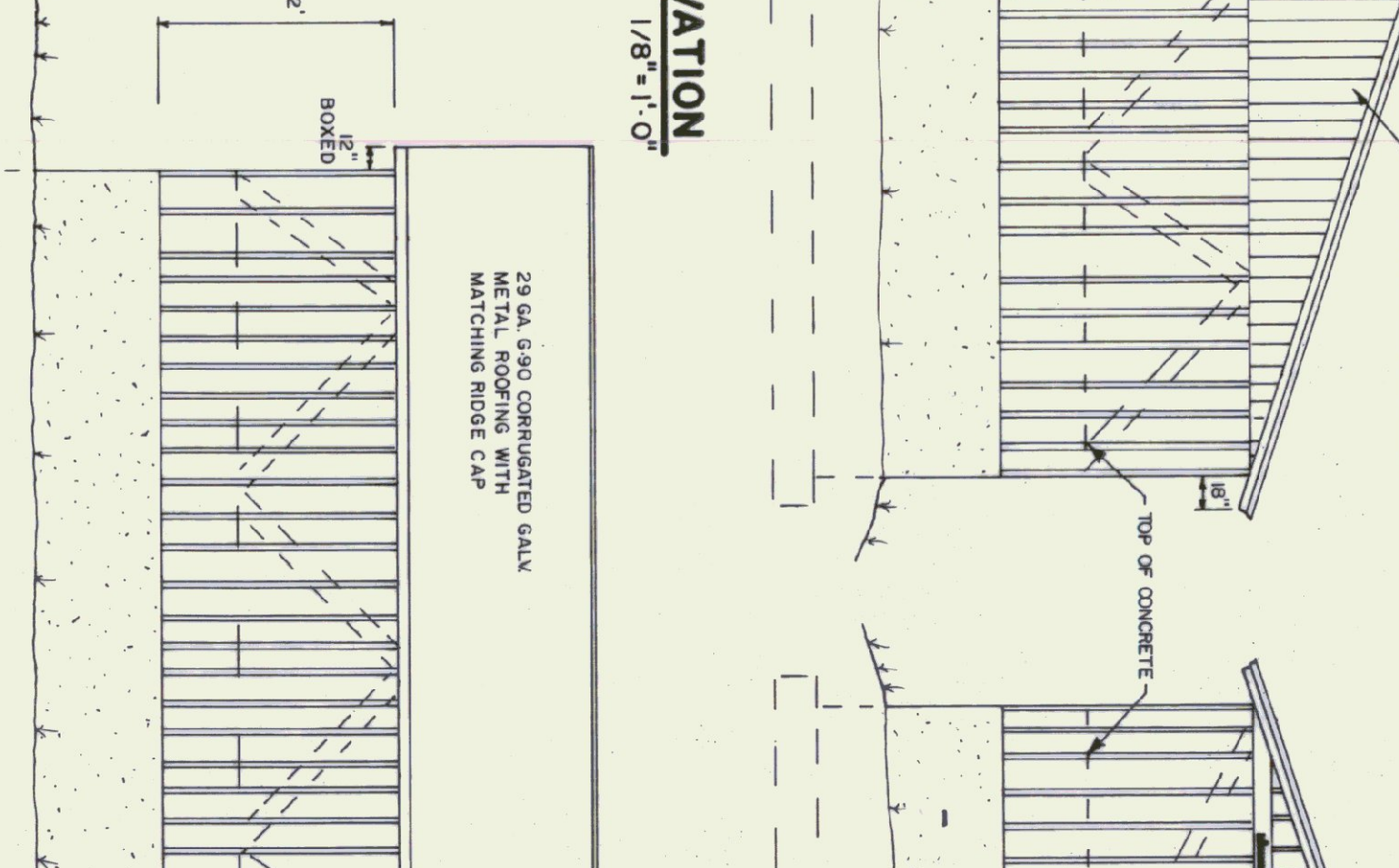
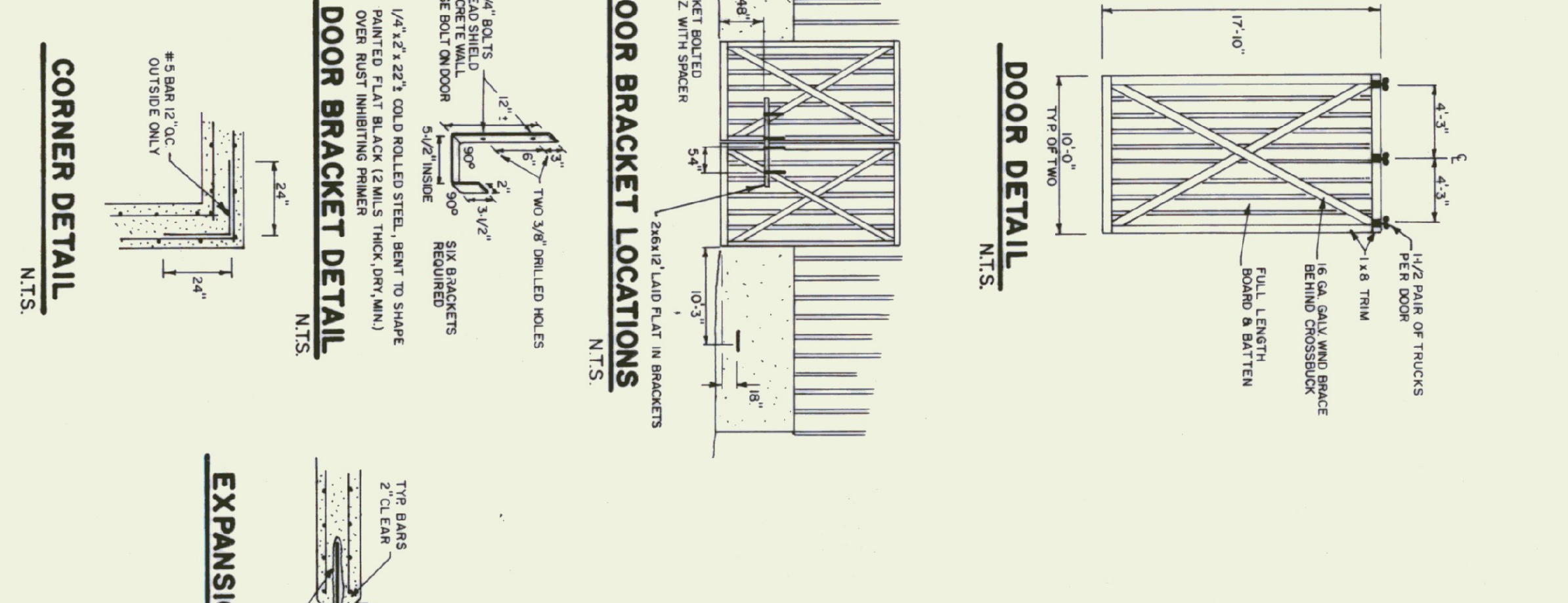
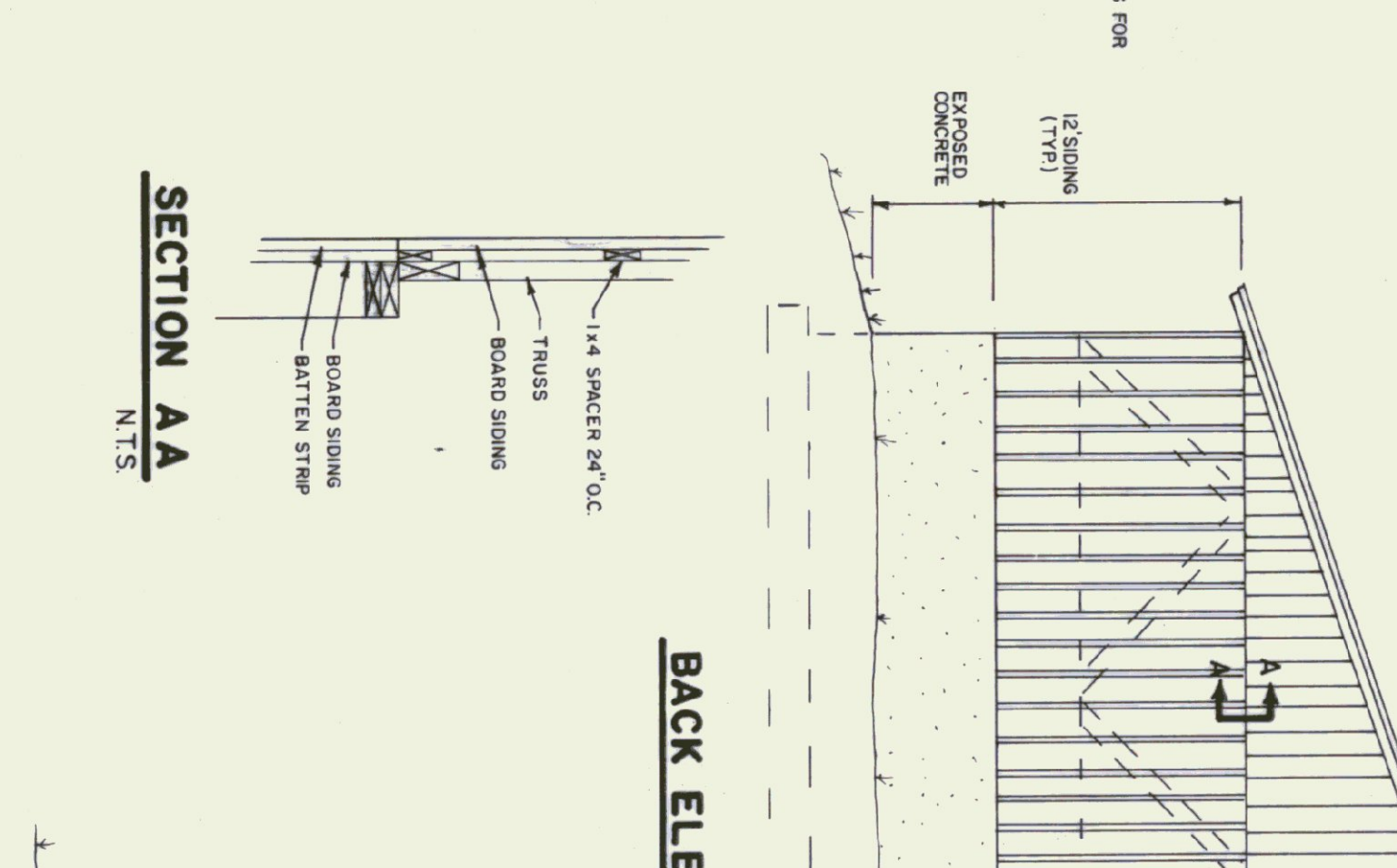
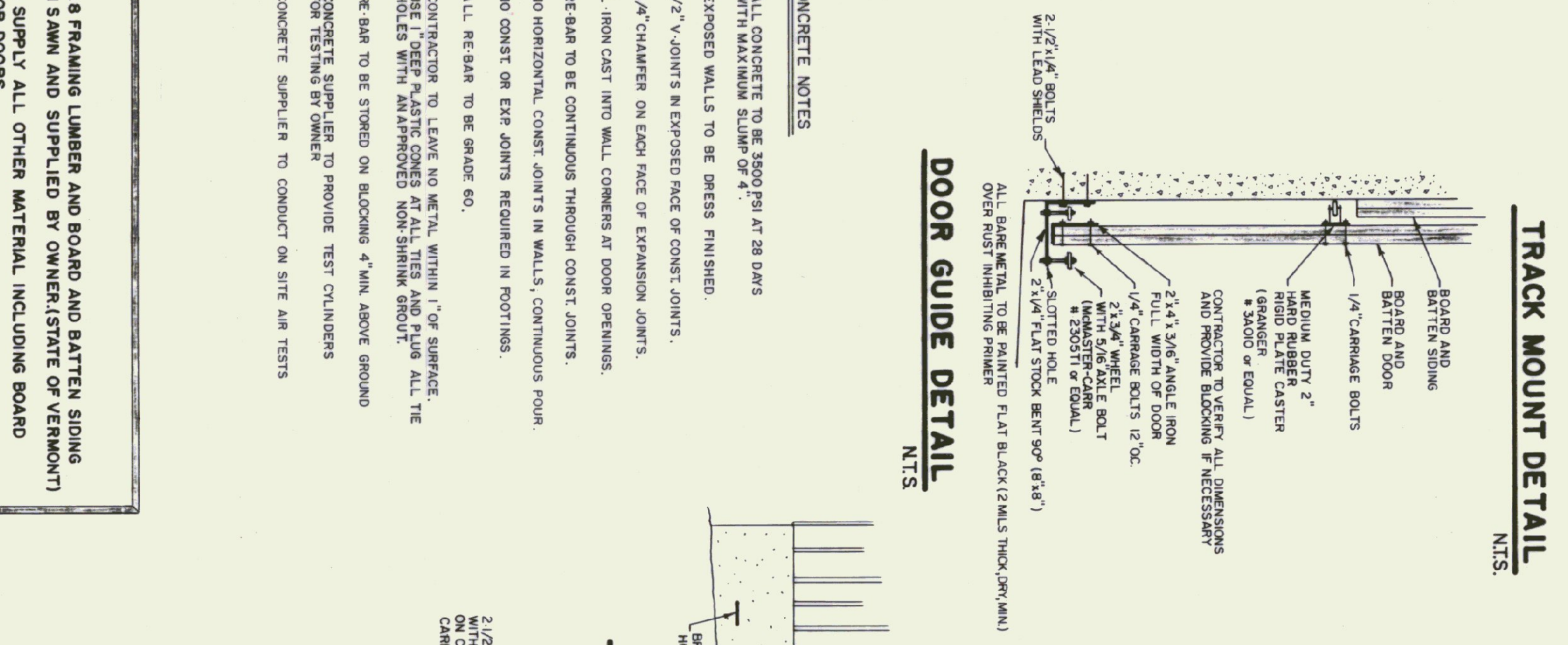
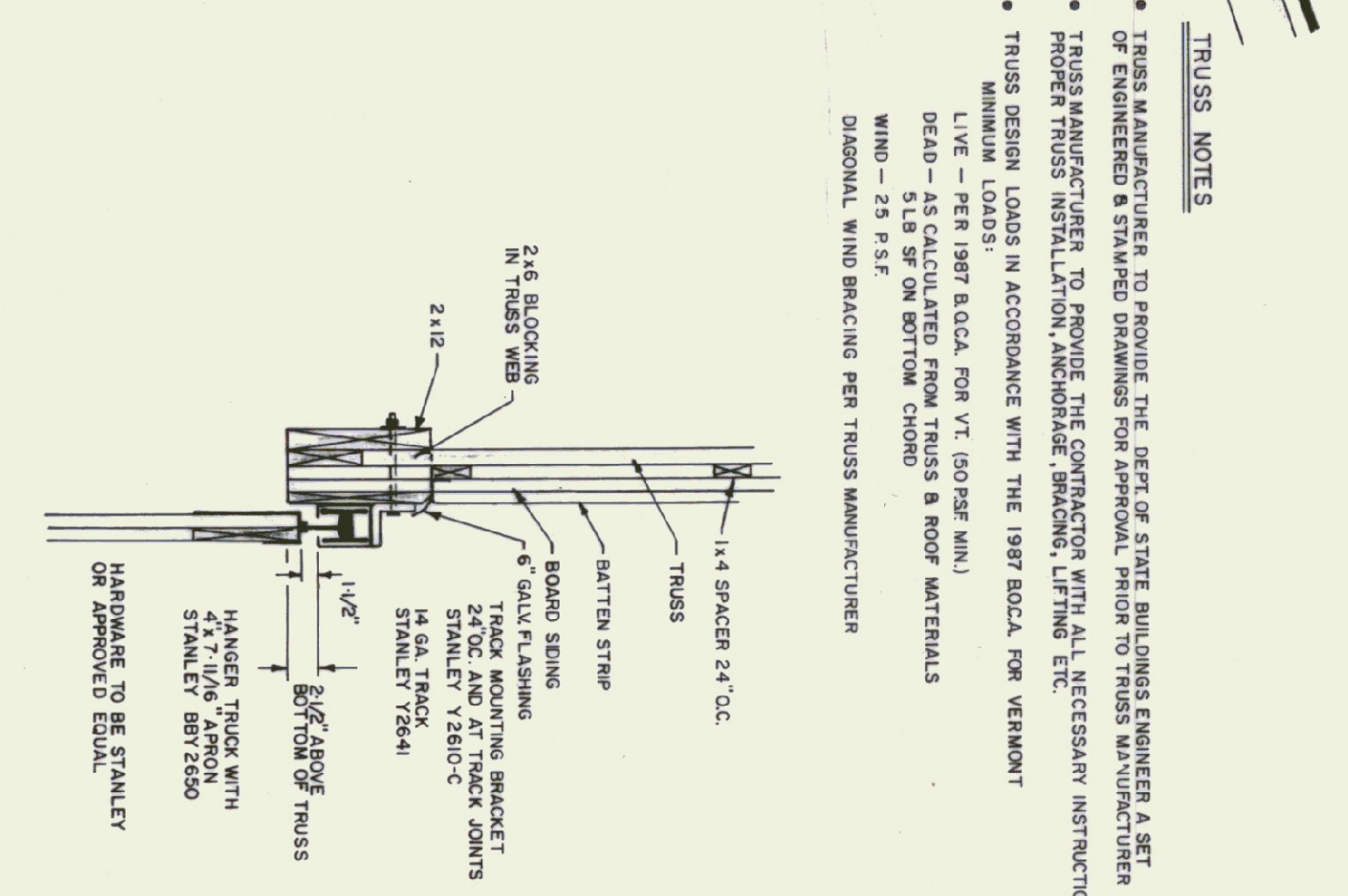
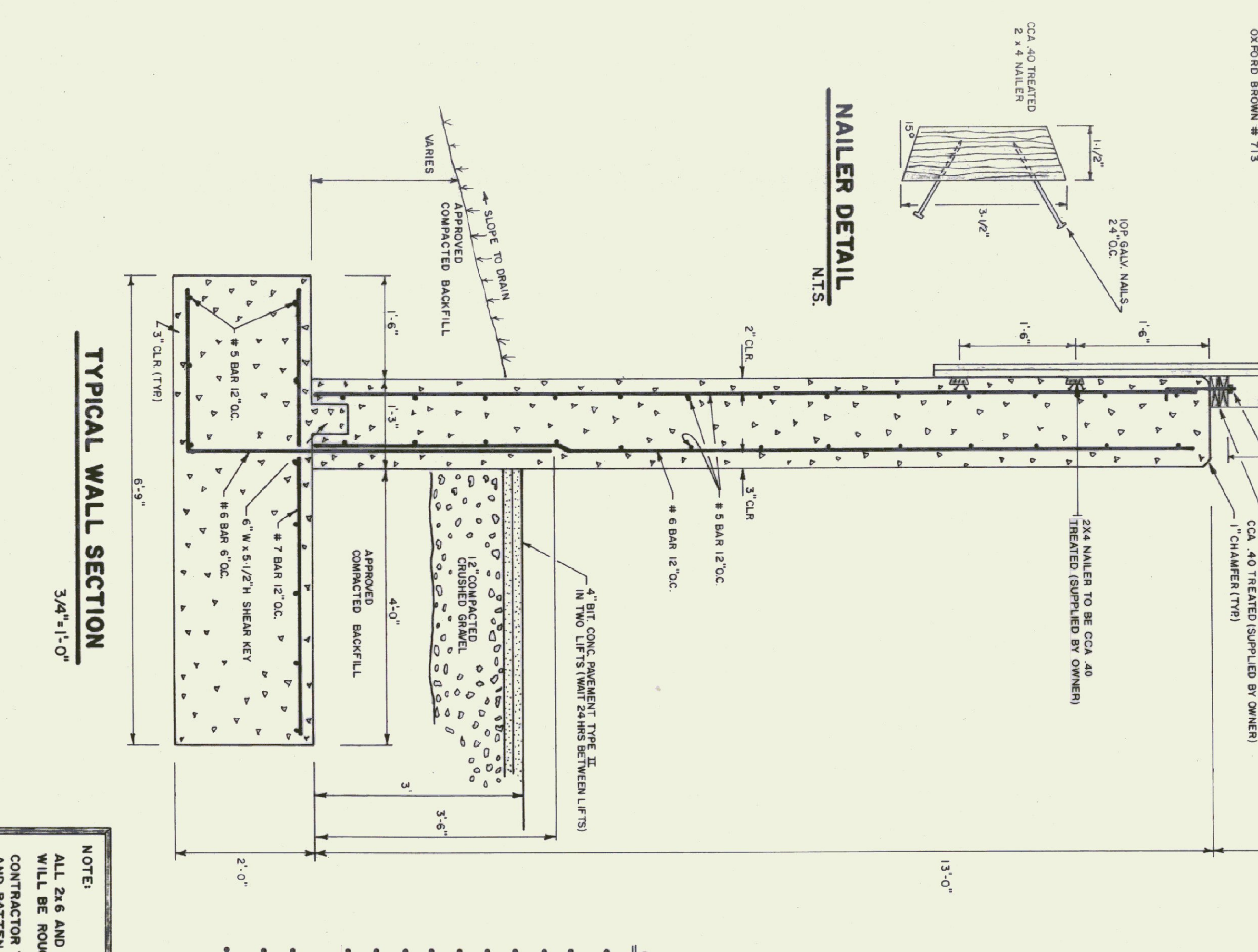
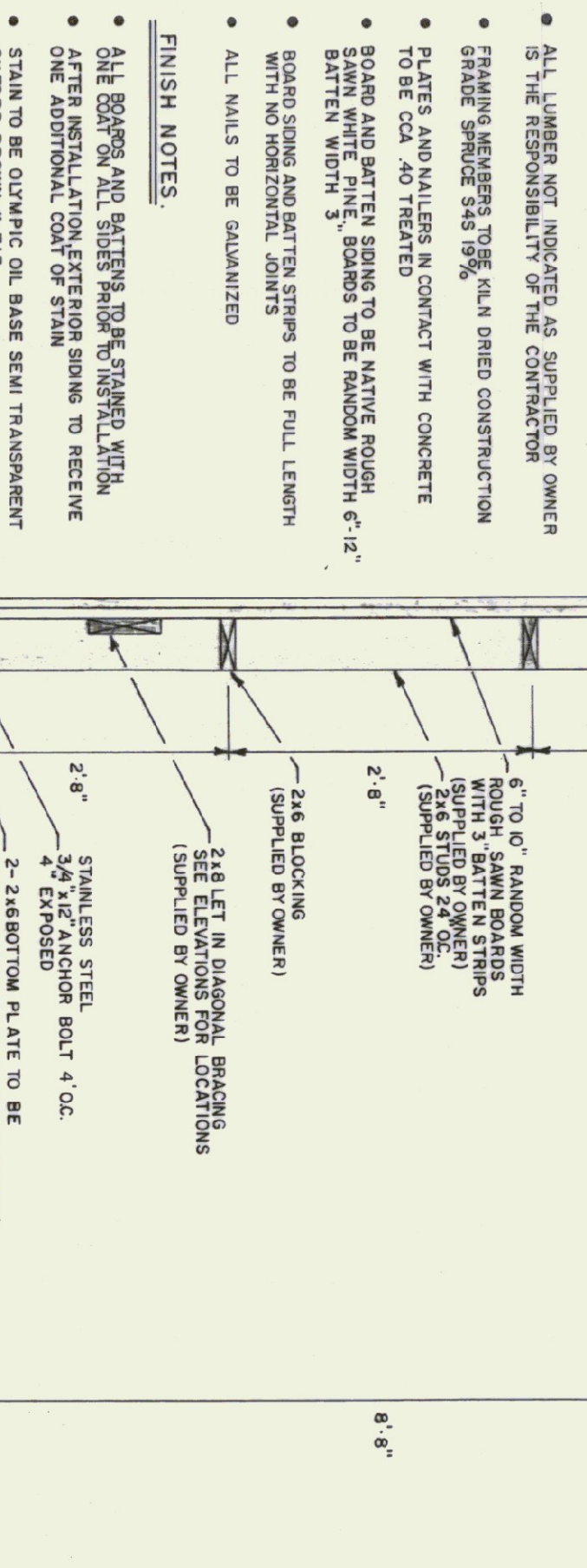
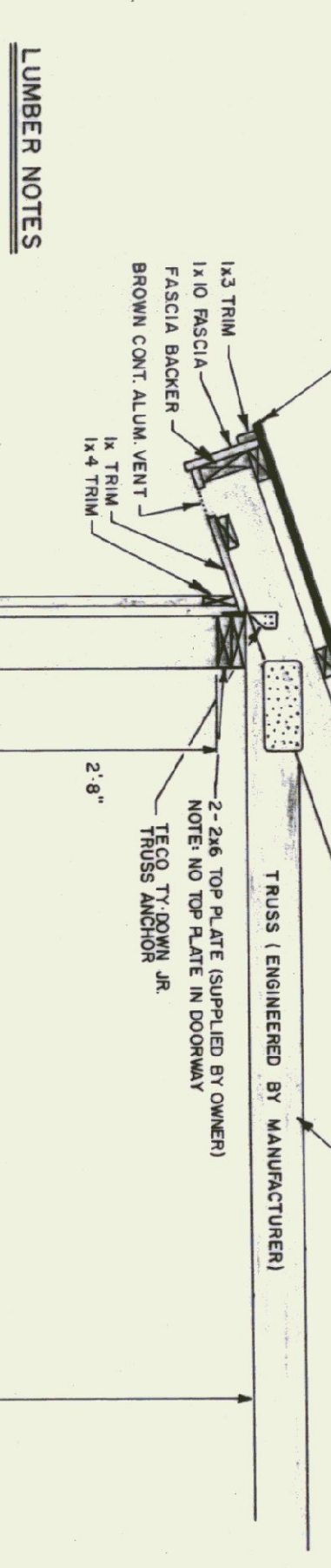




STATE OF VERMONT  
DEPARTMENT OF STATE BUILDINGS  
AGENCY OF ADMINISTRATION  
MONTPELIER, VERMONT

**SITE PLAN**  
AGENCY OF TRANSPORTATION  
CASTLETON MAINTENANCE FACILITY

CASTLETON		VERMONT	
DATE:	JULY 9, 1993	SCALE:	1" = 20'
DRAWN BY:	B. MCAVOY	APPROVED BY:	<i>[Signature]</i>
		REVISIONS:	
		DWG. NO.	S-1
			1 OF 2



**NOTE:**  
ALL 2x6 AND 2x8 FRAMING LUMBER AND BOARD AND BATTEN SIDING WILL BE ROUGH SAWN AND SUPPLIED BY OWNER (STATE OF VERMONT) CONTRACTOR TO SUPPLY ALL OTHER MATERIAL, INCLUDING BOARD AND BATTEN FOR DOORS.

**CORNER DETAIL**  
N.T.S.

**DOOR BRACKET DETAIL**  
N.T.S.

**CORNER GUARD**  
N.T.S.

**STATE OF VERMONT**  
DEPARTMENT OF STATE BUILDINGS  
AGENCY OF ADMINISTRATION  
MONTPELIER, VERMONT

**AGENCY OF TRANSPORTATION**  
50' X 64' SALT SHED  
CASTLETON MAINTENANCE FACILITY

CASTLETON  
DATE: JULY 9, 1993  
DRAWN BY: B. MCAVOY  
SCALE: AS NOTED  
APPROVED BY: [Signature]  
REVISIONS:  
DWG. NO. A-1  
2 OF 2