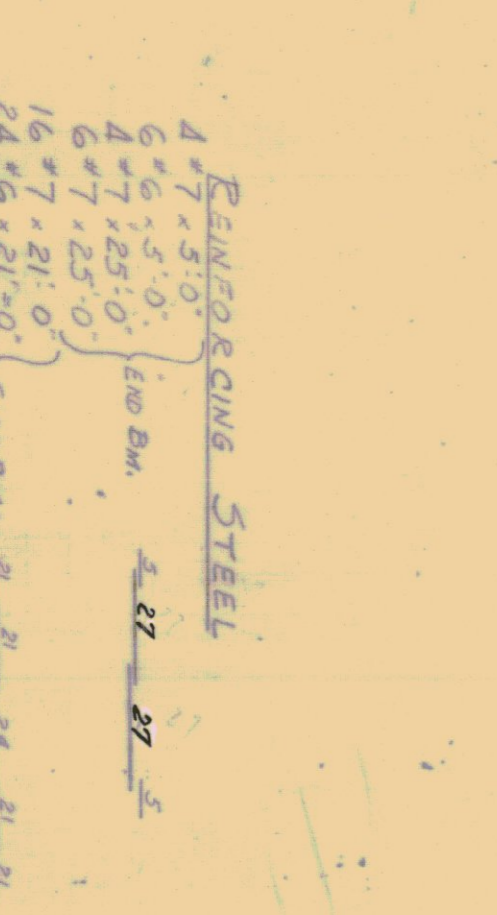
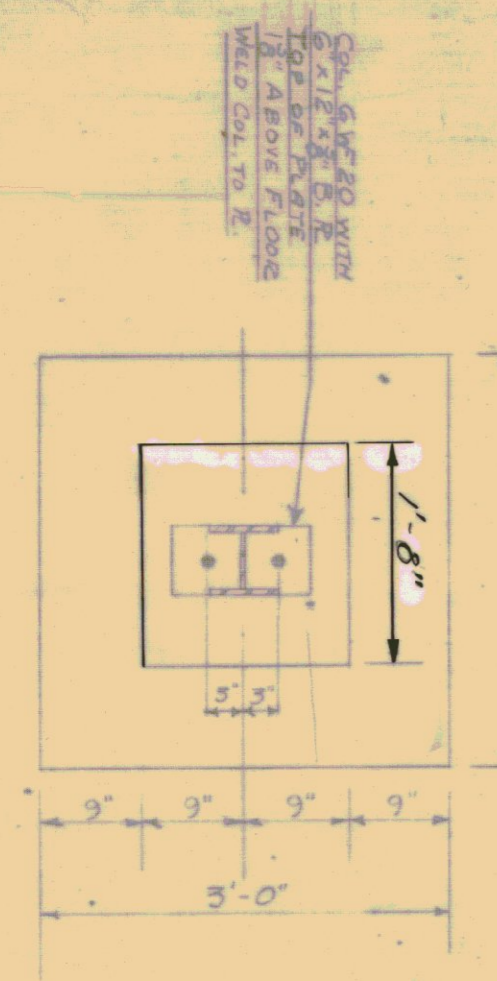
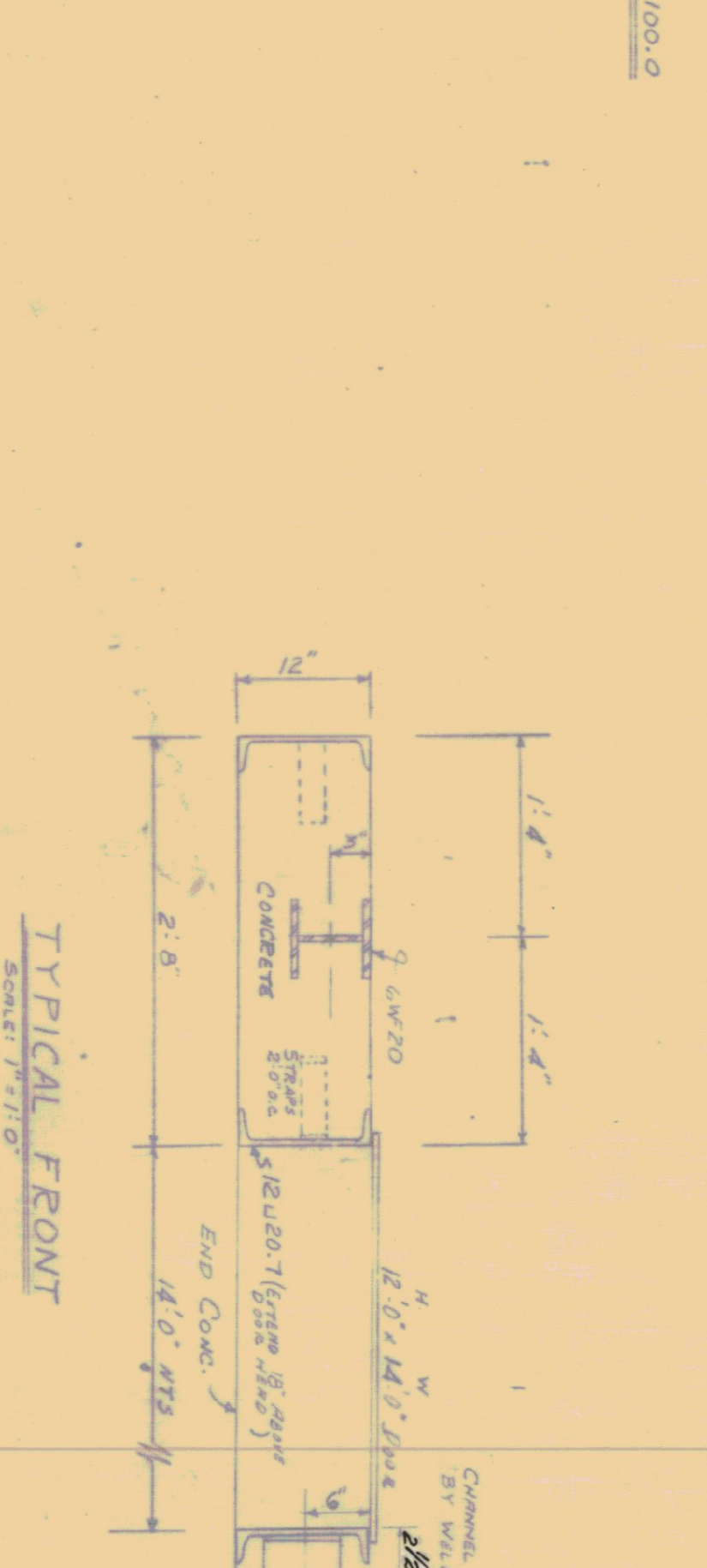
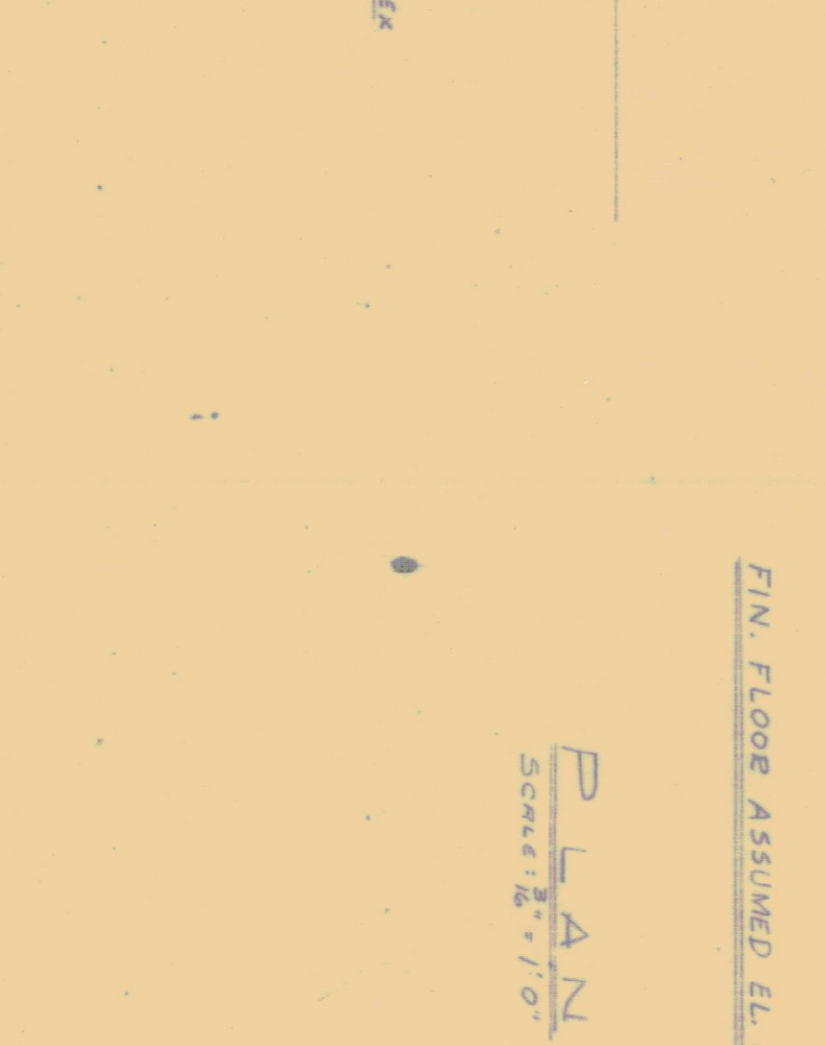
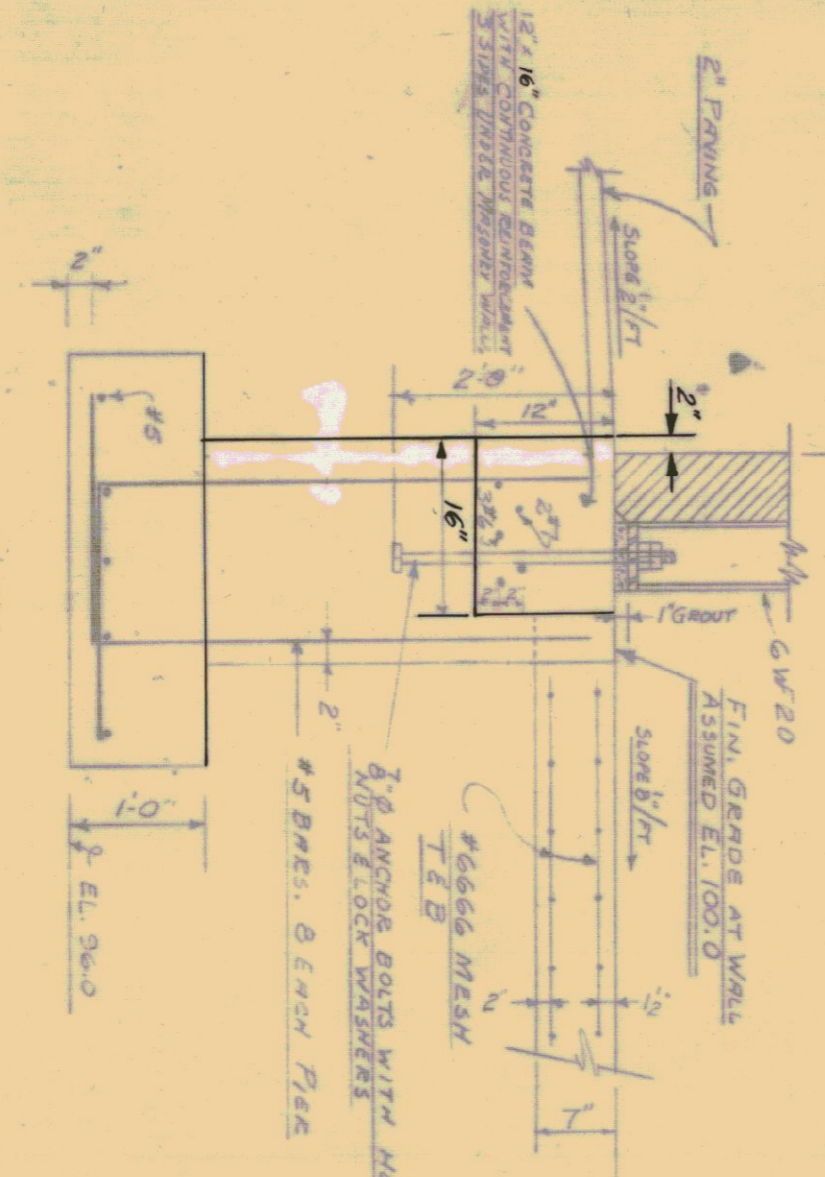
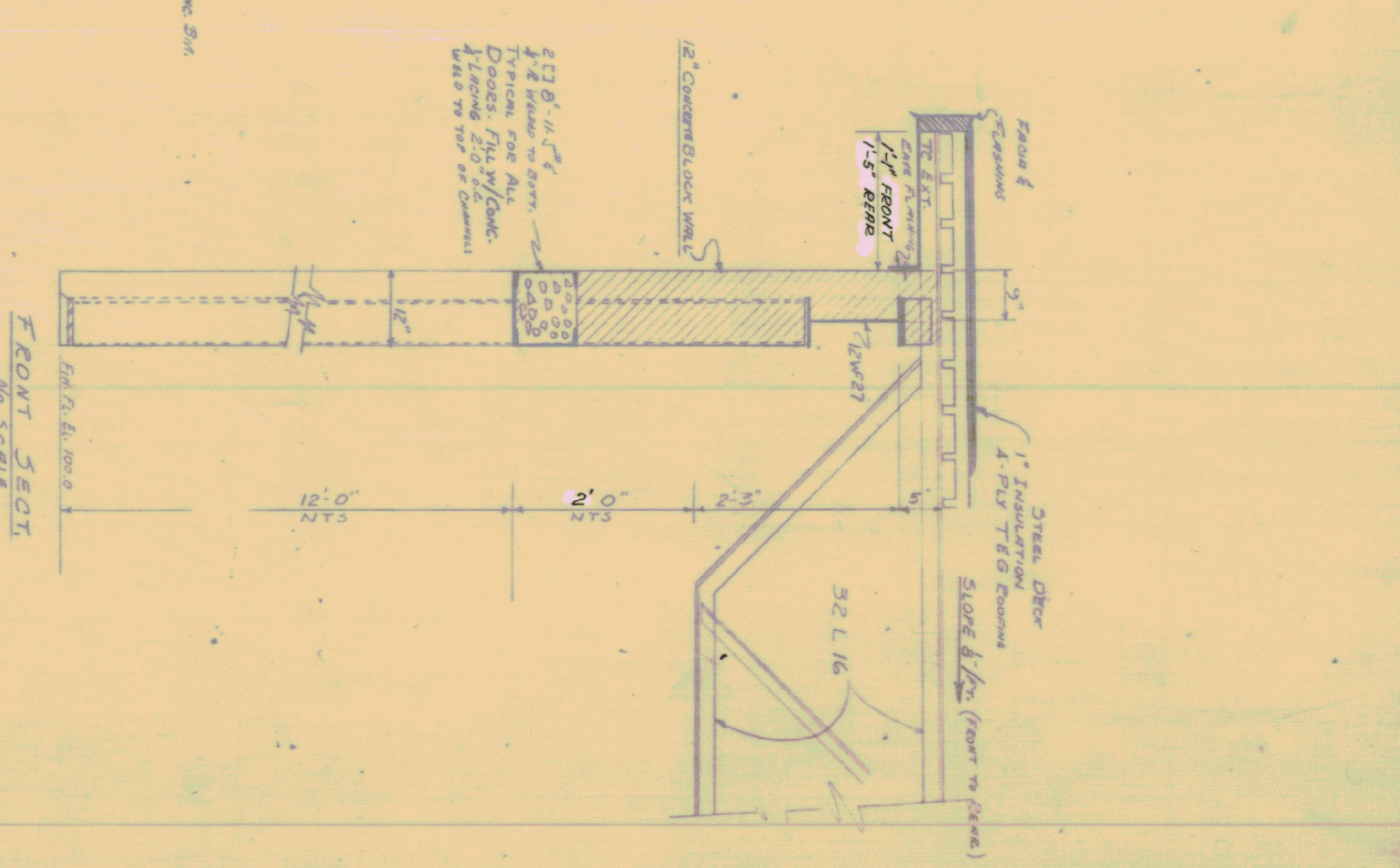
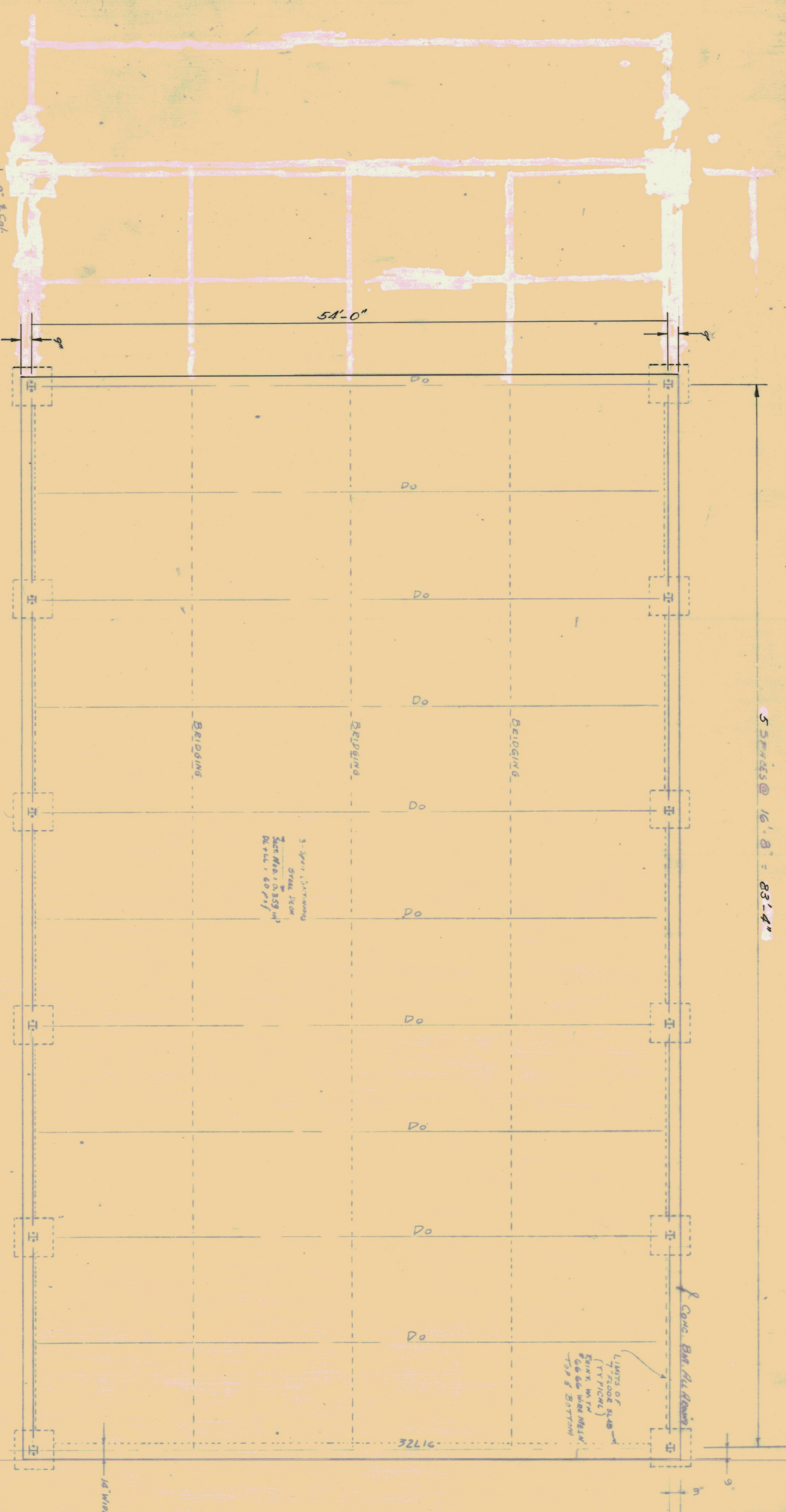


5 Spacing @ 16' 8" = 83'-4"



TYPICAL FOOTING
Scale: 1/4\"/>

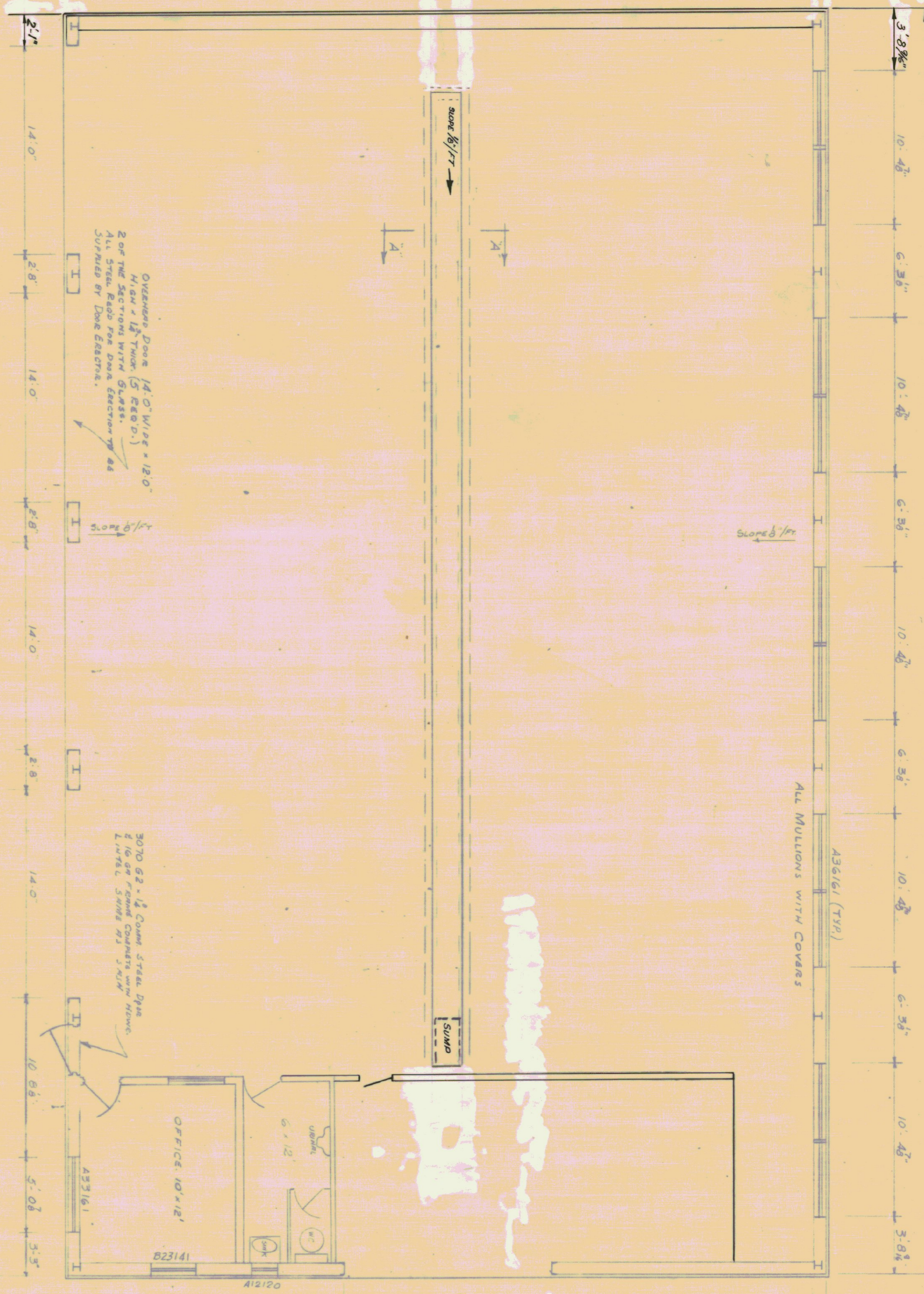
- REINFORCING STEEL**
- 4 #7 @ 5'-0" END BM. 21'-5"
 - 6 #6 @ 5'-0" END BM. 21'-5"
 - 4 #7 @ 25'-0" 21'-5"
 - 6 #7 @ 25'-0" 21'-5"
 - 16 #7 @ 21'-0" 21'-5"
 - 24 #6 @ 21'-0" 21'-5"
 - 4 #7 @ 21'-0" 21'-5"
 - 6 #6 @ 21'-0" 21'-5"
- Side B.M.s 2'-24" 21'-21"
- All Laps 2'-0"

STRUCTURAL SHOP DRAWINGS ARE TO BE APPROVED BY THE ENGINEER BEFORE FABRICATION IS BEGUN

STATE OF VERMONT
HIGHWAY DEPARTMENT
GARAGE FOR DISTRICTS NOS. 3 & 6
CASTLETON
MORRISVILLE
DESIGN BY: FENASSO
OCTOBER 1958
REV. MAY 20, 1964
G.H. PORCE

Rev. Jan. 10, 1959

5 SPACES @ 16'-8" 83'-4"

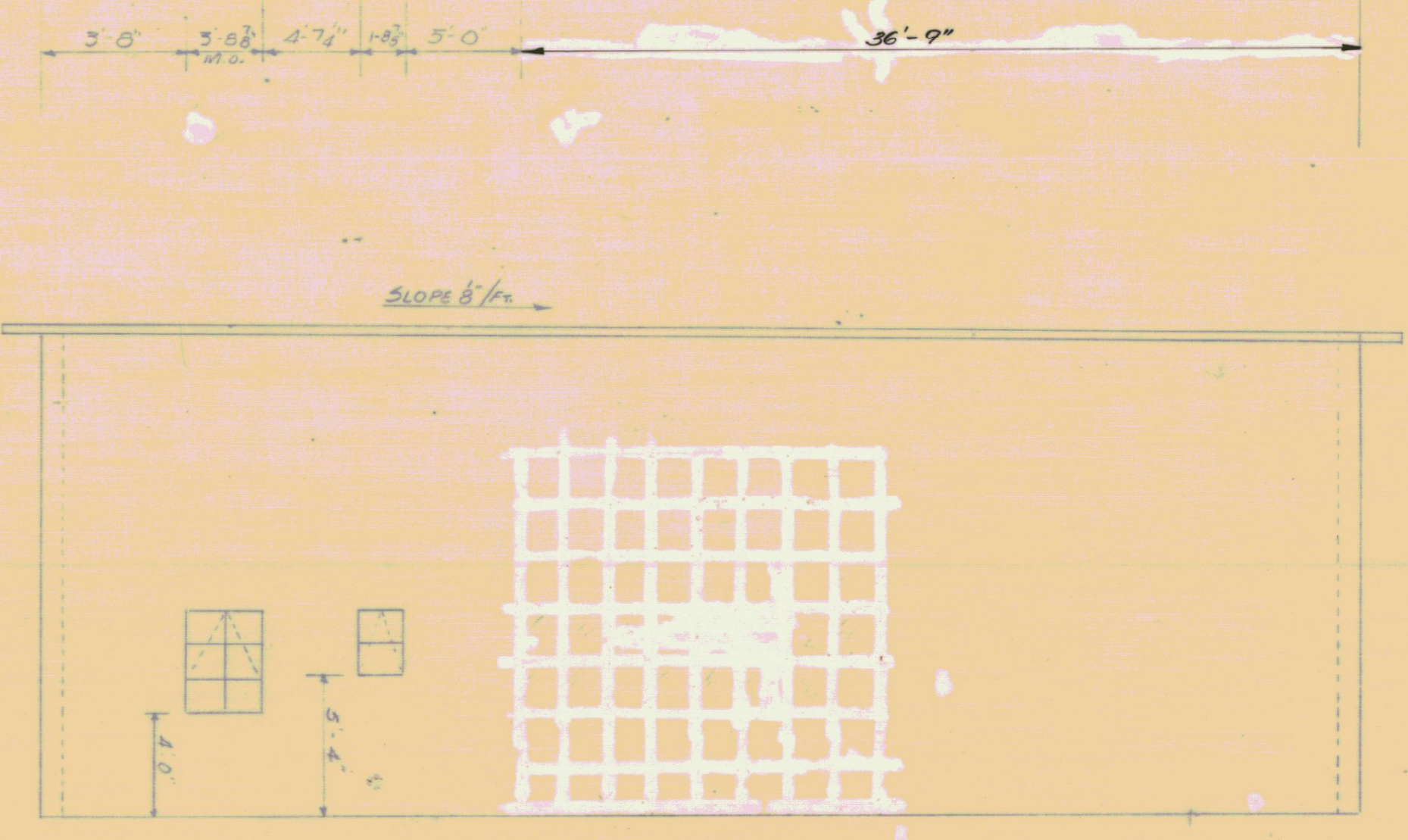


PLAN
SCALE 1/2"

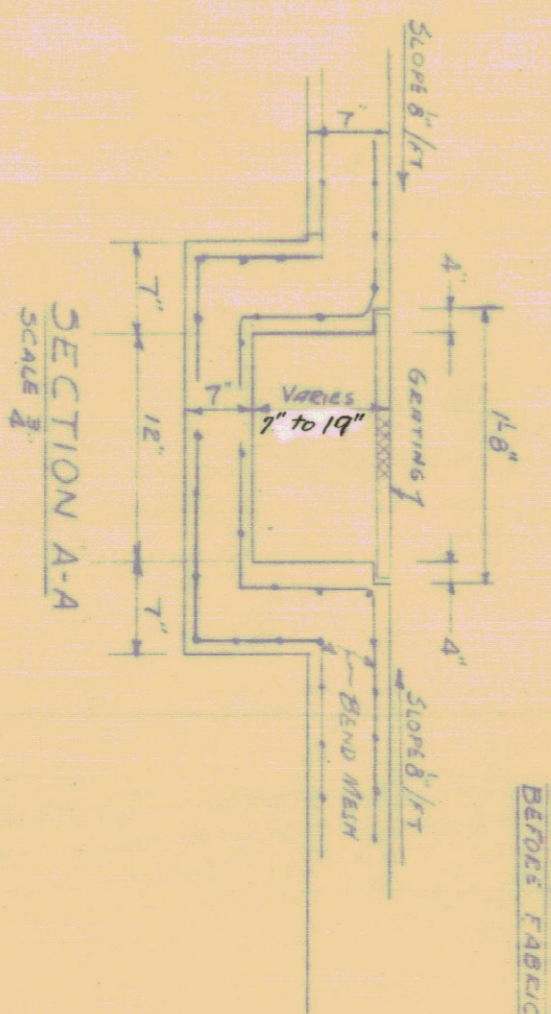


FRONT ELEVATION - SCALE 1/2"

REAR ELEVATION - SCALE 1/2"



END ELEVATION
SCALE 1/2"



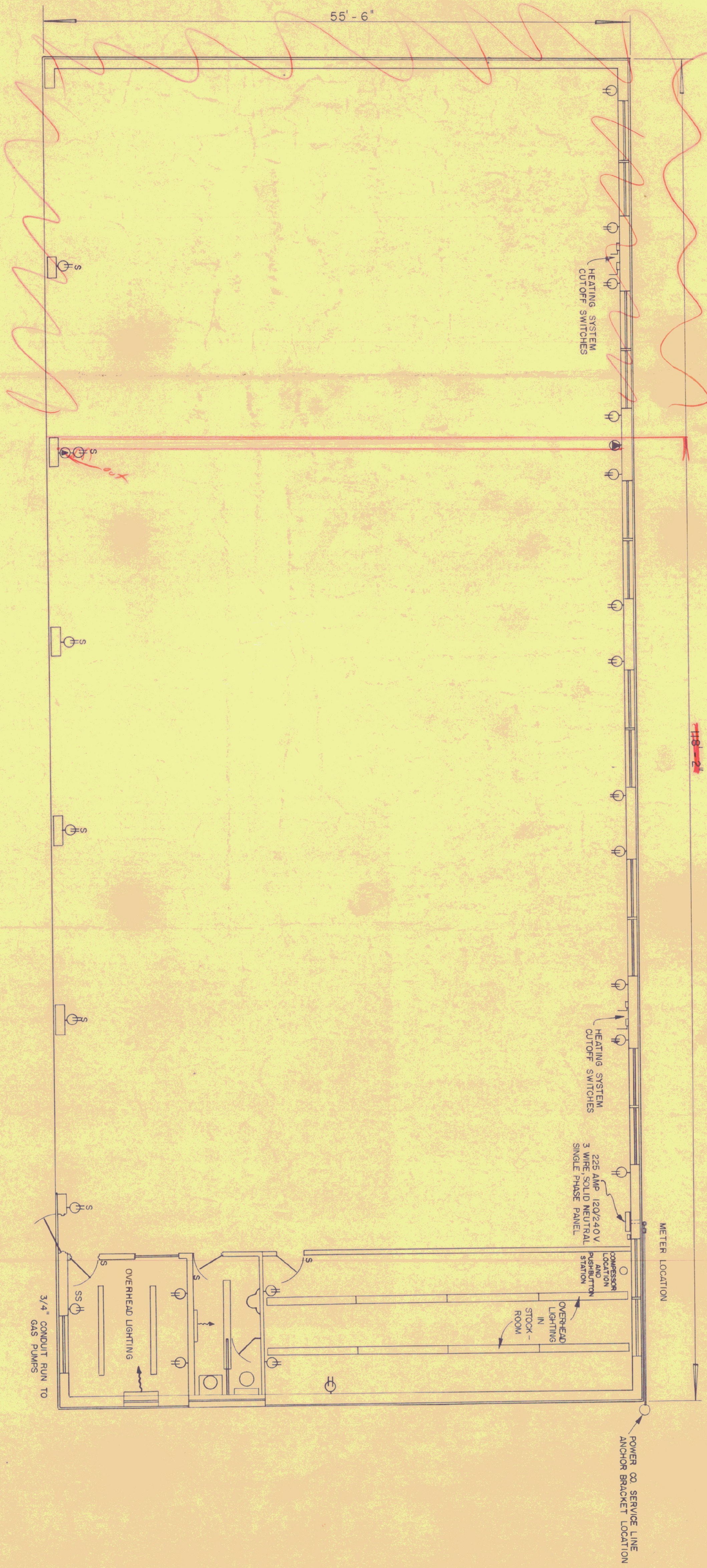
SECTION A-A
SCALE 1/2"

SHOP DRAWINGS ARE TO BE SUBMITTED FOR APPROVAL BEFORE FABRICATION IS BEGUN

STATE OF VERMONT
HIGHWAY DEPARTMENT
GARAGE FOR DISTRICTS NOS. 3 & 6
CASTLETON
MOBBISVILLE
DESIGN BY: FENNAN & CO.
OCTOBER 1958
REV. MAY 20, 1964
G. H. PIERCE

Fig. No. 10-573

911.5



● 230 V. WELDER OUTLETS
 ~~~~ RADIENT HEATERS

**ROYALTON**

STATE OF VERMONT  
 HIGHWAY DEPARTMENT  
 GARAGE FOR DISTRICTS 3 & 4  
*Castleton & Morrisville*  
 VT. ROUTE 14

WIRING LAYOUT 2

G.A. PIERCE JUNE 1962 1964