

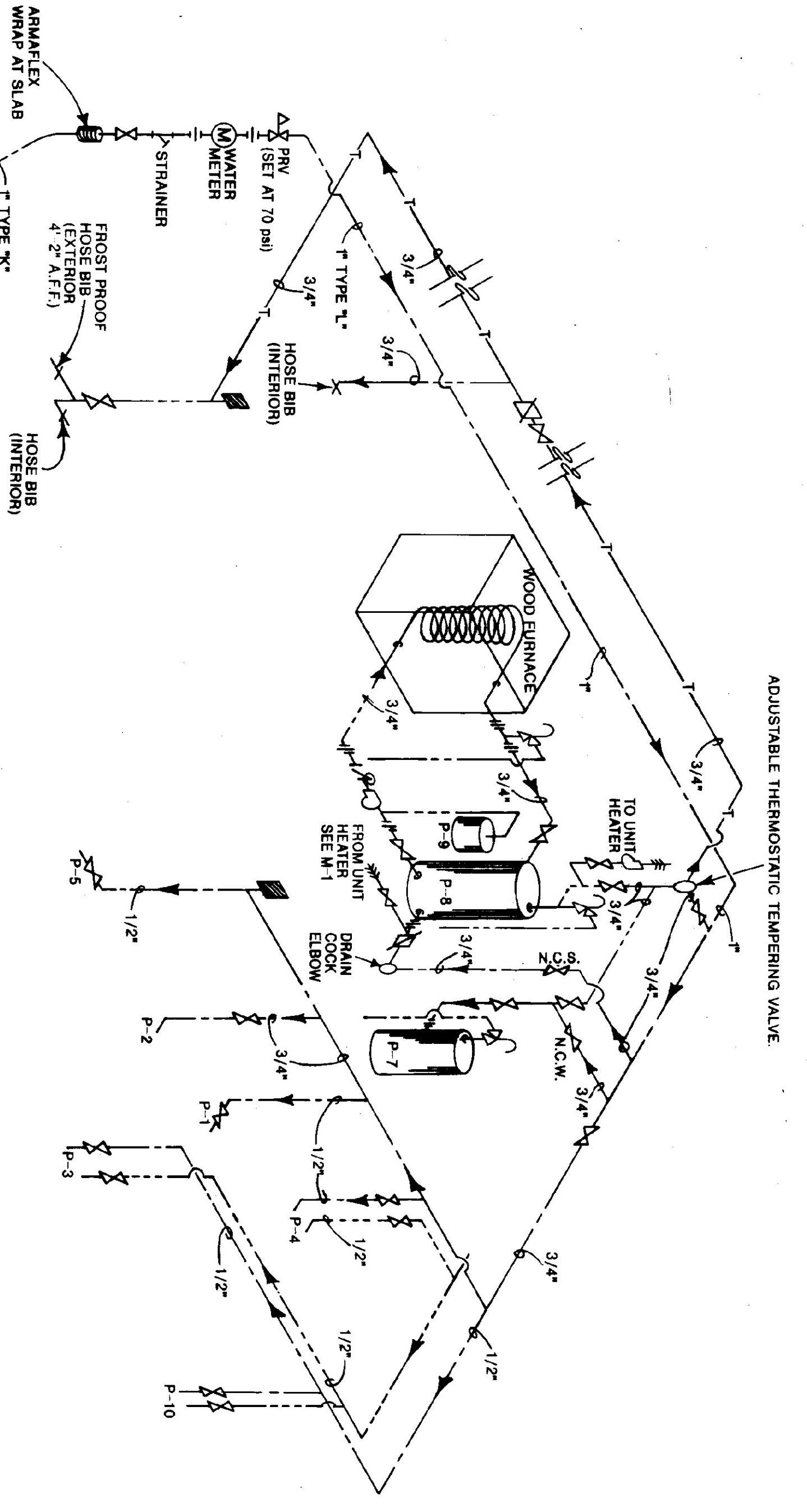
HOT & COLD WATER PIPING PLAN
SCALE: 1/8" = 1'-0"

PARTIAL PLUMBING PLAN
SCALE: 1/4" = 1'-0"

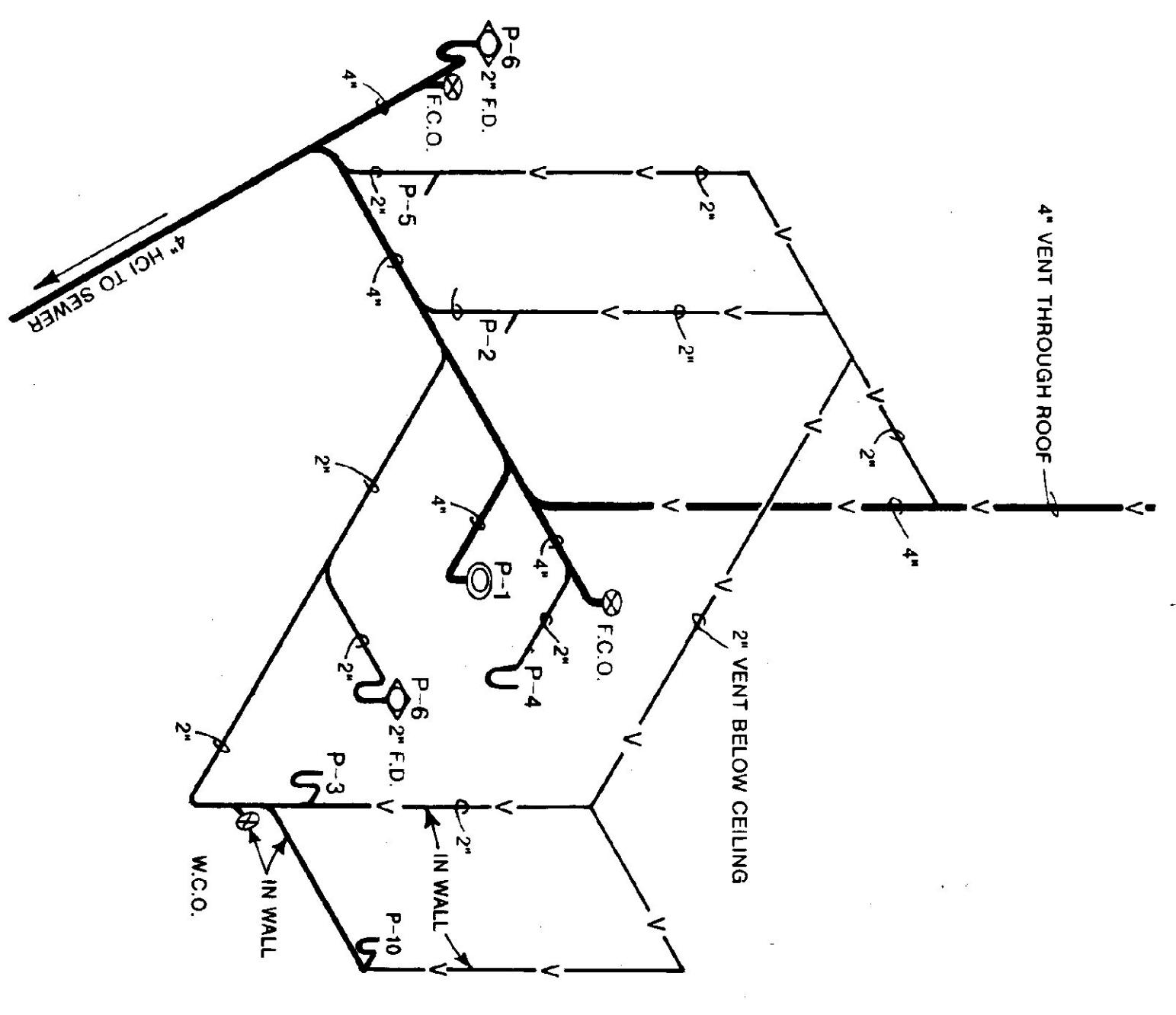
PLUMBING PLAN
MEZZANINE LEVEL
SCALE: 1/4" = 1'-0"

PLUMBING SYMBOLS FOR PIPING, VALVES & FITTINGS

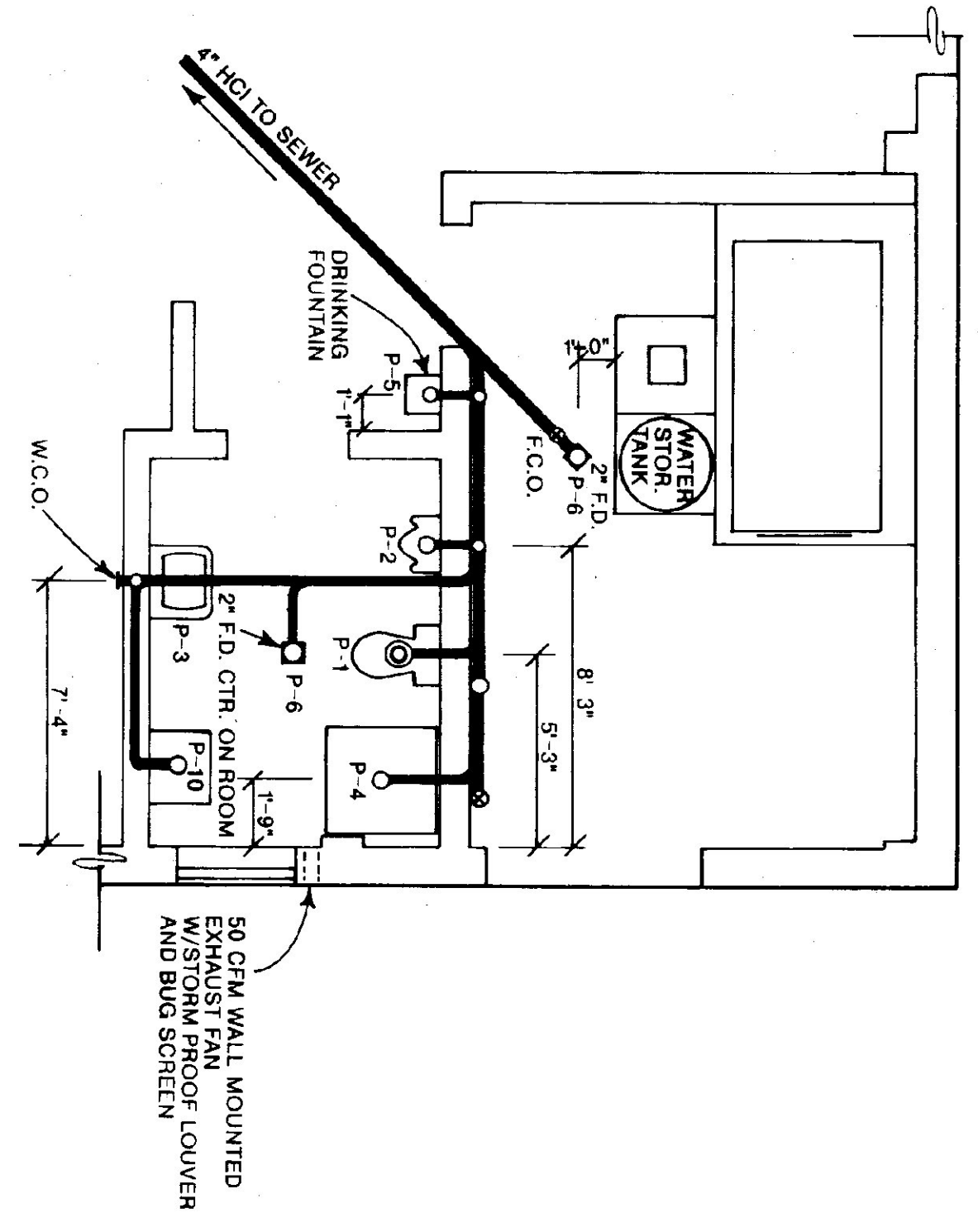
	COLD WATER		UNION
	HOT WATER		HOSE BIB
	PTR VALVE DRAIN		FLOOR DRAIN W/"TRAP
	WASTE PIPING		TOILET FLANGE
	VENT PIPING		FLOOR CLEANOUT
	TEMPERED WATER		NORMALLY CLOSED IN SUMMER
	FLOW DIRECTION		NORMALLY CLOSED IN WINTER
	CHECK VALVE		GATE OR BALL VALVE
	BACKFLOW PREVENTER		CIRCULATOR TACO
	PRESS & TEMP RELIEF VALVE W/ DRAIN TO S		N.C.S.
	A.F.F.-CUT END @ 45°		N.C.W.
	WATER HAMMER ARRESTOR		NORMALLY CLOSED IN SUMMER



HOT & COLD WATER PIPING RISER DIAGRAM
NOT TO SCALE



SANITARY WASTE & VENT PIPE RISER DIAGRAM
NOT TO SCALE



SANITARY WASTE & VENT PLAN
SCALE: 1/4" = 1'-0"

FIGURE SCHEDULE

ABR.	FIXTURE	DESCRIPTION	NOTES	DRN.	VENT	COLD	HOT
P-1	TOILET	AMERICAN STANDARD "CADET" #2108 500 WHITE VITREOUS CHINA, HANDBICAP, 16" HIGH SEAT, 16" HIGH SEAT TO BE ELONGATED, OPEN FRONT WITH BOLT CAPS. PROVIDE SUPPLY STOP.		4"	2"	1/2"	-
P-2	URINAL	AMERICAN STANDARD "WASHBROOK" #650 010, 3/4" TOP SPUD, WHITE VITREOUS CHINA, WALL HUNG, WASH OUT URINAL, WITH SLOAN ROVAL 186 FLUSH VALVE & COMPATIBLE CARRIER.	MOUNT WITH RIM @ 17" A.F.F.	2"	2"	3/4"	-
P-3	LAVATORY	AMERICAN STANDARD "DEGLYN" #0321 012 WALL HUNG, WHITE VITREOUS CHINA, FRONT OVERFLOW, 4" CENTER FAUCET HOLES, FITTINGS SHALL BE CHROME SINGLE LEVER CONTROL, W/POP UP DRAIN & P-TRAP. AMERICAN STANDARD "RELIANT" # MODEL 2385 000.	MOUNT WITH RIM @ 34" A.F.F.	2"	2"	1/2"	1/2"
P-4	SHOWER	FIBERGLASS, 36" x 36", DURASTALL MODEL 144, WHITE, FITTINGS: CHROME, SINGLE LEVER CONTROL, PRESSURE BALANCED WITH SHOWER/SHOWER STOP, AMERICAN STANDARD "RELIANT" # MODEL #1495 501, PROVIDE A CHROME STRAINER AND P-TRAP.		2"	2"	1/2"	1/2"
P-5	DRINKING FOUNTAIN	AMERICAN STANDARD #8310 112, WHITE VITREOUS CHINA, SELF CLOSING VALVE, PROVIDE P-TRAP.		4"	4"	1/2"	-
P-6	FLOOR DRAIN	SLOTTED ROUND COVER, DRAIN SHALL DISCHARGE THROUGH A P-TRAP, OUTLET OF P-TRAP SHALL HAVE A TWO INCH DRAIN WITH INTEGRAL FLOOR CLEANOUT.	PROVIDE W/TRAP PRIMER FROM COLD WATER AT LAVATORY	2"	-	-	-
P-7	HOT WATER HEATER	30 GAL. ENERGY SAVING WITH 2" FOAM INSULATION, 20 GPH RECOVERY AT 90° TEMP. RISE. BRADFORD WHITE MODEL M-II-30R8 DS OR APPROVED EQUAL.	PROVIDE P & T RELIEF VALVE	-	-	1/2"	1/2"
P-8	CLEANOUTS	AS INDICATED OR REQUIRED BY CODE. CLEANOUTS SAME SIZE AS PIPE. FLOOR CLEANOUTS TO BE SET FLUSH W/FLOOR. ZURN MODEL Z1400 2 OR APPROVED EQUAL. WALL C.O.'S SHALL BE ZURN MODEL Z-1400-1 OR APPROVED EQUAL.	PROVIDE P & T RELIEF VALVE & VACUUM BREAKER	-	-	3/4"	3/4"
P-9	STORAGE TANK	STONE LINED 120 GAL. TANK.		-	-	-	-
P-10	EXPANSION TANK	AMTROL "THERM-X-TROL ST-25V" FINI T-1, WALL HUNG, W/STRAINER & PLUG		-	-	-	-
P-10	LAUNDRY TUB			1 1/2"	1 1/2"	1/2"	1/2"

STATE OF VERMONT
DEPARTMENT OF STATE BUILDINGS
AGENCY OF ADMINISTRATION
MONTPELIER, VERMONT

VERMONT AGENCY OF TRANSPORTATION
4 BAY MAINTENANCE GARAGE
PLUMBING PLAN
VERMONT

BRANDON,
DATE: JUNE 1997
SCALE: AS NOTED
DRAWN BY: A. POULIN
APPROVED BY: [Signature]

REVISIONS:
DWG. NO. P-1
22 OF 23