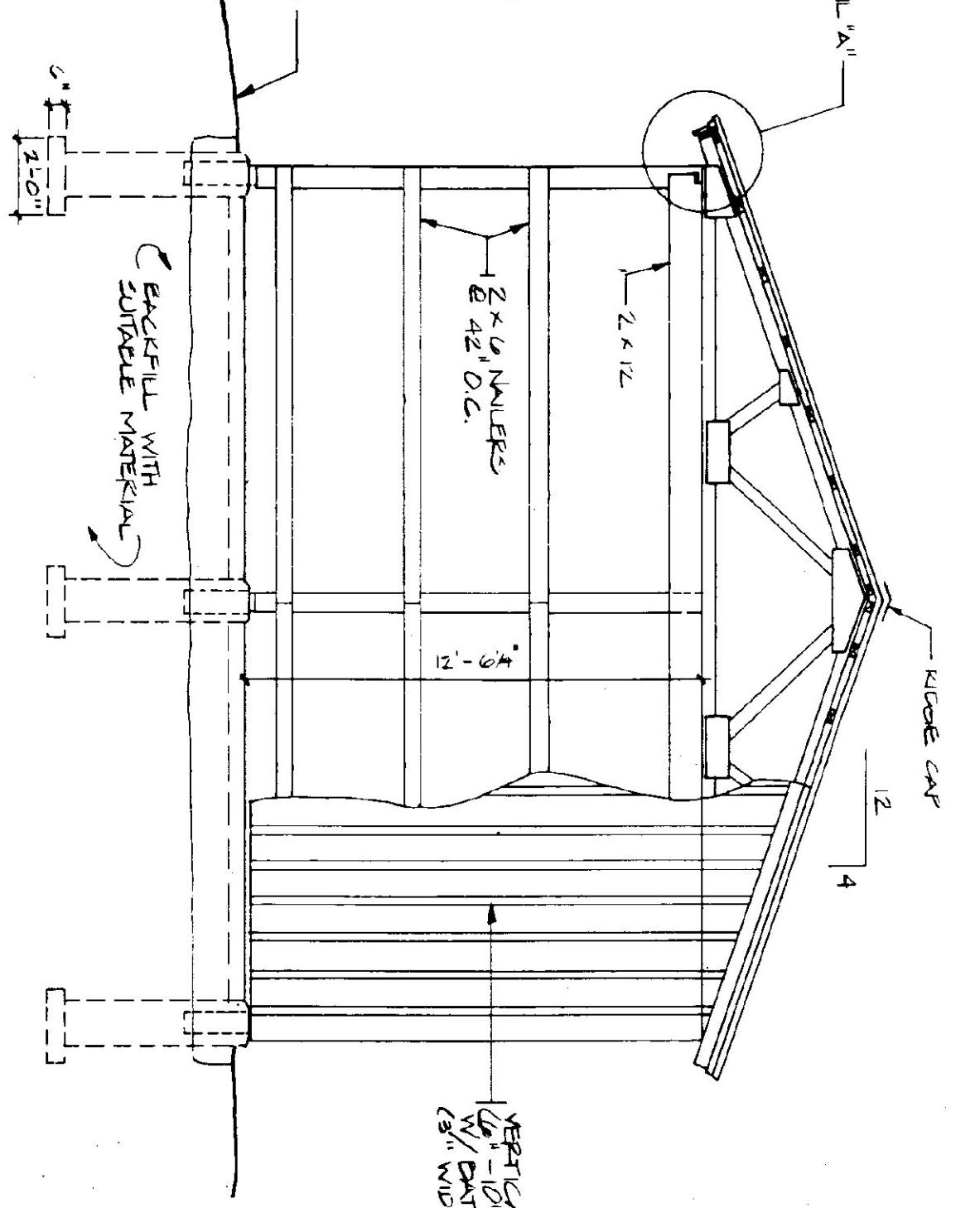
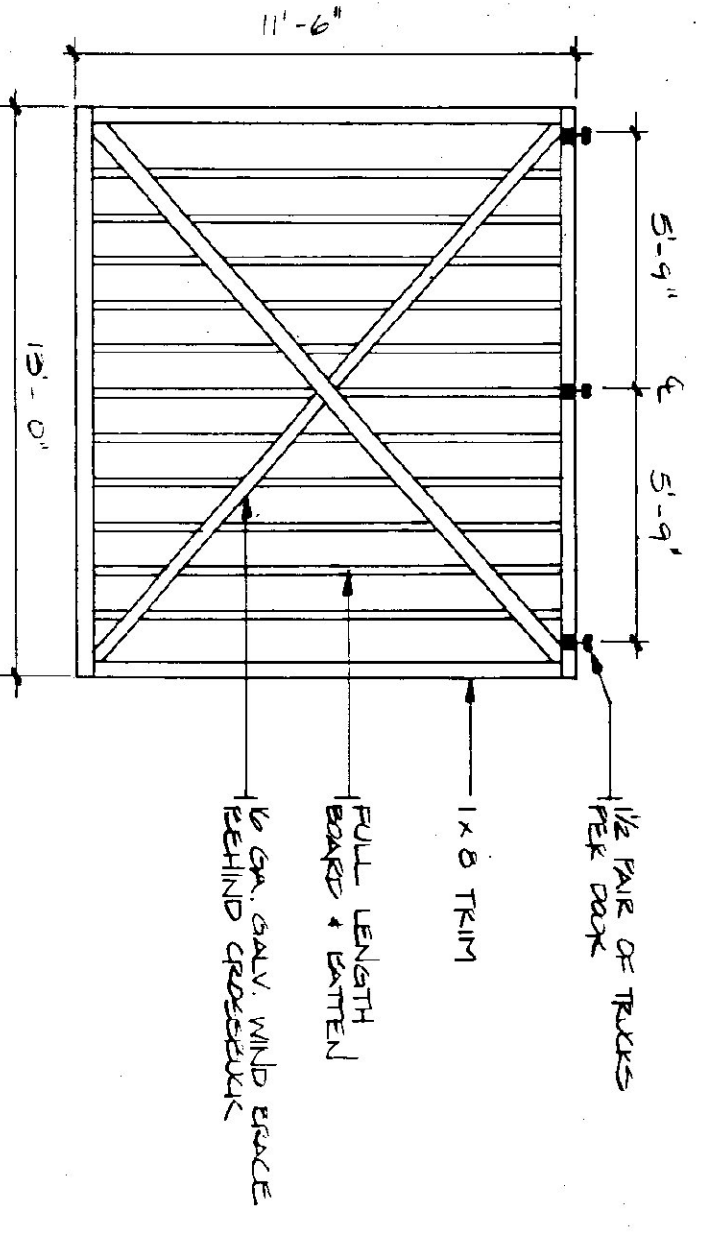


FRONT ELEVATION
SCALE: 1/4" = 1'-0"

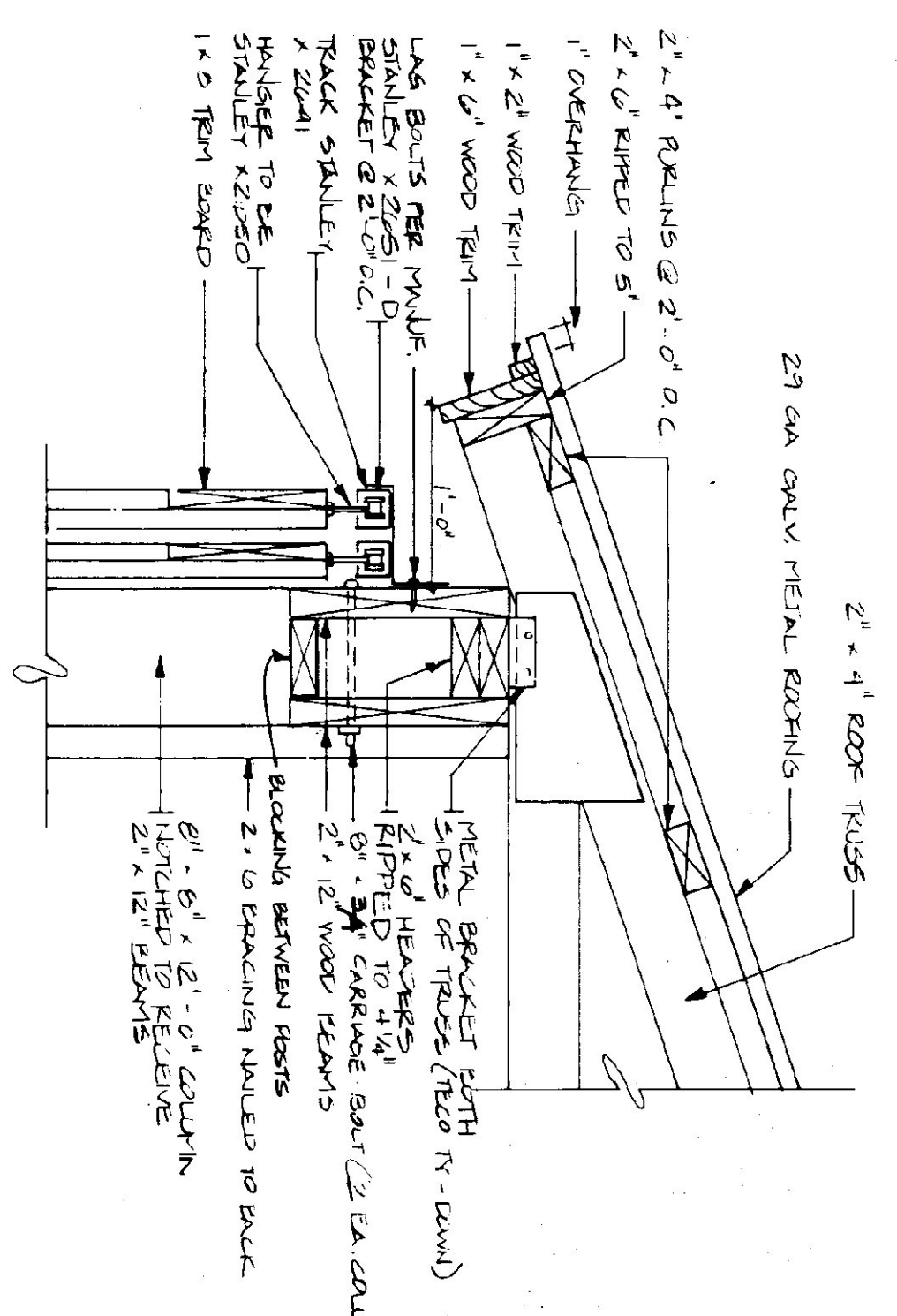


END ELEVATION
SCALE: 1/4" = 1'-0"

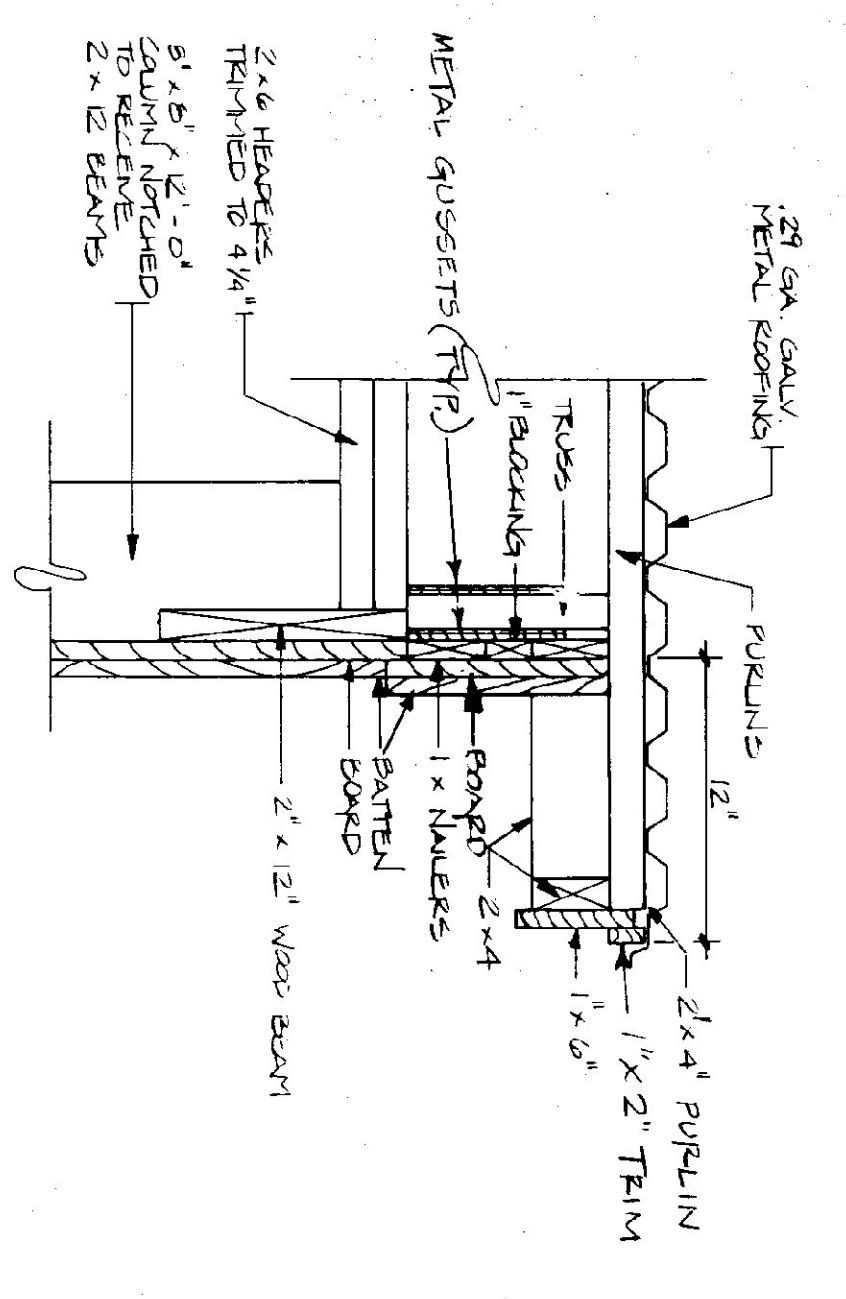


DOOR DETAIL
N.T.S. (TYPICAL OF 4)

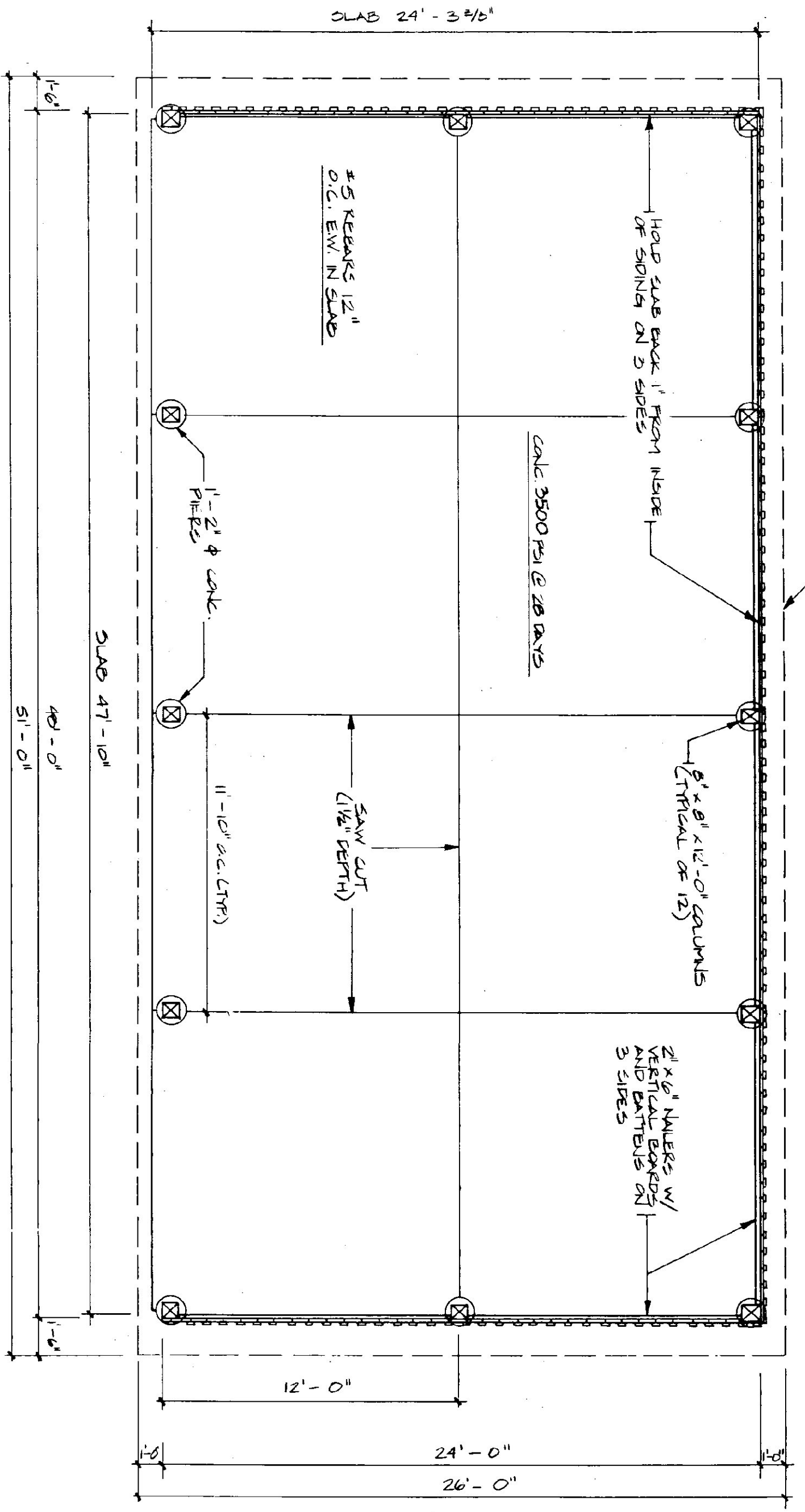
- TRUSS NOTES:**
- 1) TRUSS MANUFACTURER TO PROVIDE THE DEPT. OF STATE BUILDINGS BRANDED AND STAMPED DRAWINGS FOR APPROVAL PRIOR TO TRUSS MANUFACTURE.
 - 2) TRUSS MANUFACTURER TO PROVIDE THE CONTRACTOR WITH ALL NECESSARY INSTRUCTIONS FOR PROPER TRUSS INSTALLATION, INCLUDING BRACING, LIFTS, ETC.
 - 3) TRUSS DESIGN LONGER IN ACCORDANCE WITH THE 1987 B.O.C.A. MINIMUM LOADS:
- LIVE — PER 1987 B.O.C.A. SJK-VT (60 P.S.F. MIN.)
 DEAD — AS CALCULATED FROM TRUSSES + ROOF MATERIALS
 WIND — 25 P.S.F.
 DIAGONAL WIND BRACING PER TRUSS MANUF.



DETAIL "A"
SCALE: 1 1/2" = 1'-0"

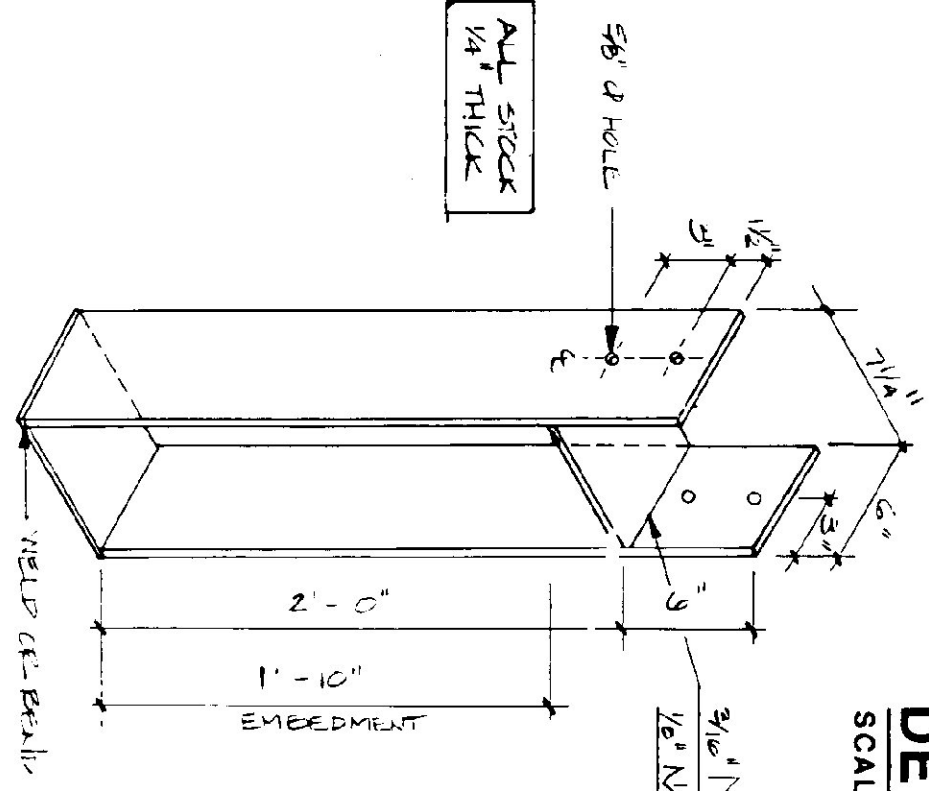


RAKE DETAIL
SCALE: 1 1/2" = 1'-0"



SHED PLAN
SCALE: 1/4" = 1'-0"

NOTE:
USE #5 REBAR @ 1'-0" O.C. EACH WAY WITH 2" COVER.



COLUMN BASE ANCHOR
SCALE: 1 1/2" = 1'-0"

- LUMBER NOTES:**
- 1) FRAMING MEMBERS TO BE KILN DRIED CONSTRUCTION GRADE SPOULE SHS 19% PLATES & NAILERS IN CONTACT WITH CONCRETE TO BE CCA 40 TREATED.
 - 2) BANGS & BATTEN SOLIDS TO BE IDENTIFIED BY MANUFACTURER'S MARKING TO BE DAMPSON WIDTH 1/2" BATTEN WIDTH 3/4"
 - 3) BORED DRILLING & BATTEN STRIPS TO BE FULL LENGTH WITH NO TRANSVERSE JOINTS.
 - 4) ALL NAILS TO BE GALVANIZED.
- FINISH NOTES:**
- 1) ALL BOARDS & BATTENS TO BE STAINED WITH ONE COAT OF STAIN.
 - 2) AFTER INSTALLATION, EXTERIOR SURF. TO RECEIVE ONE ADDITIONAL COAT OF STAIN.
 - 3) STAIN TO BE OLYMPIC OIL BASE SEMI-PERMANENT OXFORD BLEND # 715.

STATE OF VERMONT DEPARTMENT OF STATE BUILDINGS AGENCY OF ADMINISTRATION MONTPELIER, VERMONT		STATE OF VERMONT AGENCY OF TRANSPORTATION 24' X 48' STORAGE SHED BRANDON MAINTENANCE FACILITY	
BRANDON	SCALE AS NOTED	DWG. NO. A-8	VERMONT
DATE JUNE 1987	AS NOTED	REVISIONS:	
DRAWN BY B. McAVOY	APPROVED BY P. CHANDLER		
		16	23