

- COMMON FILL - SHALL CONTAIN NO STONES OR CONCRETE, OR OTHER LARGE DEBRIS. SHALL BE PLACED IN 12" LIFTS & COMPACTED TO 95% STANDARD PROCTOR.
- BR GRAVEL - SHALL BE 12" BANK RUN GRAVEL (VT AOT TABLE 704.04) PLACED IN 6" LIFTS, COMPACTED TO 95% STANDARD PROCTOR.
- CRUSHED GRAVEL - SHALL BE 6" CRUSHED GRAVEL SURFACE COURSE (VT AOT TABLE 704.05A FINE) COMPACTED TO 95% STANDARD PROCTOR.
- SAND - SHALL BE OF CLEAN MINERAL AGGREGATE (VT AOT TABLE 703.02A) AND SHALL BE APPROVED BY THE PROJECT ENGINEER PRIOR TO USE. SAND TO BE PLACED IN 6" LIFTS & COMPACTED TO 95% STANDARD PROCTOR.

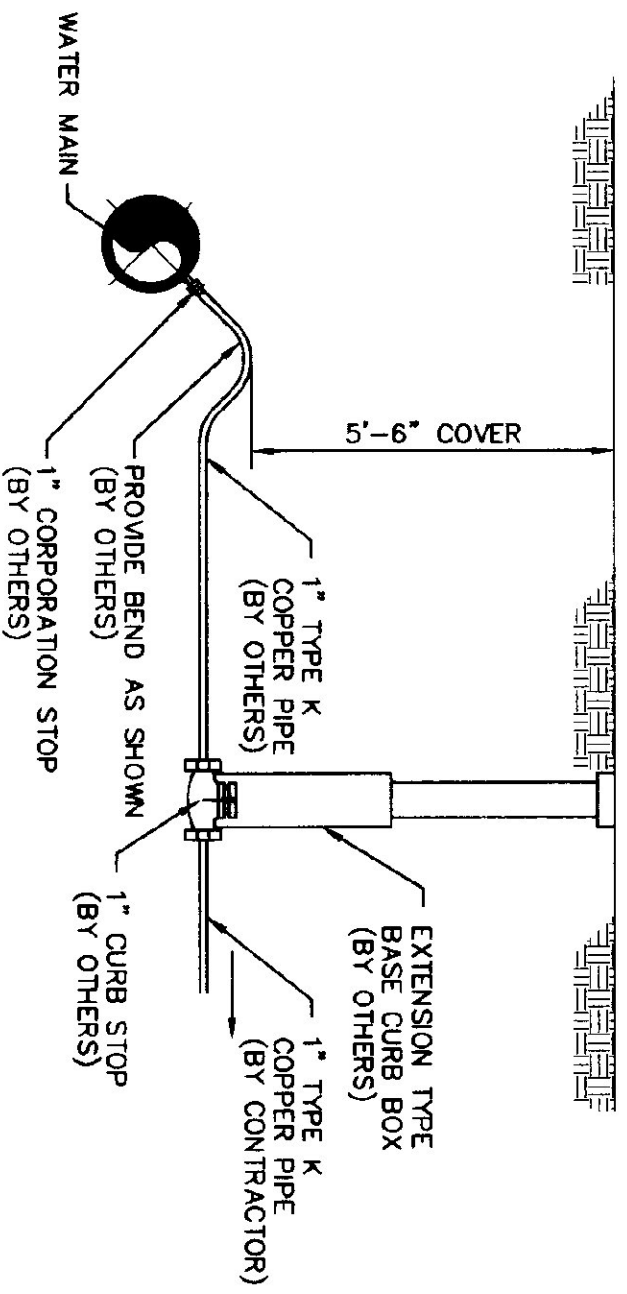
WATER PIPE TRENCH SECTION

N.T.S.

WATER SERVICE 1" K" COPPER LINE SHALL BE PRESSURE TESTED AND DISINFECTED AS APPROVED BY THE PROJECT ENGINEER.

NOTE:

MAGNETICALLY DETECTABLE MARKING TAPE SHALL BE PLACED OVER ALL WATER LINES. TAPE SHALL BE A MINIMUM OF 24" BELOW FINISHED SURFACE OR BELOW LOWEST GRAVEL COURSE, WHICHEVER IS GREATER.



WATER SERVICE CONNECTION

N.T.S.

NOTES:

- 1) CONTRACTOR SHALL COORDINATE WATER SERVICE INSTALLATION WITH MR. DOUG CUMMINGS, BRANDON FIRE DISTRICT (BFD), (802) 247-5311.
- 2) BFD SHALL TAP EXISTING WATER MAIN, PROVIDE COPROBATION, 1" COPPER STOP, AND CURB STOP WITH GATE BOX.
- 3) CONTRACTOR SHALL BE RESPONSIBLE FOR EXCAVATION AND BACKFILL FOR WORK DONE BY BFD. CONTRACTOR SHALL NOT EXCAVATE NEAR OR TO WATER MAIN WITHOUT A REPRESENTATIVE OF THE BFD ON-SITE.
- 4) CONTRACTOR SHALL BE RESPONSIBLE FOR \$278 TAPPING FEE (PAYABLE TO BFD).
- 5) CONTRACTOR SHALL CONSTRUCT WATER SERVICE FROM CURB STOP TO GARAGE.

LEAKAGE TESTING OF WATER LINES

ALL TYPES OF INSTALLED WATER LINES SHALL BE PRESSURE TESTED AND LEAKAGE TESTED IN ACCORDANCE WITH THE LATEST EDITION OF AWWA STANDARD C-600.

DISINFECTION OF WATER LINES

- A) BASIC DISINFECTION PROCEDURE CONSISTS OF:
- 1) PREVENTING CONTAMINATING MATERIALS FROM ENTERING THE WATER LINE DURING CONSTRUCTION OR REPAIR.
 - 2) REMOVING BY FLUSHING OR OTHER MEANS, THOSE MATERIALS THAT MAY HAVE ENTERED THE WATER LINE.
 - 3) CHLORINATING ANY RESIDUAL CONTAMINATION THAT MAY REMAIN, AND FLUSHING THE CHLORINATED WATER.
 - 4) DETERMINING THE BACTERIOLOGICAL QUALITY BY LABORATORY TEST AFTER DISINFECTION.
 - 5) COMPLY WITH ALL PERTINENT PROCEDURES AND REQUIREMENTS OF THE CURRENT EDITION OF AWWA STANDARD C651, FEDERAL, STATE AND LOCAL LAWS, REGULATIONS AND ORDINANCES.
- B) DISINFECTION PROCEDURE:
- 1) CLOSE THE SERVICE VALVES AND FILL THE WATER LINE WITH CHLORINATED WATER.
 - 2) LEAVE THE CHLORINATED WATER IN THE WATER LINE FOR AT LEAST 24 HOURS.
 - 3) AT THE END OF THIS PERIOD, THE CHLORINATED WATER SHALL BE SAMPLED AND HAVE A FREE CHLORINE RESIDUAL OF AT LEAST 10 mg/L. IF NOT, THE PROCEDURE SHALL BE REPEATED UNTIL THE RESIDUAL REQUIREMENT IS MET.
 - 4) HEAVILY CHLORINATED WATER SHALL BE NEUTRALIZED PRIOR TO RELEASE IN ACCORDANCE WITH THE LATEST EDITION OF AWWA STANDARD C651. NEUTRALIZATION OF CHLORINATED WATER SHALL BE COORDINATED WITH LOCAL AND STATE AGENCIES TO DETERMINE SPECIAL PROVISIONS FOR THE DISPOSAL OF HEAVILY CHLORINATED WATER.
 - 5) THOROUGHLY FLUSH THE WATER LINE ASSURING NO OFFENSIVE ODOR EXISTS DUE TO CHLORINE REACTIONS OR EXCESS CHLORINE RESIDUAL.
 - 6) FLUSHING VELOCITY SHALL NOT BE LESS THAN 2.5 FT/SEC.
 - 7) REPEAT DISINFECTION PROCESS ON LINES THAT BECOME OR MAY HAVE BECOME RECONTAMINATED AND ON ALL LINES IN WHICH COLIFORM BACTERIA WERE FOUND.
 - 8) THE TABLET METHOD IS NOT ACCEPTABLE.
 - 9) RESULTS OF ALL DISINFECTION TESTS SHALL BE PROVIDED TO PROJECT ENGINEER.

WATER DETAILS
FOR
VERMONT AOT MAINTENANCE GARAGE
IN
BRANDON, VERMONT

BRUNO ASSOCIATES INC. P.C.
ENGINEERS, PLANNERS, SURVEYORS
PO BOX 367, THE MILL BUILDING
WOODSTOCK, VERMONT 05091

PHONE: (802) 457-3560 FAX: (802) 457-4853

FOR CONSTRUCTION

SURVEYED: N/A
DESIGNER: ESC, DAN
DRAWN: WFD, ESC
CHECKED: MJB
DATE: 11/7/96
VERMONT AOT
WATER DETAILS
C5
6 OF 23

© 1997
BRUNO ASSOCIATES INC., P.C.
TEL: 802-457-3560
FAX: 802-457-4853
PROJECT: 97041
DRAWN: WFD

NO	REVISIONS	DATE
1.	PERMIT PLANS MFD	2/28/97
2.	CONSTRUCTION PLANS MFD	7/2/97
3.	CONSTRUCTION PLANS II MFD	7/9/97

SCALE: AS NOTED