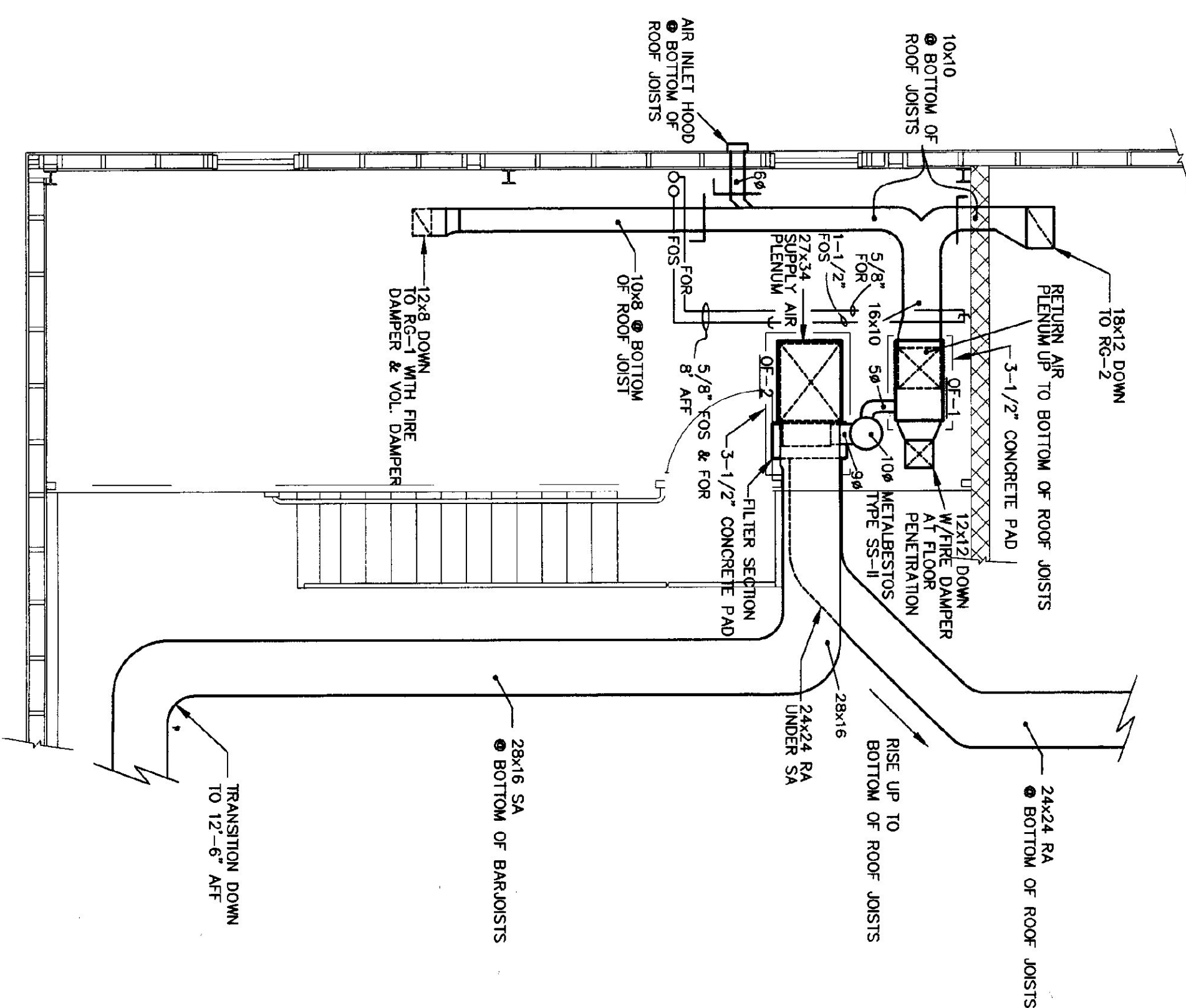
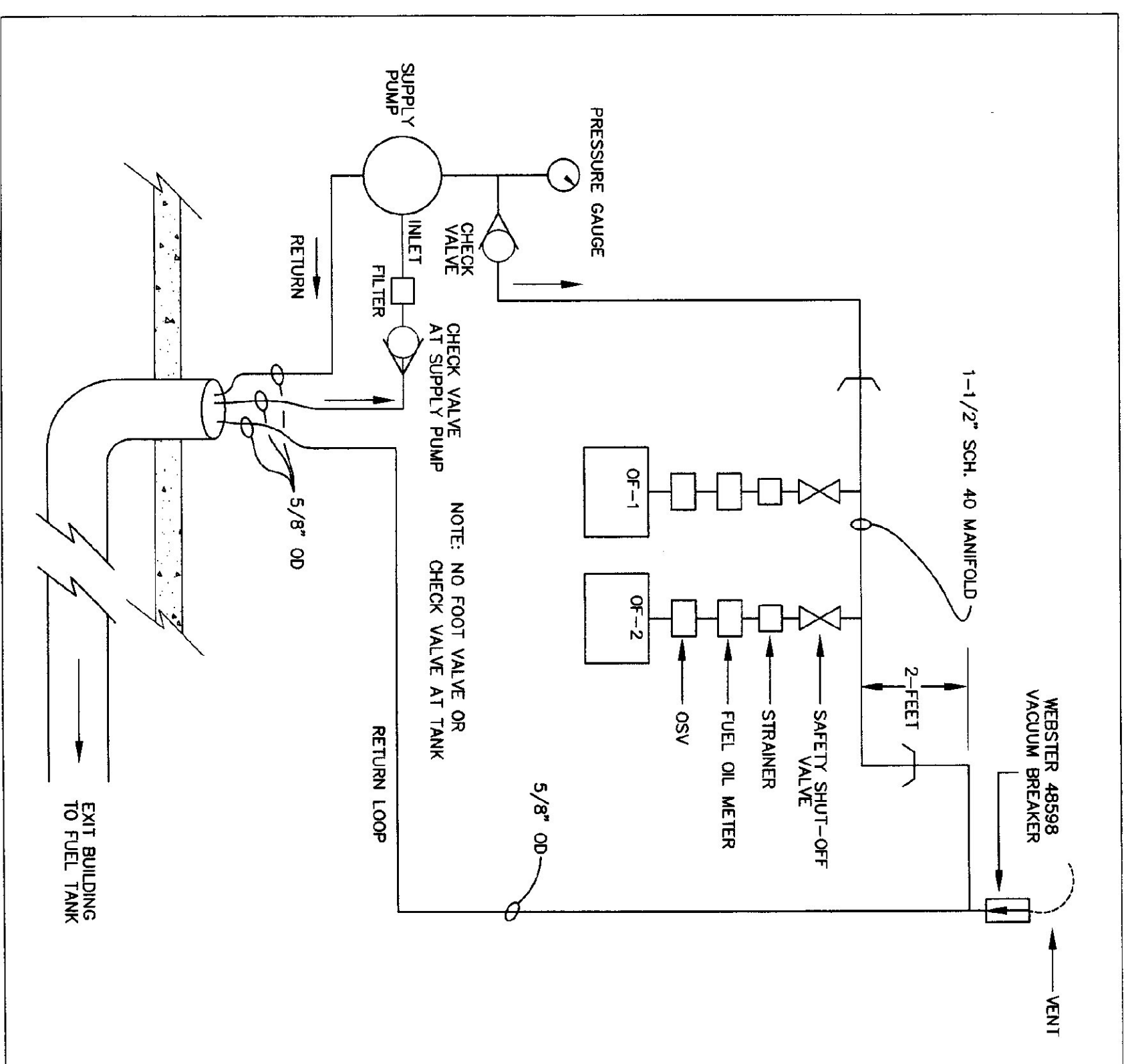


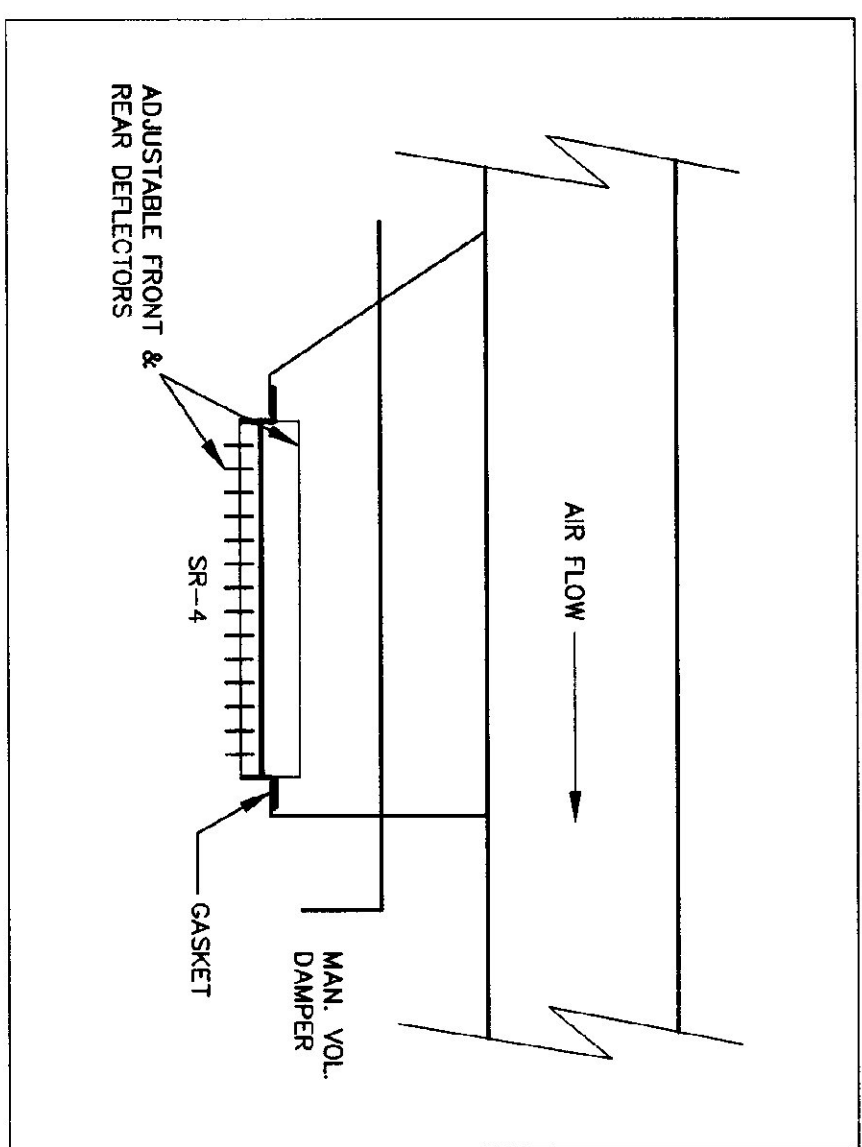
MAIN FLOOR PLAN - DUCTWORK
SCALE: 1/8" = 1'-0"



MEZZANINE DUCTWORK PLAN
SCALE: 1/4" = 1'-0"



FUEL OIL TRANSFER PIPING DIAGRAM
NO SCALE



TYPICAL SUPPLY REGISTER ABOVE
OVERHEAD DOOR OPENINGS
NO SCALE

MECHANICAL LEGEND	
(T)	THERMOSTAT
▲	ABOVE FINISHED FLOOR
▲	ABOVE FINISHED GRADE
▲	MECHANICAL CONTRACTOR
▲	ELECTRICAL CONTRACTOR
▲	DOMESTIC HOT WATER TANK
▲	GENERAL CONTRACTOR
▲	TYPICAL
▲	DOWN
▲	OIL FIRED FURNACE
▲	SUPPLY REGISTER
▲	RETURN GRILLE
▲	FILTER GRILLE
▲	FUEL OIL RETURN
▲	FUEL OIL SUPPLY
▲	FIRE DAMPER
▲	MANUAL VOLUME DAMPER

MECHANICAL EQUIPMENT SCHEDULE	
OF-1	OIL-FIRED FURNACE, CARRIER SQDMA-105-12, 50PH INP/UT, 850 CFM ● 2 ESP, 1/3 HP, 12.2 AMPS @ 120V, MCA 19 A DOWNFLOW CONVERSION GUARD KIT & DOWNFLOW SUBBASE KIT.
OF-2	OIL-FIRED FURNACE, JACKSON CHURCH QI-350HB-28, 250PH INP/UT, WITH FILTER SECTION ADAPTER, 3200 CFM ● 5 SP, 1.5 HP, 230V, SINGLE-PHASE
OTF	OIL TRANSFER PUMP, WESTER SPN-15-1 1/6 HP, 115 VOLTS, 35 GPH SECTION, 22 GPH FLOW

GENERAL NOTES:

- A. REFER TO THE ARCHITECTURAL REFLECTED CEILING PLANS FOR FINAL LOCATIONS OF LIGHTS, DIFFUSERS AND SPRINKLERS.
- B. ALL RUN OUTS TO THE SUPPLY/RETURN/EXHAUST DIFFUSERS TO BE THE SAME SIZE AS THE NECK SIZE AS INDICATED ON THE DRAWINGS AND/OR SCHEDULES.

GRILLES, REGISTERS, DIFFUSERS SCHEDULE	
ITEM	DESCRIPTION
FG-1	24"x24" FILTER GRILLE, METALAIR CO5FB
SR-1	SUPPLY REGISTER, 10"x4", HART & COOLEY #821
SR-2	SUPPLY REGISTER, 12"x6", HART & COOLEY #821
SR-3	SUPPLY REGISTER, 12"x12", HART & COOLEY #5040B
SR-4	SUPPLY REGISTER, 16"x8", METALAIR #H4254 DOUBLE DEFLECTION
RG-1	RETURN GRILLE, 12"x8", METALAIR RH
RG-2	RETURN GRILLE, 18"x12", METALAIR RH
L-1	LOUVER/MOTOR OPERATED DAMPER, 48"x48", GREENHECK MODEL EGO-601, EXTRUDED ALUMINUM WITH BRD SCREEN, FLANGED EXTERIOR SILL, BAKED ENAMEL COLOR AS SELECTED BY ARCHITECT, BELIMO DAMPER MOTOR, 120 VAC

EXHAUST FAN SCHEDULE							
TAG	UNIT	TYPE	FAN MOTOR	MOTOR STARTER	DESIGN BASIS		
	CFM		ESP	CUTLER	MANUFACTURER		
			MOTOR	HAMMER	MODEL		
			HP	BY EC	No.		
			MAX	BY EC			
			VOLTAGE	BY EC			
			RPM	BY EC			
EF-1	80	WALL	0.3	1/20	1288	PANASONIC	FL-G8W01
EF-2	3561	PROPELLER	0.2	1/4	860	GREENHECK	SS-22-615-04**
EF-3	160	RESIDENTIAL KITCHEN HOOD	0.2	1/8	120/1/60	NOTONE	RL6100

** ACCESSORIES TO INCLUDE: WALL HOUSING WITH GUARD, MOTORIZED SUPPLY DAMPER, WEATHERHOOD.

AGENCY of TRANSPORTATION:
FIVE BAY MAINTENANCE FACILITIES
LONDONDERRY, VERMONT

SCALE
AS NOTED
DATE
MAY. 14, 2001
DRAWN BY
ASG

REVISION
DATE
DRAWING NUMBER
MECHANICAL
FLOOR PLAN, SCHEDULES, & DETAILS

M1



EH Danson Assoc.
Architects
827 Westlers Ave. Ste. 104, P.O. Box 6206
St. Johnsbury, Vermont 05820
Tel (802) 748-8299 Fax (802) 748-9068

Pearson & Associates
MECHANICAL & ELECTRICAL ENGINEERS
P.O. BOX 610; STOWE, VERMONT 05672
TEL.(802) 253-9607 FAX.(802) 253-9290