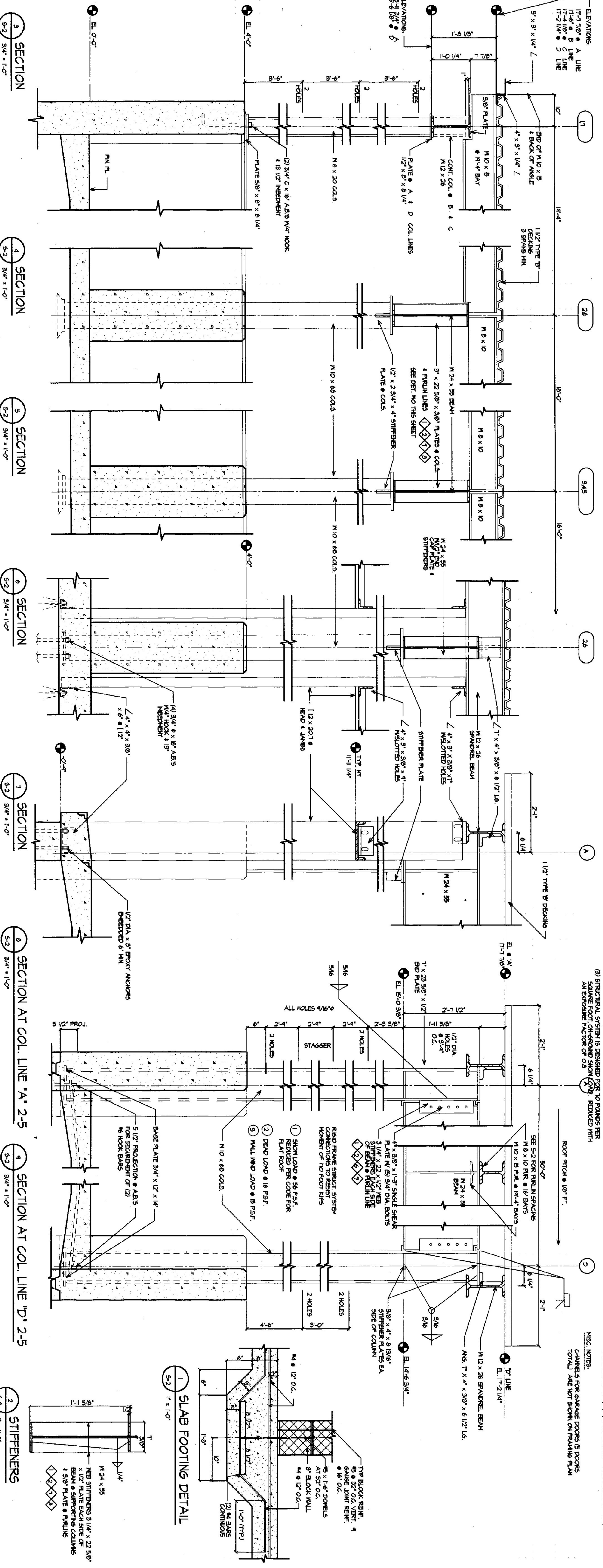


ROOF FRAMING PLAN
1/8" = 1'-0"

FLOOR SLAB PLAN
1/8" = 1'-0"



SECTION 1
3/4" = 1'-0"

SECTION 2
3/4" = 1'-0"

SECTION 3
3/4" = 1'-0"

SECTION 4
3/4" = 1'-0"

SECTION 5
3/4" = 1'-0"

SECTION 6
3/4" = 1'-0"

SECTION 7
3/4" = 1'-0"

SECTION 8
3/4" = 1'-0"

SECTION 9
1" = 1'-0"

STIFFENERS
1" = 1'-0"

S-2

NOTES:
(1) SLAB CONSTRUCTION JOINT / EXPANSION JOINT PLATING SQUARE FOOT OVERLAP SHALL BE 12" MIN. (SEE DETAIL 2) FOR THE SIDE OF THE JOINT.
(2) SLABS 2' EXTERIOR PERIMETER & OVERHEAD DOORS EXCEED 2' EXTERIOR FACE OF FOUNDATION.
(3) STRUCTURAL SYSTEM IS DESIGNED FOR TO FOUND PER SQUARE FOOT OVERLAP SHALL BE 12" MIN. (SEE DETAIL 2) FOR THE SIDE OF THE JOINT.
(4) SEE DETAIL 2 FOR THE SIDE OF THE JOINT.

LOADING NOTES:
(1) SNOW LOAD = 50 / 57 (SEE NOTE 3)
(2) DEAD LOAD = 15 / 57 FOR ROOF
(3) DEAD LOAD = 15 / 57 / 35' WALLS
(4) WINDING: 120' / 57' FLOOR

BASE PLATE NOTES:
● COL. LINES 11, 12 NOT AT BASE PLATES 4" x 4" x 3/4"
● COL. LINES 2, 3, 4, 5 & 6 NOT AT BASE PLATES 8" x 8" x 1/2"

DATE	REVISION	AGENCY OF TRANSPORTATION: FIVE BAY MAINTENANCE FACILITIES LONDONDERRY, VERMONT		E H Danson Assoc. Architects 357 Western Ave. Ste. 104, P.O. Box 4116 St. Johnsbury, Vermont 05819 Tel (802) 748-6299 Fax (802) 748-1965
DRAWING NUMBER	SCALE AS NOTED			
DRAWING NAME ROOF FRAMING, STEEL SECTIONS, AND CONCRETE DETAILS		DATE MAY 14, 2001		
		DRAWN BY KRG		