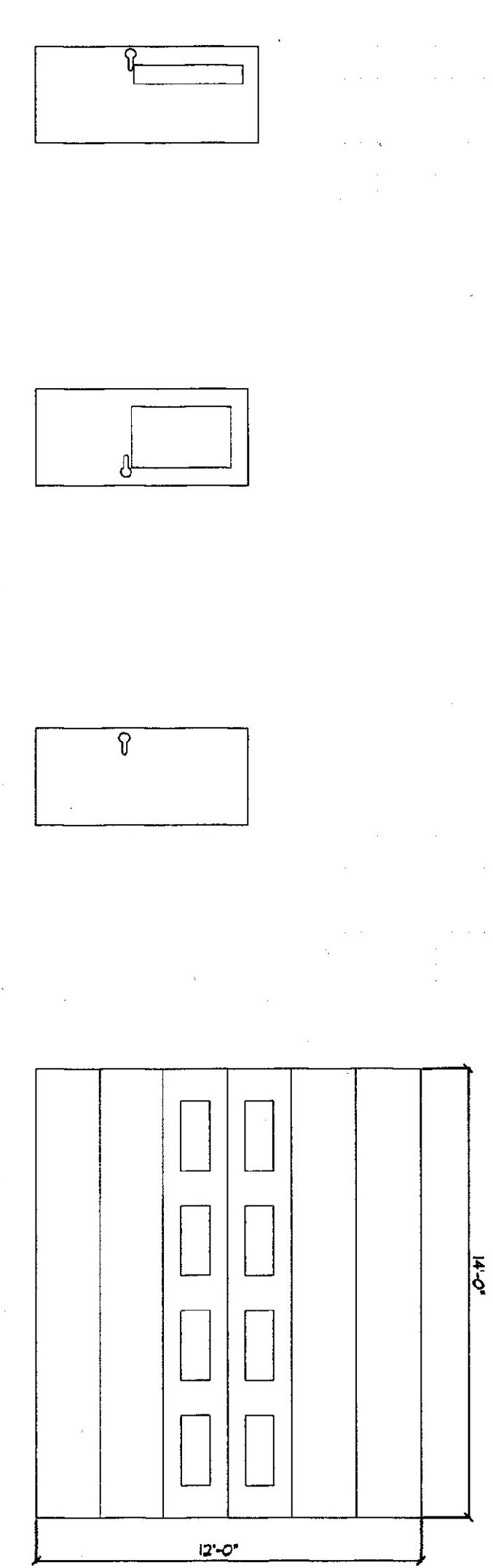
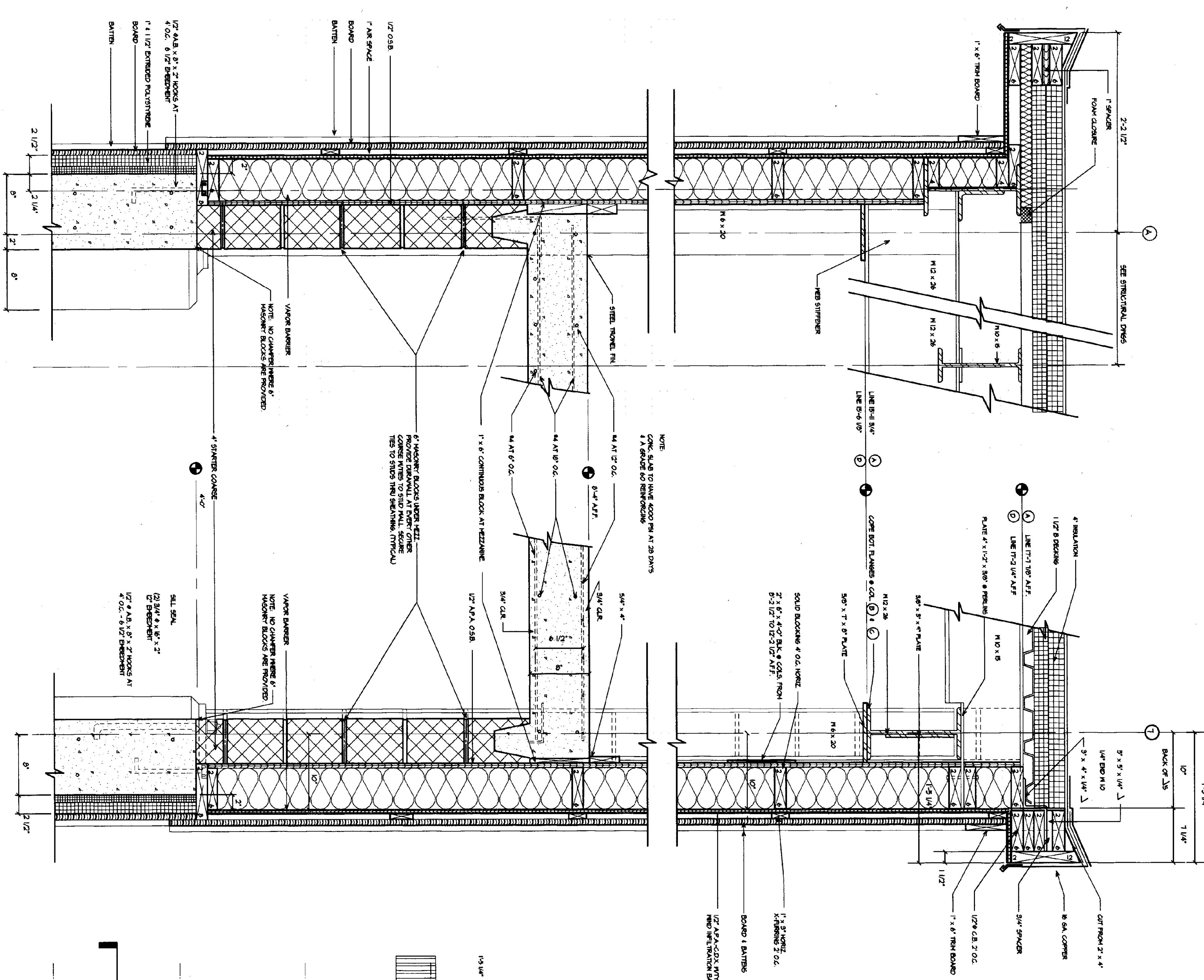
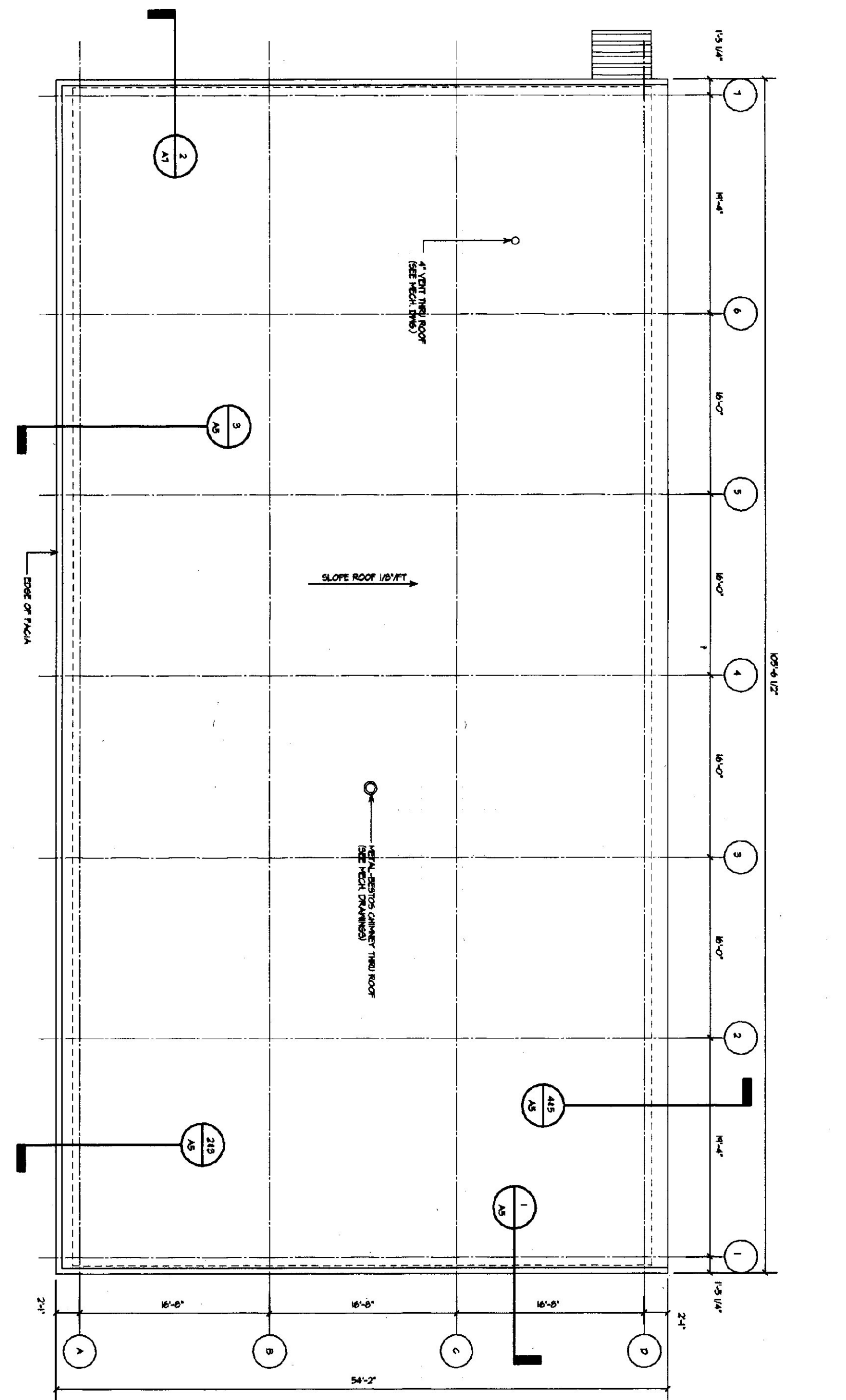


DOOR SCHEDULE									
NO.	QTY	SIZE	TYPE	FRAME MATERIAL	DOOR MATERIAL	FINISH	GLASSING REQUIRED	GLASSING	REMARKS
D1-D3	3	3'-0" x 7'-0"	I	C	INSULATED METAL	C	6" x 6" WIREGLASS	4 1/2" x 4 1/2" BALL BEARING REMOVABLE PINS	34" x 12" FLATE STEEL
D4	1	3'-0" x 6'-3"	II	C	HOLLOW METAL	B	30" x 30" SAFETY	4 1/2" x 4 1/2" BALL BEARING	34" x 12" VINTL
D5	1	3'-0" x 6'-3"	III	B	HOLLOW METAL	B	NONE	4 1/2" x 4 1/2" BALL BEARING	NONE
D6	1	3'-0" x 6'-3"	III	B	HOLLOW METAL	B	NONE	4 1/2" x 4 1/2" BALL BEARING	NONE
D7	1	3'-0" x 6'-3"	III	B	HOLLOW METAL	B	NONE	4 1/2" x 4 1/2" BALL BEARING	NONE
D8	1	14'-0" x 14'-0"	IV	C	INSULATED STEEL	C	NONE	4 1/2" x 4 1/2" BALL BEARING	34" x 12" NONE
D9-D12	4	14'-0" x 14'-0"	IV	C	INSULATED STEEL	C	ACRYLIC	ACRYLIC	ELECTRIC
									OVERHEAD DOOR SERIES 591 THERMADORE IN ACRYLIC WINDOWS THERMADORE IN ACRYLIC WINDOWS



WINDOW SCHEDULE					
NO.	QTY	TYPE	FRAME MATERIAL	ROUGH OPENING	REMARKS
1	11	ANNING	METAL	3'-4 1/2" x 7'-0 1/2" H.	ACORN BLOCK COMPONENTS 4500 SERIES-5420 C



3 WALL SECTION AT COLUMN LINE "A" MEZZANINE
 2 END WALL SECTION AT MEZZANINE
 1 ROOF PLAN
 A7 1/2" = 1'-0"

	DATE: _____ REVISION: _____ SCALE: AS NOTED DATE: MAY 14, 2001 DRAWN BY: KRG	AGENCY OF TRANSPORTATION: FIVE BAY MAINTENANCE FACILITIES LONDONDERRY, VERMONT		E H Danson Assoc. Architects 357 Western Ave. Ste. 104, P.O. Box 4115 St. Johnsbury, Vermont 05819 Tel (802) 748-5239 Fax (802) 748-1085
	DRAWING NAME: DETAILS, ROOF PLAN AND SCHEDULES			