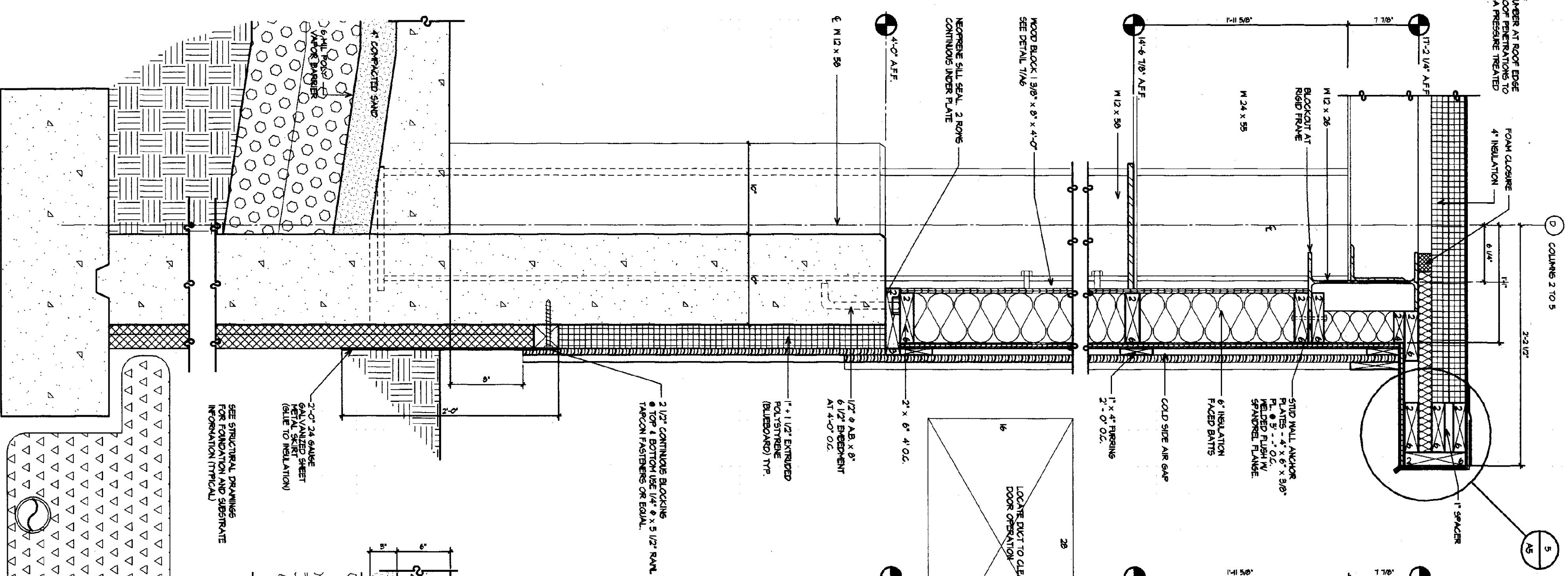
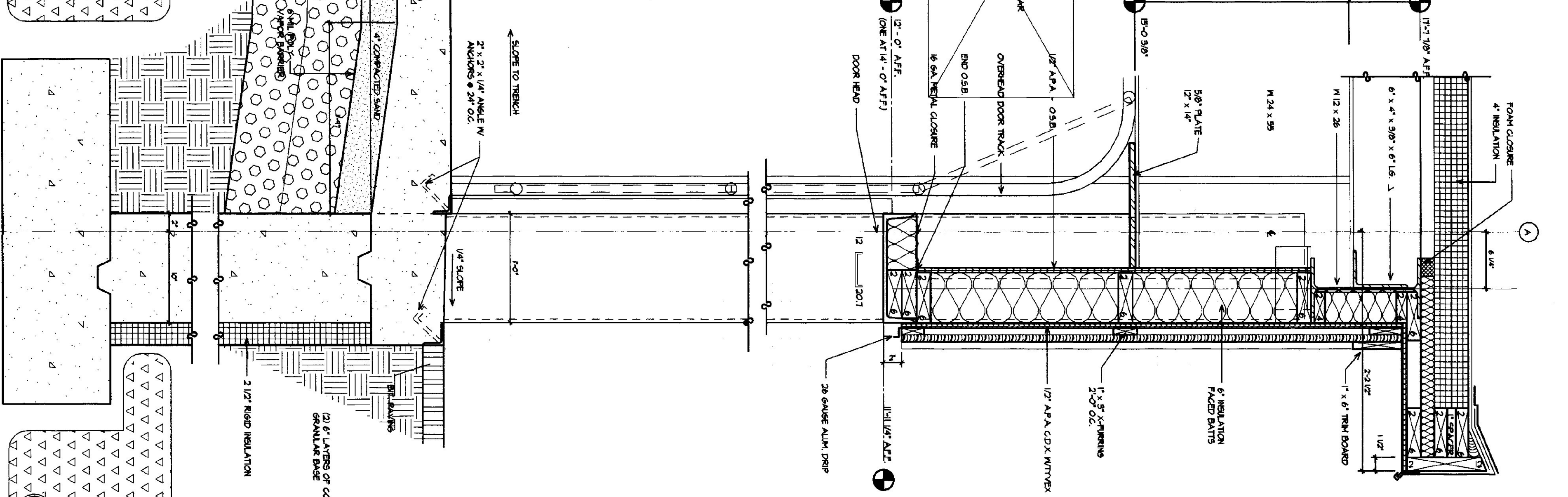


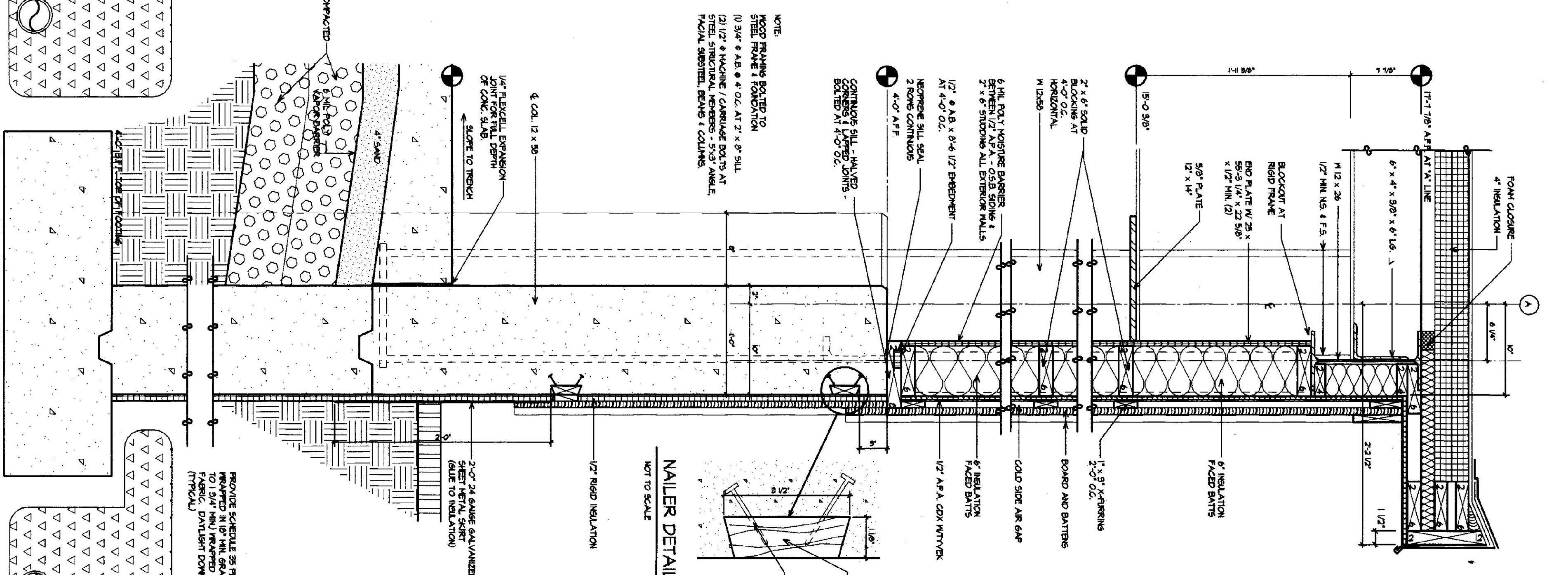
NOTE:
ALL LIVERS AT ROOF EDGE
AND ROOF PENETRATIONS TO
BE CCA PRESURE TREATED



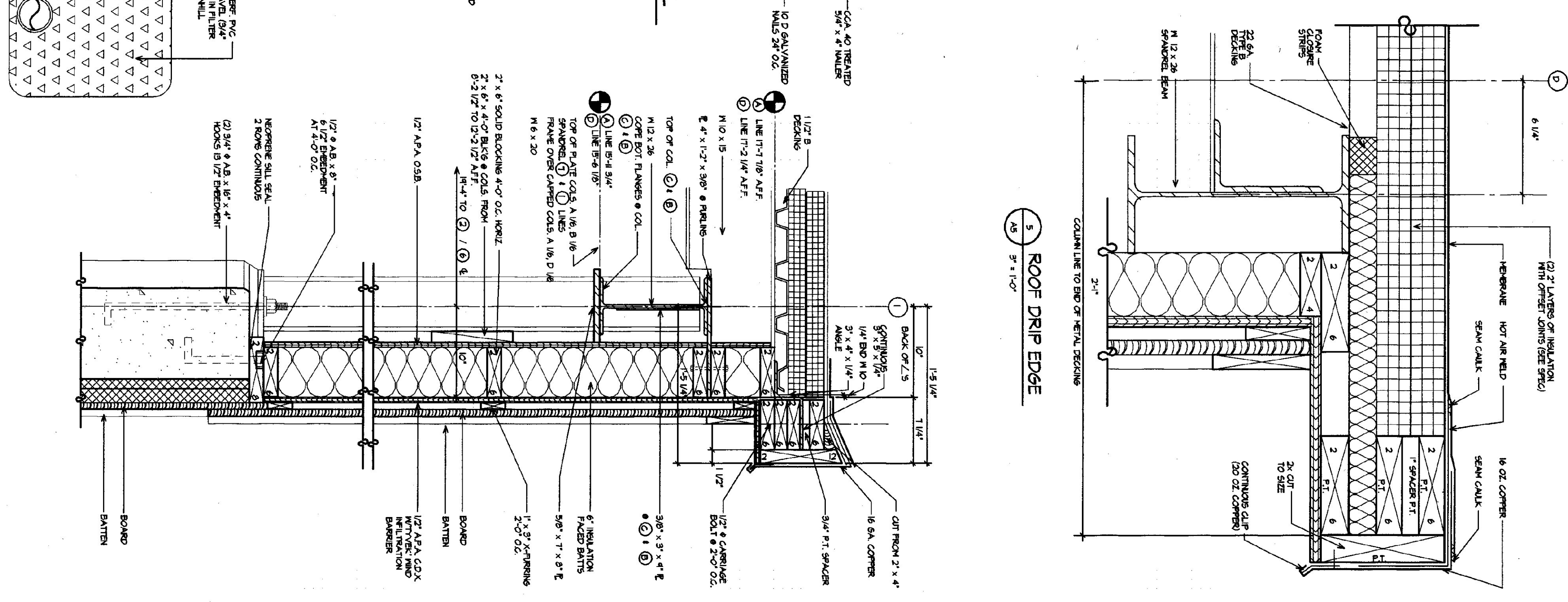
4 WALL SECTION AT COLUMN LINE 'D'



3 WALL SECTION AT TYPICAL OVERHEAD DOOR



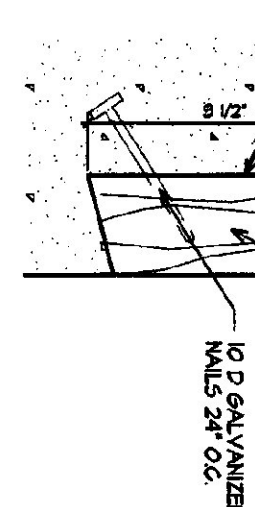
2 WALL SECTION AT COLUMN LINE 'A' PIERS



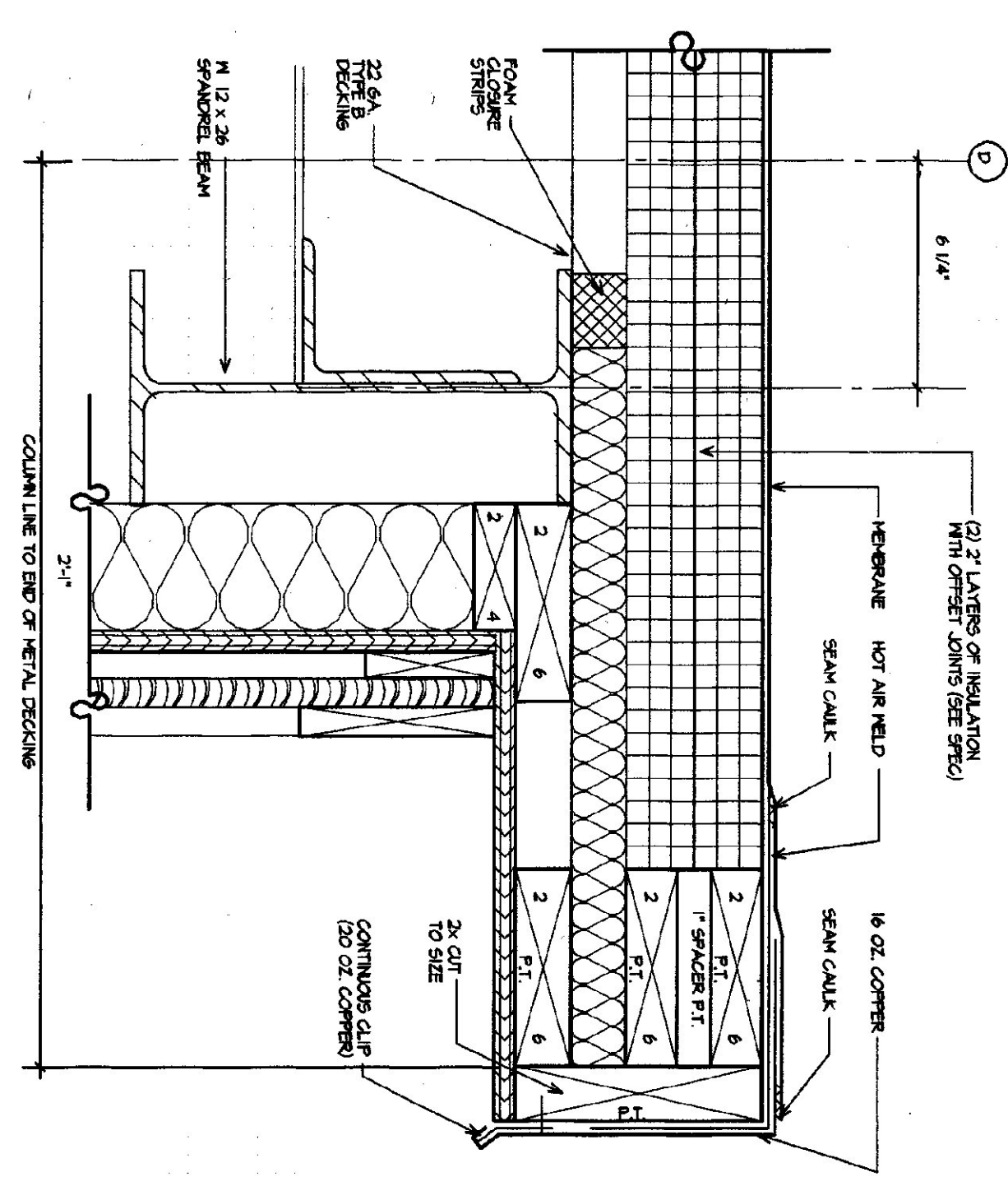
1 END WALL SECTION AT COL. LINE 'I'


NOTE:
WOOD FRAMING BOLTED TO
STEEL FRAME FOUNDATION
(1) 3/4\"/>

NAILER DETAIL
NOT TO SCALE



ROOF DRIP EDGE
3\"/>



AS	DATE	REVISION	AGENCY of TRANSPORTATION: FIVE BAY MAINTENANCE FACILITIES LONDONDERRY, VERMONT		E H Danson Assoc. Architects 367 Western Ave. Ste. 104, P.O. Box 4116 St. Johnsbury, Vermont 05819 Tel (802) 748-6239 Fax (802) 748-1086
	SCALE	AS NOTED			
	DATE	MAY 14, 2001			
	DRAWN BY	KRG/ADFW			