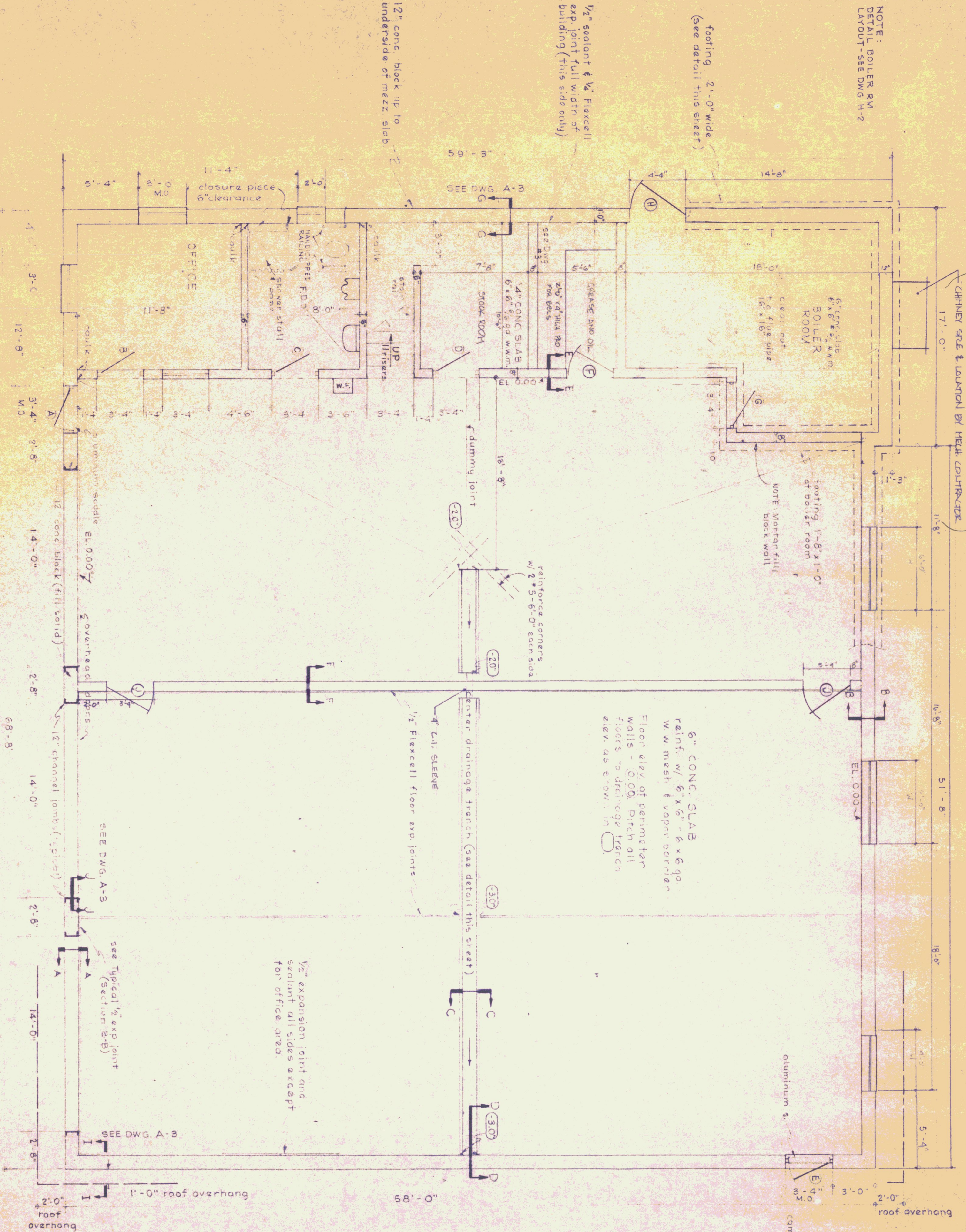


NOTE: BOILER RM LAYOUT - SEE DWG H-2

footing 2'-0" wide (see detail this sheet)

1/2" sealant & 1/4" Flexcell exp joint full width of building (this side only)

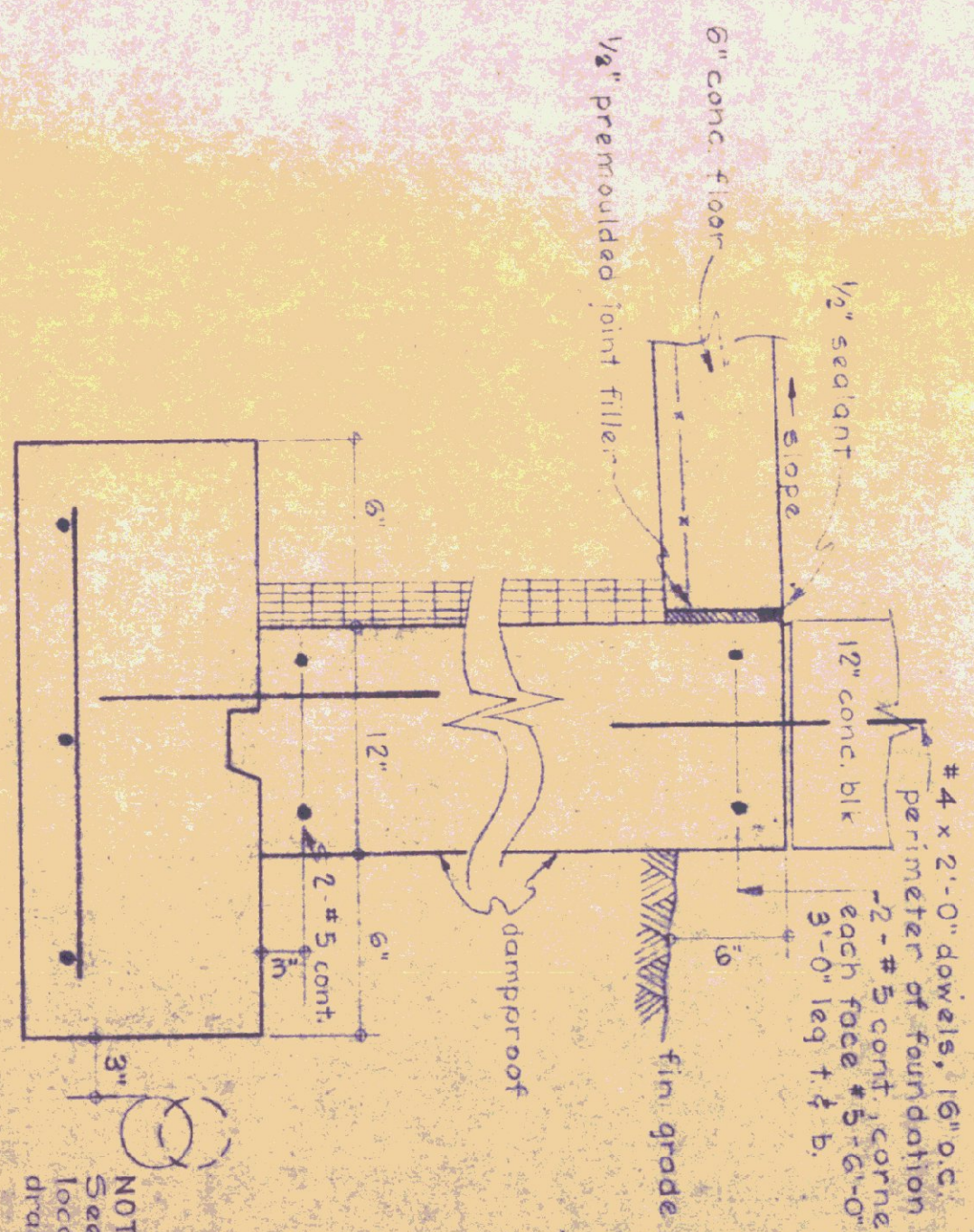


PLAN SCALE: 1/4" = 1'-0"

SECTIONS SCALE: 1/2" = 1'-0"

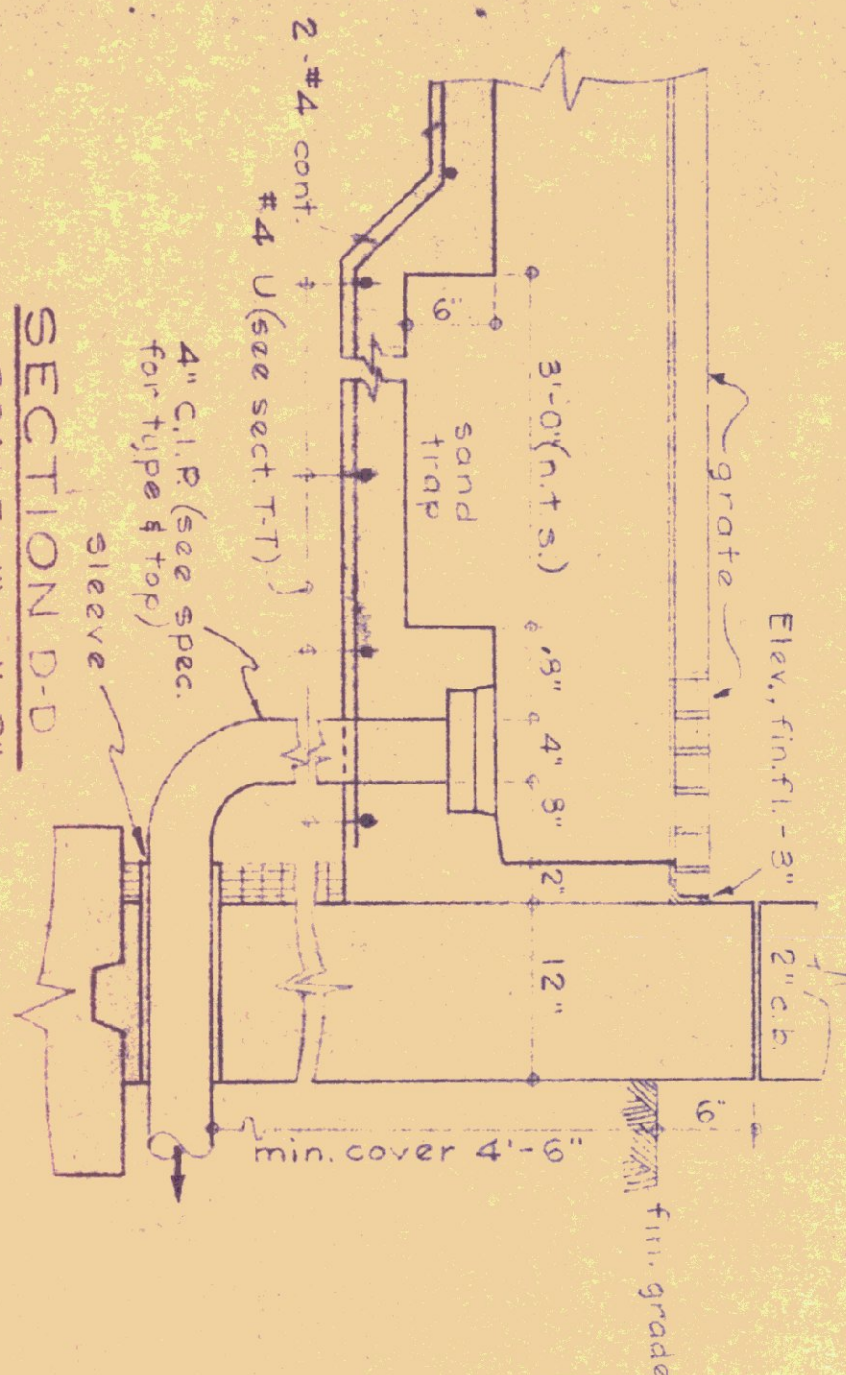
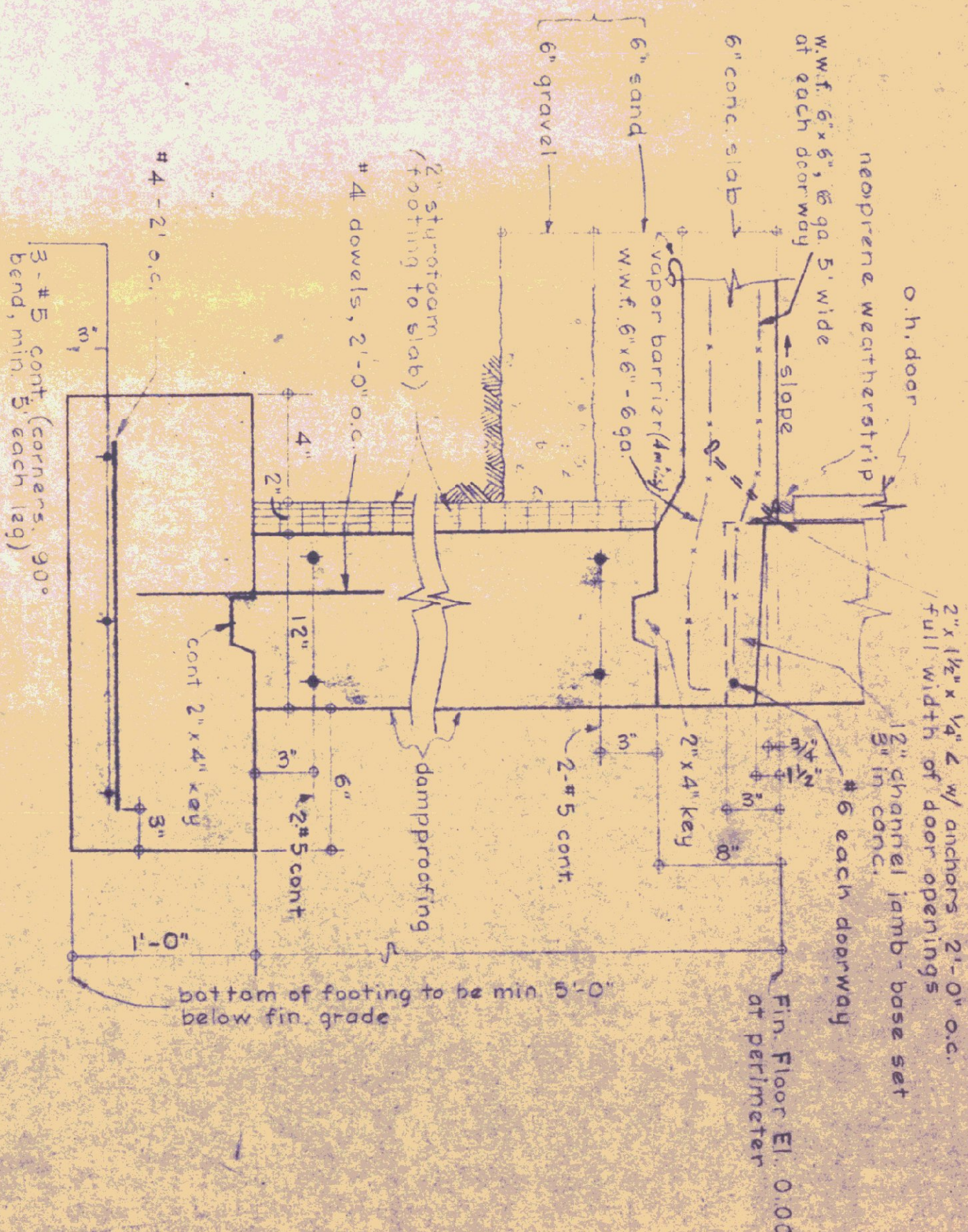
- GENERAL NOTES:**
1. All concrete shall be 3000 PSI at 28 days - max slump of 4"
 2. All exposed concrete walls shall be rubbed
 3. Construction joints for walls to have 1/2" V-joint in exposed face.
 4. All concrete to be covered with Sisalcraft & edges topped.
 5. Expansion joints to have tooled edges.

SECTION B-B TYPICAL FOUNDATION FOR ALL SIDES OF BLDG EXCEPT AT DOORS (SEE ABOVE FOR OTHER INFORMATION)

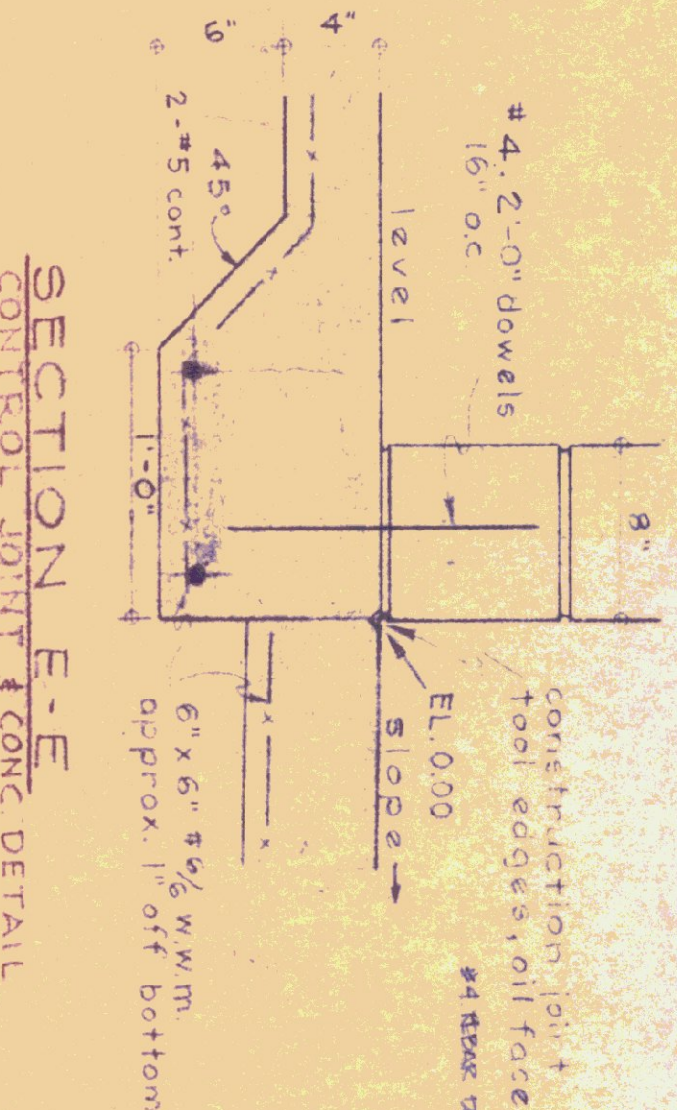


NOTE: See site plan for location of perimeter drains and outfall.

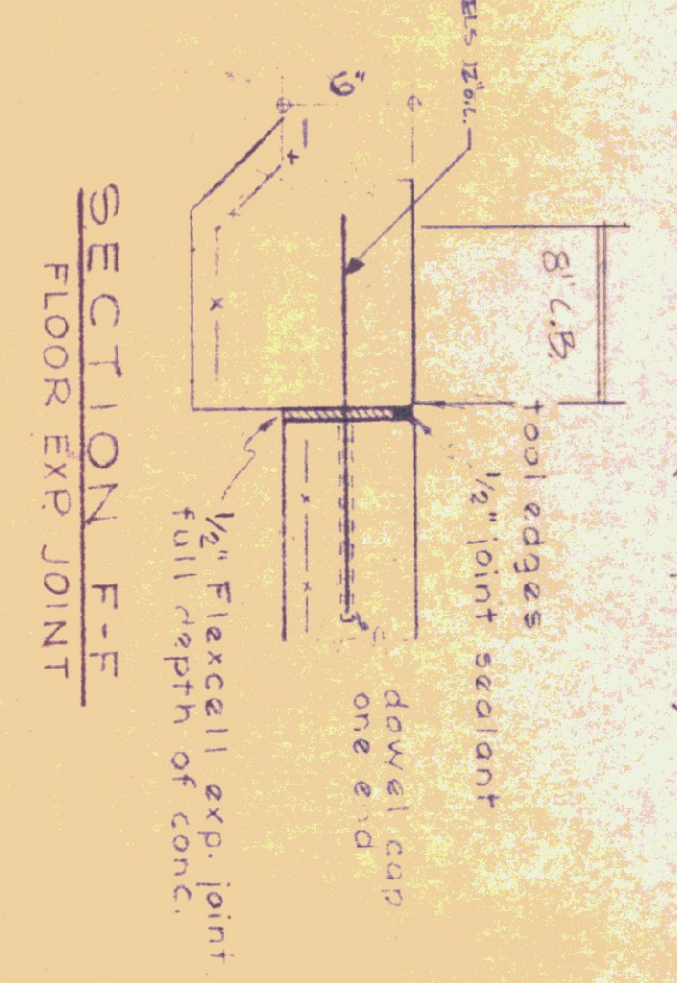
SECTION A-A TYPICAL AT OVERHEAD DOORS



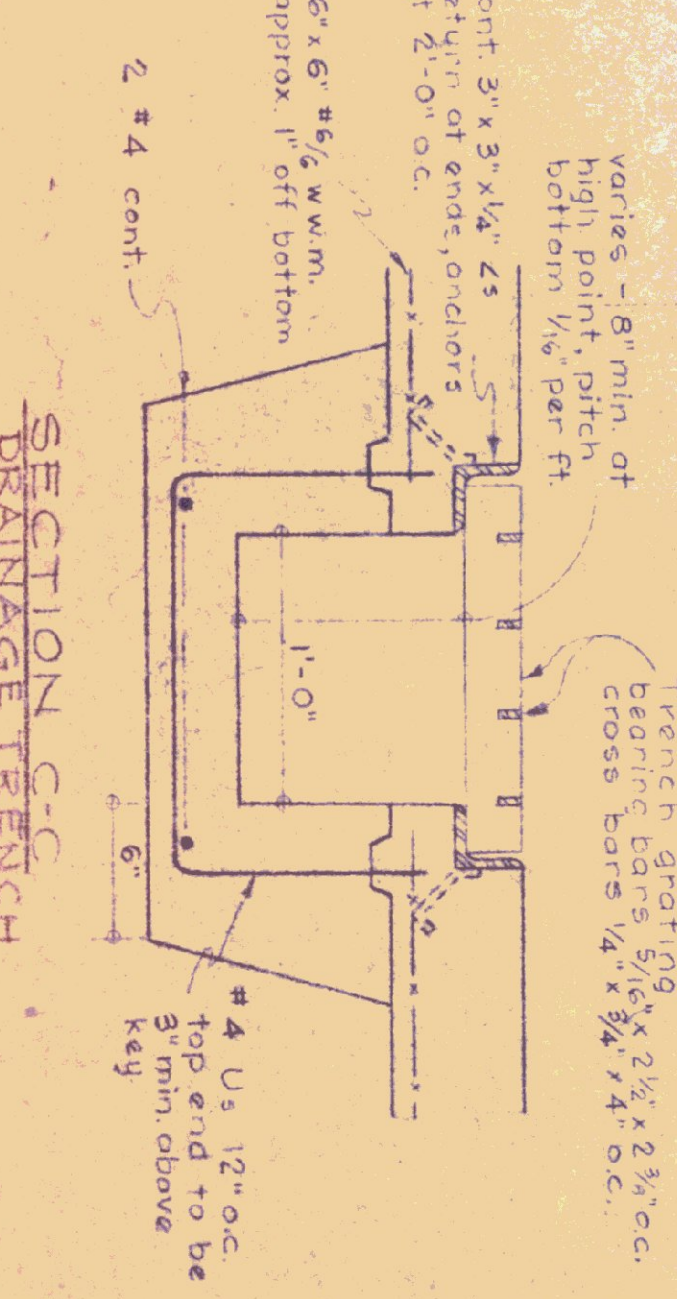
SECTION D-D SCALE: 1/2" = 1'-0"



SECTION E-E CONTROL JOINT & CONC DETAIL



SECTION F-F FLOOR EXP JOINT



SECTION G-G DRAINAGE TRENCH

INITIALS	DATE	REVISIONS
RD	6/27/74	WINDUWS - V&V

STATE OF VERMONT
DIVISION OF STATE BUILDINGS
AGENCY OF ADMINISTRATION
MONTPELIER, VERMONT

STANDARD
3 BAY HIGHWAY GARAGE BUILDING
FLOOR PLAN & FOUNDATION DETAILS

DESIGNED BY: T. U. S.
DATE: AUG. 4 '75
DRAWN BY: S. H. MILLER
APPROVED BY: S. H. MILLER

DWG. NO. A-1
SCALE: 1/4" = 1'-0"