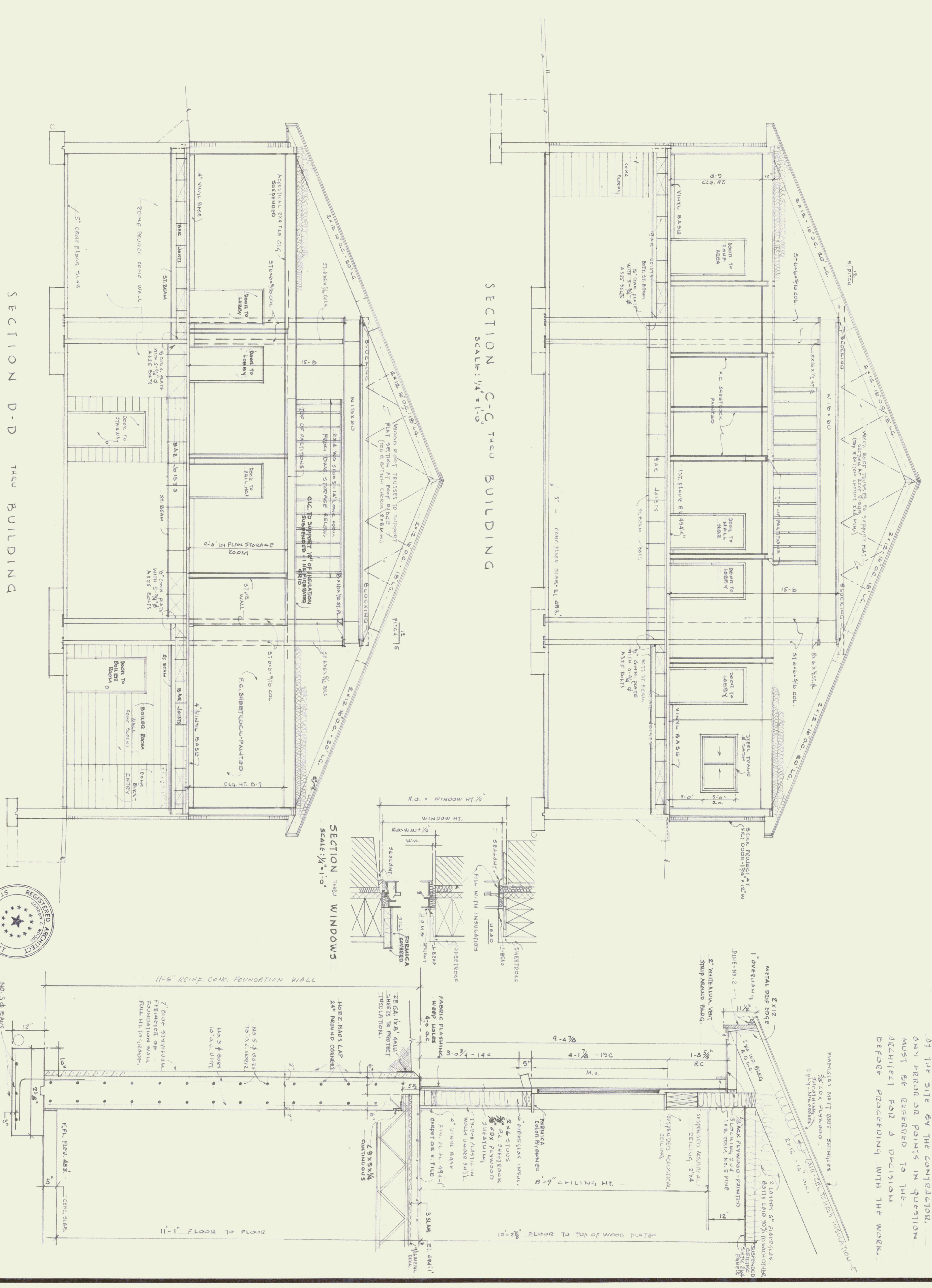


NOTES:  
 ALL DIMENSIONS TO BE VERIFIED  
 OF THE SITE BY THE CONTRACTOR.  
 ANY ERROR OR POINTS IN QUESTION  
 MUST BE REFERRED TO THE  
 ARCHITECT FOR A DECISION  
 BEFORE PROCEEDING WITH THE WORK.



AGENCY OF TRANSPORTATION — NEW OFFICE  
 STATE OF VERMONT DEPT. OF STATE BUILDINGS  
 DUMMERSTON VERMONT  
 GORDON G. WOODS ASSOC. ARCHITECTS, BURLINGTON, VERMONT

REVISIONS	BY
3-1-85	
LABOR INDUSTRY BLD	
LETTER 8-28-85	
10-25-85	
2-18-86	

NO. 54 PLANS	DATE	BY
NO. 55	3/1/85	GDW
NO. 56	3/1/85	GDW
NO. 57	3/1/85	GDW
NO. 58	3/1/85	GDW
NO. 59	3/1/85	GDW
NO. 60	3/1/85	GDW
NO. 61	3/1/85	GDW
NO. 62	3/1/85	GDW
NO. 63	3/1/85	GDW
NO. 64	3/1/85	GDW
NO. 65	3/1/85	GDW
NO. 66	3/1/85	GDW
NO. 67	3/1/85	GDW
NO. 68	3/1/85	GDW
NO. 69	3/1/85	GDW
NO. 70	3/1/85	GDW
NO. 71	3/1/85	GDW
NO. 72	3/1/85	GDW
NO. 73	3/1/85	GDW
NO. 74	3/1/85	GDW
NO. 75	3/1/85	GDW
NO. 76	3/1/85	GDW
NO. 77	3/1/85	GDW
NO. 78	3/1/85	GDW
NO. 79	3/1/85	GDW
NO. 80	3/1/85	GDW
NO. 81	3/1/85	GDW
NO. 82	3/1/85	GDW
NO. 83	3/1/85	GDW
NO. 84	3/1/85	GDW
NO. 85	3/1/85	GDW
NO. 86	3/1/85	GDW
NO. 87	3/1/85	GDW
NO. 88	3/1/85	GDW
NO. 89	3/1/85	GDW
NO. 90	3/1/85	GDW
NO. 91	3/1/85	GDW
NO. 92	3/1/85	GDW
NO. 93	3/1/85	GDW
NO. 94	3/1/85	GDW
NO. 95	3/1/85	GDW
NO. 96	3/1/85	GDW
NO. 97	3/1/85	GDW
NO. 98	3/1/85	GDW
NO. 99	3/1/85	GDW
NO. 100	3/1/85	GDW