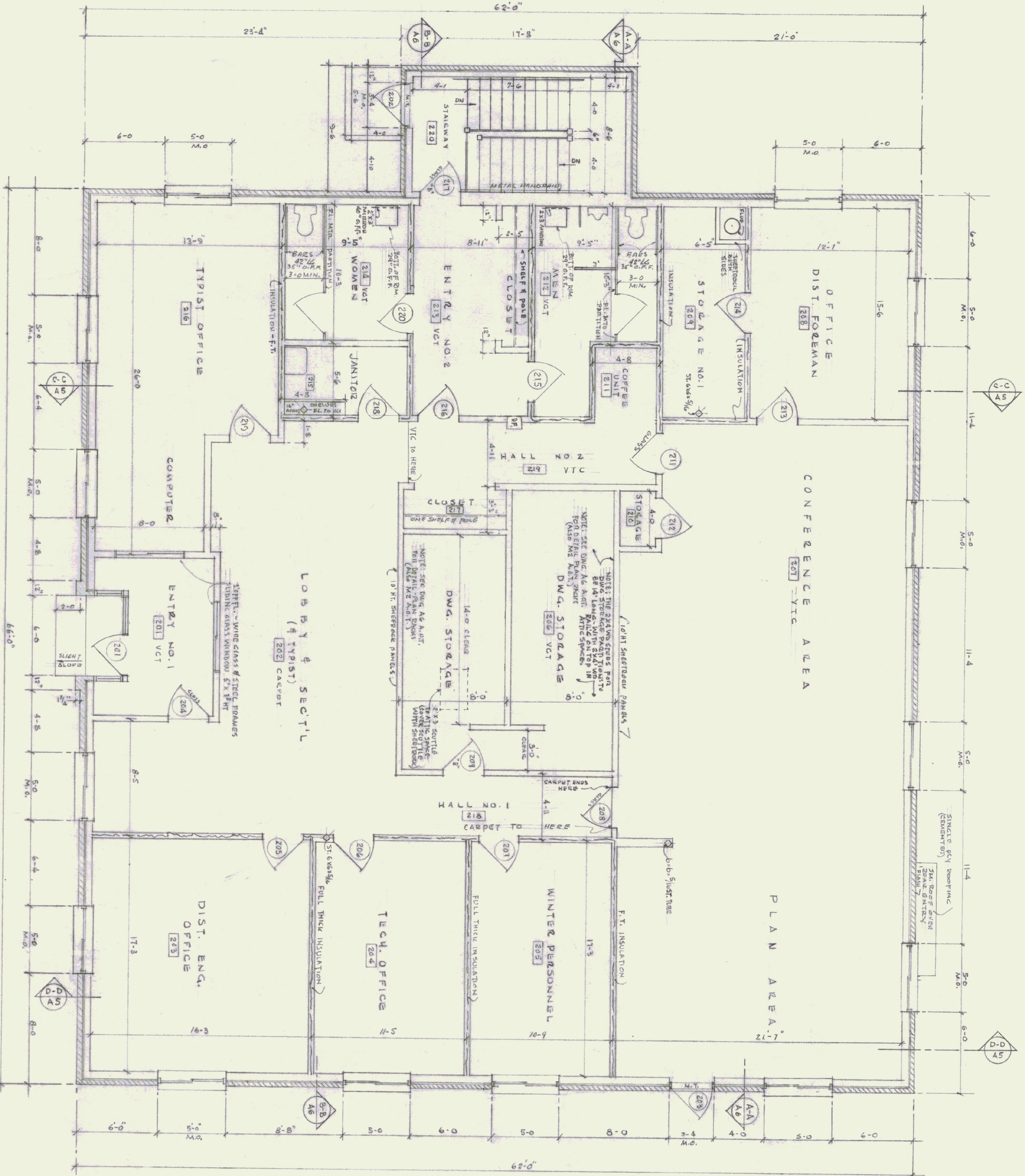
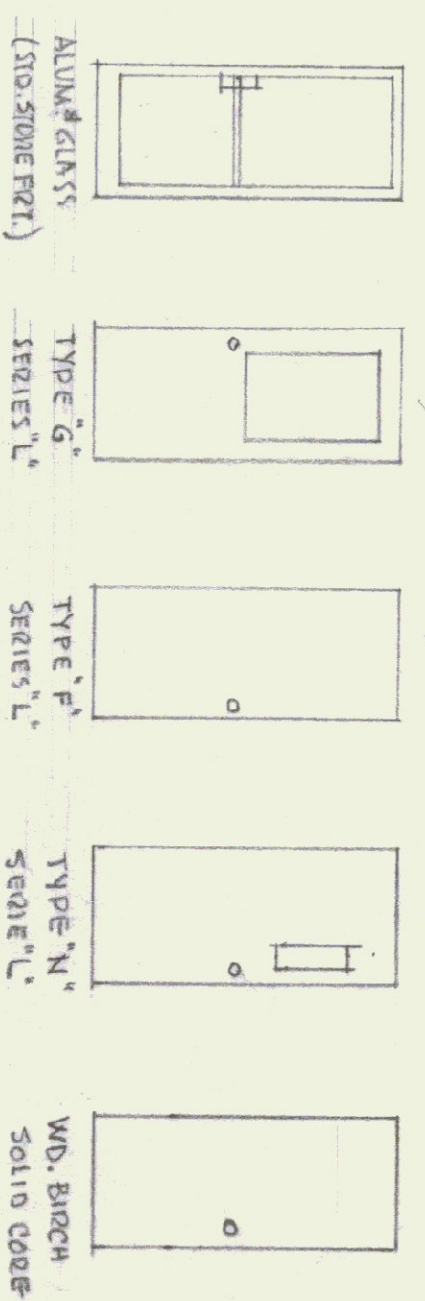


NOTE:
 ALL INTERIOR FINISHES, APPLICATION AND DECORATIVE HANGINGS ARE TO COMPLY WITH SECTIONS 1421.0, 1422.0, 1424.0; BBC-81 AND 835 RESPECTIVELY. INTERIOR WALL AND CEILING FINISH REQUIREMENTS ARE FOUND IN SECTION 1421.5. INTERIOR FLOOR FINISH REQUIREMENTS ARE FOUND IN SECTION 1421.7.

NOTES:
 ALL DIMENSIONS TO BE VERIFIED AT THE SITE BY THE CONTRACTOR. ANY FIELD OR POINTS IN QUESTION MUST BE REFERRED TO THE ACQUIRED FINISH REQUIREMENTS BEFORE PROCEEDING WITH THE WORK.

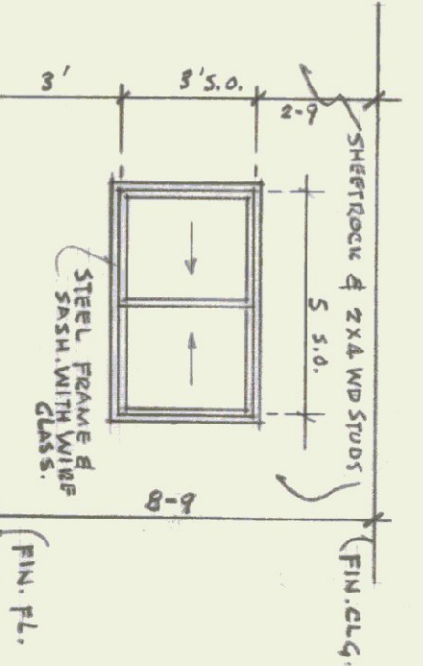


FIRST FLOOR PLAN
 SCALE: 1/4" = 1'-0"



NO.	SIZE	TYPE	FRAME	MAT'L	Label	BUITS	FRATE	LOCKSET	REMARKS
201	3' x 7'	"	ALUM.	"	"	1 1/2"	"	STD. SPINE FRONT MORTISE	
202	3' x 7'	"	"	"	"	1 1/2"	"	"	
203	3' x 7'	"	ALUM.	"	"	1 1/2"	"	TYPE 'F' - STAINLESS STEEL	
204	3' x 7'	"	ALUM.	"	"	1 1/2"	"	STD. SPINE FRONT MORTISE	
205	3' x 7'	"	"	"	"	1 1/2"	"	LOCK SET	
206	3' x 7'	"	"	"	"	"	"	LOCK SET	
207	3' x 7'	"	"	"	"	"	"	WITH GLASS PANEL - 24" x 36"	
208	3' x 7'	"	"	"	"	"	"	TYPE 'F' - SERIES 'L' - LOCKSET	
209	3' x 7'	"	"	"	"	"	"	"	
210	3' x 7'	"	"	"	"	"	"	"	
211	3' x 7'	"	"	"	"	"	"	WITH GLASS PANEL 24" x 36"	
212	3' x 7'	"	"	"	"	"	"	LOCKSET	
213	3' x 7'	"	"	"	"	"	"	LOCKSET	
214	3' x 7'	"	"	"	"	"	"	LOCKSET	
215	3' x 7'	"	"	"	"	"	"	PUSH-PULL	
216	3' x 7'	"	"	"	"	"	"	LOCK SET	
217	3' x 7'	"	"	"	"	"	"	LOCK SET	
218	3' x 7'	"	"	"	"	"	"	LOCK SET	
219	3' x 7'	"	"	"	"	"	"	LOCK SET	
220	3' x 7'	"	"	"	"	"	"	PUSH-PULL - CLUSTER	

NO.	SIZE	MAT'L	REMARKS
200	5' x 4'	ALUM.	"ACORN" - SERIES 2500 WINDOW - INSULVAL - 5/8" = 12.1, 1.6 & 5/8 INCHES GLASS SIZE 28' x 44'; UNIT SIZE: 4-1 1/8" x 4-0 1/8"



ELEV. OF SLIDING GLASS WINDOWS IN ENTRY NO. 1 PARTITIONS, (2).



DRAWN: J.W./B.W.
 CHECKED: C.C.W.
 DATE: MAR. 29, 1985
 SCALE: 1/4" = 1'-0"
 JOB NO.: 8480
 SHEET: A2
 OF 32 SHEETS

AGENCY OF TRANSPORTATION - NEW OFFICE
 STATE OF VERMONT STATE BUILDINGS DEPT.
 DUMMERSTON, VERMONT
 GORDON G. WOODS ASSOC. ARCHITECTS BURLINGTON, VERMONT

NO.	DATE	BY
1	8-9-85	JW
2	10-25-85	CW
3	2-18-86	
4	5-16-86	
5	1-12-87	