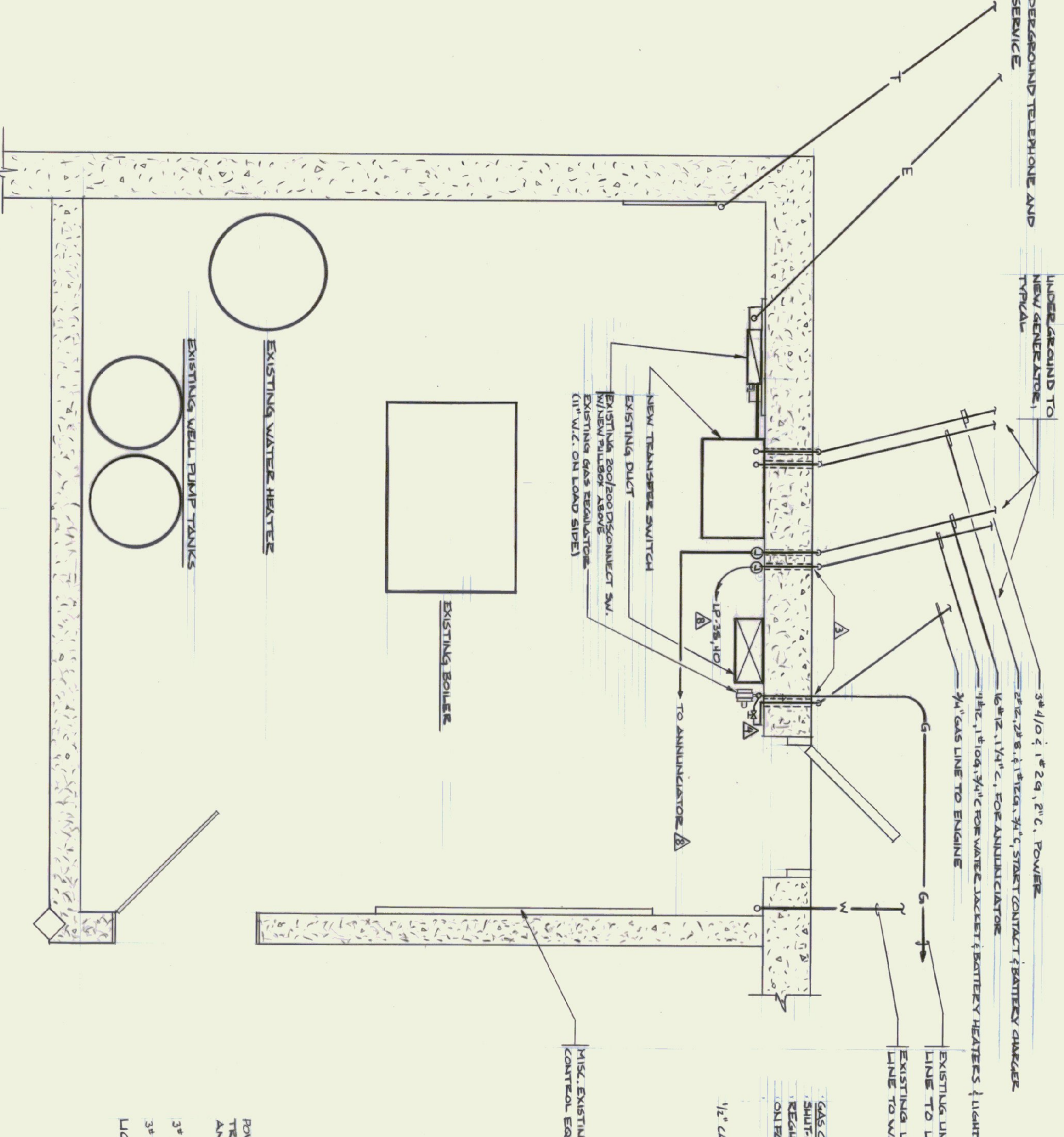
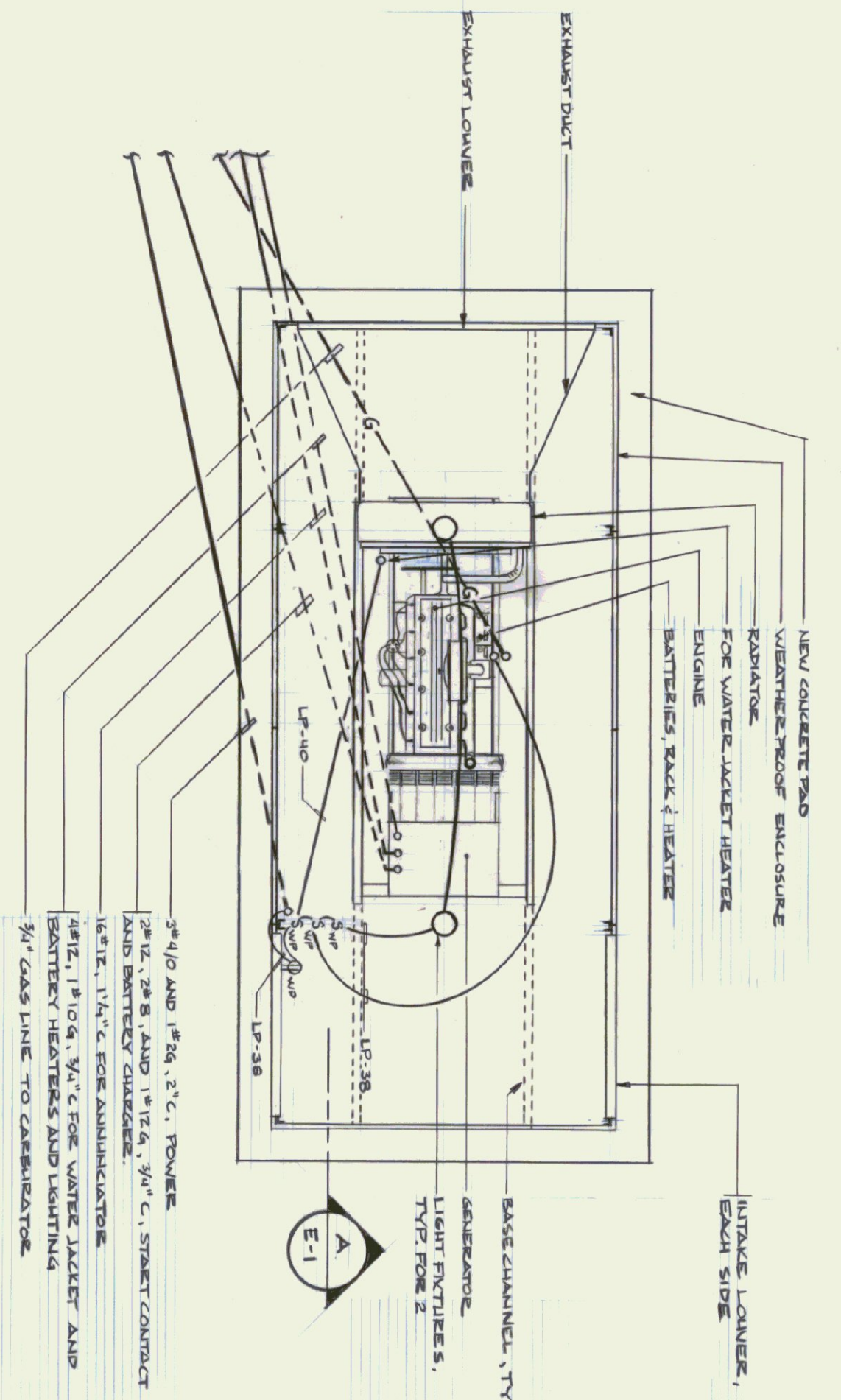


**SITE PLAN**  
SCALE: 1" = 20'-0"



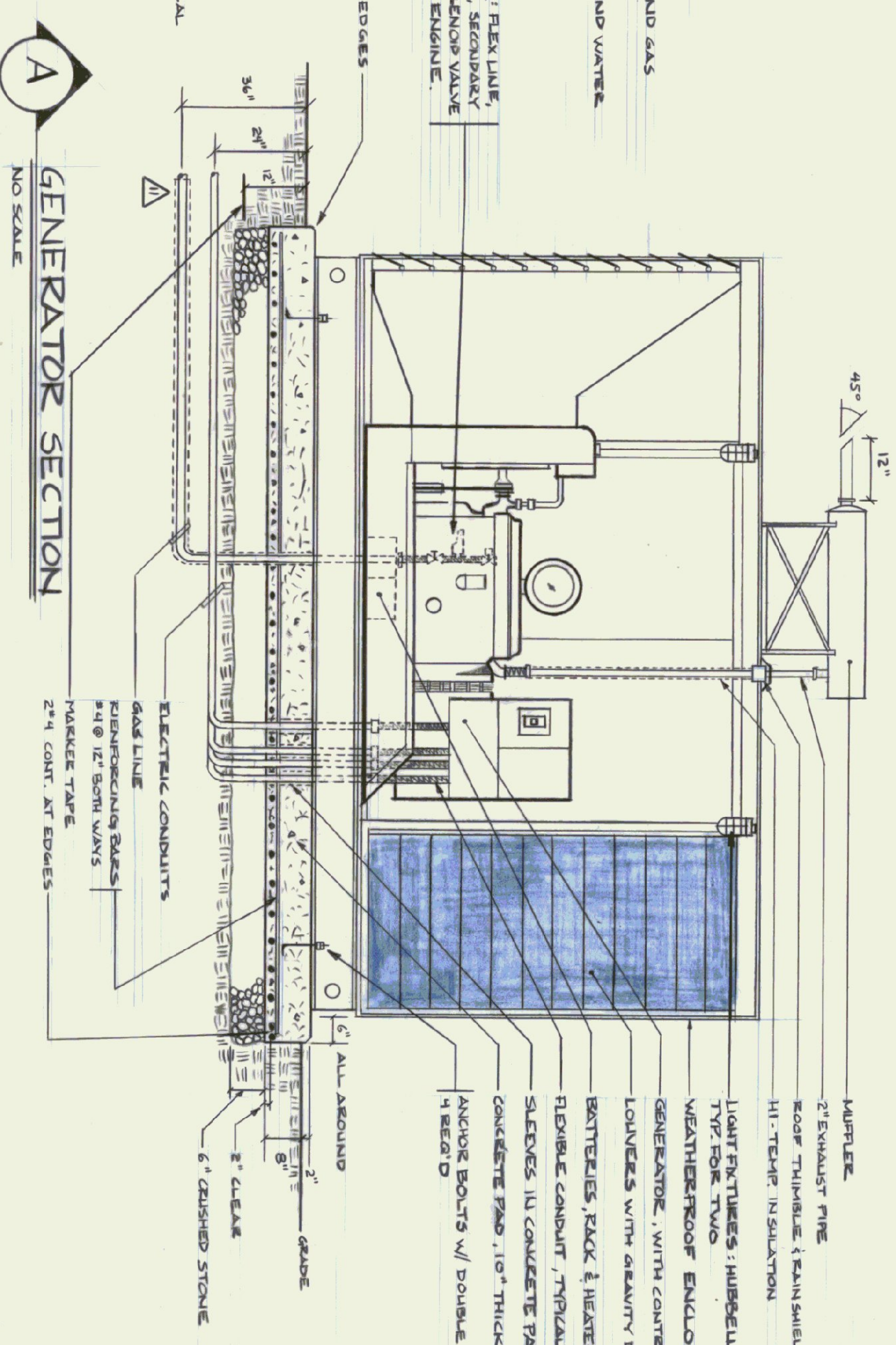
**MECHANICAL R.M. PLAN**  
SCALE: 1/2" = 1'-0"



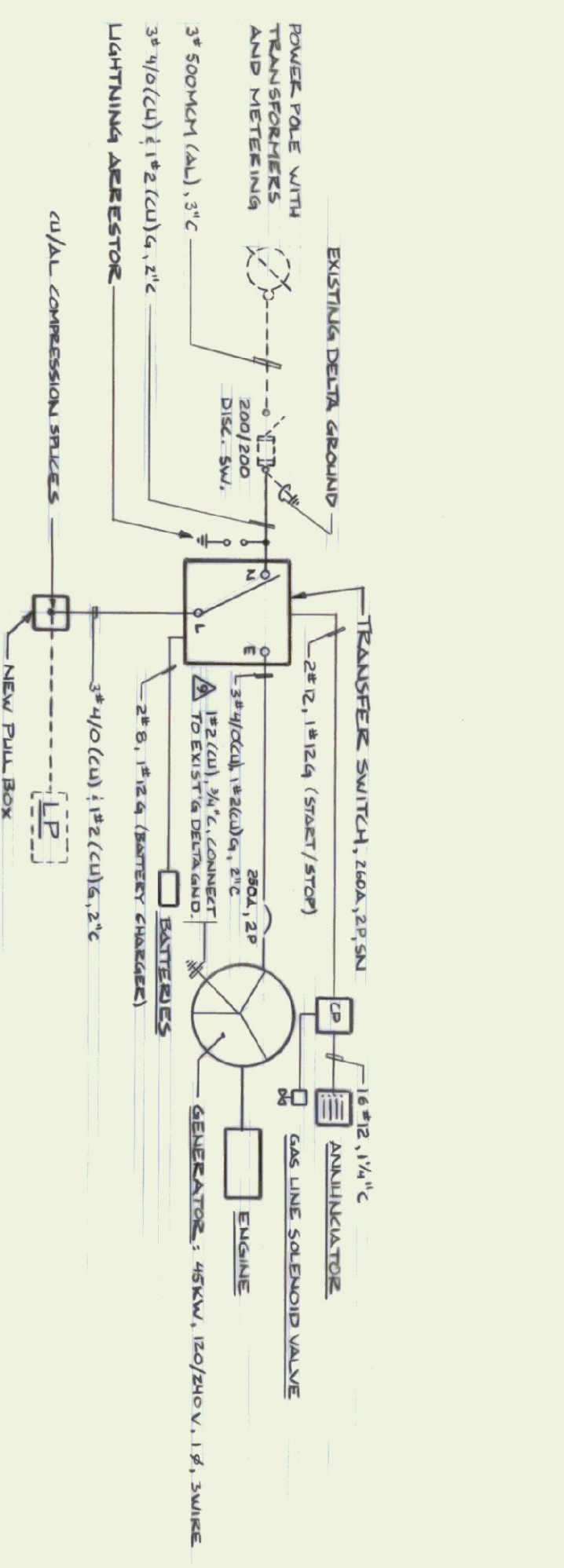
**GENERATOR PLAN**  
NO SCALE



NOTE: ALL UNDERGROUND TO EXISTING MECHANICAL ROOM. SEE ENLARGED MECHANICAL ROOM.



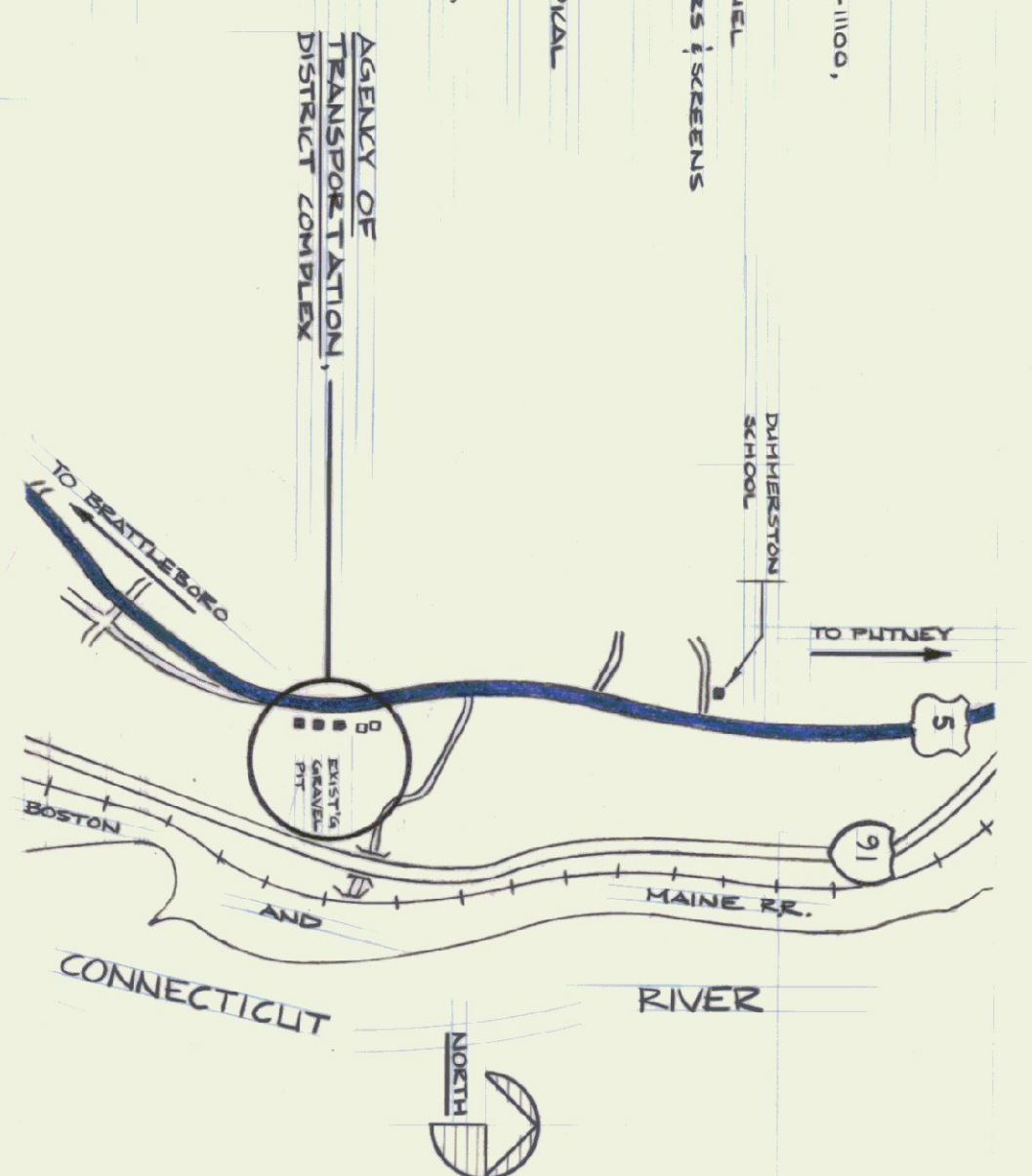
**GENERATOR SECTION**  
NO SCALE



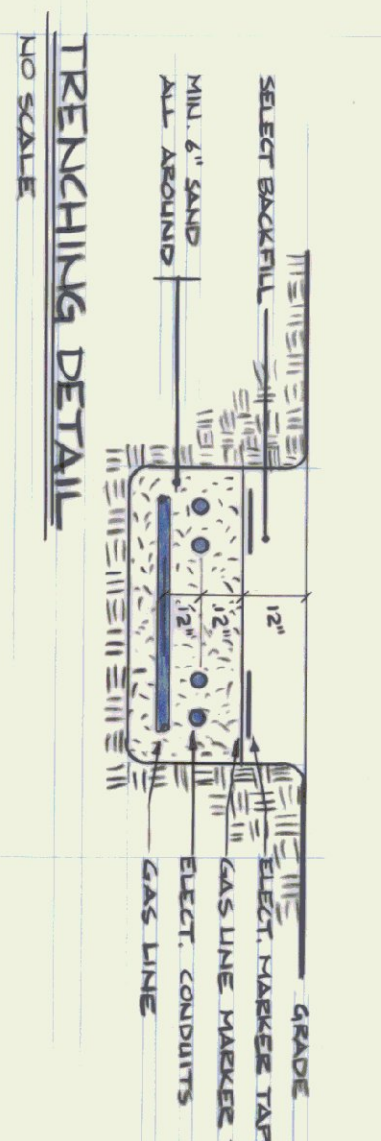
**ONE LINE DIAGRAM**  
NO SCALE

NOTE: DASHED SYMBOLS INDICATE EXISTING VOLTAGE & EQUIPMENT.

- DRAWING NOTES**
- △ COORDINATE EXACT ROUTE TO AVOID EXISTING UNDERGROUND UTILITIES. FIELD VERIFY EXISTING CONDITIONS PRIOR TO EXCAVATING.
  - △ RE-DETERMINE EXISTING BANK TO PROVIDE LEVEL AREA FOR GENERATOR, AND TO BURY WATERS AWAY FROM THE PAD. COORDINATE EXACT EXTENT OF GRADING WITH THE STATE.
  - △ PRELIMINATE EXISTING 12" THICK CONCRETE WALL ± 1'-6" ABOVE GRADE. REMOVE SLEEVES GROUTED INTO WALL AND WATER TIGHT SEAL BETWEEN CONDUIT AND SLEEVES.
  - △ PROVIDE NEW 48 KVA GENERATOR. FIELD VERIFY EXACT REQUIREMENTS, MOUNT SWITCHES AND RECEPTACLE ON CHANNEL FRAME OF EXISTING DOOR AND REMOVE LABELS. FIELD VERIFY EXACT LOCATION PRIOR TO REMOVAL. PROVIDE FLEXIBLE CONNECTIONS FOR ALL CONDUITS AND PIPING INCLUDING NICHROME AND CUTTING CONDUITS AT SWITCHES WHICH ARE NOT SHOWN ON THIS SECTION.
  - △ FLASH POINT AT 3'-0" IN WALL BEHIND RECEPTACLE DESK. VERIFY EXACT LOCATION WITH STATE PRIOR TO REMOVAL.
  - △ ROUTE CONDUITS ALONG BOTTOM OF STEEL JOISTS AT BASEMENT CEILING. FIELD VERIFY EXISTING CONDITIONS AND AVOID CONNECTIONS WITH EXISTING EQUIPMENT AND PIPING.
  - △ CONNECT TO GENERATOR NEUTRAL, GROUNDING, ENCLOSURE FRAME, 25-SAE (NIP) AND EXISTING DELTA GROUND.
  - △ VERIFY EXACT LOCATION OF ALL CONDUIT AND PIPING WITH GENERATOR MANUFACTURER PRIOR TO REMOVAL.
  - △ SLEEVES FOR GAS LINE SHALL BE CONTINUOUS TO 12" BEYOND EDGE OF SLAB.



**LOCATION MAP**  
NO SCALE



**TRENCHING DETAIL**  
NO SCALE

**THE STATE OF VERMONT**  
CHIEF ENGINEER  
LANCE M. HARRIS  
No. 4180  
PROFESSIONAL ENGINEER

**THE STATE OF VERMONT**  
MECHANICAL AND ELECTRICAL ENGINEERS  
BRUNING & ASSOCIATES  
81 KILLINGTON AVE.  
RUTLAND, VERMONT 05701  
(802) 773-7018

---

**PLANS & DETAILS**  
**EMERGENCY GENERATOR FOR THE**  
**DEPARTMENT OF TRANSPORTATION**  
**DUMMERSTON OFFICE BUILDING**  
**DUMMERSTON, VERMONT**

STATE OF VERMONT  
DEPARTMENT OF STATE BUILDINGS  
AGENCY OF ADMINISTRATION  
MONTPELIER, VERMONT

|                  |                          |            |              |
|------------------|--------------------------|------------|--------------|
| DATE: FEB 1988   | SCALE: AS SHOWN          | REVISIONS: | DWG. NO. E-1 |
| DRAWN BY: C.P.B. | APPROVED BY: [Signature] |            | 1 OF 1       |