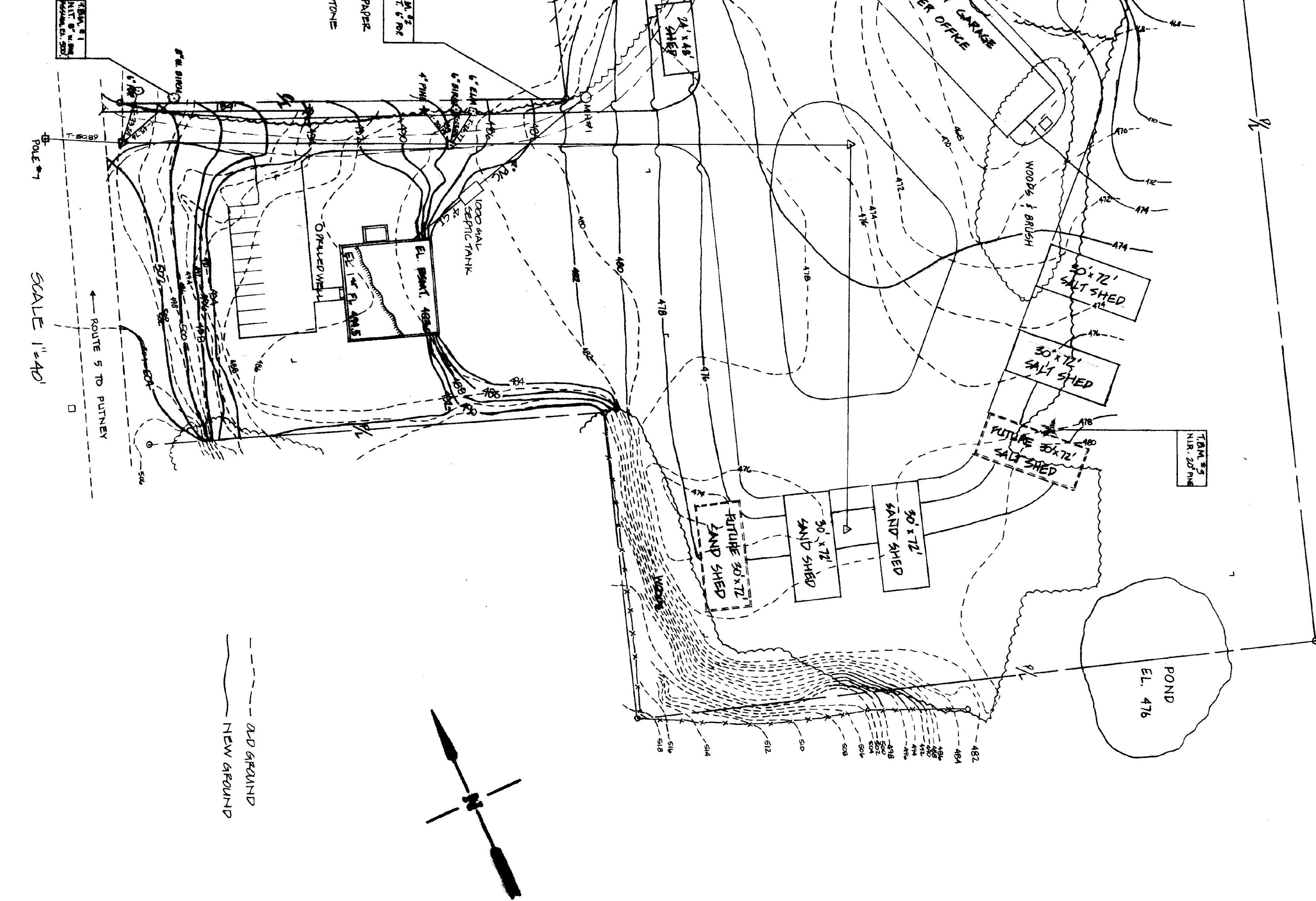
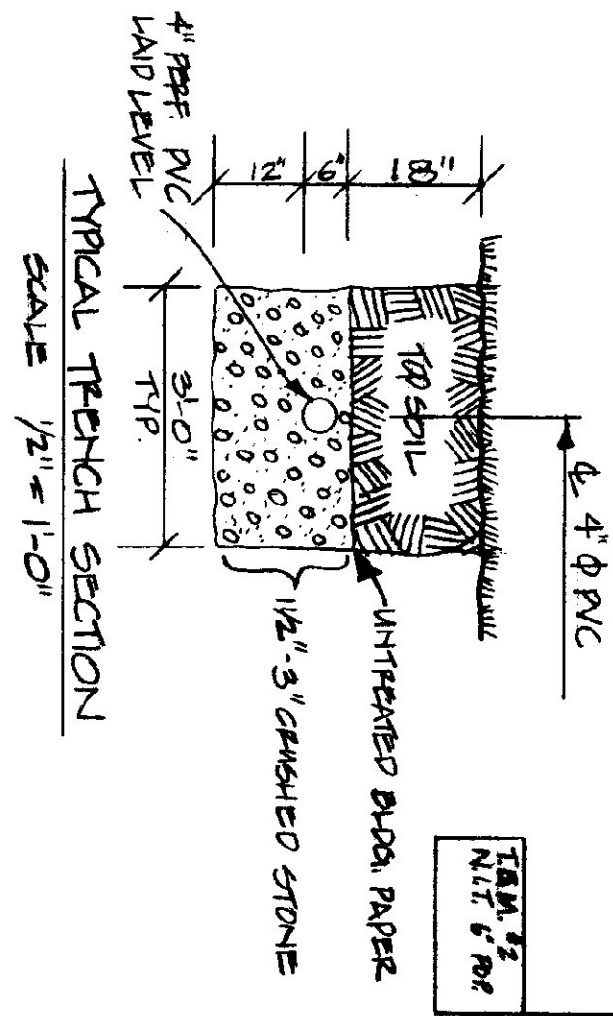


474	GROUND BLENV 472.5
473	
472	
471	
470	A-1-B GRAVEL
469	
468	
467	
466	
465	
464	

TP# 1 TP# 2
 HARDS STOPPED @ 8'-0"
 TEST PT LOG

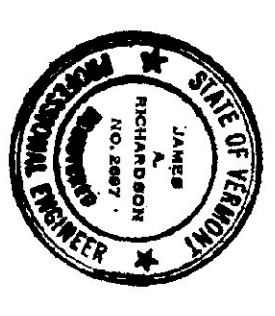
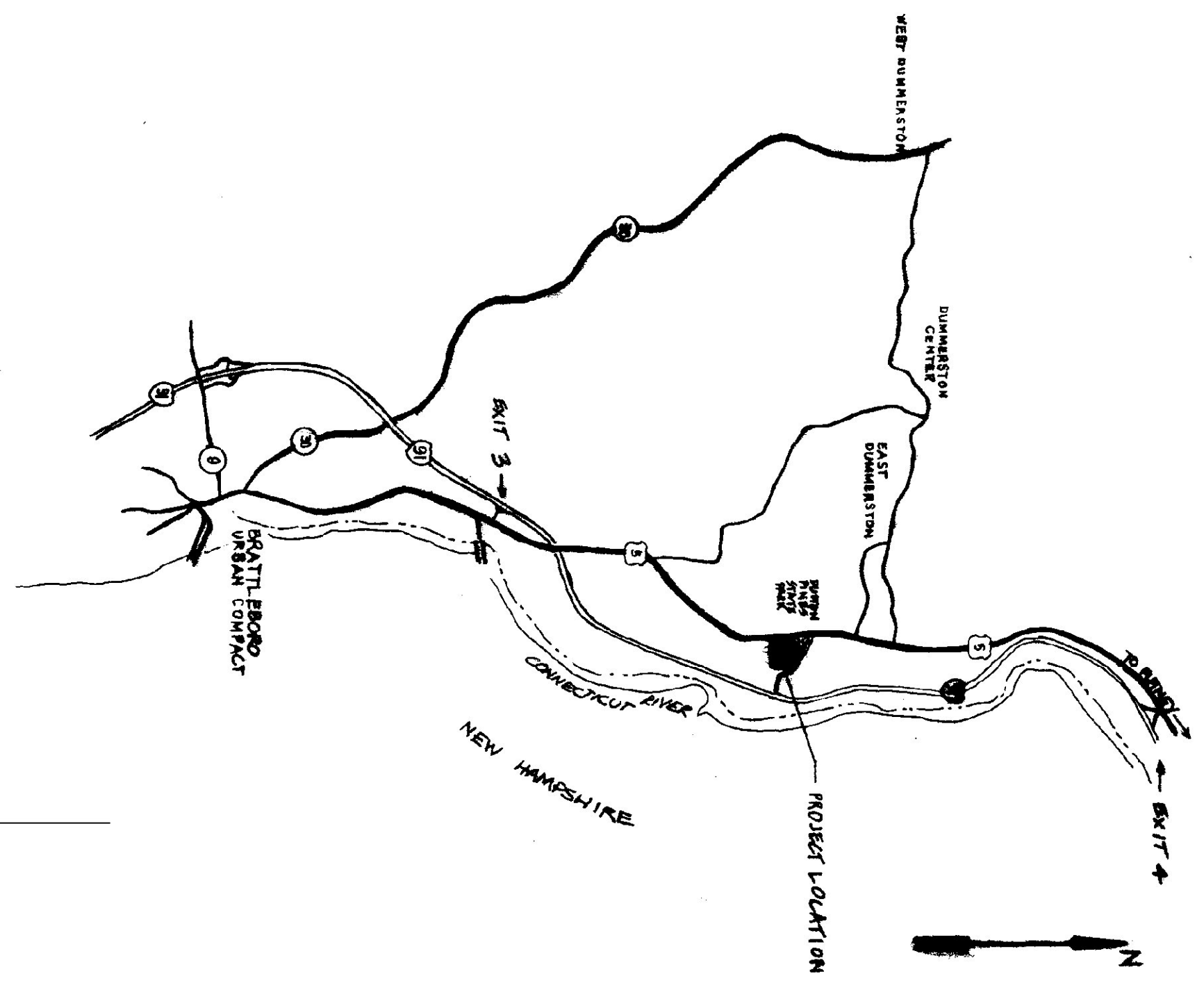


DESIGN DATA:

GARAGE - 25 EMPLOYEES (SUMMERTIME MAX.)
 OFFICE - 7 EMPLOYEES (WINTER TIME MAX.)
 INCIDENT FIELD OFFICE - 20 PEOPLE (5-7 HRS. TWICE A YEAR)
 PERCOLATION TEST - PT#1 - 3 MIN./INCH } 30" DEEP HOLES
 PT#2 - 5 MIN./INCH }
 DESIGN FLOWS: 25 X 15 = 355 GPD
 7 X 15 = 105 GPD
 20 X 5 = 100 GPD
 580 GPD

APPLICATION RATE (1.5 MIN/INCH = 1.34 GAL./FT.²/DAY)
 AREA OF TRENCH REQ. = $\frac{580}{1.34} = 433$ SQ. FT.
 FIELD SIZE: 4 TRENCHES 50 FT. LONG X 3 FT. WIDE =
 600 SQ. FT./433 = FACTOR SAFETY = 1.36

LOCATION MAP NOT TO SCALE



STATE OF VERMONT DEPARTMENT OF STATE BUILDINGS AGENCY OF ADMINISTRATION MONTPELIER, VERMONT	
SEWER PLAN AGENCY OF TRANSPORTATION DISTRICT #2 OFFICES & GARAGE COMPLEX	
DRAWN BY: J. RAITT	APPROVED BY: [Signature]
DATE: 2-6-85	SCALE: 1" = 40'
REVISIONS: 1/85 J.E.G.	VERMONT Dwg NO. S-D-2
18" x 18"	