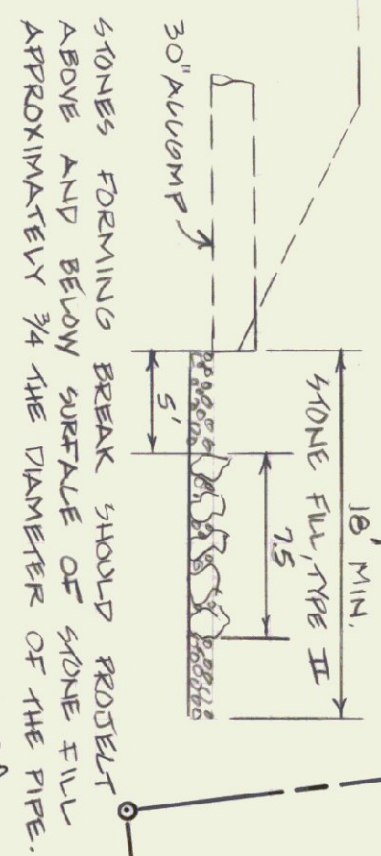
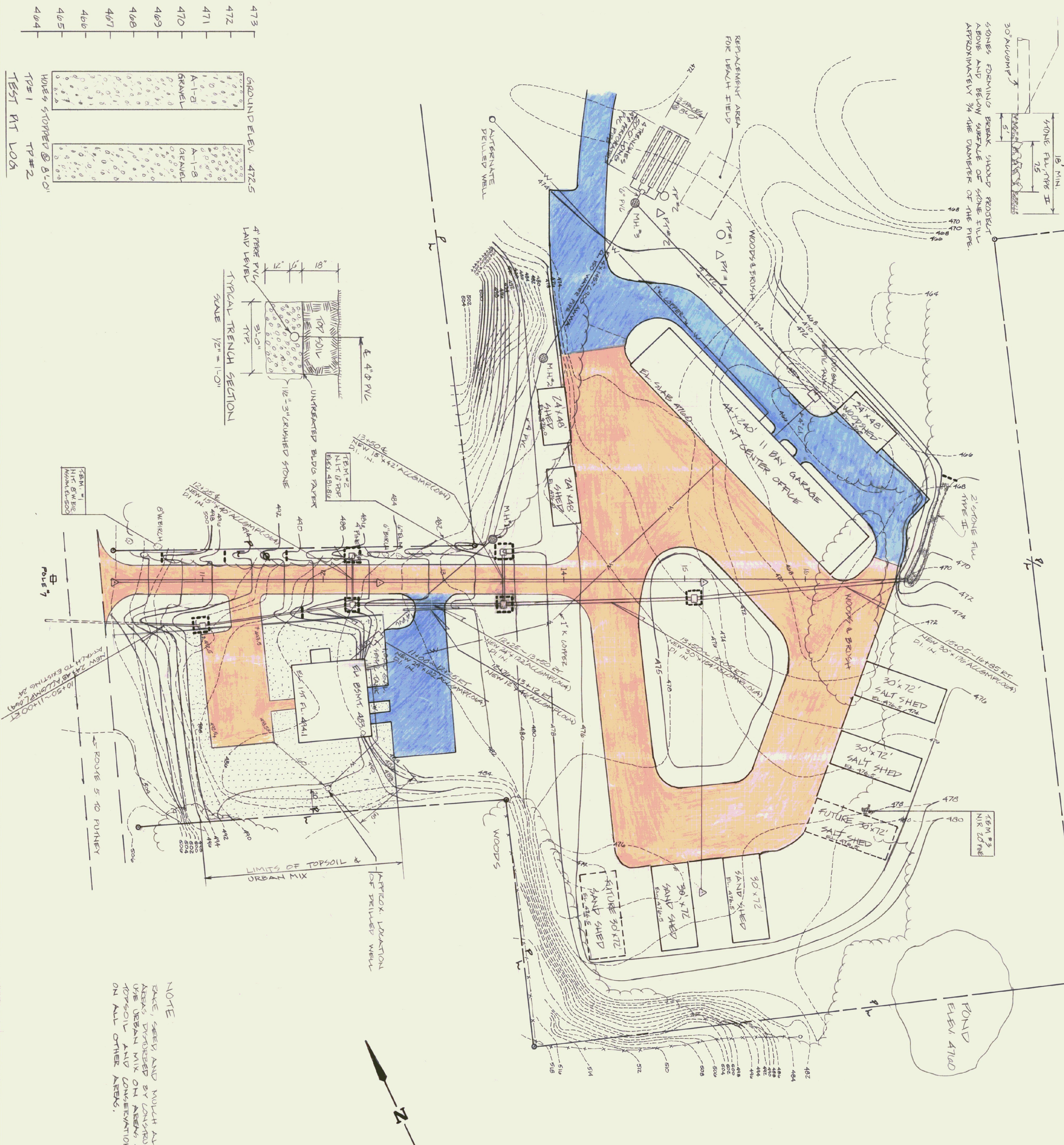


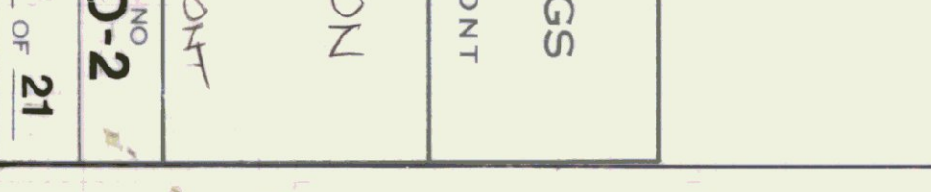
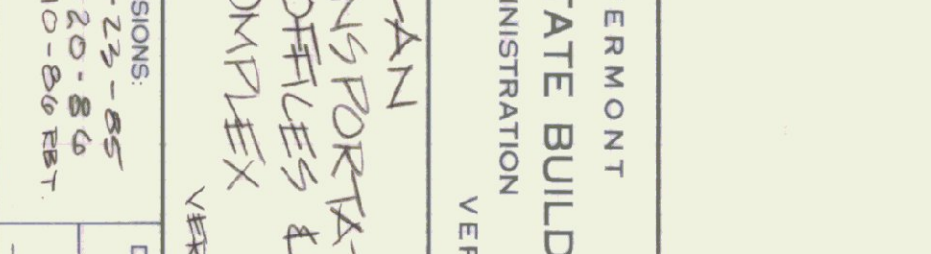
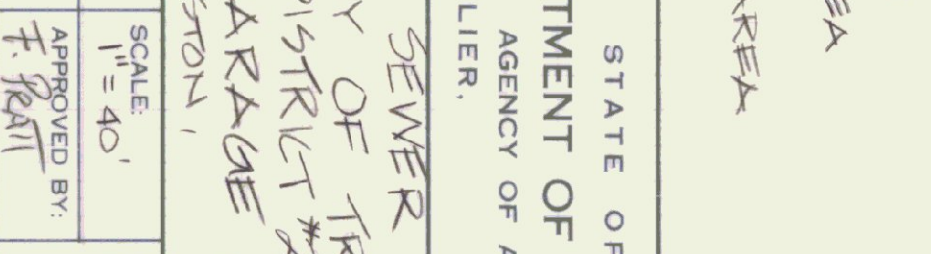
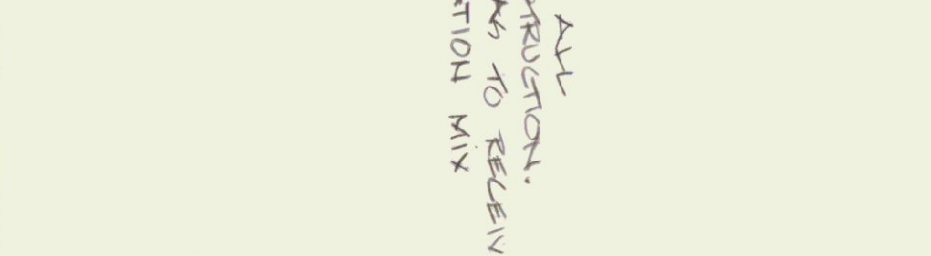
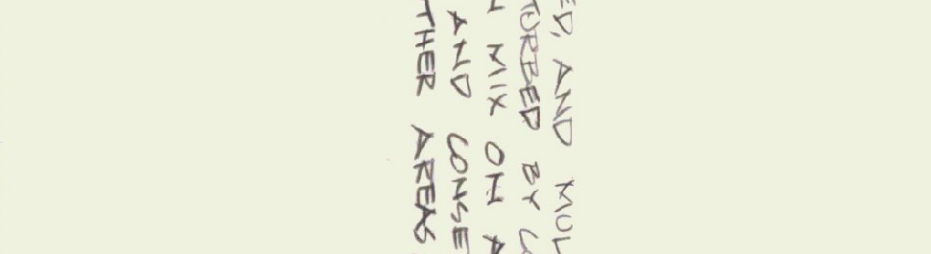
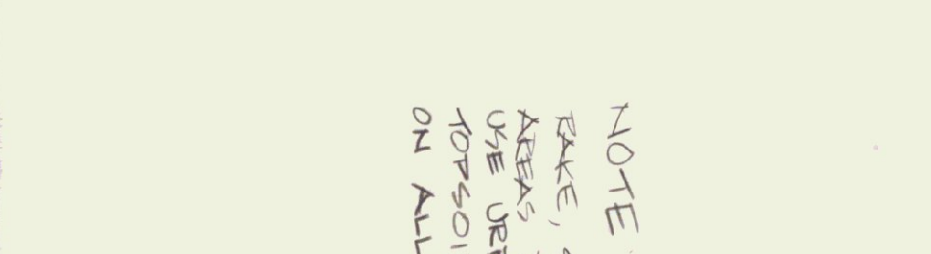
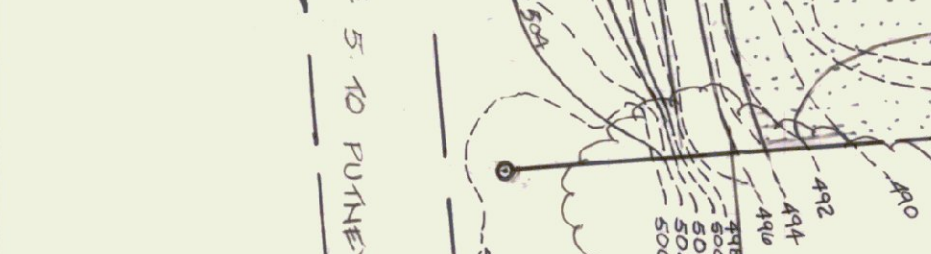
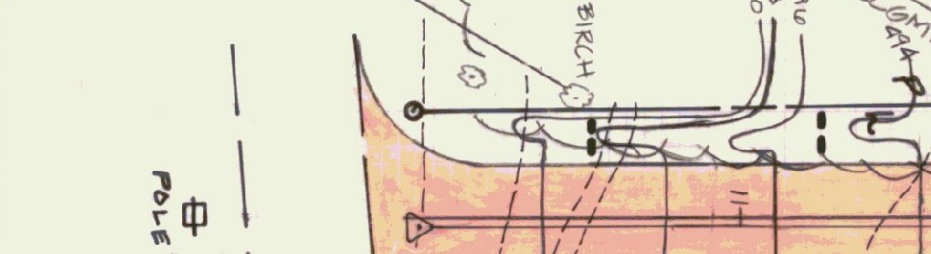
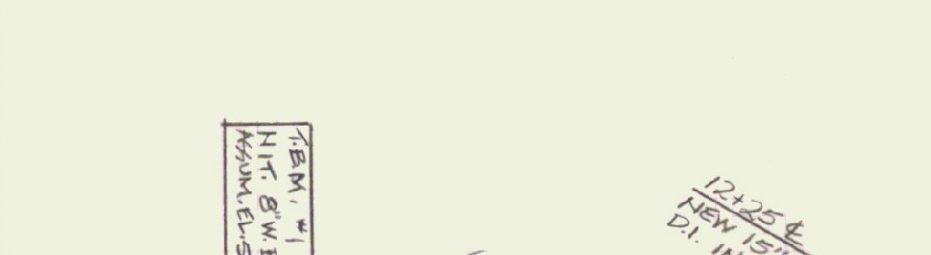
ENERGY DISPENSATOR FOR 30" LOWER @ STA. 10+85



STONES REMAINING BREAK SHOULD PROTECT ABOVE AND BELOW SURFACE OF STONE FILL APPROXIMATELY 3/4 THE DIAMETER OF THE PIPE.



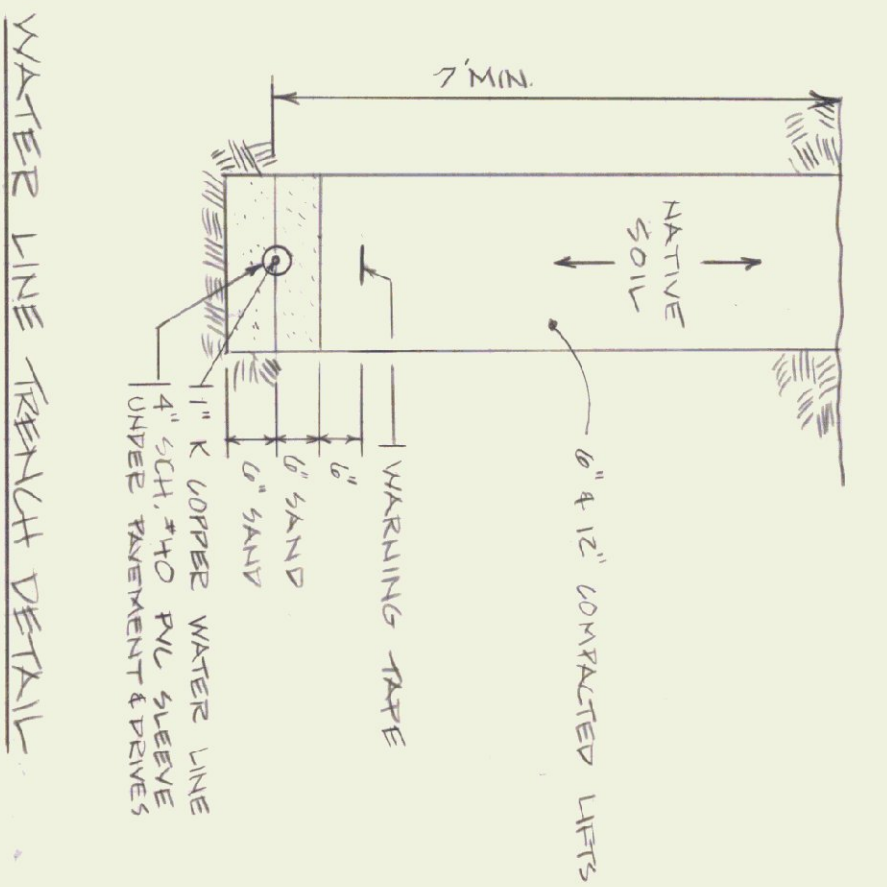
473	GROUND ELEV. 472.5
472	
471	
470	
469	
468	
467	
466	
465	
464	



NOTE:
 TAKE, SEED AND MOUND ALL AREAS DIVIDED BY CONSTRUCTION. USE URBAN MIX ON AREAS TO RECEIVE TOPSOIL AND CONSERVATION MIX ON ALL OTHER AREAS.

- TOPSOIL
- NEW GRAVEL AREA
- NEW PAVED AREA
- NEW CONTOURS
- EXISTING CONTOURS
- PAVED HAY LOCATIONS (SEE S&P FOR DETAILS)

DESIGN DATA:
 GARAGE - 25 EMPLOYEES (SUMMERTIME MAX)
 OFFICE - 7 EMPLOYEES (WINTER TIME MAX)
 INCIDENT FIELD OFFICE - 20 PEOPLE (5-7 HRS - TWICE A YEAR)
 PERCOLATION TEST - PT#1 - 3 MIN/INCH } 30" DEEP HOLES
 PT#2 - 5 MIN/INCH }
 DESIGN FLOWS
 25 X 15 = 375 GPD
 7 X 15 = 105 GPD
 20 X 5 = 100 GPD
 580 GPD
 APPLICATION RATE (1.5 MIN/INCH = 1.34 GAL./FT.2/DAY
 AREA OF TRENCH REQ. = 580 = 433 SQ. FT.
 FIELD SIZE: 4 TRENCHES SOFT LONG X 3 FT WIDE =
 600 SQ. FT./433 = FACTOR SAFETY = 1.38



STATE OF VERMONT	
DEPARTMENT OF STATE BUILDINGS	
AGENCY OF ADMINISTRATION	
MONTPELIER, VERMONT	
SEWER PLAN	
AGENCY OF TRANSPORTATION	
DISTRICT OFFICES &	
GARAGE COMPLEX	
DUMMERSTON, VERMONT	
DATE	SCALE
2-0-85	1" = 40'
DRAWN BY	REVISIONS
K.B.T.	1-23-85
	2-20-86
	3-10-86
APPROVED BY	DWG. NO.
F. Hall	SD-2
	3 OF 21