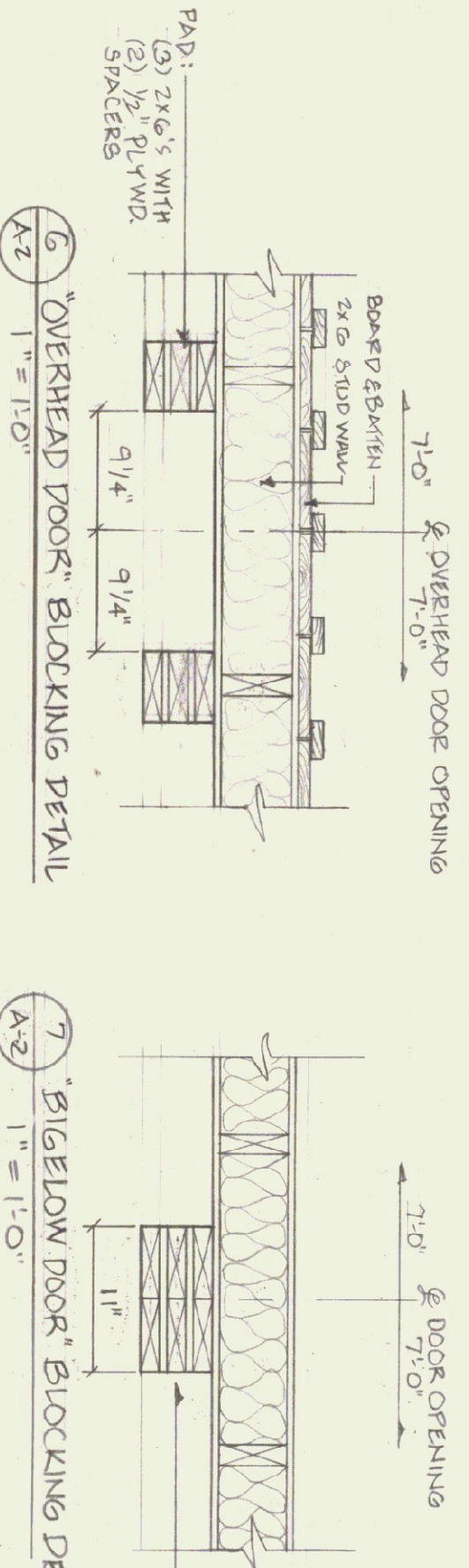
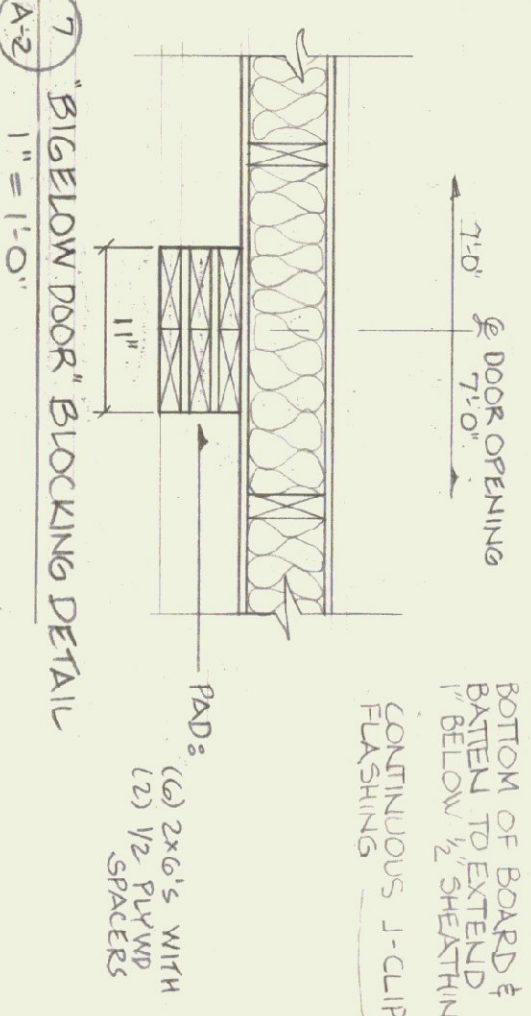


1/2" = 1'-0"  
**PANEL LAYOUT**

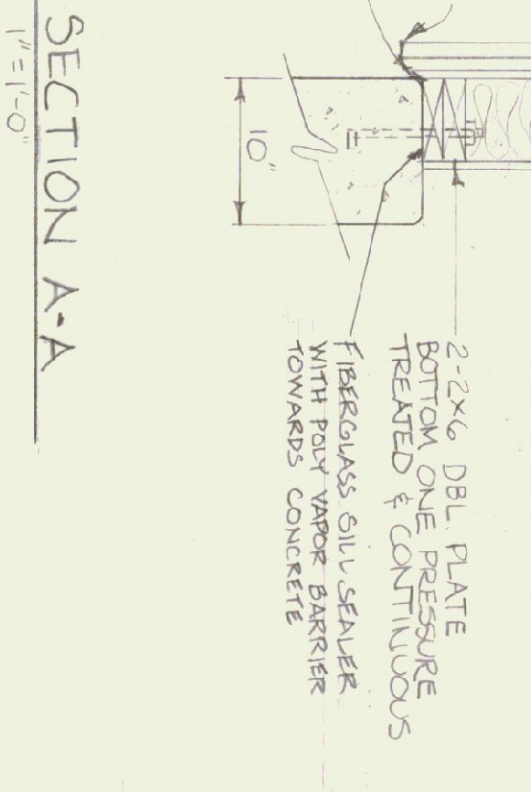
NOTE: ALL PANELS WITH A LETTER DESIGNATION TO BE PRE-FABRICATED AT THE SPRINGFIELD PREFAB PLANT & SHIPPED TO THE SITE



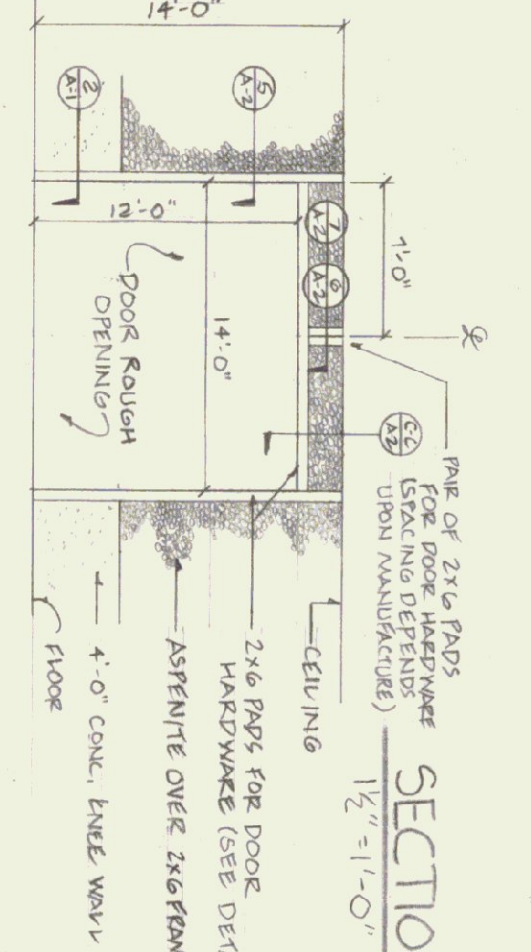
1/2" = 1'-0"  
**6 OVERHEAD DOOR BLOCKING DETAIL**



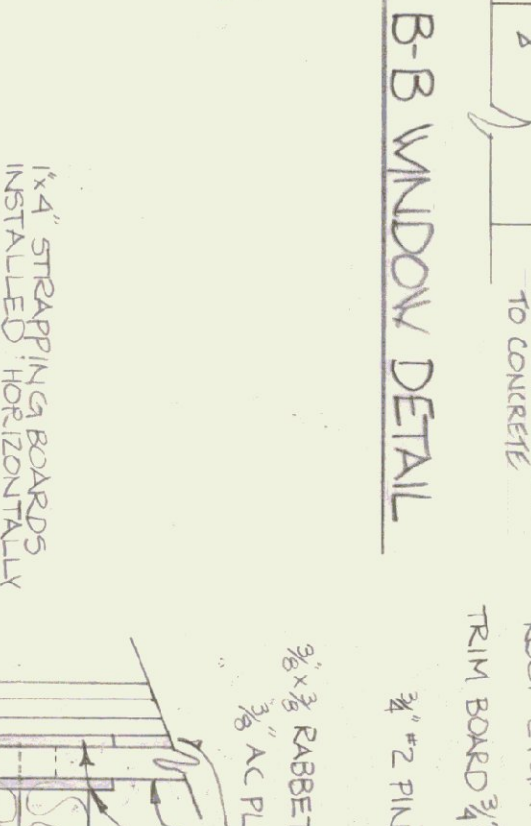
1/2" = 1'-0"  
**7 BIGELOW DOOR BLOCKING DETAIL**



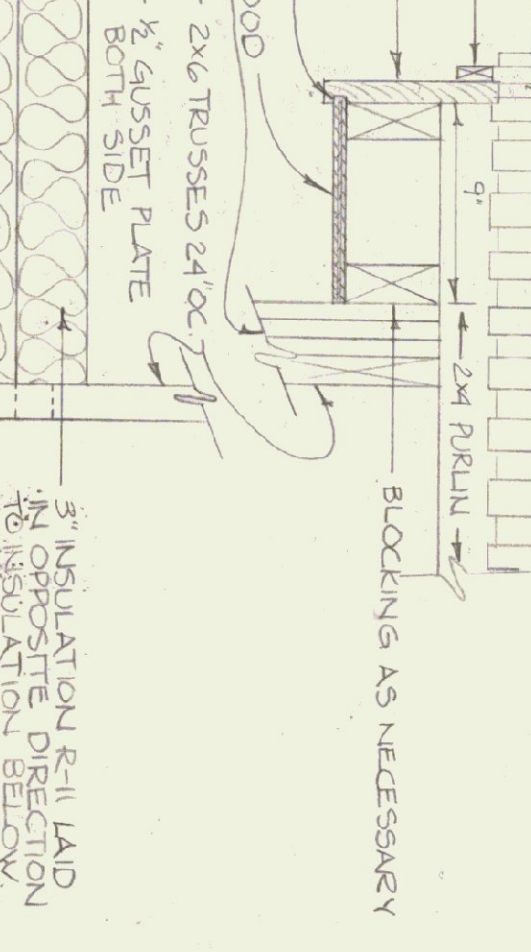
1/2" = 1'-0"  
**SECTION A-A**



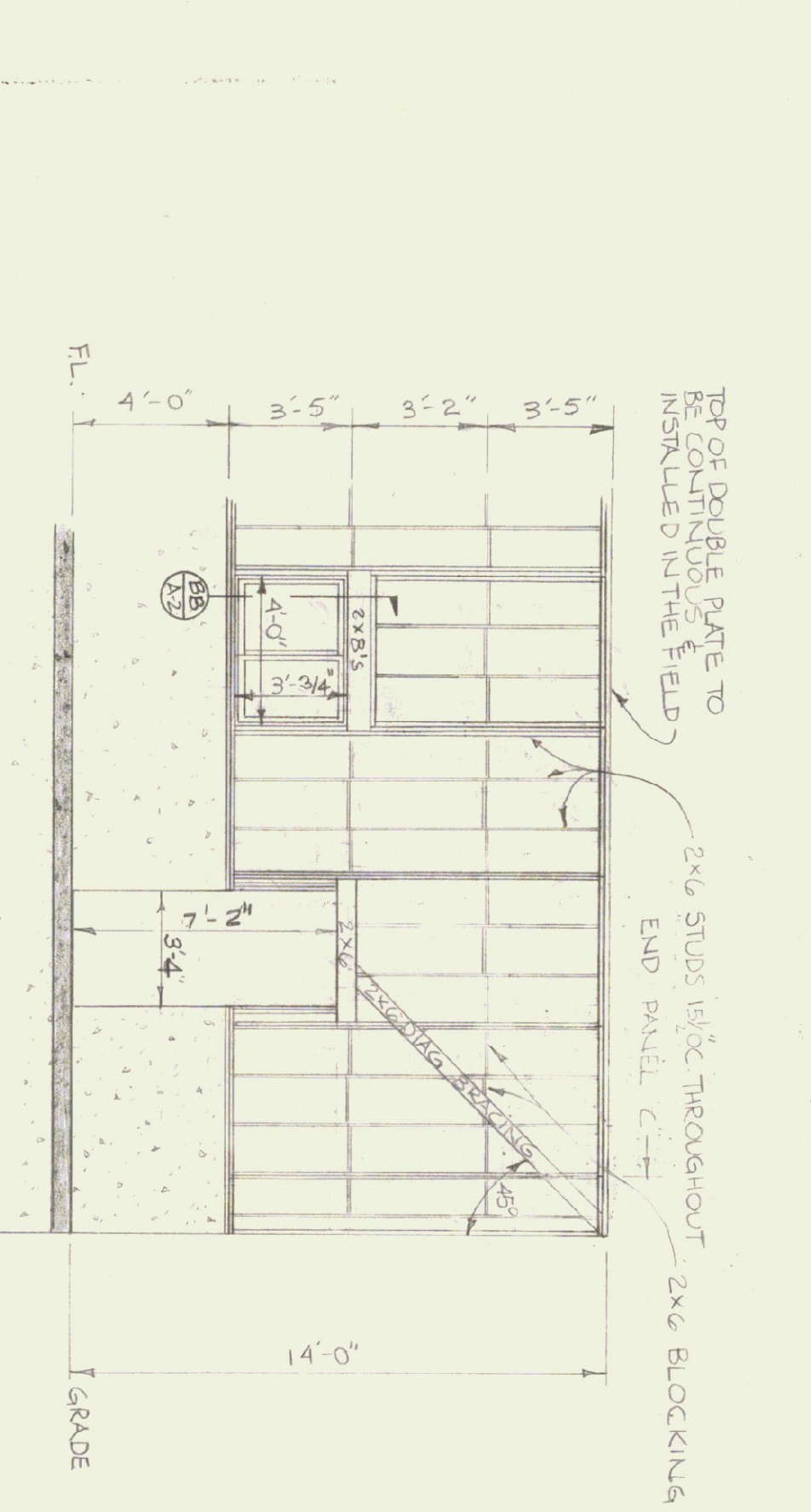
1/2" = 1'-0"  
**8 DETAIL 8 INTERIOR ELEVATION OF 2x6 FRAMING ABOUT GARAGE DOORS**



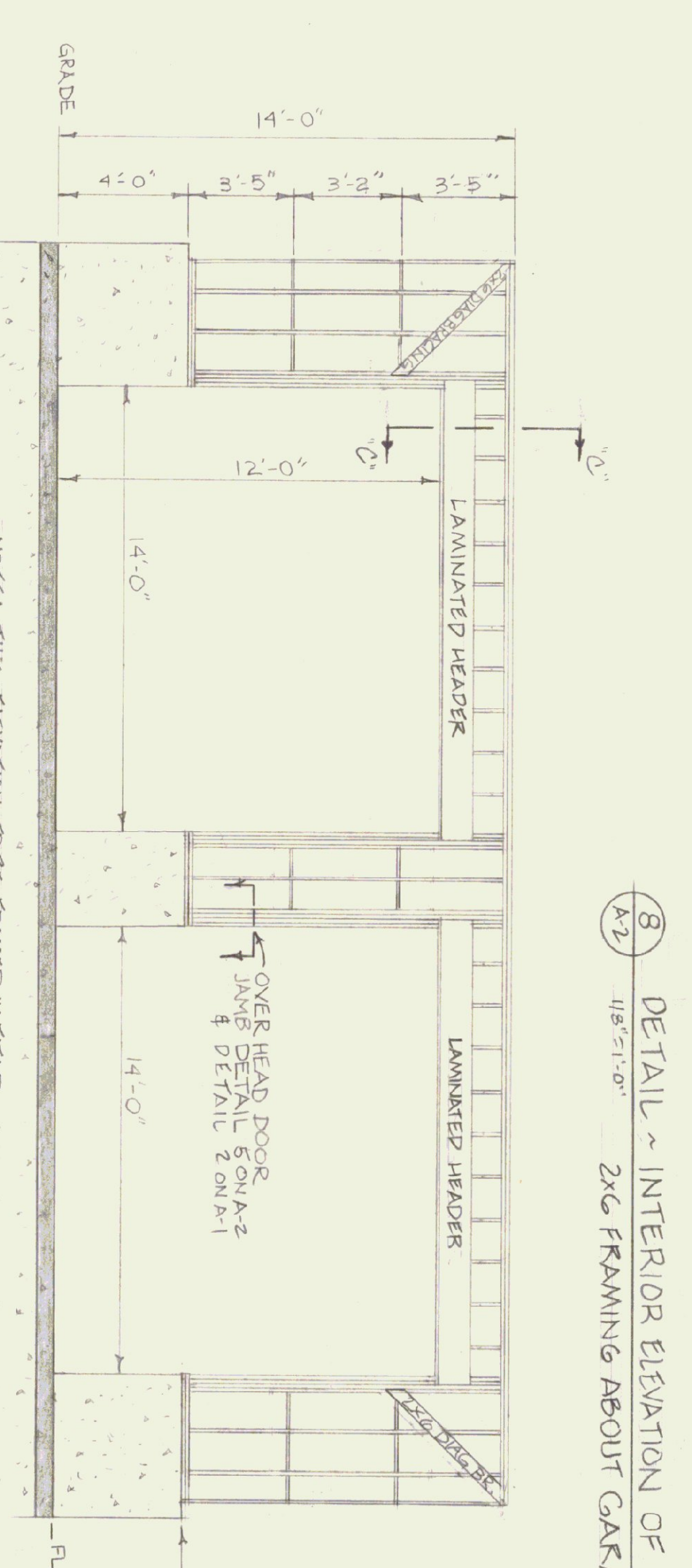
1/2" = 1'-0"  
**SECTION B-B WINDOW DETAIL**



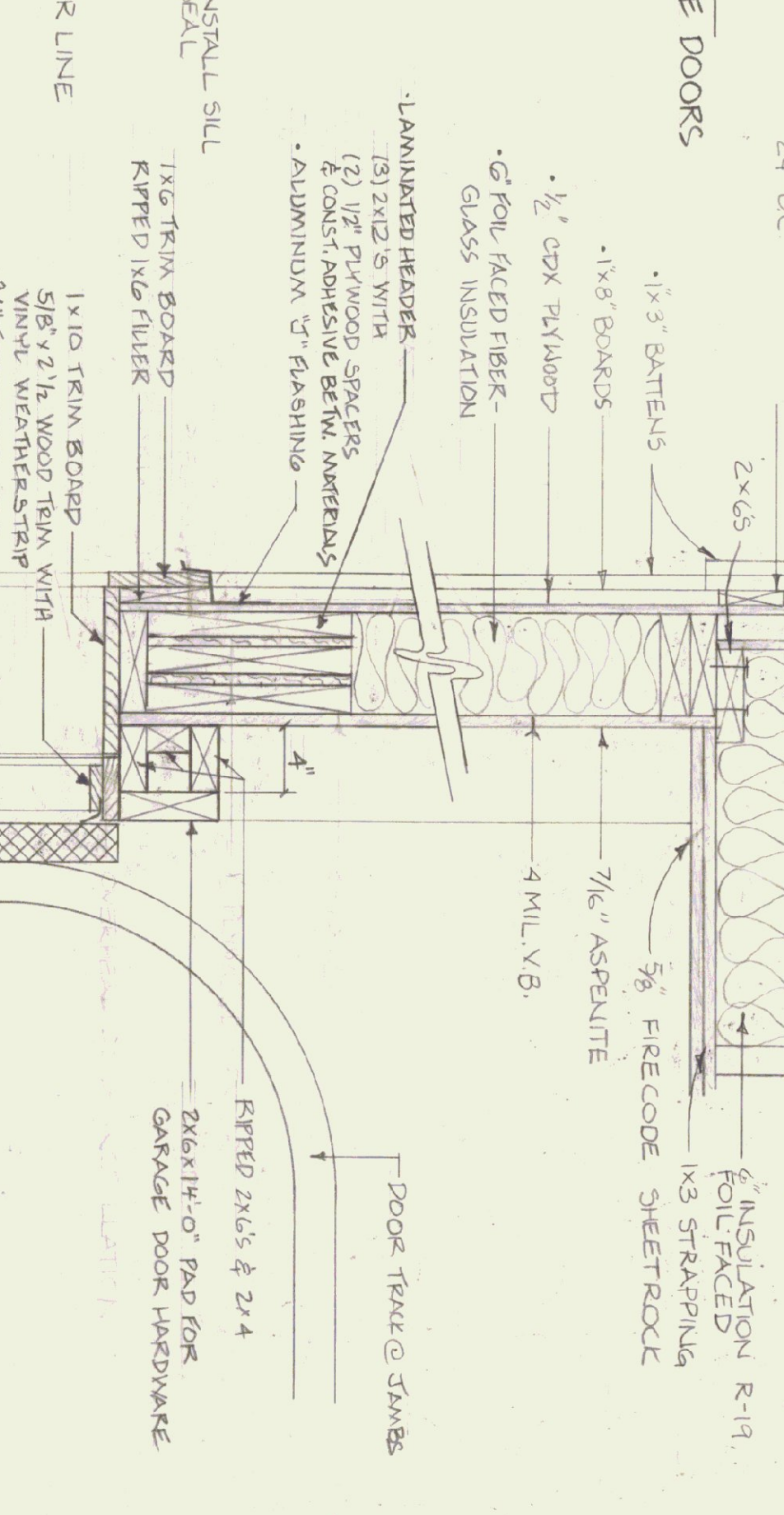
1/2" = 1'-0"  
**5 OVERHEAD DOOR JAMB**



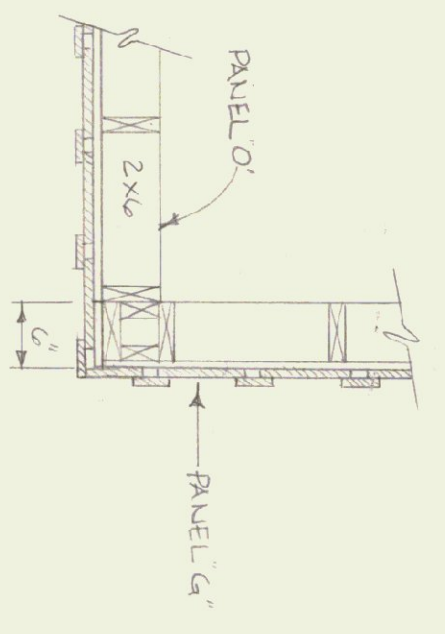
1/4" = 1'-0"  
**EXTERIOR ELEVATION WINDOW DOOR OPENING**



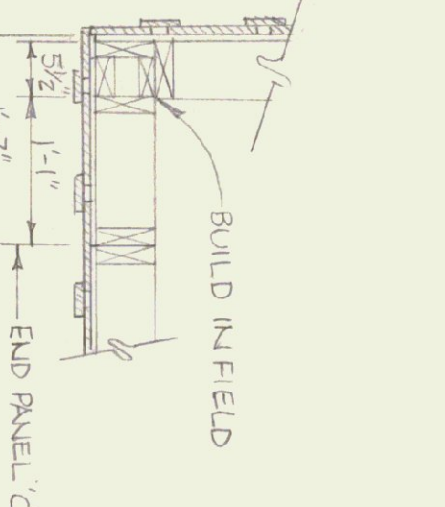
1/4" = 1'-0"  
**INTERIOR ELEVATION OVERHEAD DOOR OPENING**



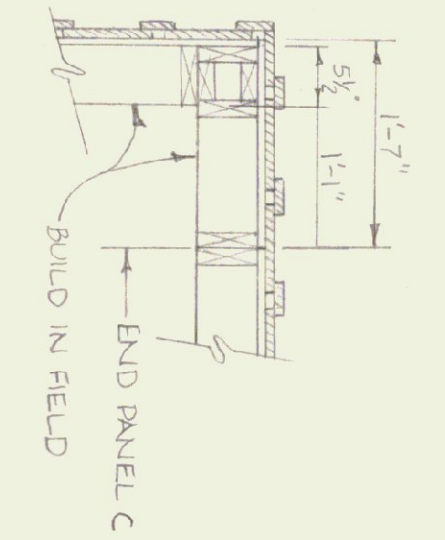
1/2" = 1'-0"  
**SECTION C-C HEADER**



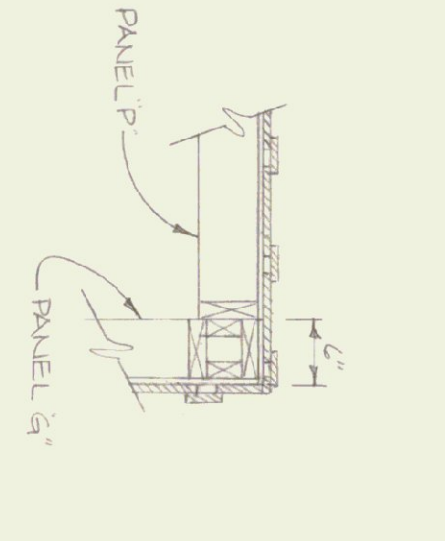
1/4" = 1'-0"  
**DETAIL 1**



1/4" = 1'-0"  
**DETAIL 2**

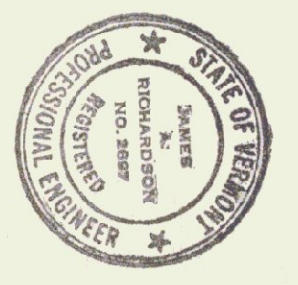


1/4" = 1'-0"  
**DETAIL 3**



1/4" = 1'-0"  
**DETAIL 4**

NOTES:  
 ALL DIAGONAL BRACING TO BE LET INTO STUDS. FINISH INSIDE ENDS TO EACH STUD.  
 ALL BRACING WILL BE ON THE INSIDE SURFACE ONLY.  
 INSTALL SILL SEAL ALL AROUND NEW CONSTRUCTION.



STATE OF VERMONT		VERMONT	
DIVISION OF STATE BUILDINGS		AGENCY OF ADMINISTRATION	
MONTPELIER, VERMONT		VERMONT	
<b>PROPOSED 2-BAY MAINTENANCE GARAGE</b>			
40' x 50'			
DATE: 3/14/83	SCALE: AS SHOWN	REVISIONS: 570	DWG. NO. A-2
DRAWN BY: PA. RACETTI	APPROVED BY: F. RACETTI		2 OF 3