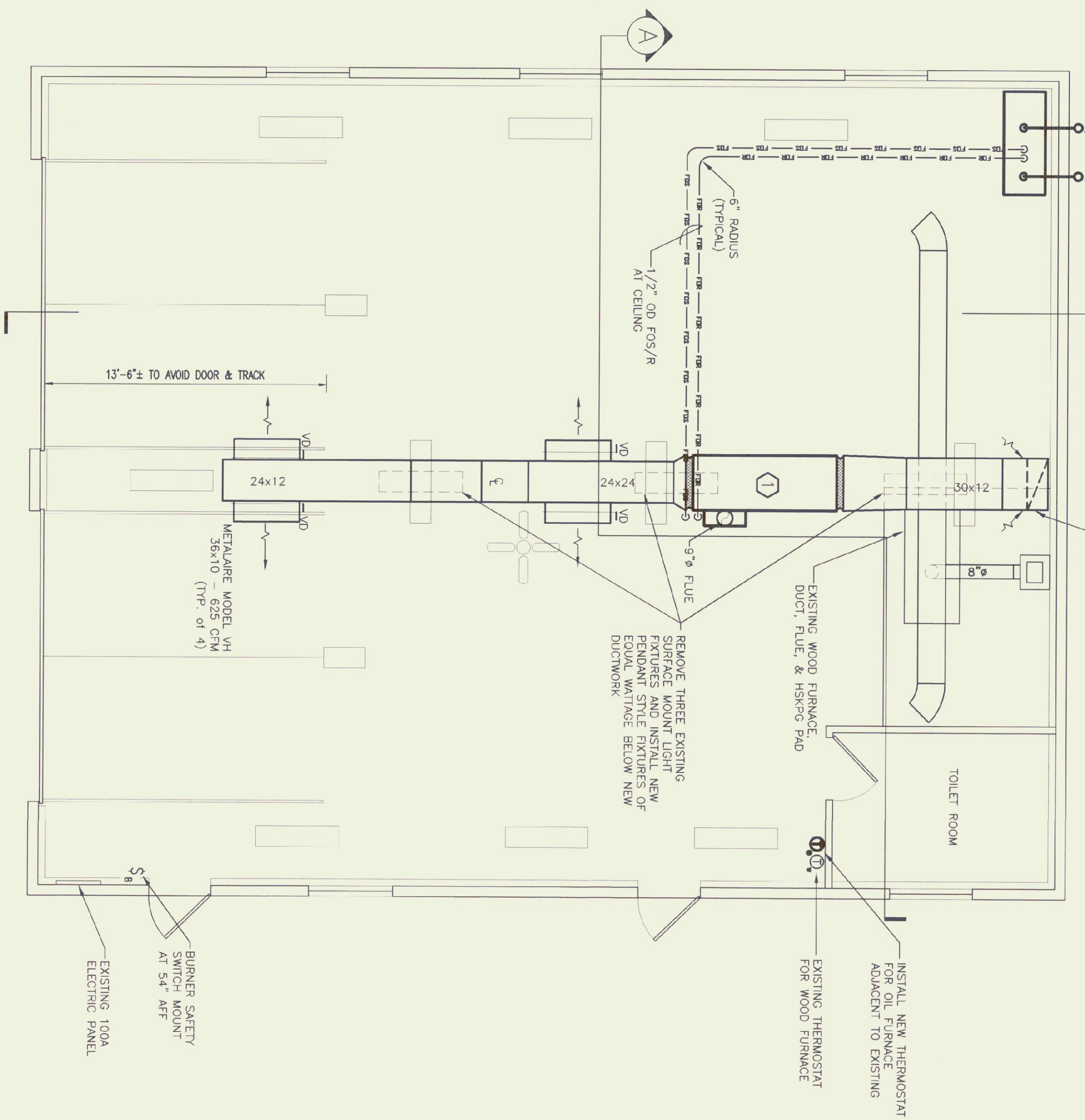
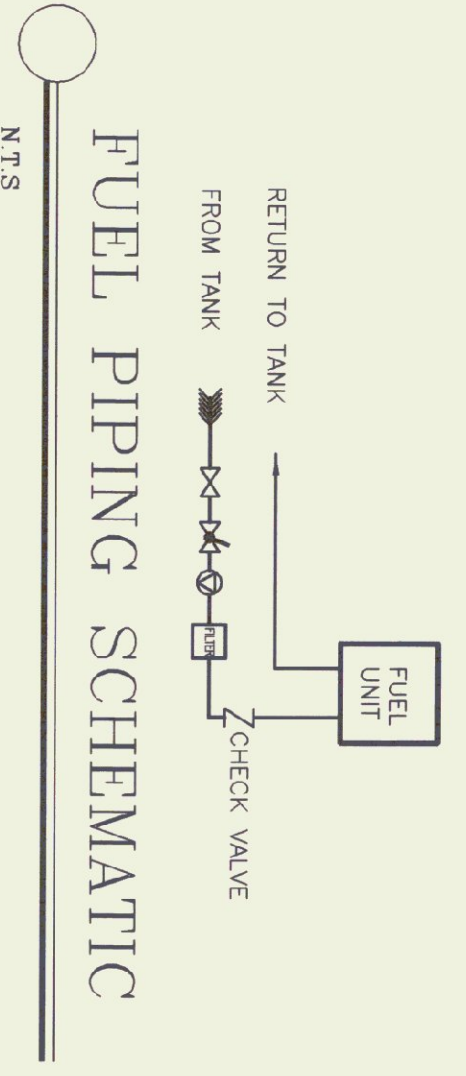


1-1/2" FIL AND 1-1/4" VENT
 - SEAL AROUND PIPES WITH
 FLEXIBLE SILICONE SEALANT

RETURN 19" AFF PROVIDE FILTER
 RACK FOR 2-20 X25 X2" PROVIDE FILTERED



FLOOR PLAN
 1/4" = 1'-0"

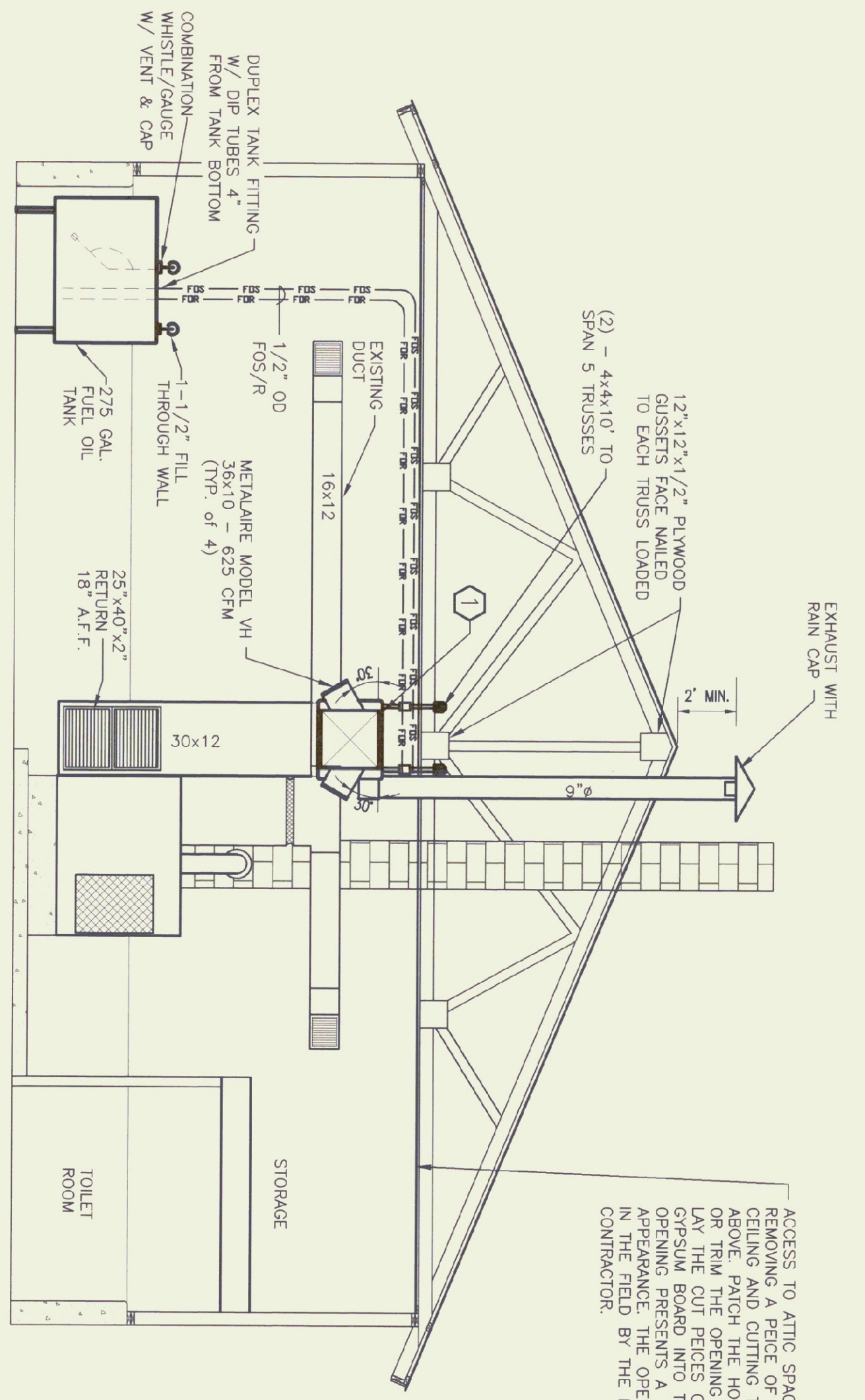


FURNACE SCHEDULE

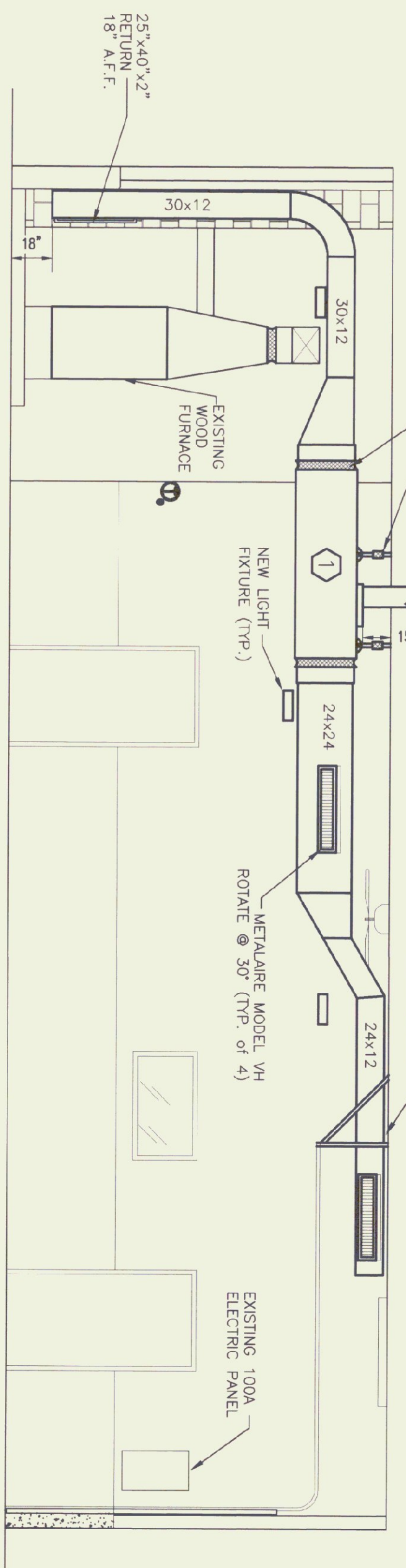
MAKE / MODEL	BTU OUTPUT	FUEL	CFM	BLOWER HP	VOLTAGE	FLUE
JACKSON - CHURCH 280-23	224,000	# 2 OIL	2440	3/4	115	9"

LEGEND

- FD FIRE DAMPER
- VD VOLUME DAMPER
- ⊖ THERMOSTAT X: 0 = OIL W = WOOD
- ⊗ FULL PORTED BALL VALVE
- ⊗ BREAKING VALVE SPRING LOADED W/LEVER & WIRE TO RISIBLE LINK ⊙ BURNER WESTER OSV
- ⊖ PRESSURE VACUUM GAUGE
- ⊕ UNION
- ⊕ AUTOMATIC AIR VENT ON 5" AIR CHAMBER
- ⊕ STRAP ON ADJUST SET ⊙ 120°F
- ⊕ STRAINER
- ⊕ DRAIN
- ⊕ VIBRATION ISOLATOR
- ⊕ FUEL OIL TRANSFER PUMP
- ⊕ BURNER SAFETY SWITCH



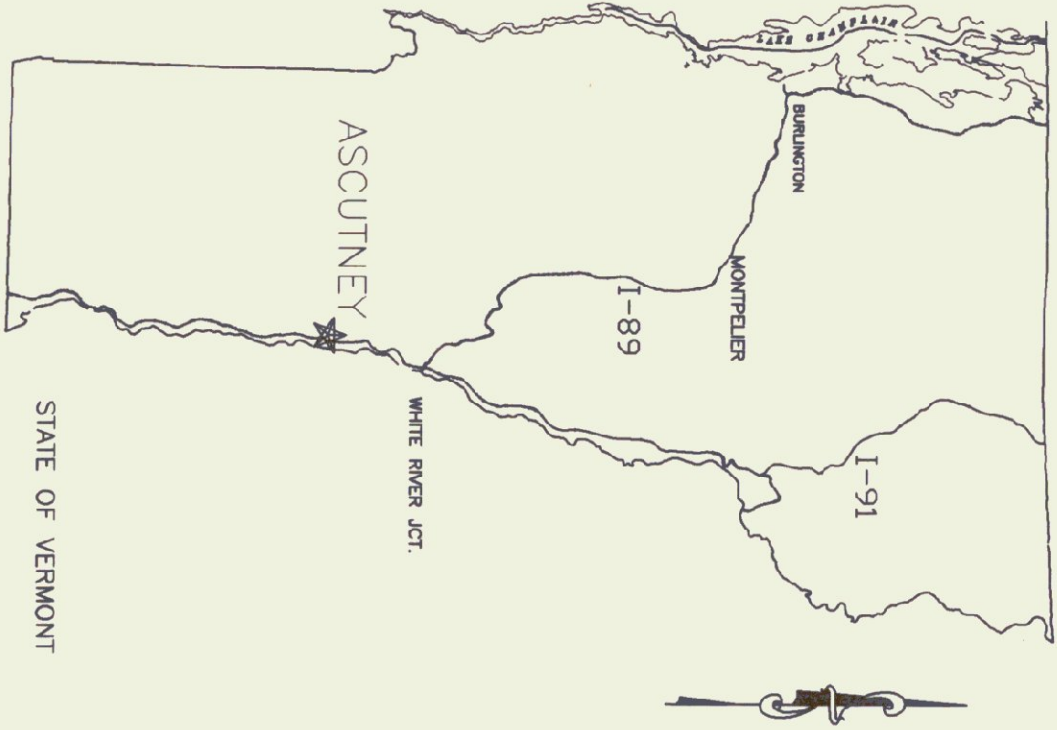
SECTION A
 1/4" = 1'-0"



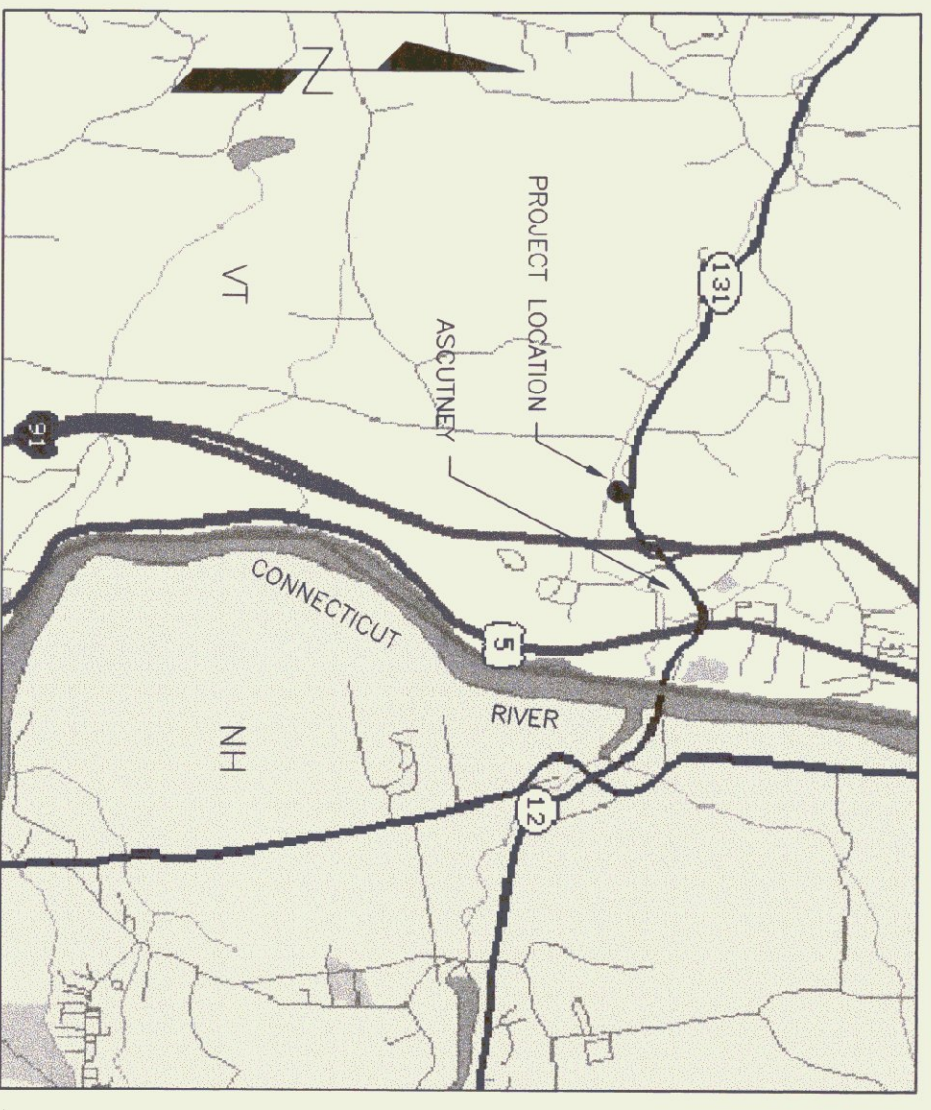
SECTION B
 1/4" = 1'-0"

ACCESS TO ATTIC SPACE MAY BE MADE BY REMOVING A PIECE OF THE Gypsum BOARD ABOVE PATCH THE HOLE TO MATCH THE EXISTING OR TRIM THE OPENING WITH 1x6 PO-LAR AND LAY THE COULDS OF INSULATION AND FINISHING PRESENTS A NEAT AND FINISHED APPEARANCE THE OPENING SHALL BE LOCATED IN THE FIELD BY THE ENGINEER AND THE CONTRACTOR.

STATE LOCATION



LOCATION MAP



ASCUTNEY - A.O.T. GARAGE
 HEATING
 NEW PLAN & SECTIONS



STATE OF VERMONT
 Department of Buildings & General Services
 Agency of Administration
 Montpelier, Vermont

SCALE: AS NOTED
 DATE: APRIL 30, 1999
 DRAWN BY: R. PRATT
 APPR. BY:

REVISIONS

ASCUTNEY
 HEATING

PLAN & SECTIONS
 M-1

1 OF 1