



to Marlboro VT 9 to Wilmington

322'

134'

213'

2.07 a+/-

123'

211'

96'

old VT 9



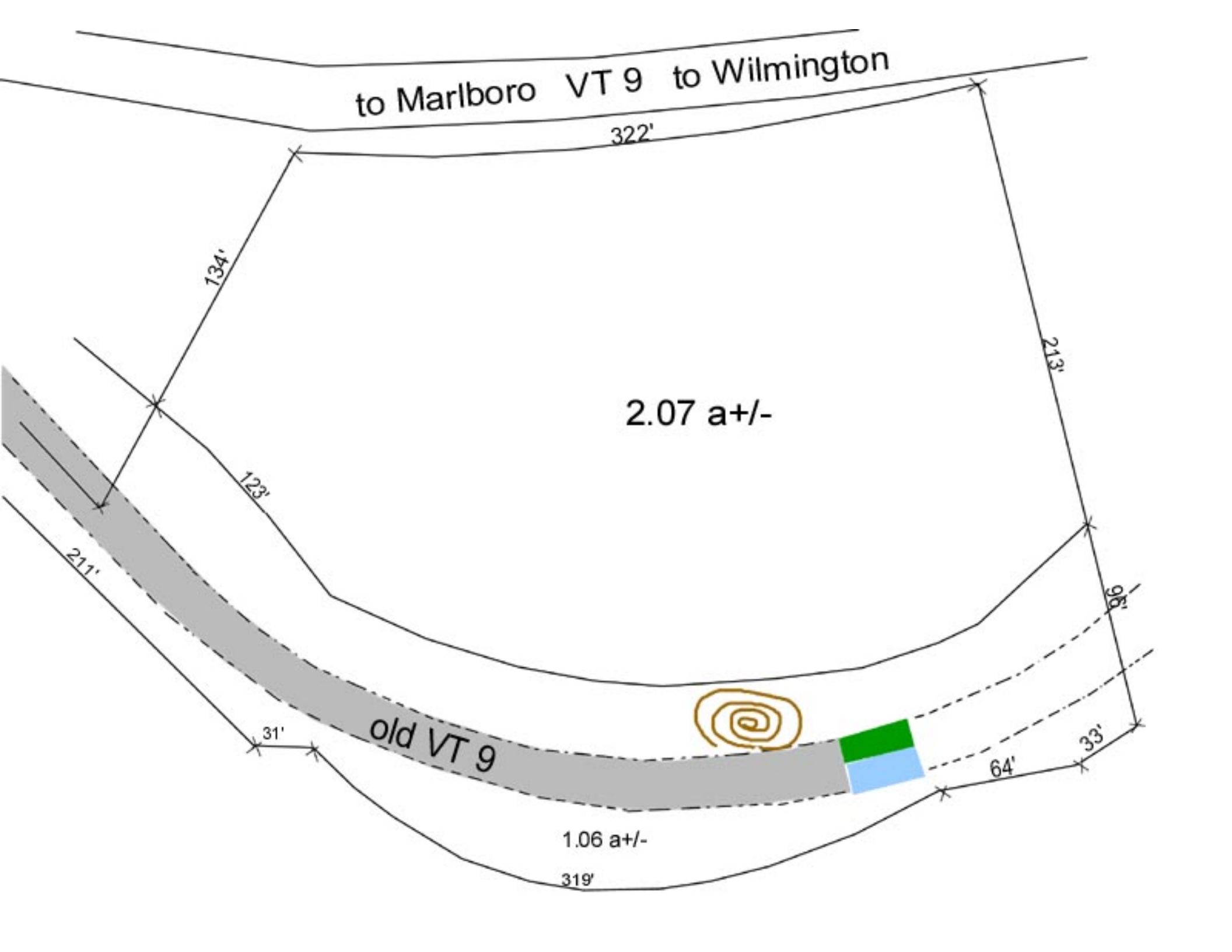
31'

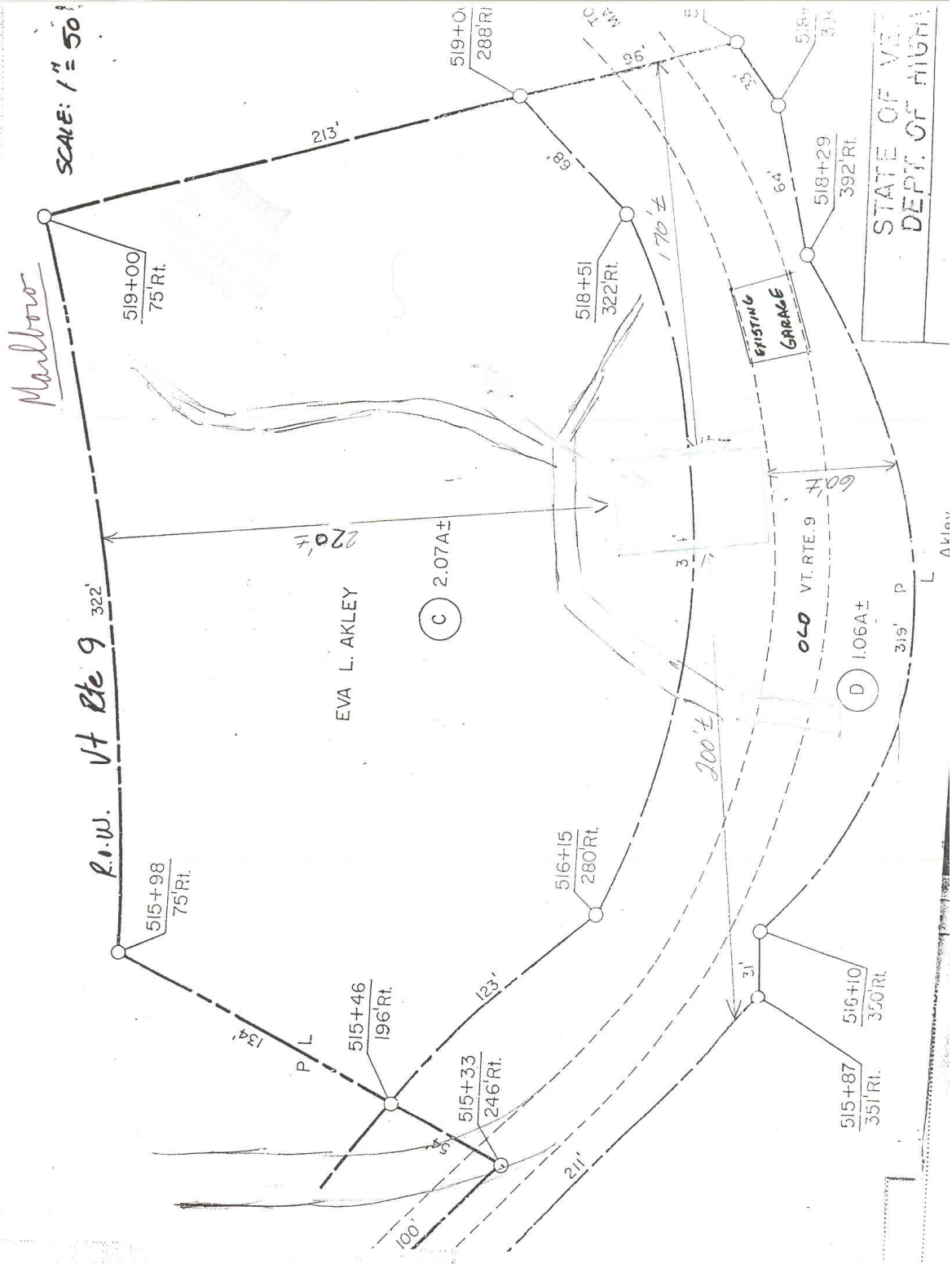
1.06 a+/-

64'

33'

319'







District 2  
VTrans  
Marlboro Garage

VTrans

Waste Management

Orange traffic barrel





JOHN CHADWICK, INC.  
**TRUCKING**  
WEST DOVER, VT  
802-464-8207



**FINELINE HOMES**  
MANUFACTURED HOUSING  
RTE 113 HINSDALE, N.H. 256-3156

**W W**  
**Building Supply**  
WILMINGTON, VT. NEWFANE, VT.

  
**Jug Barn**  
Wilmington, VT

**U.S. MAIL**









ARMOR CAST  
1000 GALLONS



1000 GALLONS DIESEL

