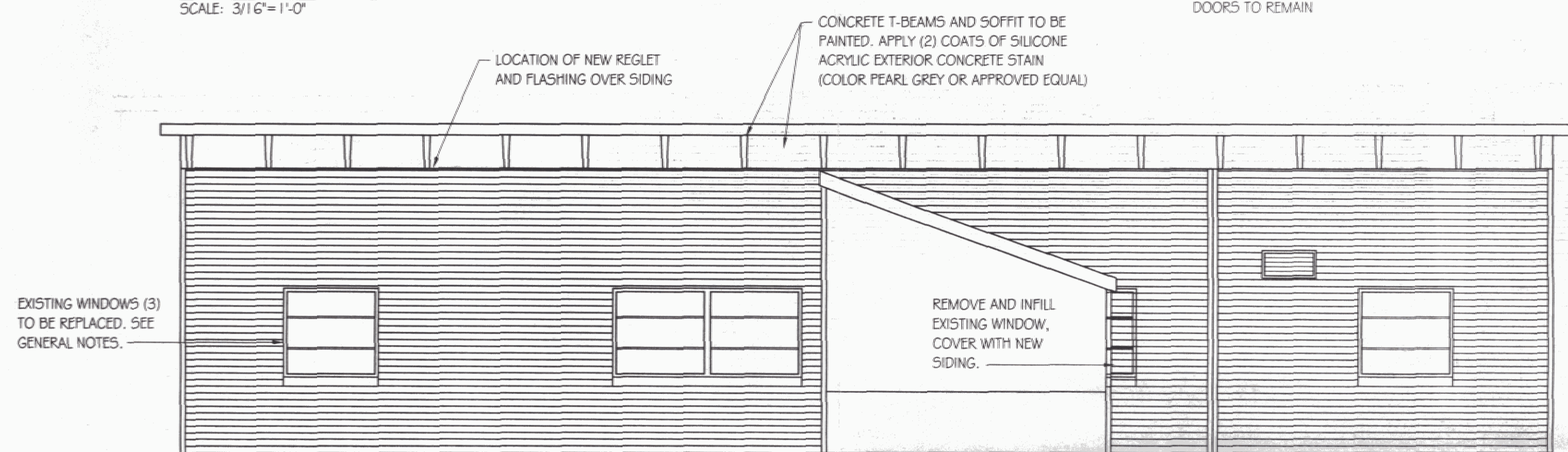
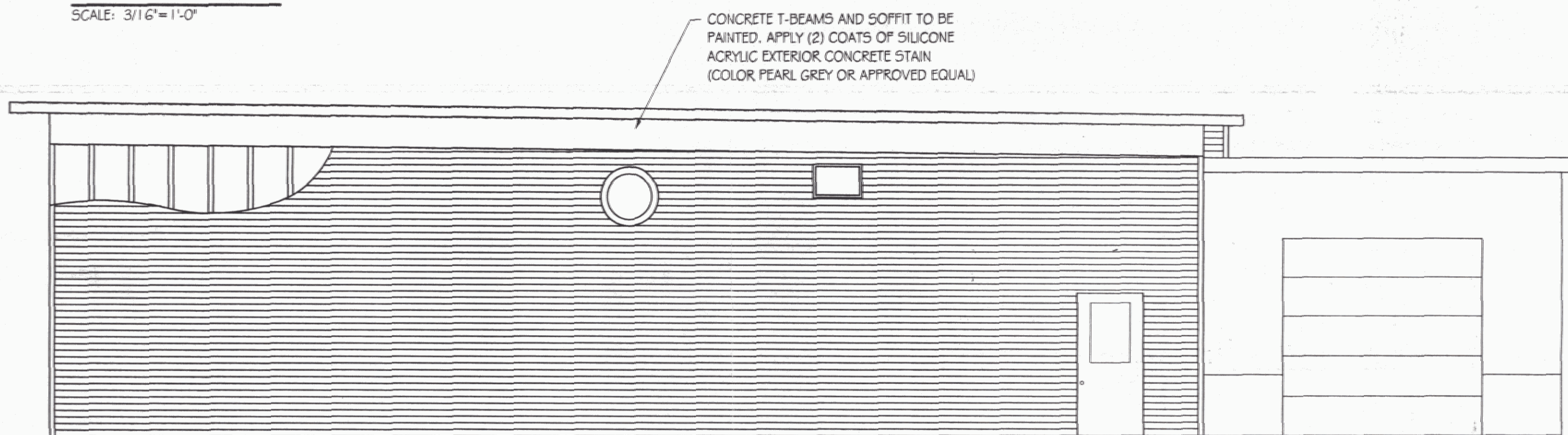


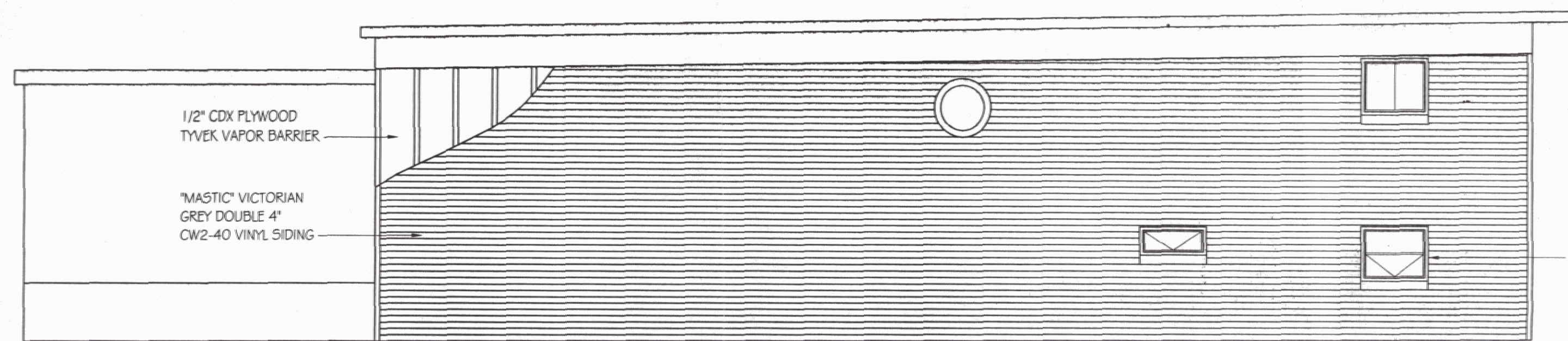
EAST ELEVATION
SCALE: 3/16"=1'-0"



WEST ELEVATION
SCALE: 3/16"=1'-0"



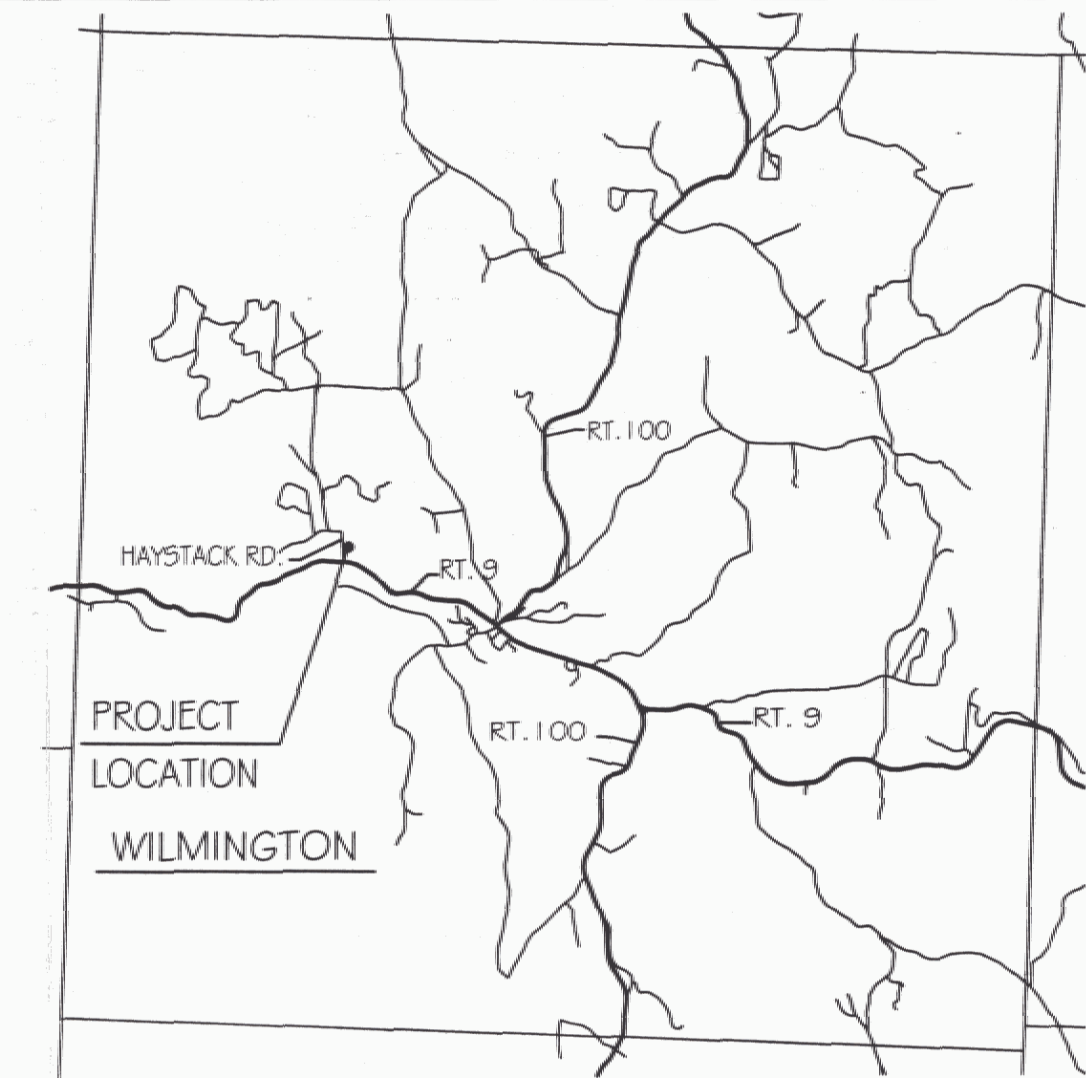
NORTH ELEVATION
SCALE: 3/16"=1'-0"



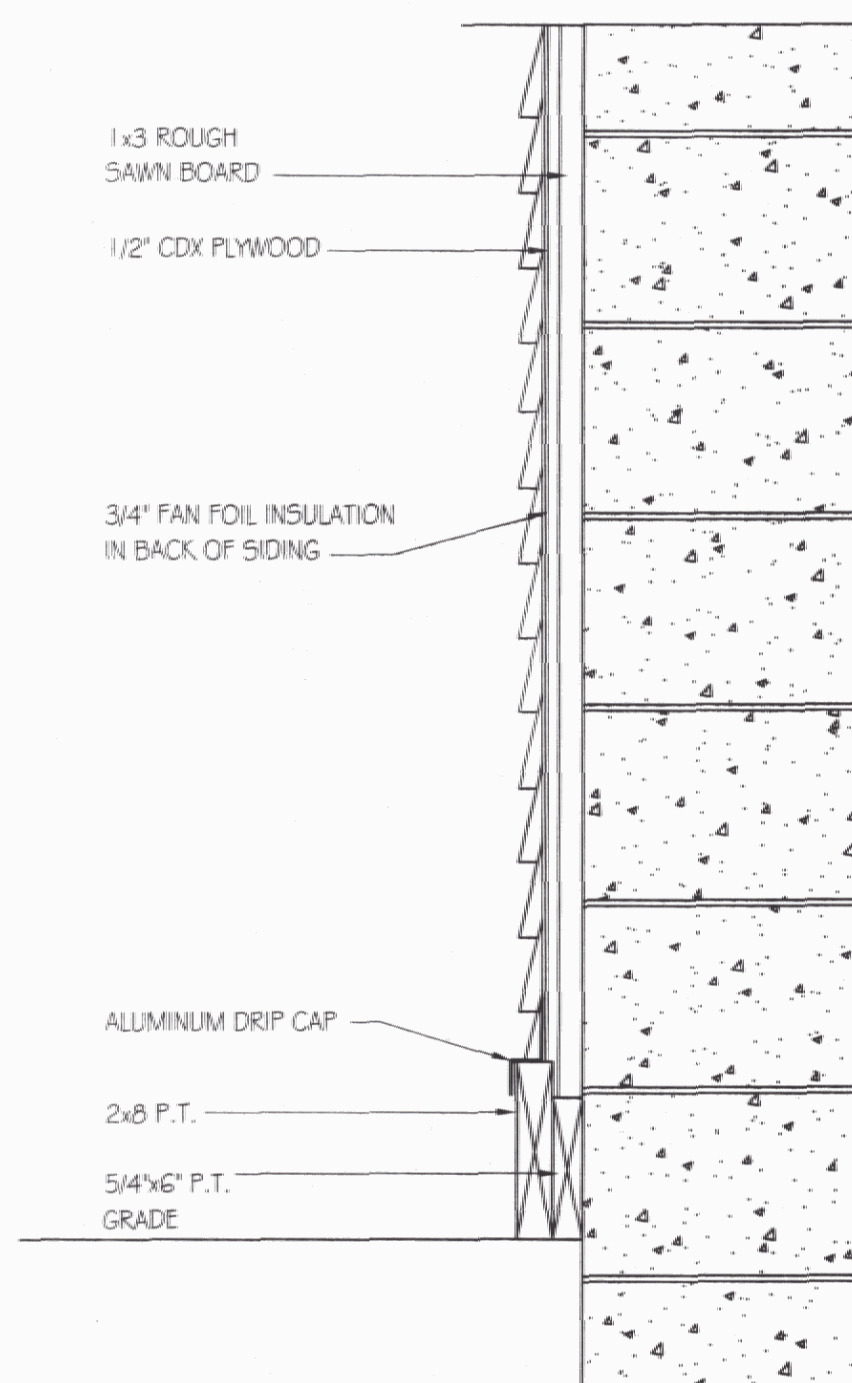
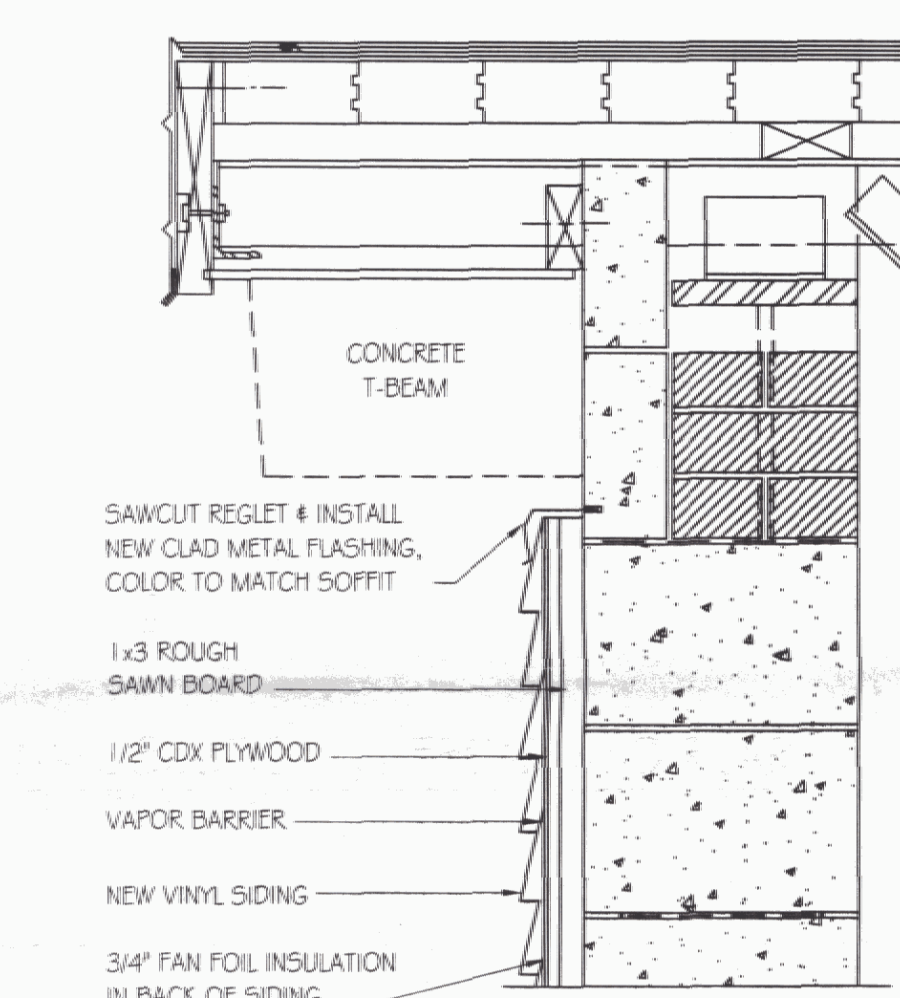
SOUTH ELEVATION
SCALE: 3/16"=1'-0"

NOTES:

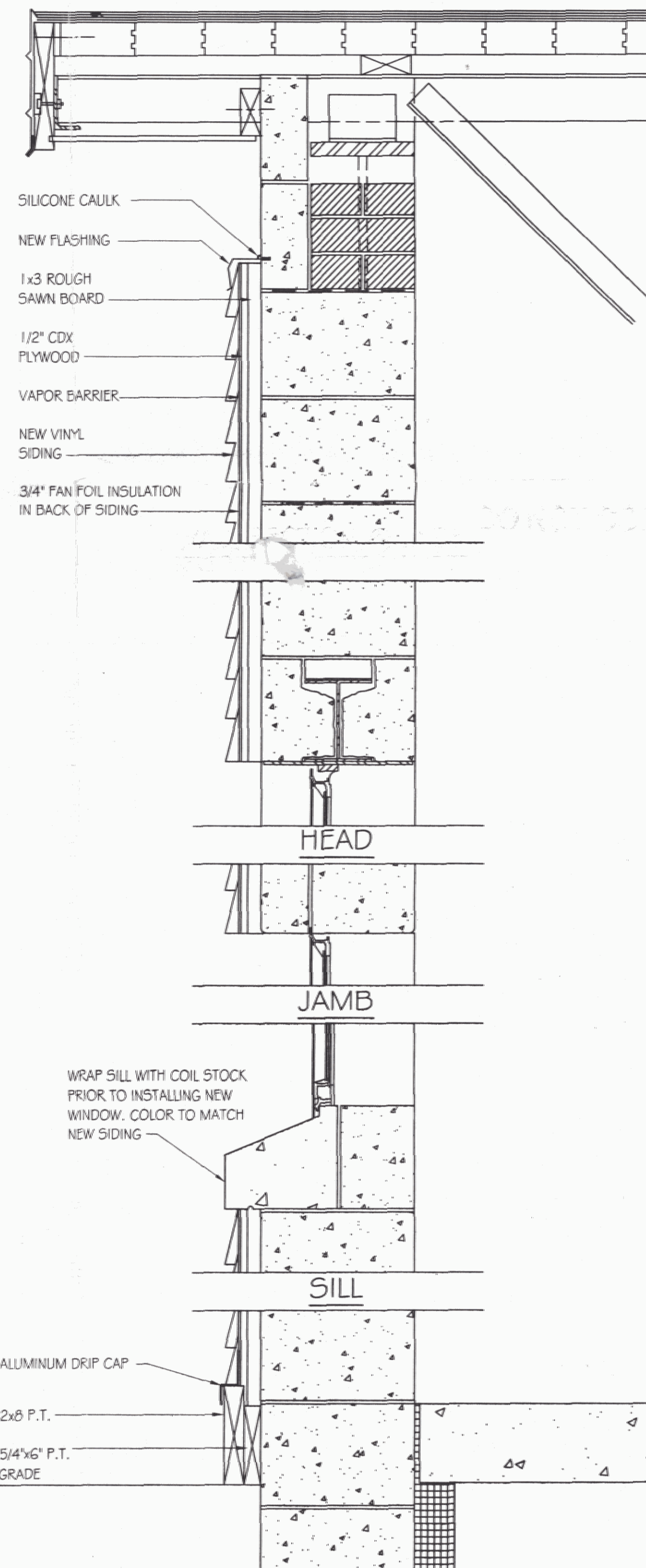
- CONTRACTOR TO FIELD VERIFY ALL DIMENSIONS AND EXISTING CONDITIONS.
- ENTIRE BUILDING EXCEPT ALONG OVERHEAD DOOR TO RECEIVE 1x3 ROUGH SAWN STRAPPING AT 2'-0" O.C. FASTEN WITH TAPCON SCREWS. 1" RIGID INSULATION BETWEEN STRAPPING. COVERED WITH 1/2" CDX PLYWOOD AND TYVEK VAPOR BARRIER. FAN FOIL INSULATION. NEW VINYL SIDING SHALL BE "MASTIC" DOUBLE 4" CW2-40, COLOR VICTORIAN GREY.
- AREA BETWEEN OVERHEAD DOORS TO RECEIVE NEW P.T. 5/4"x6" BOARDS WITH TAPERED JOINTS. FASTEN WITH 2" TAPCON SCREWS (SEE EAST ELEVATION).
- USE TYVEK AIR INFILTRATION BARRIER, 9'x100' ROLLS.
- REMOVE EXISTING WINDOWS AND REPLACE WITH "HARVEY" VINYL CLASSIC DOUBLE HUNG, COLOR WHITE. WRAP EXISTING SILL WITH COIL STOCK PRIOR TO INSTALLING NEW WINDOW. COLOR TO MATCH NEW SIDING.
- REMOVE AND REINSTALL EXISTING LIGHT FIXTURES, CONDUIT, SATELLITE DISH AND ANTENNAE AS NECESSARY TO ALLOW SIDING INSTALLATION. FOLLOW N.E.C. LATEST EDITION.
- ALL MATERIAL SHALL BE PROPERLY AND LEGALLY DISPOSED OF.



PROJECT LOCATION MAP



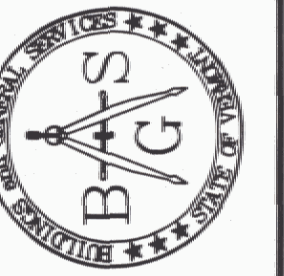
WALL SECTION @ FRONT AND REAR
SCALE: NOT TO SCALE



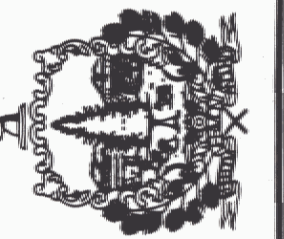
WALL SECTION @ ENDS
SCALE: NOT TO SCALE

DO NOT COPY

SET # 3



STATE OF VERMONT
Department of Buildings
and General Services
Agency of Administration
Montpelier, Vermont



WILMINGTON A.O.T. MAINTENANCE GARAGE

NEW SIDING
ELEVATIONS AND DETAILS

VERMONT
WILMINGTON

REVISIONS

SCALE:	AS NOTED
DATE:	MAY 2005
DRAWN BY:	T. DREW
APPR. BY:	R. BARRY

WILMINGTON A.O.T. MAINTENANCE GARAGE
NEW SIDING

ELEVATIONS AND
DETAILS

AI

1 OF 1