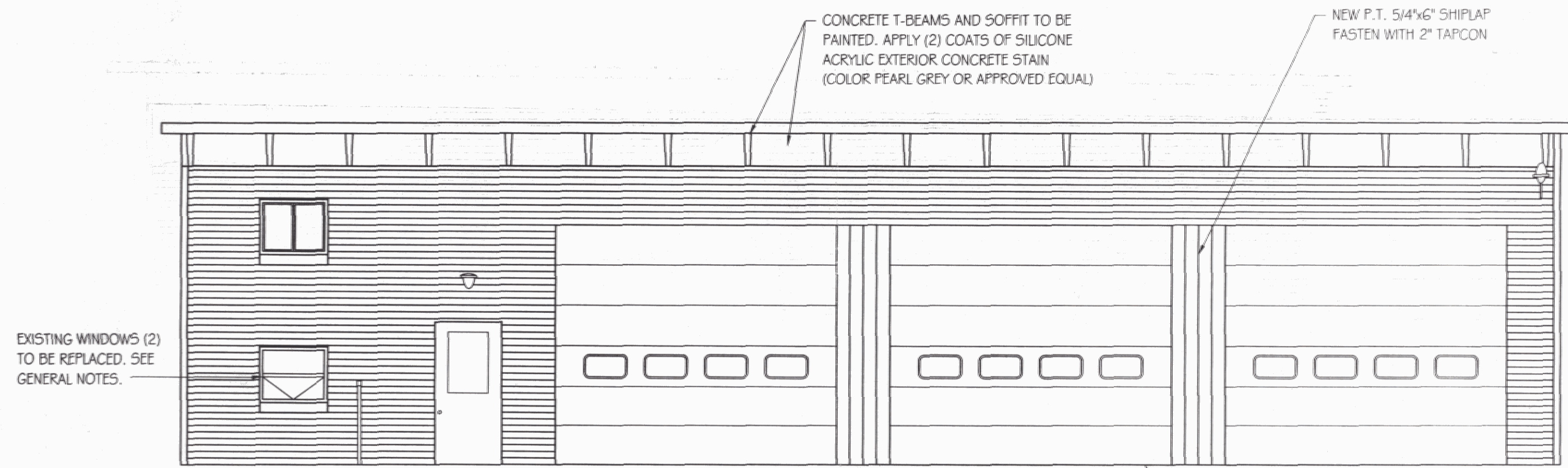


PROJECT LOCATION MAP

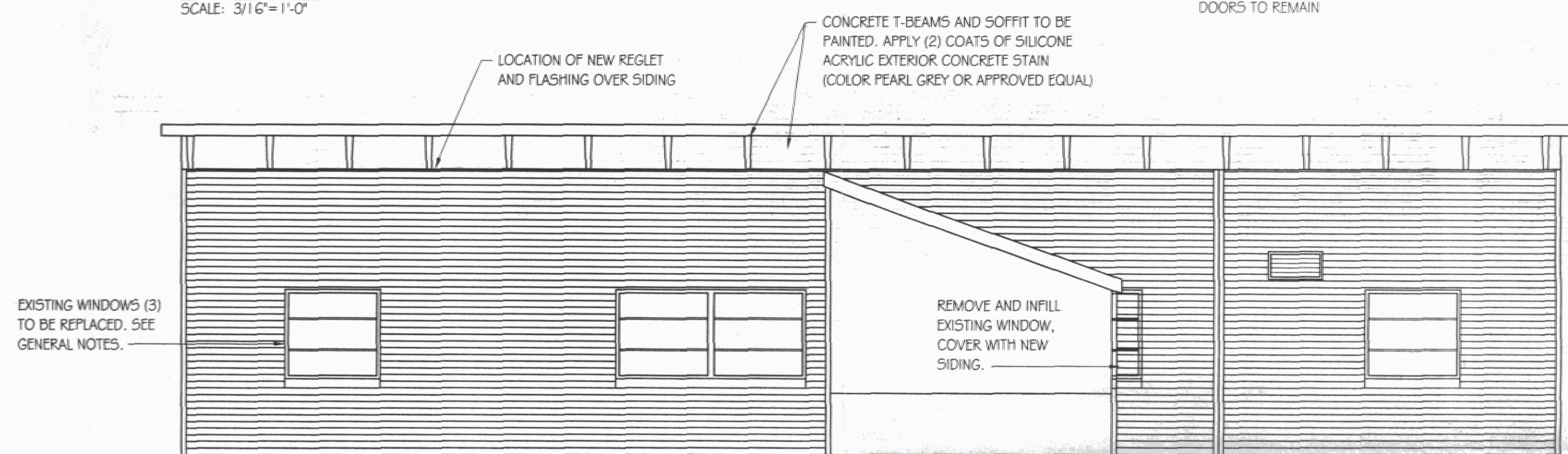
NOTES:

1. CONTRACTOR TO FIELD VERIFY ALL DIMENSIONS AND EXISTING CONDITIONS.
2. ENTIRE BUILDING EXCEPT ALONG OVERHEAD DOOR TO RECEIVE 1x3 ROUGH SAWN STRAPPING AT 2'-0" O.C. FASTEN WITH TAPCON SCREWS. 1" RIGID INSULATION BETWEEN STRAPPING, COVERED WITH 1/2" CDX PLYWOOD AND TYVEK VAPOR BARRIER, FAN FOIL INSULATION. NEW VINYL SIDING SHALL BE "MASTIC" DOUBLE 4" CW2-40, COLOR VICTORIAN GREY.
3. AREA BETWEEN OVERHEAD DOORS TO RECEIVE NEW P.T. 5/4"x6" BOARDS WITH TAPERED JOINTS. FASTEN WITH 2" TAPCON SCREWS (SEE EAST ELEVATION).
4. USE TYVEK AIR INFILTRATION BARRIER, 9'x100' ROLLS.
5. REMOVE EXISTING WINDOWS AND REPLACE WITH "HARVEY" VINYL CLASSIC DOUBLE HUNG, COLOR WHITE. WRAP EXISTING SILL WITH COIL STOCK PRIOR TO INSTALLING NEW WINDOW. COLOR TO MATCH NEW SIDING.
6. REMOVE AND REINSTALL EXISTING LIGHT FIXTURES, CONDUIT, SATELLITE DISH AND ANTENNAE AS NECESSARY TO ALLOW SIDING INSTALLATION. FOLLOW N.E.C. LATEST EDITION.
7. ALL MATERIAL SHALL BE PROPERLY AND LEGALLY DISPOSED OF.



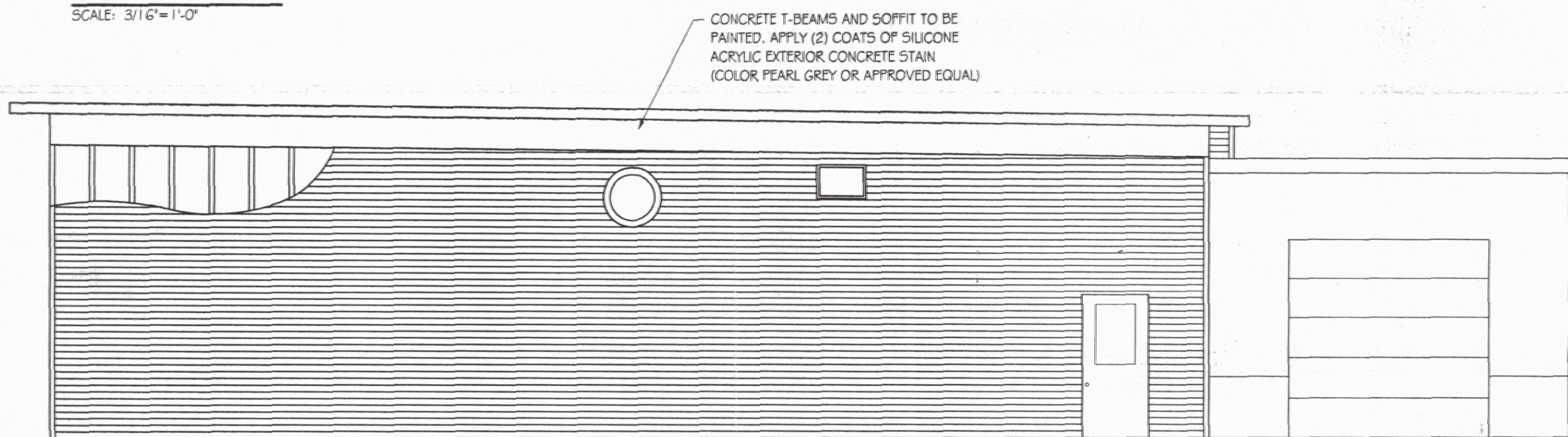
EAST ELEVATION

SCALE: 3/16"=1'-0"



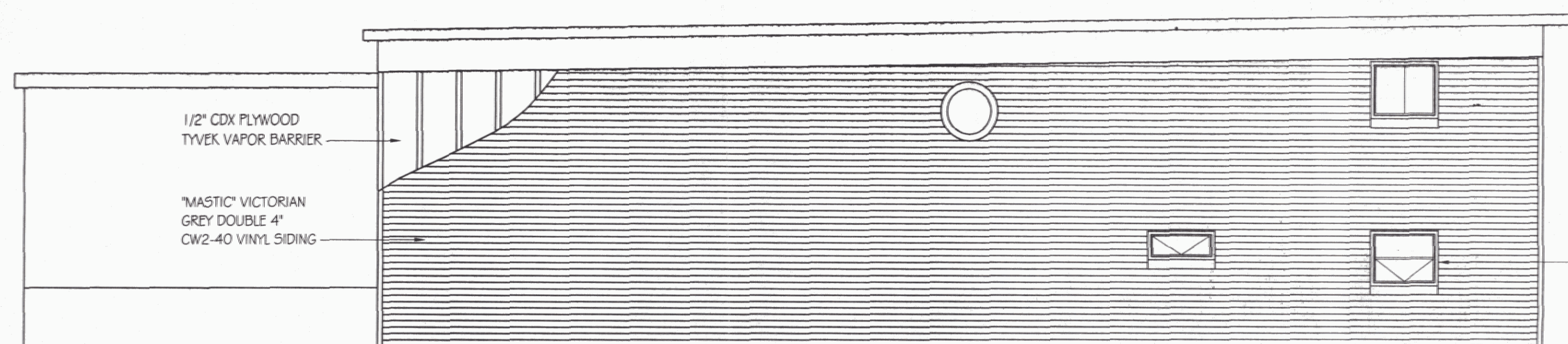
WEST ELEVATION

SCALE: 3/16"=1'-0"



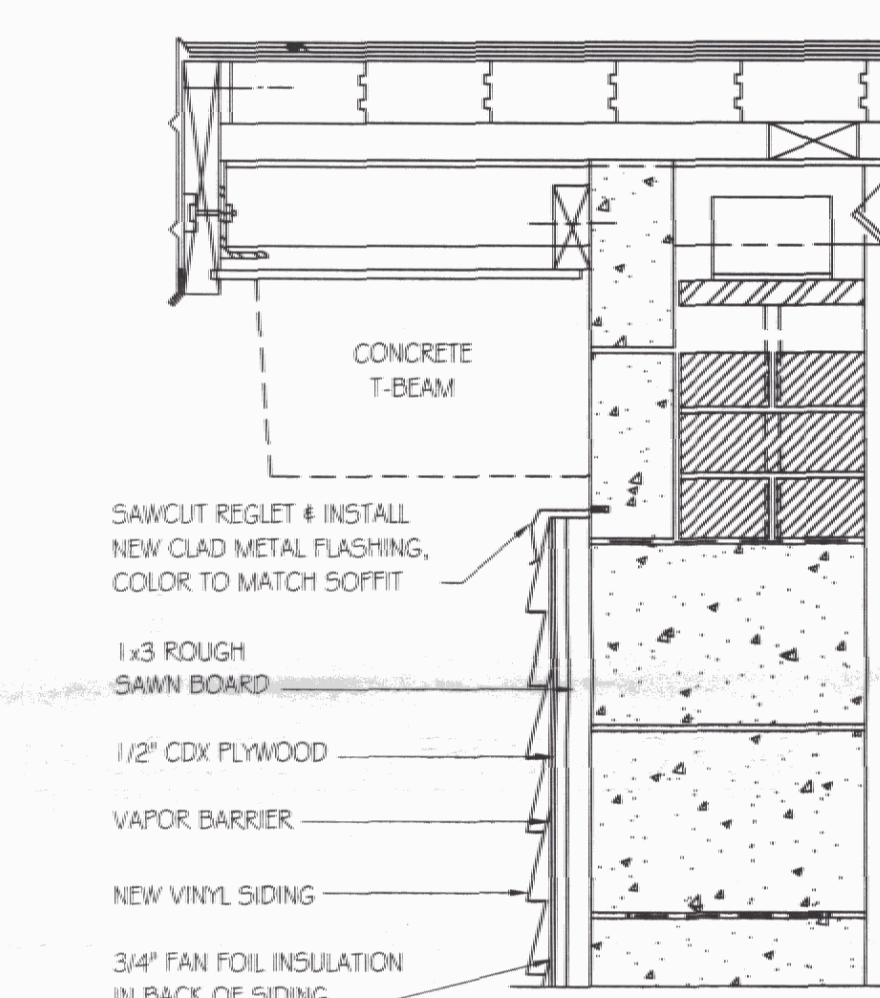
NORTH ELEVATION

SCALE: 3/16"=1'-0"



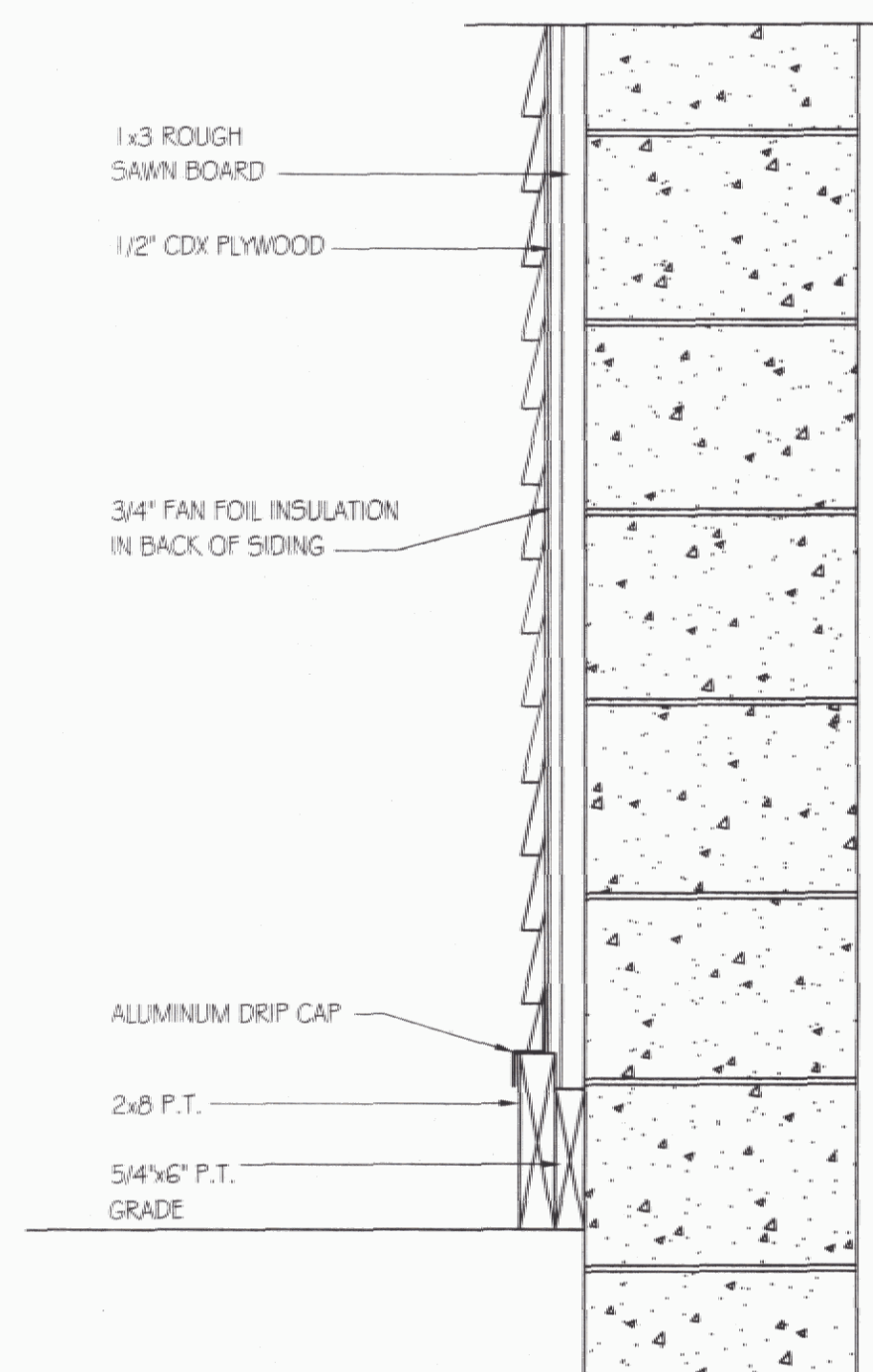
SOUTH ELEVATION

SCALE: 3/16"=1'-0"



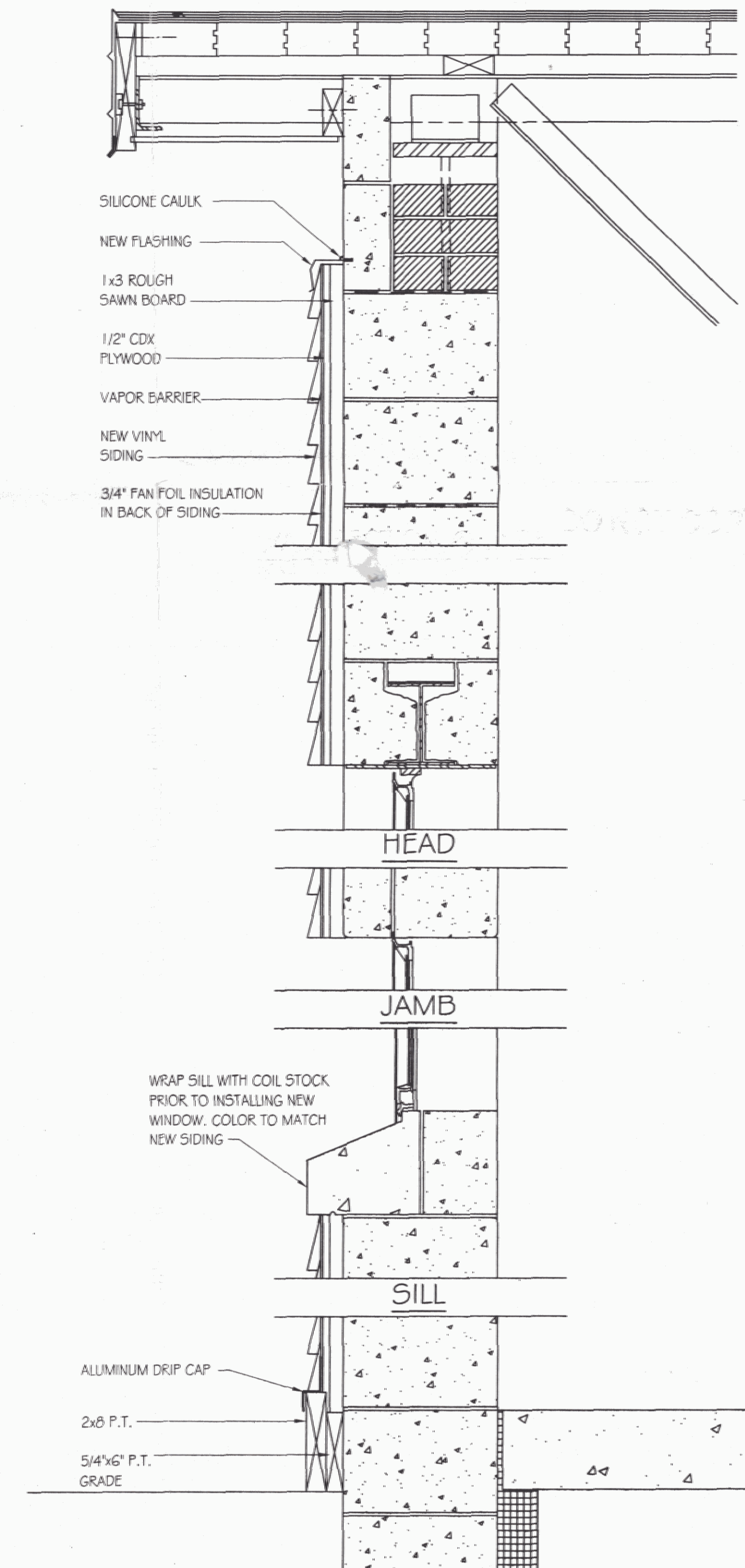
WALL SECTION @ FRONT AND REAR

SCALE: NOT TO SCALE



WALL SECTION @ ENDS

SCALE: NOT TO SCALE



DO NOT COPY

SET # 3

WILMINGTON A.O.T. MAINTENANCE GARAGE
NEW SIDING

ELEVATIONS AND
DETAILS

1

OF 1