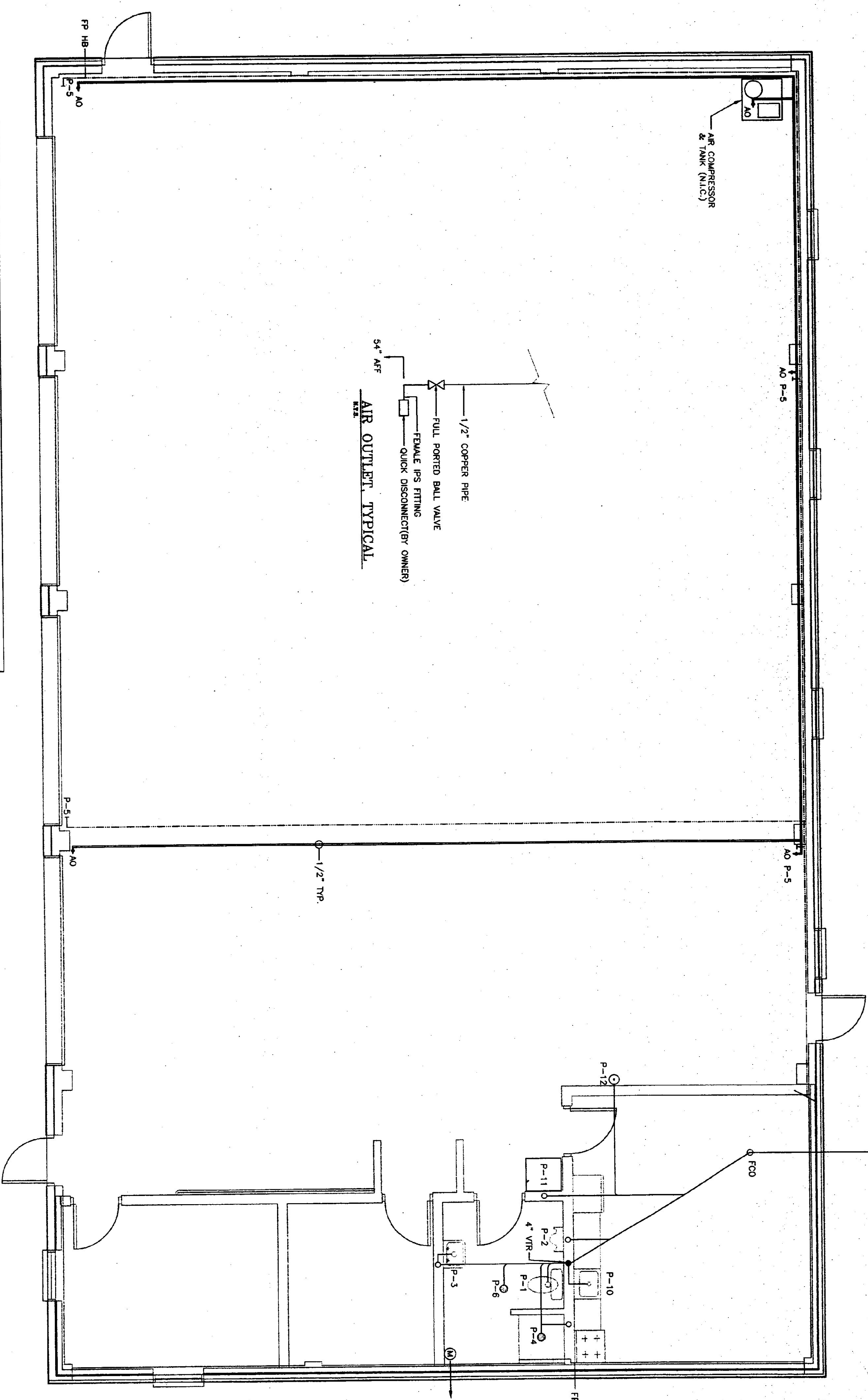


SEE SH C-1 FOR CONTINUATION



SYMBOL	FIXTURE	DESCRIPTION	NOTES	DNM	VENT	COLD	HOT
P-1	TOILET	AMERICAN STANDARD TOILET # 2184 100 WHITE VITREOUS CHINA, HANDBICAP, FLOOR MOUNT, TANK TYPE, PRESSURE ASSIGNED, ELONGATED, WATERSAVER, SPHON LET ACTION CLOSE COUPLED, 18" HIGH SEAT TO BE ELONGATED, OPEN FRONT WITH BOLT CAPS, PROVIDE SUPPLY STOP.		4"	4"	1/2"	-
P-2	URINAL	AMERICAN STANDARD WASHBROOM # 6501010, 3/4" TOP SPUD, WHITE VITREOUS CHINA, WALL HUNG, WASH OUT URINAL, WITH SLOAN ROVAL 186 FLUSH VALVE & COMBINER CARRIER.	MOUNT WITH RIM @ 17" A.F.F.	1/2"	1/2"	1/2"	1/2"
P-3	LAVATORY	AMERICAN STANDARD TOILET # 2021028 WALL HUNG, WHITE VITREOUS CHINA, FRONT OVERFLOW, CENTER SPUD, 15" HIGH SEAT, 18" HIGH SEAT, AMERICAN STANDARD RELIANT # 2385000.	MOUNT WITH RIM @ 34" A.F.F.	1/2"	1/2"	1/2"	1/2"
P-4	SHOWER	FIBERGLASS, 36" x 36" RIBBED WOOD, 414, WHITE, SCREENED OVER, SINGLE LEVER CONTROL, PRESSURE BALANCED WITH SCREENER STOP, AMERICAN STANDARD RELIANT # 1485501, PROVIDE A CHROME STRAINER AND P-TRAP.	MOUNT @ 54" A.F.F.	2"	1-1/2"	1/2"	1/2"
P-5	HOSE BIBB	WATTS SR-1 W/SS-1 VACUUM BREAKER		-	-	-	1/2"
P-6	FLOOR DRAIN	SLOTTED ROUND COVER, PAIN SHALL DISCHARGE THROUGH A P-TRAP, OUTLET OF P-TRAP SHALL HAVE A TWO INCH DRAIN WITH INTERNAL FLOOR CLEANOUT.	PROVIDE BOTTLE W/ FROTHING SOAP AT LAV.	2"	-	-	-
P-7	WATER HEATER	30 GAL. ENERGY SAVING WITH 2" FOAM INSULATION, 20 GPM RECOVERY AT 80 TEMP. RISE, BROODFORD-WHITE MODEL W1-S88 OR APPROVED EQUAL, PROVIDED BY WELL CONTRACTOR	PROVIDE P&T RELIEF VALVE.	-	-	3/4"	3/4"
P-8	PRESSURE TANK	SUPERSTOR SS-40, 40 GALLON TANK, 175 GALLON RECOVERY @ 140°F.	PROVIDE P&T RELIEF VALVE & VACUUM BREAKER	-	-	3/4"	3/4"
P-9	STORAGE TANK	ELKAY DR-2222-10 STAINLESS STEEL SINK, AMERICAN STANDARD RELIANT # 4285401 FACET WITH SPIN, DAD STRAINER.	MOUNT WITH RIM @ 34" A.F.F.	1-1/2"	1-1/2"	1/2"	1/2"
P-10	SINK	ELKAY DR-2222-10 STAINLESS STEEL SINK, AMERICAN STANDARD RELIANT # 4285401 FACET WITH SPIN, DAD STRAINER.		1-1/2"	1-1/2"	1/2"	1/2"
P-11	LAVATORY	FAT L-1 WALL HUNG, W/STRAINER & PLUGS, FAUCET: AMERICAN STANDARD RELIANT # 2385000.		1-1/2"	1-1/2"	1/2"	1/2"
P-12	TOB	CARBON EQUIPMENT #01814 STAINLESS STEEL BOWL WITH WALL MOUNTING BRACKET.		1-1/2"	1-1/2"	1/2"	1/2"
P-13	LIMITED AREA SPRINKLER	INTERMEDIATE TEMPERATURE CLASSIFICATION (175-225) COLOR BRONZE WITH FRANGIBLE ELEMENT		-	-	3/4"	-
⊗	CLEANOUTS	AS INDICATED OR REQUIRED BY CODE, CLEANOUTS SAME SIZE AS PIPE, FLOOR CLEANOUTS TO BE SET FLUSH W/FLOOR, DOWN MODEL 1 OR APPROX. EQUAL, DOWN MODEL WILL CO. 3 SHALL BE DOWN MODEL 2-1/2 OR APPROX. EQUAL.		-	-	-	-

FLOOR PLAN

SCALE: 1/4" = 1'-0"

