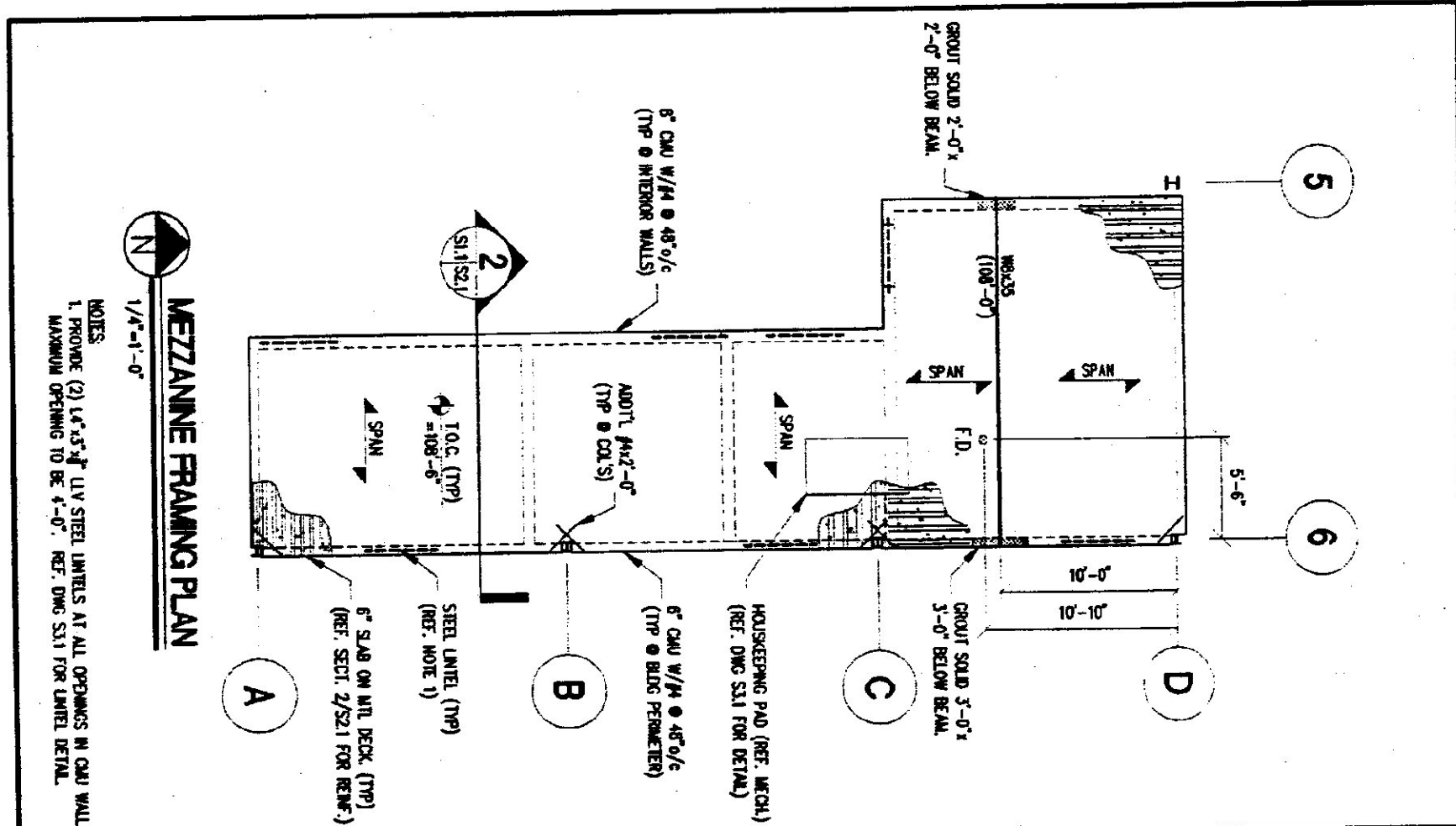


FOOTING SCHEDULE

MARK	SET (FOUNDATION) / OPEN (REINFORCING BOLT, UNO)	WALL (FOOTING) / BOLT (REINFORCING BOLT, UNO)
F-1	3'-3 1/2'-0"	12" x 12" x 6' E.A. WALL
F-2	4'-3 1/2'-0"	12" x 12" x 6' E.A. WALL

- FOUNDATION PLAN**
1/4" = 1'-0"
- NOTES:**
1. CONCRETE SLAB-ON-GRADE SHALL BE 6" THICK AND REINFORCED WITH #4 BARS @ 16" O.C. (TOP), UNO.
 2. TOP OF CONCRETE SLAB ELEVATION SHALL BE 100'-0" (UNO).
 3. BOTTOM OF FOOTING ELEVATIONS ARE NOTED ON PLAN.
 4. ALL COLLARS, PERS AND WALLS SHALL BE CENTERED ON FOOTINGS, (UNO).
 5. ALL ANCHOR BOLTS SHALL BE C-90 HOT-DIPPED GALVANIZED.
 6. BOTTOM OF COLUMN BASE PLATE ELEVATIONS TO BE 104'-1 1/2" (UNO) (REF. SECT. 6/S2.2)
 7. REFER TO DRAWING S01 FOR GENERAL NOTES, ABBREVIATIONS & STANDARD SYMBOLS.



No.	DATE	REVISION
0	10/12/01	ISSUED FOR CONSTRUCTION
1	2/4/02	INCORPORATED OWNER COMMENTS



STATE OF VERMONT
READSBORO HIGHWAY GARAGE PROJECT
READSBORO, VERMONT

Hallam Engineering
A Division of Hallam Associates, Inc.
60 Ferris St., Suite 300
So. Burlington, Vermont 05403
(802) 658-4891

The Design Studio of
LineSync Architecture
14 Castle Hill Wilmington Vermont 05363 9745 USA
v.802.464.2526 / hc.2428 www.LineSync.com

FOUNDATION PLAN

SCALE	DATE	REVISION
AS NOTED	10/12/01	1

S11