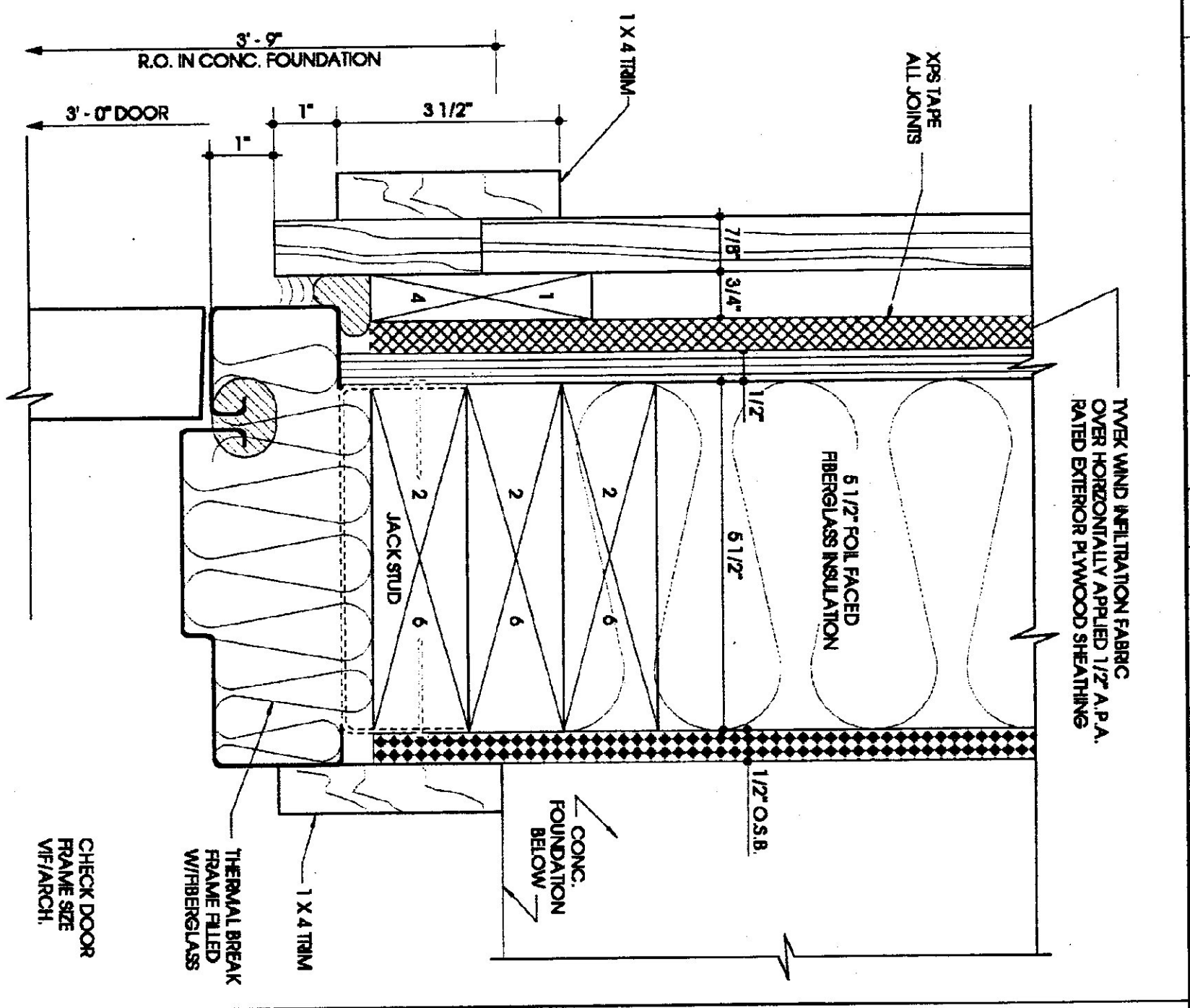
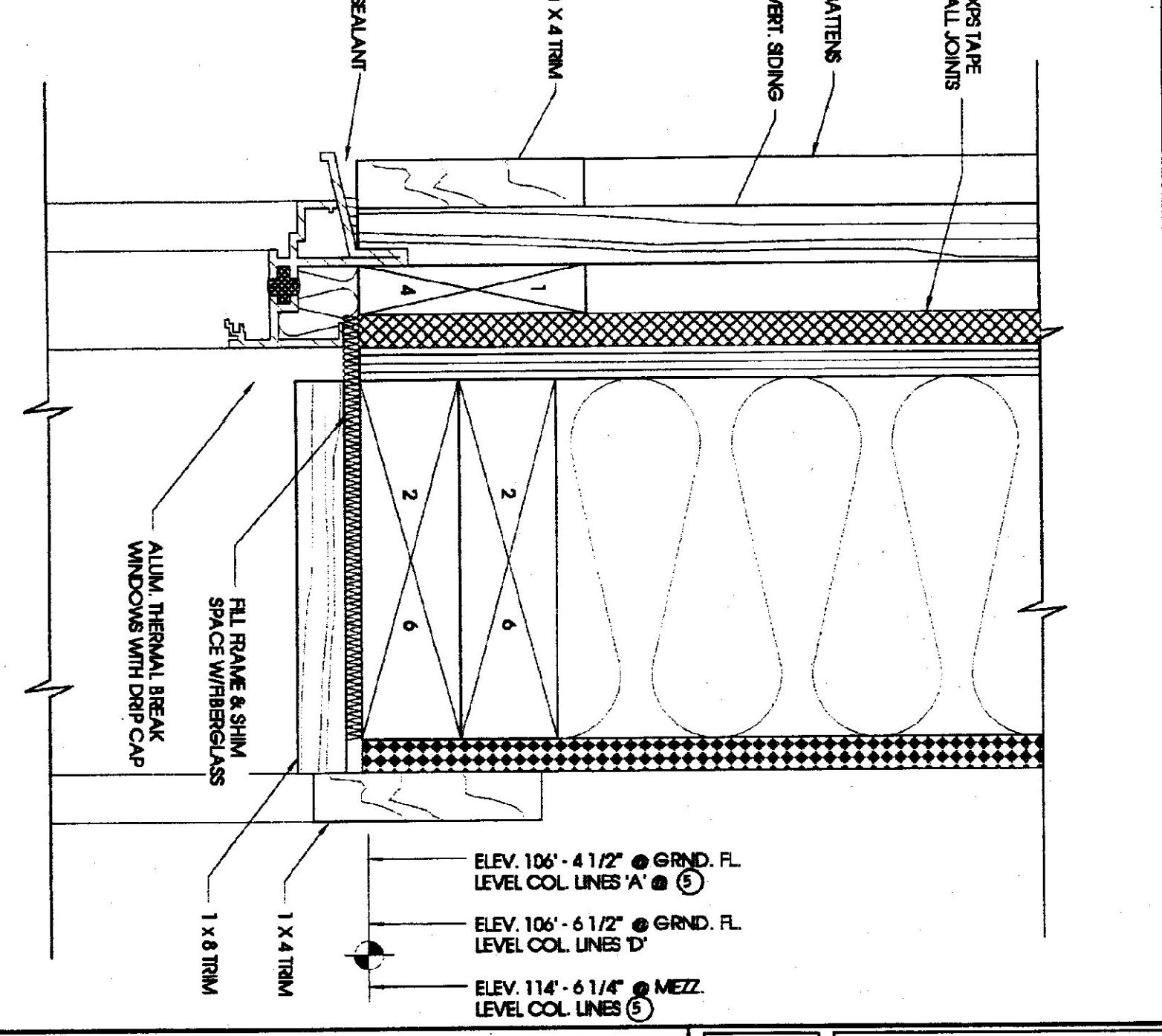


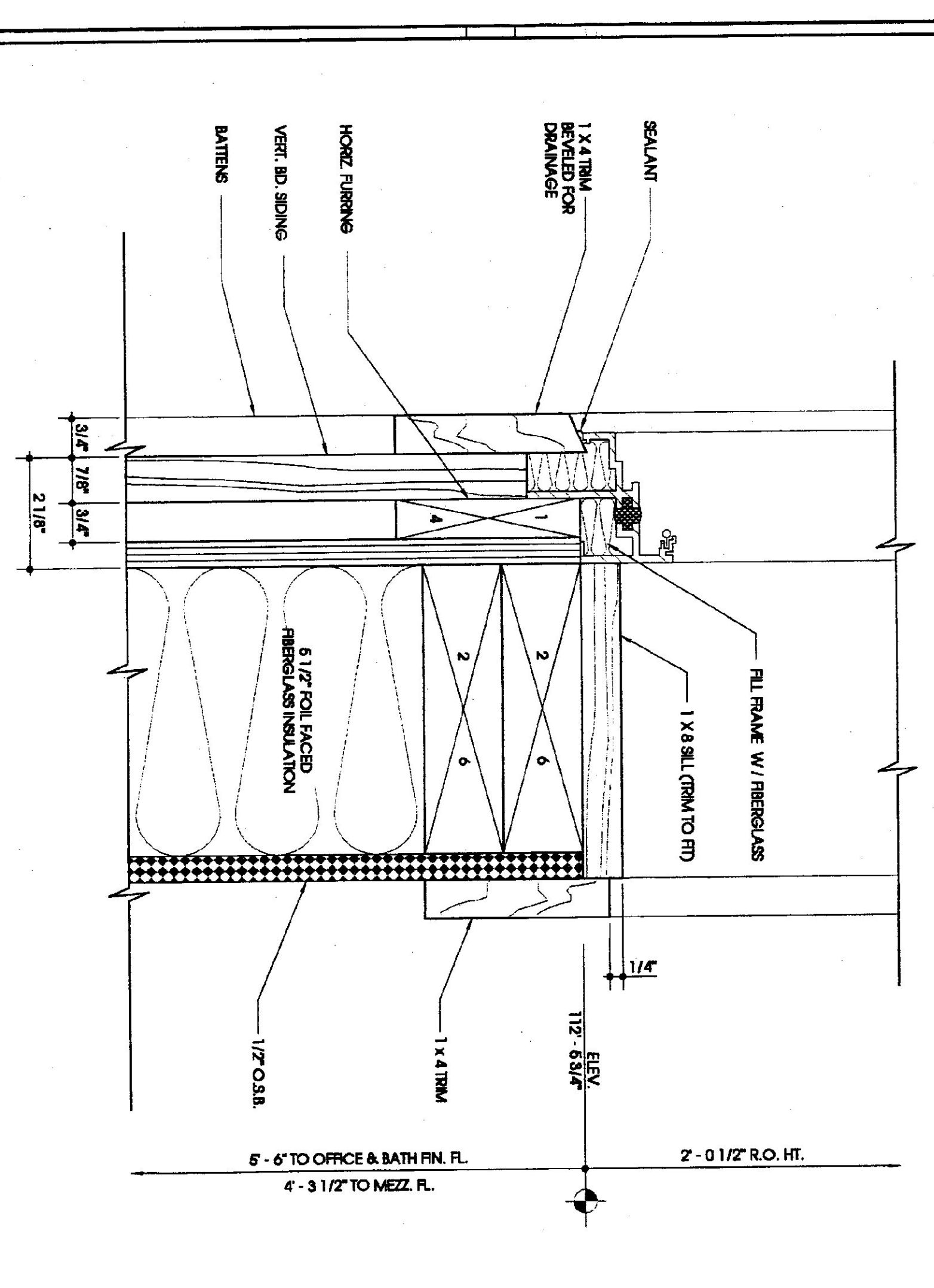
1  
TYPICAL WINDOW / DOOR HEAD @ 4" BLOCK  
HALF SCALE  
M.P. 5



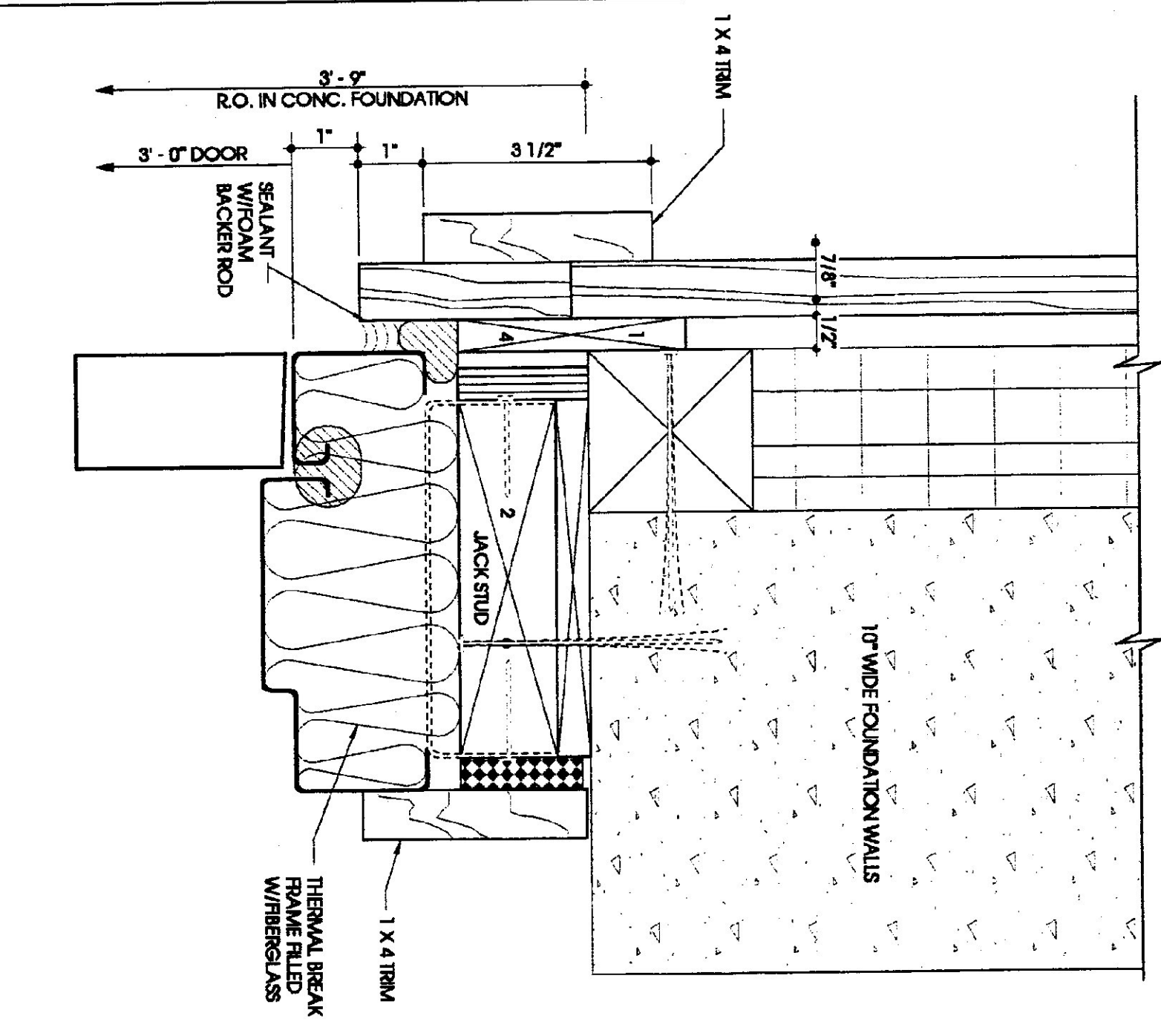
2  
DOOR JAMB ABOVE FOUNDATION  
HALF SCALE  
M.P. 5



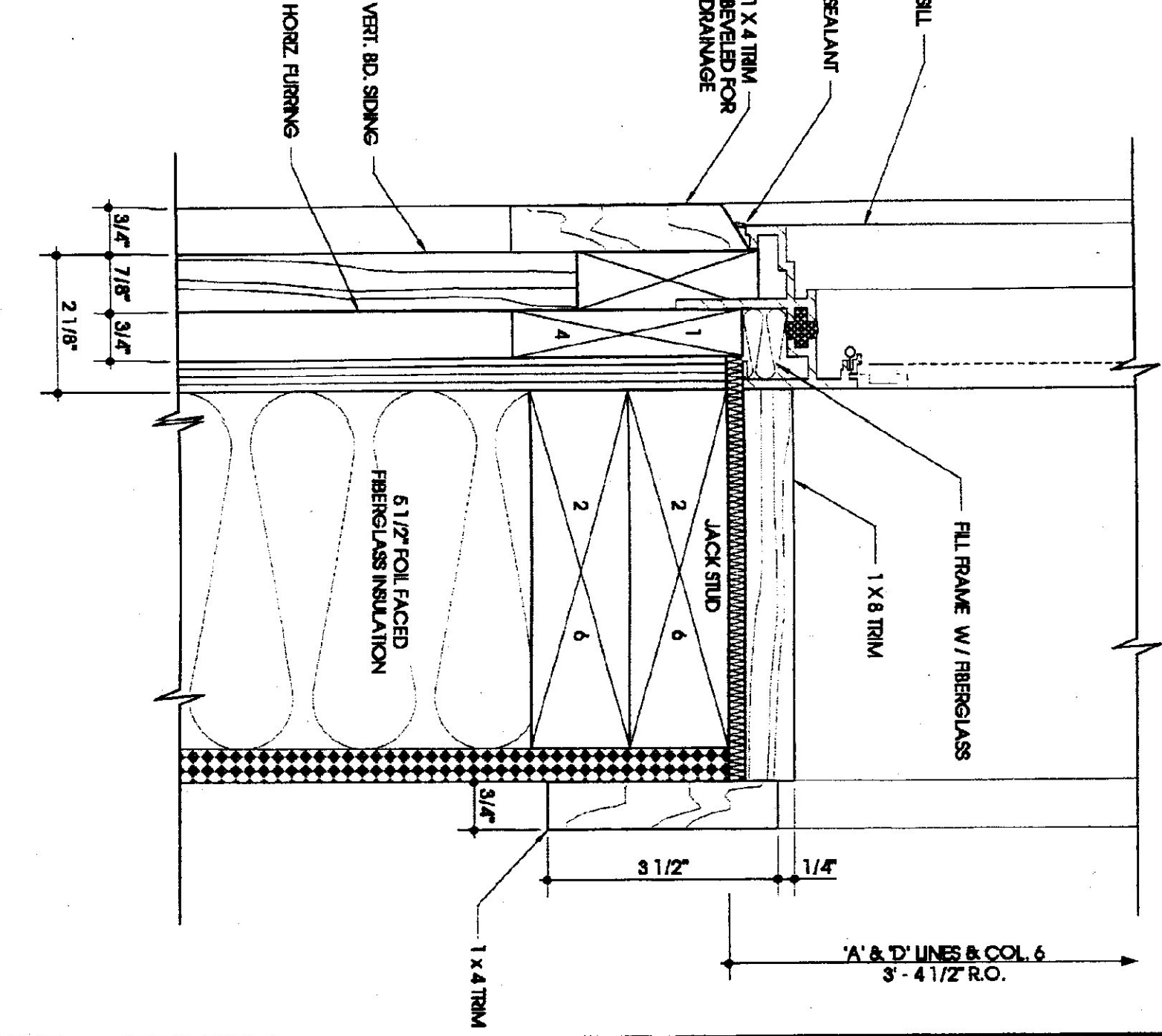
3  
TYPICAL WINDOW HEAD  
HALF SCALE  
M.P. 5



4  
WINDOW SILL @ MEZZ. LEVEL & REAR WALL  
HALF SCALE  
M.P. 5



5  
DOOR JAMB @ FOUNDATION WALL  
HALF SCALE  
M.P. 5



6  
TYPICAL WINDOW JAMB  
HALF SCALE  
M.P. 5

The Design Studio of  
**Linesync Architecture**  
17 Corlies Hill, Whitehall, Vermont 05453 974.6 USA  
402.444.2255 / 424.2252  
www.linesync.com

- STATE HIGHWAY GARAGE GENERAL NOTES**
- PROJECT TO CONFORM TO LOCAL, STATE AND FEDERAL REQUIREMENTS.
  - CONTRACTOR SHALL VERIFY CONDITIONS AND DIMENSIONS IN FIELD PRIOR TO BEGAINING WORK.
  - ALL REPAIRING IN CONTACT WITH CONCRETE AND MASONRY TO BE REPAIR/REBUILT WITH WOOD.
  - COORDINATE ALL DRG WITH PROJECT MANUAL.
  - ARCHITECTURAL ELEVATION BUT LEFT REFERENCED TO 100'-0" DATUM AT THE TOP OF THE GARAGE BLK. THIS IS 5'-0" ABOVE THE FINISH FINISH ELEVATION OF 94'-0" PER C.
- PROJECT DRAWING LIST**
- CG11 BY PERMITS/ENERGY
  - C2 SITE PLAN
  - C3 LAYOUT PLAN
  - C4 ROAD PROFILE
  - C5,6,7 ROAD CROSS SECTIONS
  - C8,9 SITE DETAILS
  - C10,11 BERTIC VENTIL. DETAILS
- GARAGE & OPERON BY LINESYNC ARCHITECTURE**
- A11 SITE PLAN LOCATION MAP & REFERENCES
  - A22 ELEVATIONS
  - A31 1ST F.L. PLAN
  - A32 MEZZANINE/2ND F.L. PLAN, WINDOW/DOOR SCHEDULE
  - A41 INTERIOR ELEVATIONS
  - A42 INTERIOR ELEVATIONS & SECTIONS
  - A43 WALL SECTIONS & DETAILS
  - A44 DETAILS
  - A45 WINDOW & FT/FR DETAILS
- GARAGE STRUCTURAL BY BALMAIN ASSOCIATES**
- S01 GEN. STRUCT. NOTES & STANDARD DETAILS
  - S11 FOUNDATION PLAN
  - S12 ROOF TRUSS PLAN
  - S13 ROOF TRUSS DETAILS
  - S14 STANDARD STRUCTURAL DETAILS
  - S15 ELECTRICAL BY DISPENSE/ENERGY
  - S16 FIRST FLOOR PLAN (CONCLUDES MEZZ.)
  - S17 ELECTRICAL W/FR PLAN
  - S18 MEZZANINE/2ND FLOOR PLAN (CONCLUDES MEZZ.)
  - S19 MEZZANINE/2ND FLOOR PLAN (CONCLUDES MEZZ.)
  - S20 VENTILATION VENTIL. PLAN & DETAILS
- GARAGE MECHANICAL BY DEPT. OF STATE BLDGS**
- M1 GARAGE MECHANICAL PLAN
  - M2 GARAGE MECHANICAL PLAN (CONCLUDES MEZZ.)
  - M3 MECHANICAL PLAN (CONCLUDES MEZZ.)
  - M4 MECHANICAL PLAN (CONCLUDES MEZZ.)
  - M5 MECHANICAL PLAN (CONCLUDES MEZZ.)
  - M6 MECHANICAL PLAN (CONCLUDES MEZZ.)
  - M7 MECHANICAL PLAN (CONCLUDES MEZZ.)
  - M8 MECHANICAL PLAN (CONCLUDES MEZZ.)
  - M9 MECHANICAL PLAN (CONCLUDES MEZZ.)
  - M10 MECHANICAL PLAN (CONCLUDES MEZZ.)
  - M11 MECHANICAL PLAN (CONCLUDES MEZZ.)
  - M12 MECHANICAL PLAN (CONCLUDES MEZZ.)
  - M13 MECHANICAL PLAN (CONCLUDES MEZZ.)
  - M14 MECHANICAL PLAN (CONCLUDES MEZZ.)
  - M15 MECHANICAL PLAN (CONCLUDES MEZZ.)
  - M16 MECHANICAL PLAN (CONCLUDES MEZZ.)
  - M17 MECHANICAL PLAN (CONCLUDES MEZZ.)
  - M18 MECHANICAL PLAN (CONCLUDES MEZZ.)
  - M19 MECHANICAL PLAN (CONCLUDES MEZZ.)
  - M20 MECHANICAL PLAN (CONCLUDES MEZZ.)

NO.	DATE	REVISION	BY
1	20 NOV 01	ISSUED FOR STATE REVIEW	ALG
2	07 FEB 02	ISSUED FOR BID	ALG

**AGENCY OF TRANSPORTATION STORAGE FACILITY PROJECT**

**REVISIONS, VERMONT**

**DETAILS**

SCALE: 1/4" = 1'-0"

DATE: 17 JUNE 2001

PROJECT NUMBER: 0113

DESIGNER: ALG

CLIENT: VERMONT DEPARTMENT OF TRANSPORTATION

**ATSIF**  
**AGENCY OF TRANSPORTATION STORAGE FACILITY PROJECT**

**REVISIONS, VERMONT**

**DETAILS**

SCALE: 1/4" = 1'-0"

DATE: 17 JUNE 2001

PROJECT NUMBER: 0113

DESIGNER: ALG

CLIENT: VERMONT DEPARTMENT OF TRANSPORTATION