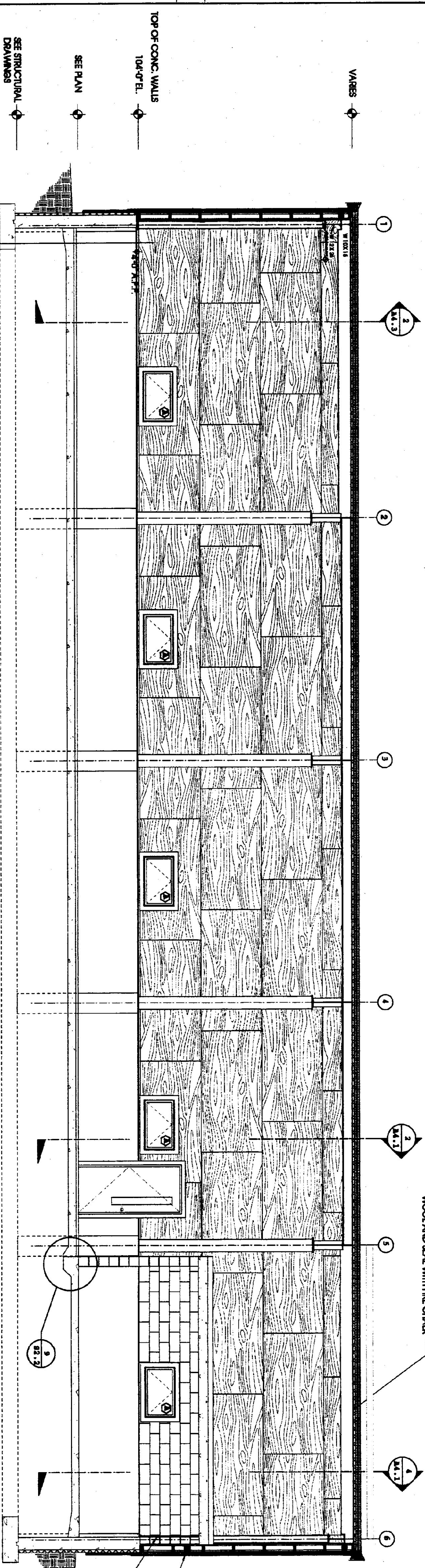


1  
1/4"=1'-0"  
24.2



2  
1/4"=1'-0"  
24.3

INTERIOR ELEVATION/SECTION (LOOKING SOUTH TOWARDS "A" COLUMN LINE)

INTERIOR ELEVATION/SECTION (LOOKING NORTH TOWARDS "D" COLUMN LINE)

**STATE HIGHWAY GARAGE GENERAL NOTES**

1. PROJECT TO CONFORM TO SPECIFICATIONS WITH THE NATIONAL ARCHITECTURAL ACADEMY AND THE NATIONAL INTERIOR DESIGN ASSOCIATION. ALL MATERIALS AND FINISHES TO BE USED SHALL BE APPROVED BY THE ARCHITECT AND THE CONTRACTOR SHALL BE RESPONSIBLE FOR OBTAINING ALL NECESSARY PERMITS AND APPROVALS FROM THE APPROPRIATE AGENCIES.
2. THE CONTRACTOR SHALL VERIFY CONDITIONS AND DIMENSIONS IN FIELD PRIOR TO CONSTRUCTION.
3. ALL FINISHES IN CONTACT WITH CONCRETE AND MASONRY TO BE PRESERVED TREATED WOOD.
4. COORDINATE ALL DRAWINGS WITH PROJECT MANUAL.
5. ARCHITECTURAL ELEVATION BUILDING REFERENCES IS PROVIDED TO THE INTERIOR DESIGNER'S ELEVATION OF 2007. USE C.I.

**PROJECT DRAWING LIST**

- C1 CIVIL BY DUPRENE-HERNIMY
- C2 SITE PLAN
- C3 LAYOUT PLAN
- C4.5/7 ROAD CROSS SECTIONS
- C8.9 SITE DETAILS
- C11.1, 11.2, 11.3 SITE DETAILS
- GARAGE & OFFICES BY LINSEY ARCHITECTURE
- A11 SITE PLAN, LOCATION MAP & REFERENCES
- A12 ELEVATIONS
- A21 IRT FLOOR PLAN
- A32 MEZZANINE/FLOOR PLAN WINDOW SCHEDULE
- A41 SECTION DETAILS
- A42 INTERIOR ELEVATIONS
- A43 INTERIOR ELEVATIONS & SECTIONS
- A44 WALL SECTIONS & DETAILS
- A45 WALL SECTIONS & DETAILS
- A46 DETAILS
- A47 WINDOW & FRAM DETAILS

GARAGE STRUCTURAL BY BALAM ASSOCIATES

- S01 GEN STRUCT NOTES & STANDARD DETAILS
- S11 FOUNDATION PLAN
- S12 STRUCTURAL SECTION & DETAILS
- S21 STANDARD STRUCTURAL DETAILS

ELECTRICAL BY DUPRENE-HERNIMY

- B01 ELECTRICAL SITE PLAN
- B11 FIRST FLOOR PLAN (INCLUDES MEZ)

GARAGE MECHANICAL BY DEPT OF STATE BLDGS

- M01 GARAGE MECHANICAL PLAN OVERLAYS
- BS1 A.O.T. 24" RETICULATED BLDG WATERLICK
- BS-1 A.O.T. 24" RETICULATED BLDG WATERLICK
- P-1 FLOOR PLAN & DETAILS
- V-1 VENTILATION SYSTEM PLAN & DETAILS

NO.	DATE	REVISIONS/ISSUES
1	20 NOV 01	ISSUED FOR STATE REVIEW
2	07 FEB 02	ISSUED FOR BID

**ATSP**  
AGENCY OF TRANSPORTATION  
STORAGE FACILITY PROJECT

REDACTED, VERMONT

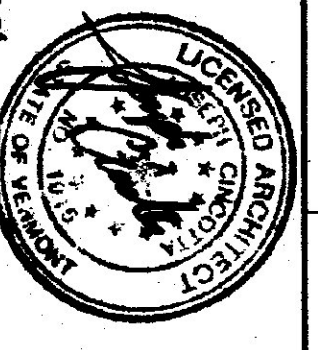
**INTERIOR ELEVATIONS**

17 JUNE 2001

0113

17 JUNE 2001

ATSP



The Design Studio of  
**Linesync Architecture**  
14 College Hill, Whitehall, Vermont 05453 9746 USA  
V.002.444.2535 / N.24253 www.Linesync.com