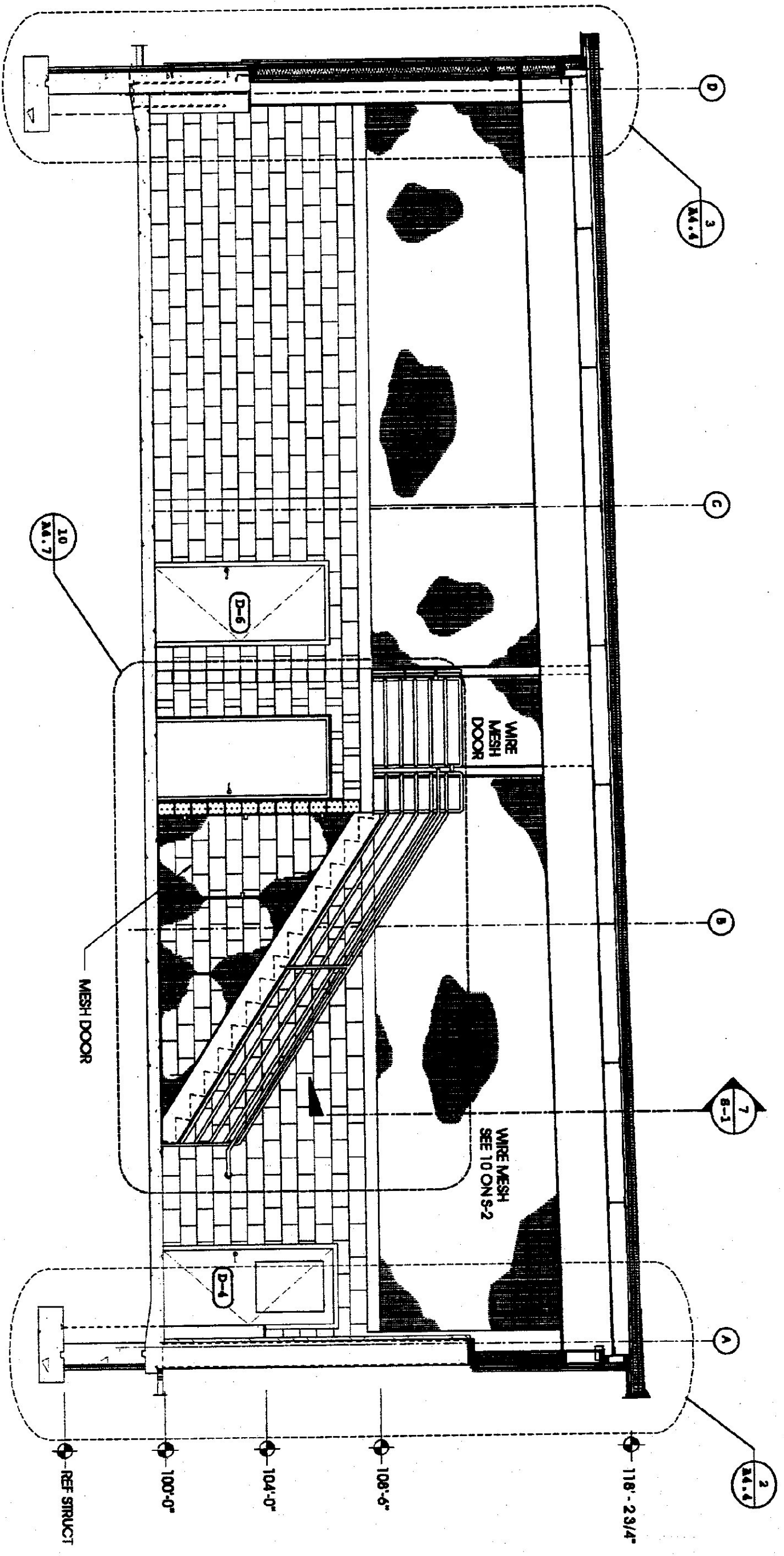
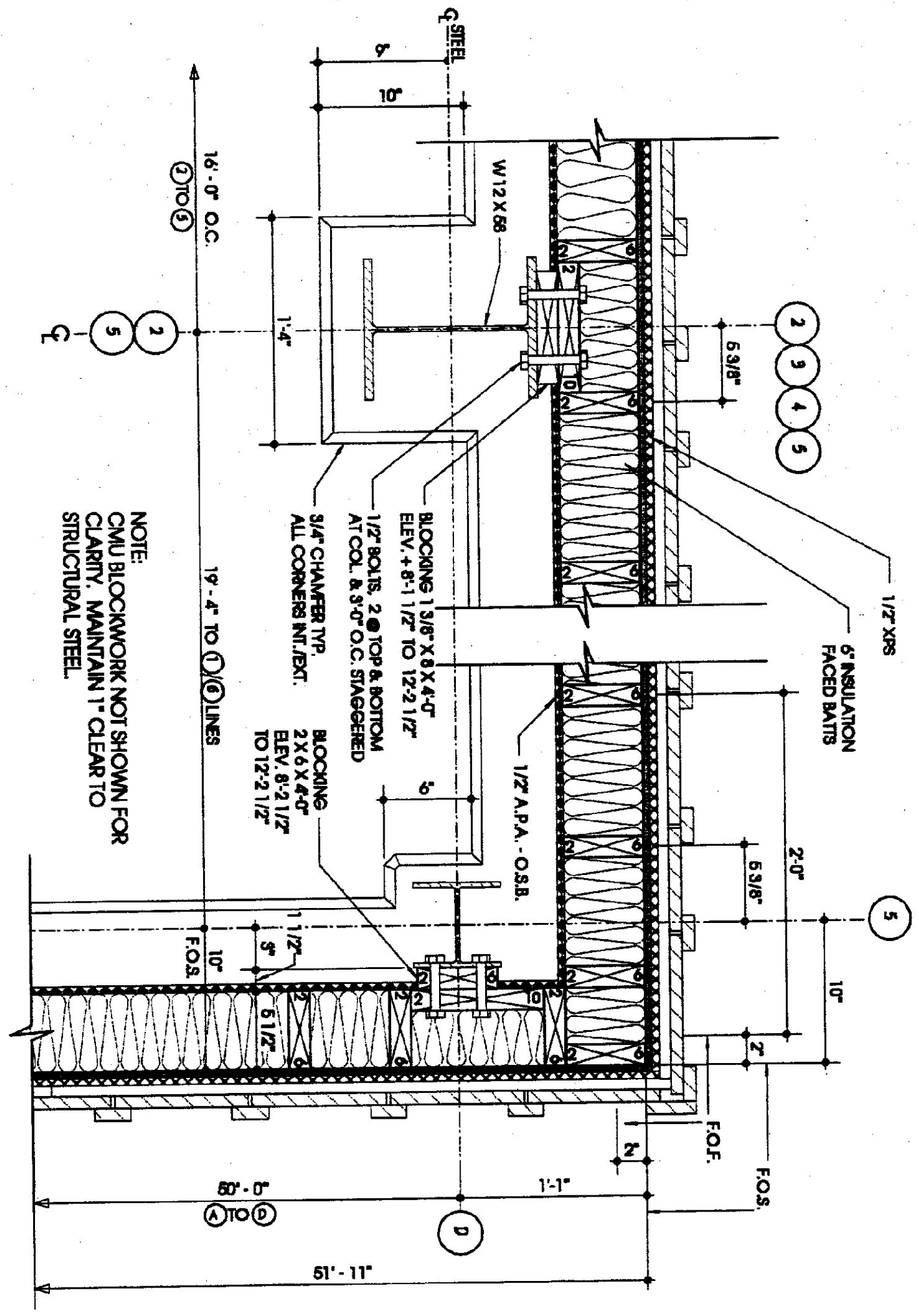


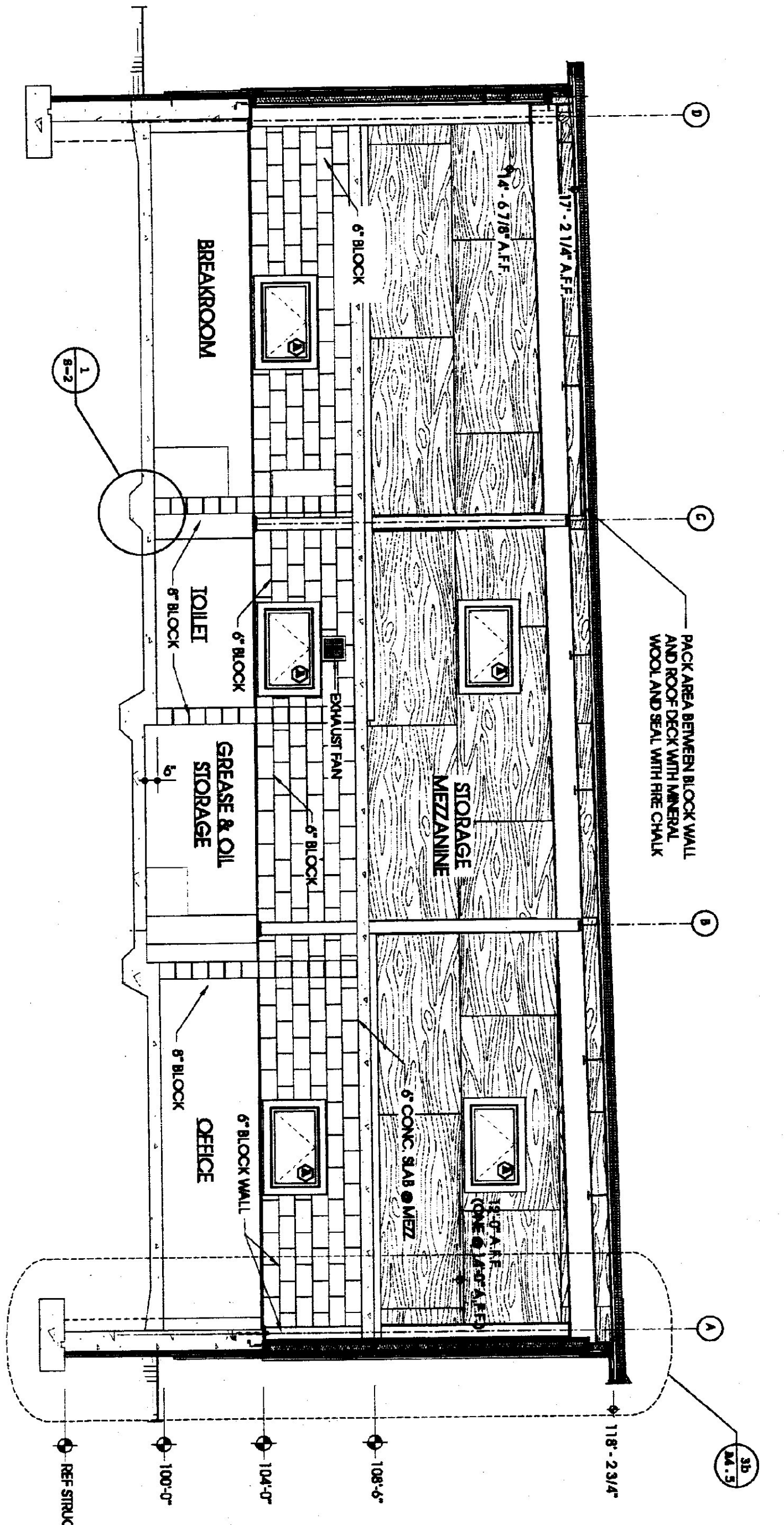
1 ROOF DRIP EDGE
3" = 1'-0"
M.1



2 GARAGE SECTION
1/4" = 1'-0"
A.1 A.1



3 WALL PLAN DETAIL
1/2" = 1'-0"
M.1



4 OFFICE AREA SECTION
1/4" = 1'-0"
M.1

The Design Studio of
Linesync Architecture
14 Corbin Hill Washington Vermont 05405 9745 USA
V.802.244.2525 / F.2.828
www.Linesync.com
www.Linesync.com

- STATE REVIEW AT GARAGE GARAGE A.I. NOTES**
1. PROJECT TO CONFORM TO LOCAL LAW WITH THE NATIONAL ELECTRICAL CODE. OTHER CODES SUCH AS THE INTERNATIONAL MECHANICAL AND PLUMBING CODES SHALL BE REFERENCED BY THE CONTRACTOR TO THE APPROPRIATE AGENCIES INVOLVED BY THIS WORK. LOCAL USE GROUPS BUSINESS (SIMILAR TO FIRE STATION).
 2. THE CONTRACTOR SHALL VERIFY CONDITIONS AND DIMENSIONS IN FIELD PRIOR TO RESECTION.
 3. ALL BRACING IN CONTACT WITH CONCRETE AND MASONRY TO BE PRESERVE TREATED WOOD.
 4. COORDINATE ALL BRACING W/ PROJECT MANUAL.
 5. ARCHITECTURAL ELEVATION BULLETIN REFERENCE A 100% DRAWING AT THE TOP OF THE SEVEN ELEVATION OF 24" x 36" REF. C.1.

- PROJECT DRAWING LIST**
- C111. W/ PUMPHOUSE-BATTERY
 - C1. W/ INTERPLAN
 - C2. LAYOUT PLAN
 - C3. ROAD PROFILE
 - C4.567. ROAD CROSS SECTIONS
 - C8.9. RTIS DETAILS
 - C1111. SEPTIC SYSTEM DETAILS
- GARAGE & OFFICE BY LINER INC ARCHITECTURE**
- A.1. ELEVATIONS
 - A.2. ELEVATIONS
 - A.31. INT. FLOOR PLAN
 - A.32. MEZZANINE/FLOOR PLAN WINDOW WORK (KCHED)
 - A.41. SECTION
 - A.42. INTERIOR ELEVATIONS
 - A.43. INTERIOR ELEVATIONS & SECTIONS
 - A.44. WALL SECTIONS & DETAILS
 - A.45. DETAILS
 - A.46. WINDOW & FAIR DETAILS

- GARAGE STRUCTURAL BY BALKAN ASSOCIATES**
- B11. GEN STRUCT NOTES & STANDARD DETAILS
 - B11.1. FOUNDATION PLAN
 - B12. STRUCTURAL SECTIONS & DETAILS
 - B13. FINISHED STRUCTURAL DETAILS
- ELECTRICAL BY DUFFENBERG-BENNETT**
- E1. ELECTRICAL SITE PLAN
 - E11. FIRST FLOOR PLAN (ON CONCLUDES MEZ)

GARAGE MEZZANINE FLOOR BY DEPT OF STATE BLDG

MEZ

DATE: 07 FEB 02

REVISIONS:

NO.	DATE	REVISIONS
1	20 NOV 01	ISSUED FOR STATE REVIEW
2	07 FEB 02	ISSUED FOR MD

ATSP
AGENCY OF TRANSPORTATION
STORAGE FACILITY PROJECT

SEALBORO, VERMONT

SECTIONS & DETAILS

DATE: 17 JUNE 2001

PROJECT NUMBER: 0113

SCALE: 1/4" = 1'-0"

17 JUNE 2001

17 JUNE 2001