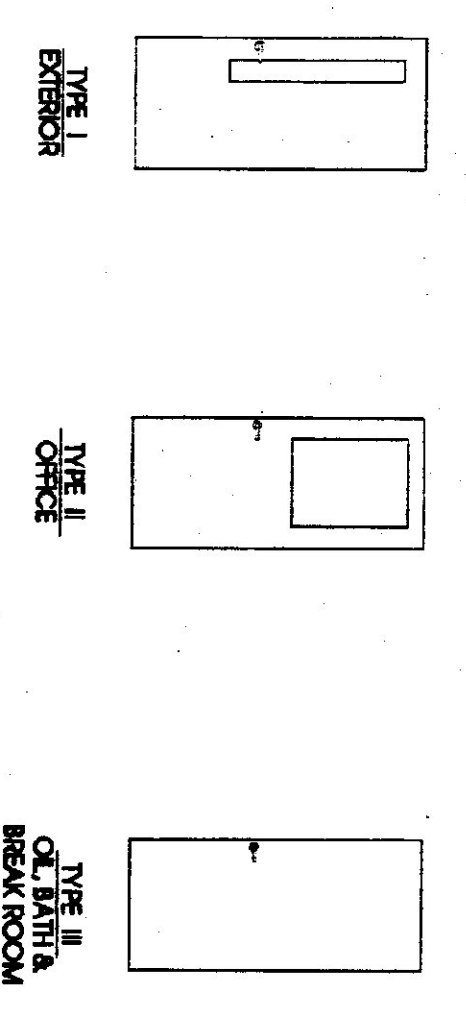


1
ROOF PLAN

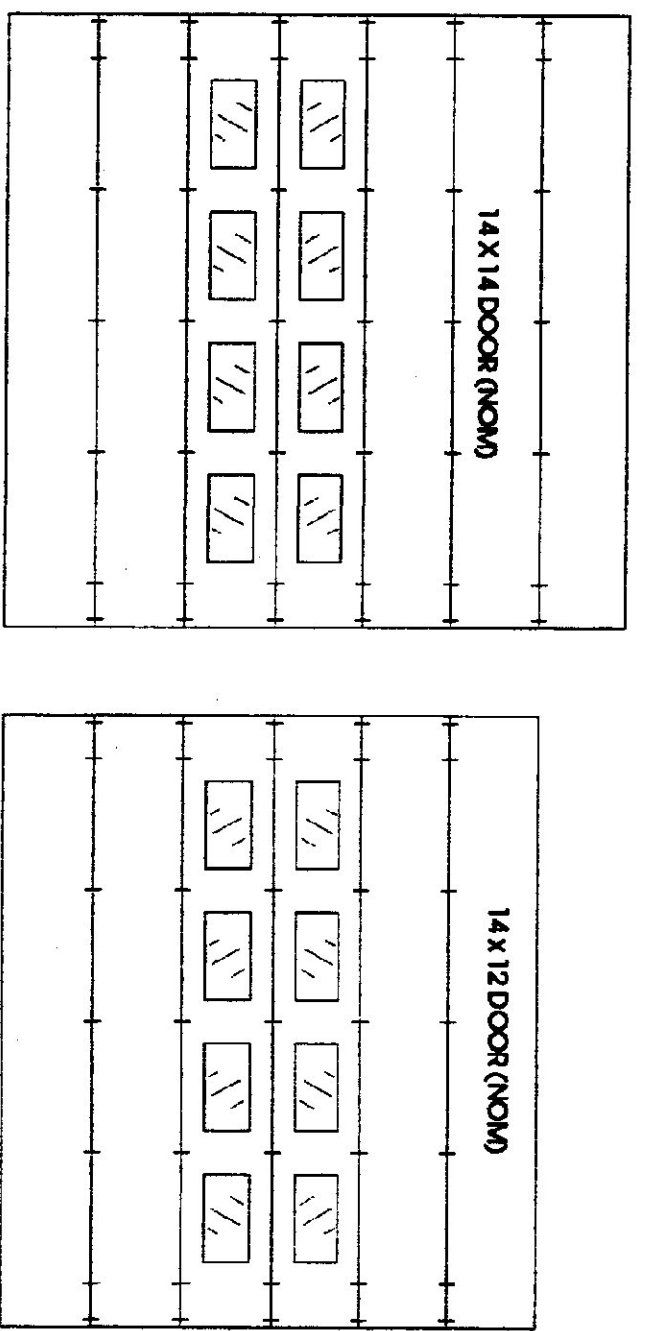
DOOR SCHEDULE

NO.	QTY.	SIZE	TYPE	FRAME MATERIAL	DOOR MATERIAL	HOW SET #	GLAZING REQUIRED	BUTTS	LOCK PLATE	WIRE STRIP	CLOSER	REMARKS
D1,2	3	3'-0" x 7'-0"	I	C	INSULATED METAL	1	6" x 48" WIREGLASS	4 1/2" x 1 1/2" BALL BEARING NON-REMOVABLE PINS	3 1/2" x 10" STAINLESS STEEL	VINYL	SARGENT'S 1280 X P.A. X.H.O.	THERMAL BREAK FRAME, SWEEP
D4	1	3'-0" x 6'-8"	II	C	HOLLOW METAL	2	20" x 32" SAFETY	4 1/2" x 1 1/2"	-	NONE	SARGENT'S 1280 X H.O.	-
D7	1	-	III	B	-	-	-	-	-	NONE	-	-
D6	1	-	III	B	-	-	-	-	-	NONE	-	-
D6	1	-	III	B	-	-	-	-	-	NONE	-	-
D9	3	14"W. x 12"H	IV	C	INSULATED STEEL	4	-	-	-	-	ELECTRIC	OVERHEAD DOOR SERIES 591
D11	1	14"W. x 12"H	IV	C	INSULATED STEEL	4	-	-	-	-	ELECTRIC	OVERHEAD DOOR SERIES 591
D8	1	14"W. x 12"H	V	C	INSULATED STEEL	4	-	-	-	-	ELECTRIC	OVERHEAD DOOR SERIES 591

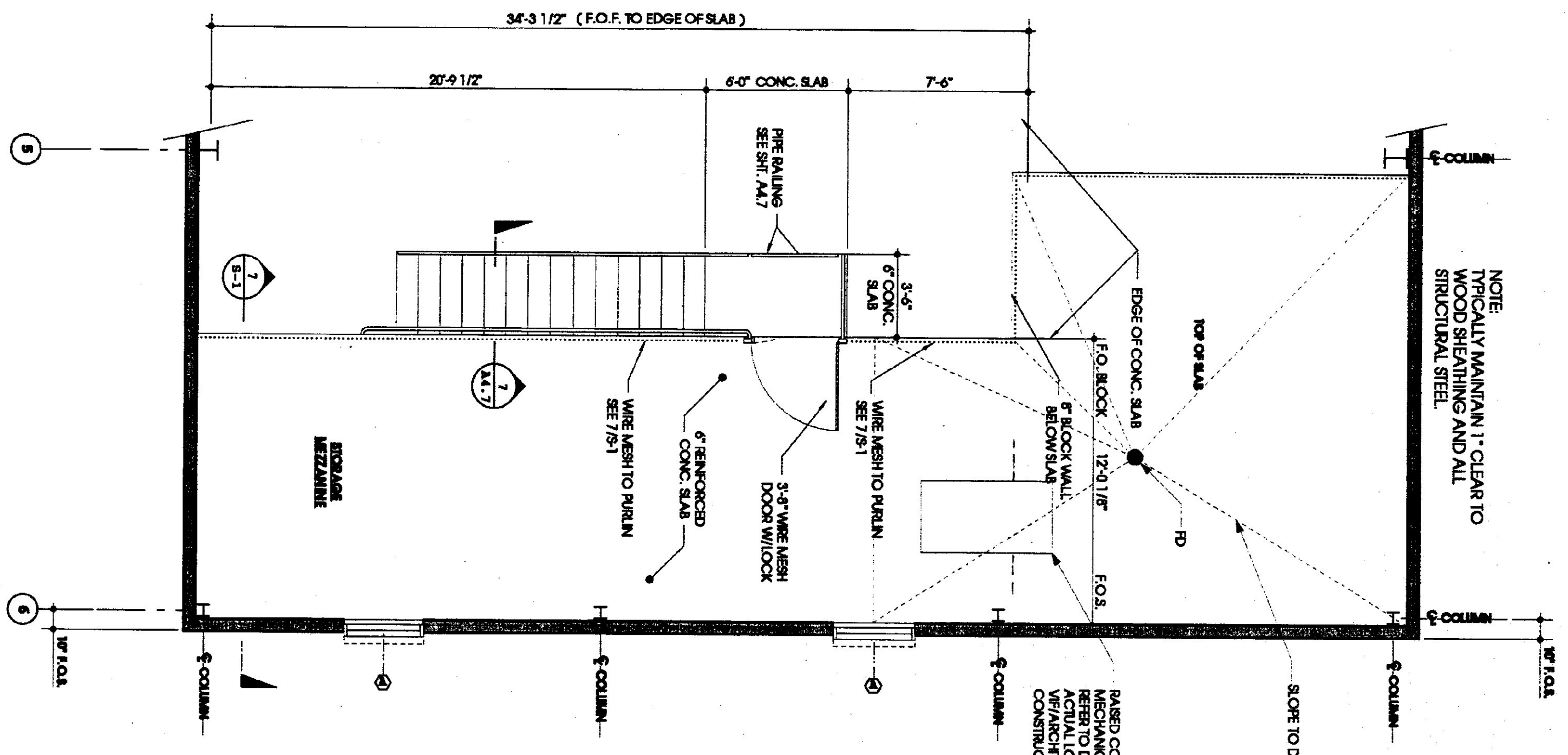


WINDOW SCHEDULE

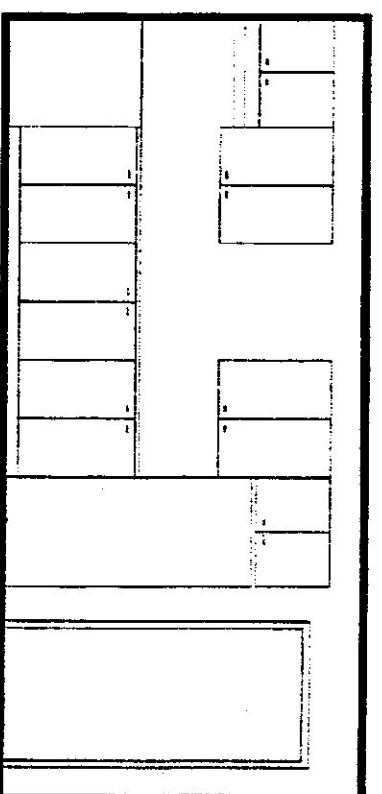
NO.	QTY.	TYPE	FRAME MATERIAL	ROUGH OPENING	REMARKS
A	10	AWNING	METAL	3'-4 1/2" W. x 2'-0 1/2" H.	HARVEST ALL VINYL WINDOWS ACTUAL SIZE TO BE VENDOR'S



2
DOOR & WINDOW SCHEDULES



3
GARAGE STORAGE MEZZANINE PLAN



- KITCHEN CABINET SPECIFICATIONS:**
1. DOORS TO USE 1/2" OVERLAY CABINET HINGES
 2. FINISH TO BE GREEN LAMINATE OVER MDF
 3. PULLS TO BE MFG BY HAVELI CANT # 11639213
 4. CHROME PLATED WHITE FINISH
 5. COUNTERTOP BY HARRISON (KEMENY); DIAMOND TOP; COLOR BLACK FOREST

4
BREAKROOM CABINET ELEVATION

The Design Studio of
Linesync Architecture
14 Centre Hill Way, Shelburne Vermont 05488 9746 USA
Tel: 802.464.2828 / Fax: 802.464.2828
www.Linesync.com

- STATE HIGHWAY GARAGE GENERAL NOTES**
1. PROJECT TO CONFORM TO LOCAL LAWS WITH THE NATIONAL ELECTRICAL CODE AND CODES ENACTED BY LOCAL AND STATE AUTHORITIES HAVING JURISDICTION SHALL APPLY TO THE ELECTRICAL INSTALLATION AND SHALL BE THE RESPONSIBILITY OF THE INSTALLER (SIMILAR TO RESIDENTIAL).
 2. THE CONTRACTOR SHALL VERIFY CONDITIONS AND DIMENSIONS IN FIELD PRIOR TO RECEPTION AND MAINTAIN TO BE RECORDED THROUGHOUT.
 3. ALL REVISIONS IN CONTACT WITH CONTRACT AND MAINTAIN TO BE RECORDED THROUGHOUT.
 4. COORDINATE ALL DRAIN WINDS WITH PROJECT MANUAL.
 5. ARCHITECTURAL ELEVATION REFLECTS REFERENCE A 100% DATUM AT THE TOP OF THE OFFICE SLAB. THIS IS EQUIVALENT TO THE SITE ENGINEERING ELEVATION OF 596.57 REF. C1.

PROJECT DRAWING LIST

NO.	DATE	DESCRIPTION	STATUS
1	20 NOV 01	ISSUED FOR STATE REVIEW	
2	07 FEB 02	ISSUED FOR BID	

CIVIL BY DISPENSE-HENNEY
 C1 SITE PLAN
 C2 ROAD PROFILE
 C3 ROAD CROSS SECTIONS
 C4,5,6,7 ROAD CROSS SECTIONS
 C8,9 SITE DETAILS
 C10,11,12 SITE DETAILS

GARAGE & OFFICES BY LINENSINC ARCHITECTURE
 A11 SITE PLAN, LOCATION MAP & REFERENCES
 A12 ELEVATIONS
 A13 INTERIOR ELEVATIONS
 A14 MEZZANINE ROOF PLAN, WINDOW, SCHED
 A15 INTERIOR ELEVATIONS & SECTIONS
 A16 WALL SECTIONS
 A17 WINDOW & SLAB DETAILS
 A18 DETAILS

GARAGE STRUCTURAL BY SALAM ASSOCIATES
 S01 GSI STRUCTURE NOTES & STANDARD DETAILS
 S11 FOUNDATION PLAN
 S12 ROOF FRAMING PLAN
 S21,2 STRUCTURAL SECTIONS & DETAILS
 S31 STANDARD STRUCTURAL DETAILS

ELECTRICAL BY DISPENSE-HENNEY
 E1 ELECTRICAL STRUCTURE
 E2 FIRST FLOOR PLAN (EXCLUDES MEZ.)

GARAGE MECH/ELECTRICAL BY DEPT OF STATE BLDG
 M1 GARAGE MECH/ELECTRICAL PLAN
 M2 GARAGE MECH/ELECTRICAL SECTIONS
 M3: A.O.T. 2x4x8 STROBE LIGHT W/STRUCT.
 M4: A.O.T. 2x4x8 STROBE LIGHT W/STRUCT.
 V1 FLOOR PLAN & DETAILS
 V2 VENTILATION SYSTEM PLAN & DETAILS

ATSP
AGENCY OF TRANSPORTATION
STORAGE FACILITY PROJECT

REARBOARD, VERMONT

FLOOR PLAN

DATE: 17 JUNE 2001

PROJECT NUMBER: 0113

SCALE: 1/8" = 1'-0"

17 JUNE 2001

DATE: 17 JUNE 2001

PROJECT NUMBER: 0113

SCALE: 1/8" = 1'-0"

17 JUNE 2001