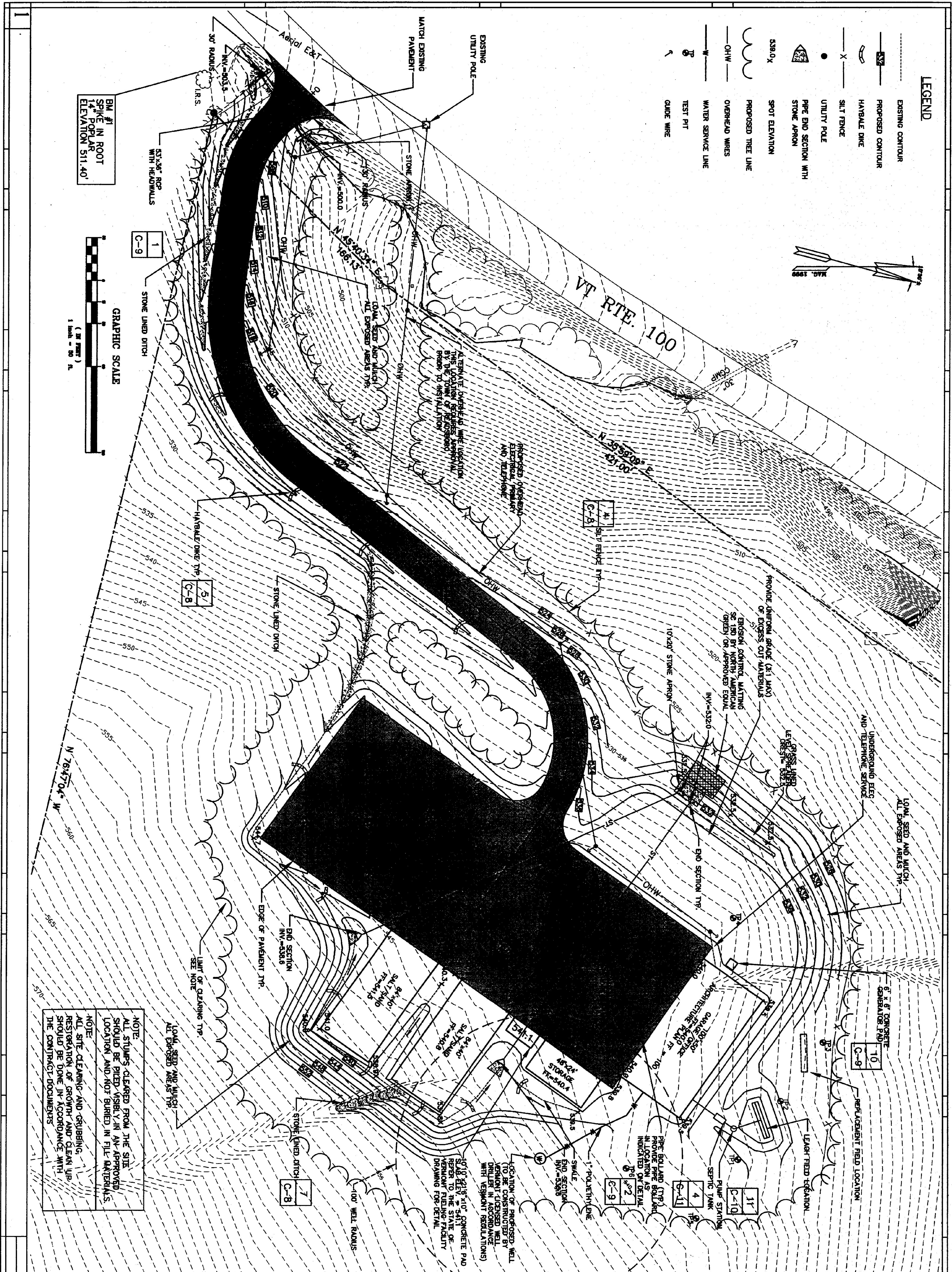
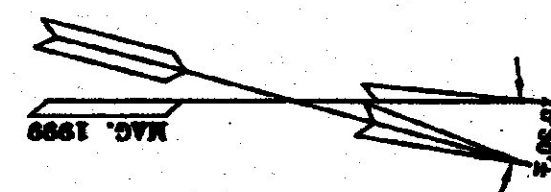
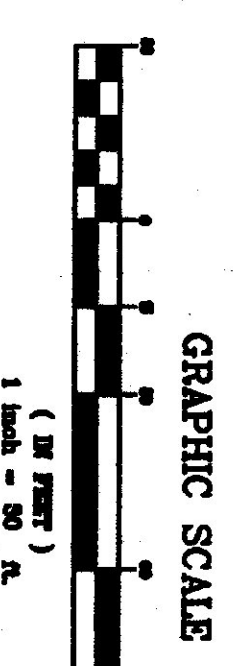


LEGEND

- EXISTING CONTOUR
- - - PROPOSED CONTOUR
- HAYBALE DIKE
- UTILITY POLE
- PIPE END SECTION WITH STONE APRON
- SPOT ELEVATION
- PROPOSED TREE LINE
- OHW — OVERHEAD WIRES
- WATER SERVICE LINE
- ⊕ TEST PIT
- GROUND WIRE
- EXISTING CONTOUR
- - - PROPOSED CONTOUR
- HAYBALE DIKE
- UTILITY POLE
- PIPE END SECTION WITH STONE APRON
- SPOT ELEVATION
- PROPOSED TREE LINE
- OHW — OVERHEAD WIRES
- WATER SERVICE LINE
- ⊕ TEST PIT
- GROUND WIRE



BM #1 IN ROOT
14 POPULAR
ELEVATION 511.40'



NOTE:
ALL STUMPS CLEARED FROM THE SITE SHOULD BE PILED VISIBLY IN AN APPROVED LOCATION AND NOT BURIED IN FILL MATERIALS.

NOTE:
ALL SITE CLEANING AND GRUBBING RESTORATION OF GROWTH AND CLEAN UP SHOULD BE DONE IN ACCORDANCE WITH THE CONTRACT DOCUMENTS.

BID DOCUMENTS
DO NOT REVISE
January 24, 2002



Project: State of Vermont
Landscape Architecture

READSBORO
HIGHWAY
GARAGE PROJECT

SITE PLAN

23 OCTOBER 2001

C1