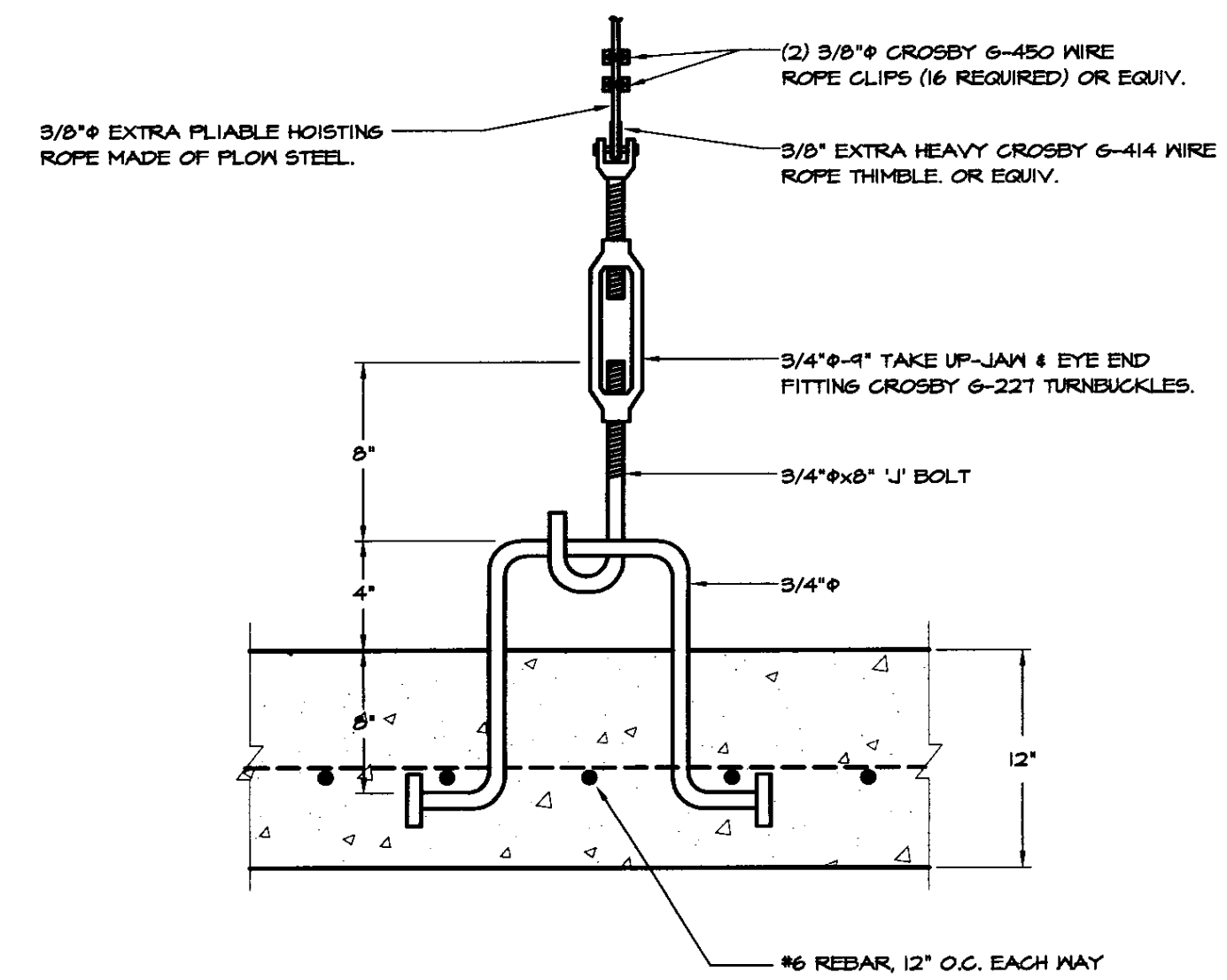


DIFFUSER-GRILLE-REGISTER-LOUVER SCHEDULE								L = LOUVER S = SUPPLY	PLAN SYMBOL
No.	MANUFACTURER	SERIES	MODEL	SIZE	AIR FAT	DAMPER	FINISH	REMARKS	
S-1	METAL-AIRE	V4000	V4004	10"x8"	-	-	-		
S-2	METAL-AIRE	V4000	V4004	8"x4"	-	-	-		
S-3	METAL-AIRE	V4000	V4004	12"x6"	-	-	-		
L-1	RUSKIN	ELF	ELF3TSDX	48"x48"	-	-	B.E.	NOTE 1	

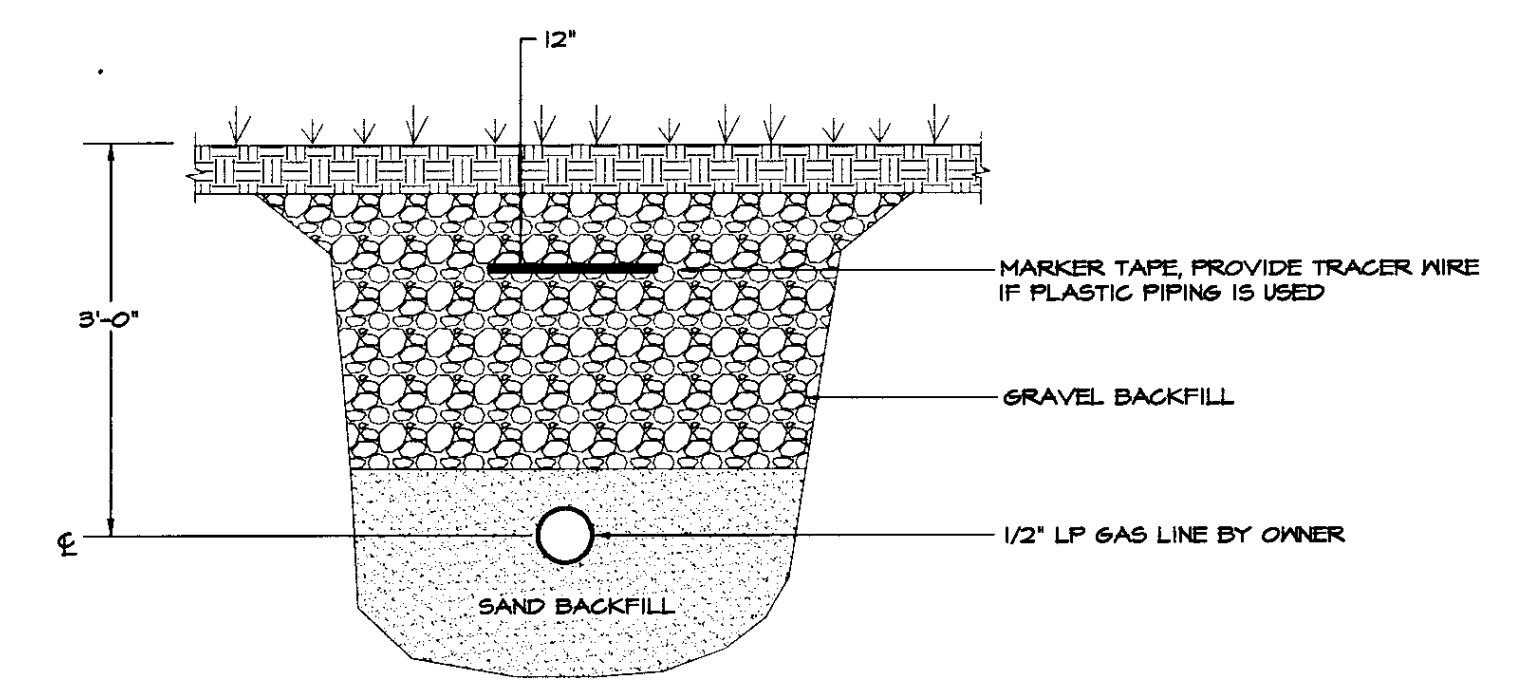
NOTES:  
1) PROVIDE GALVANIZED BIRDSCREEN. BAKED ENAMEL FINISH, COLOR TO BE SELECTED BY ENGINEER.

GAS FIRED UNIT HEATER SCHEDULE										PLAN SYMBOL
No.	MANUFACTURER	MODEL	CFM AT 0" E.S.P.	MBH LP GAS INPUT	MBH LP GAS OUTPUT	FAN DRIVE	MODEL			REMARKS
							H.P.	VOLT	PH	
GUH-1	REZNOR	UDBS-300	3500	300	244	BELT	1 1/2	240	1	NOTE 1
GUH-2	REZNOR	UDBS-300	3500	300	244	BELT	1 1/2	240	1	NOTE 1
GUH-3	REZNOR	UDBS-45	456	45	36.1	DIRECT	1/6	115	1	NOTE 2

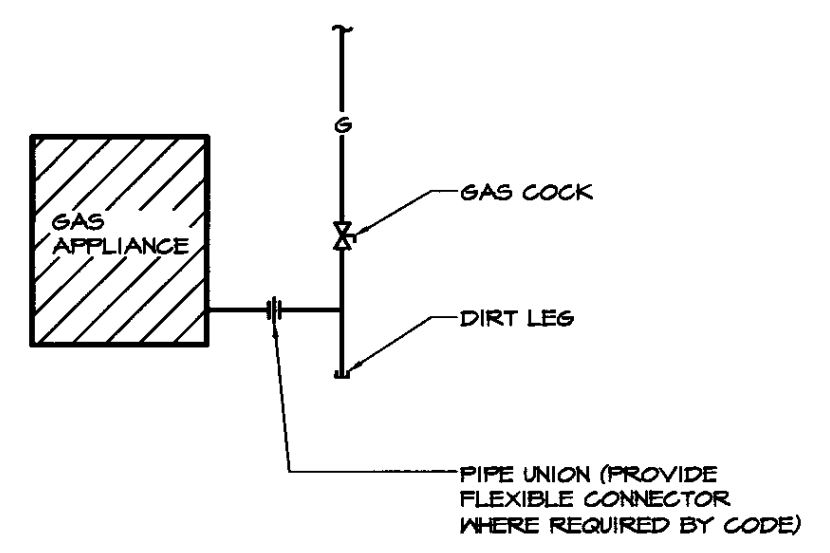
NOTES:  
1) PROVIDE ALL STANDARD FEATURES INCLUDING THE FOLLOWING FACTORY INSTALLED OPTIONS: PROPANE CONVERSION KIT, TWO STAGE CONTROL, 401 STAINLESS STEEL HEAT EXCHANGER, ADJUSTABLE BELT DRIVE MOTOR, TOTALLY ENCLOSED MOTOR, BLOWER AND BELT GUARDS. PROVIDE THE FOLLOWING FIELD INSTALLED ACCESSORIES: COMBUSTION AND VENT KIT, TWO STAGE THERMOSTAT.  
2) PROVIDE ALL STANDARD FEATURES INCLUDING THE FOLLOWING FACTORY INSTALLED OPTIONS: PROPANE CONVERSION KIT, TWO STAGE CONTROL, 401 STAINLESS STEEL HEAT EXCHANGER, ADJUSTABLE MULTI-TAP DIRECT DRIVE MOTOR, DUCT FLANGE, TOTALLY ENCLOSED MOTOR, BLOWER GUARD. PROVIDE THE FOLLOWING FIELD INSTALLED ACCESSORIES: COMBUSTION AND VENT KIT, TWO STAGE HEATING THERMOSTAT.



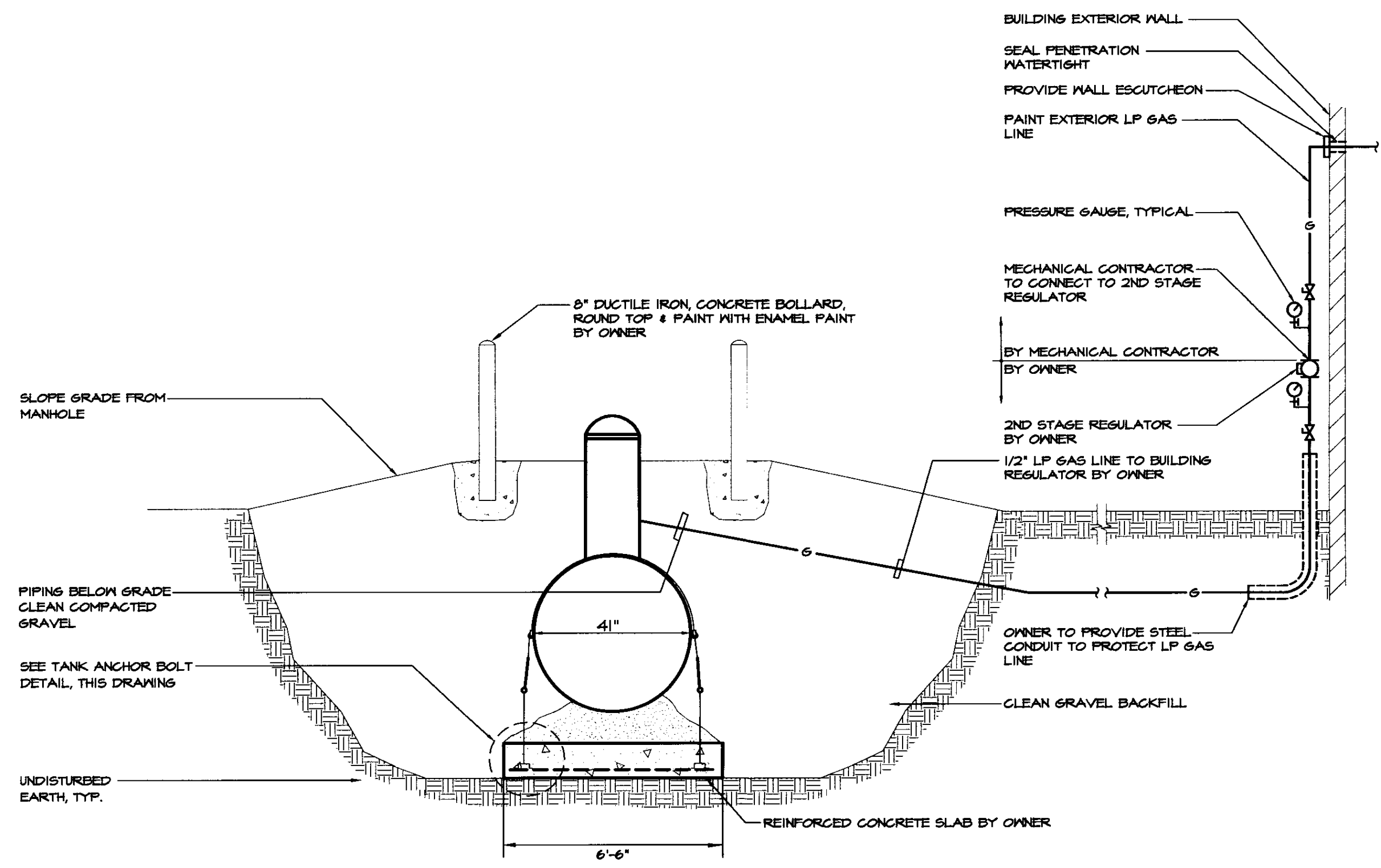
TANK ANCHOR BOLT DETAIL  
NOT TO SCALE



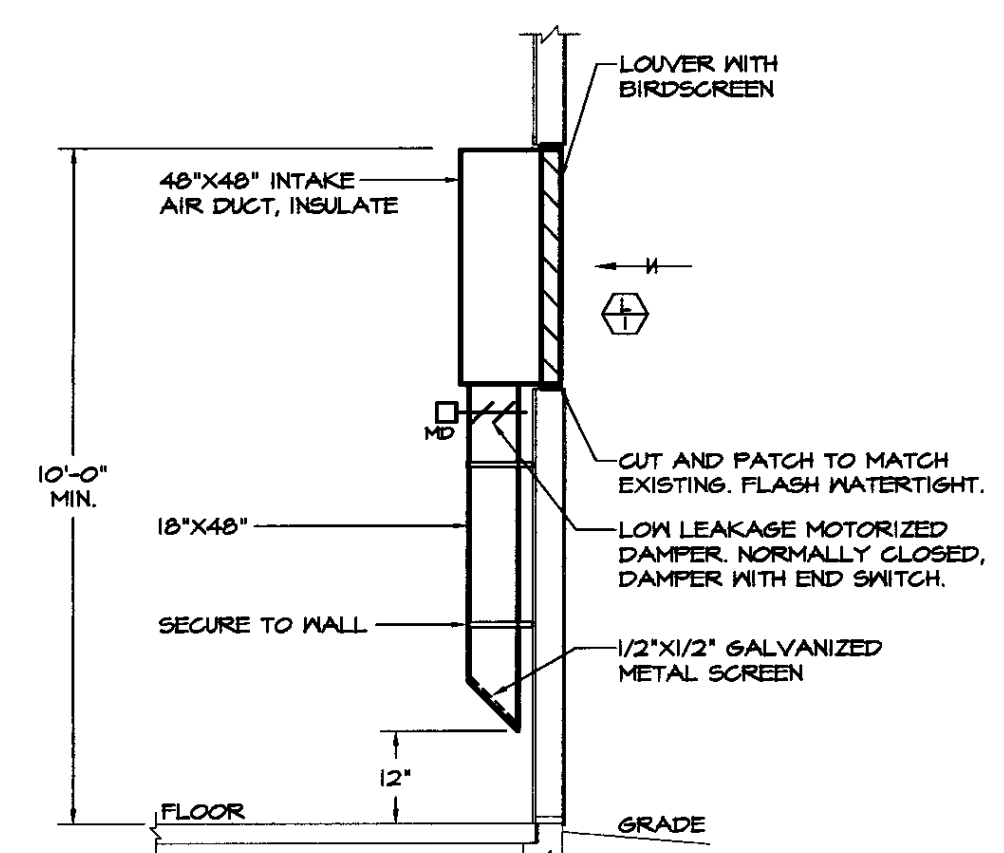
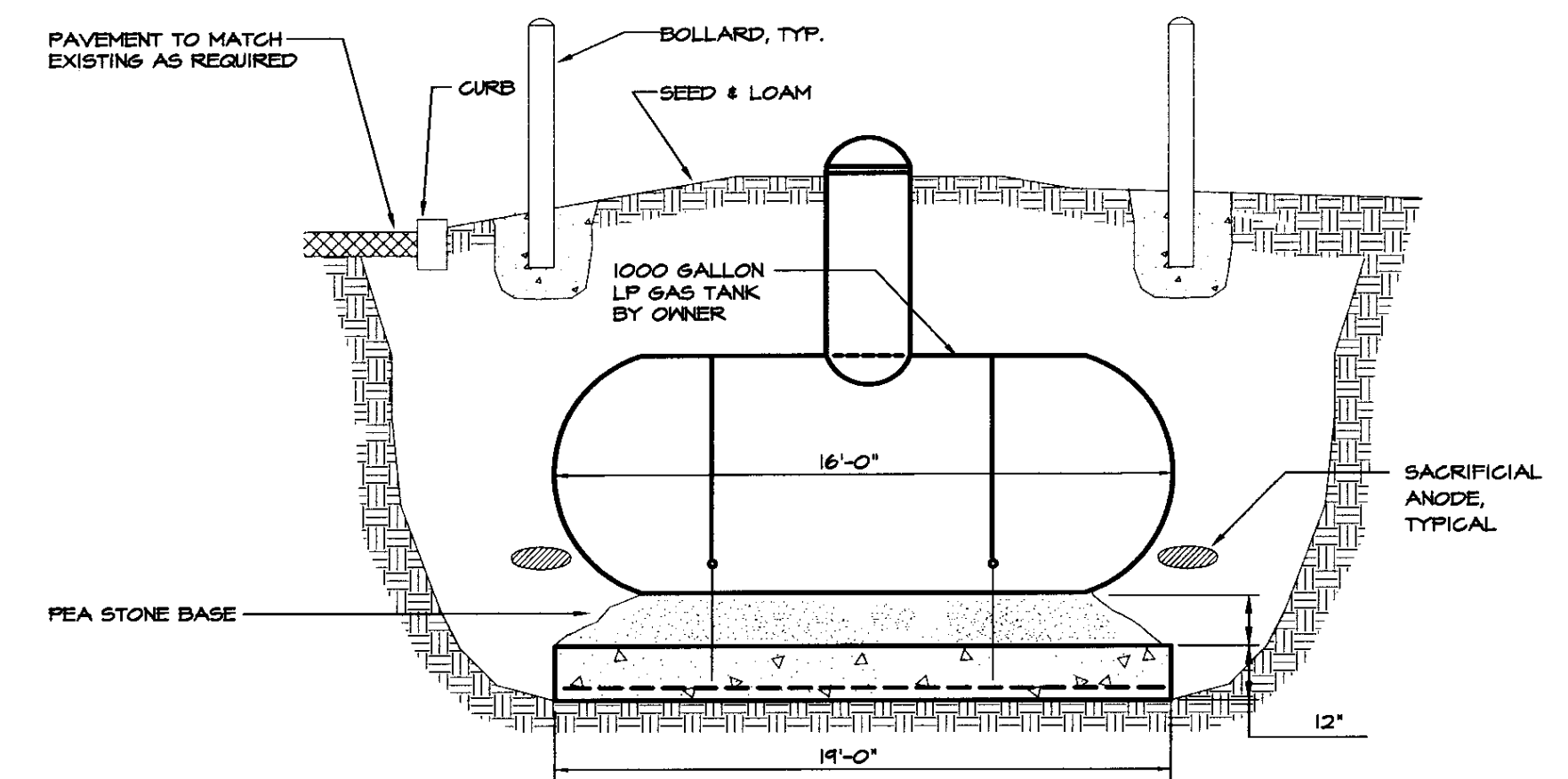
LP GAS SUPPLY PIPE TRENCHING DETAIL  
NOT TO SCALE



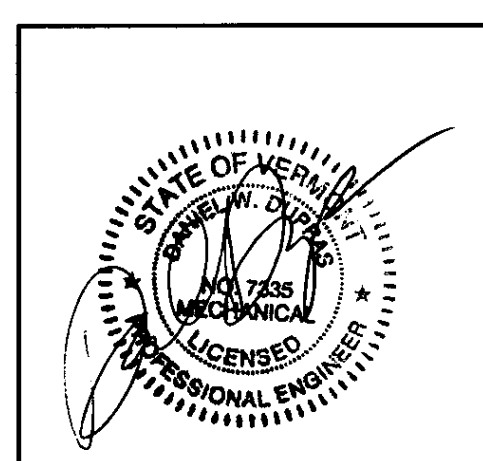
LP GAS APPLIANCE CONNECTION DETAIL  
NOT TO SCALE



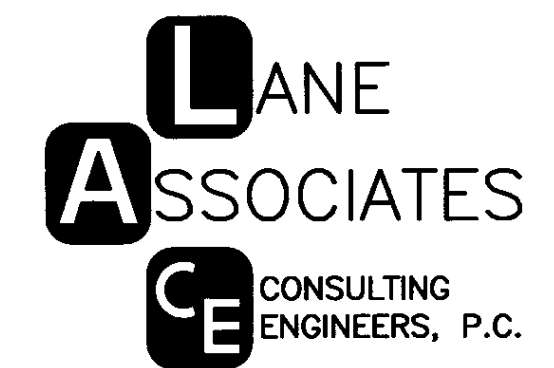
UNDERGROUND LP GAS TANK DETAILS  
NOT TO SCALE



INTAKE LOUVER DETAIL  
NOT TO SCALE



1	BIDDING AND CONSTRUCTION	01/2005
NO.	ISSUED FOR	DATE



HEATING, VENTILATION, & AIR CONDITIONING, PLUMBING, FIRE PROTECTION, & ELECTRICAL  
CHARLES F. LANE, P.E.  
DANIEL W. DUPRAS, P.E.  
51 KILLINGTON AVENUE, RUTLAND, VERMONT 05701  
TELEPHONE: (802)747-3346  
FAX/MODEM: (802)747-3356

MECHANICAL SCHEDULES AND DETAILS			
EAST DORSET AOT GARAGE VERMONT AGENCY OF TRANSPORTATION EAST DORSET, VERMONT			
APPR.	DVD	DRAWN:	KFC
SCALE:	AS NOTED	PROJ. NO.	0312-17

M  
3

X:\031217\Drawings\Mech\031217.M03.dwg, M3, 7/6/2005 5:57:23 PM, © LANE ASSOCIATES CONSULTING ENGINEERS PC, 2005