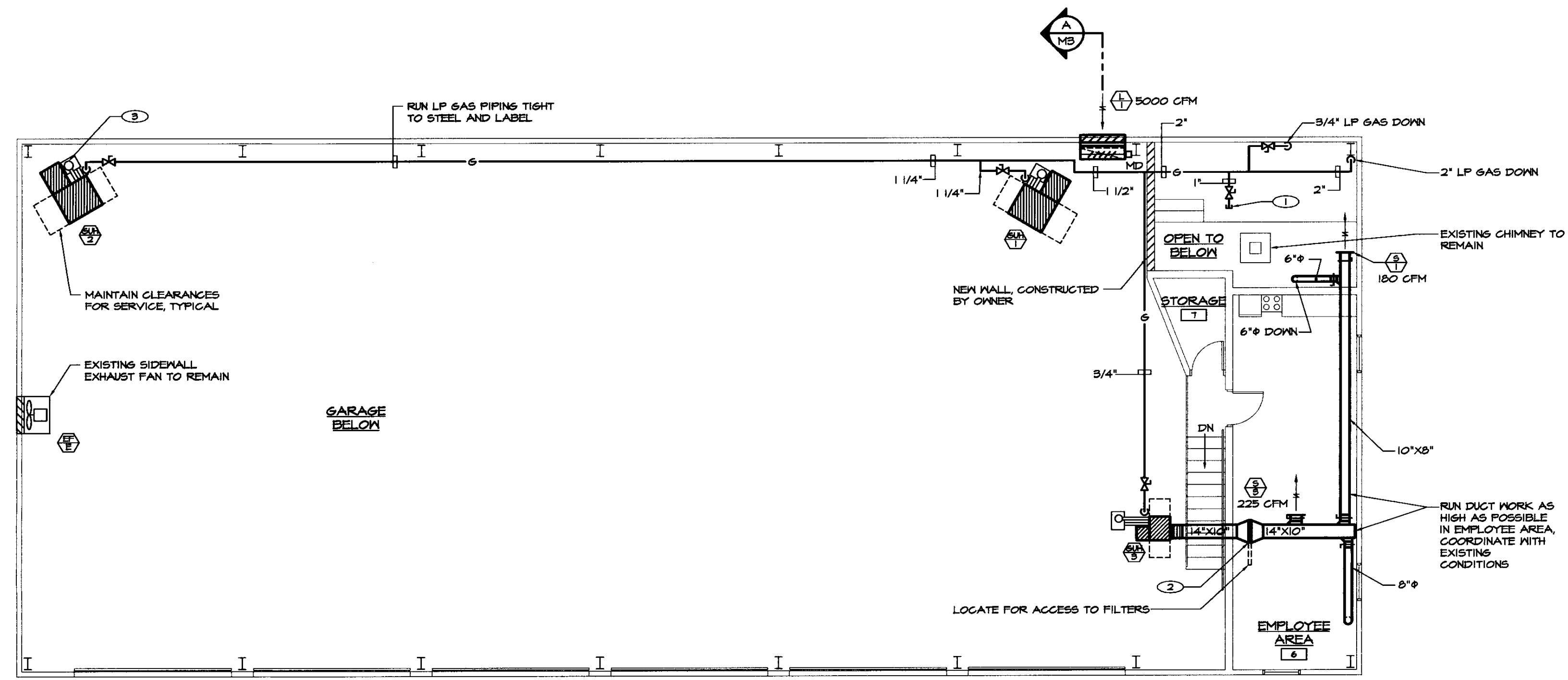


**VERTICAL SEPARATED COMBUSTION / VENT DETAIL**  
NOT TO SCALE

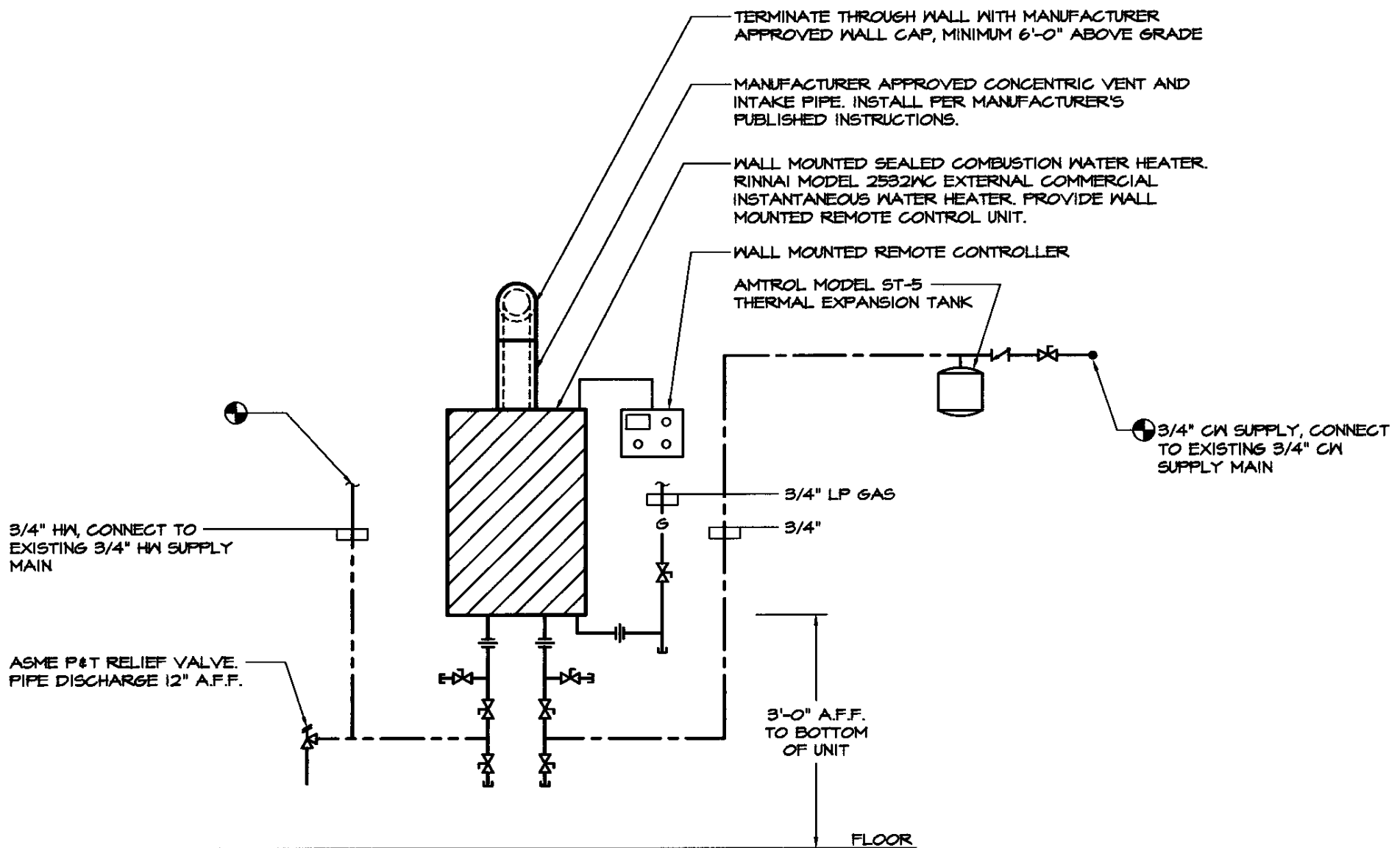
NOTE: SIZE VENT PIPE AND COMBUSTION AIR PIPE PER MANUFACTURER'S RECOMMENDATIONS. SUBMIT FOR REVIEW AND APPROVAL. INSTALL ALL COMPONENTS PER MANUFACTURER'S LATEST PUBLISHED INSTALLATION MANUAL AND IN ACCORDANCE WITH ALL STATE CODES.

**DRAWING NOTES:** (APPLY TO THIS DRAWING ONLY)

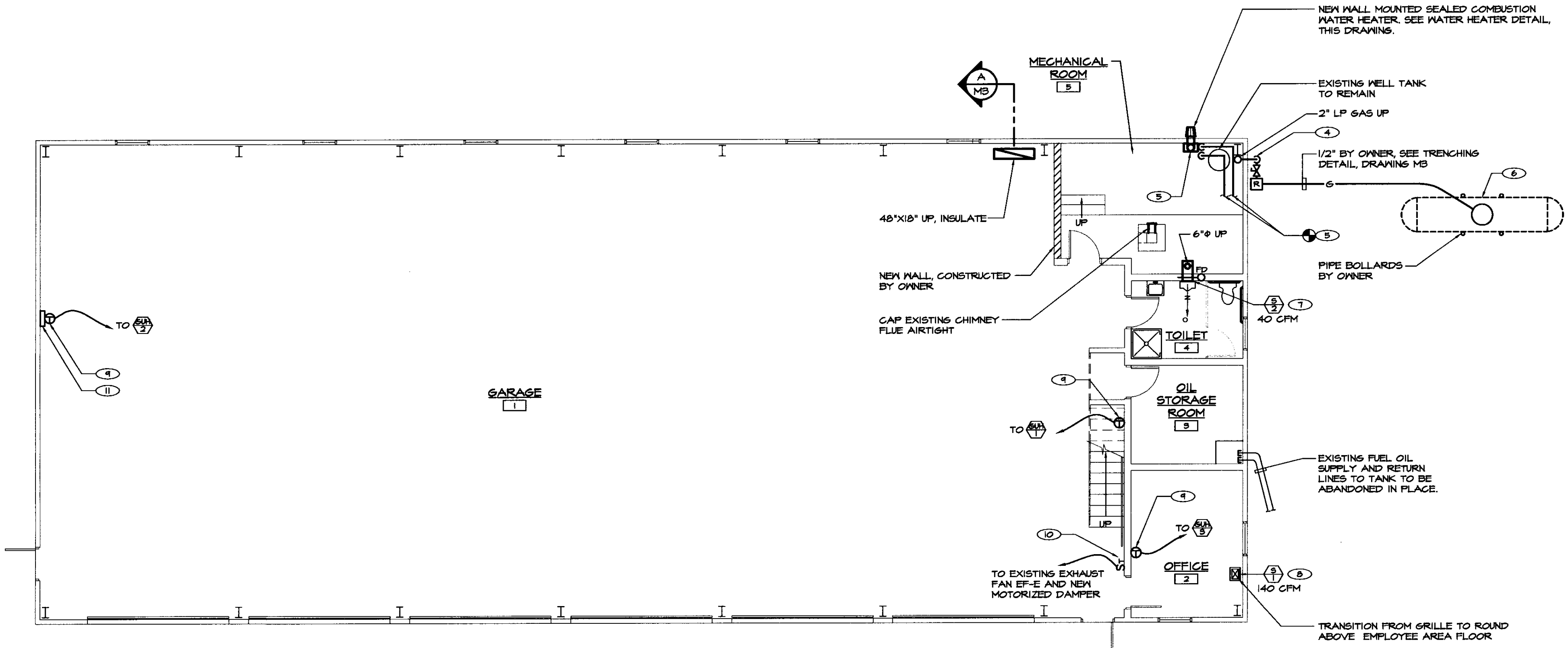
- 1 PROVIDE 1" LP GAS BRANCH VALVED AND GAPPED FOR FUTURE.
- 2 PROVIDE 24"x24" FILTER X 1" THICK, PROVIDE FILTER RACK WITH GASKETED HINGED ACCESS DOOR.
- 3 PROVIDE VERTICAL SEPARATED COMBUSTION / VENT. SEE DETAIL, THIS DRAWING. TYPICAL EACH GAS FIRED UNIT HEATER.
- 4 2" LP GAS UP. CONNECT TO SECOND STAGE REGULATOR. PROVIDE GAS SHUTOFF IN RISER. SEE LP GAS TANK DETAIL, DRAWING MB.
- 5 PROVIDE LP GAS FIRED WATER HEATER. SEE WATER HEATER DETAIL, THIS DRAWING. CONNECT 3/4" HX SUPPLY & CH SUPPLY TO EXISTING.
- 6 UNDERGROUND 1000 GALLON LP GAS TANK, BY OWNER. SEE DETAIL, DRAWING MB.
- 7 CUT AND PATCH EXISTING WALL. MOUNT SUPPLY DIFFUSER, IN TOILET (ROOM 4), 6" FROM CEILING TO TOP.
- 8 CUT AND PATCH EXISTING CEILING FOR NEW REGISTER. TRANSITION TO ROUND ON DUCT RISER.
- 9 MOUNT THERMOSTAT 54" A.F.F., TYPICAL.
- 10 FURNISH AND INSTALL NEW 15-MINUTE, SPRING-WOUND TIMER. ACTIVATION OF TIMER SWITCH SHALL OPEN MOTORIZED DAMPER FOR INTAKE LOUVER. WHEN DAMPER IS OPEN, END SWITCH SHALL START EXISTING EXHAUST FAN. WHEN TIMER SWITCH IS OFF, DAMPER SHALL CLOSE AND EXHAUST FAN SHALL TURN OFF. COORDINATE WIRING WITH ELECTRICAL CONTRACTOR.
- 11 PROVIDE INSULATED, BACK MOUNTING BLOCK FOR THERMOSTAT.



**MEZZANINE FLOOR PLAN - MECHANICAL NEW WORK**  
SCALE: 1/8"=1'-0"



**WATER HEATER DETAIL**  
NOT TO SCALE



**MAIN FLOOR PLAN - MECHANICAL NEW WORK**  
SCALE: 1/8"=1'-0"

	NO.	ISSUED FOR	DATE
	1	BIDDING AND CONSTRUCTION	01/2005

**LANE ASSOCIATES**  
CONSULTING ENGINEERS, P.C.

HEATING, VENTILATION, & AIR CONDITIONING, PLUMBING, FIRE PROTECTION, & ELECTRICAL

CHARLES F. LANE, P.E.  
DANIEL W. DUPRAS, P.E.

51 KILLINGTON AVENUE,  
RUTLAND, VERMONT 05701  
TELEPHONE: (802)747-3346  
FAX/MODEM: (802)747-3356

FLOOR PLANS - MECHANICAL NEW WORK			
EAST DORSET AOT GARAGE VERMONT AGENCY OF TRANSPORTATION EAST DORSET, VERMONT			
APPR.	DVD	DRAWN:	TDL/KPC
SCALE:		AS NOTED	
PROJ. NO.	0312-17		

**M  
2**