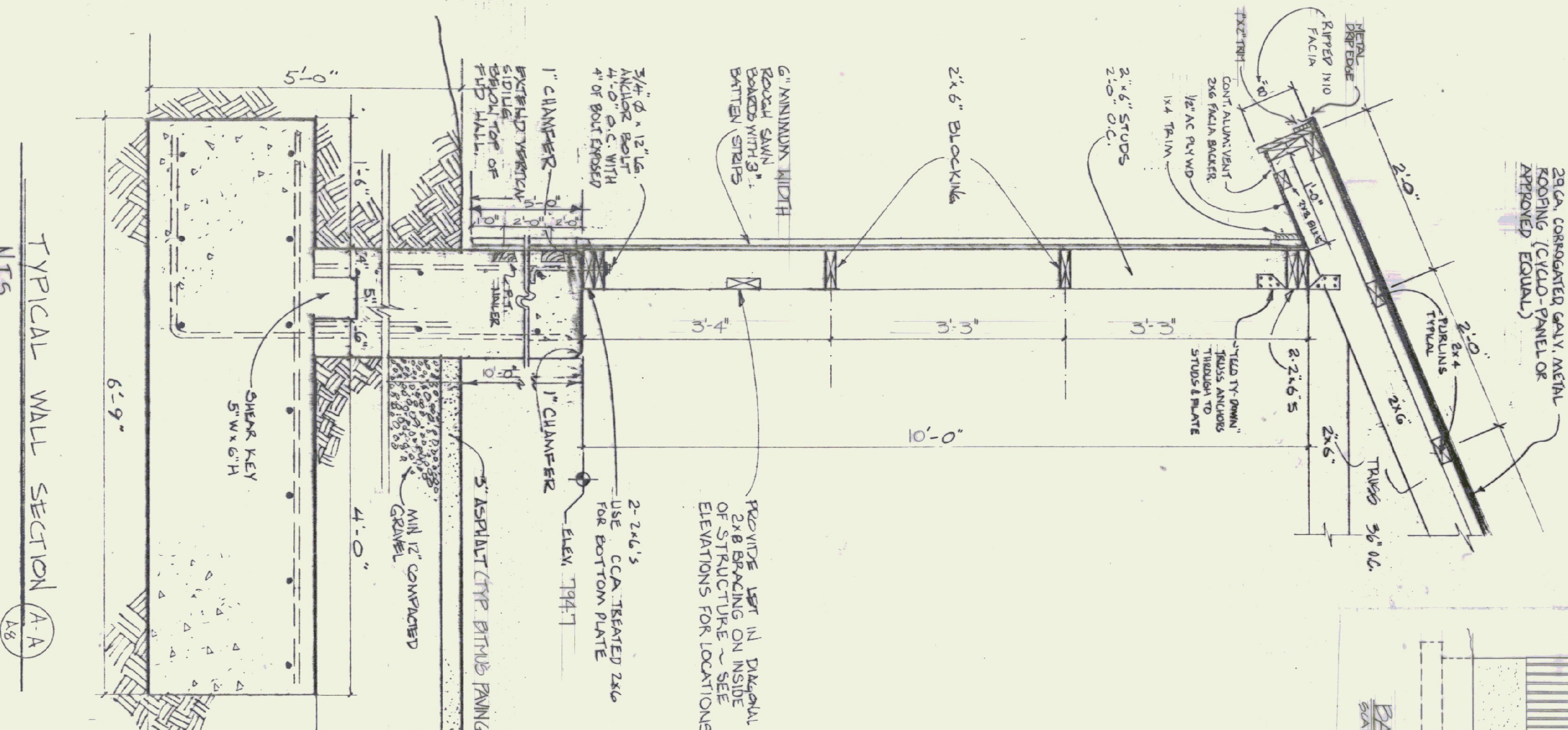


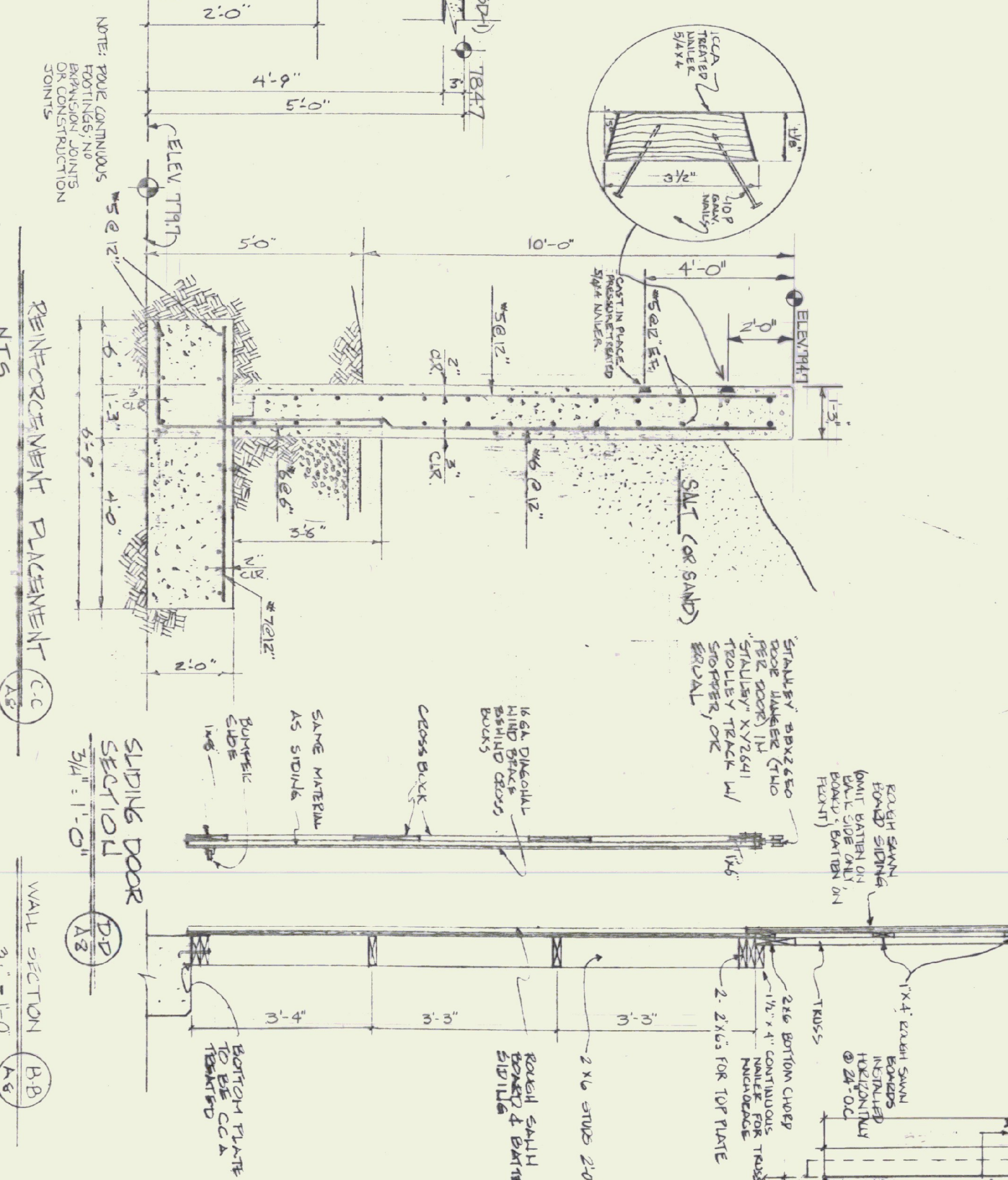
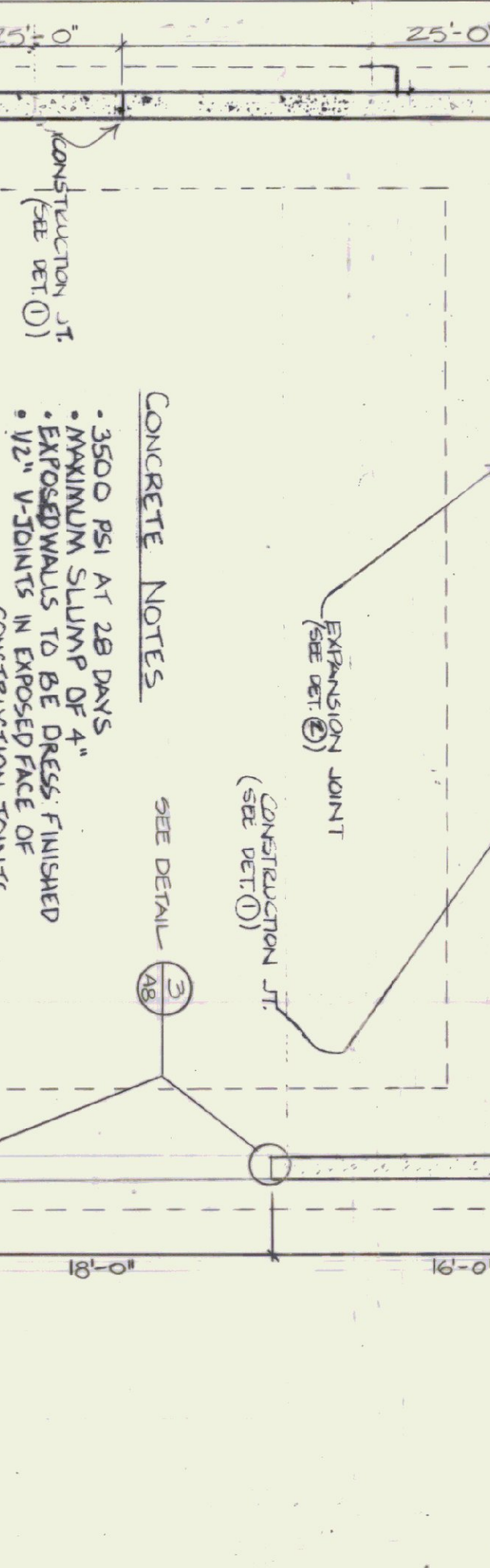
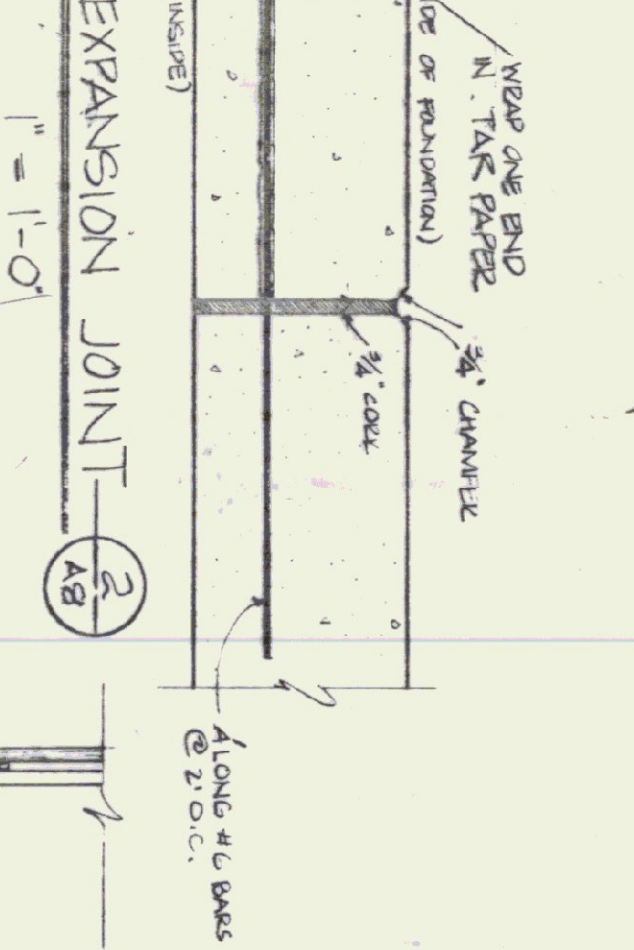
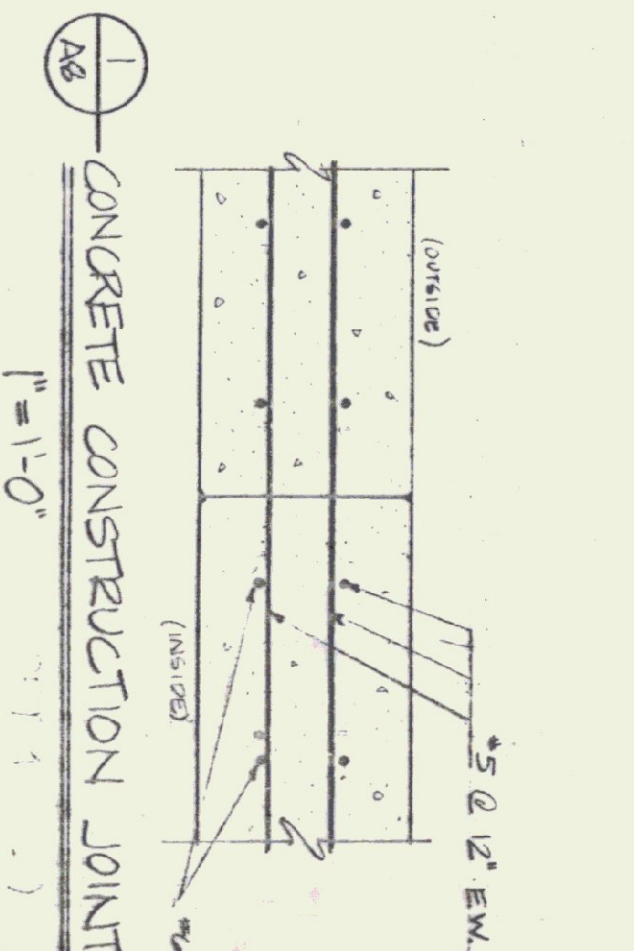
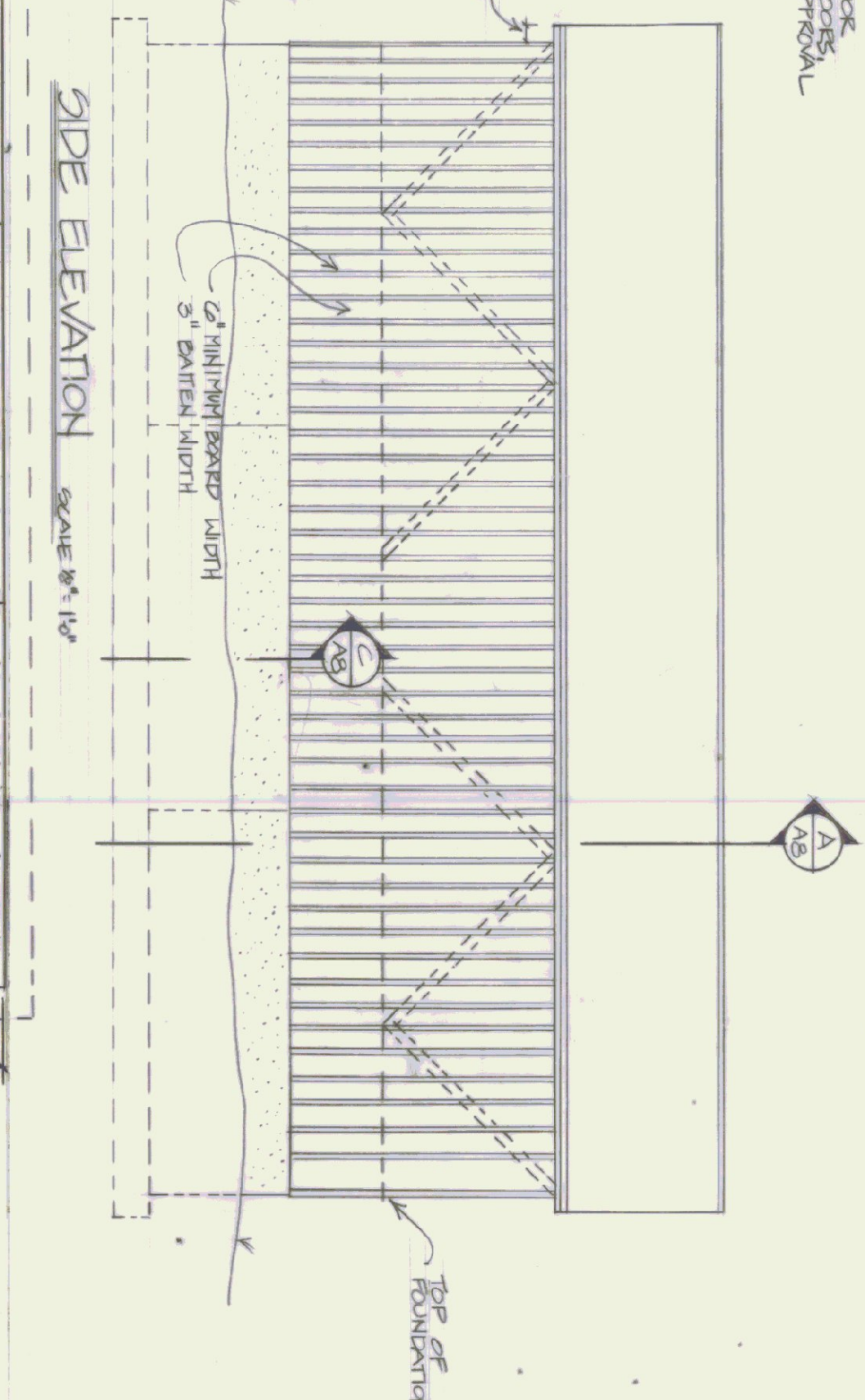
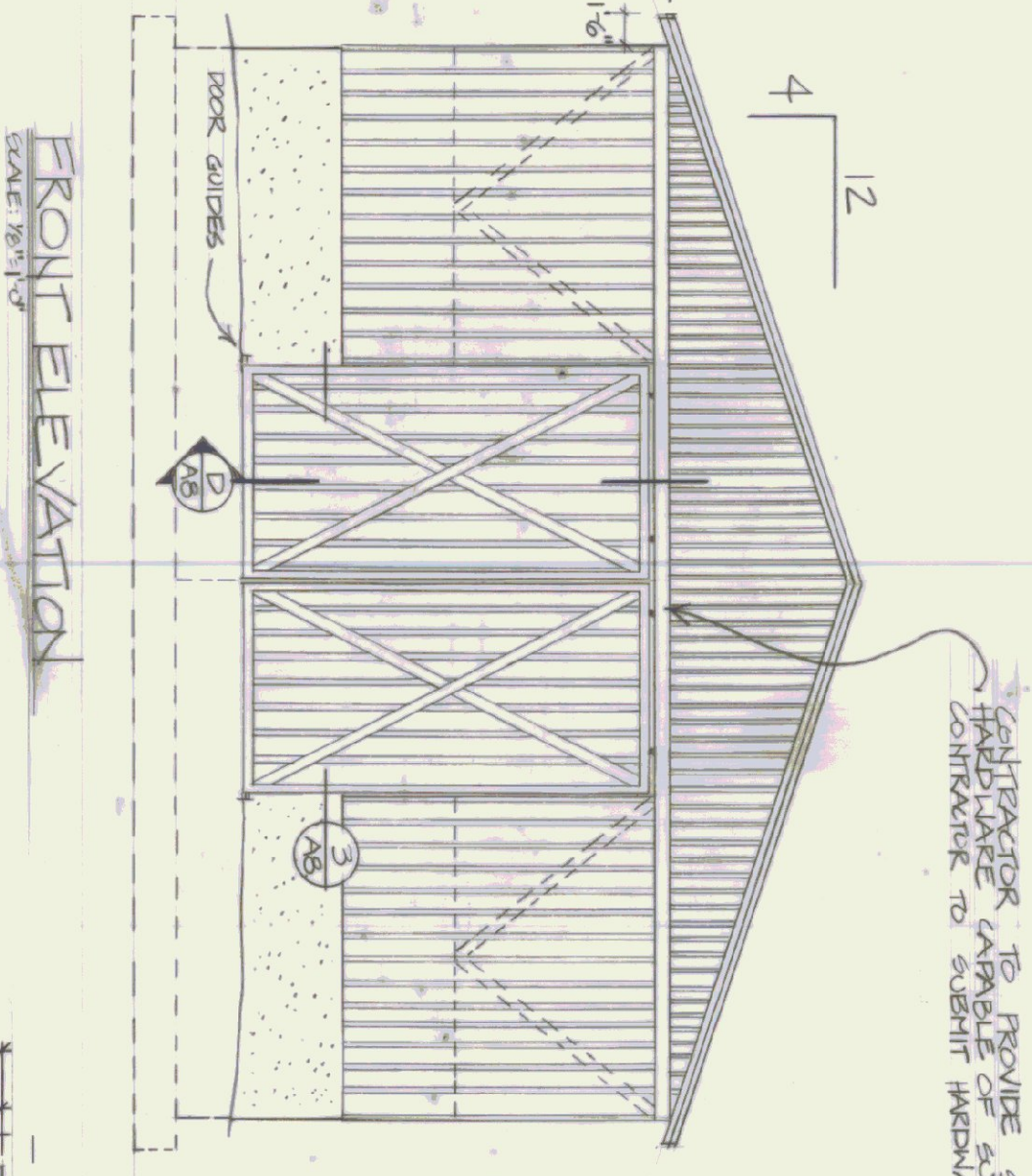
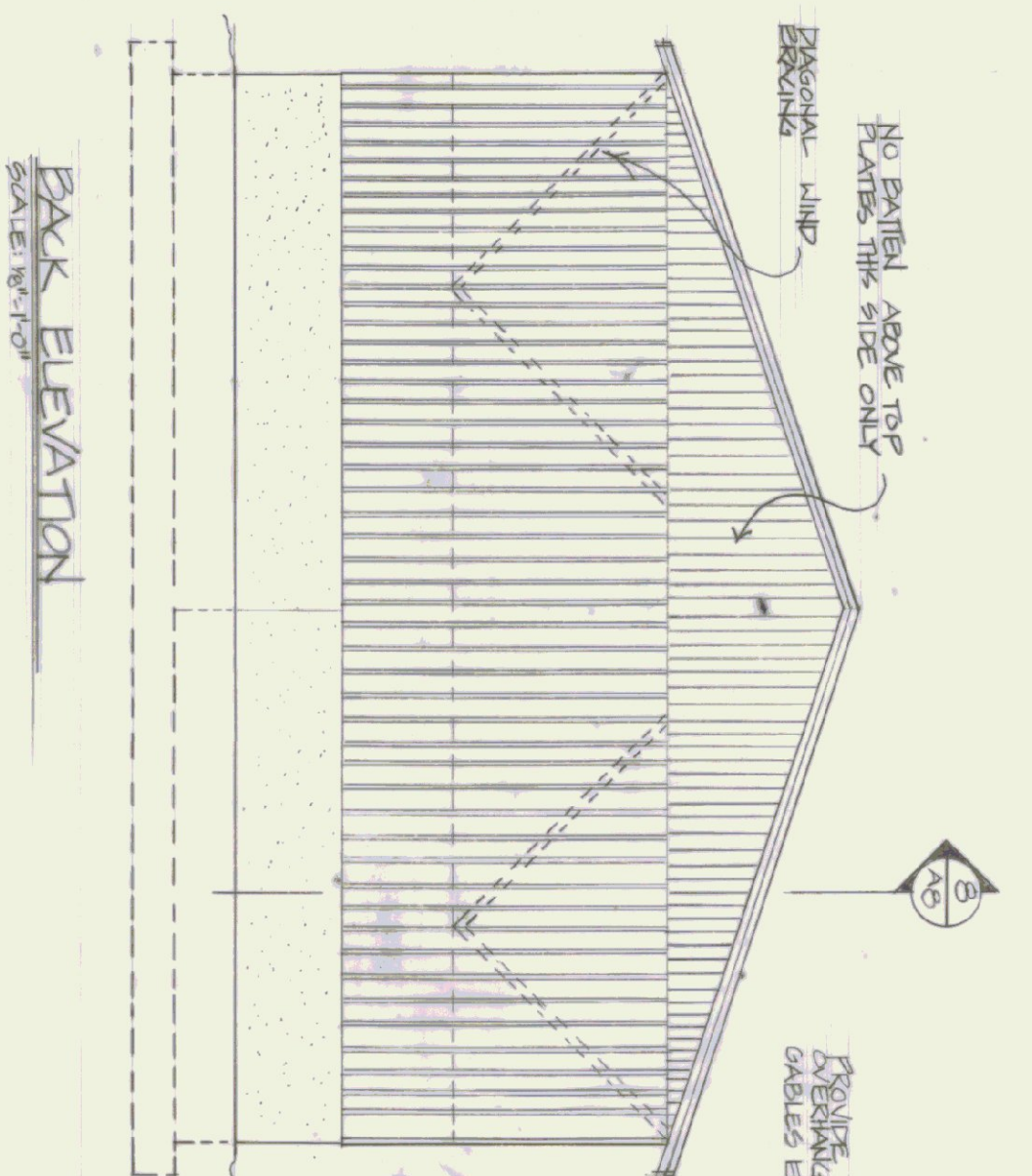
LUMBER NOTES

- FRAMING MEMBERS TO BE KILN DRIED
- CONSTRUCTION GRADE LUMBER
- BOARD & BATTEN SIDING TO BE NATIVE
- ROUGH SAWN WHITE PINE
- BATTEN WIDTH 3"
- ALL PLATES & NAILS IN CONTACT WITH CONCRETE TO BE CCA TREATED

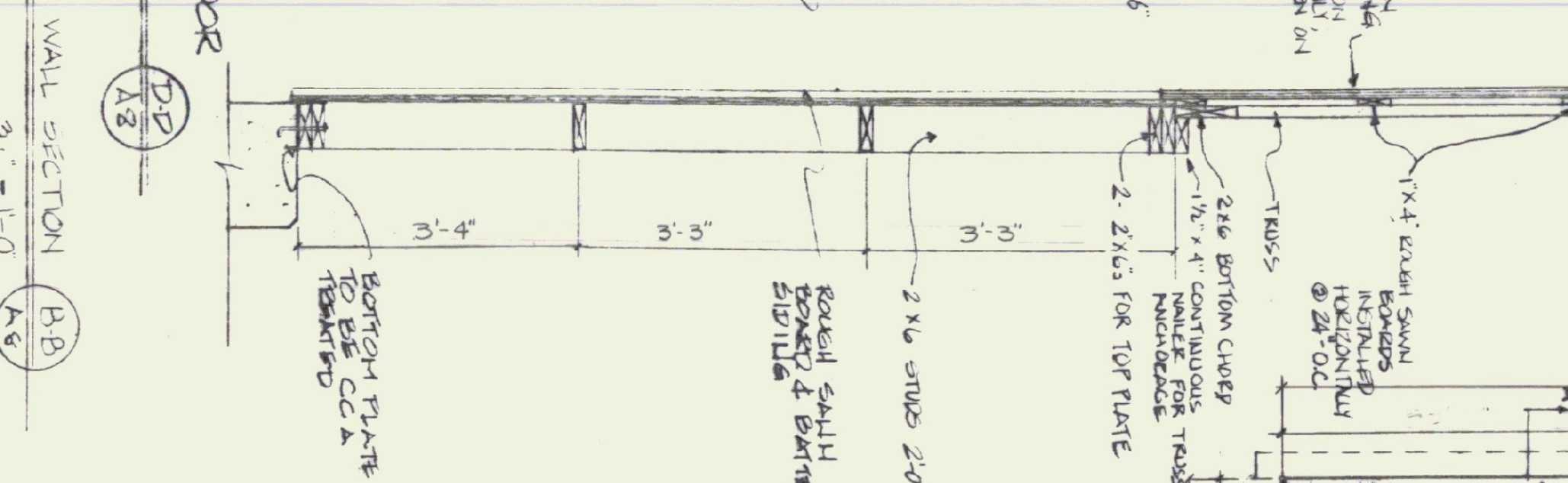
2x6 CCA TREATED GAY METAL FOOTING (CULU PANEL OR APPROVED EQUAL)



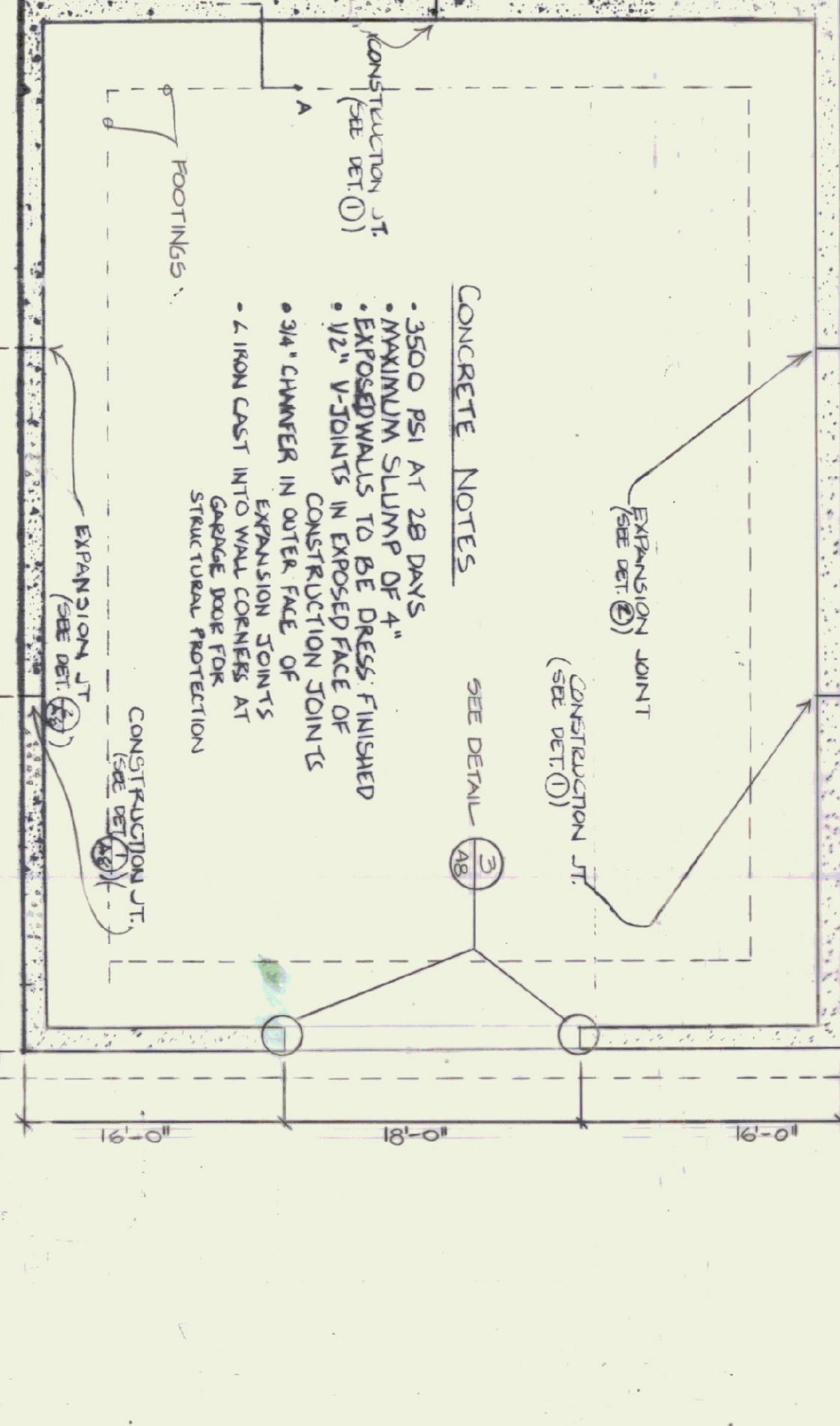
TYPICAL WALL SECTION A-A  
NTS



REINFORCEMENT PLACEMENT C-C  
NTS



WALL SECTION D-D  
NTS



TRUSS NOTES

- 1) TRUSS MANUFACTURER IS RESPONSIBLE FOR ENGINEERING TRUSSES.
- 2) TRUSS MANUFACTURER TO PROVIDE THE DIVISION OF STATE BUILDINGS A SET OF ENGINEERED & STAMPED TRUSS DRAWINGS FOR THE DIVISION'S APPROVAL BEFORE TRUSS MANUFACTURE.
- 3) TRUSS MANUFACTURER TO PROVIDE CONTRACTOR WITH ALL NECESSARY INSTRUCTIONS FOR PROPER TRUSS INSTALLATION, I.E. ANCHORAGE TO WALL PLATES & STUDS, LATERAL & STABILITY BRACING FOR WIND, ETC.
- 4) TRUSS DESIGN LOADS IN ACCORDANCE WITH THE 1989 D.O.C.A.

LIVE - 50 P.S.F. FOR SNOW  
DEAD - AS CALCULATED FROM ROOF MATERIALS, CEILING MATERIALS, & MECHANICAL EQUIP.  
WIND - 25 P.S.F.

STATE OF VERMONT  
DEPARTMENT OF STATE BUILDINGS  
AGENCY OF ADMINISTRATION  
MONTPELIER, VERMONT

AGENCY OF TRANSPORTATION  
WINTHROP GARAGE, DISTRICT NO. 1  
EAST DORSET, VERMONT  
SALT SHED

DATE	SCALE	REVISIONS	WC NO.
APRIL 1980	AS NOTED		A-8
DRAWN BY	APPROVED BY		
G. FENICK	F. RAY		13 OF 22

BUILD ONE

KEY  
DETAIL OR SECTION NO.  
SHEET NO. DEFAULT ON