

PLAN SYMBOL 

REF. No.	AREA SERVED	SUPPLY SIDE										EXHAUST SIDE															
		CFM	MAX. FACE VEL. FPM	RPM	STATIC PRESS. IN. WG.		MOTOR				AIR TEMP. °F (DB/WB) WINTER	AIR TEMP. °F (DB/WB) SUMMER	CFM	MAX. FACE VEL. FPM	RPM	STATIC PRESS. IN. WG.		MOTOR				AIR TEMP. °F (DB/WB) WINTER	AIR TEMP. °F (DB/WB) SUMMER				
					TOT.	EXT.	HP.	VOLTS	PHASE	HZ						TOT.	EXT.	HP.	VOLTS	PHASE	HZ						
HRU-1	REPAIR GARAGE	5200	-	906	1.60	0.40	3	240	1	60	-20	44	90	83	5200	-	906	1.60	0.40	3	240	1	60	60	-	80	-

NOTES:  
UNIT SHALL BE EQUAL TO HEATEX MODEL 5000-1C. PROVIDE OPTIONAL RECIRCULATION DAMPER, EXHAUST FAN BACKDRAFT DAMPER, FACE/BYPASS DAMPER, OUTSIDE AIR DAMPER, 15" F.G. FANS IN BOTH SUPPLY AND EXHAUST SECTIONS.

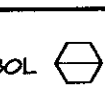
No.	MANUF.	MODEL	CFM	ROWS	FINS	FFP	SIZE		AIR SIDE			FACE VELOCITY FPM	MBH	GPM	WATER SIDE			REMARKS
							HEIGHT	WIDTH	E.A.T. (°F)	L.A.T. (°F)	A.P.D. (° WG.)				E.W.T. (°F)	L.W.T. (°F)	W.P.D. (FT HD)	
							HC-1	TRANE	K	5200	1				FF	113	24"	

PLAN SYMBOL 

TYPE	MANUFACTURER	MODEL	ENCLOSURE HEIGHT	MOUNTING HEIGHT	TIER	BTU/FT.	ELEMENT	A.M.T. (°F)	FINISH	REMARKS

NOTES:  
ARCHITECT TO SELECT COLOR OF ENCLOSURE.

No.	MANUFACTURER	MODEL	SIZE	BTUH	E.M.T. (°F)	GPM	CFM	MOTOR			REMARKS
								HP	VOLT	PH	
WH-1	BEACON-MORRIS	W42	-	4,278	200	1.0	50	50M	115	1	BASE BID
UH-1	VULCAN	VV-104	-	56,500	200	6.0	152B	1/8	115	1	ALTERNATE NO. 1
UH-2	VULCAN	HV-125A	-	21,230	200	2.5	460	16M	115	1	ALTERNATE NO. 1
CH-1	VULCAN	F-1000	02	15,100	200	1.0	230	1/10	115	1	BASE BID
CH-2	VULCAN	F-1000	03	33,100	200	2.0	330	1/10	115	1	BASE BID

GH = CABINET HEATER  
UH = UNIT HEATER  
WH = WALL HEATER  
E = EXHAUST  
PLAN SYMBOL 

No.	MANUFACTURER	SERIES	MODEL	SIZE	AIR PAT.	DAMPER	FINISH	REMARKS
E-2	METAL-AIRE	RH	RH	10"x10"	FIXED	-	W.E.	SQUARE TO ROUND TRANSITION
E-3	METAL-AIRE	RH	RH	8"x8"	FIXED	-	W.E.	SQUARE TO ROUND TRANSITION
E-4	FIELD BUILT	-	-	32"x32"	1/2"X1/2" GALV. WIRE MESH	-	-	ALTERNATE NO. 2
T-1	METAL-AIRE	RH	RH	18"x18"	FIXED	-	W.E.	NOTE 1
S-1	METAL-AIRE	RL	RL-DF	30"15"	ADJUSTABLE	-	ANODIZED	ALTERNATE NO. 2

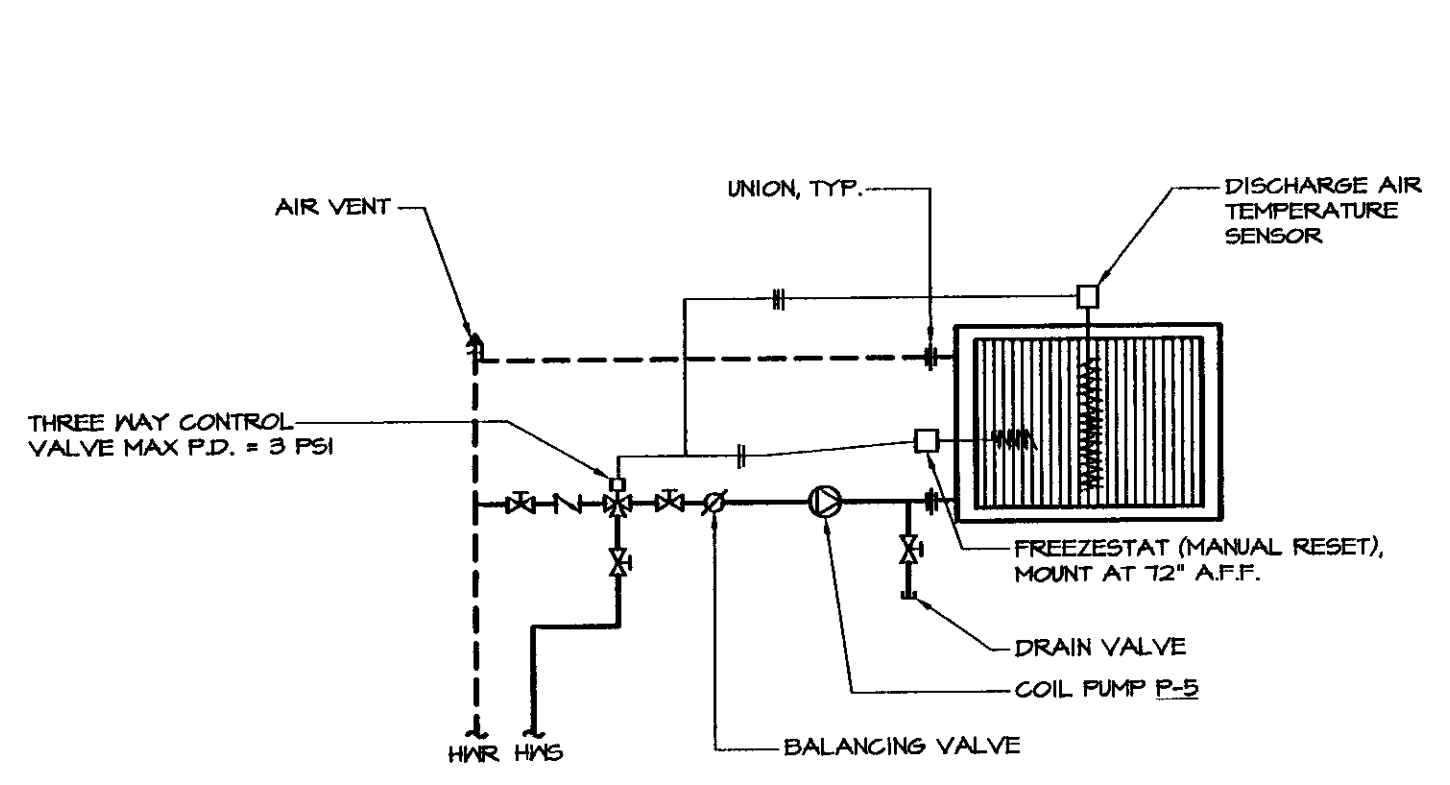
NOTES:  
1) PROVIDE 18 GAUGE GALVANIZED WALL SLEEVE WITH F.D. PROVIDE GRILLE ON BOTH SIDES OF WALL.

No.	MANUFACTURER	SERIES	MODEL	MIN. GPM	HEAD (FT. HD.)	MOTOR				REMARKS
						HP	VOLT	PH	RPM	
P-1	EXISTING BELL & GOSSETT	60	2X2X5 1/4	66	25	1	240	1	1750	REPAIR GARAGE
P-2	EXISTING BELL & GOSSETT	60	1X1X5 1/4	21	17	1/2	240	1	1750	EXISTING OFFICES
P-3	BELL & GOSSETT	60	2X2X7	75	35	1 1/2	240	1	1750	NEW STORAGE GARAGE ZONE
P-4	BELL & GOSSETT	60	2X2X7	75	35	1 1/2	240	1	1750	BACKUP HEATING PUMP
P-5	BELL & GOSSETT	FL	FL-36	12	30	1/6	115	1	1750	HC-1 PUMP

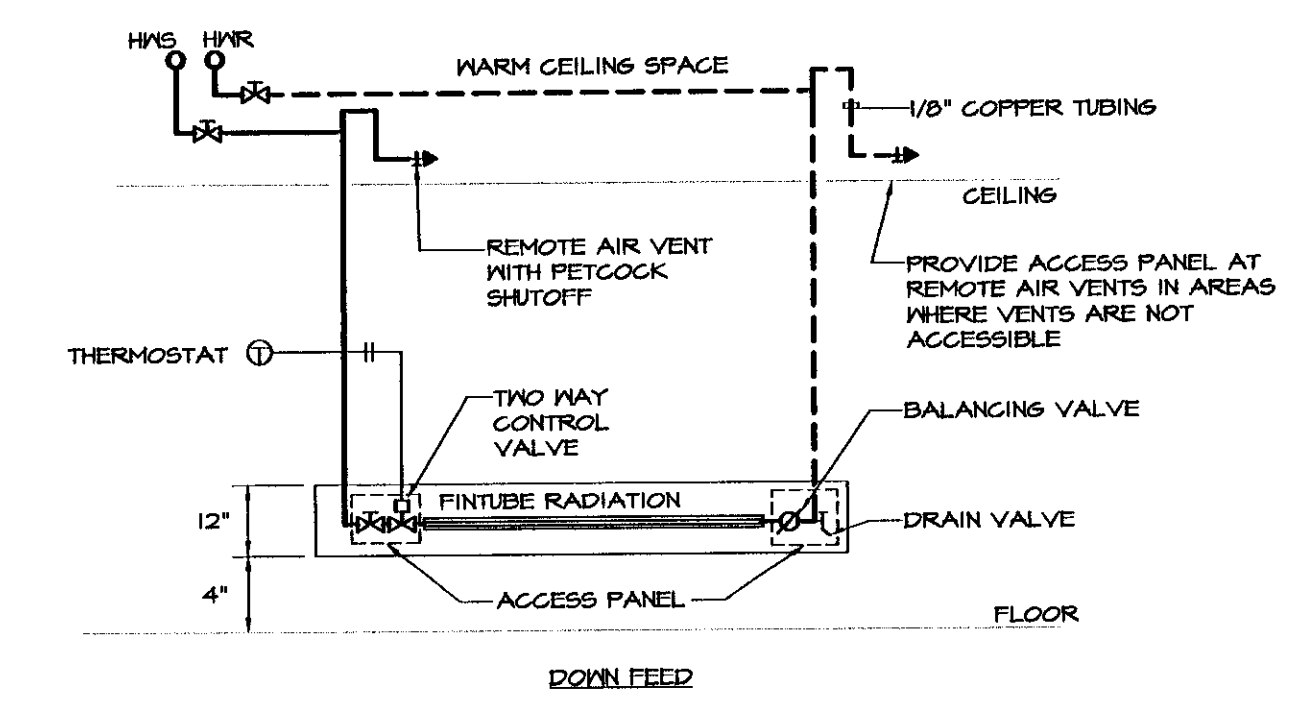
NOTES:  
UNDER BASE BID, EXISTING PUMPS SHALL REMAIN.

No.	MANUFACTURER	MODEL	CFM	E.S.P.	TYPE	RPM	MODEL			REMARKS
							H.P.	VOLT	PH	
EF-1	GREENECK	6B-100	650	0.50	ROOF	1200	1/4	115	1	BASE BID
EF-2	GREENECK	6B-420	8700	0.25	ROOF	275	3/4	240	1	ALTERNATE NO. 2
EF-3	GREENECK	6B-420	8700	0.25	ROOF	275	3/4	240	1	ALTERNATE NO. 2

PLAN SYMBOL 

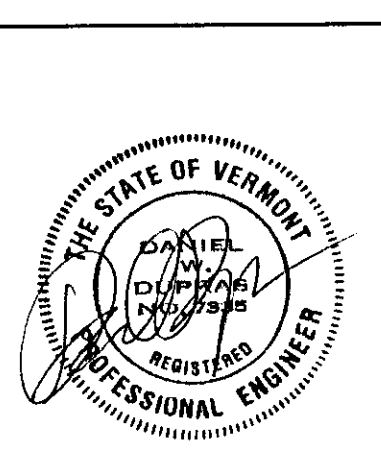


**HOT WATER COIL HC-1 PIPING DETAIL**  
NOT TO SCALE  
NOTE:  
PROVIDE DUCT ACCESS PANEL ON BOTH SIDES OF HEATING COIL TO ALLOW FOR CLEANING AND SERVICE.



**RADIATION PIPING DETAILS**  
NOT TO SCALE

X:\031207-bermDrawings\Mech\031207M10.dwg, M10, 01/19/2004 01:23:30 PM, © LANE ASSOCIATES CONSULTING ENGINEERS P.C. 2003



NO.	ISSUED FOR	DATE
1	BIDDING	1/19/2004



HEATING, VENTILATION, & AIR CONDITIONING,  
PLUMBING, FIRE PROTECTION, & ELECTRICAL  
  
CHARLES F. LANE, P.E.  
DANIEL W. DUPRAS, P.E.  
  
51 KILLINGTON AVENUE,  
RUTLAND, VERMONT 05701  
TELEPHONE: (802)747-3346  
FAX/MODEM: (802)747-3356

MECHANICAL SCHEDULES AND DETAILS			
BENNINGTON AOT GARAGE INTERIOR RENOVATIONS			
APPR:	DWD	DRAWN:	DWD/KPC
SCALE:	AS NOTED	PROJ. NO.	0312-07

M  
10