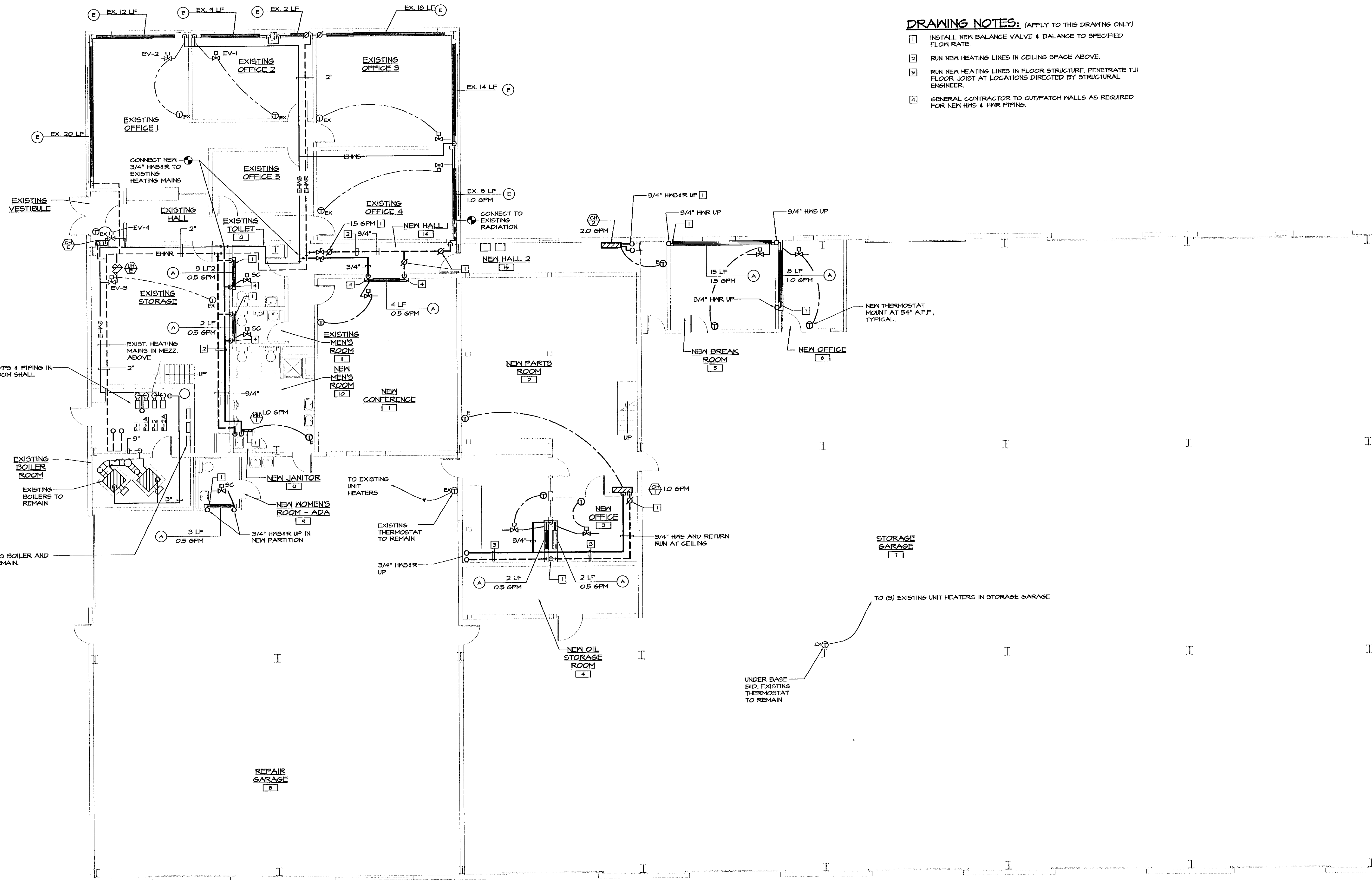


X:\031207-bennDrawings\Mech\031207M03.dwg, M3, 01/19/2004 01:31:04 PM, © LANE ASSOCIATES CONSULTING ENGINEERS P.C. 2003



- DRAWING NOTES:** (APPLY TO THIS DRAWING ONLY)
- 1 INSTALL NEW BALANCE VALVE & BALANCE TO SPECIFIED FLOW RATE.
  - 2 RUN NEW HEATING LINES IN CEILING SPACE ABOVE.
  - 3 RUN NEW HEATING LINES IN FLOOR STRUCTURE. PENETRATE TJI FLOOR JOIST AT LOCATIONS DIRECTED BY STRUCTURAL ENGINEER.
  - 4 GENERAL CONTRACTOR TO CUT/PATCH WALLS AS REQUIRED FOR NEW HWS & HWR PIPING.

**MAIN FLOOR PLAN - NEW HEATING BASE BID**  
SCALE: 1/8"=1'-0"

	1	BIDDING	1/19/2004
	NO.	ISSUED FOR	DATE

**LANE ASSOCIATES**  
CONSULTING ENGINEERS, P.C.

HEATING, VENTILATION, & AIR CONDITIONING, PLUMBING, FIRE PROTECTION, & ELECTRICAL

CHARLES F. LANE, P.E.  
DANIEL W. DUPRAS, P.E.

51 KILLINGTON AVENUE,  
RUTLAND, VERMONT 05701  
TELEPHONE: (802)747-3346  
FAX/MODEM: (802)747-3356

MAIN FLOOR PLAN NEW HEATING-BASE BID			
BENNINGTON AOT GARAGE INTERIOR RENOVATIONS			
APPR:	DWD	DRAWN:	DWD/KPC
SCALE:	AS NOTED	PROJ. NO.	0312-07

M  
3